

## Key statistics

Between 1 January and 30 June 2007 there have been 20 fatalities and 239 serious injuries on Northern Territory roads.

### Summary of the 12 months to date fatalities and serious injuries compared with the same period in the preceding 12 months period:

49 fatalities (2.1% increase)

545 serious injuries (14.7% increase)

2 overseas visitor fatalities (no change)

36 overseas visitor serious injuries (33.3% increase)

5 interstate visitor fatalities (16.7% decrease)

57 interstate visitor serious injuries (7.5% increase)

27 Indigenous fatalities (12.5% increase)

152 Indigenous serious injuries (60% increase)

14 pedestrian fatalities (16.7% increase)

39 pedestrian serious injuries (44.4% increase)

11 pedestrian fatalities were Indigenous (78.6% of total pedestrians)

4 motorcycle fatalities (33.3 % decrease)

5 motorcycle serious injuries (88.6% decrease)

Of the 49 fatalities year to date, 4% were overseas visitors and 10% were interstate visitors. 55% were Indigenous people. 29% were pedestrians and 8% were motorcyclists.

### Summary of 12 months to date causal and compounding factors compared with the same period in the preceding 12 months period:

26 alcohol related fatalities (3.7% decrease)

82 alcohol related serious injuries (12.8% decrease)

6 speed related fatalities (25% decrease)

66 speed related serious injuries (50% increase)

2 fatigue related fatalities (33.3% decrease)

14 fatigue related serious injuries (30% decrease)

16 seatbelt related fatalities (15.8% decrease)

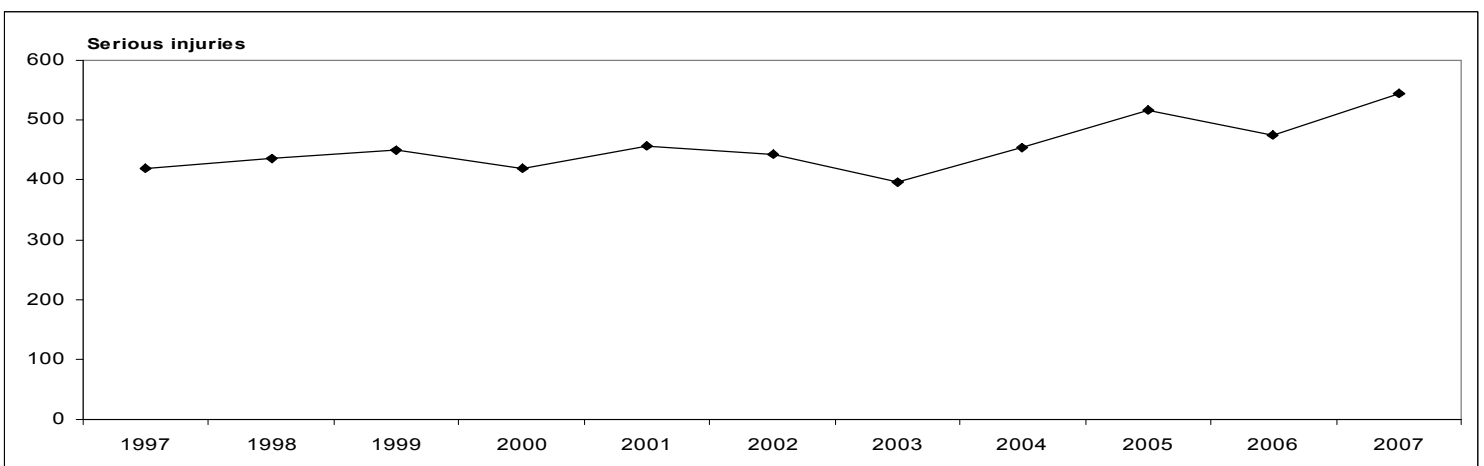
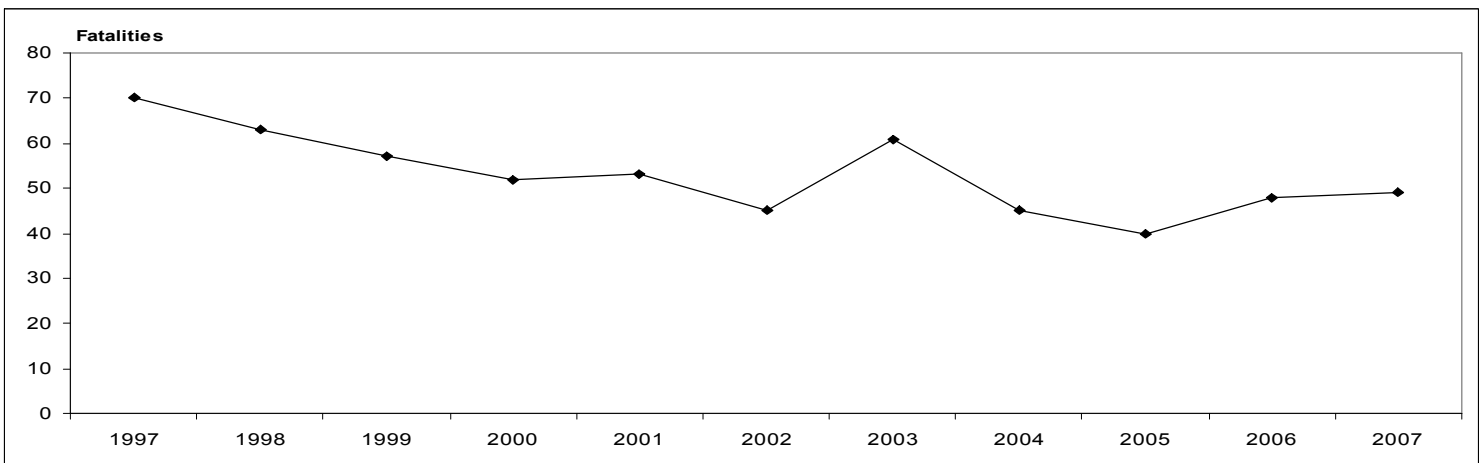
61 seatbelt related serious injuries (27.1% increase)

Of the 49 fatalities 12 months to date, alcohol related fatalities comprise 53%; speed related comprise 12%; fatigue related comprise 4% and seatbelt related comprise 33%.

Causal and compounding factors are not equal to the number of fatalities or serious injuries recorded. There may be more than one causal and/or compounding factor identified for each fatality or serious injury, or Police may not have identified a causal or compounding factor.

Speed related statistics more accurately refer to speeding rather than speed as a causal factor, where a driver was breaking the speed limit or travelling at a dangerous speed. Where there was no speed limit posted on Territory rural roads and highways, cause was likely to be attributed to a non-speed related cause such as 'driver inattention', notwithstanding that speed is a factor in any crash. Speed limits were introduced on rural roads and highways on 1 January 2007.

## Northern Territory fatalities and serious injuries 12 months to date: June 1997 - June 2007



## Summary of fatalities, serious injuries and crashes

Total	2nd quarter			Year to date			12-months to date		
	Apr-Jun 07	Apr-Jun 06	% change	Jan-Jun 07	Jan-Jun 06	% change	Jul 06-Jun 07	Jul 05-Jun 06	% change
Fatalities	10	10	0.0%	20	15	33.3%	49	48	2.1%
Serious injuries	133	122	9.0%	239	219	9.1%	545	475	14.7%

Total crashes	2nd quarter			Year to date			12-months to date		
	Apr-Jun 07	Apr-Jun 06	% change	Jan-Jun 07	Jan-Jun 06	% change	Jul 06-Jun 07	Jul 05-Jun 06	% change
Fatal	10	10	0.0%	19	15	26.7%	45	47	-4.3%
Serious injury	94	91	3.3%	164	168	-2.4%	367	352	4.3%

## Causal and compounding factors

Fatalities	2nd quarter			Year to date			12-months to date		
	Apr-Jun 07	Apr-Jun 06	% change	Jan-Jun 07	Jan-Jun 06	% change	Jul 06-Jun 07	Jul 05-Jun 06	% change
<b>Causal factors</b>									
Alcohol	3	4	-25.0%	9	7	28.6%	26	27	-3.7%
Speed	0	2	-100.0%	1	3	-66.7%	6	8	-25.0%
Fatigue	0	0	0.0%	1	1	0.0%	2	3	-33.3%
<b>Compounding factor</b>									
Seatbelt	3	2	50.0%	6	3	100.0%	16	19	-15.8%

Serious injuries	2nd quarter			Year to date			12-months to date		
	Apr-Jun 07	Apr-Jun 06	% change	Jan-Jun 07	Jan-Jun 06	% change	Jul 06-Jun 07	Jul 05-Jun 06	% change
<b>Causal factors</b>									
Alcohol	8	31	-74.2%	29	57	-49.1%	82	94	-12.8%
Speed	9	15	-40.0%	31	20	55.0%	66	44	50.0%
Fatigue	2	6	-66.7%	7	13	-46.2%	14	20	-30.0%
<b>Compounding factor</b>									
Seatbelt	9	11	-18.2%	22	22	0.0%	61	48	27.1%

## Residency status

Fatalities	2nd quarter			Year to date			12-months to date		
	Apr-Jun 07	Apr-Jun 06	% change	Jan-Jun 07	Jan-Jun 06	% change	Jul 06-Jun 07	Jul 05-Jun 06	% change
Northern Territory	9	9	0.0%	15	13	15.4%	41	40	2.5%
Overseas visitor	1	1	0.0%	2	1	100.0%	2	2	0.0%
Interstate visitor	0	0	0.0%	2	1	100.0%	5	6	-16.7%
Not stated	0	0	0.0%	1	0	0.0%	1	0	0.0%

Serious injuries	2nd quarter			Year to date			12-months to date		
	Apr-Jun 07	Apr-Jun 06	% change	Jan-Jun 07	Jan-Jun 06	% change	Jul 06-Jun 07	Jul 05-Jun 06	% change
Northern Territory	116	99	17.2%	199	186	7.0%	442	386	14.5%
Overseas visitor	8	9	-11.1%	15	9	66.7%	36	27	33.3%
Interstate visitor	8	11	-27.3%	19	21	-9.5%	57	53	7.5%
Not stated	1	3	-66.7%	6	3	100.0%	10	9	11.1%

# Territory Road Crash Overview

QUARTERLY STATISTICS APRIL - JUNE 2007

## Non-Indigenous and Indigenous

Fatalities	2nd quarter			Year to date			12-months to date		
	Apr-Jun 07	Apr-Jun 06	% change	Jan-Jun 07	Jan-Jun 06	% change	Jul 06-Jun 07	Jul 05-Jun 06	% change
Non-Indigenous	4	7	-42.9%	11	9	22.2%	22	24	-8.3%
Indigenous	6	3	100.0%	9	6	50.0%	27	24	12.5%

Serious injuries	2nd quarter			Year to date			12-months to date		
	Apr-Jun 07	Apr-Jun 06	% change	Jan-Jun 07	Jan-Jun 06	% change	Jul 06-Jun 07	Jul 05-Jun 06	% change
Non-Indigenous	100	103	-2.9%	179	178	0.6%	393	380	3.4%
Indigenous	33	19	73.7%	60	41	46.3%	152	95	60.0%

## Road users

Fatalities	2nd quarter			Year to date			12-months to date		
	Apr-Jun 07	Apr-Jun 06	% change	Jan-Jun 07	Jan-Jun 06	% change	Jul 06-Jun 07	Jul 05-Jun 06	% change
Driver	2	2	0.0%	8	3	166.7%	21	18	16.7%
Passenger	3	1	200.0%	4	3	33.3%	10	10	0.0%
Pedestrian	4	4	0.0%	6	5	20.0%	14	12	16.7%
Motorcyclist	1	3	-66.7%	2	4	-50.0%	4	6	-33.3%
Motorcycle pillion	0	0	0.0%	0	0	0.0%	0	0	0.0%
Bicyclist	0	0	0.0%	0	0	0.0%	0	2	-100.0%

Serious injuries	2nd quarter			Year to date			12-months to date		
	Apr-Jun 07	Apr-Jun 06	% change	Jan-Jun 07	Jan-Jun 06	% change	Jul 06-Jun 07	Jul 05-Jun 06	% change
Driver	57	65	-12.3%	94	122	-23.0%	228	256	-10.9%
Passenger	32	35	-8.6%	76	56	35.7%	183	129	41.9%
Pedestrian	12	10	20.0%	20	17	17.6%	39	27	44.4%
Motorcyclist	3	0	0.0%	4	18	-77.8%	5	44	-88.6%
Motorcycle pillion	20	8	150.0%	3	1	200.0%	3	3	0.0%
Bicyclist	9	4	125.0%	14	5	180.0%	27	15	80.0%
Bicycle pillion	0	0	0.0%	1	0	0.0%	1	0	0.0%
Not known	0	0	0.0%	0	0	0.0%	4	1	300.0%

## Pedestrians

Fatalities	2nd quarter			Year to date			12-months to date		
	Apr-Jun 07	Apr-Jun 06	% change	Jan-Jun 07	Jan-Jun 06	% change	Jul 06-Jun 07	Jul 05-Jun 06	% change
Non-Indigenous	0	1	-100.0%	1	1	0.0%	3	1	200.0%
Indigenous	4	3	33.3%	5	4	25.0%	11	11	0.0%

Serious injuries	2nd quarter			Year to date			12-months to date		
	Apr-Jun 07	Apr-Jun 06	% change	Jan-Jun 07	Jan-Jun 06	% change	Jul 06-Jun 07	Jul 05-Jun 06	% change
Non-Indigenous	4	4	0.0%	6	5	20.0%	11	10	10.0%
Indigenous	8	6	33.3%	14	12	16.7%	28	17	64.7%

# Territory Road Crash Overview

QUARTERLY STATISTICS APRIL - JUNE 2007

## Gender

Fatalities	2nd quarter			Year to date			12-months to date		
	Apr-Jun 07	Apr-Jun 06	% change	Jan-Jun 07	Jan-Jun 06	% change	Jul 06-Jun 07	Jul 05-Jun 06	% change
Male	8	9	-11.1%	16	12	33.3%	36	34	5.9%
Female	2	1	100.0%	4	3	33.3%	13	14	-7.1%

Serious injuries	2nd quarter			Year to date			12-months to date		
	Apr-Jun 07	Apr-Jun 06	% change	Jan-Jun 07	Jan-Jun 06	% change	Jul 06-Jun 07	Jul 05-Jun 06	% change
Male	91	79	15.2%	164	147	11.6%	347	292	18.8%
Female	42	43	-2.3%	75	72	4.2%	198	183	8.2%

## Age group by years

Fatalities	2nd quarter			Year to date			12-months to date		
	Apr-Jun 07	Apr-Jun 06	% change	Jan-Jun 07	Jan-Jun 06	% change	Jul 06-Jun 07	Jul 05-Jun 06	% change
0-4	1	0	0.0%	1	0	0.0%	2	1	100.0%
5-9	0	0	0.0%	0	0	0.0%	1	1	0.0%
10-14	1	0	0.0%	1	0	0.0%	1	0	0.0%
15-19	0	1	-100.0%	1	1	0.0%	5	3	66.7%
20-24	1	3	-66.7%	2	6	-66.7%	5	6	-16.7%
25-29	2	1	100.0%	3	2	50.0%	5	5	0.0%
30-34	1	0	0.0%	2	1	100.0%	7	6	16.7%
35-39	1	1	0.0%	2	1	100.0%	6	8	-25.0%
40-44	2	2	0.0%	2	2	0.0%	5	5	0.0%
45-49	0	1	-100.0%	2	1	100.0%	3	5	-40.0%
50+	1	1	0.0%	2	1	100.0%	7	8	-12.5%
Unknown	0	0	0.0%	2	0	0.0%	2	0	0.0%

Serious injuries	2nd quarter			Year to date			12-months to date		
	Apr-Jun 07	Apr-Jun 06	% change	Jan-Jun 07	Jan-Jun 06	% change	Jul 06-Jun 07	Jul 05-Jun 06	% change
0-4	3	1	200.0%	4	3	33.3%	14	5	180.0%
5-9	1	2	-50.0%	3	2	50.0%	12	6	100.0%
10-14	3	1	200.0%	5	2	150.0%	11	8	37.5%
15-19	19	17	11.8%	39	28	39.3%	67	61	9.8%
20-24	26	24	8.3%	38	43	-11.6%	68	83	-18.1%
25-29	11	13	-15.4%	27	26	3.8%	69	53	30.2%
30-34	12	15	-20.0%	19	23	-17.4%	55	50	10.0%
35-39	14	12	16.7%	27	22	22.7%	63	44	43.2%
40-44	12	18	-33.3%	22	25	-12.0%	53	42	26.2%
45-49	9	8	12.5%	16	19	-15.8%	31	42	-26.2%
50+	18	9	100.0%	29	22	31.8%	87	76	14.5%
Unknown	5	2	150.0%	10	4	150.0%	15	5	200.0%

# Territory Road Crash Overview

QUARTERLY STATISTICS APRIL - JUNE 2007

## Crash type

Fatal crashes	2nd quarter			Year to date			12-months to date		
	Apr-Jun 07	Apr-Jun 06	% change	Jan-Jun 07	Jan-Jun 06	% change	Jul 06-Jun 07	Jul 05-Jun 06	% change
Single vehicle	4	3	33.3%	9	5	80.0%	21	23	-8.7%
Multiple vehicle	5	7	-28.6%	9	10	-10.0%	23	23	0.0%
Other accident	1	0	0.0%	1	0	0.0%	1	1	0.0%
Hit animal	0	0	0.0%	0	0	0.0%	0	0	0.0%

Serious injury crashes	2nd quarter			Year to date			12-months to date		
	Apr-Jun 07	Apr-Jun 06	% change	Jan-Jun 07	Jan-Jun 06	% change	Jul 06-Jun 07	Jul 05-Jun 06	% change
Single vehicle	46	49	-6.1%	77	88	-12.5%	193	181	6.6%
Multiple vehicle	45	39	15.4%	82	75	9.3%	163	156	4.5%
Other accident	1	1	0.0%	2	2	0.0%	5	8	-37.5%
Hit animal	2	2	0.0%	3	3	0.0%	6	7	-14.3%

## Crashes by region

Fatal crashes	2nd quarter			Year to date			12-months to date		
	Apr-Jun 07	Apr-Jun 06	% change	Jan-Jun 07	Jan-Jun 06	% change	Jul 06-Jun 07	Jul 05-Jun 06	% change
Darwin	3	6	-50.0%	4	7	-42.9%	14	21	-33.3%
Central Australia	3	2	50.0%	9	4	125.0%	16	14	14.3%
Katherine	2	1	100.0%	4	3	33.3%	8	7	14.3%
Tennant Creek	2	0	0.0%	2	0	0.0%	4	1	300.0%
East Arnhem	0	1	-100.0%	0	1	-100.0%	3	4	-25.0%

Serious injury crashes	2nd quarter			Year to date			12-months to date		
	Apr-Jun 07	Apr-Jun 06	% change	Jan-Jun 07	Jan-Jun 06	% change	Jul 06-Jun 07	Jul 05-Jun 06	% change
Darwin	59	55	7.3%	107	104	2.9%	223	213	4.7%
Central Australia	18	20	-10.0%	24	31	-22.6%	58	62	-6.5%
Katherine	7	7	0.0%	13	14	-7.1%	45	32	40.6%
Tennant Creek	5	7	-28.6%	10	13	-23.1%	26	32	-18.8%
East Arnhem	5	2	150.0%	10	6	66.7%	15	13	15.4%

The statistics presented in this report reflect data recorded on the Northern Territory Vehicle Accident Database at the time of publication. All figures may be subject to revision as crash information or detail is updated.

For further information: visit [www.roadsafety.nt.gov.au](http://www.roadsafety.nt.gov.au) - email [roadsafety@nt.gov.au](mailto:roadsafety@nt.gov.au) - phone (08) 8924 7019