

# Territory road trauma overview



## Summary overview: Jan - Mar 2005

**Table 1.1 Break up of fatal crashes and fatalities**

	1 <sup>st</sup> Quarter	YTD		1 <sup>st</sup> Quarter	YTD
<b>Fatal crashes break up</b>	<b>8</b>	<b>8</b>	<b>Fatalities break up</b>	<b>10</b>	<b>10</b>
<b>By crash type</b>			<b>By gender</b>		
Hit pedestrian	0	0	Male	9	9
Ran off road	4	4	Female	1	1
Overtaken	2	2			
Angle collision	1	1	<b>By residency status</b>		
Rear end	1	1	NT residents	5	5
			<i>Indigenous</i>	1	1
<b>By road surface type</b>			<i>Non-Indigenous</i>	4	4
Sealed - Dry	4	4	Interstate	2	2
Sealed - Wet	1	1	Overseas	1	1
Unsealed - Dry	0	0	Not yet stated	2	2
Unsealed - Wet	0	0			
Not yet stated	3	3			
<b>By area</b>					
Rural	5	5			
Urban	3	3			

January - March 2005

For further information contact the  
 Road Safety Branch  
 Department of Planning and Infrastructure  
 GPO Box 2520  
 Darwin NT 0801  
 Phone: (08) 8924 7147  
 Fax: (08) 8924 7077  
 Email: [roadsafety@nt.gov.au](mailto:roadsafety@nt.gov.au)  
 Web: [www.roadsafety@nt.gov.au](http://www.roadsafety@nt.gov.au)

Vision:

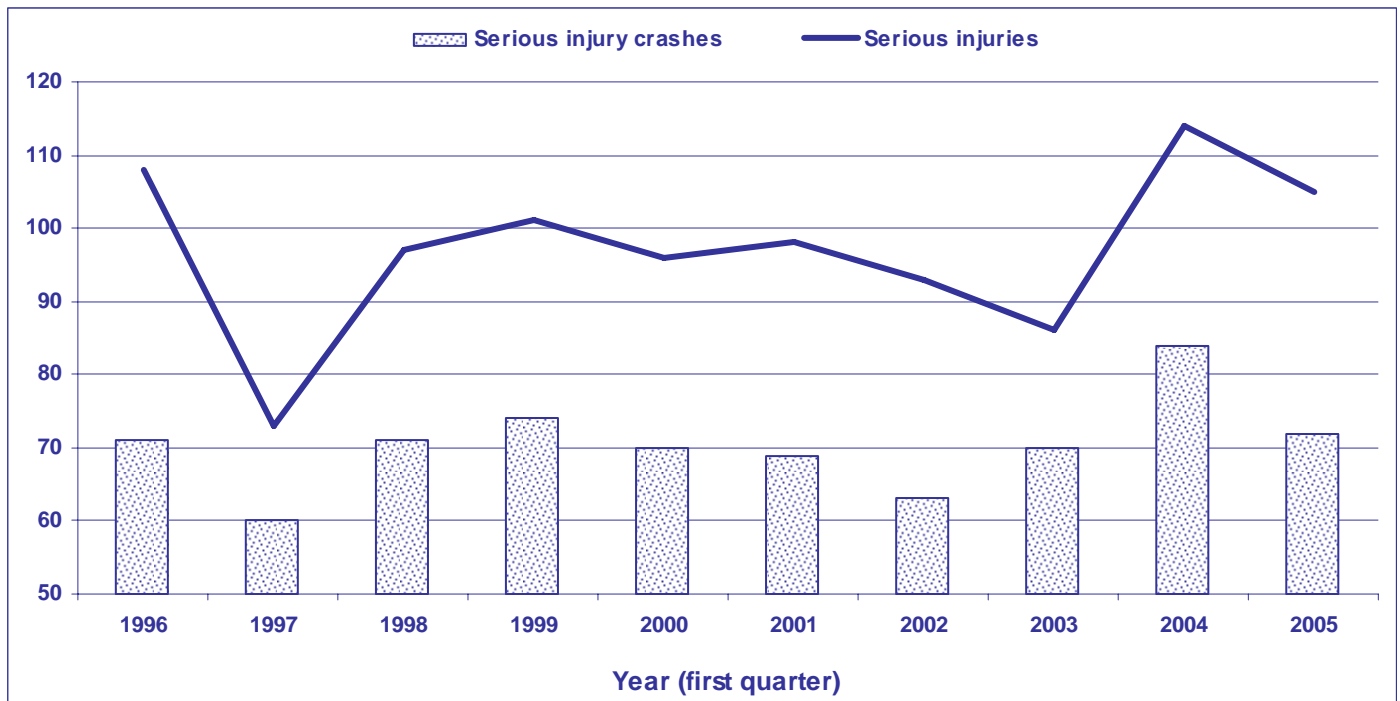
Reduced Road Trauma

## Summary overview: Jan - Mar 2005

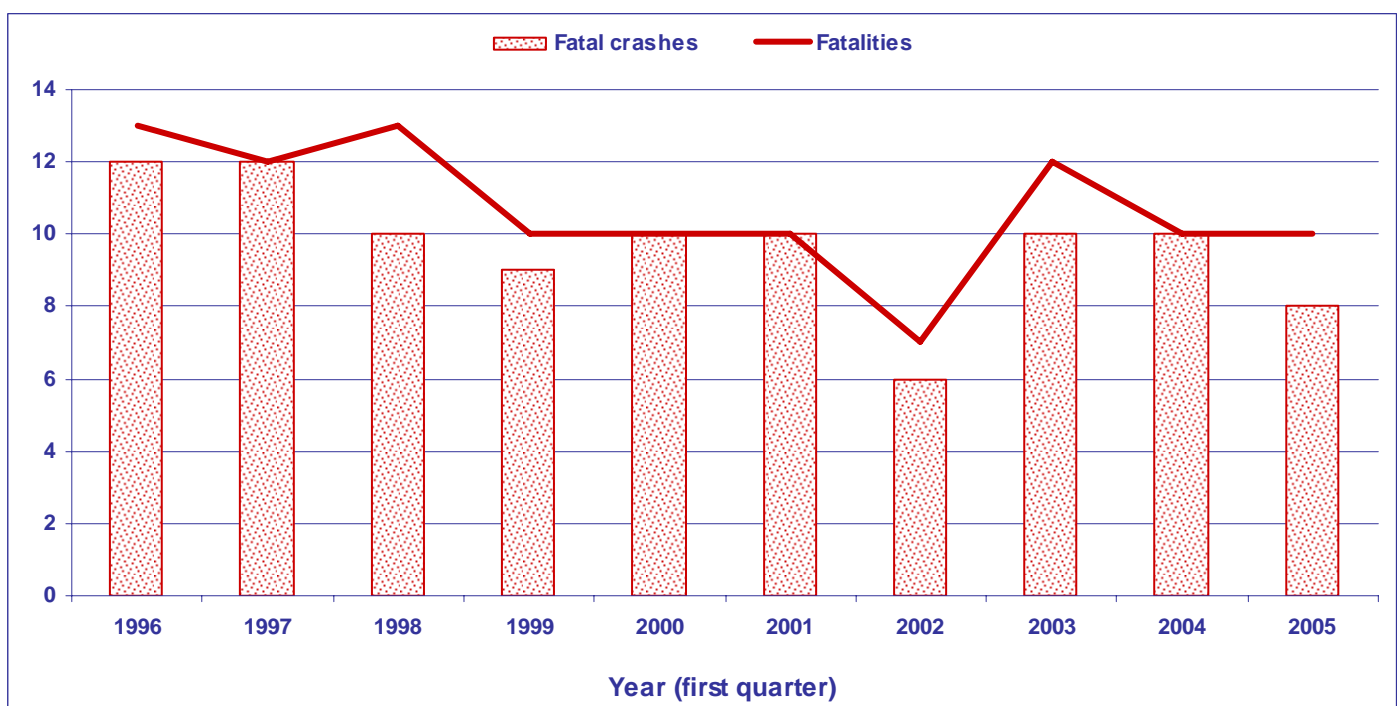
**Table 1-2: Summary of road crashes and fatalities**

	Jan to Mar 2004	Jan to Mar 2005	% Change	12 months to 31 Mar 2004	12 months to 31 Mar 2005	% Change
<b>Total fatalities</b>	10	10	0.0%	51	35	-31.4%
<b>Total male fatalities</b>	6	9	50.0%	35	25	-28.6%
<b>Total female fatalities</b>	4	1	-75.0%	16	10	-37.5%
<b>Total injuries</b>	239	201	-15.9%	1115	1011	-9.3%
<b>Total fatal crashes</b>	10	8	-20.0%	44	32	-27.3%
<b>Total injury crashes</b>	178	131	-26.4%	762	686	-10.0%
<b>Total non-injury crashes</b>	315	291	-7.6%	1555	1336	-14.1%
<b>Seatbelts not worn</b>						
Fatalities	2	7	250.0%	25	14	-44.0%
Injuries	16	16	0.0%	66	71	7.6%
<b>Speed related</b>						
Fatal crashes	3	3	0.0%	8	7	-12.5%
Injury crashes	22	8	-63.6%	77	80	3.9%
<b>Alcohol related</b>						
Fatal crashes	6	4	-33.3%	26	14	-46.2%
Injury crashes	14	14	0.0%	80	75	-6.3%
<b>Fatigue related</b>						
Fatal crashes	0	0	0.0%	4	2	-50.0%
Injury crashes	3	3	0.0%	16	15	-6.3%
<b>Pedestrian fatalities</b>						
Indigenous	4	0	-100.0%	9	4	-55.6%
Non-Indigenous	0	0	0.0%	2	1	-50.0%

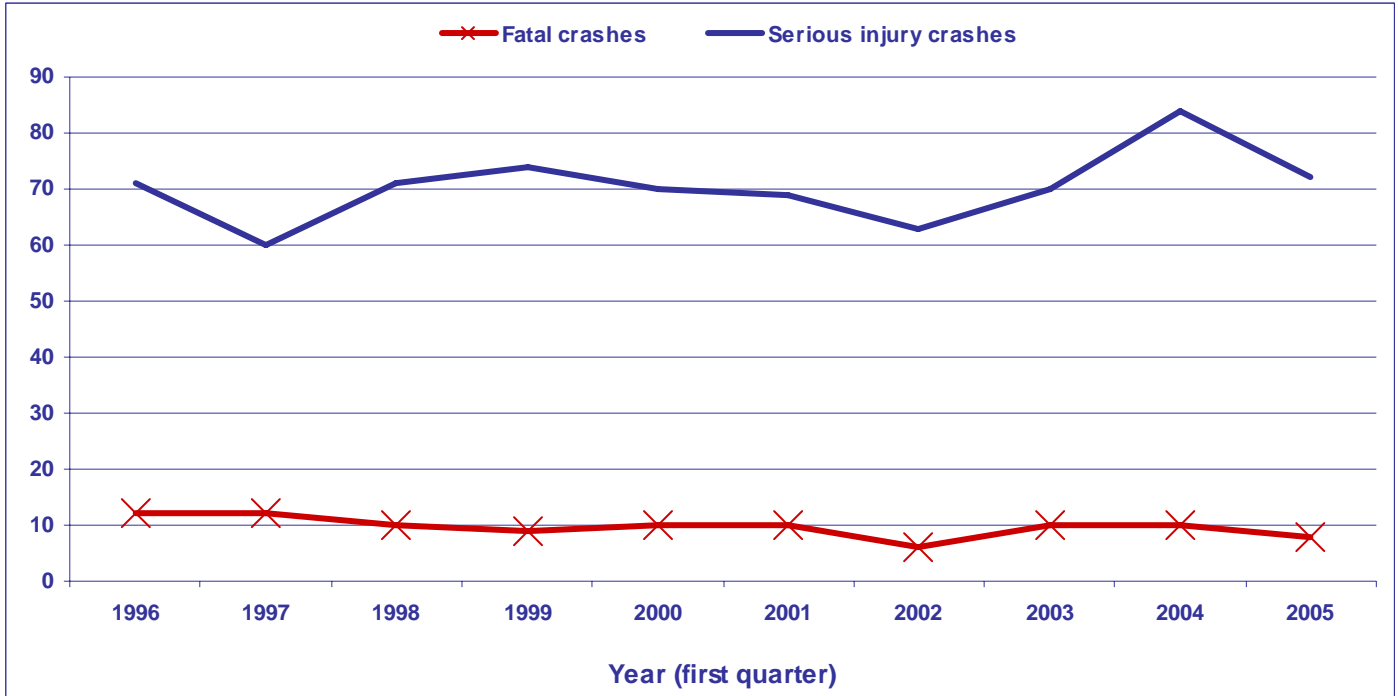
## Graph 1-1: Serious injury crashes and serious injuries



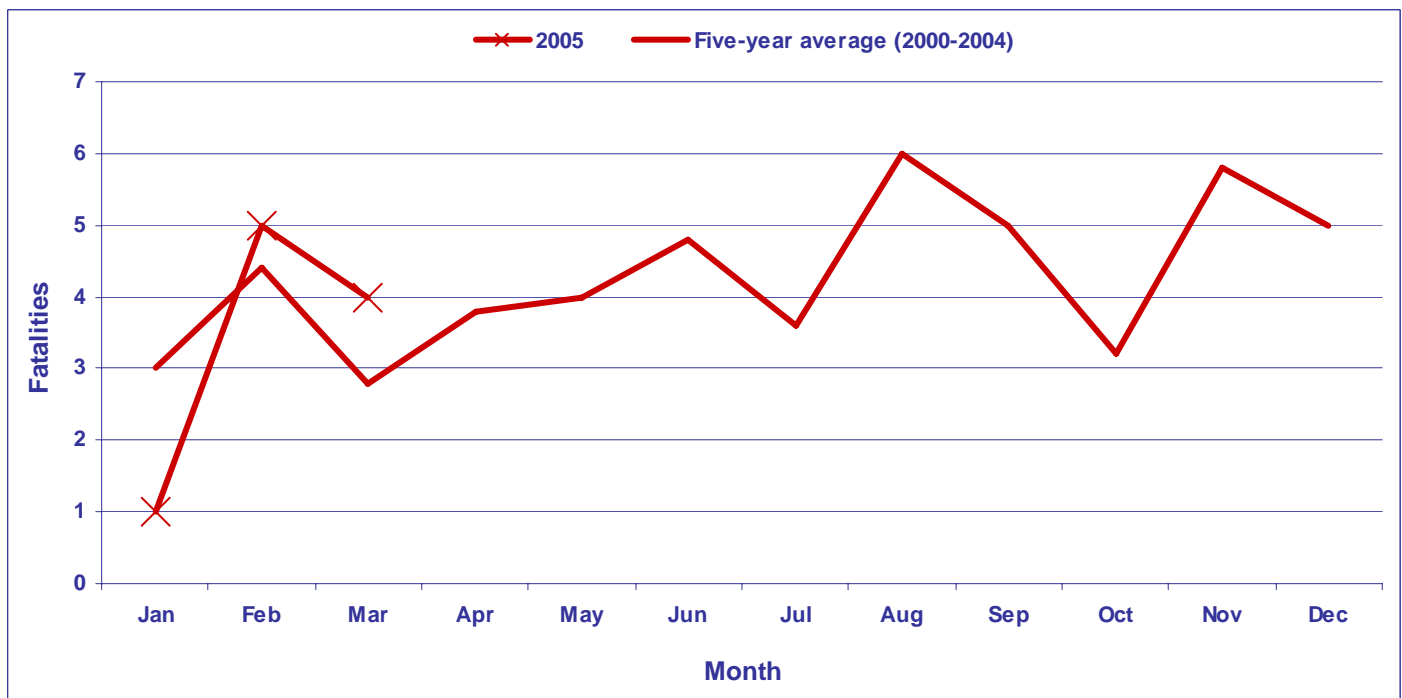
## Graph 1-2: Fatal crashes and fatalities



**Graph 1-3: Fatal crashes and serious injury crashes**



**Graph 1-4: Fatalities - Current year against five-year average**



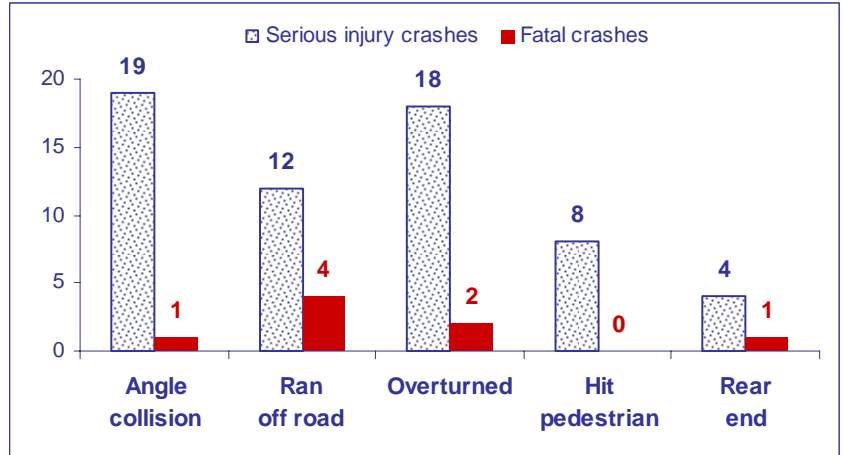
# NT serious injury/fatal crashes: Jan - Mar 2005

## 2-1: Serious injury/fatal crashes by crash type

### Serious injury crashes

Crash type	2005	Average 2000-2004	% Total
Angle collision	19	13.6	26.4%
Ran off road	12	12.6	16.7%
Overtuned	18	12.4	25.0%
Hit pedestrian	8	12.0	11.1%
Rear end	4	6.2	5.6%
Hit fixed object	1	3.2	1.4%
Fell off motorcycle	4	2.8	5.6%
Side swipe	3	2.4	4.2%
Head on	1	2.0	1.4%
Hit parked vehicle	0	1.2	0.0%
Hit cattle/buffalo	0	1.0	0.0%
Other accident	1	1.0	1.4%
Hit horse/camel	0	0.4	0.0%
Hit other animal	0	0.2	0.0%
Hit other object	1	0.2	1.4%
<b>Total</b>	<b>72</b>	<b>71.2</b>	<b>100.0%</b>

### Top five crash type

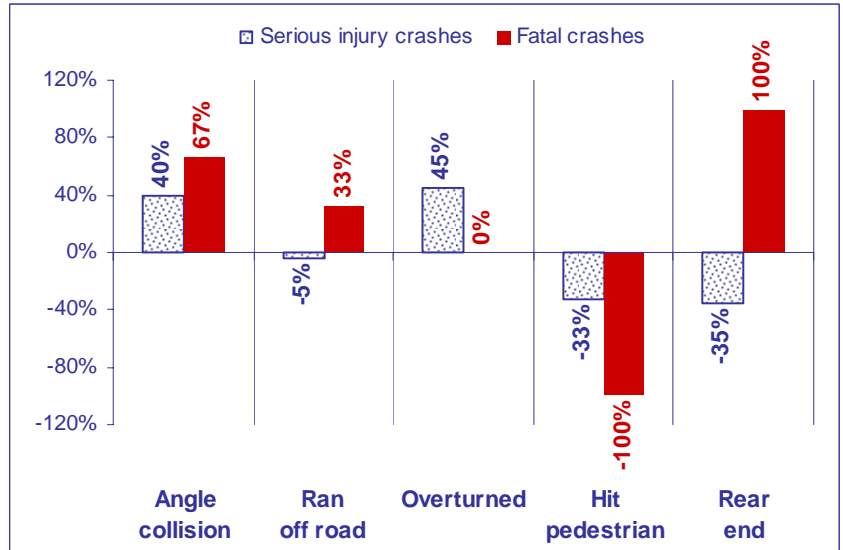


Top five crash data for first quarter 2005

### Fatal crashes

Crash type	2005	Average 2000-2004	% Total
Ran off road	4	3.0	50.0%
Overtuned	2	2.0	25.0%
Hit pedestrian	0	1.8	0.0%
Angle collision	1	0.6	12.5%
Other accident	0	0.6	0.0%
Side swipe	0	0.6	0.0%
Fell off motorcycle	0	0.4	0.0%
Hit cattle/buffalo	0	0.2	0.0%
Rear end	1	0.0	12.5%
<b>Total</b>	<b>8</b>	<b>9.2</b>	<b>100.0%</b>

### Top five crash type - trend 2005



Percentage change between 2005 and corresponding five-year average

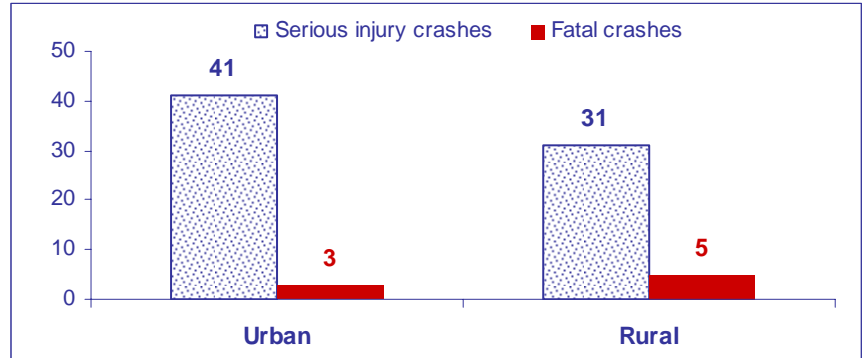
# NT serious injury/fatal crashes: Jan - Mar 2005

## 2-2: Serious injury/fatal crashes by area (rural/urban)

### Serious injury crashes

Area	2005	Average 2000-2004	% Total
Urban	41	45.2	56.9%
Rural	31	26.0	43.1%
<b>Total</b>	<b>72</b>	<b>71.2</b>	<b>100.0%</b>

### Crashes by area

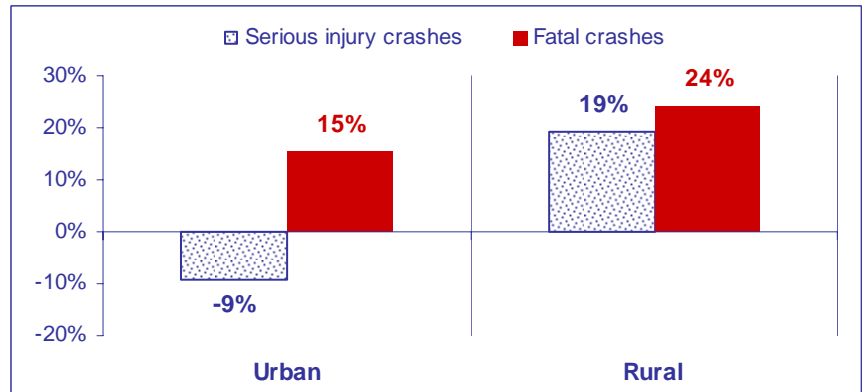


Crash data for first quarter 2005

### Fatal crashes

Area	2005	Average 2000-2004	% Total
Urban	3	2.6	37.5%
Rural	5	6.6	62.5%
<b>Total</b>	<b>8</b>	<b>9.2</b>	<b>100.0%</b>

### Crashes by area - trend 2005



Percentage change between 2005 and corresponding five-year average

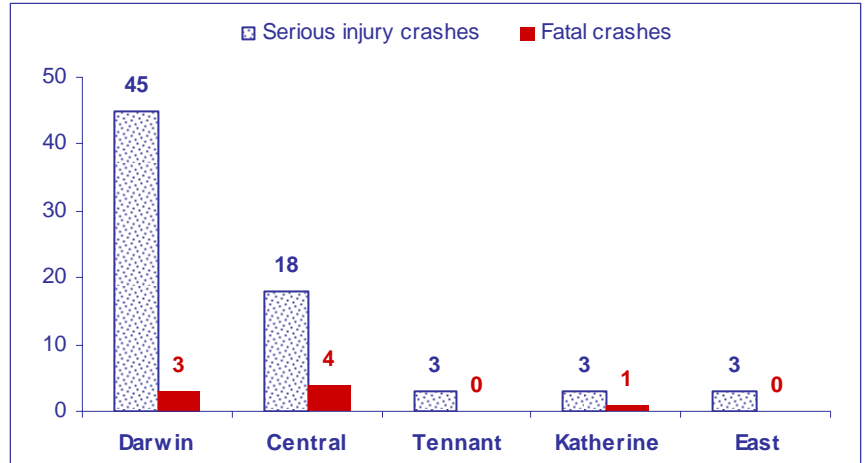
# NT serious injury/fatal crashes: Jan - Mar 2005

## 2-3: Serious injury/fatal crashes by region

### Serious injury crashes

Region	2005	Average 2000-2004	% Total
Darwin	45	48.2	62.5%
Central	18	9.6	25.0%
Tennant	3	5.4	4.2%
Katherine	3	5.2	4.2%
East	3	2.8	4.2%
<b>Total</b>	<b>72</b>	<b>71.2</b>	<b>100.0%</b>

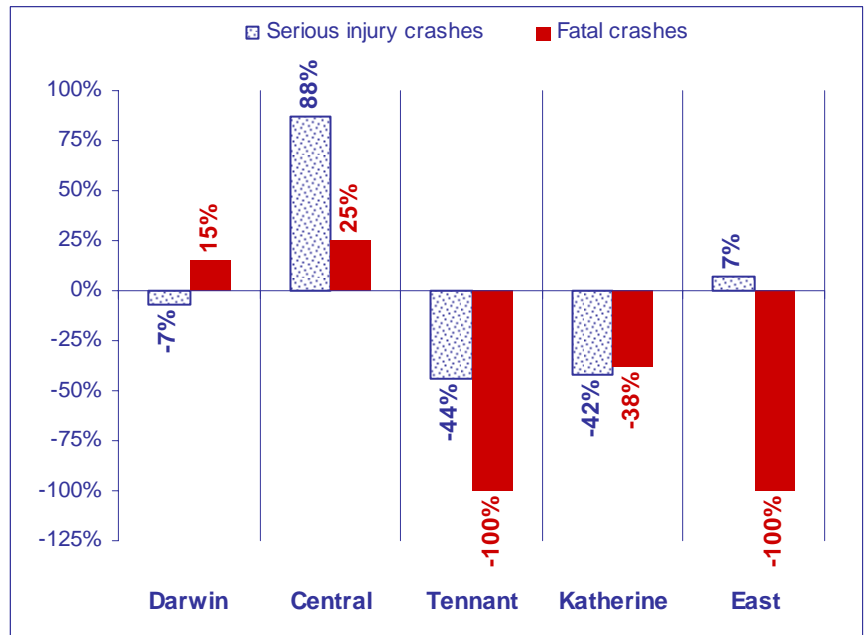
### Crashes by region



### Fatal crashes

Region	2005	Average 2000-2004	% Total
Central	4	3.2	50.0%
Darwin	3	2.6	37.5%
Katherine	1	1.6	12.5%
Tennant	0	1.6	0.0%
East	0	0.2	0.0%
<b>Total</b>	<b>8</b>	<b>9.2</b>	<b>100.0%</b>

### Crashes by region - trend 2005



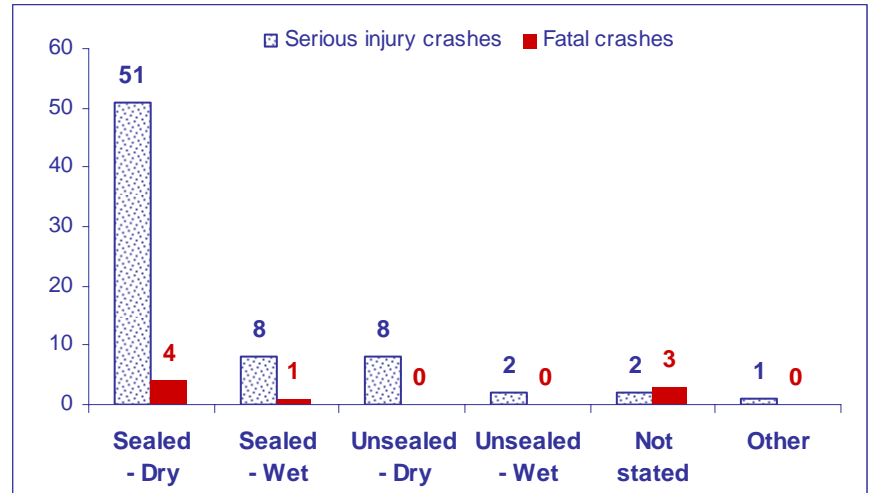
# NT serious injury/fatal crashes: Jan - Mar 2005

## 2-4: Serious injury/fatal crashes by road condition

### Serious injury crashes

Road Condition	2005	Average 2000-2004	% Total
Sealed - Dry	51	47.0	70.8%
Sealed - Wet	8	15.6	11.1%
Unsealed - Dry	8	4.8	11.1%
Unsealed - Wet	2	2.2	2.8%
Not stated	2	1.6	2.8%
Other	1	0.0	1.4%
<b>Total</b>	<b>72</b>	<b>71.2</b>	<b>100.0%</b>

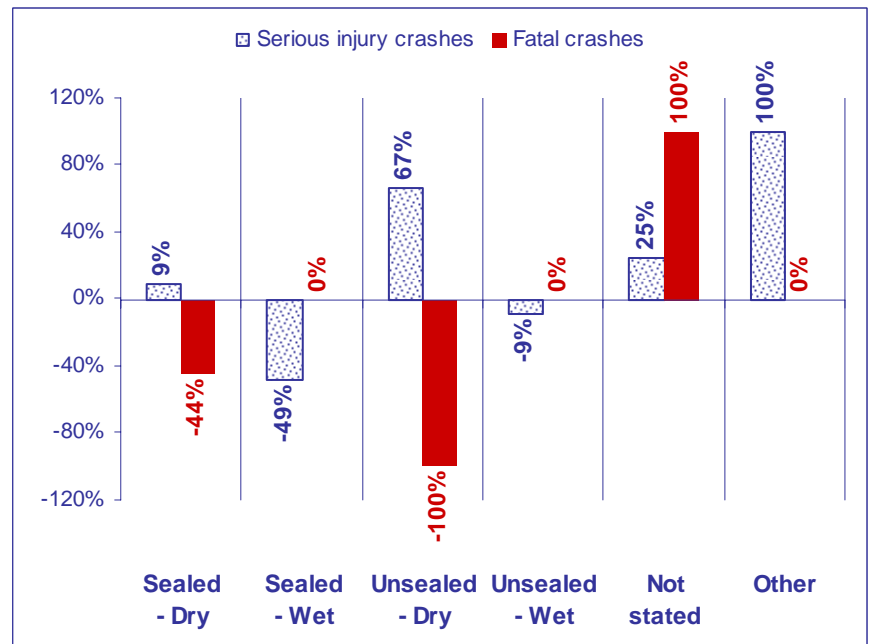
### Crashes by road condition



### Fatal crashes

Road Condition	2005	Average 2000-2004	% Total
Sealed - Dry	4	7.2	50.0%
Sealed - Wet	1	1.0	12.5%
Unsealed - Dry	0	1.0	0.0%
Not stated	3	0.0	37.5%
<b>Total</b>	<b>8</b>	<b>9.2</b>	<b>100.0%</b>

### Crashes by road condition - trend 2005



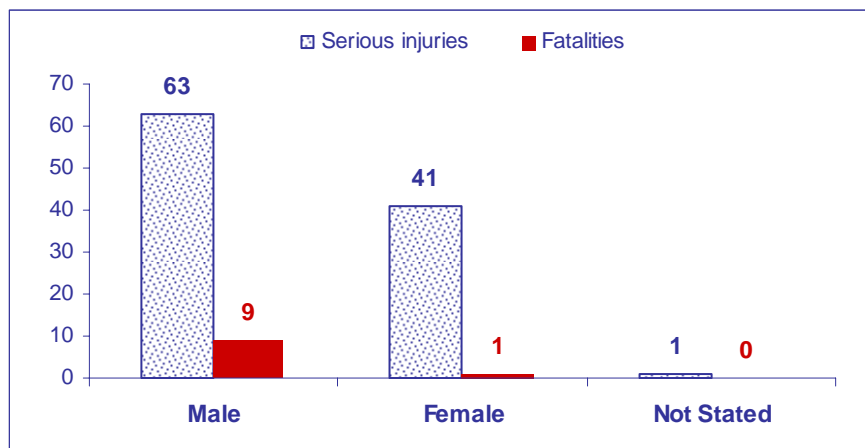
# NT serious injuries/fatalities: Jan - Mar 2005

## 3-1: Serious injuries/fatalities by gender

### Serious injuries

Gender	2005	Average 2000-2004	% Total
Male	63	59.4	60.0%
Female	41	38.0	39.0%
Not stated	1	0.0	1.0%
<b>Total</b>	<b>105</b>	<b>97.4</b>	<b>100.0%</b>

### Serious injuries/fatalities by gender

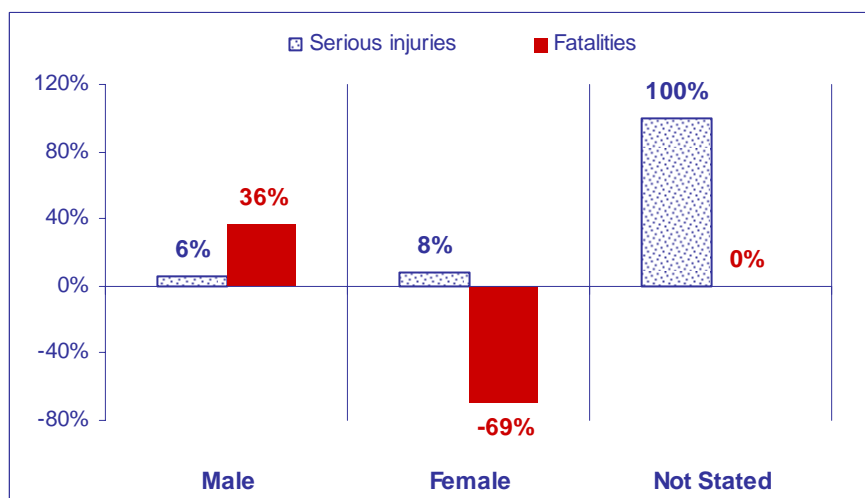


Road trauma data for first quarter 2005

### Fatalities

Gender	2005	Average 2000-2004	% Total
Male	9	6.6	90.0%
Female	1	3.2	10.0%
<b>Total</b>	<b>10</b>	<b>9.8</b>	<b>100.0%</b>

### Serious injuries/fatalities by gender - trend 2005



Percentage change between 2005 and corresponding five-year average

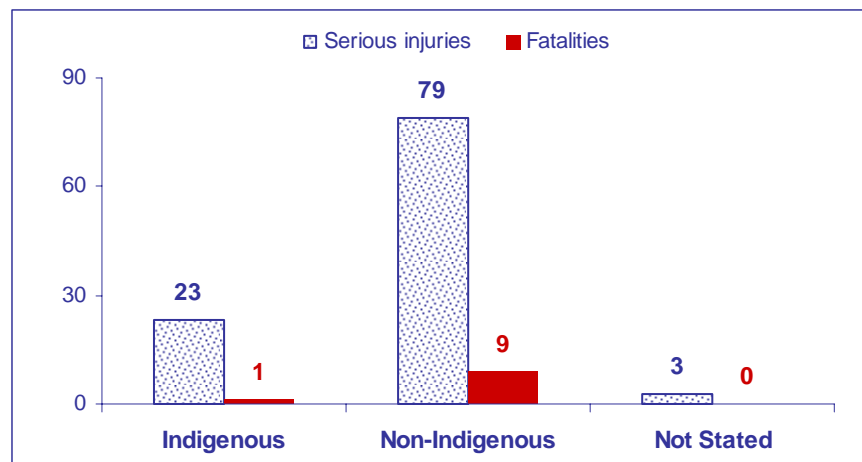
# NT serious injuries/fatalities: Jan - Mar 2005

## 3-2: Serious injuries/fatalities - Indigenous and Non-Indigenous

### Serious injuries

Indigenous and Non-Indigenous	2005	Average 2000-2004	% Total
Non-Indigenous	79	75.2	75.2%
Indigenous	23	22.2	21.9%
Not stated	3	0.0	2.9%
<b>Total</b>	<b>105</b>	<b>97.4</b>	<b>100.0%</b>

### Indigenous and Non-Indigenous

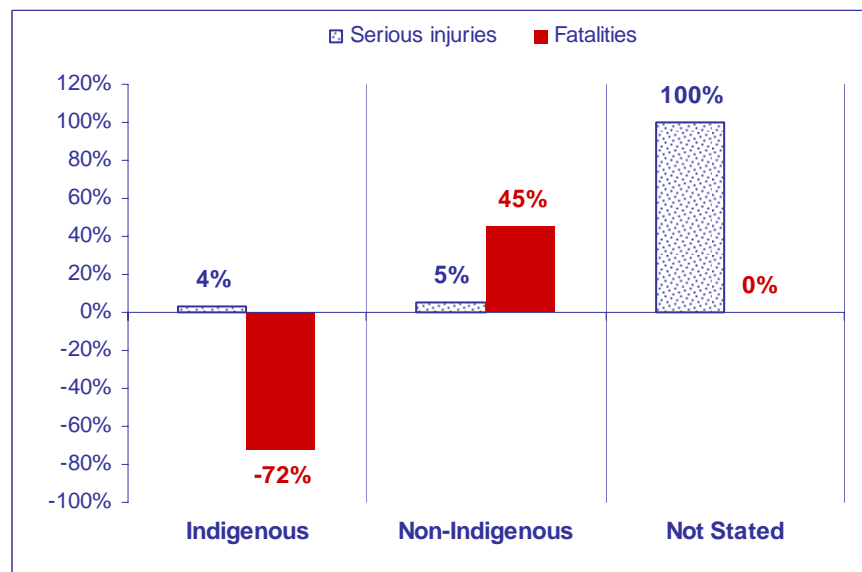


Road trauma data for first quarter 2005

### Fatalities

Indigenous and Non-Indigenous	2005	Average 2000-2004	% Total
Indigenous	1	3.6	10.0%
Non-Indigenous	9	6.2	90.0%
Not stated	0	0.0	0.0%
<b>Total</b>	<b>10</b>	<b>9.8</b>	<b>100.0%</b>

### Indigenous and Non-Indigenous



Percentage change between 2005 and corresponding five-year average

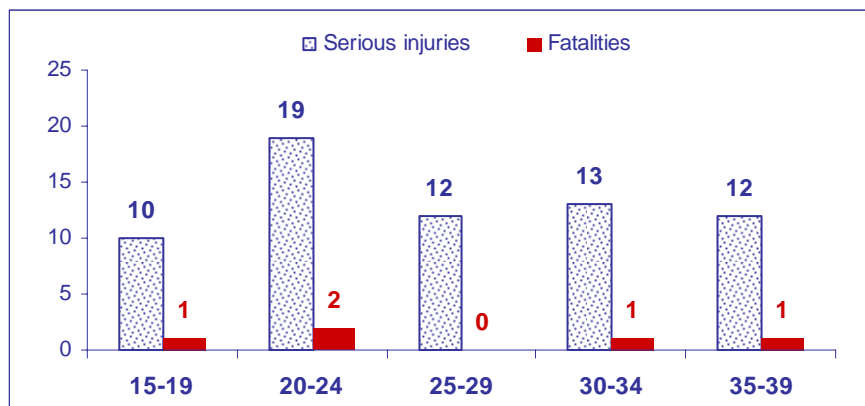
# NT serious injuries/fatalities: Jan - Mar 2005

## 3-3: Serious injuries/fatalities by age group

### Serious injuries

Age group	2005	Average 2000-2004	% Total
0-4	0	1.0	0.0%
5-9	3	3.0	2.9%
10-14	3	2.4	2.9%
15-19	10	14.2	9.5%
20-24	19	14.4	18.1%
25-29	12	14.0	11.4%
30-34	13	13.0	12.4%
35-39	12	12.6	11.4%
40-44	9	6.4	8.6%
45-49	8	4.2	7.6%
50+	13	11.0	12.4%
unknown	3	1.2	2.9%
<b>Total</b>	<b>105</b>	<b>97.4</b>	<b>100.0%</b>

### Top five serious injuries/fatalities by age group

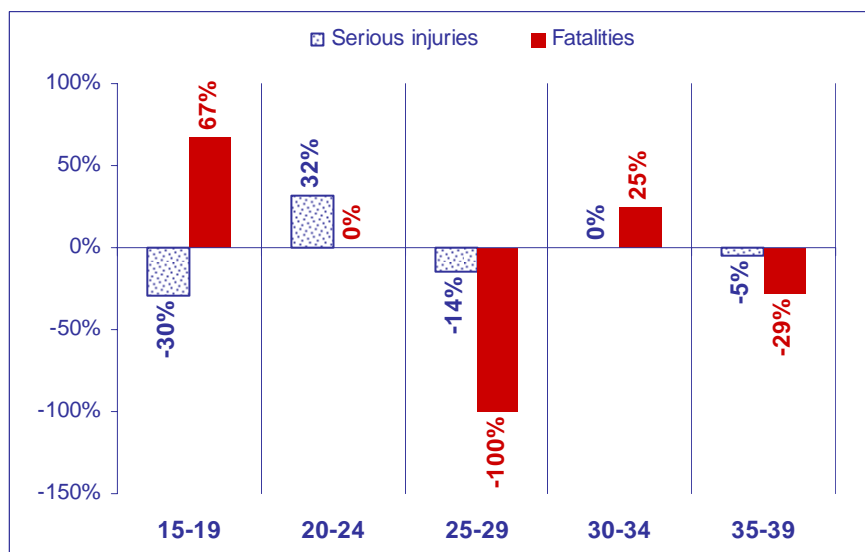


Top five road trauma data for first quarter 2005

### Fatalities

Age group	2005	Average 2000-2004	% Total
0-4	1	0.2	10.0%
5-9	0	0.4	0.0%
10-14	0	0.2	0.0%
15-19	1	0.6	10.0%
20-24	2	2.0	20.0%
25-29	0	1.6	0.0%
30-34	1	0.8	10.0%
35-39	1	1.4	10.0%
40-44	0	0.6	0.0%
45-49	2	0.8	20.0%
50+	2	1.2	20.0%
<b>Total</b>	<b>10</b>	<b>9.8</b>	<b>100.0%</b>

### Top five serious injuries/fatalities by age group - trend 2005



Percentage change between 2005 and corresponding five-year average

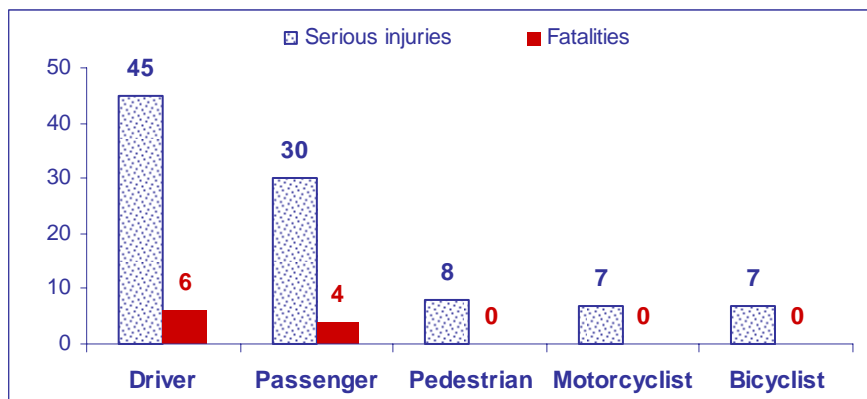
# NT serious injuries/fatalities: Jan - Mar 2005

## 3-4: Serious injuries/fatalities by road user

### Serious injuries

Road users	2005	Average 2000-2004	% Total
Driver	45	46.0	42.9%
Passenger	30	26.6	28.6%
Pedestrian	8	12.2	7.6%
Motorcyclist	7	6.2	6.7%
Bicyclist	7	4.2	6.7%
Motorcycle pillion	0	0.8	0.0%
Passenger - Bus	3	0.6	2.9%
Passenger - Rear utility/truck	1	0.6	1.0%
Passenger - Non-seating position	0	0.2	0.0%
Not stated	4	0.0	3.8%
<b>Total</b>	<b>105</b>	<b>97.4</b>	<b>100.0%</b>

### Top five serious injuries/fatalities by road user

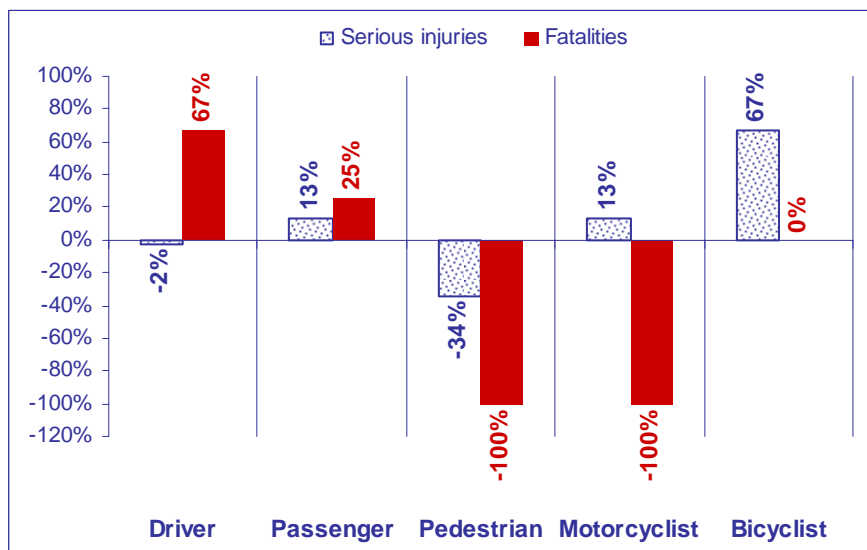


Top five road trauma data for first quarter 2005

### Fatalities

Road users	2005	Average 2000-2004	% Total
Driver	6	3.6	60.0%
Passenger	4	3.2	40.0%
Pedestrian	0	2.0	0.0%
Motorcyclist	0	0.4	0.0%
Passenger - Non-seating position	0	0.4	0.0%
Passenger - Rear utility/truck	0	0.2	0.0%
<b>Total</b>	<b>10</b>	<b>9.8</b>	<b>100.0%</b>

### Top five serious injuries/fatalities by road user - trend 2005



Percentage change between 2005 and corresponding five-year average

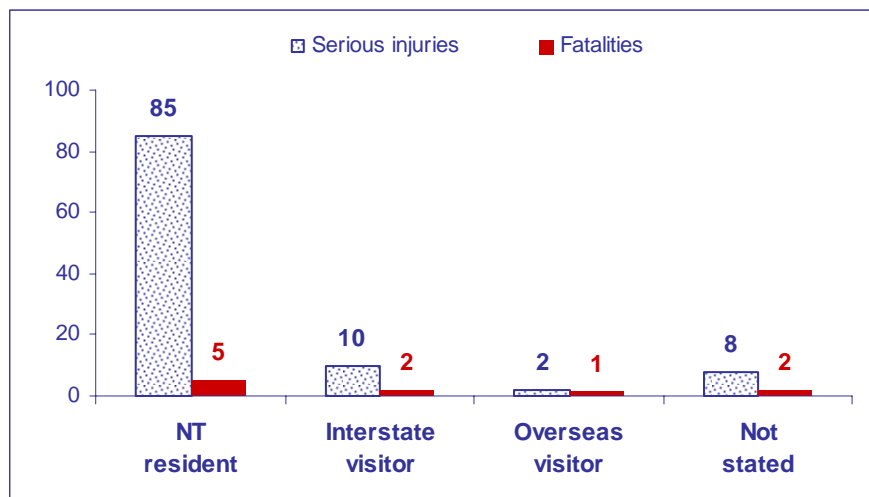
# NT serious injuries/fatalities: Jan - Mar 2005

## 3-5: Serious injuries/fatalities by residency status

### Serious injuries

Residency	2005	Average 2000-2004	% Total
NT resident	85	83.6	81.0%
Interstate visitor	10	5.8	9.5%
Overseas visitor	2	5.8	1.9%
Not stated	8	2.2	7.6%
<b>Total</b>	<b>105</b>	<b>97.4</b>	<b>100.0%</b>

### Serious injuries/fatalities by residency status

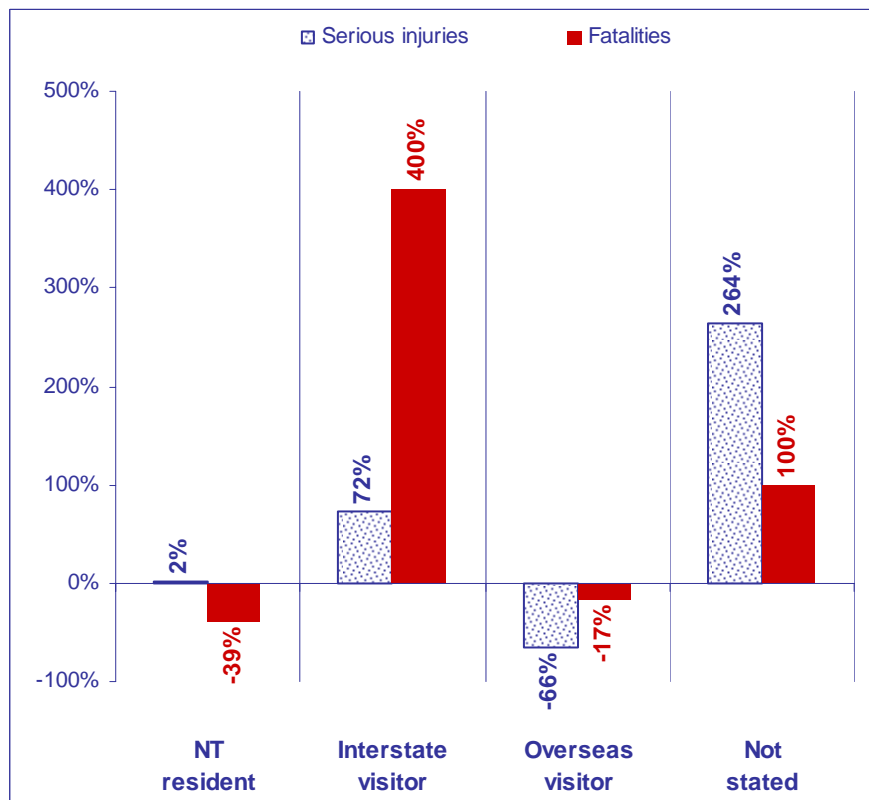


Road trauma data for first quarter 2005

### Fatalities

Residency	2005	Average 2000-2004	% Total
NT resident	5	8.2	50.0%
Overseas visitor	1	1.2	10.0%
Interstate visitor	2	0.4	20.0%
Not stated	2	0.0	20.0%
<b>Total</b>	<b>10</b>	<b>9.8</b>	<b>100.0%</b>

### Serious injuries/fatalities by residency status



Percentage change between 2005 and corresponding five-year average

# NT main causes of road trauma: Jan - Mar 2005

## Alcohol, Speed, Fatigue, Seatbelts and Pedestrians

### 4-1: Alcohol related serious injury/fatal crashes

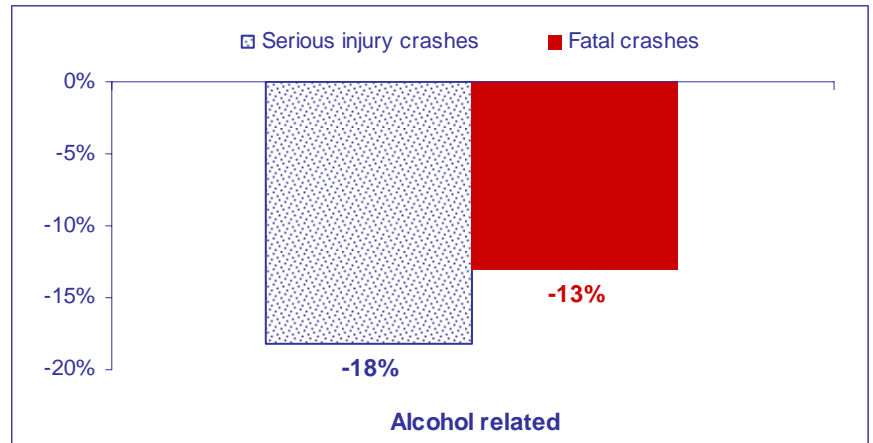
#### Serious injury crashes

Alcohol	2005	Average 2000-2004	% Total
Non-alcohol related	63	60.2	87.5%
Alcohol related	9	11.0	12.5%
<b>Total</b>	<b>72</b>	<b>71.2</b>	<b>100.0%</b>

#### Fatal crashes

Alcohol	2005	Average 2000-2004	% Total
Non-alcohol related	4	4.6	50.0%
Alcohol related	4	4.6	50.0%
<b>Total</b>	<b>8</b>	<b>9.2</b>	<b>100.0%</b>

#### Alcohol related crashes - trend 2005



Percentage change between 2005 and corresponding five-year average

### 4-2: Speed related serious injury/fatal crashes

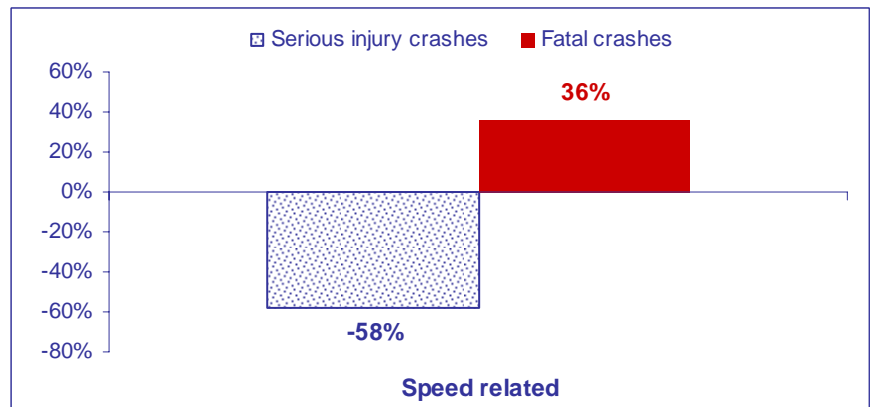
#### Serious injury crashes

Speed	2005	Average 2000-2004	% Total
Non-speed related	68	61.6	94.4%
Speed related	4	9.6	5.6%
<b>Total</b>	<b>72</b>	<b>71.2</b>	<b>100.0%</b>

#### Fatal crashes

Speed	2005	Average 2000-2004	% Total
Non-speed related	5	7.0	62.5%
Speed related	3	2.2	37.5%
<b>Total</b>	<b>8</b>	<b>9.2</b>	<b>100.0%</b>

#### Speed related crashes - trend 2005



Percentage change between 2005 and corresponding five-year average

### 4-3: Fatigue related serious injury/fatal crashes

#### Serious injury crashes

Fatigue	2005	Average 2000-2004	% Total
Non-fatigue related	69	68.2	95.8%
Fatigue related	3	3.0	4.2%
<b>Total</b>	<b>72</b>	<b>71.2</b>	<b>100.0%</b>

#### Fatal crashes

Fatigue	2005	Average 2000-2004	% Total
Non-fatigue related	8	9.2	100.0%
Fatigue related	0	0.0	0.0%
<b>Total</b>	<b>8</b>	<b>9.2</b>	<b>100.0%</b>

# NT main causes of road trauma: Jan - Mar 2005

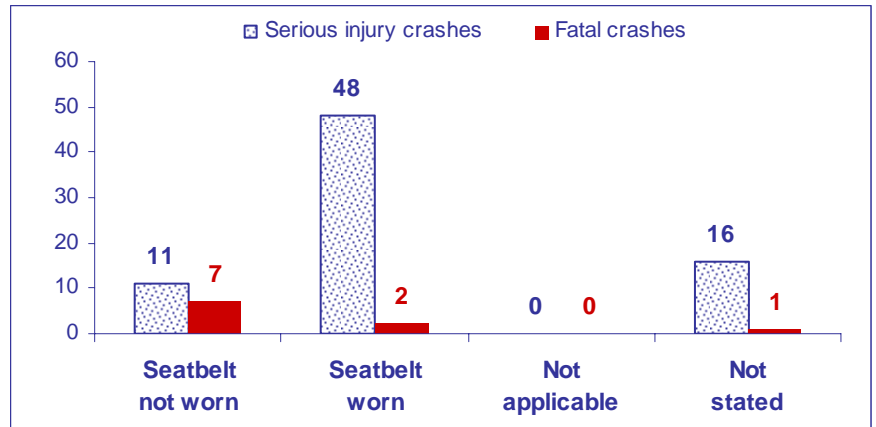
Alcohol, Speed, Fatigue, Seatbelts and Pedestrians

## 4-4: Seatbelt related serious injuries/fatalities

### Serious injuries

Seatbelt	2005	Average 2000-2004	% Total
Seatbelt worn	48	48.8	64.0%
Not stated	16	13.4	21.3%
Seatbelt not worn	11	10.2	14.7%
Not applicable	0	0.2	0.0%
<b>Total</b>	<b>74</b>	<b>72.6</b>	<b>100.0%</b>

### Seatbelt related serious injuries/fatalities

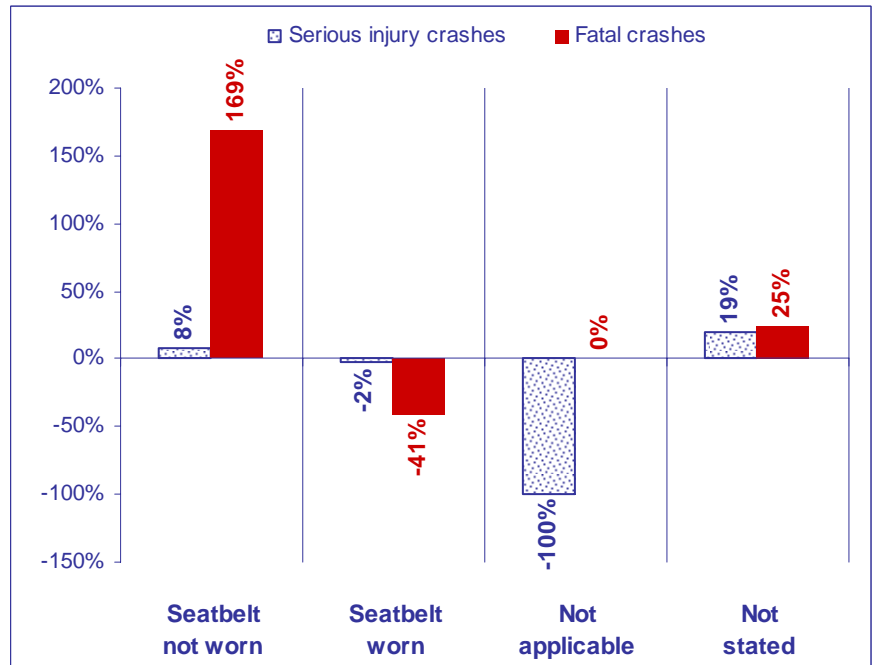


Road trauma data for first quarter 2005

### Fatalities

Seatbelt	2005	Average 2000-2004	% Total
Seatbelt worn	2	3.4	20.0%
Seatbelt not worn	7	2.6	70.0%
Not stated	1	0.8	10.0%
<b>Total</b>	<b>10</b>	<b>6.8</b>	<b>100.0%</b>

### Seatbelt related serious injuries/fatalities - trend 2005



Percentage change between 2005 and corresponding five-year average

# NT main causes of road trauma: Jan - Mar 2005

Alcohol, Speed, Fatigue, Seatbelts and Pedestrians

## 4-5: Pedestrian related serious injuries/fatalities

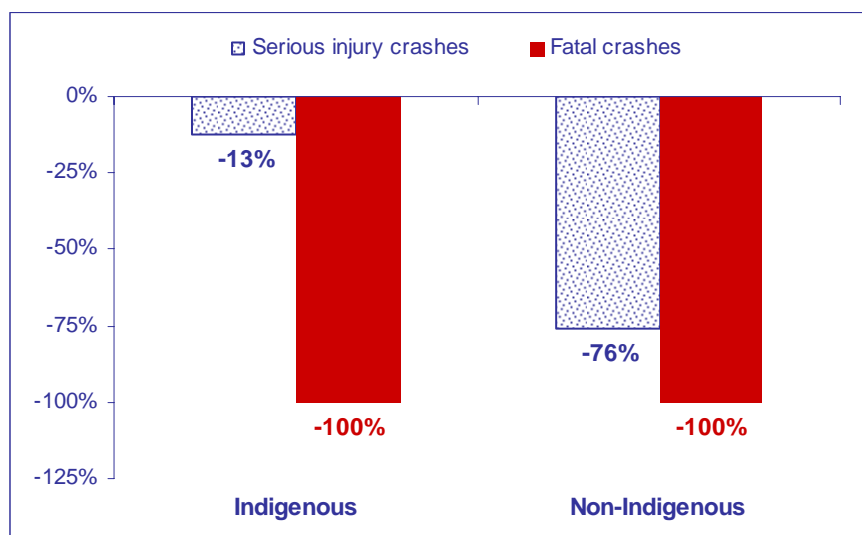
### Serious injuries

Pedestrians	2005	Average 2000-2004	% Total
Indigenous	7	8.0	87.5%
Non-Indigenous	1	4.2	12.5%
<b>Total</b>	<b>8</b>	<b>12.2</b>	<b>100.0%</b>

### Fatalities

Pedestrians	2005	Average 2000-2004	% Total
Indigenous	0	1.8	0.0%
Non-Indigenous	0	0.2	0.0%
<b>Total</b>	<b>0</b>	<b>2.0</b>	<b>0.0%</b>

### Pedestrian related serious injuries/fatalities - trend 2005



Percentage change between 2005 and corresponding five-year average