



Road Fatalities in the Northern Territory for the Period 01 January to 30 September 2002 Status Report

There were 37 road fatalities in the Northern Territory from 01 January to 30 September 2002 compared to 35 at the same time in 2001. The 37 deaths were a result of 27 fatal crashes compared to 30 for the same time in 2001.

27 fatal crashes:

- ◆ 7 occurred where the car ran off the road without colliding into something first.
- ◆ 8 were pedestrians struck by vehicles.
- ◆ 1 resulted from a "sideswipe".
- ◆ 2 resulted from animals struck by vehicles.
- ◆ 6 were single vehicle roll overs.
- ◆ 1 was a head on collision.
- ◆ 2 were angle collisions.

27 fatal crashes:

- ◆ 21 occurred in rural areas and 6 in urban areas.
- ◆ 23 occurred on sealed-dry roads and 4 on unsealed-dry road.

37 fatalities:

- ◆ 27 were male and 10 were female.
- ◆ 28 were NT residents (19 Aboriginals & 9 were non-Aboriginals), 3 were interstate visitors and 6 overseas visitors.

Of the 19 Aboriginal NT resident fatalities:

- ◆ 3 drivers – 2 did not wear a seatbelt and 1 unknown.
- ◆ 10 passengers - 7 were not wearing a seatbelt and 3 unknown.
- ◆ 6 pedestrians.

Of the 9 non-Aboriginal NT resident fatalities:

- ◆ 4 drivers – 2 were wearing a seatbelt, 1 did not and 1 unknown.
- ◆ 3 passengers – 1 was wearing a seatbelt and 2 did not.
- ◆ 2 motorcyclists.

Of the 3 interstate visitor fatalities:

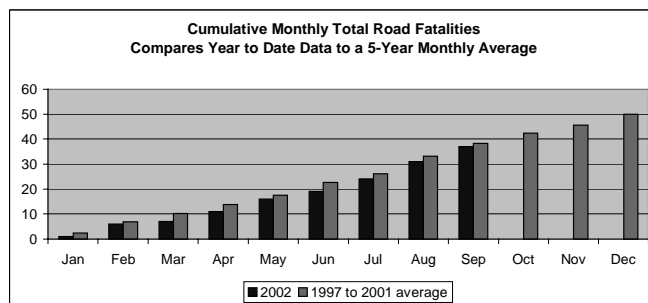
- ◆ 1 passenger - was wearing a seatbelt.
- ◆ 2 pedestrians.

Of the 6 overseas visitor fatalities:

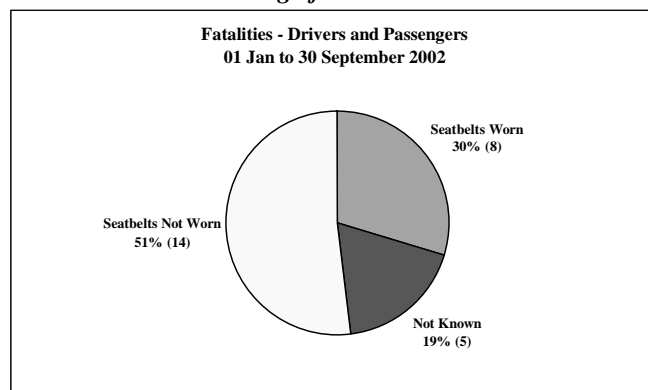
- ◆ 2 drivers - 1 was wearing a seatbelt and 1 did not.
- ◆ 4 passengers - 3 were wearing a seatbelt and 1 did not.

Road Fatalities: -

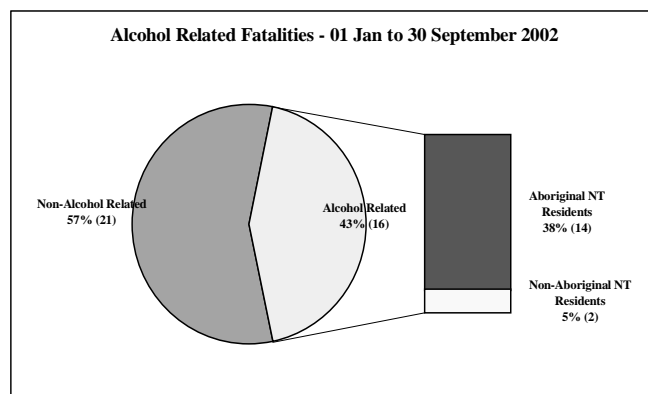
Year	NT	NT Per 100,000 Population	Australia Per 100,000 Population
2001	50	25.3	9.06
2000	51	26.2	9.49
1999	49	25.4	9.28



Non-Wearing of Seatbelt Fatalities



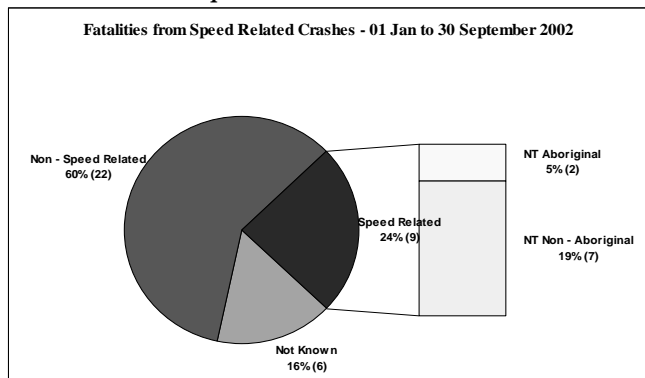
Alcohol Related Fatalities





Road Fatalities in the Northern Territory for the Period 01 January to 30 September 2002 Status Report

Speed Related Fatalities



Vehicle Crashes Involving Heavy Vehicles:

Heavy Vehicles Involved Crashes 01 Jan to 30 September 2002	Driver Not Wearing Seatbelt	Driver BAC > 0	Speed Related	Fatigue Related
Fatal	0	0	0	0
Serious Injury	0	0	0	0
Minor Injury	0	0	0	0
Non-injury	1	0	1	0
Total	1	0	1	0

01 Jan to 30 September 2002

Highest Injury Level Crashes	Bus & Coach		Rigid Truck > 4.5 GVM		Articulated Vehicle (Semi)		Road Train (Double)		Road Train (Triple)		Total
	NT	Int.	NT	Int.	NT	Int.	NT	Int.	NT	Int.	
Fatal									1		1
Serious	1		3	1	1						6
Minor	4		5				2		4	3	18
Non-injury	12		19	5	3	1	1	1	5	5	52
Total	17		33		5		4		18		77

Note: Int. = Interstate

Highest Injury Level Crashes	12 months to 30 September 2001		12 months to 30 September 2002		% Change	
	NT	Int.	NT	Int.	NT	Int.
Fatal	2	0	1	0	-50.0%	0.0%
Serious	10	2	6	3	-40.0%	50.0%
Minor	9	6	17	3	88.9%	-50.0%
Non-injury	49	15	48	16	-2.0%	6.7%
Total		93		94		1.08%

This report is produced using the Vehicle Accident Database. Information is correct as at 30 September 2002.

Contact Officers
Graham Kwong Research /Project Officer, tel: 89247147
Don Shean, VADB Manager, tel: 89247352

Annual Fatality Statistics

Year	1998	1999	2000	2001	2002
Aboriginal NT Residents	28	17	18	24	19
Non - Aboriginal NT Residents	25	24	23	12	9
Interstate visitors	6	4	3	5	3
Overseas visitors	10	4	7	9	6
Total	69	49	51	50	37

	12 months to 30 September 2001	12 months to 30 September 2002	% Change
Total Fatalities	48	52	8.3%
Total Injuries	1242	959	-22.8%
Total Fatal Crashes	43	40	-7.0%
Total Injury Crashes	861	654	-24.0%
Total Non-injury Crashes	1696	1371	-19.2%
Seatbelt not Worn Fatalities			
Fatalities	18	20	11.1%
Injuries	71	42	-40.8%
Speed- Related			
Fatal Crashes	5	9	80.0%
Injury Crashes	87	63	-27.6%
Non-injury Crashes	114	91	-20.2%
Alcohol-Related			
Fatal Crashes	16	21	31.3%
Injury Crashes	98	52	-46.9%
Non-injury Crashes	96	80	-16.7%

Accidents within the last four (4) weeks may not be reflected in the Vehicle Accident Database

