



Road Fatalities in the Northern Territory For January 2002 Status Report

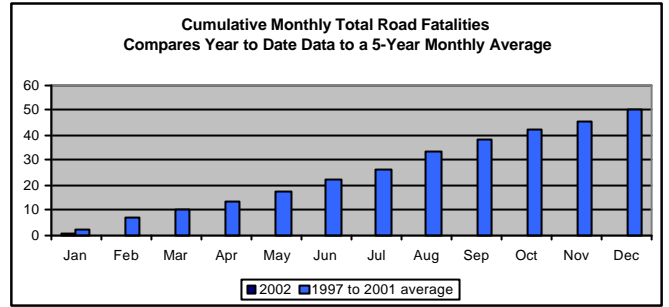
There was 1 road fatality in the Northern Territory for January 2002, which is 2 less than the same time in 2001. The death resulted from a motor vehicle crash.

Summary - Year to Date

- See Details Below.

Road Fatalities: -

Table with 4 columns: Year, NT, NT Per 100,000 Population, Australia Per 100,000 Population. Rows for 2001, 2000, and 1999.



1 fatal crash:

- The car ran off the road without colliding into something first.

1 fatal crash:

- Occurred in a rural area.
Occurred on sealed-dry road.

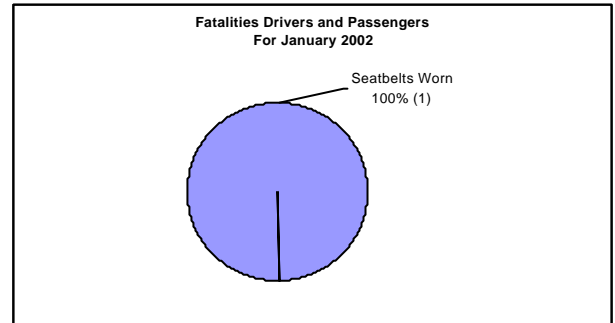
1 fatality:

- Male.
Interstate visitor.

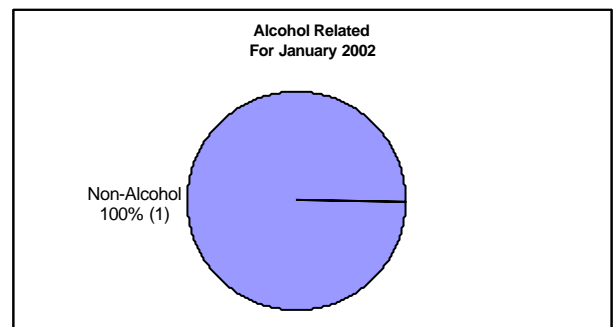
1 interstate visitor fatality:

- Passenger - was wearing a seatbelt.

Non-Wearing of Seatbelt Fatalities



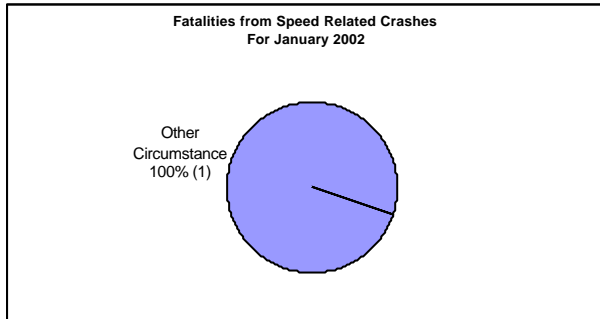
Alcohol Related Fatalities





Road Fatalities in the Northern Territory For January 2002 Status Report

Speed Related Fatalities



Vehicle Crashes Involving Heavy Vehicles:

Heavy Vehicles Involved (For January 2002)	Driver Not Wearing Seatbelt	Driver BAC > 0	Speed Related	Fatigue Related
Fatal Crashes	0	0	0	0
Serious Injury Crashes	0	0	0	0
Minor Injury Crashes	0	0	0	0
Non-injury Crashes	0	0	0	0
<b>Total</b>	<b>0</b>	<b>0</b>	<b>0</b>	<b>0</b>

Annual Fatality Statistics

Year	1997	1998	1999	2000	2001
Non - Aboriginal NT Residents	22	25	24	23	12
Aboriginal NT Residents	27	29	17	18	25
Interstate visitors	9	5	4	3	4
Overseas visitors	2	10	4	7	9
<b>Total</b>	<b>60</b>	<b>69</b>	<b>49</b>	<b>51</b>	<b>50</b>

For January 2002

Highest Injury Level Crashes	Bus & Coach		Rigid Truck > 4.5 GVM		Articulated Vehicle (Semi)		Road Train (Double)		Road Train (Triple)		Total
	NT	Int.	NT	Int.	NT	Int.	NT	Int.	NT	Int.	
Fatal											
Serious											
Minor										1	1
Non-injury	1									1	2
<b>Total</b>	<b>1</b>	<b>0</b>	<b>0</b>	<b>0</b>	<b>0</b>	<b>0</b>	<b>0</b>	<b>2</b>	<b>3</b>		

Note: Int. = Interstate

	12 months to Jan 2001	12 months to Jan 2002	% Change
<b>Total Fatalities</b>	51	48	-5.9%
<b>Total Injuries</b>	1233	987	-20.0%
<b>Total Fatal Crashes</b>	48	41	-14.6%
<b>Total Injury Crashes</b>	845	692	-18.1%
<b>Total Non-injury Crashes</b>	1484	1564	5.4%
<b>Seatbelt not Worn Fatalities</b>			
Fatalities	10	16	60%
Injuries	61	49	-19.7%
<b>Speed-Related</b>			
Fatal Crashes	9	3	-66.7%
Injury Crashes	78	80	-2.6%
Non-injury Crashes	91	105	15.4%
<b>Alcohol-Related</b>			
Fatal Crashes	19	8	-57.9%
Injury Crashes	101	68	-32.7%
Non-injury Crashes	86	80	-7.0%

Highest Injury Level Crashes	12 months to January 2001		12 months to January 2002		% Change	
	NT	Int.	NT	Int.	NT	Int.
Fatal	5	0	1	0	-80.0%	-0.0%
Serious	8	1	8	2	-0.0%	100.0%
Minor	18	6	5	1	-72.2%	-83.3%
Non-injury	45	14	56	12	24.4%	-14.3%
<b>Total</b>	<b>97</b>	<b>85</b>	<b>85</b>	<b>85</b>	<b>-12.4%</b>	

This report is produced using the Vehicle Accident Database. Information is correct as at 31 Jan 2001.

Contact Officers

Graham Kwong Research /Project Officer, tel: 89247147  
Don Shean, VADB Manager, tel: 89247352

