

This brief contains key points extracted from publications that have reported social statistics about the Northern Territory. The summary is not exhaustive and does not interpret information nor in all cases contain qualifiers or contextual information. Readers should check cited publications to assess suitability for the intended use. Care should be taken to ensure that population-based statistics reported for the Northern Territory do not refer to urban areas only. Although all due care has been exercised in the preparation of this document, no responsibility is accepted for any errors or omissions.

Covered in this issue (alphabetical order):

<b>Aboriginal and Torres Strait Islander Home Ownership: A Snapshot 2006</b>	<b>2</b>
The Territory had the lowest home ownership rates for both Indigenous and non-Indigenous households.	2
<b>Apprentices and Trainees, September quarter 2008</b>	<b>2</b>
In the Territory in the September quarter 2008, the number of apprentices and trainees in training was higher than in the September quarter 2007, the total number of both commencements and completions both declined over the year.	2
<b>Australian Social Trends, March quarter 2009</b>	<b>3</b>
In 2004-05, the Territory reported the highest obesity rate for males aged 15 years and over, but had the lowest obesity rate for females aged 15 years and over.	3
<b>Causes of Death, 2007</b>	<b>4</b>
In 2007, cancer and cardiovascular disease were the main causes of death in the Territory and nationally.	4
<b>Corrective Services, Australia, December quarter 2008</b>	<b>5</b>
In the December quarter 2008 the Territory had the highest imprisonment rate of all jurisdictions.	5
<b>Health and community services labour force 2006</b>	<b>6</b>
In 2006 the Territory recorded the lowest number of workers per capita in health occupations but had the highest number of workers in community service occupations.	6
<b>Patterns of mortality in Indigenous adults in the NT, 1998-2003</b>	<b>6</b>
Cardiovascular disease was the leading cause of death in NT Indigenous adults in all three remote regions, followed by diabetes and renal disease (Table 3).	6
<b>Schools 2008</b>	<b>7</b>
Between 1998 and 2008 the proportion of Indigenous full-time equivalent students increased, while the number of schools also increased over the same period.	7

## Aboriginal and Torres Strait Islander Home Ownership: A Snapshot 2006

Source: Australian Bureau of Statistics, ABS Cat. no. 4722.0.55.005

This snapshot provides information about home ownership rates for Indigenous and non-Indigenous households using Census data. Households with at least one usual resident of Aboriginal and/or Torres Strait Islander descent are referred to as 'Indigenous households' and may include one or more non-Indigenous usual residents. Households in which there were no Indigenous usual residents identified, are referred to as 'other households'

### Key Point:

The Territory had the lowest home ownership rates for both Indigenous and non-Indigenous households.

In the Territory in 2006:

- Indigenous households had the lowest level of home ownership for all jurisdictions (20 per cent), compared to the national proportion for Indigenous households (35.9 per cent).
- Non-Indigenous households had the lowest level of home ownership (56.4 per cent), significantly lower than the national proportion (71 per cent).
- 76 per cent of Indigenous households were renting, much higher than the national proportion for Indigenous households (61.9 per cent).

## Apprentices and Trainees, September quarter 2008

Source: National Centre for Vocational Education and Research (NCVER)

This quarterly publication presents statistics on apprentice and trainee activity in Australia for the September quarter 2008 based on administrative data provided by state and territory authorities.

### Key Point:

In the Territory in the September quarter 2008, the number of apprentices and trainees in training was higher than in the September quarter 2007, the total number of both commencements and completions both declined over the year.

For apprentices and trainees in the Territory:

### In-training at 30 September 2008

- Estimated at 3800, 15 per cent more than at 30 September 2007 (3300), while national estimates increased by 3 per cent over the same period.
- Predominant characteristics: male (68 per cent); aged 25 to 44 years (34 per cent); and traditional trades (53 per cent).

### Commencements during September quarter 2008

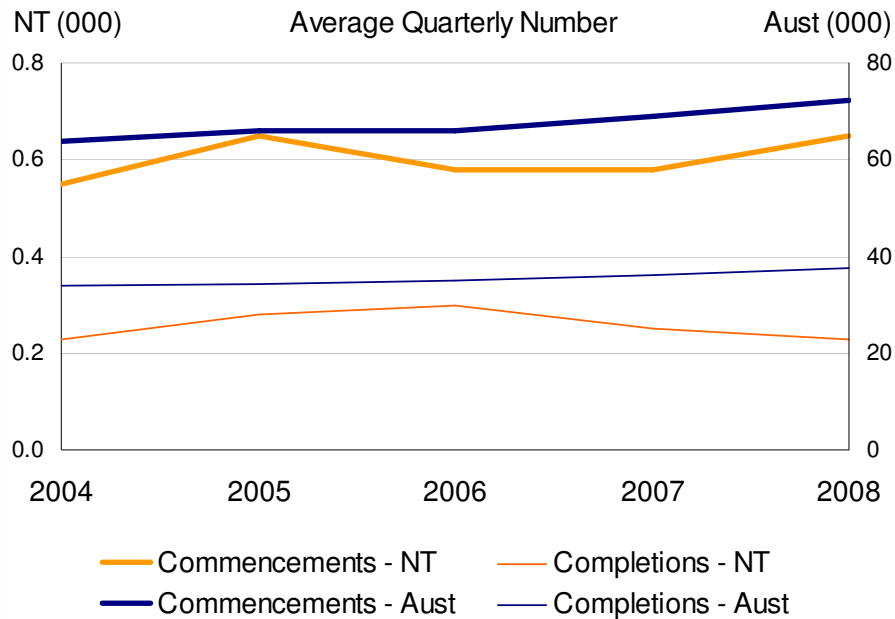
- Estimated at 500, 17 per cent less than the September quarter 2007 (600), while national estimates increased 1 per cent over the same period.
- Predominant characteristics: male (60 per cent); aged 19 years or under and 25 to 44 years (40 per cent respectively); and traditional trades (40 per cent).
- The average quarterly number commencing in the 12 months to 30 September 2008 (650) was higher than in the 12 months to 30 September 2004 (550) (Chart 1).

### Completions during September quarter 2008

- Estimated at 200, 33 per cent lower than in the September quarter 2007.
- Predominant characteristics: male (50 per cent) and traditional trades (50 per cent).

- The average quarterly number of completions in the 12 months to 30 September 2008 (225) was the same as in the 12 months to 30 September 2004 (Chart 1).

**Chart 1: Apprentices and Trainees, Northern Territory and Australia, 2004 to 2008**



Source: NCVET Apprentices and Trainees

## Australian Social Trends, March quarter 2009

Source: Australian Bureau of Statistics, ABS Cat. no. 4102.0

This is the first quarterly report of Australian Social Trends issued by ABS, after previously being released as an annual publication. The report presents information on contemporary social issues and areas of public policy concern such as population, family and community, health, education and training, work, economic resources, housing, crime and justice, culture and leisure, and the environment. Unpublished and published information from the ABS and other national and international sources are presented.

### Key Point:

In 2004-05, the Territory reported the highest obesity rate for males aged 15 years and over, but had the lowest obesity rate for females aged 15 years and over.

### Family and Community

In the Territory in 2006:

- 75.4 per cent of couple families with children under 15 years had both parents working, higher than the national proportion (59.9 per cent).
- More children under the age of 15 years lived in one parent families (25.7 per cent) than nationally (19.5 per cent).

### Health

In the Territory:

- More children aged 72-75 months were fully immunised (88.4 per cent) in 2007 than in 2002 (82.8 per cent).
- In 2004-05, the Territory had the highest proportion of obese males aged 15 years and over (62.6 per cent), higher than the national proportion (59.4 per cent), however the Territory had the lowest proportion of obese females aged 15 years and over (28.9 per cent), compared to 43.1 per cent nationally.

### Education and Training

In the Territory in 2007:

- Year 7 or Year 8 to Year 12 apparent retention rates increased from 42 per cent in 1997 to 62 per cent, lower than the national apparent retention rates of 72 per cent in 1997 and 74 per cent in 2007.
- 51 per cent of school leavers aged 15-19 years were not fully engaged in education or employment, the highest of all jurisdictions and higher than the national proportion (28 per cent).

### Work

In the Territory in 2006-07:

- 20 per cent of those employed worked on a part time basis, the lowest proportion of all jurisdictions and lower than the national proportion (29 per cent). Average part time hours worked per week (18 hours) were the highest of the jurisdictions (national average 16.1 hours).
- 68 per cent of the population was employed the second highest of all jurisdictions, behind the ACT (71 per cent) and higher than the national proportion (62 per cent).

### Economic Resources

In the Territory in 2006-07:

- The gross household disposable income per person of \$32 000 was the equal second highest with Victoria and behind the Australian Capital Territory (\$49 900). (ABS Cat. no. 5222.0).

### Housing

In the Territory in 2007:

- The average loan for first home buyers was \$202 600, the third lowest of all jurisdiction and below the national average (\$230 000).

### Environment

In the Territory in 2008:

- 54 per cent of households in the Northern Territory used solar energy to heat water the highest proportion of all jurisdictions, followed by Western Australia (21 per cent).

## Causes of Death, 2007

Source: Australian Bureau of Statistics, ABS Cat. no. 3303.0

This annual publication presents information about deaths registered in Australia in 2007. The data is sourced from administrative data provided by relevant agencies in each state and territory. A proportion of deaths may not be correctly identified by Indigenous status due to incomplete data and incorrect identification.

### Key Point:

In 2007, cancer and cardiovascular disease were the main causes of death in the Territory and nationally.

In 2007, for the 1001 registered deaths of Territory usual residents:

- Males accounted for 63 per cent of deaths, larger than the national proportion of 51 per cent, while Indigenous deaths accounted for 46 per cent (excludes Indigenous status not stated).
- Cancer (24.2 per cent) and cardiovascular disease (23.9 per cent) were the main causes of death, as they were nationally (29.2 per cent and 33.8 per cent respectively).
- Ischaemic heart disease was the leading underlying cause of death for the Indigenous (10.4 per cent) and non-Indigenous population (11.7 per cent) (Table 1).
- Diabetes was the second highest underlying cause of death for the Indigenous population (7.8 per cent), while it ranked seventh for the non-Indigenous population (3.9 per cent).
- 17.2 per cent of deaths were from external causes, significantly higher than the national proportion (5.7 per cent).

- Of the 54 suicides reported, males accounted for 45 suicides (84 per cent), while females accounted for 9 suicides (16.7 per cent). Suicide was the third highest underlying cause of death for Indigenous Territorians (5.9 per cent).

**Table 1: Underlying causes of death, Northern Territory, 2007\***

	% of Indigenous deaths	Rank of Indigenous deaths	% of non-Indigenous deaths	Rank of non-Indigenous deaths
Ischaemic heart disease	10.4	1	11.7	1
Diabetes	7.8	2	3.9	7
Suicide	5.9	3	5.0	4
Chronic lower respiratory disease	5.0	4	4.7	5
Land Transport accidents	5.0	5	3.9	7
Trachea and lung cancer	4.8	6	7.1	2
Strokes	4.6	7	5.8	3

\*Indigenous status unknown not included

Source: ABS Cat. No. 3303.0

## Corrective Services, Australia, December quarter 2008

Source: Australian Bureau of Statistics, ABS Cat. no. 4512.0

This quarterly publication presents information based on administrative data for persons in adult custody facilities or directed to serve community-based orders administered by adult corrective services agencies. In all states and territories, persons are considered adults if aged 18 years and over, except Queensland (17+).

### Key Point:

In the December quarter 2008 the Territory had the highest imprisonment rate of all jurisdictions.

In the December quarter 2008 the Territory had:

- The highest average daily imprisonment rates per 100 000 adult population of all jurisdictions for male (1146), female (63) and all prisoners (629), above respective national rates. All Territory rates were higher than in the December quarter 2007 (Table 2).
- An average daily number of total prisoners of 993, 5 per cent higher than the previous quarter (947) and 18 per cent higher than the December quarter 2007 (843).
- An average daily number of Indigenous prisoners of 815, 4 per cent higher than the previous quarter (782) and 18 per cent higher than the December quarter 2007 (688).
- The fourth highest average imprisonment rate per 100 000 adult Indigenous population (2151), below the national average (2240) (Table 2).

**Table 2: Imprisonment rates, Northern Territory and Australia, December quarter, 2007 and 2008**

	All		Indigenous	
	NT	Australia	NT	Australia
<b>December quarter 2007</b>	rate per relevant 100 000 adult population			
Male	1 008	308	3 613	4 092
Female	51	23	164	376
All	550	163	1 850	2 174
<b>December quarter 2008</b>				
Male	1 146	313	4 182	4 244
Female	63	23	205	357
All	629	166	2 151	2 240

Source: ABS Cat. no. 4512.0

\* In Australia, imprisonment rates decrease in older age groups so it is likely the Indigenous imprisonment rate will be higher than the non-Indigenous rate because of the larger proportion of young people in the Indigenous population. At 30 June 2008, the national age standardised ratio of Indigenous to non-Indigenous rates of imprisonment was 13:1 (ABS Cat. no. 4517.0, Prisoners in Australia, 2007).

## Health and community services labour force 2006

Source: Australian Institute of Health and Welfare (AIHW). AIHW Cat. no. HWL 43

The report provides information on the number of health and community services workers, along with their demographic and work characteristics. Information is obtained primarily from Census 2006.

### Key Point:

In 2006 the Territory recorded the lowest number of workers per capita in health occupations but had the highest number of workers in community service occupations.

In the Territory in 2006:

- There were 1817 workers per 100 000 population in community services occupations the highest of all jurisdictions and above the national rate (1422 per 100 000).
- There were 682 child and youth service workers per 100 000 population, the second highest of the jurisdictions and higher than the national rate (570 per 100 000).
- There were 2315 workers per 100 000 population employed in health occupations, the lowest rate of all jurisdictions and lower than the national rate (2649 per 100 000).
- The second lowest rate of nursing workers was recorded (971 per 100 000), compared with 1073 per 100 000 nationally.
- The smallest growth rate of health and community service workers since the last Census was recorded (470 workers per 100 000) compared with the national growth rate (652 per 100 000).

## Patterns of mortality in Indigenous adults in the NT, 1998-2003

Source: Andreasyan, K., Hoy, WE. *Medical Journal of Australia* vol 190, no. 6

This research paper uses Australian Bureau of Statistics (ABS) mortality data to compare rates of death from chronic diseases in the Territory's Indigenous populations with rates in the Australian population, over the period 1998-2003. NT data sourced from records administered by the Office of Births, Deaths and Marriages.

### Key Point:

Cardiovascular disease was the leading cause of death in NT Indigenous adults in all three remote regions, followed by diabetes and renal disease (Table 3).

In the Territory for the period 2001-2003:

- The Indigenous mortality rate for all causes of death was highest in remote regions (503.7 per 10 000 population) followed by outer regional (243.8) and very remote (149.1).
- In remote regions cardiovascular disease was the leading cause of death (254.6 per 10 000 population), followed by renal disease (119.5) and diabetes (103.8).
- The outer regional area recorded the highest average annual increase in the Indigenous mortality rate for all causes of death, increasing 4.4 per cent since 1998 compared to very remote (1.1 per cent increase) and remote (5.3 per cent decrease) for the same period.

**Table 3: Age-Standardised rates, Indigenous mortality (per 10 000 population), by remoteness category, NT, 1998-2003\***

Cause of Death	Outer Regional		Remote		Very Remote	
	1998-2000	2001-2003	1998-2000	2001-2003	1998-2000	2001-2003
All causes	195.6	243.8	633.3	503.7	151.1	149.1
Cardiovascular disease	119.0	133.8	367.4	254.6	82.7	73.3
Diabetes	39.1	50.7	103.5	103.8	22.8	26.1
Renal disease	47.0	77.5	153.3	119.5	32.5	42.0
Accidents	21.9	24.5	51.9	46.0	10.9	9.6
Suicide	2.1	6.7	8.3	9.0	0.9	1.8
Homicide	0.0	1.9	4.2	3.3	0.0	0.6

Rates are standardised to the 2001 total Australian population

**Source:** Medical Journal of Australia, 2009

## Schools 2008

*Source: Australian Bureau of Statistics, ABS cat. no. 4221.0*

This annual publication presents information about government and non-government schools, students and staff collected by the National Schools Statistics Collection (NSSC) and administered by the Department of Education and Training (DET) in the NT.

**Note:** Structure of schooling in the Northern Territory changed in 2008 with the introduction of Middle School (year 7 – 9). Year 7 is now considered secondary education and affects comparisons of school student and staff data with previous years.

### Key Point:

Between 1998 and 2008 the proportion of Indigenous full-time equivalent students increased, while the number of schools also increased over the same period.

In the Territory in 2008:

- There were 187 schools (151 government and 36 non-government), an increase of 4.2 per cent (8 schools, 2 government, 6 non-government) from 1998, compared to a 0.3 per cent decline (25 schools) nationally.
- Primary school students (up to year 6) accounted for 59.6 per cent of total students, higher than the national proportion (56.8 per cent).
- 40.7 per cent (15 893 students) of all full-time equivalent (FTE) students were Indigenous, compared to a national proportion of 4.4 per cent, and up from 35.2 per cent (12 917) reported in 1998.
- Between 1998 and 2008 the proportion of FTE male teachers decreased from 27.8 per cent to 26.5 per cent, as it did nationally (34.5 per cent to 31 per cent).
- School participation rates for 15 year olds (77 per cent) were the lowest of all jurisdictions, and a decrease from 81.9 per cent reported in 1998, compared to an increase nationally over the same period (93.3 per cent to 94.7 per cent).
- The FTE students/teacher ratio was 12.8 for primary schools, the lowest of all jurisdictions and down from 15.0 reported in 1998, nationally the ratio decreased from 17.9 to 15.8 over the same period.
- The FTE student/teacher in secondary schools increased to 12.3 from 11.4 reported in 1998, compared to a decrease nationally from 12.8 to 12.0.