

Grocery Price Survey

December 2006

Survey Coverage

The Grocery Price Survey (GPS) measures the cost of purchasing an average basket of goods at 25 supermarkets across both the Northern Territory and, for comparative purposes, Northern Queensland. (Note: in this latest survey the number of stores participating in the survey decreased by one with the closure of Darwin's Knuckey Street Woolworths.)

Strong price increases across most regions

The December 2006 GPS reports strong price increases in most surveyed regions, broadly consistent with movements in the 'food' category of the Darwin Consumer Price Index (CPI), as compiled by the ABS. While prices growth was strong in the six months to December 2006, it has moderated significantly from the growth recorded in the June 2006 GPS.

In Darwin, the cost of the basket increased by 2.2% in the six months since June 2006, compared to 5.1% in the last survey. In other regions, the cost of the basket increased by 3.8% in Alice Springs, 1.8% in Katherine, 4.7% in Nhulunbuy, 1.3% in Yulara, 2.3% in Cairns and 1.0% in Mt Isa. The 'food' component of Darwin's CPI – which, by including 'meals out and take away foods' and excluding 'household supplies', uses a slightly different basket than the Grocery Price Survey - increased by 3.1% over the same period.

In the December 2006 GPS, Nhulunbuy replaced Yulara as the most expensive location to purchase the surveyed basket of groceries. This reflects freight costs, limited economies of scale and competition, and the inflationary effects of the \$3 billion Alcan G3 refinery expansion on the local economy. Cairns recorded the lowest cost basket of the centres surveyed, followed by Alice Springs, Mount Isa, Katherine, Darwin, Yulara and Nhulunbuy.

Fruit & Vegetables, Meat & Seafoods major contributors to growth

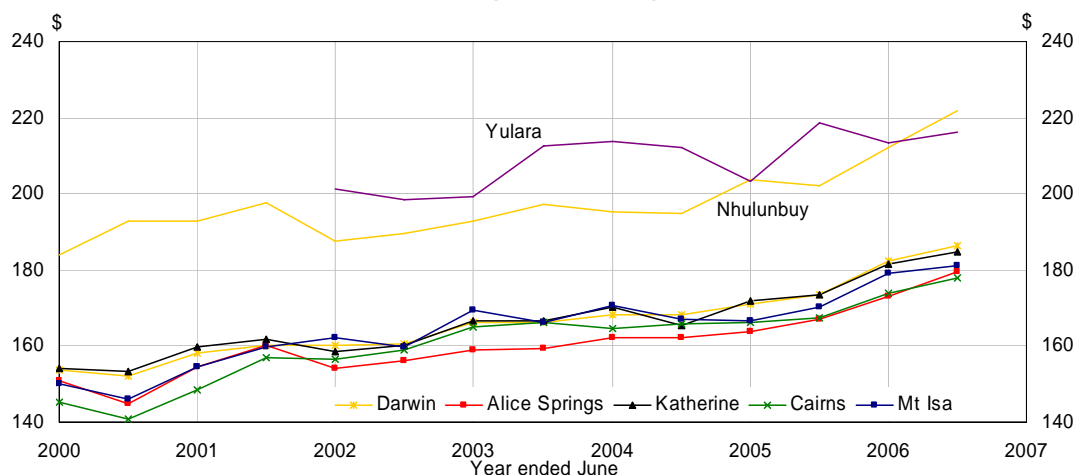
Despite a fall in banana prices across all centres, the Fruit & Vegetable category was again a significant driver of the rise in cost of the total basket in Darwin, Alice Springs, Katherine and Nhulunbuy. The increase resulted from rises in a number of fruit prices. Meat & Seafood also contributed significantly to total price increases in Nhulunbuy, Yulara, Cairns and Mount Isa.

Compared to December 2005, the cost of the basket increased by 7.4% in Darwin, 7.5% in Alice Springs, 6.4% in Katherine, 9.9% in Nhulunbuy, 6.1% in Cairns and 6.4% in Mount Isa. It fell by 1.2% in Yulara.

Introduction of Series Two

A review conducted in 2005 resulted in the survey being updated (from Series One to Series Two), which has allowed the basket to remain consistent with changing consumer expenditure patterns. This survey is the last time Series One data will be collected and reported on, with detailed reporting on Series Two beginning in June 2007.

Cost to Purchase the (Series One) Basket of Goods



Source: NT Treasury



Grocery Price Survey - December 2006*

Expenditure Category	Darwin			Alice Springs			Katherine			Nhulunbuy			Yulara			Cairns			Mount Isa		
	Expenditure (\$)	6 mth % Change	Ppt contrib to Change	Expenditure (\$)	6 mth % Change	Ppt contrib to Change	Expenditure (\$)	6 mth % Change	Ppt contrib to Change	Expenditure (\$)	6 mth % Change	Ppt contrib to Change	Expenditure (\$)	6 mth % Change	Ppt contrib to Change	Expenditure (\$)	6 mth % Change	Ppt contrib to Change	Expenditure (\$)	6 mth % Change	Ppt contrib to Change
Dairy & Related Products	17.71	3.4	0.3	16.81	5.0	0.5	17.57	5.4	0.5	19.63	1.2	0.1	20.17	6.3	0.6	16.44	1.8	0.2	17.08	3.4	0.3
Bread & Cereal Products	19.18	3.4	0.3	18.49	2.9	0.3	19.25	1.5	0.2	21.42	-0.5	0.0	26.18	3.3	0.4	18.07	3.5	0.3	18.16	3.2	0.3
Meat & Seafoods	27.14	-1.1	-0.2	26.66	3.1	0.5	27.01	-1.0	-0.1	33.35	6.8	1.0	29.78	5.9	0.8	26.05	5.8	0.8	27.32	6.4	0.9
Fruit & Vegetables	35.22	7.8	1.4	33.47	11.9	2.0	33.29	2.9	0.5	44.97	5.1	1.0	30.06	-2.8	-0.4	32.80	2.8	0.5	33.21	-0.6	-0.1
Non-Alcoholic Drinks & Snacks	27.39	2.0	0.3	26.26	2.0	0.3	27.53	2.5	0.4	33.39	6.1	0.9	40.27	1.3	0.2	26.78	3.5	0.5	26.47	-1.7	-0.2
Other Food	17.09	-0.7	-0.1	16.90	2.3	0.2	16.81	-1.6	-0.2	19.48	2.9	0.3	20.06	-2.5	-0.2	16.41	2.6	0.2	16.57	-1.8	-0.2
Household Supplies	17.14	-0.3	0.0	16.41	-3.1	-0.3	16.87	-0.1	0.0	20.66	10.3	0.9	20.31	-1.3	-0.1	16.63	-3.6	-0.4	16.91	-2.0	-0.2
Pharmaceuticals	8.39	-6.7	-0.3	8.37	-2.4	-0.1	8.72	-4.7	-0.2	9.55	-5.4	-0.3	9.90	-6.7	-0.3	8.37	-3.7	-0.2	8.42	-1.0	0.0
Pet Foods	5.35	8.6	0.2	5.16	8.2	0.2	5.58	12.7	0.3	6.24	9.9	0.3	5.99	2.4	0.1	5.03	5.5	0.2	5.33	6.7	0.2
Personal Care Products	11.76	3.1	0.2	11.15	2.8	0.2	12.18	7.7	0.5	13.27	9.1	0.5	13.34	6.7	0.4	11.18	0.8	0.1	11.47	1.1	0.1
Total (\$)	186.38	2.2	2.2	179.67	3.8	3.8	184.80	1.8	1.8	221.97	4.7	4.7	216.06	1.3	1.3	177.75	2.3	2.3	180.94	1.0	1.0
June 2006 (\$)	182.39			173.15			181.51			212.01			213.27			173.82			179.11		
\$ Change from June 2006	3.98			6.52			3.30			9.96			2.79			3.93			1.83		
% Change from June 2006	2.2 %			3.8 %			1.8 %			4.7 %			1.3 %			2.3 %			1.0 %		
December 2005 (\$)	173.53			167.17			173.61			201.99			218.69			167.57			170.06		
\$ Change from Dec 2005	12.85			12.50			11.19			19.97			-2.63			10.19			10.88		
% Change from Dec 2005	7.4 %			7.5 %			6.4 %			9.9 %			-1.2 %			6.1 %			6.4 %		
Variation from Darwin (\$)																					
Dairy & Related Products				-0.91			-0.15			1.91			2.46			-1.28			-0.63		
Bread & Cereal Products				-0.70			0.07			2.24			7.00			-1.11			-1.02		
Meat & Seafoods				-0.47			-0.13			6.21			2.64			-1.09			0.19		
Fruit & Vegetables				-1.75			-1.93			9.76			-5.15			-2.42			-2.01		
Non-Alcoholic Drinks & Snacks				-1.13			0.14			6.01			12.89			-0.61			-0.92		
Other Food				-0.20			-0.29			2.39			2.96			-0.68			-0.52		
Household Supplies				-0.73			-0.27			3.52			3.17			-0.51			-0.22		
Pharmaceuticals				-0.02			0.33			1.16			1.51			-0.02			0.03		
Pet Foods				-0.19			0.23			0.89			0.63			-0.32			-0.03		
Personal Care Products				-0.62			0.42			1.51			1.57			-0.58			-0.30		
Total (\$)				-6.71			-1.57			35.59			29.68			-8.62			-5.44		
% Variation from Darwin				-3.6 %			-0.8 %			19.1 %			15.9 %			-4.6 %			-2.9 %		
Variation from Darwin in June 2006 (\$)				-9.25			-0.89			29.62			30.87			-8.57			-3.28		
% Variation from Darwin				-5.1 %			-0.5 %			16.2 %			16.9 %			-4.7 %			-1.8 %		
Variation from Darwin in December 2005 (\$)				-6.36			0.08			28.47			45.16			-5.96			-3.47		
% Variation from Darwin				-3.7 %			0.0 %			16.4 %			26.0 %			-3.4 %			-2.0 %		

* Calculations may not add up due to rounding.

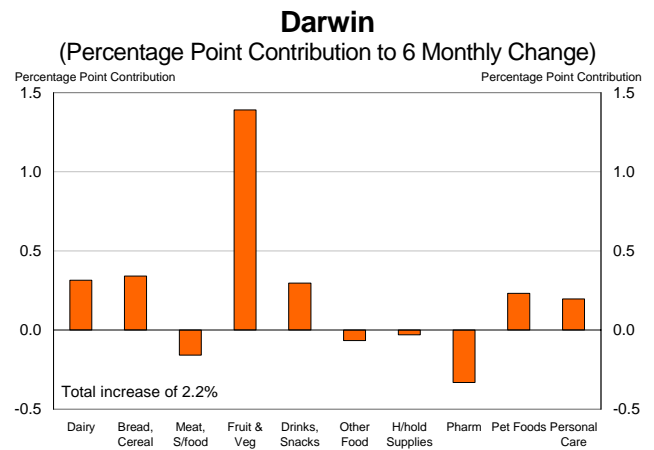
Darwin

In Darwin, the average cost of the basket in December 2006 was \$186.38, \$8.63 more expensive than in Cairns at \$177.75. Since June 2006, the cost of the basket has increased by \$3.98 (2.2%) in Darwin and by \$3.93 (2.3%) in Cairns.

Six out of the ten categories contributed to the increased cost of the basket. The largest increase occurred in the Fruit & Vegetable category, up by 7.8%, contributing 1.4 percentage points to overall prices growth in Darwin.

In Darwin, the cheapest basket was at Karama Coles, at \$184.16, and the most expensive basket was at Casuarina Bi-Lo, at \$191.39.

Since June 2000, the cost of the basket in Darwin has increased at an average annual rate of 3.0%.



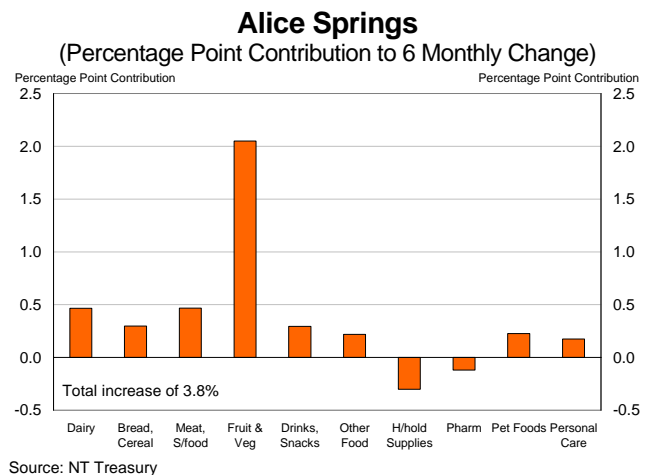
Alice Springs

The average cost of the basket in Alice Springs was \$179.67 in the latest survey, \$1.27 cheaper than in Mount Isa. Since June 2006, the cost of the basket increased by \$6.52 (3.8%) in Alice Springs compared to a \$1.83 (1.0%) increase in Mt Isa. The basket was \$6.71 (3.6%) cheaper than in Darwin, compared to \$9.25 (5.1%) cheaper in the June 2006 survey.

All categories except for Household Supplies and Pharmaceuticals contributed to the increased cost of the basket. Again, Fruit & Vegetables accounted for the majority of the increase, up by 11.9%, and contributing 2.0 percentage points to total growth.

Grocery prices in Alice Springs are generally lower than in Darwin, particularly for perishables, reflecting its proximity to southern supply centres.

Since June 2000, the cost of the basket in Alice Springs has increased at an average annual rate of 2.7%.



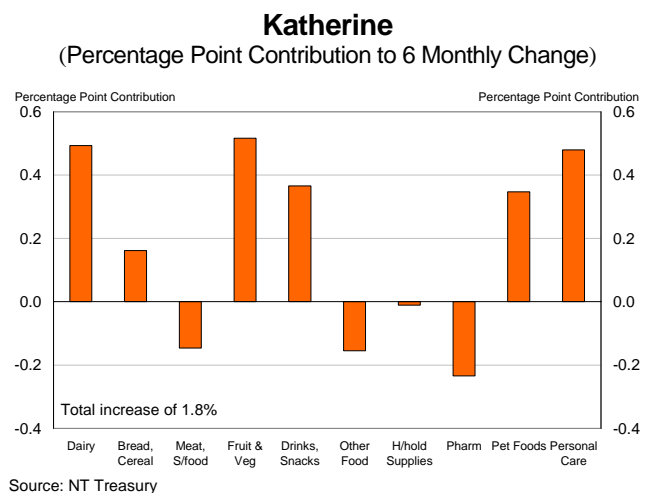
Katherine

Note: There is only one major grocery store in Katherine (Woolworths).

In Katherine, the cost of the basket increased by \$3.30 (1.8%) to \$184.80 since June 2006. The basket was \$1.57 less expensive than in Darwin.

Prices increased in six of the ten categories, with Fruit & Vegetables, Dairy & Related Products and Personal Care Products each contributing 0.5 percentage points to total growth in the basket.

In aggregate, price changes in Katherine tend to track those in Darwin. The direction and magnitude of changes within categories was also broadly consistent between Darwin and Katherine, with the exception of Fruit & Vegetables, which rose by only 2.9% in Katherine, compared to 7.8% in Darwin.



Nhulunbuy

Note: Only one major grocery store is surveyed in Nhulunbuy (Woolworths).

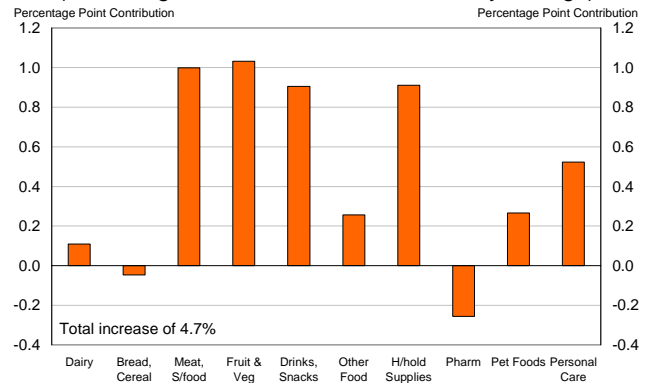
In Nhulunbuy, the cost of the basket increased by \$9.96 (4.7%) to \$221.97. Nhulunbuy replaced Yulara as the most expensive basket of the surveyed regions, \$35.59 (19.1%) more expensive than in Darwin.

Nhulunbuy recorded price increases in every category except Pharmaceuticals and Bread & Cereal Products. The largest contributors to growth were Fruit & Vegetables and Meat & Seafoods, both contributing 1.0 percentage point to overall growth in the basket. Non-Alcoholic Drinks & Snacks and Household Supplies also contributed strongly, both adding 0.9 percentage points to total growth.

In general, the cost of goods in Nhulunbuy is substantially higher than in Darwin, reflecting additional freight costs, especially for perishables and limited economies of scale and competition. Over the past two years this has been exacerbated by higher fuel prices and increased demand for freight services associated with the Alcan G3 expansion.

Nhulunbuy

(Percentage Point Contribution to 6 Monthly Change)



Source: NT Treasury

Yulara

Note: There is only one grocery store in Yulara (IGA).

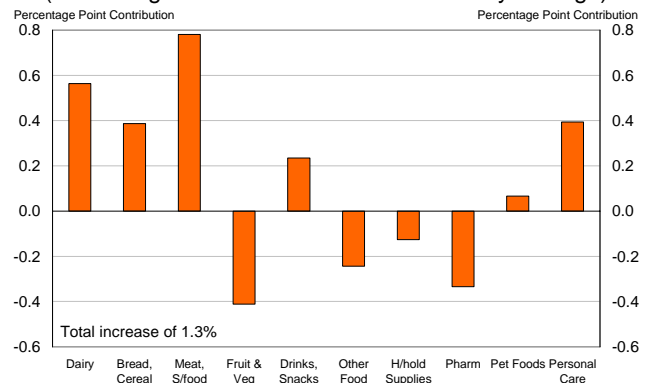
At \$216.06, Yulara has the second most expensive basket of the surveyed regions, behind Nhulunbuy. The purchase cost of the basket in Yulara has increased by \$2.79 (1.3%) since the previous survey and was \$29.68 (15.9%) more expensive than in Darwin.

Price increases were recorded in six of the ten categories, with the strongest growth in Meat & Seafoods which increased by 5.9%, adding 0.8 percentage points to overall growth in the basket. Dairy & Related Products also increased significantly, up 6.3% and added 0.6 percentage points to total growth.

Yulara IGA was introduced to the survey in June 2002 and, for similar reasons to Nhulunbuy, has significantly higher prices than in Darwin. This reflects the combination of remoteness as well as lack of competition and economies of scale.

Yulara

(Percentage Point Contribution to 6 Monthly Change)



Source: NT Treasury

Cairns

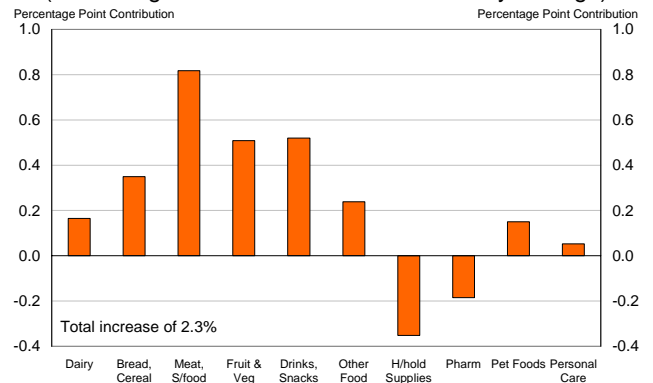
Note: Cairns prices are surveyed to provide a similar sized town to compare with Darwin.

In Cairns, the cost of the basket increased by \$3.93 (2.3%) to \$177.75 in the latest survey. As previously noted, the basket was \$8.63 cheaper in Cairns than in Darwin.

In aggregate, prices in Darwin and Cairns tend to track each other, though there can be some variation in individual categories. Cairns reported a more modest increase in Fruit & Vegetable prices than Darwin, however this was more than offset by an increase of 5.8% in Meat & Seafoods, contributing 0.8 percentage points to total growth. By contrast, the price of Meat & Seafoods fell slightly in Darwin. Other categories showed similar increases to Darwin, while Household Supplies subtracted 0.4 percentage point from total growth in the basket.

Cairns

(Percentage Point Contribution to 6 Monthly Change)



Source: NT Treasury

Mount Isa

Note: Mt Isa prices are surveyed to provide a similar sized town to compare with Alice Springs.

In December 2006, the cost of the basket in Mount Isa was \$180.94, an increase of \$1.83 (1.0%) compared to the previous survey. The cost of the basket in Mount Isa was \$1.27 (0.7%) more expensive than Alice Springs.

In Mount Isa, increases were recorded in five out of the ten categories in the basket. Meat & Seafoods made the largest contribution to total growth, adding 0.9 percentage points.

Overall Results

The results for December 2006 are in line with the general principle that people purchasing an average basket of goods at supermarkets in towns more remote from major supply centres and larger population centres face higher prices than those living closer to major centres (see middle chart). This reflects higher freight costs, which have been affected by significantly higher fuel prices recently, as well as the smaller market size and reduced competition in these centres.

Prices for Fruit & Vegetables and Meat & Seafoods (which typically make up around one-third of the cost of the basket) are highly volatile, reflecting variations in seasonal and other factors affecting supply. As such, variations in prices in these categories can have a substantial impact on the overall cost of the basket in any one survey period.

Of the stores surveyed in the Territory in the latest period, the cheapest basket was at Alice Springs Woolworths (\$177.75) and the highest cost basket was at Nhulunbuy Woolworths (\$221.97). In Darwin, the cheapest basket was at Karama Coles (\$184.16), and the most expensive basket was at Casuarina Bi-Lo (\$191.39).

Since the survey began in June 2000, Cairns has recorded the highest average annual increase in the cost to purchase the basket (see bottom chart), while Yulara reports the lowest average annual increase. Darwin's average annual increase of 3.0% is above the average across all the surveyed regions of 2.7%.

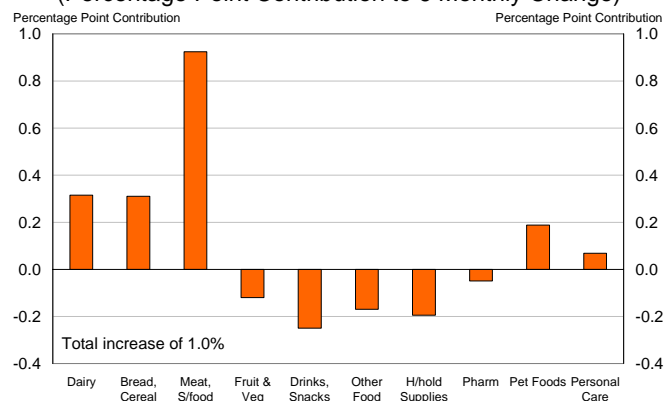
Movements in Cost of the (Series One) Basket (% change)

	Six months to Dec 2006	Year to Dec 2006	Since June 2000
Darwin	2.2	7.4	21.4
Alice Springs	3.8	7.5	19.1
Katherine	1.8	6.4	19.8
Nhulunbuy	4.7	9.9	20.6
Cairns	2.3	6.1	22.5
Mount Isa	1.0	6.4	20.6
Yulara	1.3	-1.2	7.3*

* Growth since June 2002
Source: NT Treasury

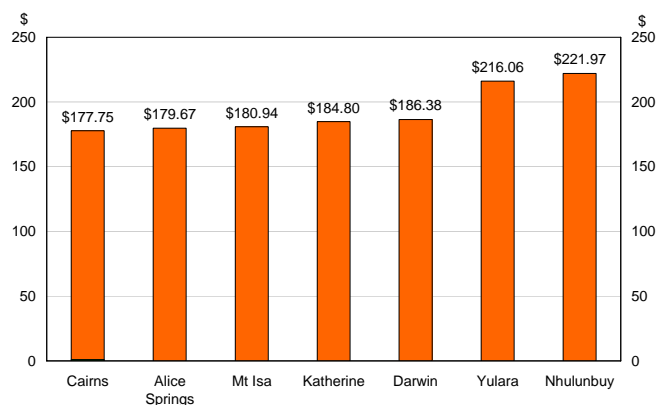
Mount Isa

(Percentage Point Contribution to 6 Monthly Change)



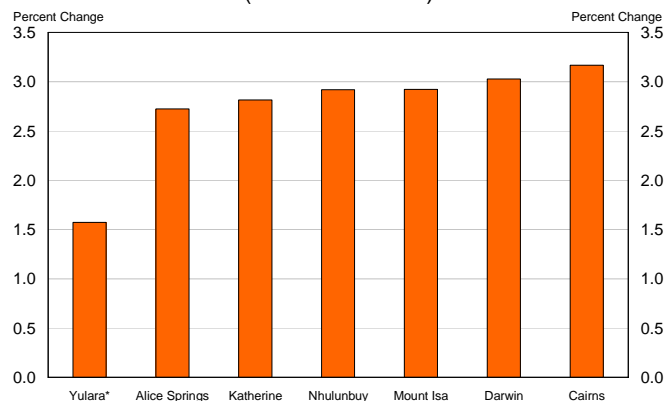
Source: NT Treasury

Cost of Grocery Basket (December 2006)



Source: NT Treasury

Compound Annual Growth Rate (since June 2000)



* For Yulara compound annual growth rate since June 2002
Source: NT Treasury

GROCERY PRICE SURVEY – SERIES TWO New Household Expenditure data released

Every five years the Australian Bureau of Statistics (ABS) releases data on household expenditure patterns. Data are available by jurisdiction and by capital city and form the basis of items and weightings used to estimate the cost of a 'standard' basket of goods in the Grocery Price Survey. In August 2005 the ABS released the *Household Expenditure Survey, 2003-04* (Cat. No. 6535.0.55.001).

In order to reflect the latest household spending patterns Treasury has updated items and weightings in the basket. Further, the introduction of the 15th series Consumer Price Index (CPI), which is also based on the Household Expenditure Survey (HES), provided a timely opportunity to review the methodology for calculating the cost of the basket. This is the first time the basket and its weightings have been reviewed and updated since the Grocery Price Survey commenced in 2000.

The review involved updating the 10 sub-groups, and 29 expenditure classes (and items within the classes) in the original survey. The rationale for examining these categories is that, to update the survey over time, there is a requirement for the items in the expenditure classes to broadly correlate with detailed quarterly CPI data which is available from the ABS.

Changes resulting from the review include:

1. the Personal Care Products expenditure class being incorporated into the Household Supplies expenditure class;
2. the Pharmaceuticals expenditure class being removed from the basket;
3. 26 items being deleted from the survey and 30 new items being introduced (the basket now has 136 items);
4. a break in the time series of data; and
5. for comparative purposes, information will be collected for the Series One and Series Two surveys until December 2006.

The substantive changes to the survey reflect modifications to the 15th series CPI and, the reality that it is not possible to accurately update expenditure on grocery store-sourced pharmaceuticals using available 15th series CPI data. This is because the Pharmaceuticals sub-group in the CPI is dominated by prescription drugs which are not dispensed at grocery stores.

In December 2006, the Series Two basket cost less than the Series One basket across all locations. The Series Two basket was 6.2% (\$10.80) cheaper, on average, than Series One. This largely reflects the removal of the Pharmaceuticals sub-group from the survey which accounts for the majority of the cost difference.

The lower cost of the Series Two basket does not reflect cheaper prices, but better reflects changes in household expenditure patterns. Of interest, compared to the 1998-99 Household Expenditure Survey, the 2003-04 Survey reports that households are spending less on grocery items as a proportion of total expenditure.

Broad Comparison of Series One and Series Two Baskets across Territory Centres

As anticipated, the introduction of the Series Two survey in December 2005 has not impacted on the cost ranking (least to most expensive) of the surveyed centres.

Nonetheless, by individual grocery store there were some changes in rankings from Series One to the Series Two basket. For example, Alice Springs Woolworths went from being ranked third cheapest in the Series One basket to the second cheapest in the Series Two basket (see tables on page 7).

In addition, the pattern of cost variations from Darwin was broadly consistent across both surveys (see tables on page 8).

For further information on the survey methodology and changes introduced in the latest survey see technical paper December 2005, available at:

http://www.nt.gov.au/nt/economics/econ_nt_gpsurvey.shtml

Grocery Price Survey – December 2006

Cost of (Series One) Basket by Location and by Store*

Supermarkets	Dec-2006		Jun-2006		Dec-2005		Jun-2005		2 year average	
	\$	Rank	\$	Rank	\$	Rank	\$	Rank	\$	Rank
Cairns Action Stocklands	174.36	1	169.72	1	166.03	2	171.34	16	170.36	4
Cairns Bi-Lo Central	177.61	2	169.84	2	167.05	4	162.30	1	169.20	1
Alice Springs Woolworths	177.75	3	172.22	4	166.84	3	162.63	2	169.86	2
Cairns Coles Central	178.73	4	178.16	8	168.79	7	165.15	5	172.71	6
Mount Isa Coles	179.25	5	177.64	7	168.66	6	166.74	7	173.07	7
Cairns Woolworths Stocklands	180.32	6	177.55	6	168.40	5	166.54	6	173.20	8
Alice Springs Coles	180.62	7	175.49	5	169.28	8	164.65	4	172.51	5
Alice Springs Bi-Lo	180.65	8	171.73	3	165.39	1	163.64	3	170.35	3
Mount Isa Woolworths	182.63	9	180.58	12	171.47	10	166.79	8	175.37	9
Darwin Coles Karama	184.16	10	183.66	21	174.46	21	172.01	20	178.57	20
Darwin Woolworths Hibiscus	184.16	11	179.95	10	174.95	22	170.65	12	177.43	12
Darwin Coles Northlakes (formerly Bi-Lo)	184.35	12	183.28	19	172.32	11	171.35	17	177.83	14
Katherine Woolworths	184.80	13	181.51	16	173.61	18	171.80	19	177.93	15
Darwin Woolworths Nightcliff	185.17	14	180.93	13	172.40	12	170.69	13	177.30	11
Darwin Woolworths Casuarina	185.39	15	183.31	20	172.48	13	169.57	9	177.69	13
Darwin Woolworths Humpty Doo	185.41	16	178.24	9	173.83	19	170.21	11	176.92	10
Darwin Coles City	186.21	17	186.22	23	173.57	17	173.21	24	179.81	22
Darwin Woolworths Cavenagh St	186.35	18	186.68	24	175.60	23	172.88	23	180.38	23
Darwin Woolworths Coolalinga	187.19	19	181.34	15	173.47	16	171.00	15	178.25	18
Darwin Coles Palmerston	187.36	20	181.59	17	172.81	15	172.29	21	178.51	19
Darwin Coles Casuarina	187.86	21	182.72	18	172.54	14	172.78	22	178.98	21
Darwin Woolworths Palmerston	187.88	22	180.93	14	174.08	20	169.77	10	178.17	16
Darwin Bi-Lo Casuarina	191.39	23	180.24	11	170.26	9	170.98	14	178.22	17
Yulara IGA	216.06	24	213.27	26	218.69	26	203.19	25	212.80	25
Nhulunbuy Woolworths	221.97	25	212.01	25	201.99	25	203.90	26	209.97	24
Darwin Woolworths Knuckey St	n.a.	n.a.	184.40	22	176.65	24	171.35	17	n.a.	n.a.

Cost of (Series Two) Basket by Location and by Store*

Supermarkets	Dec-2006		Jun-2006		Jun-2005		Dec-2004		2 year average	
	\$	Rank	\$	Rank	\$	Rank	\$	Rank	\$	Rank
Cairns Action Stocklands	162.61	1	159.68	2	156.54	4	n.a.	n.a.	n.a.	n.a.
Alice Springs Woolworths	167.31	2	161.37	4	154.78	2	n.a.	n.a.	n.a.	n.a.
Mount Isa Coles	167.42	3	166.00	7	156.66	5	n.a.	n.a.	n.a.	n.a.
Cairns Coles Central	167.60	4	166.53	9	156.86	6	n.a.	n.a.	n.a.	n.a.
Cairns Bi-Lo Central	167.95	5	159.99	3	154.96	3	n.a.	n.a.	n.a.	n.a.
Cairns Woolworths Stocklands	169.15	6	166.34	8	156.93	7	n.a.	n.a.	n.a.	n.a.
Alice Springs Coles	169.25	7	162.84	5	157.00	8	n.a.	n.a.	n.a.	n.a.
Alice Springs Bi-Lo	170.48	8	157.84	1	153.02	1	n.a.	n.a.	n.a.	n.a.
Mount Isa Woolworths	171.69	9	169.47	18	158.91	9	n.a.	n.a.	n.a.	n.a.
Darwin Woolworths Hibiscus	172.47	10	167.09	10	163.14	22	n.a.	n.a.	n.a.	n.a.
Darwin Woolworths Casuarina	173.61	11	170.77	20	160.89	12	n.a.	n.a.	n.a.	n.a.
Darwin Woolworths Humpty Doo	173.87	12	165.87	6	162.17	19	n.a.	n.a.	n.a.	n.a.
Darwin Coles Northlakes	174.20	13	170.34	19	159.97	11	n.a.	n.a.	n.a.	n.a.
Katherine Woolworths	174.21	14	169.25	17	162.47	20	n.a.	n.a.	n.a.	n.a.
Darwin Woolworths Nightcliff	174.91	15	168.69	13	161.10	13	n.a.	n.a.	n.a.	n.a.
Darwin Coles City	175.44	16	174.39	24	161.37	14	n.a.	n.a.	n.a.	n.a.
Darwin Woolworths Cavenagh St	175.71	17	173.51	22	164.44	23	n.a.	n.a.	n.a.	n.a.
Darwin Woolworths Coolalinga	175.88	18	169.01	14	161.63	17	n.a.	n.a.	n.a.	n.a.
Darwin Coles Karama	176.04	19	171.70	21	161.80	18	n.a.	n.a.	n.a.	n.a.
Darwin Coles Casuarina	176.59	20	169.15	15	161.58	15	n.a.	n.a.	n.a.	n.a.
Darwin Woolworths Palmerston	176.64	21	168.66	12	163.08	21	n.a.	n.a.	n.a.	n.a.
Darwin Coles Palmerston	177.12	22	168.20	11	161.59	16	n.a.	n.a.	n.a.	n.a.
Darwin Bi-Lo Casuarina	179.06	23	169.16	16	159.20	10	n.a.	n.a.	n.a.	n.a.
Yulara IGA	208.45	24	205.26	26	204.04	26	n.a.	n.a.	n.a.	n.a.
Nhulunbuy Woolworths	210.05	25	202.85	25	189.69	25	n.a.	n.a.	n.a.	n.a.
Darwin Woolworths Knuckey St	n.a.	n.a.	173.62	23	164.97	24	n.a.	n.a.	n.a.	n.a.

*Expenditures figures adjusted to reflect CPI estimates for each previous period.
Source: NT Treasury

Grocery Price Survey – December 2006

Cost of (Series One) Grocery Basket – December 2006

Expenditure (\$)	Alice						
	Darwin	Springs	Katherine	Nhulunbuy	Yulara	Cairns	Mount Isa
Dairy & Related Products	17.71	16.81	17.57	19.63	20.17	16.44	17.08
Bread & Cereal Products	19.18	18.49	19.25	21.42	26.18	18.07	18.16
Meat & Seafoods	27.14	26.66	27.01	33.35	29.78	26.05	27.32
Fruit & Vegetables	35.22	33.47	33.29	44.97	30.06	32.80	33.21
Non-Alcoholic Drinks & Snacks	27.39	26.26	27.53	33.39	40.27	26.78	26.47
Other Food	17.09	16.90	16.81	19.48	20.06	16.41	16.57
Household Supplies	17.14	16.41	16.87	20.66	20.31	16.63	16.91
Pharmaceuticals	8.39	8.37	8.72	9.55	9.90	8.37	8.42
Pet Foods	5.35	5.16	5.58	6.24	5.99	5.03	5.33
Personal Care Products	11.76	11.15	12.18	13.27	13.34	11.18	11.47
Total	186.38	179.67	184.80	221.97	216.06	177.75	180.94

Variation from Darwin (\$)

Dairy and Related Products	-0.91	-0.15	1.91	2.46	-1.28	-0.63
Bread and Cereal Products	-0.70	0.07	2.24	7.00	-1.11	-1.02
Meat & Seafoods	-0.47	-0.13	6.21	2.64	-1.09	0.19
Fruit & Vegetables	-1.75	-1.93	9.76	-5.15	-2.42	-2.01
Non-Alcoholic Drinks and Snacks	-1.13	0.14	6.01	12.89	-0.61	-0.92
Other Food	-0.20	-0.29	2.39	2.96	-0.68	-0.52
Household Supplies	-0.73	-0.27	3.52	3.17	-0.51	-0.22
Pharmaceuticals	-0.02	0.33	1.16	1.51	-0.02	0.03
Pet Foods	-0.19	0.23	0.89	0.63	-0.32	-0.03
Personal Care Products	-0.62	0.42	1.51	1.57	-0.58	-0.30
Total	-6.71	-1.57	35.59	29.68	-8.62	-5.44
% Variation from Darwin	-3.60 %	-0.84 %	19.10 %	15.93 %	-4.63 %	-2.92 %

* may not add due to rounding
Source: NT Treasury

Cost of (Series Two) Grocery Basket – December 2006

Expenditure (\$)	Alice						
	Darwin	Springs	Katherine	Nhulunbuy	Yulara	Cairns	Mount Isa
Dairy & Related Products	15.52	14.77	15.34	18.28	18.24	14.11	14.63
Bread & Cereal Products	19.02	18.15	19.06	21.32	25.79	17.97	18.01
Meat & Seafoods	27.90	27.50	27.93	33.53	33.19	33.53	27.33
Fruit & Vegetables	34.00	32.13	32.20	43.40	29.79	43.40	32.01
Non-Alcoholic Drinks & Snacks	25.54	24.52	25.93	31.02	37.08	31.02	24.91
Other Food	18.93	18.49	19.00	21.98	22.67	21.98	18.46
Household Supplies	29.08	28.14	29.00	34.10	35.52	34.10	28.73
Pet Foods	5.51	5.31	5.74	6.42	6.16	6.42	5.48
Total	175.50	169.01	174.21	210.05	208.45	166.83	169.56

Variation from Darwin (\$)

Dairy & Related Products	-0.74	-0.17	2.76	2.73	-1.41	-0.89
Bread & Cereal Products	-0.88	0.04	2.30	6.77	-1.05	-1.01
Meat & Seafoods	-0.40	0.03	5.63	5.29	5.63	-0.57
Fruit & Vegetables	-1.87	-1.81	9.40	-4.21	9.40	-1.99
Non-Alcoholic Drinks & Snacks	-1.03	0.39	5.48	11.54	5.48	-0.63
Other Food	-0.44	0.07	3.05	3.74	3.05	-0.47
Household Supplies	-0.94	-0.08	5.02	6.44	5.02	-0.35
Pet Foods	-0.20	0.24	0.91	0.65	0.91	-0.03
Total	-6.49	-1.29	34.55	32.95	-8.68	-5.94
% Variation from Darwin	-3.7 %	-0.7 %	19.7 %	18.8 %	-4.9 %	-3.4 %

* may not add due to rounding
Source: NT Treasury