

Grocery Price Survey

December 2005

Introduction of Series Two

For the first time since the Grocery Price Survey (GPS) began in 2000, NT Treasury has reviewed and updated items and weightings in the survey basket. The GPS measures the cost of purchasing an average basket of goods at 26 supermarkets across both the Northern Territory and, for comparative purposes, Northern Queensland. The review has resulted in the survey being updated, which allows the basket to remain consistent with changing consumer expenditure patterns. This has necessitated a break in the series, and as a result, in December 2005 NT Treasury has undertaken two surveys referred to as 'Series One' and 'Series Two' (Series Two will eventually replace Series One). Additional details are provided on pages 6 to 8. For the purpose of analysing price movements over time and due to the limited data collected for Series Two, the following brief primarily reports on the results of the GPS Series One basket.

Moderate price increases across most regions

The December 2005 Grocery Price Survey reports moderate price growth in most surveyed regions, broadly consistent with movements in the 'food' category of the Darwin Consumer Price Index (CPI), as compiled by the ABS. The exceptions were Nhulunbuy where prices fell and Yulara, where prices increased sharply following an unusually low result in the June 2005 survey.

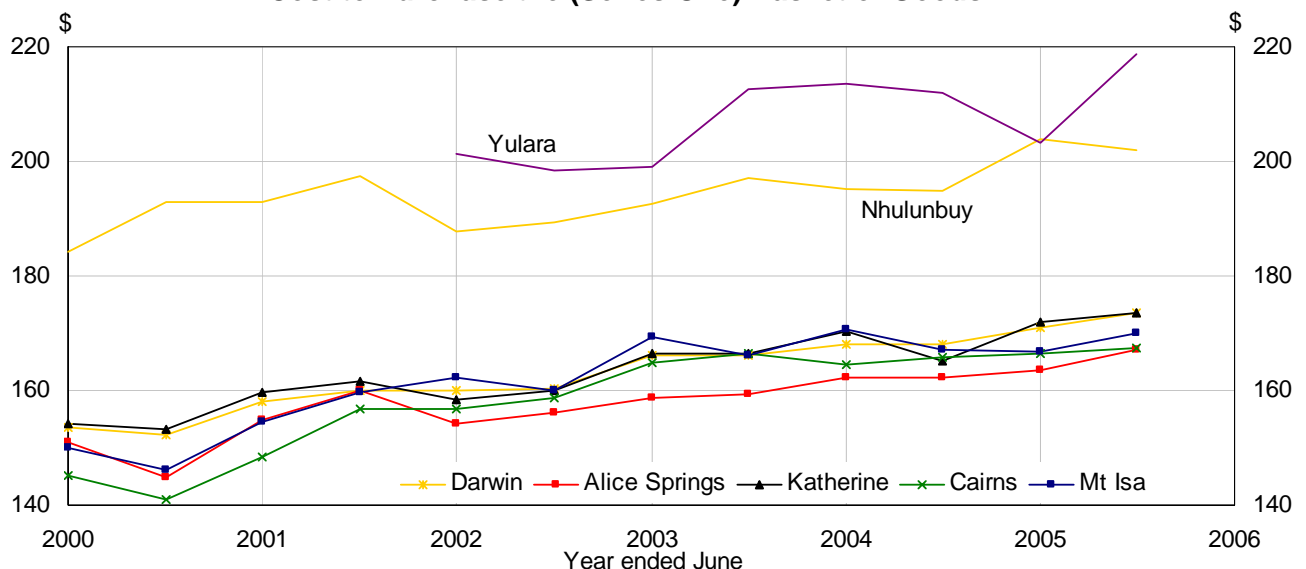
In Darwin, the cost of the basket of goods increased by 1.4% in the six months since the last survey. In other regions the cost of the basket increased by 2.2% in Alice Springs, by 1.1% in Katherine, by 7.6% in Yulara, by 0.7% in Cairns and by 2.0% in Mt Isa, but fell by 0.9% in Nhulunbuy. The 'food' component of Darwin's CPI – which, by including 'meals out and take away foods', uses a broader 'basket' than the Grocery Price Survey - increased by 2.0% over the same period. Alice Springs continues to record the lowest cost basket of the Territory centres surveyed, followed by Darwin, Katherine, Nhulunbuy and Yulara.

Fruit and vegetables major contributor to growth

The Fruit & Vegetables category accounted for more than two-thirds of the increase in Darwin and, except for in Katherine and Nhulunbuy, was a major contributor to the increased cost of the basket (see Table 1 on page 2). Large price variations in the Fruit & Vegetables category are common, reflecting a range of seasonal and other factors that can affect supply. In Darwin, Bread & Cereal and Pet Foods were also major contributors to the higher cost of the basket. The cost of the Bread & Cereal Products and Non-Alcoholic Drinks & Snacks component of the basket increased across all regions in the period and, Pharmaceuticals prices fell across all regions after increasing sharply in the previous survey.

Compared to December 2004, the cost of the basket in Darwin increased by 3.2%, by 5.1% in Katherine, by 3.6% in Nhulunbuy, by 3.2% in Yulara, by 3.0% in Alice Springs, by 1.7% in Mount Isa and by 1.1% in Cairns.

Cost to Purchase the (Series One) Basket of Goods



Source: NT Treasury



Grocery Price Survey - December 2005[#]

Expenditure Category	Darwin			Alice Springs			Katherine			Nhulunbuy			Yulara			Cairns			Mount Isa		
	Expenditure (\$)	6 mth % Change	Ppt contrib to Change	Expenditure (\$)	6 mth % Change	Ppt contrib to Change	Expenditure (\$)	6 mth % Change	Ppt contrib to Change	Expenditure (\$)	6 mth % Change	Ppt contrib to Change	Expenditure (\$)	6 mth % Change	Ppt contrib to Change	Expenditure (\$)	6 mth % Change	Ppt contrib to Change	Expenditure (\$)	6 mth % Change	Ppt contrib to Change
Dairy & Related Products	16.81	1.5	0.1	15.99	1.2	0.1	16.65	4.8	0.4	20.81	2.6	0.3	19.58	6.1	0.6	16.04	-0.6	-0.1	15.97	-0.2	0.0
Bread & Cereal Products	18.26	2.2	0.2	18.00	5.7	0.6	18.40	6.8	0.7	23.83	7.6	0.8	24.75	3.8	0.5	17.61	1.2	0.1	18.11	2.5	0.3
Meat & Seafoods	26.66	0.0	0.0	25.94	-0.3	0.0	26.38	-0.3	-0.1	31.11	-2.2	-0.3	37.16	21.2	3.2	25.25	0.0	0.0	26.52	1.8	0.3
Fruit & Vegetables	28.06	6.4	1.0	26.43	9.0	1.3	27.15	-2.0	-0.3	34.13	-8.3	-1.5	28.96	17.3	2.1	26.81	4.6	0.7	26.55	7.9	1.2
Non-Alcoholic Drinks & Snacks	25.80	0.8	0.1	24.98	1.9	0.3	26.83	4.0	0.6	28.68	3.7	0.5	39.43	11.6	2.0	25.76	2.4	0.4	25.91	2.8	0.4
Other Food	16.64	0.4	0.0	15.73	-1.1	-0.1	16.77	-2.0	-0.2	18.76	-1.6	-0.1	20.45	3.1	0.3	15.59	0.2	0.0	15.94	2.0	0.2
Household Supplies	16.79	0.8	0.1	16.24	1.1	0.1	16.97	-1.1	-0.1	17.87	-3.1	-0.3	20.87	-2.8	-0.3	16.65	0.5	0.1	16.67	-1.3	-0.1
Pharmaceuticals	8.11	-6.9	-0.4	7.92	-7.3	-0.4	8.07	-3.6	-0.2	8.66	-10.6	-0.5	9.35	-8.0	-0.4	7.70	-10.3	-0.5	8.19	-7.4	-0.4
Pet Foods	4.85	6.4	0.2	4.79	11.6	0.3	4.70	2.2	0.1	5.44	5.3	0.1	4.97	-10.1	-0.3	4.79	10.0	0.3	4.88	10.2	0.3
Personal Care Products	11.54	0.1	0.0	11.15	-0.5	0.0	11.69	1.8	0.1	12.69	2.6	0.2	13.17	-0.6	0.0	11.37	-2.6	-0.2	11.31	-1.1	-0.1
Total (\$)	173.53	1.4	1.4	167.17	2.2	2.2	173.61	1.1	1.1	201.99	-0.9	-0.9	218.69	7.6	7.6	167.57	0.7	0.7	170.06	2.0	2.0
June 2005 (\$)*	171.09			163.64			171.80			203.90			203.19			166.33			166.76		
\$ Change from previous period	2.43			3.53			1.81			-1.90			15.50			1.24			3.30		
% Change from previous period	1.42 %			2.16 %			1.05 %			-0.93 %			7.63 %			0.74 %			1.98 %		
December 2004(\$)	168.17			162.28			165.21			194.99			212.00			165.71			167.16		
\$ Change from December 2004	5.36			4.89			8.40			7.00			6.69			1.86			2.90		
% Change from December 2004	3.19 %			3.01 %			5.08 %			3.59 %			3.15 %			1.12 %			1.73 %		
Variation from Darwin (\$)																					
Dairy & Related Products				-0.82			-0.16			4.00			2.77			-0.76			-0.84		
Bread & Cereal Products				-0.26			0.14			5.57			6.49			-0.66			-0.16		
Meat & Seafoods				-0.73			-0.29			4.45			10.50			-1.41			-0.14		
Fruit & Vegetables				-1.63			-0.91			6.08			0.91			-1.25			-1.50		
Non-Alcoholic Drinks & Snacks				-0.83			1.03			2.88			13.62			-0.05			0.11		
Other Food				-0.91			0.13			2.12			3.80			-1.06			-0.70		
Household Supplies				-0.55			0.18			1.08			4.08			-0.14			-0.12		
Pharmaceuticals				-0.19			-0.04			0.55			1.23			-0.42			0.08		
Pet Foods				-0.06			-0.14			0.60			0.12			-0.05			0.03		
Personal Care Products				-0.39			0.15			1.16			1.64			-0.16			-0.22		
Total (\$)				-6.36			0.08			28.47			45.16			-5.96			-3.47		
% Variation from Darwin				-3.66 %			0.05 %			16.40 %			26.02 %			-3.44 %			-2.00 %		
Variation from Darwin in June 2005 (\$)*				-7.45			0.71			32.80			32.10			-4.76			-4.33		
Net \$ change in relation to Darwin				1.10			-0.62			-4.34			13.06			-1.20			0.87		
% Variation from Darwin				-4.36 %			0.41 %			19.17 %			18.76 %			-2.78 %			-2.53 %		
Variation from Darwin in December 2004 (\$)*				-5.89			-2.96			26.82			43.83			-2.46			-1.01		
Net \$ change in relation to Darwin				-0.47			3.04			1.64			1.33			-3.50			-2.46		
% Variation from Darwin				-3.50 %			-1.76 %			15.95 %			26.07 %			-1.46 %			-0.60 %		

Calculations may not add up due to rounding.

* Adjusted to reflect changes in CPI

Darwin

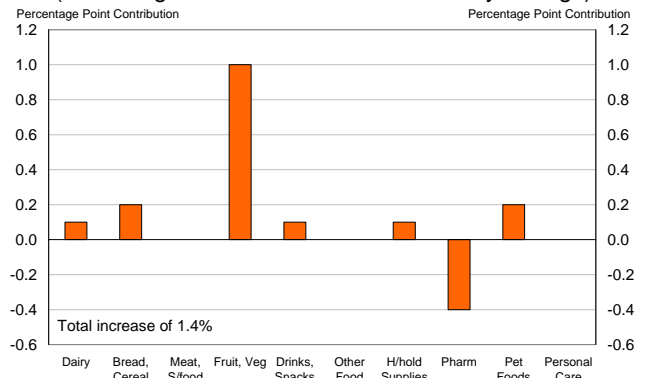
In Darwin, the average cost of the December 2005 basket was \$173.53, \$5.96 more expensive than in Cairns. Since June 2005, the cost of the basket has increased by \$2.43 (1.4%) in Darwin and by \$1.24 (0.7%) in Cairns.

Except for Pharmaceuticals, all categories contributed to the increased cost of the basket in the latest survey. The Fruit & Vegetable category increased by 6.4% and, at 1.0 percentage point, made the largest contribution to growth in the period. Bread & Cereal and Pet Food products each contributed 0.2 percentage points. Reflecting seasonal patterns in the consumer price index, prices in the Pharmaceuticals category fell by 6.9%, subtracting 0.4 percentage points from growth.

In Darwin, the cheapest basket was at Bi-Lo Casuarina, at \$170.26, and the most expensive basket was at Woolworths on Knuckey Street, at \$176.65.

Since June 2000, the cost of the basket in Darwin has increased at an average annual rate of 2.2%.

Darwin
(Percentage Point Contribution to 6 Monthly Change)



Source: NT Treasury

Alice Springs

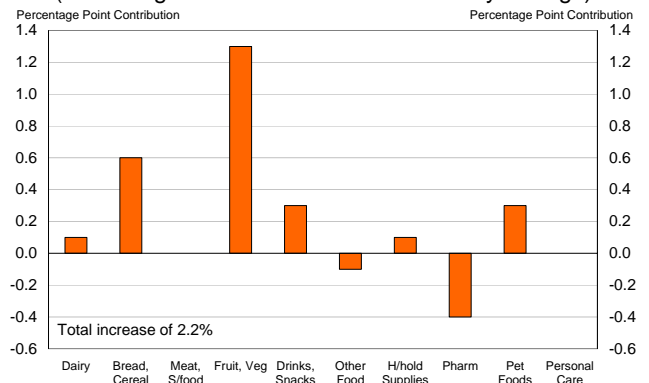
The average cost of the basket in Alice Springs was \$167.17 in the latest survey, \$2.89 (1.7%) cheaper than in Mt Isa. Since June 2005, the cost of the basket increased \$3.53 (2.2%) compared to \$3.30 (2.0%) in Mt Isa. The basket was \$6.36 (3.7%) cheaper than in Darwin, compared to \$7.45 (4.4%) cheaper in the June survey.

Six out of the ten categories contributed to the increased cost of the basket in the latest survey. At 1.3 percentage points, Fruit & Vegetables made the largest contribution to growth, while the Pharmaceuticals category reported a fall of 7.3%, subtracting 0.4 percentage points from growth in the period.

Grocery prices in Alice Springs are generally lower than in Darwin, particularly for perishables, reflecting its proximity to southern supply centres.

Since June 2000, the cost of the basket in Alice Springs has increased at an average annual rate of 1.9%.

Alice Springs
(Percentage Point Contribution to 6 Monthly Change)



Source: NT Treasury

Katherine

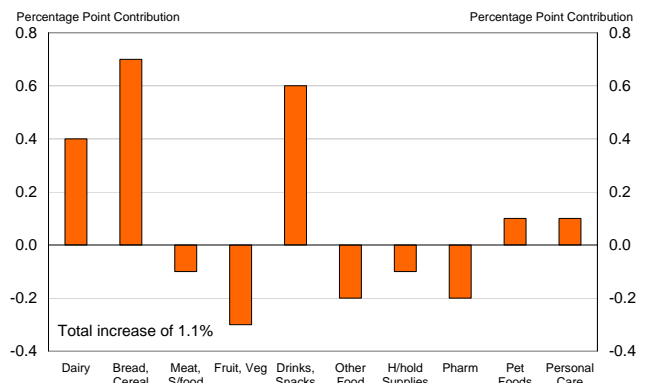
Note: There is only one major grocery store in Katherine (Woolworths).

In Katherine, the cost of the basket increased by \$1.81 (1.1%) to \$173.61, marginally more expensive than in Darwin.

Bread & Cereal Products, Non-Alcoholic Drinks & Snacks and Dairy & Related Products made the largest contributions to growth in December 2005, while Fruit & Vegetables, Pharmaceuticals and Other Foods reported the largest falls.

In aggregate, price changes in Katherine tend to track Darwin's, though variability between the two regions in price movements of category items occurs. This was the case in the latest survey, where only half of the categories experienced movements of a similar sign and/or magnitude (see charts), possibly reflecting market specific characteristics.

Katherine
(Percentage Point Contribution to 6 Monthly Change)



Source: NT Treasury

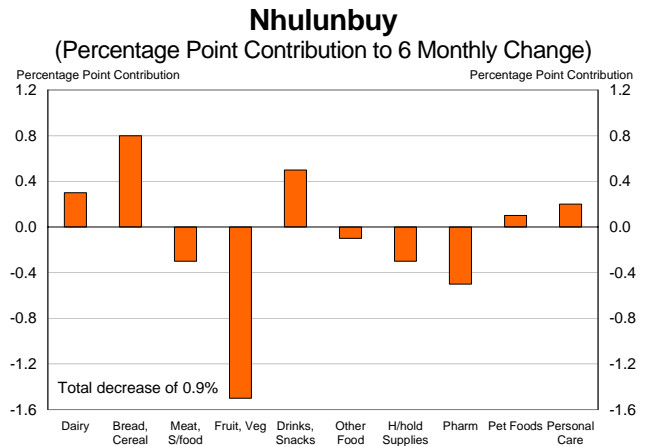
Nhulunbuy

Note: Only one major grocery store is surveyed in Nhulunbuy (Woolworths).

Nhulunbuy was the only location to record a decrease in the cost of the basket, down by \$1.90 (0.9%) to \$201.99. Despite this, it was the second most expensive basket of the surveyed regions, and \$28.46 (16.4%) more expensive than in Darwin.

The largest contributor to the lower cost of the basket was the 8.3% fall in the cost of Fruit & Vegetables which subtracted 1.5 percentage points from growth. Pharmaceuticals, Household Supplies, Meat & Seafoods and the Other Food categories also declined, while the remaining five categories reported increases.

In general, the cost of goods in Nhulunbuy is substantially higher than in Darwin, reflecting additional freight costs, especially for perishables and limited economies of scale and competition. Over the past year this has been exacerbated by higher fuel prices and increased demand for freight services associated with the Alcan G3 expansion.



Source: NT Treasury

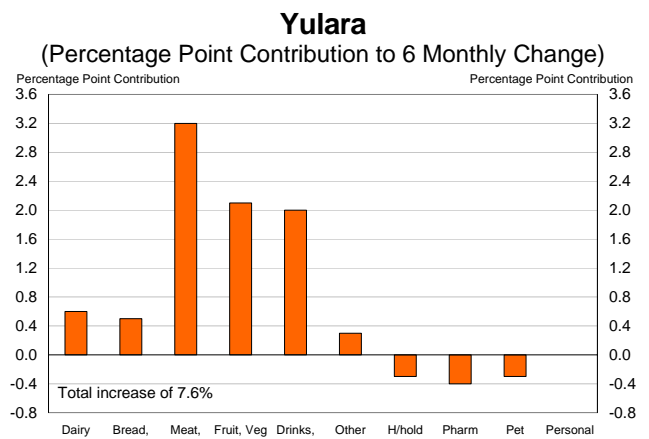
Yulara

Note: There is only one grocery store in Yulara (IGA).

The latest survey reports that, at \$218.69, Yulara has the most expensive basket of the surveyed regions. The purchase cost of the basket in Yulara has increased by \$15.50 (7.6%) since the previous survey and was \$45.16 (26.0%) more expensive than in Darwin. The large increase in the latest survey is in part due to the unusually low prices recorded in the previous period.

Meat & Seafoods, Fruit & Vegetables and Non-Alcoholic Drinks & Snacks all made significant contributions to growth in costs (see chart).

Yulara IGA was introduced to the survey in June 2002 and, for similar reasons to Nhulunbuy, has significantly higher prices than in Darwin. This reflects the combination of remoteness as well as lack of competition and economies of scale.



Source: NT Treasury

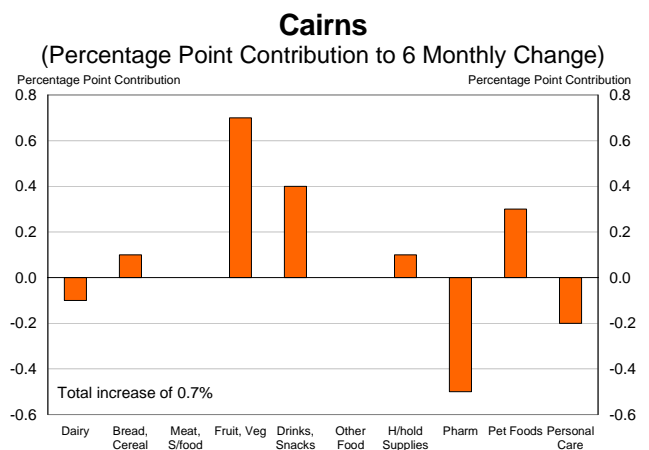
Cairns

Note: Cairns prices are surveyed to provide a similar sized town to compare with Darwin.

In Cairns, the cost of the basket increased by \$1.24 (0.7%) to \$167.57 in the latest survey, following an increase of \$0.62 (0.4%) in the June survey. As previously noted, the basket was \$5.96 cheaper in Cairns than in Darwin.

In aggregate, prices in Darwin and Cairns tend to track each other, though there can be some variation in the categories. In the latest survey there was a high degree of commonality between Darwin and Cairns in the price changes of the categories. For example, in Cairns Fruit & Vegetables made the largest contribution to growth (0.7 percentage points), followed by Non-Alcoholic Drinks & Snacks and the Pet Foods categories (see chart opposite). Pharmaceuticals, Personal Care Products and Dairy & Related Products reported a decline since in the survey period.

In the latest survey prices fell in three of the ten categories in Cairns compared to one in Darwin.



Source: NT Treasury

Mount Isa

Note: Mt Isa prices are surveyed to provide a similar sized town to compare with Alice Springs.

In December 2005, the cost of the basket in Mount Isa was \$170.06, an increase of \$3.30 (2.0%) compared to the previous survey. This followed a decrease of \$0.40 (0.2%) in June 2005. The cost of the basket in Mount Isa was \$2.89 (1.7%) more expensive than Alice Springs.

Similar to most regions in the latest survey, the Fruit & Vegetables category was the major contributor to the increased cost of the basket, increasing by 7.9% and contributing 1.2 percentage points to growth in the period. In line with all other surveyed regions, the cost of the Pharmaceuticals category declined in the period, falling by 7.4% in Mount Isa and subtracting 0.4 percentage points from growth.

In Alice Springs and Mt Isa, prices fell in four of the ten categories that make up the basket.

Overall Results

The results for December 2005 are in line with the general principle that people purchasing an average basket of goods at supermarkets in towns more remote from major supply centres and larger population centres face higher prices than those living closer to major centres (see middle chart). This reflects higher freight costs, which have been affected by significantly higher fuel prices recently, as well as the smaller market size and reduced competition in these centres.

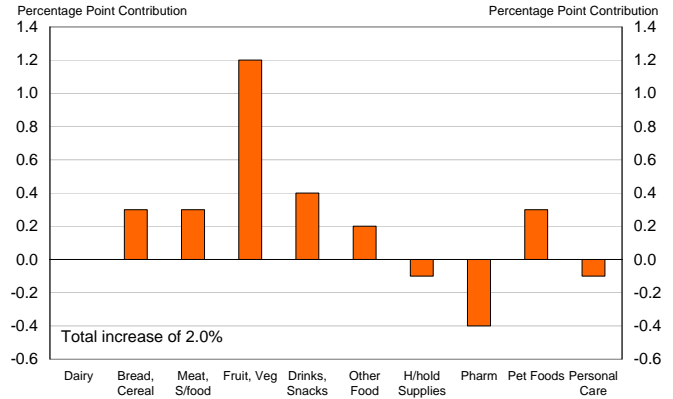
Prices for Fruit & Vegetables and Meat & Seafoods (which typically make up around one-third of the cost of the basket) are highly volatile, reflecting variations in seasonal and other factors affecting supply. As such, variations in prices in these categories can have a substantial impact on the overall cost of the basket in any one survey period.

Of the 26 stores surveyed in the latest period, the cheapest basket was at Alice Springs Bi-Lo (\$165.39) and, at \$218.69, the highest cost basket was at Yulara IGA. In Darwin, the cheapest basket was at Casuarina Bi-Lo (\$170.26), and the most expensive basket was at Knuckey Street Woolworths (\$176.65).

Since the survey began in June 2000, Cairns has recorded the highest average annual increase in the cost to purchase the basket (see bottom chart), while Nhulunbuy reports the lowest average annual increase. Darwin's average annual increase of 2.2% equalled the average across all the surveyed regions.

Mount Isa

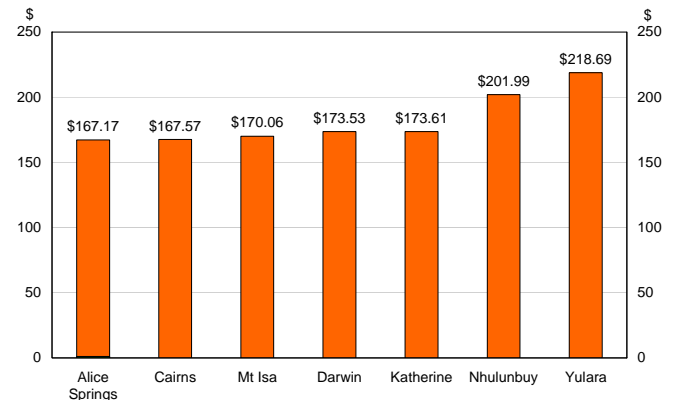
(Percentage Point Contribution to 6 Monthly Change)



Source: NT Treasury

Cost of Grocery Basket

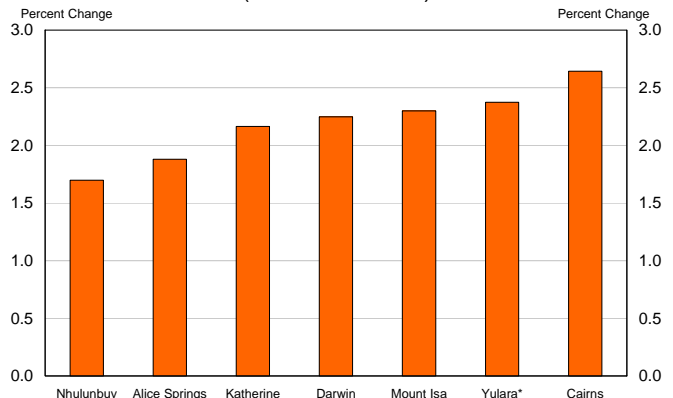
(December 2005)



Source: NT Treasury

Compound Annual Growth Rate

(since June 2000)



* For Yulara compound annual growth rate since June 2002
Source: NT Treasury

Movements in Cost of the (Series One) Basket

(% change)

	Six months to Year to Dec		Since June
	Dec 2005	2005	2000
Darwin	1.4	3.2	13.0
Alice Springs	2.2	3.0	10.8
Katherine	1.1	5.1	12.5
Nhulunbuy	-0.9	3.6	9.7
Cairns	0.7	1.1	15.5
Mount Isa	2.0	1.7	13.3
Yulara	7.6	3.2	8.6 *

* Growth since June 2002
Source: NT Treasury

GROCERY PRICE SURVEY – SERIES TWO New Household Expenditure data released

Every five years the Australian Bureau of Statistics (ABS) releases data on household expenditure patterns. Data are available by jurisdiction and by capital city and form the basis of items and weightings used to estimate the cost of a 'standard' basket of goods in the Grocery Price Survey. In August 2005 the ABS released the *Household Expenditure Survey, 2003-04* (Cat. No. 6535.0.55.001).

In order to reflect the latest household spending patterns Treasury has updated items and weightings in the basket. Further, the introduction of the 15th series consumer price index (CPI), which is also based on the household expenditure survey (HES), provided a timely opportunity to review the methodology for calculating the cost of the basket. This is the first time the basket and its weightings have been reviewed and updated since the Grocery Price Survey commenced in 2000.

The review involved updating the 10 sub-groups, and 29 expenditure classes (and items within the classes) in the original survey. The rationale for examining these categories is that, to update the survey over time, there is a requirement for the items in the expenditure classes to broadly correlate with detailed quarterly CPI data which is available from the ABS.

Changes resulting from the review include:

1. the Personal Care Products expenditure class being incorporated into the Household Supplies expenditure class;
2. the Pharmaceuticals expenditure class being removed from the basket;
3. 26 items being deleted from the survey and 30 new items being introduced (the basket now has 136 items);
4. a break in the time series of data; and
5. for comparative purposes, information will be collected for the Series One and Series Two surveys until December 2006.

The substantive changes to the survey reflect modifications to the 15th series CPI and, the reality that it is not possible to accurately update expenditure on grocery store-sourced pharmaceuticals using available 15th series CPI data. This is because the Pharmaceuticals sub-group in the CPI is dominated by prescription drugs which are not dispensed at grocery stores.

In December 2005, the Series Two basket cost less than the Series One basket across all locations. The Series Two basket was 6.7% (\$12.20) cheaper, on average, than Series One. This largely reflects the removal of the Pharmaceuticals sub-group from the survey and accounts for majority of the cost difference.

The lower cost of the Series Two basket does not reflect cheaper prices, but better reflects changes in household expenditure patterns. Of interest, compared to the 1998-99 Household Expenditure Survey, the 2003-04 Survey reports that households are spending less on grocery items as a proportion of total expenditure.

Broad Comparison of Series One and Series Two Baskets across Territory Centres

As anticipated, the introduction of the Series Two survey in December 2005 has not impacted on the cost ranking (least to most expensive) of the surveyed centres.

Of all Territory centres surveyed, Alice Springs recorded the lowest cost for both baskets, while Darwin recorded the second cheapest basket, followed by Katherine, Nhulunbuy and Yulara. Nonetheless, by individual grocery store there were some re-rankings from Series One to Series Two basket. For example, Alice Springs Woolworths went from being ranked third cheapest in the Series One basket to second cheapest with the Series Two basket (see tables on page 7).

In addition, the pattern of cost variations, from Darwin, was consistent across both surveys (see tables on page 8).

For further information on the survey methodology and changes introduced in the latest survey see technical paper December 2005, available at http://www.nt.gov.au/ntt/economics/econ_nt_gpsurvey.shtml

Grocery Price Survey – December 2005

Cost of (Series One) Basket by Location and by Store *

Supermarkets	Dec-2005		Jun-2005		Dec-2004		Jun-2004		2 year average	
	\$	Rank	\$	Rank	\$	Rank	\$	Rank	\$	Rank
Alice Springs Bi-Lo	165.39	1	163.64	3	164.06	4	162.14	2	163.81	2
Cairns Action Stocklands	166.03	2	171.34	17	168.00	17	166.06	8	167.86	7
Alice Springs Woolworths	166.84	3	162.63	2	162.46	2	160.20	1	163.03	1
Cairns Bi-Lo Central	167.05	4	162.30	1	165.03	6	162.30	3	164.17	3
Cairns Woolworths Stocklands	168.40	5	166.54	6	163.96	3	164.05	4	165.74	5
Mount Isa Coles	168.66	6	166.74	7	166.56	12	172.48	23	168.61	9
Cairns Coles Central	168.79	7	165.15	5	165.86	9	166.10	9	166.47	6
Alice Springs Coles	169.28	8	164.65	4	160.32	1	164.33	5	164.64	4
Darwin Bi-Lo Casuarina	170.26	9	170.98	15	170.74	22	167.33	13	169.83	16
Mount Isa Woolworths	171.47	10	166.79	8	167.77	16	169.09	18	168.78	10
Darwin Coles Northlakes	172.32	11	n.a.	n.a.	n.a.	n.a.	n.a.	n.a.	172.32	25
Darwin Woolworths Nightcliff	172.40	12	170.69	14	166.71	13	167.18	12	169.25	13
Darwin Woolworths Casuarina	172.48	13	169.57	10	165.92	10	164.48	6	168.11	8
Darwin Coles Casuarina	172.54	14	172.78	22	166.73	14	170.86	22	170.73	20
Darwin Coles Palmerston	172.81	15	172.29	21	166.51	11	168.91	17	170.13	17
Darwin Woolworths Coolalinga	173.47	16	171.00	16	164.94	5	167.62	14	169.26	14
Darwin Coles City	173.57	17	173.21	24	168.76	19	172.69	24	172.06	24
Katherine Woolworths	173.61	18	171.80	19	165.21	7	170.41	20	170.26	18
Darwin Woolworths Humpty Doo	173.83	19	170.21	12	167.15	15	167.64	15	169.71	15
Darwin Woolworths Palmerston	174.08	20	169.77	11	165.64	8	166.43	10	168.98	11
Darwin Coles Karama	174.46	21	172.01	20	170.90	23	169.77	19	171.78	22
Darwin Woolworths Hibiscus	174.95	22	170.65	13	169.66	21	165.84	7	170.27	19
Darwin Woolworths Cavenagh St	175.60	23	172.88	23	169.60	20	168.44	16	171.63	21
Darwin Woolworths Knuckey St	176.65	24	171.35	18	172.42	24	166.77	11	171.80	23
Nhulunbuy Woolworths	201.99	25	203.90	26	194.99	25	195.16	25	199.01	26
Yulara IGA	218.69	26	203.19	25	212.00	26	213.69	26	211.89	27
Darwin Bi-Lo Northlakes	n.a.	n.a.	167.92	9	168.68	18	170.56	21	169.05	12

Cost of (Series Two) Basket by Location and by Store *

Supermarkets	Dec-2005		Jun-2005		Dec-2004		Jun-2004		2 year average	
	\$	Rank	\$	Rank	\$	Rank	\$	Rank	\$	Rank
Alice Springs Bi-Lo	153.02	1	n.a.	n.a.	n.a.	n.a.	n.a.	n.a.	n.a.	n.a.
Alice Springs Woolworths	154.78	2	n.a.	n.a.	n.a.	n.a.	n.a.	n.a.	n.a.	n.a.
Cairns Bi-Lo Central	154.96	3	n.a.	n.a.	n.a.	n.a.	n.a.	n.a.	n.a.	n.a.
Cairns Action Stocklands	156.54	4	n.a.	n.a.	n.a.	n.a.	n.a.	n.a.	n.a.	n.a.
Mount Isa Coles	156.66	5	n.a.	n.a.	n.a.	n.a.	n.a.	n.a.	n.a.	n.a.
Cairns Coles Central	156.86	6	n.a.	n.a.	n.a.	n.a.	n.a.	n.a.	n.a.	n.a.
Cairns Woolworths Stocklands	156.93	7	n.a.	n.a.	n.a.	n.a.	n.a.	n.a.	n.a.	n.a.
Alice Springs Coles	157.00	8	n.a.	n.a.	n.a.	n.a.	n.a.	n.a.	n.a.	n.a.
Mount Isa Woolworths	158.91	9	n.a.	n.a.	n.a.	n.a.	n.a.	n.a.	n.a.	n.a.
Darwin Bi-Lo Casuarina	159.20	10	n.a.	n.a.	n.a.	n.a.	n.a.	n.a.	n.a.	n.a.
Darwin Coles Northlakes	159.97	11	n.a.	n.a.	n.a.	n.a.	n.a.	n.a.	n.a.	n.a.
Darwin Woolworths Casuarina	160.89	12	n.a.	n.a.	n.a.	n.a.	n.a.	n.a.	n.a.	n.a.
Darwin Woolworths Nightcliff	161.10	13	n.a.	n.a.	n.a.	n.a.	n.a.	n.a.	n.a.	n.a.
Darwin Coles City	161.37	14	n.a.	n.a.	n.a.	n.a.	n.a.	n.a.	n.a.	n.a.
Darwin Coles Casuarina	161.58	15	n.a.	n.a.	n.a.	n.a.	n.a.	n.a.	n.a.	n.a.
Darwin Coles Palmerston	161.59	16	n.a.	n.a.	n.a.	n.a.	n.a.	n.a.	n.a.	n.a.
Darwin Woolworths Coolalinga	161.63	17	n.a.	n.a.	n.a.	n.a.	n.a.	n.a.	n.a.	n.a.
Darwin Coles Karama	161.80	18	n.a.	n.a.	n.a.	n.a.	n.a.	n.a.	n.a.	n.a.
Darwin Woolworths Humpty Doo	162.17	19	n.a.	n.a.	n.a.	n.a.	n.a.	n.a.	n.a.	n.a.
Katherine Woolworths	162.47	20	n.a.	n.a.	n.a.	n.a.	n.a.	n.a.	n.a.	n.a.
Darwin Woolworths Palmerston	163.08	21	n.a.	n.a.	n.a.	n.a.	n.a.	n.a.	n.a.	n.a.
Darwin Woolworths Hibiscus	163.14	22	n.a.	n.a.	n.a.	n.a.	n.a.	n.a.	n.a.	n.a.
Darwin Woolworths Cavenagh St	164.44	23	n.a.	n.a.	n.a.	n.a.	n.a.	n.a.	n.a.	n.a.
Darwin Woolworths Knuckey St	164.97	24	n.a.	n.a.	n.a.	n.a.	n.a.	n.a.	n.a.	n.a.
Nhulunbuy Woolworths	189.69	25	n.a.	n.a.	n.a.	n.a.	n.a.	n.a.	n.a.	n.a.
Yulara IGA	204.04	26	n.a.	n.a.	n.a.	n.a.	n.a.	n.a.	n.a.	n.a.

* Expenditures figures adjusted to reflect CPI estimates for each previous period.
Source: NT Treasury

Grocery Price Survey – December 2005

Cost of (Series One) Grocery Basket – December 2005

Expenditure (\$)	Alice						
	Darwin	Springs	Katherine	Nhulunbuy	Yulara	Cairns	Mount Isa
Dairy & Related Products	16.81	15.99	16.65	20.81	19.58	16.04	15.97
Bread & Cereal Products	18.26	18.00	18.40	23.83	24.75	17.61	18.11
Meat & Seafoods	26.66	25.94	26.38	31.11	37.16	25.25	26.52
Fruit & Vegetables	28.06	26.43	27.15	34.13	28.96	26.81	26.55
Non-Alcoholic Drinks & Snacks	25.80	24.98	26.83	28.68	39.43	25.76	25.91
Other Food	16.64	15.73	16.77	18.76	20.45	15.59	15.94
Household Supplies	16.79	16.24	16.97	17.87	20.87	16.65	16.67
Pharmaceuticals	8.11	7.92	8.07	8.66	9.35	7.70	8.19
Pet Foods	4.85	4.79	4.70	5.44	4.97	4.79	4.88
Personal Care Products	11.54	11.15	11.69	12.69	13.17	11.37	11.31
Total	173.53	167.17	173.61	201.99	218.69	167.57	170.06
Variation from Darwin (\$)							
Dairy and Related Products		-0.82	-0.16	4.00	2.77	-0.76	-0.84
Bread and Cereal Products		-0.26	0.14	5.57	6.49	-0.66	-0.16
Meat & Seafoods		-0.73	-0.29	4.45	10.50	-1.41	-0.14
Fruit & Vegetables		-1.63	-0.91	6.08	0.91	-1.25	-1.50
Non-Alcoholic Drinks and Snacks		-0.83	1.03	2.88	13.62	-0.05	0.11
Other Food		-0.91	0.13	2.12	3.80	-1.06	-0.70
Household Supplies		-0.55	0.18	1.08	4.08	-0.14	-0.12
Pharmaceuticals		-0.19	-0.04	0.55	1.23	-0.42	0.08
Pet Foods		-0.06	-0.14	0.60	0.12	-0.05	0.03
Personal Care Products		-0.39	0.15	1.16	1.64	-0.16	-0.22
Total		-6.36	0.08	28.47	45.16	-5.96	-3.47
% Variation from Darwin		-3.66 %	0.05 %	16.40 %	26.02 %	-3.44 %	-2.00 %

* may not add due to rounding
Source: NT Treasury

Cost of (Series Two) Grocery Basket – December 2005

Expenditure (\$)	Alice						
	Darwin	Springs	Katherine	Nhulunbuy	Yulara	Cairns	Mount Isa
Dairy & Related Products	14.64	14.09	14.59	18.60	17.83	13.77	13.76
Bread & Cereal Products	18.06	17.65	18.22	23.72	24.54	17.43	18.06
Meat & Seafoods	27.57	26.08	27.81	32.43	37.31	32.43	26.61
Fruit & Vegetables	26.59	24.94	25.72	32.42	27.57	32.42	25.17
Non-Alcoholic Drinks & Snacks	24.18	23.42	24.82	27.05	36.60	27.05	24.04
Other Food	17.40	16.37	17.60	19.43	20.91	19.43	17.04
Household Supplies	28.50	27.46	28.86	30.44	34.17	30.44	28.08
Pet Foods	4.99	4.92	4.84	5.60	5.11	5.60	5.02
Total	161.92	154.94	162.47	189.69	204.04	156.32	157.79
Variation from Darwin (\$)							
Dairy & Related Products		-0.54	-0.05	3.96	3.19	-0.87	-0.88
Bread & Cereal Products		-0.41	0.16	5.66	6.48	-0.63	0.00
Meat & Seafoods		-1.49	0.24	4.86	9.74	4.86	-0.96
Fruit & Vegetables		-1.65	-0.86	5.83	0.99	5.83	-1.41
Non-Alcoholic Drinks & Snacks		-0.76	0.64	2.87	12.42	2.87	-0.14
Other Food		-1.03	0.20	2.03	3.51	2.03	-0.36
Household Supplies		-1.04	0.36	1.94	5.67	1.94	-0.42
Pet Foods		-0.06	-0.15	0.61	0.12	0.61	0.03
Total		-6.99	0.55	27.77	42.12	-5.60	-4.14
% Variation from Darwin		-4.32 %	0.34 %	17.15 %	26.01 %	-3.46 %	-2.55 %

* may not add due to rounding
Source: NT Treasury