

Summary

In 2008-09, the number of guest nights and takings in the Territory increased from 2007-08. Room occupancy rates have fallen from the peak recorded in the March 2008 quarter. However, this may be attributed to an increase in accommodation capacity in the Territory.

Guest Nights (original)

| | NT | Aust |
|---------------------|-------|-------|
| Annual change | ↑6.0% | ↓0.2% |
| Year on year change | ↑0.4% | ↑0.5% |

Data on the number of guest nights is only available in original terms. In the June 2009 quarter, guest nights in the Territory increased by 6.0% from the same time last year to 725 100. Nationally, the number of guest nights fell slightly by 0.2% from the June 2008 to the June 2009 quarters.

Takings (trend)

| | NT | Aust |
|-----------------------|-------|-------|
| Change in the quarter | ↑4.8% | ↓1.0% |
| Annual change | ↑7.8% | ↓4.7% |
| Year on year change | ↑8.0% | ↓0.3% |

In the June 2009 quarter, takings from hotels, motels and services apartments with 15 or more rooms in the Territory was \$66.0 million, an increase of 4.8% from the previous quarter. Nationally, takings decreased by 1.0% over the same period.

In 2008-09, takings in the Territory increased by 8.0% from 2007-08. In comparison, the year on year change in takings in other jurisdictions varied between a decrease of 3.4% in New South Wales to a 4.9% increase in the Australian Capital Territory. Nationally, total takings in Australia decreased by 0.3% between 2007-08 and 2008-09.

Data on takings is available at the regional level in original terms only. In the year to June 2009, in original terms, takings increased in Darwin (24.4%), Katherine (12.8%) and Alice Springs (2.8%) and decreased in the rest of the Territory (-7.1%).

Room Occupancy (trend)

| | NT | Aust |
|-----------------------------|-------|-------|
| Occupancy rate Jun 2009 qtr | 63.5% | 65.1% |
| Change in the month (ppt)* | ↑0.1 | ↓0.5 |
| Annual change (ppt)* | ↓4.6 | ↓2.6 |

*ppt = percentage points

The room occupancy rate in the Territory in the June 2009 quarter was 63.5%. The occupancy rate in the Territory was relatively stable in 2008-09. Nationally, the room occupancy rate has been steadily falling during 2008-09 with the June 2009 quarter occupancy rate at 62.2%.

The Territory's room occupancy rate in June 2009 quarter has moderated from the peak recorded in the March 2008 quarter. The decrease in room occupancy rates may be attributed to an increase in accommodation capacity in the Territory.

Chart 1: Guest nights
(Year on year percentage change)

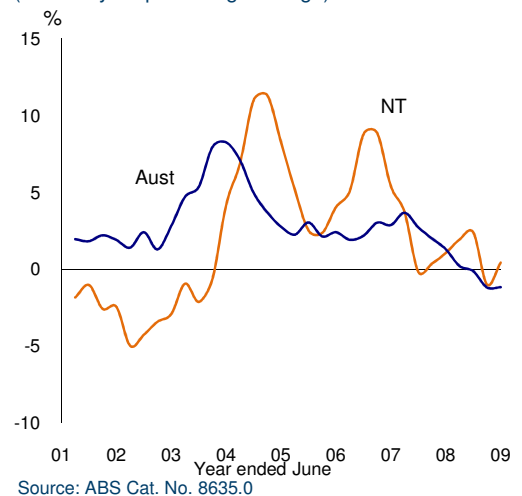


Chart 2: Tourist Accommodation Takings
(Year on year percentage change)

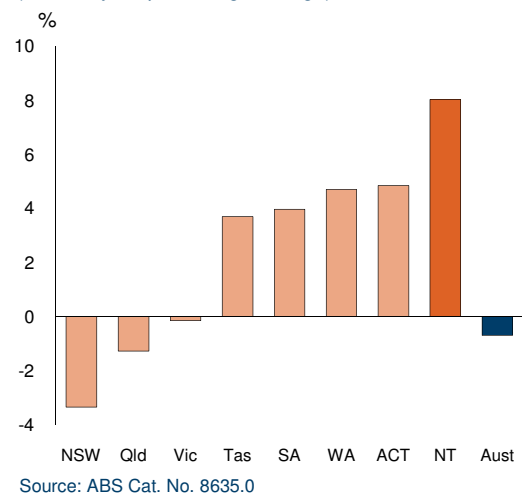
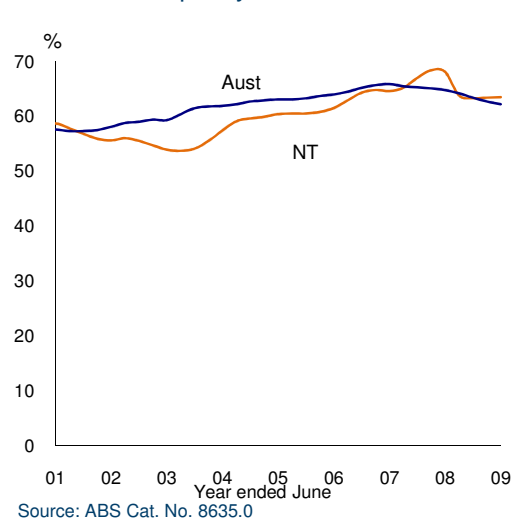


Chart 3: Occupancy rates



Hotels, Motels and Serviced Apartments (15 or more rooms)

| | June Quarter | | change | | |
|---------------------------|--------------|--------------|------------------------|---------------------|---------------------------|
| | quarter | year to date | quarterly ¹ | annual ² | year on year ³ |
| Northern Territory | | | | | |
| original | | | | | |
| <i>takings (\$m)</i> | 70 | 254 | 67.4% | 16.3% | 10.9% |
| - Darwin | 44 | 142 | 113.9% | 32.7% | 24.4% |
| - Alice Springs | 9 | 35 | 35.0% | 1.9% | 2.8% |
| - Katherine | 3 | 10 | 85.1% | 2.3% | 12.8% |
| - Rest of NT | 14 | 67 | 8.7% | -8.1% | -7.1% |
| <i>room occup. rate</i> | 66.3% | 63.6% | 16.6 ppt | -2.7 ppt | -3.0 ppt |
| - Darwin | 75.8% | 71.4% | 22.1 ppt | -4.9 ppt | -4.6 ppt |
| - Alice Springs | 63.6% | 62.3% | 12.3 ppt | -4.0 ppt | -2.3 ppt |
| - Katherine | 61.2% | 54.3% | 22.5 ppt | -0.3 ppt | 1.0 ppt |
| - Rest of NT | 48.7% | 51.4% | 6.1 ppt | -4.6 ppt | -5.8 ppt |
| <i>guest nights</i> | 725 100 | 2 727 600 | 40.6% | 6.0% | 0.4% |
| - Darwin | 401 116 | 1 420 118 | 52.2% | 19.0% | 10.5% |
| - Alice Springs | 128 324 | 516 398 | 26.6% | -5.4% | -9.8% |
| - Katherine | 52 148 | 184 310 | 77.8% | -6.4% | -4.8% |
| - Rest of NT | 143 512 | 606 774 | 18.0% | -8.0% | -8.7% |
| seasonally adj | | | | | |
| <i>takings (\$m)</i> | 70 | 253 | 17.8% | 16.3% | 9.3% |
| <i>room occup. rate</i> | 64.2% | 63.6% | 1.4 ppt | -2.5 ppt | -3.5ppt |
| trend | | | | | |
| <i>takings (\$m)</i> | 66 | 251 | 4.8% | 7.8% | 8.0% |
| <i>room occup. rate</i> | 63.5% | 63.5% | 0.1 ppt | -4.6 ppt | -3.7ppt |
| Australia (trend) | | | | | |
| <i>takings (\$m)</i> | 1 897 | 7 739 | -1.0% | -4.7% | -0.3% |
| <i>New South Wales</i> | 586 | 2 428 | -2.1% | -8.5% | -3.4% |
| <i>Victoria</i> | 341 | 1 402 | -1.3% | -5.6% | -0.2% |
| <i>Queensland</i> | 504 | 2 048 | -0.9% | -3.9% | -1.3% |
| <i>South Australia</i> | 90 | 361 | -0.3% | 0.6% | 4.0% |
| <i>Western Australia</i> | 211 | 849 | -0.2% | -1.6% | 4.7% |
| <i>Tasmania</i> | 49 | 192 | 1.2% | 4.6% | 3.7% |
| <i>Northern Territory</i> | 66 | 251 | 4.8% | 7.8% | 8.0% |
| <i>ACT</i> | 51 | 210 | -0.7% | -4.2% | 4.9% |

¹ compares the latest quarter with the previous quarter

² compares the latest quarter with the same quarter last year

³ compares the 4 quarters up to and including the latest quarter with the previous 4 quarter period

Caution is advised when using monthly data for the Territory, which is often derived from small samples and highly volatile.

Source: ABS Cat. No. 8635.0

Although all due care has been exercised in the preparation of this material, no responsibility is accepted for any errors or omission.