

Summary

In September 2009, the Territory's retail trade turnover decreased by 0.7% from the previous month. However, in year on year terms, the Territory had the highest growth in retail trade turnover, recording an 11.4% increase.

The following analysis is based on seasonally adjusted data.

Value in the month, annual % change

Northern Territory	\$216M	↑ 4.9%
Australia	\$19 719M	↑ 6.0%

Monthly Change

In September 2009, the value of the Territory's retail turnover was \$216 million, a decrease of 0.7% from the previous month. All jurisdictions reported a decrease in retail trade turnover between August 2009 and September 2009 except for Victoria. Nationally, retail trade decreased by 0.2% to \$19.7B over the same period (chart 1).

The monthly change in the Territory's retail trade turnover figures were driven by a decrease in the following categories:

- 'Cafes, restaurants and takeaway food services' (8.8%); and
- 'Clothing retailing' (2.8%).

This was partly offset by increases in:

- 'Food retailing' (0.4%); and
- 'Pharmaceutical, cosmetic and toiletry' (1.5%).

Annual Change

The Territory's retail trade turnover increased by 4.9% between September 2008 and September 2009. This was the fifth highest growth behind New South Wales (8.8%), Victoria (7.5%), the Australian Capital Territory (6.9%) and Tasmania (5.9%). Nationally, the value of retail trade turnover increased by 6.0% over that same period.

Year on Year Change

In year on year terms, a more stable measure of growth, retail turnover in the Territory increased by 11.4% in the year to September 2009, the highest growth of the jurisdictions and above the national average of 5.2% (chart 2 and 3).

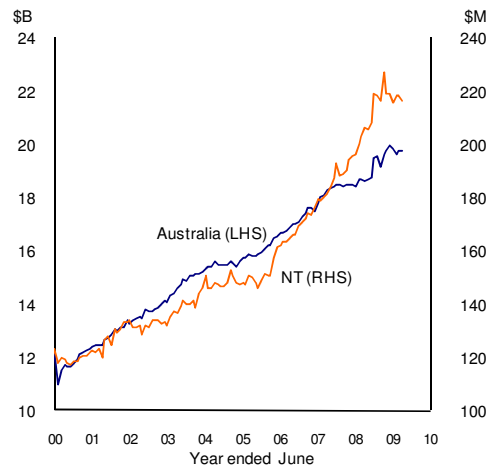
Real Retail Turnover (seasonally adjusted)

Value in the quarter, year on year % change

Northern Territory	\$619M	↑ 7.7%
Australia	\$56 959M	↑ 2.3%

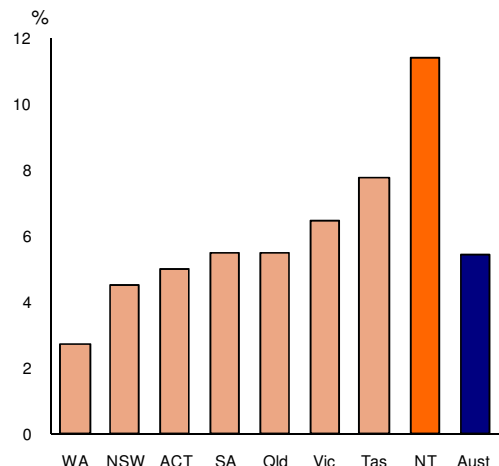
Real retail turnover is reported on a quarterly basis and is adjusted for inflation. In the September quarter 2009 seasonally adjusted real retail trade decreased by 0.2% in the Territory, compared with a 0.4% decrease nationally. In the year to September 2009, real retail turnover in the Territory increased 7.7%, the highest of all jurisdictions and above the national growth of 2.3%.

Chart 1: Retail Turnover
(Monthly, current prices, s.a.)



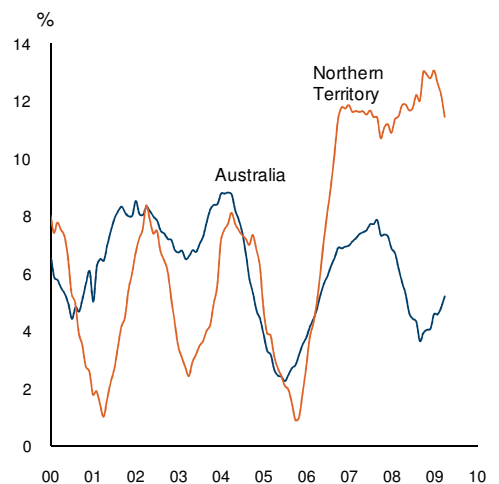
Source: ABS Cat. No. 8501.0

Chart 2: Retail Turnover
(Year on year percentage change, current prices)



Source: ABS Cat. No. 8501.0

Chart 3: Retail Turnover
(Year on year percentage change, current prices)



Source: ABS Cat. No. 8501.0

Retail Turnover (current prices, \$M)

	September		change		
	month	year to date	monthly ¹	annual ²	year on year ³
Northern Territory					
original	222	2 599	-6.0%	5.1%	11.4%
seasonally adj	216	2 600	-0.7%	4.9%	11.8%
Australia					
original	19 030	233 671	-0.7%	6.4%	5.2%
seasonally adj	19 719	233 844	-0.2%	6.0%	5.4%
Other jurisdictions (seasonally adj)					
New South Wales	6 078	71 597	-0.1%	8.8%	4.8%
Victoria	4 972	58 572	0.4%	7.5%	6.6%
Queensland	4 093	48 877	-0.6%	4.3%	5.7%
South Australia	1 416	17 036	-0.6%	1.5%	5.6%
Western Australia	2 133	25 547	-0.6%	1.7%	3.0%
Tasmania	441	5 230	0.0%	5.9%	7.9%
ACT	370	4 386	-0.5%	6.9%	5.2%

Retail Turnover (real prices, \$M)

	September		change		
	quarter	year to date	quarter ¹	annual ²	year on year ³
Northern Territory					
original	663	2 489	8.3%	3.9%	7.6%
seasonally adj	619	2 486	-0.2%	3.7%	7.7%
Australia					
original	55 388	225 909	0.8%	3.4%	2.2%
seasonally adj	56 959	225 898	-0.4%	3.3%	2.3%

1 compares the latest month/quarter with the previous month/quarter

2 compares the latest month/quarter with the same month/quarter last year

3 compares the 12 months up to and including the latest month with the previous 12 month period

4 seasonal adjustment removes from a series influences that are systematic and calendar related

Trend series data is not available for retail trade turnover

Caution is advised when using monthly data for the Territory, which is often derived from small samples and highly volatile.

Source: ABS Cat. No. 8501.0

Although all due care has been exercised in the preparation of this material, no responsibility is accepted for any errors or omission.