

Annual population growth in the Territory and nationally continued to moderate in the September quarter 2010 (Chart 1). Nationally, this reflects a large fall in net overseas migration (NOM), while in the Territory it reflects lower levels of NOM and declining net interstate migration (NIM).

## Population

	NT	Aust
Annual population growth	1.3%	1.6%
Estimated Resident Population (000)	230.2	22 408

In annual terms, growth in the Territory's resident population moderated to 1.3% in the September quarter 2010, reflecting lower levels of NOM and declining NIM through the year. Weakness in NIM in the Territory is likely due to a strengthening national economy and jobs market and the completion of a number of major projects in the Territory. Lower NOM in the Territory reflects changes to Commonwealth Government policy on student and temporary work visas.

The Territory recorded the third lowest annual population growth rate of the jurisdictions ahead of South Australia (1.1%) and Tasmania (0.8%), while Western Australia recorded the highest annual population growth rate (2.1%). Nationally, the annual population growth rate moderated to 1.6% (Chart 2).

## Net Interstate Migration (NIM)

NIM in the Territory is highly volatile, reflecting the young and transient nature of the Territory's population. In the Territory in the September quarter 2010, NIM declined by 288 persons, compared to a decline of 168 persons in the June quarter 2010.

In the year to the September quarter 2010, the Territory had a net loss of 1163 persons to interstate jurisdictions reflecting a 5.2% increase in the number of persons leaving the Territory to interstate destinations, likely due to a strengthening national economy and jobs market, and the completion of several major projects in the Territory.

## Net Overseas Migration (NOM)

The ABS has developed a new method of estimating NOM (see data statement on following page).

In the September quarter 2010, NOM in the Territory was 192 persons, compared to 481 persons in the June quarter 2010. NOM in the Territory moderated to 1 144 persons in the year to the September quarter 2010, (Chart 3).

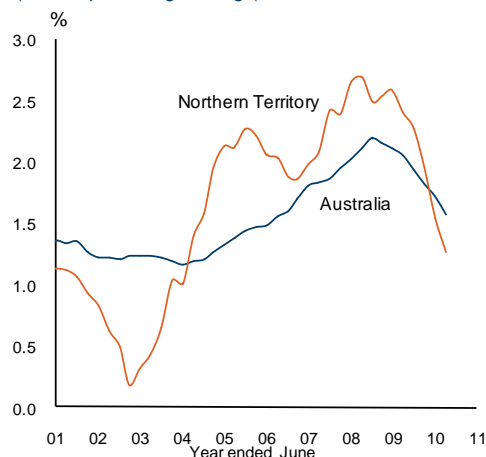
## Natural Increase

Natural increase (births less deaths) is a fairly stable contributor to the Territory's population growth rate. In the September quarter 2010, natural increase contributed 571 persons to growth, comprising 829 births and 258 deaths.

Released: 29 March 2011

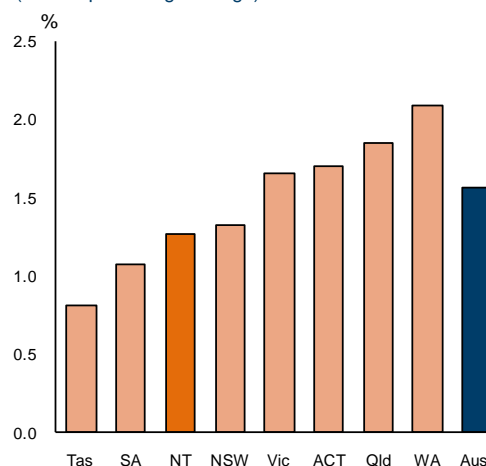
Next Release: 23 June 2011

**Chart 1: Population Growth**  
(annual percentage change)



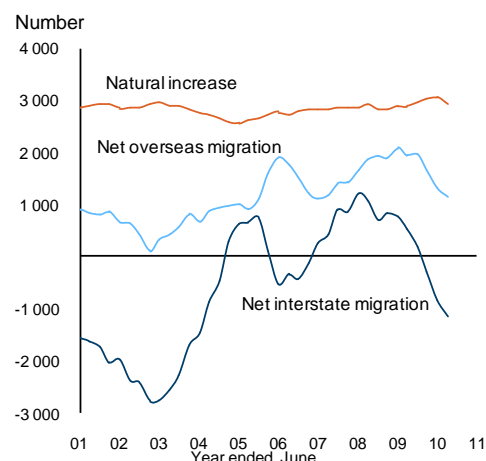
Source: ABS Cat. No. 3101.0

**Chart 2: Population Growth**  
(annual percentage change)



Source: ABS Cat. No. 3101.0

**Chart 3: Territory Population Components<sup>1</sup>**  
(moving annual total)



Source: ABS Cat. No. 3101.0

<sup>1</sup>New methods were introduced into the calculation of net overseas migration from the September quarter 2006.

## Estimated Resident Population and Components of Change

	September Quarter		change		
	quarter	year to date	quarterly <sup>1</sup>	annual <sup>2</sup>	year on year <sup>3</sup>
<b>Northern Territory</b>					
population growth	475	2 892			
natural increase	571	2 911			
<i>births</i>	829	3 899			
<i>deaths</i>	258	988			
net migration					
<i>overseas</i>	192	1 144			
<i>interstate</i>	- 288	- 1 163			
total population	230 186		0.2%	1.3%	1.8%
<b>Australia</b>					
population growth	78 828	345 524			
total population	22 407 675		0.4%	1.6%	1.8%

<sup>1</sup> compares the latest quarter with the previous quarter

<sup>2</sup> compares the latest quarter with the same quarter last year

<sup>3</sup> compares the 4 quarters up to and including the latest quarter with the previous 4 quarter period

Caution is advised when using monthly data for the Territory, which is often derived from small samples and highly volatile.

Source: ABS Cat. No. 3101.0

### Interstate Migration Model

Northern Territory Treasury has ongoing concerns over the ability of the ABS interstate migration model to accurately estimate interstate flows to and from the Territory and therefore population growth.

The ABS model for estimating interstate migration flows is based on Medicare 'change of address' information with adjustments for defence personnel not covered by Medicare. While this model balances at a national level and works well for most large jurisdictions, it performs poorly in the estimation of movements to and from the Territory.

The Territory has a much higher level of population transience compared to other states. In a typical year, around 8% to 10% of the total population of the Territory will move interstate. The youth and mobility of those migrating to the Territory and their low propensity to use medical services means their 'place of residence' record with Medicare is often incorrect. Hence, the Medicare model (using Medicare Australia data, formerly the Health Insurance Commission) probably under enumerates the residence of many short-term migrants to the Territory. Compounding this is the typically older and higher health care user profile of those migrating from the Territory. This type of person is more likely to update their Medicare 'place of residence' record once settled in another state. Under-estimation of the Territory's population has a significant impact on population-based funding the Territory receives from the Commonwealth.

### Data Statement

The current interstate migration model has been revised to include updated expansion factors, based on Census 2006 data. Expansion factors are used to account for an under coverage of Medicare data by various ages and sex.

ABS has developed a new method for estimating net overseas migration (NOM) which is expected to better reflect movements of travellers and whether they should be included in the Australian resident population. Results of the new NOM method are final up to June 2007, all estimates onwards are revised preliminary.

ABS advises that ERPs for 30 June 2006 and the 2001-06 intercensal period are now final. All estimates from September quarter 2006 onwards are preliminary.

Released: 29 March 2011

Next Release: 23 June 2011

