

## Summary

In September 2009 there was a decrease in the number of new motor vehicle sold in the Territory. This was due to a decline in the sale of new passenger vehicles. New SUV and other vehicle sales increased in the month.

**Number of Motor Vehicle Sales (s.a.)** NT ↓2.1% Aust ↑2.9%  
**Change in the month**

(For monthly and annual totals, refer to Table 1: New Motor Vehicle Sales on the next page.)

In September 2009, seasonally adjusted new motor vehicle sales in the Territory decreased by 2.1% to 758. Nationally, they increased by 2.9% to 77 744 (see Chart 1).

In September 2009, Territory new:

- passenger vehicle sales decreased by 12.3% to 342;
- SUV sales increased by 11.8% to 170; and
- other vehicle sales increased by 6.5% to 246.

**Number of Motor Vehicle Sales (original)** NT ↓15.6% Aust ↓13.6%  
**Year on year change**

In the year to September 2009, the number of new motor vehicle sales in the Territory decreased by 15.6% to 9 052. Nationally, sales decreased by 13.6% to 909 206.

The Territory reported the second highest decline in sales of the jurisdictions behind the Western Australian experiencing a 16.8% year on year decrease (see Chart 2).

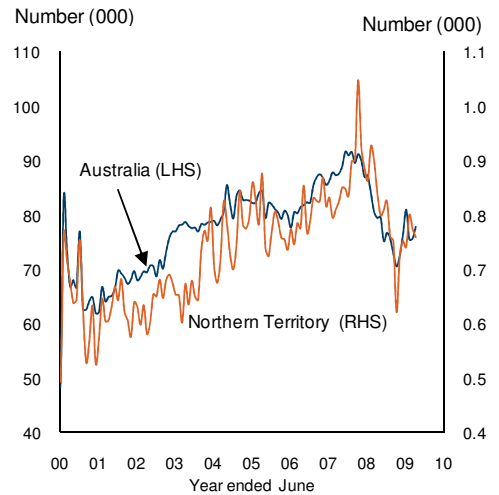
The number of new motor vehicle sales in the Territory in the year to September 2009 has continued to decline from the peak reported over the same period a year ago. This reflects households and businesses becoming more cautious in their spending, especially for big ticket items such as new motor vehicles, during uncertain economic times.

In the year to September 2009, Territory new:

- passenger vehicle sales decreased by 11.8% to 4 068;
- SUV sales decreased by 25.3% to 1 956; and
- other vehicle sales decreased by 13.2% to 3 028 (see Chart 3).

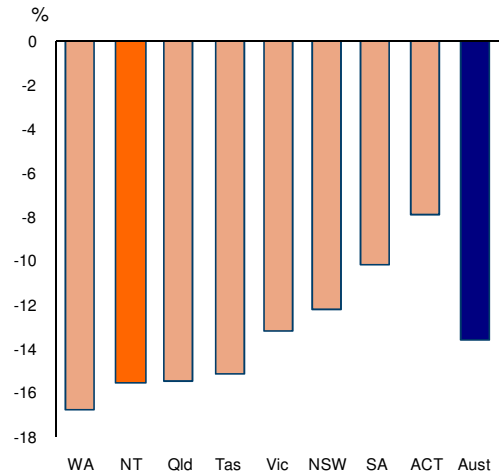
With the exception of a potential spike in December, due to businesses trying to access the temporary increases in plant and machinery (including vehicles) tax rebates (up to 50 per cent) before they expire, growth in monthly new motor vehicle sales are to expected to remain subdued over the remainder of 2009. Contributing to the weakness in growth are expectations of additional increases in interest rates, impacting on household disposable incomes, and households delaying purchasing new motor vehicles in anticipation of a tariff reduction (from 10% to 5%) for passenger vehicles from 1 January 2010.

**Chart 1: Monthly New Motor Vehicle Sales (Seasonally adjusted)**



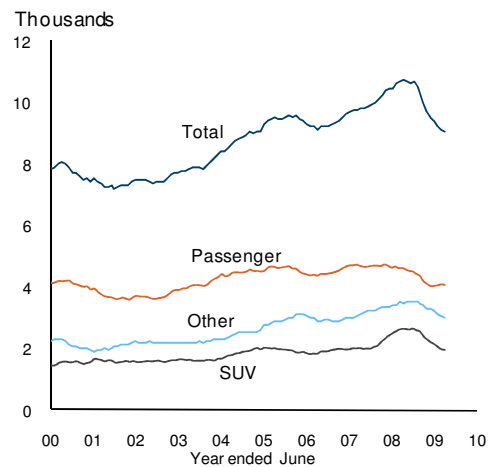
Source: ABS Cat. No. 9314.0

**Chart 2: New Motor Vehicle Sales (Year on year percentage change, original)**



Source: ABS Cat. No. 9314.0

**Chart 3: Territory New Motor Vehicle Sales (Moving annual total)**



Source: ABS Cat. No. 9314.0

Table 1: New Motor Vehicle Sales

	September		change		
	month	year to date	monthly <sup>1</sup>	annual <sup>2</sup>	year on year <sup>3</sup>
<b>Northern Territory</b>					
original	698	9 052	-3.5%	-7.5%	-15.6%
<i>passenger</i>	284	4 068	-20.4%	-4.4%	-11.8%
<i>suv</i>	174	1 956	20.8%	-11.2%	-25.3%
<i>other</i>	240	3 028	8.1%	-8.4%	-13.2%
seasonally adj	758	9 106	-2.1%	-9.7%	-15.0%
<i>passenger</i>	342	4 105	-12.3%	-3.4%	-10.9%
<i>suv</i>	170	1 964	11.8%	-16.3%	-24.6%
<i>other</i>	246	3 035	6.5%	-12.8%	-13.2%
trend	np	np	np	np	
<b>Australia</b>					
original	78 131	909 206	6.6%	-3.5%	-13.6%
<i>passenger</i>	47 284	535 029	5.3%	-3.2%	-13.9%
<i>suv</i>	14 443	175 951	3.4%	1.7%	-14.4%
<i>other</i>	16 404	198 226	13.9%	-8.2%	-12.2%
seasonally adj	77 744	908 275	2.9%	-2.0%	-13.6%
<i>passenger</i>	46 186	535 378	1.6%	-1.6%	-13.7%
<i>suv</i>	15 345	175 892	2.6%	2.8%	-14.3%
<i>other</i>	16 213	197 003	7.3%	-7.4%	-12.7%
trend	np	np	np	np	

<sup>1</sup> compares the latest month with the previous month

<sup>2</sup> compares the latest month with the same month last year

<sup>3</sup> compares the 12 months up to and including the latest month with the previous 12 month period

np not published

Caution is advised when using monthly data for the Territory, which is often derived from small samples and highly volatile

Source: ABS Cat. No. 9314.0

### Suspension of Trend Estimates

Following the extension of the eligibility period for the Australian Government's *Small Business and General Business Tax Break* to December 2009, the ABS has suspended the trend data series for the Sales of New Motor Vehicle publication.

The ABS notes that, "The trend series attempts to measure the underlying behaviour in new motor vehicle sales. In the short term, this measurement may be significantly affected by unusual influences in the original and seasonally adjusted data, like those observed in May and June 2009. If the trend estimates in the publication were to be calculated without fully accounting for this irregular event, they would be likely to provide a misleading view of the underlying trend in new motor vehicle sales activity."

The ABS advises that the trend series will be reintroduced when more certainty emerges in the underlying behaviour of new car sales.

Source: ABS Cat. No. 9314.0

Although all due care has been exercised in the preparation of this material, no responsibility is accepted for any errors or omission.

Released: 21 October 2009

Next Release: 23 November 2009

