

Nationally, media analysis of the ABS Labour Force Survey (LFS) is concentrated on seasonally adjusted data. Due to the high standard errors and volatile nature of seasonally adjusted data for the Northern Territory's LFS, the ABS only publishes data in original and trend terms. As such, the analysis of Territory LFS data presented below is based on the trend data.

Unemployment Rate

	NT (trend)	Aus (s.a.)
Unemployment Rate (%)	3.9	5.7
Change in the month (ppt)	flat	↑ 0.2
Change through the year (ppt)	↑ 0.4	↑ 1.5

Note: Refer to page 2 for greater detail. Also, there are quality issues associated with the data. Refer to the data quality section on page 3 for more information.

In May 2009, the trend unemployment rate was 3.9% in the Territory, unchanged from April 2009 (revised). Nationally, the seasonally adjusted unemployment rate increased to 5.7% from 5.5% in April 2009 (see Chart 1). The Territory has the second lowest trend unemployment rate of the jurisdictions behind the ACT.

The unemployment rate in the Territory generally moves in line with the national rate and is expected to increase as employers continue to experience the pressures of the global financial crisis, particularly in the mining and retail sectors.

Employment

	NT (trend)	Aus (s.a.)
Employment (000)	120.6	10 793
Change in the month (%)	↑ 0.9	flat
Change through the year (%)	↑ 6.7	↑ 0.3

Note: Refer to page 2 for greater detail.

In May 2009, the trend total number of persons employed in the Territory increased by 0.9% to 120 576. Annual growth in Territory employment was the highest of the jurisdictions and remains above the national rate (Chart 2).

Job advertisements are a leading indicator of employment. In May 2009, the seasonally adjusted ANZ job advertisements series for the Territory decreased by 32.2 per cent, compared with a year earlier, suggesting employment growth will continue to moderate over the coming year.

Manpower's Employment Outlook Survey (Q3/2009) reports the Territory along with the ACT has the most optimistic employment outlook of the jurisdictions.

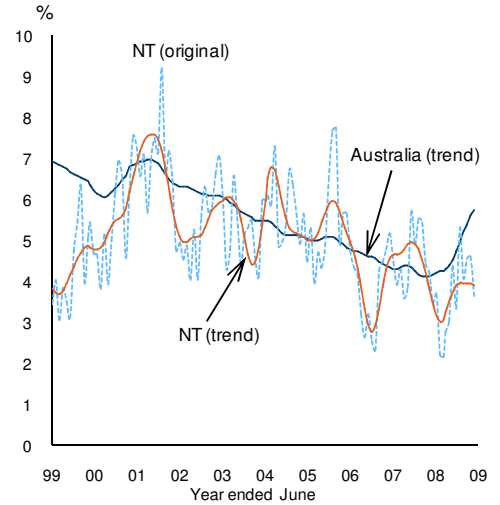
Labour Force Participation

	NT (trend)	Aus (s.a.)
Participation Rate (%)	75.8	65.5
Change in the month (ppt)	↑ 0.5	↑ 0.1
Change through the year (ppt)	↑ 3.4	↑ 0.1

Note: Refer to page 2 for greater detail.

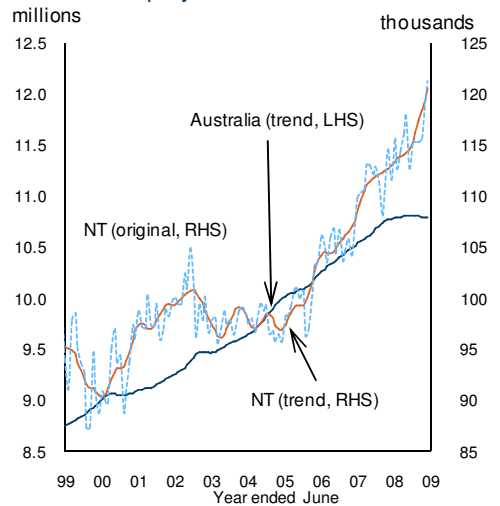
The Territory's participation rate increased to 75.8% in May 2009, the highest rate on record and remains the highest of all the jurisdictions (Chart 3).

Chart 1: Unemployment Rate



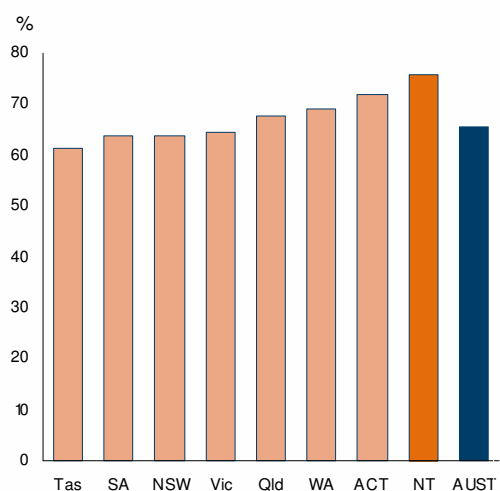
Source: ABS Cat. No. 6202.0

Chart 2: Employment



Source: ABS Cat. No. 6202.0

Chart 3: Participation Rate (trend)



Source: ABS Cat. No. 6202.0

Labour Force Statistics

	May	April	change		
			monthly ¹	annual ²	year on year ³
Northern Territory					
original					
employment	121 229	119 570	1.4%	8.6%	4.1%
- full time	98 326	98 003	0.3%	13.3%	4.1%
- part time	22 904	21 567	6.2%	-7.5%	3.9%
unemployment rate	3.6%	4.6%	- 1.0 ppt	0.2 ppt	
participation rate	76.0%	75.8%	0.2 ppt	4.5 ppt	
labour force	125 808	125 329	0.4%	8.8%	3.2%
seasonally adj					
<i>not published for the Northern Territory</i>					
trend					
employment	120 576	119 534	0.9%	6.7%	
- full time	98 480	97 524	1.0%	12.0%	
- part time	22 096	22 010	0.4%	-11.8%	
unemployment rate	3.9%	3.9%	0.0 ppt	0.4 ppt	
participation rate	75.8%	75.3%	0.5 ppt	3.4 ppt	
labour force	125 444	124 412	0.8%	7.2%	
Australia					
original					
employment	10 781 637	10 784 839	0.0%	0.3%	1.3%
- full time	7 590 084	7 612 740	-0.3%	-0.8%	0.9%
- part time	3 191 552	3 172 099	0.6%	3.1%	2.4%
unemployment rate	5.8%	5.6%	0.2 ppt	1.5 ppt	
participation rate	65.5%	65.4%	0.1 ppt	0.1 ppt	
labour force	11 449 395	11 425 052	0.2%	2.0%	1.9%
seasonally adj					
employment	10 793 113	10 794 814	0.0%	0.3%	
- full time	7 643 115	7 669 282	-0.3%	-0.8%	
- part time	3 149 998	3 125 532	0.8%	3.1%	
unemployment rate	5.7%	5.5%	0.2 ppt	1.5 ppt	
participation rate	65.5%	65.4%	0.1 ppt	0.1 ppt	
labour force	11 444 295	11 418 785	0.2%	1.9%	
trend					
employment	10 788 119	10 789 274	0.0%	0.1%	
- full time	7 640 502	7 647 198	-0.1%	-1.0%	
- part time	3 147 617	3 142 076	0.2%	3.0%	
unemployment rate	5.7%	5.6%	0.1 ppt	1.6 ppt	
participation rate	65.5%	65.5%	0.0 ppt	0.0 ppt	
labour force	11 442 983	11 427 247	0.1%	1.8%	

¹ compares the latest month with the previous month

² compares the latest month with the same month last year

³ compares the 12 months up to and including the latest month with the previous 12 month period

ppt = percentage point

Caution is advised when using monthly data for the Territory, which is often derived from small samples and highly volatile.

ANZ Newspaper Job Advertisements

	May	April	monthly ¹	change annual ²	year on year ³
Northern Territory					
original	292	270	8.1%	-32.3%	-19.3%
seasonally adj	268	280	-4.5%	-32.2%	
Australia					
original	8 334	7 174	16.2%	-52.4%	-39.0%
seasonally adj	8 123	8 203	-1.0%	-52.5%	

¹ compares the latest month with the previous month

² compares the latest month with the same month last year

³ compares the 12 months up to and including the latest month with the previous 12 month period

Caution is advised when using monthly data for the Territory, which is often derived from small samples and highly volatile.

Data Quality

The ABS acknowledges there is extreme volatility and high standard errors associated with monthly Territory labour force figures. As such, these estimates should be used with caution.

It is important to note that analysis of national labour force data generally concentrates on seasonally adjusted data. As the ABS does not provide seasonally adjusted data for the Territory, all data are trend (smoothed over time) figures for comparative purposes. Also, changes included in the above tables may vary from those calculated from the publication due to greater detail provided in ABS spreadsheets used to create this brief.

Disclaimer

Although all due care has been exercised in the preparation of this material, no responsibility is accepted for any errors or omission.