

## Engineering Construction Work Done

(value in the quarter, annual % change, s.a.)

Northern Territory	\$257M	↓	29.5%
Australia	\$13 812M	↑	12.0%

In annual terms, seasonally adjusted engineering construction work done in the Territory fell by 29.5% to \$257M in the March quarter 2008, compared to an increase of 12% nationally.

In the year to March 2008, engineering construction work done decreased by 38.3% to \$1.0B in the Territory, primarily influenced by lower levels of construction activity in:

- 'Heavy industry' which decreased by 55.9% to \$577M.
- Increases in engineering activity were reported in; 'roads, highways and subdivisions' which increased by 19.6% to \$121M; 'telecommunications' which increased by 45.7% to \$120M; 'water storage and supply, sewerage and drainage' which increased by 55.6% to \$72M; 'recreation and other' which increased by 9.3% to \$46M; and 'electricity generation, transmission and pipelines' which increased by 29.7% to \$30M.
- In the year to March 2008 Queensland experienced the highest growth in engineering work done at 24.5%, whereas in the Territory engineering work done decreased by 38.3% (see Chart 2).

Despite recent declines, the value of engineering work done remains at relatively high levels in the Territory (Chart 1). Declining growth in engineering construction has been driven by the winding down of investment for the Alcan G3 refinery expansion, although engineering work done is expected to remain above long term trend levels in 2007-08, supported by continued work on the Darwin Waterfront Development and ENI's Blacktip project.

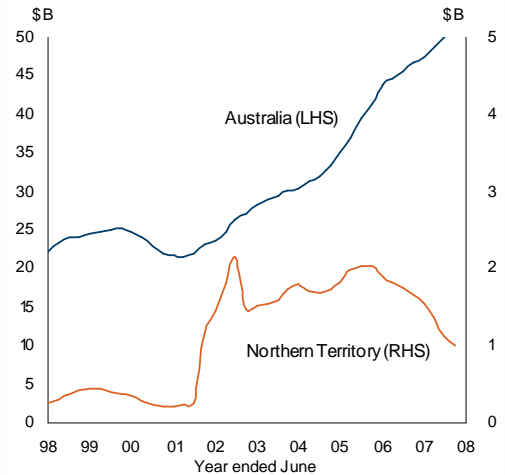
## Work Yet to be Done

In annual terms, engineering work yet to be done increased by 188.9% to \$916M in the Territory in the March quarter 2008 (see Chart 3).

The significant increase in the levels of engineering construction work yet to be done is likely to be associated with the commencement of the ENI Blacktip gas pipeline from Wadeye. Ongoing works associated with the Darwin Waterfront Development will continue to contribute to engineering construction activity.

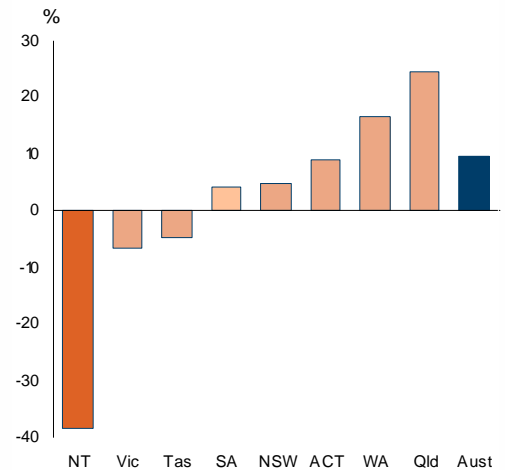
Any future increase of refining capacity at the LNG Plant at Wickham Point is also likely to substantially add to engineering construction activity in the medium term.

**Chart 1: Engineering Work Done**  
(moving annual total, chain volume)



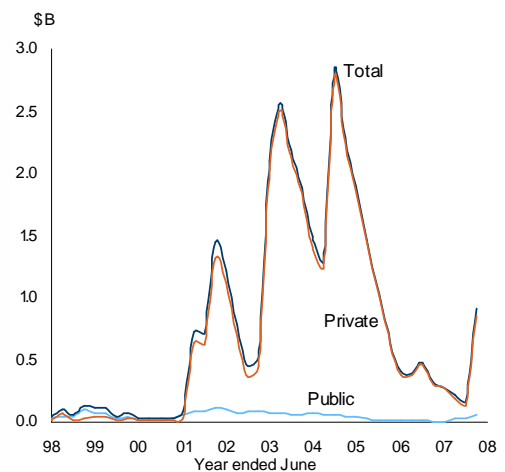
Source: ABS Cat. No. 8762.0

**Chart 2: Engineering Work Done**  
(year on year percentage change, chain volume)



Source: ABS Cat. No. 8762.0

**Chart 3: Territory Work Yet to be Done**  
(original, chain volume)



Source: ABS Cat. No. 8762.0

## Engineering Construction Work Done (\$M, chain volume)

	March Quarter		quarterly <sup>1</sup>	change	
	quarter	year to date		annual <sup>2</sup>	year on year <sup>3</sup>
<b>Northern Territory</b>					
original	251	1 014	26.1%	-28.6%	-38.3%
<i>public</i>	27	121	-24.7%	138.3%	-15.7%
<i>private</i>	226	892	38.2%	-33.9%	-40.8%
seasonally adj	257	1 015	25.6%	-29.5%	
trend	228	1 015	-1.9%	-37.9%	
<b>Australia</b>					
original	13 114	51 299	0.6%	11.7%	9.8%
<i>Public</i>	4 763	17 897	2.7%	14.5%	0.1%
<i>Private</i>	8 351	33 402	-0.6%	10.2%	15.7%
seasonally adj	13 812	51 690	7.2%	12.0%	
trend	13 546	51 689	3.7%	11.8%	

## Engineering Work Yet to be Done (\$M, original, chain volume)

	March Quarter		quarterly <sup>1</sup>	change	
	quarter	year to date		annual <sup>2</sup>	year on year <sup>3</sup>
<b>Northern Territory</b>					
	916		421.5	188.9%	
<i>Public</i>	56		94.9	701.9%	
<i>Private</i>	861		484.8	177.4%	
<b>Australia</b>					
	44 892		6.5	52.1%	
<i>Public</i>	12 768		5.8	42.4%	
<i>Private</i>	32 124		6.8	56.4%	

## Engineering Work Commenced (\$M, original, chain volume)

	March Quarter		quarterly <sup>1</sup>	change	
	quarter	year to date		annual <sup>2</sup>	year on year <sup>3</sup>
<b>Northern Territory</b>					
	757	1 259	408.5%	617.0%	3.8%
<i>Public</i>	46	157	60.2%	614.0%	5.7%
<i>Private</i>	711	1 103	492.8%	617.2%	3.6%
<b>Australia</b>					
	15 467	64 793	15.0%	10.0%	13.0%
<i>Public</i>	4 935	20 655	-11.5%	-12.6%	-5.1%
<i>Private</i>	10 531	44 137	33.8%	25.2%	24.1%

<sup>1</sup> compares the latest quarter with the previous quarter

<sup>2</sup> compares the latest quarter with the same quarter last year

<sup>3</sup> compares the 4 quarters up to and including the latest quarter with the previous 4 quarter period

Caution is advised when using monthly data for the Territory, which is often derived from small samples and highly volatile.

Source: ABS Cat. No. 8762.0, 8782.0

Although all due care has been exercised in the preparation of this material, no responsibility is accepted for any errors or omission.

Released: 1 July 2008

Next Release: 30 September 2008

