

## Engineering Construction Work Done

(value in the quarter, annual % change, s.a.)

Northern Territory	\$202M	↓	51.4%
Australia	\$12 760M	↑	9.5%

In annual terms, seasonally adjusted engineering construction work done in the Territory fell by 51.4% to \$202M in 2007, compared to an increase of 9.5% nationally.

In year on year terms, engineering construction work done decreased by 36.3% to \$1.1B in the Territory in 2007, primarily influenced by lower levels of construction activity in;

- 'heavy industry' which decreased by 49.3% to \$716M; and 'bridges, railways and harbours' which decreased by 22.1% to \$40M.
- Increases in engineering activity were reported in; 'roads, highways and subdivisions' which increased by 12.0% to \$116M; 'telecommunications' which increased by 30.5% to 109M; 'water storage and supply, sewerage and drainage' which increased by 41.6% to \$60M; 'recreation and other' which increased by 17.0% to \$43M; and 'electricity generation, transmission and pipelines' which increased by 17.0% to \$28M.
- In 2007 Queensland experienced the highest growth in engineering work done at 22.3%, whereas in the Territory engineering work done decreased by 36.3% (see Chart 2).

Despite recent declines, the value of engineering work done remains at relatively high levels in the Territory (Chart 1). Declining growth in engineering construction has been driven by the winding down of investment for the Alcan G3 refinery expansion, although engineering work done is expected to remain above long term trend levels in 2007-08, supported by continued work on the Darwin Waterfront Development and ENI's Blacktip project.

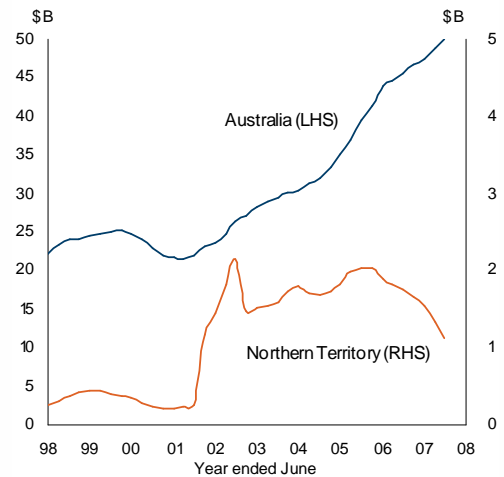
## Work Yet to be Done

In annual terms, engineering work yet to be done decreased by 63.6% to \$167M in the Territory (see Chart 3).

The decline reflects the completion of the Alcan G3 refinery expansion. However, work yet to be done continues to reflect ongoing projects including the Darwin Waterfront Development and ENI's Blacktip project.

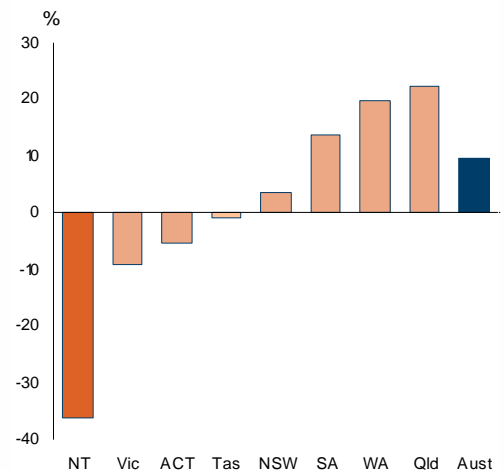
It is important to note that without new major projects of a similar scale to the Alcan G3 expansion, engineering work done in the Territory will moderate in the short term. However, significant levels of engineering work done will be associated with the commencement of the ENI gas pipeline from Wadeye and/or any future increase of refining capacity at the LNG Plant at Wickham Point.

**Chart 1: Engineering Work Done**  
(moving annual total, chain volume)



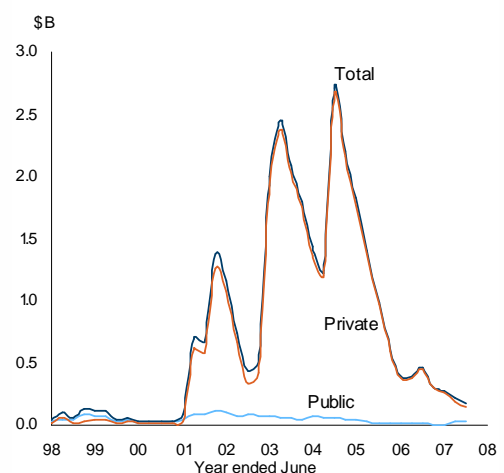
Source: ABS Cat. No. 8762.0

**Chart 2: Engineering Work Done**  
(year on year percentage change, chain volume)



Source: ABS Cat. No. 8762.0

**Chart 3: Territory Work Yet to be Done**  
(original, chain volume)



Source: ABS Cat. No. 8762.0

## Engineering Construction Work Done (\$M, chain volume)

	December Quarter		change		
	quarter	year to date	quarterly <sup>1</sup>	annual <sup>2</sup>	year on year <sup>3</sup>
<b>Northern Territory</b>					
original	199	1 114	-26.1%	-51.9%	-36.3%
<i>public</i>	35	105	3.6%	-7.1%	-37.6%
<i>private</i>	162	1 006	-30.9%	-57.1%	-36.6%
seasonally adj	202	1 125	-19.8%	-51.4%	
trend	205	1 132	-18.3%	-50.0%	
<b>Australia</b>					
original	13 039	49 923	8.7%	8.6%	9.6%
<i>Public</i>	4 637	17 293	14.8%	3.4%	-3.8%
<i>Private</i>	8 401	32 630	5.7%	11.7%	18.3%
seasonally adj	12 760	50 172	1.1%	9.5%	
trend	12 723	49 945	0.8%	8.4%	

## Engineering Work Yet to be Done (\$M, original, chain volume)

	December Quarter		change		
	quarter	year to date	quarterly <sup>1</sup>	annual <sup>2</sup>	year on year <sup>3</sup>
<b>Northern Territory</b>					
	174		-20.7	-63.6	
<i>Public</i>	28		-1.7	198.9	
<i>Private</i>	146		-23.6	-68.9	
<b>Australia</b>					
	41 793		0.2	54.2	
<i>Public</i>	11 971		4.6	61.3	
<i>Private</i>	29 822		-1.4	51.5	

## Engineering Work Commenced (\$M, original, chain volume)

	December Quarter		change		
	quarter	year to date	quarterly <sup>1</sup>	annual <sup>2</sup>	year on year <sup>3</sup>
<b>Northern Territory</b>					
	148	606	-32.2%	-71.1%	-48.6%
<i>Public</i>	29	116	-50.8%	-6.4%	-34.2%
<i>Private</i>	119	490	-25.3%	-75.2%	-51.1%
<b>Australia</b>					
	13 338	63 275	-45.1%	-7.2%	20.1%
<i>Public</i>	5 532	21 320	-1.2%	-11.1%	3.5%
<i>Private</i>	7 807	41 954	-58.3%	-4.2%	30.8%

<sup>1</sup> compares the latest quarter with the previous quarter

<sup>2</sup> compares the latest quarter with the same quarter last year

<sup>3</sup> compares the 4 quarters up to and including the latest quarter with the previous 4 quarter period

Caution is advised when using monthly data for the Territory, which is often derived from small samples and highly volatile.

Source: ABS Cat. No. 8762.0, 8782.0

Although all due care has been exercised in the preparation of this material, no responsibility is accepted for any errors or omission.

Released: 17 April 2008

Next Release: 1 July 2008

