

Total Construction Work Done

(Value in the quarter, annual % change, s.a.)

Northern Territory	\$373M	↓	36.0%
Australia	\$28 919M	↑	2.9%

In annual terms, seasonally adjusted construction work done decreased by 36.0% to \$373M in the Territory in the December quarter 2007, compared to a national increase of 2.9%. Total construction work done has declined by 25.9% to \$1.8B in the Territory in 2007 (see Chart 1). Nevertheless it remains well above long-term trend levels and the decline is consistent with the approaching completion of the Alcan G3 expansion at Gove (see Chart 2).

Residential Building Work Done

ABS does not report seasonally adjusted data for residential and non-residential building work done in the Territory. In annual terms, residential work done increased by 2.8% to \$98M in the December quarter 2007. In 2007, residential work done decreased by 1.9% to \$372M, driven primarily by a moderation in 'alterations & additions'. Over this period;

- Construction of 'new houses' increased by 11.0% to \$179M
- 'Other residential' (primarily units) decreased by 3.9% to \$140M
- 'Alterations & additions' decreased by 26.8% to \$53M

Non-residential Building Work Done

Non-residential building activity in small jurisdictions like the Territory tends to be volatile. In annual terms, non-residential building work done decreased by 0.1% to \$80M in the December quarter 2007. In 2007, non-residential building work done increased by 3.6% to \$317M. Over this period;

- Public sector work done decreased by 22.2% to \$82M
- Private sector work done increased by 17.2% to \$235M

Engineering Work Done

(Value in the quarter, annual % change, s.a.)

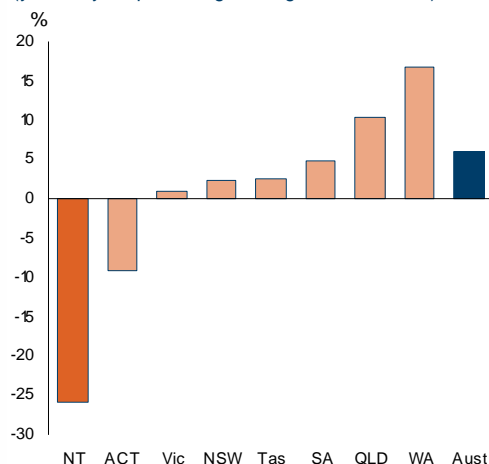
Northern Territory	\$202M	↓	51.4%
Australia	\$12 760M	↑	9.5%

In annual terms, seasonally adjusted engineering work done in the Territory decreased by 51.4% to \$202M in the December quarter 2007. In year on year terms engineering work done decreased by 36.3% to \$1.1B (see Chart 2).

Work Yet To Be Done

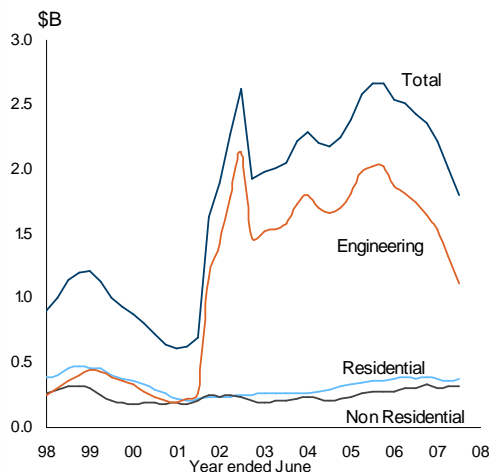
In annual terms, construction work yet to be done in the Territory decreased by 34.2% to \$511M (see Chart 3) in the December quarter 2007, largely reflecting the approaching completion of works related to the Alcan G3 refinery expansion.

Chart 1: Construction Work Done
(year on year percentage change, chain volume)



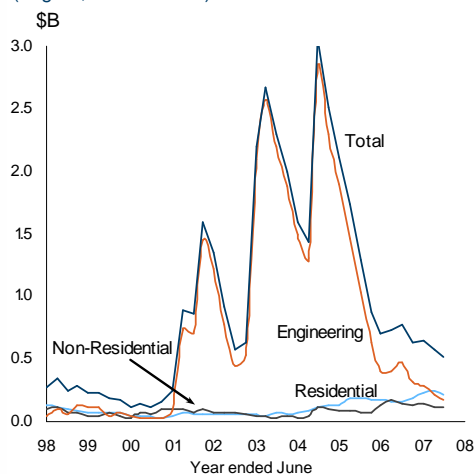
Source: ABS Cat. No. 8252.0, 8762.0

Chart 2: Territory Construction Work Done
(moving annual total, chain volume)



Source: ABS Cat. No. 8752.0, 8762.0

Chart 3: Territory Work Yet to be Done
(original, chain volume)



Source: ABS Cat. No. 8752.0, 8762.0, 8782.0.65

Construction Work Done (\$M, chain volume)

	December Quarter		change		
	quarter	year to date	quarterly ¹	annual ²	year on year ³
Northern Territory					
original	378	1 803	-17.4%	-36.0%	-25.9%
<i>residential building</i>	98	372	1.4%	2.8%	-1.9%
<i>non-res building</i>	80	317	-11.4%	-0.1%	3.6%
<i>engineering</i>	199	1 114	-26.1%	-51.9%	-36.3%
seasonally adj	373	1 817	-15.2%	-36.0%	
<i>building</i>	171	692	-9.2%	3.0%	
<i>engineering</i>	202	1 125	-19.8%	-51.4%	
Australia					
original	29 774	115 786	0.7%	2.5%	6.1%
<i>residential building</i>	9 881	39 130	-3.0%	-2.5%	1.4%
<i>non-res building</i>	6 854	26 733	-7.4%	-0.8%	7.0%
<i>engineering</i>	13 039	49 923	8.7%	8.6%	9.6%
seasonally adj	28 919	115 970	-2.0%	2.9%	
<i>building</i>	16 159	65 798	-4.3%	-1.8%	
<i>engineering</i>	12 760	50 172	1.1%	9.5%	

Construction Work Yet To Be Done (\$M, original, chain volume)

	December Quarter		change		
	quarter	year to date	quarterly ¹	annual ²	year on year ³
Northern Territory					
	511		-10.8%	-34.2%	
residential building	214		-12.5%	37.5%	
non-res building	122		11.5%	-14.6%	
engineering	176		-20.1%	-63.3%	
Australia					
	74 421		2.0%	33.1%	
residential building	17 595		4.8%	9.4%	
non-res building	14 640		1.4%	15.2%	
engineering	42 150		1.1%	55.5%	

¹ compares the latest quarter with the previous quarter

² compares the latest quarter with the same quarter last year

³ compares the 4 quarters up to and including the latest quarter with the previous 4 quarter period

Caution is advised when using monthly data for the Territory, which is often derived from small samples and highly volatile.

Source: ABS Cat. No. 8752.0, 8762.0, 8782.0.65.001

Although all due care has been exercised in the preparation of this material, no responsibility is accepted for any errors or omission.