

## Total Building Work Done (Value in the quarter, annual % change, s.a.)

Northern Territory	\$171M	↑	3.0%
Australia	\$16 159M	↓	1.8%

In annual terms, seasonally adjusted total building work done in the Territory increase by 3.0% to \$171M. Nationally, total building work done decreased by 1.8% to \$16.2B.

In year on year terms, total building work done increased by 0.6% to \$689M in the Territory in 2007 (see Chart 1), the third lowest growth of the jurisdictions (see Chart 2). Nationally, total building work done increased by 3.6% to \$65.9B.

## Residential Building Work Done

The ABS does not report seasonally adjusted data for residential and non-residential building work done in the Territory. Compared to December 2006, in original terms, residential building work done increased by 2.8% to \$98M in the Territory.

In year on year terms, Territory residential building activity decreased by 1.9% to \$372M in 2007.

Work done for;

- 'houses' increased by 11.0% (to \$179M);
- 'other residential' (primarily units) decreased by 3.9% (to \$140M);
- 'alterations and additions' decreased by 26.8% (to \$53M).

## Non-residential Building Work Done

Non-residential building activity in small jurisdictions like the Territory tends to be volatile. Compared to December 2006, non-residential building work done decreased by 0.1% to \$80M in original terms.

In year on year terms, non-residential building work done increased by 3.6% to \$317M in 2007. Work undertaken for the public sector decreased by 22.2% to \$82M.

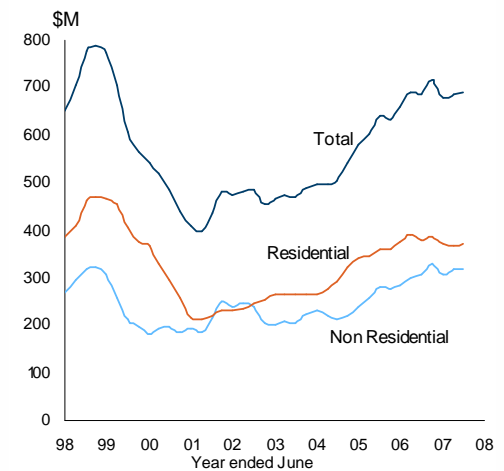
Non-residential work undertaken by the private sector increased by 17.2% to \$235M, primarily reflecting work done on the Darwin Waterfront Development.

## Building Work Yet to be Done

In annual original terms, building work yet to be done increased by 12.4% to \$335M in the Territory (see Chart 3). In the Territory;

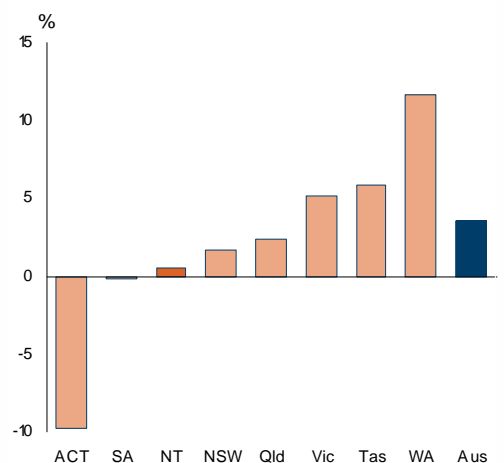
- Residential work yet to be done increased by 37.5% (to \$214M).
- Non-residential building work yet to be done decreased by 14.6% (to \$122M).

**Chart 1: Territory Building Work Done**  
(moving annual total, chain volume)



Source: ABS Cat. No. 8752.0

**Chart 2: Territory Building Work Done**  
(year on year percentage change, chain volume)



Source: ABS Cat. No. 8752.0

**Chart 3: Territory Work Yet to Be Done**  
(chain volume)



Source: ABS Cat. No. 8752.0, 8782.065.001

## Total Building (\$M, chain volume)

	December Quarter		change		
	quarter	year to date	quarterly <sup>1</sup>	annual <sup>2</sup>	year on year <sup>3</sup>
<b>Northern Territory</b>					
work done					
<i>original</i>	179	689	-4.8%	1.5%	0.6%
<i>seasonally adj</i>	171	692	-9.2%	3.0%	
<i>trend</i>	174	685	1.0%	-0.7%	
work yet to be done					
<i>original</i>	335		-5.0%	12.4%	
<b>Australia</b>					
work done					
<i>original</i>	16 735	65 863	-4.9%	-1.8%	3.6%
<i>seasonally adj</i>	16 159	65 798	-4.3%	-1.8%	
<i>trend</i>	16 391	65 824	-0.4%	0.4%	
work yet to be done					
<i>original</i>	32 271		3.2%	12.0%	

## Residential Building (\$M, original, chain volume)

	December Quarter		change		
	quarter	year to date	quarterly <sup>1</sup>	annual <sup>2</sup>	year on year <sup>3</sup>
<b>Northern Territory</b>	98	372	1.4%	2.8%	-1.9%
<i>houses</i>	44	179	-12.8%	8.0%	11.0%
<i>units</i>	41	140	15.5%	7.6%	-3.9%
<i>alterations &amp; addns.</i>	14	53	19.8%	-20.0%	-26.8%
<b>Australia</b>	9 881	39 130	-3.0%	-2.5%	1.4%
<i>houses</i>	5 888	23 274	-1.3%	1.1%	5.8%
<i>units</i>	2 307	9 643	-11.5%	-11.8%	-8.7%
<i>alterations &amp; addns.</i>	1 686	6 212	4.5%	-0.2%	3.0%

## Non-residential Building (\$M, original, chain volume)

	December Quarter		change		
	quarter	year to date	quarterly <sup>1</sup>	annual <sup>2</sup>	year on year <sup>3</sup>
<b>Northern Territory</b>	80	317	-11.4%	-0.1%	3.6%
<i>Private</i>	63	235	-11.1%	18.7%	17.2%
<i>Public</i>	17	82	-12.7%	-36.3%	-22.2%
<b>Australia</b>	6 854	26 733	-7.4%	-0.8%	7.0%
<i>Private</i>	5 390	20 966	-7.9%	1.5%	8.7%
<i>Public</i>	1 464	5 767	-5.6%	-8.6%	1.2%

<sup>1</sup> compares the latest quarter with the previous quarter

<sup>2</sup> compares the latest quarter with the same quarter last year

<sup>3</sup> compares the 4 quarters up to and including the latest quarter with the previous 4 quarter period

Caution is advised when using monthly data for the Territory, which is often derived from small samples and highly volatile.

Source: ABS Cat. No. 8752.0

Although all due care has been exercised in the preparation of this material, no responsibility is accepted for any errors or omission.

Released: 18 April 2008

Next Release: 15 July 2008

