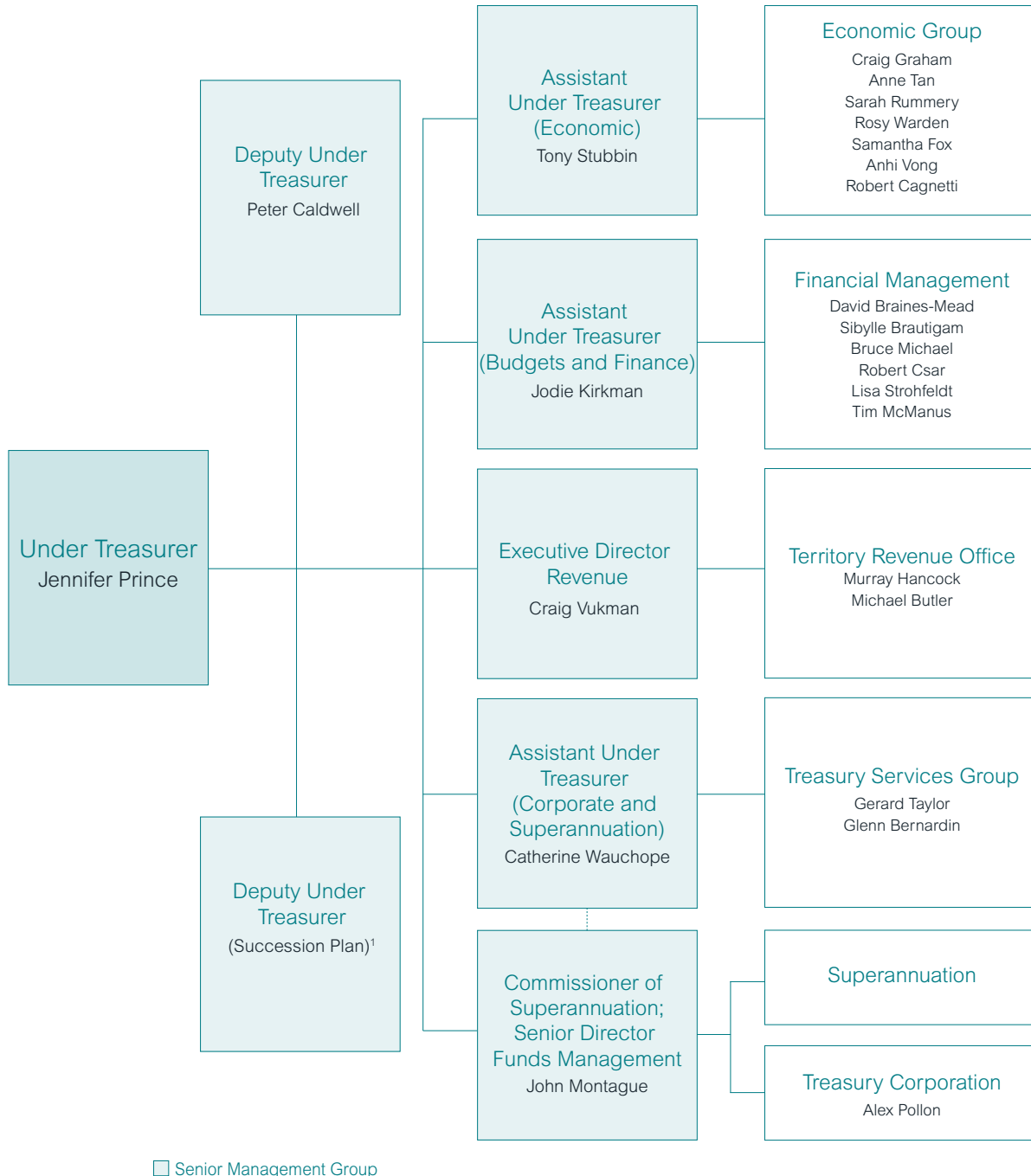


Treasury's Organisation Chart

Figure 1: Organisation Chart as at 30 September 2009



Directors on extended leave: Kathleen Clayden, Samantha Byrne and Vanessa Sutcliffe

1. In January 2009, Treasury commenced a two-year succession planning initiative providing staff with opportunities to work in different areas of Treasury or to act in more senior roles. Opportunities are being created over the two-year period, from the Deputy Under Treasurer level to middle management roles, one output group at a time, on a six-month rotational basis. Tony Stubbin and Craig Graham acted in the Deputy Under Treasurer and Assistant Under Treasurer (Economic) roles respectively for the six months ending 30 June 2009. Jodie Kirkman and David Braines-Mead have taken up the roles of Deputy Under Treasurer and Assistant Under Treasurer (Budgets and Finance) respectively for the six months from 1 July 2009.