

Summary

In December 2011, seasonally adjusted retail trade turnover in the Territory decreased by 2.6 per cent. Nationally, retail sales decreased by 0.1 per cent over the same period. In year on year terms, retail trade turnover in the Territory increased by 2.8 per cent to \$2.8B. Nationally, retail sales increased by 2.4 per cent to \$248.5B over the same period

Nominal Retail Trade Turnover

	AUST	NT
Monthly change (s.a.)	↓ 0.1%	↓ 2.6%
Annual change (s.a.)	↑ 2.6%	↑ 4.6%
Year on year change (original)	↑ 2.4%	↑ 2.8%

The following analysis is based on seasonally adjusted data unless stated otherwise.

Monthly Change

In December 2011, seasonally adjusted retail trade turnover in the Territory decreased by 2.6 per cent from November 2011 to \$229M (Chart 1). The decrease in retail trade turnover primarily reflects decreases in the following categories:

- 'cafes, restaurants and takeaway goods' (down 14.8 per cent); and
- 'household goods' (down 4.1 per cent).

The decrease was partly offset by an increase in 'pharmaceutical, cosmetic and toiletry' (up 5.9 per cent) and 'clothing, footwear and personal accessory' (up 3.4 per cent).

Annual Change

In annual terms, seasonally adjusted retail trade turnover in the Territory increased by 4.6 per cent in December 2011, the second highest growth rate of all the Jurisdictions, and behind Western Australia (up 10.0 per cent). Nationally, retail trade turnover increased by 2.6 per cent over the same period.

Year on Year Change (original)

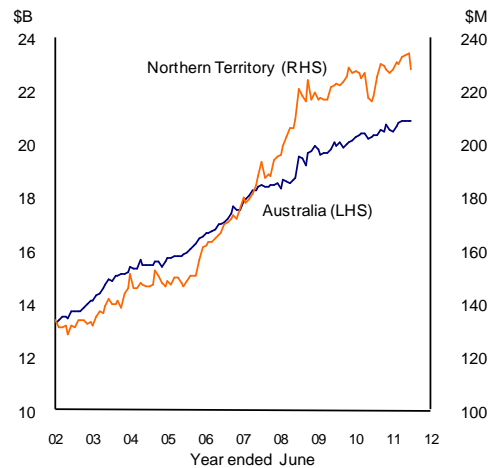
In the year to December quarter 2011, in original terms, retail trade turnover in the Territory increased by 2.8 per cent to \$2.8B (Chart 2). Nationally, retail trade turnover increased by 2.4 per cent to \$248.5B over the same period.

Inflation Adjusted Retail Trade Turnover

	AUST	NT
Quarterly change (s.a.)	↑ 0.4%	↑ 0.3%
Annual change (s.a.)	↑ 1.4%	↑ 5.3%
Year on year change (original)	↑ 0.5%	↑ 1.3%

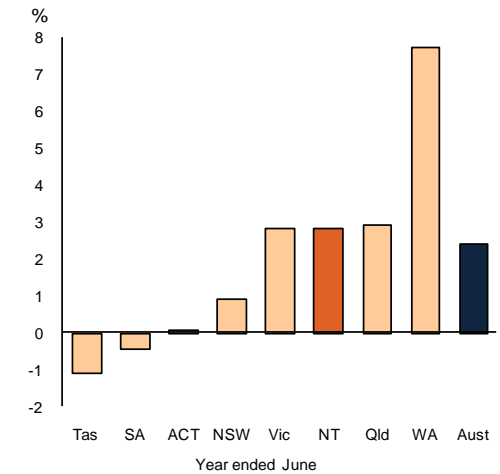
In the December quarter 2011, seasonally adjusted retail trade turnover increased by 0.3 per cent in the Territory. Nationally, retail trade turnover increased by 0.4 per cent over the same period. In year on year terms, growth in retail turnover in the Territory increased by 1.3 per cent, driven by strong growth in cafes, restaurants and takeaway goods. Nationally, retail turnover increased by 0.5 per cent in the same period (Chart 3).

Chart 1: Retail Turnover
(Monthly, current prices, s.a.)



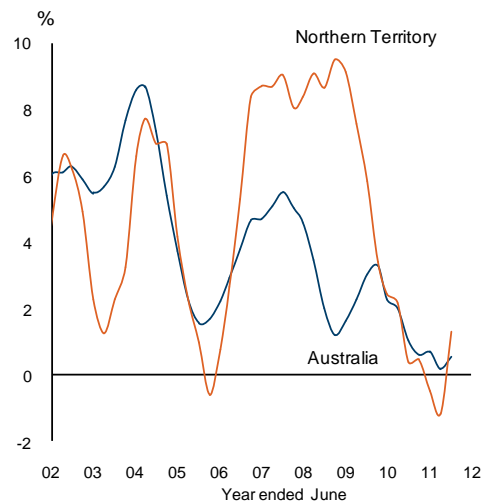
Source: ABS Cat. No. 8501.0

Chart 2: Retail Turnover
(Year on year percentage change, current prices)



Source: ABS Cat. No. 8501.0

Chart 3: Inflation Adjusted Retail Turnover
(Year on year percentage change)



Source: ABS Cat. No. 8501.0

Retail Turnover (current prices, \$M)

	December 2011		change		
	month	year to date	monthly ¹	annual ²	year on year ³
Northern Territory					
original	256	2 761	9.8%	4.8%	2.8%
seasonally adj ⁴	229	2 760	-2.6%	4.6%	
trend	233	2 757	0.0%	5.0%	
Australia					
original	27 276	248 483	25.2%	2.8%	2.4%
seasonally adj ⁴	20 885	248 364	-0.1%	2.6%	
trend	20 955	248 259	0.2%	3.0%	
Other jurisdictions (seasonally adj)					
New South Wales	6 368	75 806	-0.2%	0.9%	
Victoria	5 373	63 543	1.5%	2.6%	
Queensland	4 214	50 775	-1.4%	1.8%	
South Australia	1 452	17 373	-0.7%	1.5%	
Western Australia	2 438	28 381	-0.7%	10.0%	
Tasmania	433	5 173	-0.1%	0.9%	
ACT	378	4 551	1.8%	-1.0%	

Retail Turnover (real prices, \$M)

	December 2011		change		
	quarter	year to date	quarter ¹	annual ²	year on year ³
Northern Territory					
original	711	2 695	-1.7%	5.3%	1.3%
seasonally adj	678	2 697	0.3%	5.3%	
trend	678	2 688	0.2%	2.6%	
Australia					
original	68 168	241 747	15.2%	1.3%	0.5%
seasonally adj	60 773	241 697	0.4%	1.4%	
trend	60 750	241 664	0.4%	1.0%	

1 compares the latest month/quarter with the previous month/quarter

2 compares the latest month/quarter with the same month/quarter last year

3 compares the 12 months up to and including the latest month with the previous 12 month period

4 seasonal adjustment removes from a series influences that are systematic and calendar related

Caution is advised when using monthly data for the Territory, which is often derived from small samples and highly volatile.

Source: ABS Cat. No. 8501.0

Although all due care has been exercised in the preparation of this material, no responsibility is accepted for any errors or omission.