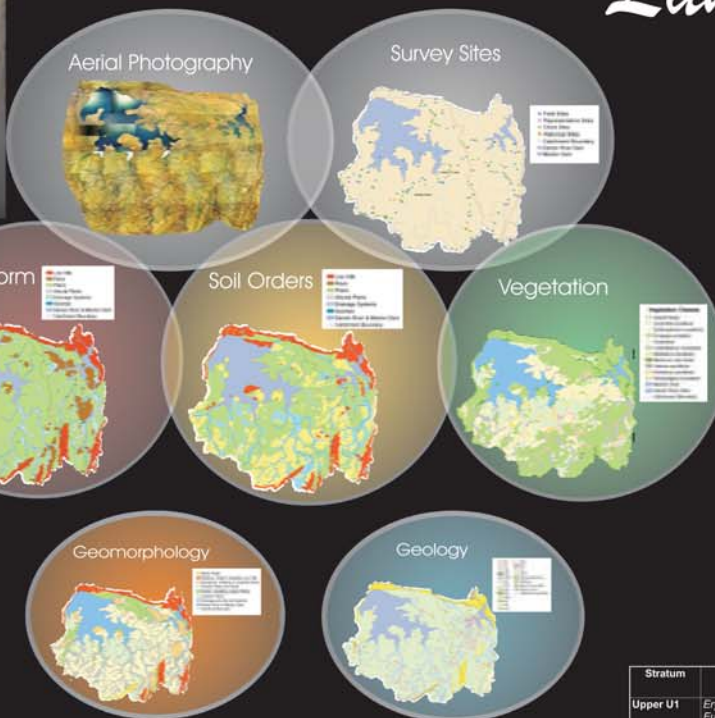


LAND RESOURCES OF DARWIN RIVER & MANTON DAM CATCHMENTS 2004

An Evolution of Value Adding to Spatial Data

Land Unit Description

36 Land Units were described
Example:



LAND UNIT 8a
LANDFORM: Plains
No. of SITES: 7
AREA: 13.9 square km

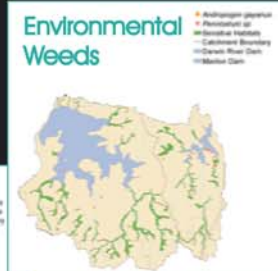
LANDFORM:
GENERAL DESCRIPTION: Gently undulating upland plains
SLOPES: 0-1.5%
PARENT MATERIAL: Q. sediments
ROCK OUTCROP: 0-3%
SURFACE GRAVEL: 0-5%
DRAINAGE: Well
RUNOFF: Moderate

VEGETATION:
DOMINANT VEGETATION: *Erythrophleum chlorostachys*, *Eucalyptus tetrodonta* mid high woodland with a mixed grassland understorey
STRUCTURE: Mid high open woodland and woodland

SOIL:
DOMINANT SOIL: Red Kandosols
COMMON SOIL CHARACTERISTICS:
Surface Texture Class - Clayey Loam
Surface Soil Gravels - <10%
Field Surface pH - 5.5-6.5
Subsoil Texture Class - Clayey
Subsoil Gravels - >40%
Field Subsoil pH - 5.5-6.5
Soil Colour - Red
Soil Depth - 1.0-1.5m
Other Soils Described - Nil

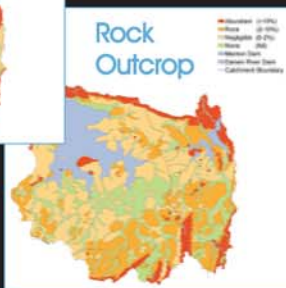
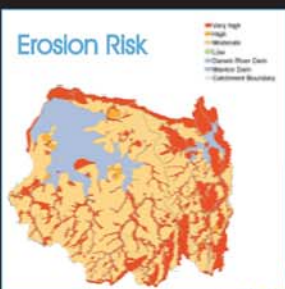
LAND EVALUATION:
WELL DRAINED: Water removed from soil readily after rainfall events
DEEP SOILS: 1.0-1.5m
GENTLE SLOPES: 1-3%
NEGLECTIBLE ROCK OUTCROP: <2%
MODERATE EROSION RISK: Any disturbance will require erosion and sediment control planning

Stratum	Frequent Dominant Species	Other Common Species
Upper U1	<i>Erythrophleum chlorostachys</i> <i>Eucalyptus tetrodonta</i>	<i>Eucalyptus miniata</i>
Mid M1	<i>Livistona humilis</i>	<i>Cycas armstrongii</i> <i>Petalostigma pubescens</i>
Ground G1		<i>Eriachne trisetata</i> <i>Chrysopogon fallax</i>

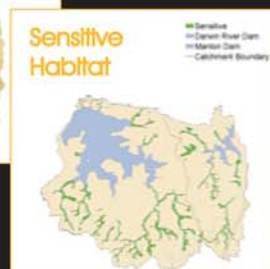


Land Capability

Point Data



Habitat Information



Jason Hill & Donna Lewis
Land & Vegetation
Natural Systems
Conservation & Natural Resources
Dept. Infrastructure Planning & Environment