

**EXIT ART  
CONTEMPORARY  
YOUTH ART OF  
NORTHERN TERRITORY  
YEAR TWELVE STUDENTS  
TWO THOUSAND  
AND EIGHT I**





Daniel Batten, Casuarina Senior College, *Portrait of Cathy*  
Winner Minister's Choice Award 2008 (detail)



# CHIEF MINISTER'S MESSAGE

Each year *Exit Art* provides a showcase for the best of Northern Territory student talent, representing all areas of the visual arts, including ceramics, photography, sculpture and multimedia.

To be included in *Exit Art* students have stopped, thought and, most importantly, felt. All the exhibitors have overcome frustration, wrestled with original ideas and, through this process, found enormous satisfaction.

Creating a work of art involves the head, the hand and the heart. Students will have discovered that art is transforming. It reveals a person's concerns and experiences. The artwork in this exhibition reflects the aspirations of students and the perceptions they have of themselves, those around them and their world.

*Exit Art* provides an opportunity for all of us to acquire a different perspective through fresh, younger eyes. We stop for a moment and ponder and, when we do this, we connect and are given insight that we may never have considered.

Work of this calibre requires a commitment to excellence by students and, as in past years, the artworks also reflect the dedication of teachers. Their encouragement, knowledge and assistance have inspired students to produce another outstanding and original collection.

Congratulations to every student who has contributed to this refreshing and provocative exhibition. Best wishes in your future creative endeavours.

The Hon Paul Henderson MLA  
Chief Minister  
Minister for Education and Training





**JOSHUA AULD**  
NORTHERN TERRITORY OPEN EDUCATION CENTRE  
DIGITAL IMAGE PROJECTION

**THE DEATH THAT BROUGHT LIFE**

This artwork was influenced by my faith in Jesus Christ, by his death and resurrection, and that while I was a sinner Christ died to bring me life.

I created my artwork on a computer because I have always had a fascination with the way the physical world can be recreated using digital technology.

# RODRIGO BARÚA

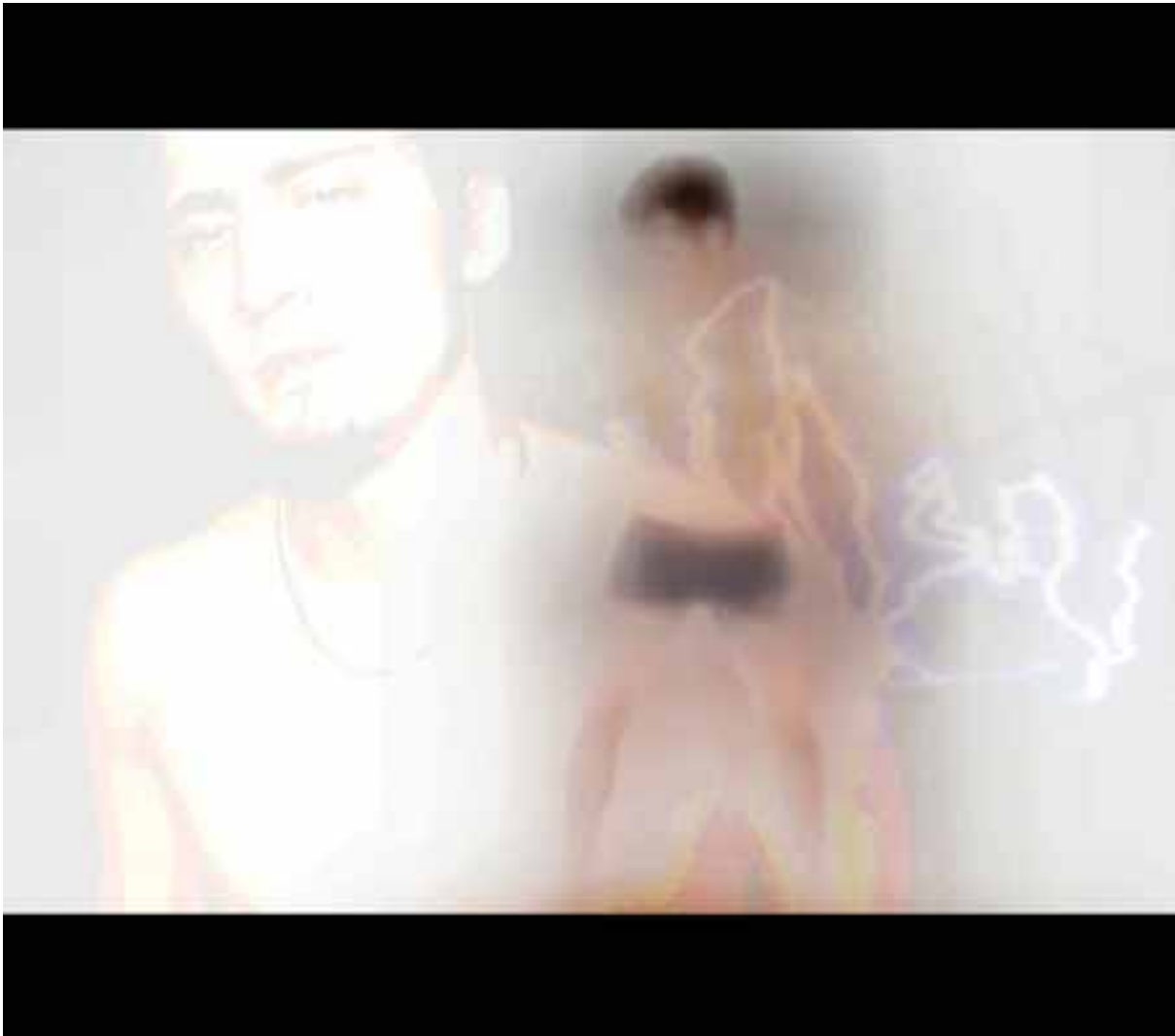
DARWIN HIGH SCHOOL

VIDEO

7 MINS 2 SECS (STILL IMAGES SHOWN)

## THIS IS ME

This artwork explores my identity, exposing it to the audience. The first shots explore my physical self – hands, body and legs. These are aspects that everyone can see. I then begin to peel my skin back to expose what it is that makes me who I am. I left peeling my hands back until the end because I believe that my hands' ability to create is what really makes me who I am. Hands are the medium that transforms the idea into reality.





**ALEXANDRA BLUNDELL**  
KATHERINE HIGH SCHOOL  
SYNTHETIC POLYMER PAINT ON CANVAS  
150 X 120 CM

**529 SIMPLE SHAPES**

This painting began as a sketch on grid paper in my Year 10 maths book. I loved how the shapes worked with each other so I expanded the concept and added colour. To mix and balance the work was a definite challenge.

# BELINDA BROOKER

TAMINMIN HIGH SCHOOL

CERAMIC

59 X 59 CM (OVERALL)

## ELEMENTAL

I am inspired by the natural world. *Elemental* consists of four tiles representing the four elements: water, earth, fire and wind. To add to the theme each tile has the Japanese symbol for the elements and they are in a specific order so when they are placed together they are a single unit.





## CATHERINE BROWNE

DARWIN HIGH SCHOOL  
 SYNTHETIC POLYMER PAINT ON CANVAS  
 100 X 185 CM (OVERALL)

ENI MERIT AWARD

### CATHCULATOR



I first became the Cathculator in Year 3 during literacy and numeracy week. My dad made the Cathculator costume, which was a sandwich board with number buttons on it. That and my love of maths have inspired me to create this series of self-portraits entitled *Cathculator*. The artwork reflects my curves, the angle of my face, size of my physical being and the proportions of my body. Earlier this year my mum finally threw out the Cathculator. In memory of my childhood and maths, I have taken the Cathculator from the sandwich board to the canvas.

**JESSICA COOPER**  
CASUARINA SENIOR COLLEGE  
DIGITAL IMAGES ON  
TRANSPARENT FILM  
88 X 103 CM (OVERALL)

**LIGHT AND MOVEMENT**

I was interested in the works of Frank Le Petit in which he used light and shutter speed on his camera to capture movement. I took his idea a few steps further by taking multiple shots and printing them on transparent film. I then layered the multiple images into shadow boxes and lit them. I believe that the images show how the world is always in motion; sometimes chaotic, always beautiful.





**SAMANTHA DALY**  
KORMILDA COLLEGE  
MIXED MEDIA ON CANVAS  
118 X 175 CM (OVERALL)

**PORCELLANITE ROCK**

This work explores the colours and textures of porcellanite rock. Each canvas can be viewed individually or the four canvases can be viewed as a whole, just as each rock or pebble can be viewed singly or as part of a larger vista. My preoccupation with texture and colour is inspired by Sandra Leveson.



## JUSTINE DUGGIE

TENNANT CREEK HIGH SCHOOL

LINOPRINTS AND REACTIVE SUN-DYE ON COTTON

240 X 110 CM, 234 X 113 CM, 224 X 113 CM, 228 X 113 CM

### UNTITLED

These textile lengths are the results of my exploration into the methods and materials aspect of the craft course. I experimented with methods of surface enhancement on fabric. The three geometric prints are linoprints, one with the addition of a palm frond stencil. The fourth length of fabric is a sun-dye resist print using cut paper and leaves.





**CASSANDRA GAMBLE**  
**CASUARINA SENIOR COLLEGE**  
**CERAMIC AND GLASS MOSAIC**  
**78 X 42 X 35 CM**

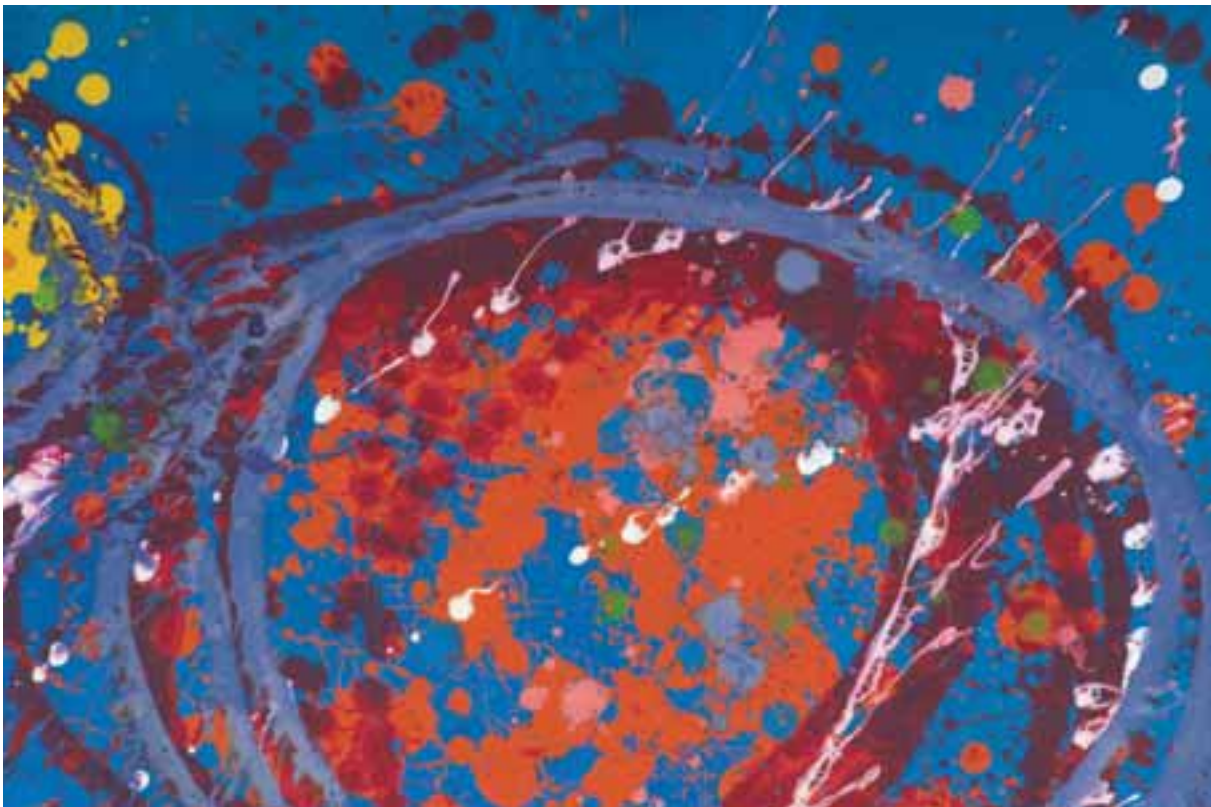
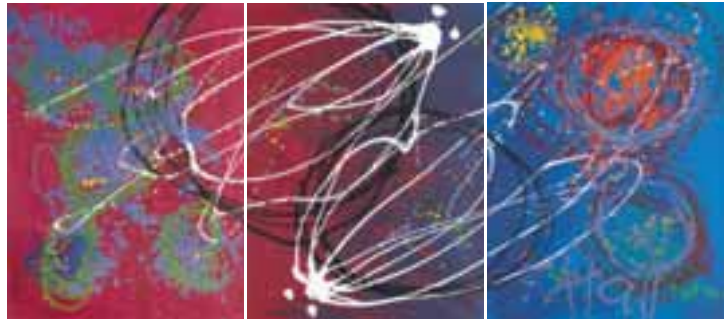
**MATERNAL GIFT**

From the Venus of Willendorf to Madonna Ciccone, the female form has been celebrated as an object of beauty and fertility. My inspiration began with a dream in which I was sculpting a form with mosaics. I researched sculptures with reference to gods and goddesses and realised that I wanted to create a form that was inspired by a pregnant female. I feel that my sculpture conveys the image of motherhood – the shimmer of the bright blue mosaic tiles represents the joy of pregnancy and motherhood and the mirrors reflect the viewer and remind us that we have all been part of the birth process. We may not be parents but we have all been children, given the precious gift of life.

**SARAH HALL**  
CENTRALIAN SENIOR SECONDARY COLLEGE  
SYNTHETIC POLYMER PAINT ON CANVAS  
122 X 273 CM (OVERALL)

**THINK LOCAL, ACT GLOBAL**

I used the artwork as an opportunity to expand my artistic abilities and take risks by trying new things. The main influences were Dale Chihuly's *Float Triptych* and a photo of John Butler sitting in front of a wall emblazoned with the sign 'Think Local, Act Global'. The artwork is a celebration of the positive contributions humans have made, as well as acknowledging poverty and the current economic crisis. The intention is to make an impact and to encourage the viewer to think local, act global.





**LINZI HAMLYN**  
**KATHERINE HIGH SCHOOL**  
**SYNTHETIC POLYMER PAINT ON BOARD**  
**160 X 250 CM (OVERALL)**

**TESSINA**

The paintings are enlargements of a photo that I changed in three different ways. We used to be friends, but she chose a different path. A photograph never grows old. You and I change, people change all through the months and years, but a photograph always remains the same. Well, I've got the memories and the pictures. I guess that's all that is left. So much for 'friends forever'.

**JESSY HAYES**  
KORMILDA COLLEGE  
SYNTHETIC POLYMER PAINT  
AND BITUMEN ON CANVAS  
152 X 120 CM

**MY JOURNEY**

*My Journey* represents shapes and textures recorded during an evening walk near my home. I chose to incorporate the shapes, textures and colours of the walk into a work that is representative of bigger journeys and experiences that fade and disappear as you move through life, leaving behind layers of conscious and unconscious overlapping memories.





## JESSY HAYES

KORMILDA COLLEGE  
DIGITAL PRINTS ON CARD,  
AND DIGITAL PRINT ON FOAM-CORE BOARD  
9 X 9 X 9 CM (EACH BOX)  
30 X 42 CM, 30 X 42 CM, 30 X 42 CM (NOT SHOWN)

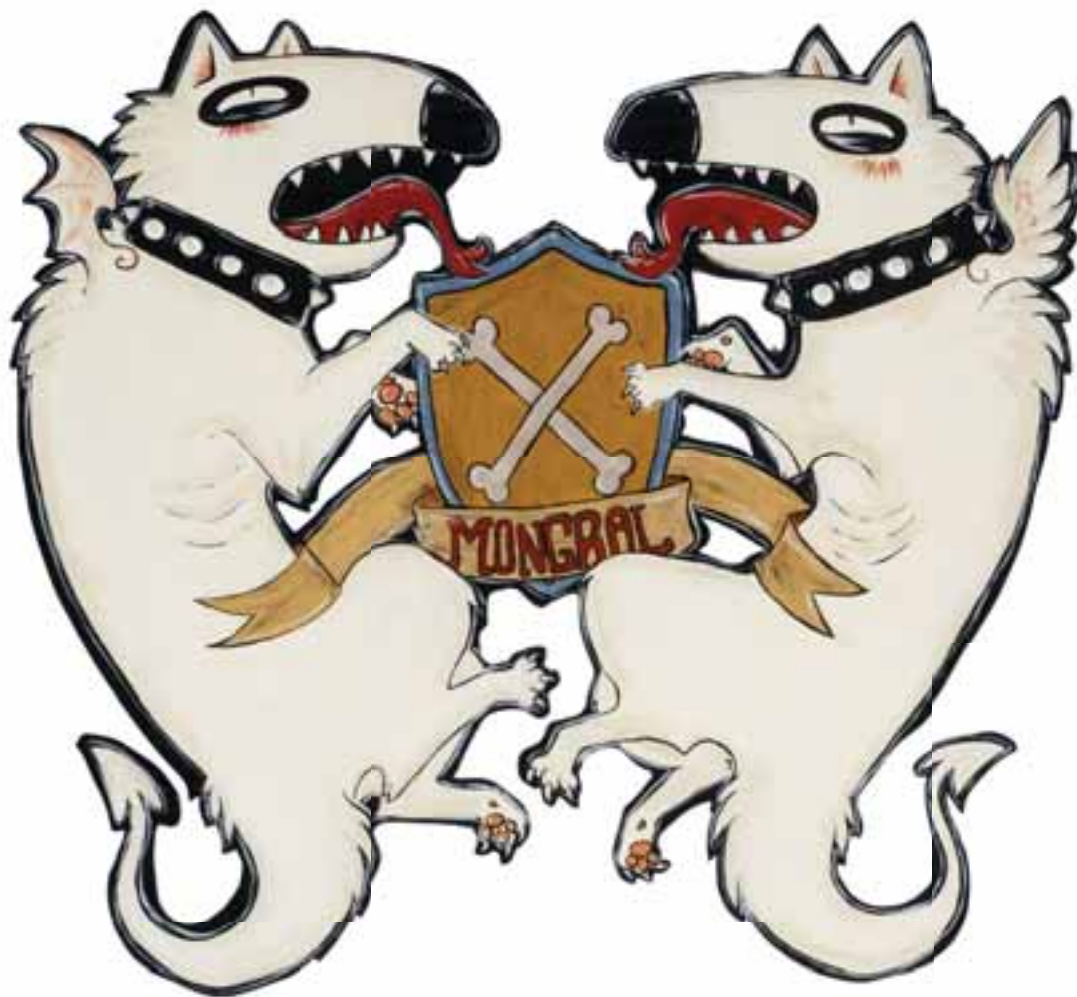
### CONFECTIONERY BOXES

The challenge for this project was to create a packaging design that could be adapted for a range of confectionery. The inspiration for the design came from watching a child play with building blocks. I think that children would find the packaging appealing and collectable, encouraging repeat purchase. This idea really appealed to me because of the potential for subliminal communication to the target demographic (parents and young children) through confectionery packaging, which linked notions of education, learning and play.

**NATASHA HECKENBERG**  
CENTRALIAN SENIOR SECONDARY COLLEGE  
GOUACHE AND SYNTHETIC POLYMER PAINT  
ON BOARD  
92 X 100 CM

### **MONGRAL SHIELD**

In this artwork I wanted to portray the dog in an unusual fashion. Dogs are often depicted as elegant beasts – as wolves or noble-looking pets. I wanted to show the other end of the canine spectrum. Strays and crossbreeds are often overlooked and I wanted to paint some mongrels – the kind of dog you'd find on a station, in a fighting ring or in a town camp. Ugly and inbred, these dogs have their own devilish charm.





**OLIVIA HEGGIE**  
**CENTRALIAN SENIOR SECONDARY COLLEGE**  
**DIGITAL PRINTS**  
**180 X 180 CM (OVERALL)**

**LIFE IS A ZOO INSIDE A JUNGLE**

Through a series of images I wanted to explore one single crazy moment on the city streets; the visual statement, sound and movement that echo and resound in the darkest of alleys and the underground world that lies beneath Melbourne's street lights. Graffiti is a major aspect of urban life, an expression of talent and a bold statement; an interaction with the city's occupants. This is a documentary style of photography that expresses the urban jungle.

## JULIE HOLDER

NORTHERN TERRITORY OPEN  
EDUCATION CENTRE  
DIGITAL PRINTS, WIRE, FIBRE,  
PAPERBARK AND CARD  
81 X 245 X 10 CM  
(DETAIL SHOWN)

### BUDDLEIA (BUTTERFLY BUSH)

The artwork depicts the final  
stage of the butterfly life cycle  
and has been constructed  
from scanned tropical leaves.





**RHANELLA HOLT**  
TENNANT CREEK HIGH SCHOOL  
CERAMIC  
36 X 32 CM DIAM., 25 X 21 CM DIAM.,  
18 X 16 CM DIAM., 18 X 17 CM DIAM.

**ARIZONA-INSPIRED POTS**

These pots have been inspired by the Native Americans of Arizona. Patterns on the pots are my own but the forms have been inspired by Pueblo pottery.

## OWEN INNES

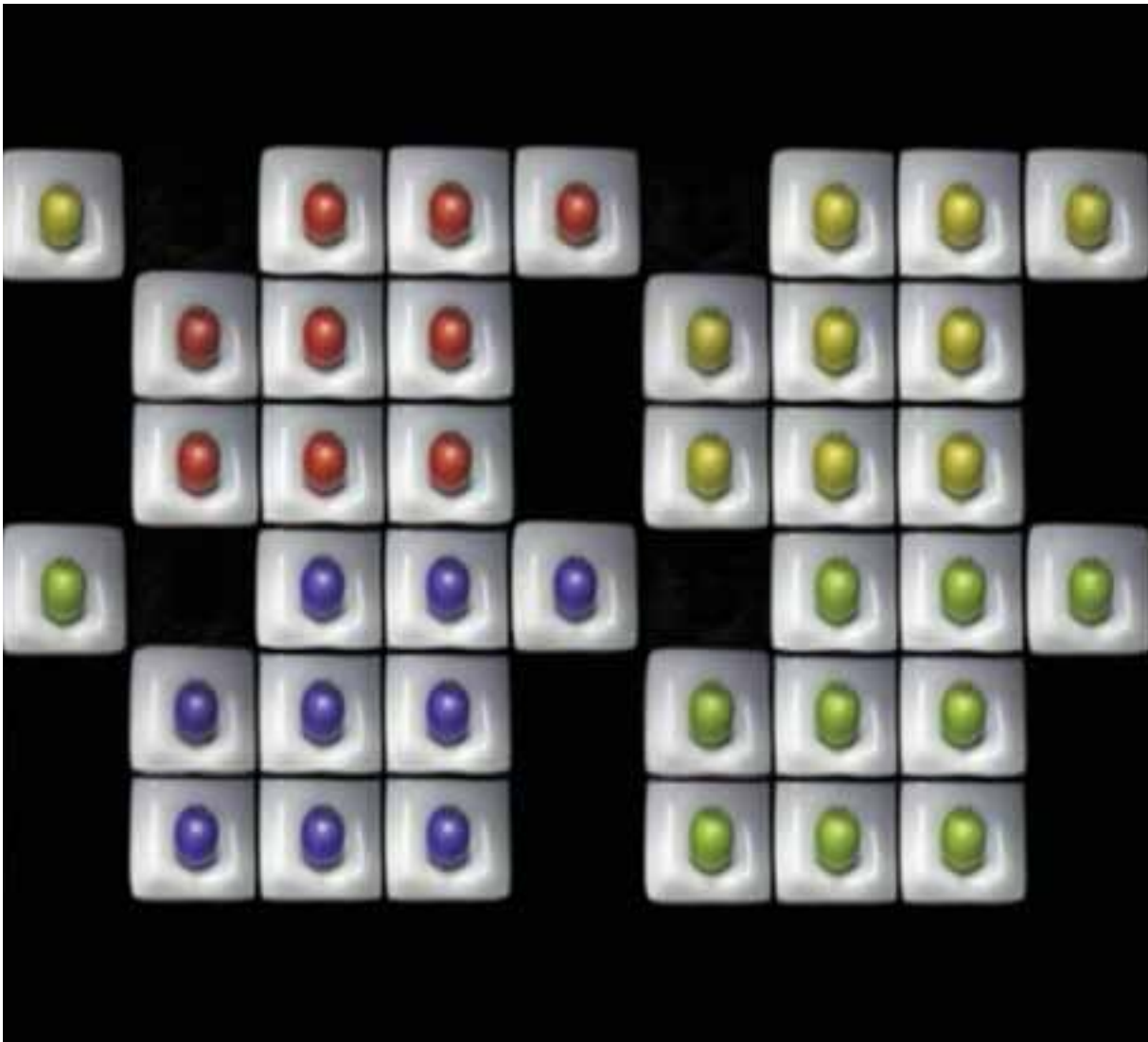
DARWIN HIGH SCHOOL

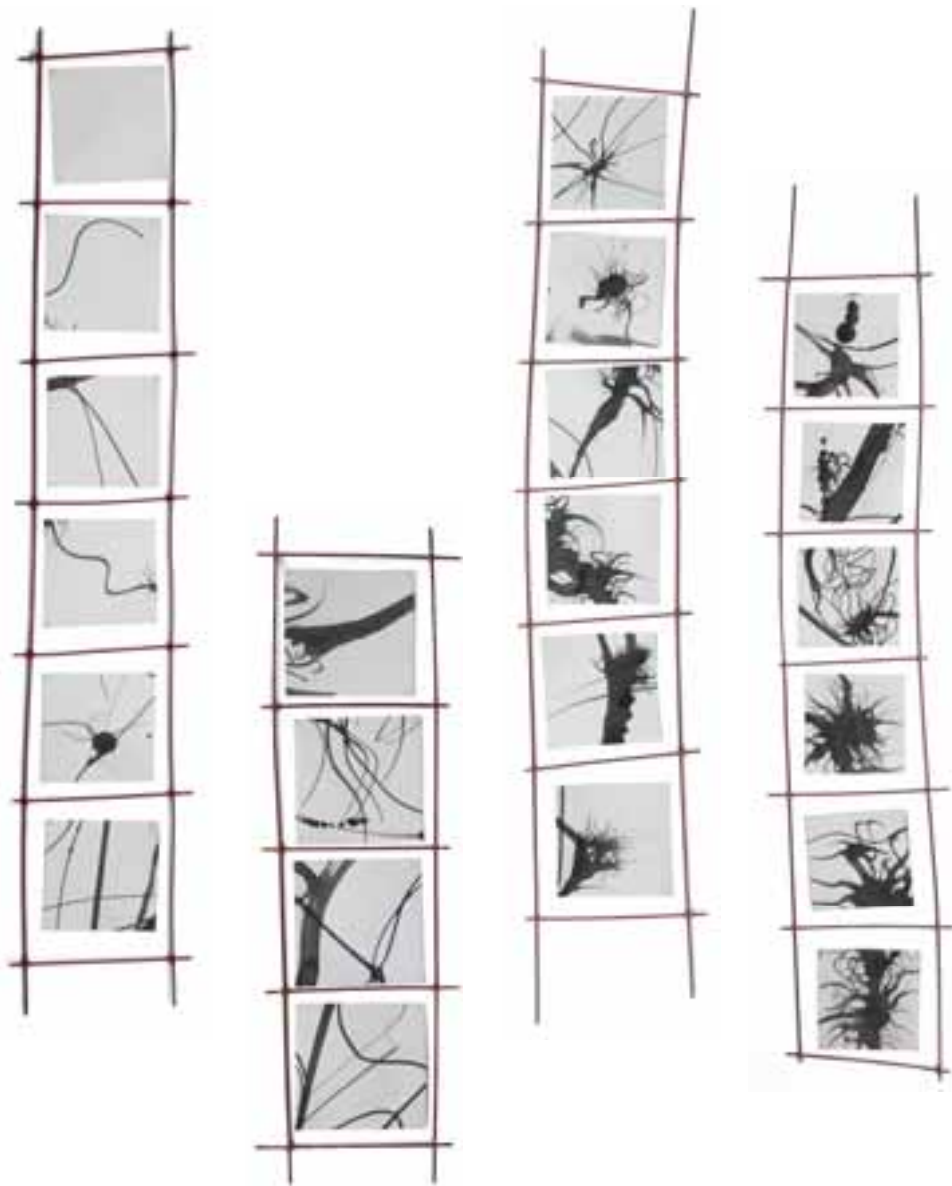
VIDEO

1 MIN 42 SECS (STILL IMAGE SHOWN)

### RETROSCOPE

This film explores the artistic ideas and styles that have been controversial in the past. Appropriation, colour, retro styling and popular arts are the key components of the film.





## KARYNA JANSONS

ST PHILIPS COLLEGE  
INK ON PAPER, COPPER WIRE AND PLASTIC  
123 X 103 X 10 CM (OVERALL; DETAIL SHOWN)

### SANITY?

'I am overtired of the great harvest  
I myself desired.'  
Robert Frost

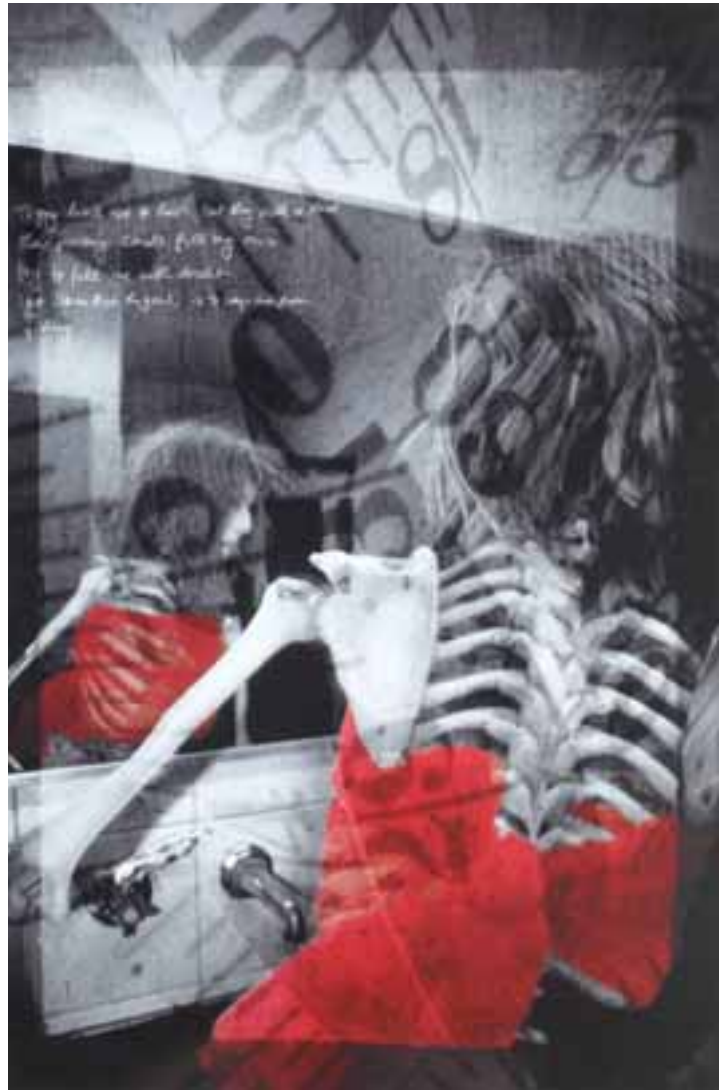
# KARYNA JANSONS

ST PHILIPS COLLEGE  
PERFORMANCE RECORDED ON VIDEO  
3 MINS 26 SECS (STILL IMAGE SHOWN)

## BIRTHDAY SUIT

A celebration of the male figure  
in a humorous context.





**KISSILYN LABIS**  
CENTRALIAN SENIOR SECONDARY COLLEGE  
DIGITAL PRINTS  
68 X 78 CM (OVERALL)

**I DON'T CARE WHAT THEY SAY,  
I WANT TO BE BEAUTIFUL**

My image is about a young girl expressing her feelings about her body image. Though she does not realise it, she is suffering from an eating disorder. She is so drawn to her warped view that she will go as far as anorexia to fulfil her desire to be 'beautiful'. I used a skeleton to portray my theme because it's almost a realistic expression of a person suffering from anorexia.

## KRISTIE LANGFORD

DARWIN HIGH SCHOOL

RESIN

1.5 X 8.5 CM DIAM., 1.5 X 8.5 CM DIAM.,  
1 X 8.5 CM DIAM., 1 X 8.5 CM DIAM. (BANGLES),  
0.5 X 2 X 4.5 CM, 1.6 X 1.6 X 1.6 CM,  
0.6 X 4.5 X 8.5 CM (EARRINGS),  
0.6 X 4.5 X 2.3 CM, 0.6 X 12 X 26 CM (NECKLACES),  
2.5 X 2.5 X 2.5 CM (RING)  
(NOT ALL SHOWN)

### LOOSE THREADS

'If everyone gives one thread,  
the poor person will have a shirt.'  
Russian proverb





**MICHAEL LAVERY**  
O'LOUGHLIN CATHOLIC COLLEGE  
DIGITAL PRINTS, CD AND DIGITAL ANIMATION  
(DIMENSIONS VARIABLE)

**LIFE**

*Life* is essentially a product for those looking to purchase a child. The idea behind the product arose from the media attention surrounding controversial social and ethical boundaries being pushed, regarding stem-cell research and cloning. The product draws on new technologies and pitches them to an ever-growing market of people who either do not want the inconvenience of pregnancy or are unable to have children. On purchase, customers receive an information booklet and CD in a custom-made box.

The product has several identifying design elements. The smoke/swirl used as a logo subtly reinforces the product's links to stem-cell research, as the repetitious swirl relates to DNA. The choice between blue and pink represents the choice between a male or female child.

**PATRICK MCLAREN**  
**CASUARINA SENIOR COLLEGE**  
**WWW.ORCHIDSATNIGHTCLIFF.**  
**NET.AU/INDEX.HTML**  
**DIGITAL PRINTS**

**'ORCHIDS AT NIGHTCLIFF' WEBSITE**

My product is a website for a new hospitality business, 'Orchids at Nightcliff'. The website advertises services and provides a communication system for enquiries. The website was created using the following criteria:

- Professional
- Usable
- Clear
- Informative
- Classy





**LAN NGUYEN**  
TAMINMIN HIGH SCHOOL  
WOOD, GLASS AND LEAD  
79 X 105 CM (OVERALL)  
**STAINED-GLASS FRAMES  
FOR TWO MIRRORS**



## KEISHA PALMER

CENTRALIAN SENIOR SECONDARY COLLEGE

SYNTHETIC POLYMER PAINT ON CORRUGATED IRON AND FOUND OBJECTS  
70 X 74 CM, 8 CM DIAM., 9.5 X 6.5 X 3 CM, 7.5 X 7.5 CM, 5 CM DIAM., 6 CM DIAM.

### LIVING RUST

This artwork explores my cultural heritage showing my immediate family members, my sister and mum and me. Landscape is at the heart of my cultural connection. The rust has significance – it is living and decaying at one and the same time. Similarities can be drawn with Aboriginal culture today – language and culture are decaying but they also have strength and vitality. The earthy colour of the rust connects to the land, the iron land, forgotten part of the land; its form changes, weathered and moulded by the environment. Aboriginal nomads move on, leaving rusty iron behind like the visible remnants of their language and culture.





**SIAN PARANY**  
**CASUARINA SENIOR COLLEGE**  
**INK AND WATERCOLOUR**  
**WASH ON PAPER**  
**138 X 197.5 CM (OVERALL)**  
**ZOMBI ARISTOCRACY**

I was inspired by the idea of juxtaposing two opposing ideas to create interest within an artwork.



## **BEN PARSLOW**

**DARWIN HIGH SCHOOL**

**VIDEO**

**32 SECONDS (STILL IMAGE SHOWN)**

**ENI EXCELLENCE AWARD**

### **LOCK AND LOAD**

This clip portrays the relationship between man and machine; the human body and the rifle. I wanted to show how man can control his own body to work in synchrony with machines, like rifles, which have their own mechanical structure. Unusual mechanical sounds, although not the real sounds, can be heard on the backing track. The sound effects strangely complement the action. Harmony is created between man and machine.





**ANDREW PEARCE**  
**TENNANT CREEK HIGH SCHOOL**  
**OIL ON BOARD**  
**120 X 250 CM (OVERALL)**

**PERFECTION**

This artwork represents my feelings and emotions about my disability. The colours I use symbolise different aspects – the black represents the shadows around me, the yellow the rising sun, the white and red my flesh and blood, and the blue skin tone gives depth. The simple lines reflect the exactness of my situation and limitations that have created determination.



**ANDREW PEARCE**  
TENNANT CREEK HIGH SCHOOL  
MIXED MEDIA ON BOARD  
80 X 135 CM (OVERALL)

**CONFLICTED WINGS**

This artwork is the direct reflection of my anguish and the pain that I struggle with in my home life - the struggles I have personally, the dark emotions and the freedom of letting go. The birds express the way that life pulls us towards the darkness or the light - to conflict us or liberate us. The latex has been used to create an interesting background surface.





**PETER POLLOCK**  
DARWIN HIGH SCHOOL  
DIGITAL PRINT  
59 X 42 CM

**GIANT VS. THE SUN**

*Giant vs. The Sun* is a contemporary gig poster for Browns Mart, a performance space in Darwin. The illustration was inspired by the music of the band, Giant vs. The Sun.

**ELYSIA RANKING**  
**PALMERSTON HIGH SCHOOL**  
**DIGITAL PRINTS**  
**54 X 160 CM**

**LIFE**

This piece shows the movement and life of people and animals. The centre image is made up of macro shots of nature. Together these three images show that no matter how chaotic humans and animals may be, nature is always there to calm and balance things.





**RENEE ROBERTS**  
CASUARINA SENIOR COLLEGE  
SYNTHETIC POLYMER PAINT ON WOOD  
190 X 198 X 143 CM (OVERALL)

**SURF AND TURF**

This artwork is about people trafficking in Eastern Europe.

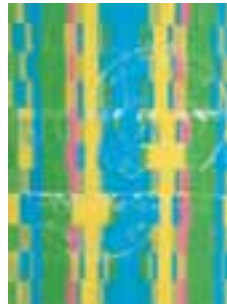


**EMILY ROGERS**  
CASUARINA SENIOR COLLEGE  
WATERCOLOUR ON PAPER  
59 X 157 CM (OVERALL)

**EMERGING CULTURE**

In my first major I wanted to create artworks that were inspired by my time spent in Nhulunbuy where I observed how the local Indigenous people's culture, while still strong, was merging more and more with aspects of Western culture. I wanted my artworks to depict the ways in which Indigenous people were utilising technology and to create images that, perhaps, break down perceptions of life in contemporary Aboriginal communities. Culture is not frozen in time; rather it is constantly evolving. The three images are reflective of the ways that Indigenous people are bridging the gap between the traditional and the contemporary world.





**NATASHA SCANNELLA**  
CASUARINA SENIOR COLLEGE;  
NORTHERN TERRITORY OPEN  
EDUCATION CENTRE  
RECYCLED PLASTIC BAGS  
30 X 25 CM, 38 X 28 CM, 40 X 30 CM,  
37 X 27 CM

**THE SHOPPING STRIP**

This series of artworks was created by weaving strips of used plastic bags to create abstract grids of colour and text.

**ERIC SCHINDLER**  
ST PHILIPS COLLEGE  
DIGITAL STOP-MOTION FILM  
5 MINS 6 SECS (STILL IMAGE  
SHOWN)

**PACING THE CAGE**

A stop-motion film comprised of 3,000 to 4,000 still images: a visual journey of forward movement that builds up momentum as it reaches the top of the MacDonnell Ranges - yet ends where it began. It is a battle of desire being stunted by reality.





**CINDY SCHULTZ**  
**CENTRALIAN SENIOR SECONDARY**  
**COLLEGE**  
**DIGITAL PRINT**  
**40 X 99 CM**

**EARTH BOUND**

*Earth Bound* is about the spiritual echo of the land – a ghost of times past. She is earth bound, unable to escape the bonds of memory. She has emerged from the earth and is watching and waiting; a silent listener. She sends messages of understanding and belief.



**HANNAH SHEPPARD**  
PALMERSTON HIGH SCHOOL  
DIGITAL PRINT ON ACRYLIC SHEET,  
BOARD AND LIGHTS  
122 X 67 X 15 CM

**THE JOURNEY OF LIGHT**

I was told so many times that it couldn't be done, that no one could enlarge something so small to the size I wanted. I didn't quit. I kept trying and finally I was able to achieve what I wanted. A stained-glass window is usually associated with churches, which are about belief. I believed I could get what I wanted and I was able to make it happen.





**HANNAH SHEPPARD**  
PALMERSTON HIGH SCHOOL  
FIMO POLYMER CLAY, TEXTILE,  
WOOD AND METAL  
24 X 21.5 X 4.5 CM

**TOUCH ME**

I had this beautiful design made from Fimo clay, which looked like a stained-glass window but which fitted in the palm of my hand. It felt so smooth to touch – I wanted to share it with others.

# AMY SIERAKOWSKI

DARWIN HIGH SCHOOL  
SYNTHETIC POLYMER PAINT AND LAZERTRAN PAPER ON CANVAS  
55 X 110 CM (OVERALL)

ENI MERIT AWARD

## NATURE VS. NURTURE

I've always been very interested in science, particularly chemistry and biology, as well as art. I wanted to explore the relationship between the genetic and environmental influences on a person's life. I wanted to look at the extent to which people are able to choose who they are. The bottom panels are images of a cellular process that involves the division of genetic material and eventually produces sex cells. The portraits are of friends who are important influences in my life and also representative of the idea that even friendships could be influenced, to some degree, by genetics.





**TANEE SSKO**  
ST PHILIPS COLLEGE  
PASTEL ON PAPER  
300 X 247 CM (OVERALL)

**TIME IS OF THE ESSENCE**

This artwork was influenced by Salvador Dali's *Persistence of Memory* but the idea of time and life developed from Einstein's theory of relativity. The theory of relativity is about how situations and emotions can cause individuals to perceive the passing of time differently. Hence the saying 'Time flies when you're having fun'.



**RIAN SMIT**  
**CASUARINA SENIOR COLLEGE**  
**MIXED MEDIA ON BOARD**  
**176 X 123.5 X 5 CM**

**ENI EXCELLENCE AWARD**

**THE YOUNG ADULT**

This painting is about the distorted view of beauty in today's society. As a young adult there is an enormous amount of pressure to conform to these ideals. The artwork also explores the ugly side of beauty: 'the jitters after a hard night out', where the sex, drugs and music dominate. This concept was inspired by a photo of me in the ribbon dress – portraying a young adult after partying. I was influenced by the artists Imants Tillers and Hundertwasser.





**CATRIONA TAIT**  
ST PHILIPS COLLEGE  
COPPER WIRE, WOOD AND SAND  
220 X 160 X 140 CM

**MECHANICAL BOTANICAL**

Those with the most power restrict the environment in which we live but we also restrict ourselves. The wire tree represents the constraints and restrictions we place on everything around us.

# NOAH THOMPSON

CASUARINA SENIOR COLLEGE

LEGO BRICKS

42 X 32 X 18 CM

## CATASTROPHIC PLAN

This large sculpture is made of red Lego. I heard Nick Cave's song 'Red Right Hand' and decided I was going to build a red hand, but the left hand instead of right. You can apply whatever meaning you like to it: socialism, considered the ideology of the Left from whence the red of communism originates; the left side of the brain is the creative side; and blah, blah, blah. But I don't really care for all that pretension.





**TIFFANY WEIGAND**  
**KORMILDA COLLEGE**  
**OIL, WAX MEDIUM AND DYE ON CANVAS**  
**42 X 170 CM**

**WILDFLOWERS**

Although my initial inspiration was Tim Maguire's large-scale macro images, my media experimentation led to discoveries using wax and dye to create an etched image with batik-like crackles. Overlaying led to this composition, which explores shapes and forms in nature.

## CIELLA WILLIAMS

NORTHERN TERRITORY OPEN EDUCATION CENTRE  
SYNTHETIC POLYMER PAINT ON PAPIER-MACHE ON BOARD  
100 X 142 X 22 CM

ENI MERIT AWARD

### WE ARE

This artwork is about how  
my family are my saints,  
my saviours, and my faith.





**DZENITA ZENDELI**  
TENNANT CREEK HIGH SCHOOL  
SYNTHETIC POLYMER PAINT ON BOARD  
81 X 260 CM (OVERALL)

**CIRCULAR MOTIONS**

The overlapping lines in this artwork represent life and the progression of time; they also reflect the overlay of graffitied lines that appear on walls and buildings in big cities.



# OTHER MATERIALS SELECTED FOR *EXIT ART*

## **PRACTICAL EXTENSION FOLIO**

**CATHERINE BROWNE**

**DARWIN HIGH SCHOOL**

**ELVINA FARKAS**

**OUR LADY OF THE SACRED HEART COLLEGE ALICE SPRINGS**

**OWEN INNES**

**DARWIN HIGH SCHOOL**

**KRISTIE LANGFORD**

**DARWIN HIGH SCHOOL**

**BEN PARSLow**

**DARWIN HIGH SCHOOL**

**ELYSIA RANKING**

**PALMERSTON HIGH SCHOOL**

**EMILY ROGERS**

**CASUARINA SENIOR COLLEGE**

**AMY SIERAKOWSKI**

**DARWIN HIGH SCHOOL**

**RIAN SMIT**

**CASUARINA SENIOR COLLEGE**

**MONICA THOMSEN**

**MARRARA CHRISTIAN COLLEGE**

**SIANNE VAN ABKOUDE**

**ST PHILIPS COLLEGE**

**DZENITA ZENDELI**

**TENNANT CREEK HIGH SCHOOL**

## **METHODS AND MATERIALS FOLIO**

<b>KIRSTY IMMS</b>	<b>CENTRALIAN SENIOR SECONDARY COLLEGE</b>
<b>DAVID MCDOWELL</b>	<b>TENNANT CREEK HIGH SCHOOL</b>
<b>CINDY SCHULTZ</b>	<b>CENTRALIAN SENIOR SECONDARY COLLEGE</b>
<b>STUART THOMAS</b>	<b>CENTRALIAN SENIOR SECONDARY COLLEGE</b>
<b>KATE RYAN</b>	<b>DARWIN HIGH SCHOOL</b>

## **INVESTIGATIVE STUDIES**

<b>SHAHN GORDON</b>	<b>CASUARINA SENIOR COLLEGE</b>
<b>KRISTIE LANGFORD</b>	<b>DARWIN HIGH SCHOOL</b>
<b>JUSTINE MANLEY</b>	<b>CASUARINA SENIOR COLLEGE</b>
<b>WENDY NGUYEN</b>	<b>TAMINMIN HIGH SCHOOL</b>
<b>BEN PARSLOW</b>	<b>DARWIN HIGH SCHOOL</b>
<b>CINDY SCHULTZ</b>	<b>CENTRALIAN SENIOR SECONDARY COLLEGE</b>



An initiative of the  
**Northern Territory  
Government**



In cooperation with



© Northern Territory Government 2009

This publication is copyright. Apart from any fair dealing for the purpose of private study, research, criticism, or review as permitted under the *Copyright Act 1968*, no part of this publication or its images can be reproduced, stored in a retrieval system or transmitted in any form, electronic, photocopying, mechanical, recording or otherwise without prior permission.

The views and opinions expressed by artists within this document do not necessarily reflect those of the Northern Territory Government or represent Northern Territory Government Policy.





EXIT ART  
CONTEMPORARY  
YOUTH ART OF  
NORTHERN TERRITORY  
YEAR TWELVE STUDENTS  
TWO THOUSAND  
AND EIGHT ■