



Northern
Territory
Government

DEPARTMENT OF
NATURAL RESOURCES, ENVIRONMENT, THE ARTS AND SPORT



An inventory of sites of international and national significance for biodiversity values in the Northern Territory



Kata Tjuta, Central Australia (Photo: Chris Pavey)

Biodiversity Conservation Unit

Division of Environment, Heritage and the Arts
Department of Natural Resources, Environment, The Arts and Sport
PO Box 496
Palmerston NT 0831

© Northern Territory of Australia, 2009

ISBN 978-1-921519-19-2

Please cite this report as:

Harrison, L., McGuire, L., Ward, S., Fisher, A., Pavey, C., Fegan, M. and Lynch, B. (2009). An inventory of sites of international and national significance for biodiversity values in the Northern Territory. Department of Natural Resources, Environment, The Arts and Sport, Darwin, NT.

This report is accompanied by another report:

Ward, S. and Harrison, L. (2009). Recognising sites of conservation significance for biodiversity values in the Northern Territory. Department of Natural Resources, Environment, The Arts and Sport, Darwin, NT.

Funded by the Natural Heritage Trust and the Northern Territory Government under the Integrated Natural Resource Management Plan for the Northern Territory (Project 2005/067).



Australian Government



TABLE OF CONTENTS

Site information papers index.....	iv
Summary.....	1
1. Introduction.....	1
Acknowledgements.....	2
2. Site information papers.....	5
3. Definitions and data sources.....	322
4. References.....	324
5. Contributors.....	343
6. Abbreviations and Glossary.....	344
7. Photo index.....	347

LIST OF TABLES

Table 1. Sources of data used in the preparation of maps for each site of conservation significance in the NT.....	323
--------------------------------------------------------------------------------------------------------------------	-----

LIST OF FIGURES

Figure 1. Location of sites of conservation significance in the NT.....	2
Figure 2. Location of sites of conservation significance in the NT: western Top End portion.....	3

Site information papers index

Site Name	page	Site Name	page
Adelaide River coastal floodplain	5	Karinga Creek paleodrainage system	162
Alligator Rivers coastal floodplains	11	Keep River area	167
Andado and Snake Creek lakes	17	Lake Amadeus and Lake Neale	172
Anmatyerr North	22	Lake Lewis and surrounds	176
Anson Bay and associated coastal floodplains	26	Lake MacKay	180
Arafura Swamp	31	Lake Surprise and the Lander River floodout swamps	184
Beddome Range and Wilyunpa Tablelands	36	Lake Sylvester system	189
Birrindudu wetlands	41	Lake Woods	195
Blue Mud Bay and associated coastal floodplains	46	Legune coastal floodplain	201
Borrooloola area	51	Limmen Bight and associated coastal floodplains	205
Boucaut Bay and associated coastal floodplains	55	Maningrida coastal habitats	210
Buckingham Bay and associated coastal floodplains	59	Mary River coastal floodplain	214
Castlereagh Bay and associated islands	63	Mataranka thermal pools	219
Chambers Bay	69	McArthur River coastal floodplain	223
Cleland Hills and surrounds	73	Mount Conner and surrounds	229
Cobourg Peninsula	77	Mount Liebig and surrounds	233
Croker Island group	82	Mud Hut Swamp	237
Daly River middle reaches	86	Newhaven Lakes	241
Darwin Harbour	91	Nongra Lake	246
Davenport and Murchison Ranges	96	Petermann Ranges and surrounds	250
Dulcie Range and surrounds	100	Rodinga Range and adjacent ranges	254
Elcho Island group	105	Shoal Bay	258
Elkedra River floodout swamps	109	Sir Edward Pellew island group	263
Eva Downs Swamp	113	South-west Tanami Desert	268
Finniss River coastal floodplain	117	Tarrabool Lake	273
Fog Bay	121	Tiwi Islands	278
Frew River floodout swamps	125	Uluru and surrounds	284
George Gill Range and surrounds	129	Victoria River middle reaches and Gregory area	289
Gove Peninsula and north-east Arnhem coast	134	Waterhouse Range	294
Greater MacDonnell Ranges	140	Wessel and English Company island groups	298
Groote Eylandt group	147	Western Arnhem Plateau	303
Howard sand plains	152	Wollogorang and China Wall sandstone ranges	309
Hyland Bay and associated coastal floodplains	157	Wood Duck Swamp	313
		Yinberrie Hills	317

Summary

Sixty-seven sites have been identified as having international or national significance for biodiversity conservation in the NT (Ward and Harrison 2009). This report provides a compilation of information papers for these 67 sites. The information papers include details of the location and site boundaries, data supporting significance ratings for five conservation values (threatened species, endemic species, wildlife aggregations, wetlands and flora), plus information on other environmental values, management issues and management information. The report also includes information on the sources of data used in producing the maps, a full list of references for all the site information papers and a glossary.

1. Introduction

Purpose: This inventory is intended to highlight the most important sites for biodiversity in the Northern Territory. It provides a snapshot of current knowledge about the sites and summarises the key scientific data and information that justify our ratings of the sites as internationally or nationally significant for biodiversity, relative to specific criteria.

This inventory is intended to make information on these sites accessible to landholders and other stakeholders to help them plan for and manage their lands. It will provide a platform for developing a strategic approach to off-reserve conservation initiatives and priorities in the future.

This inventory is accompanied by another report “*Recognising Sites of Conservation Significance for biodiversity values in the Northern Territory*” (Ward and Harrison 2009) which details the methods used for identifying the sites, delineating site boundaries and assessing the sites against detailed criteria.

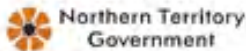
Time-frame: This compilation represents the state of knowledge of the sites in 2008. The inventory will become dated as new research and projects are conducted. To ensure this inventory remains a valuable resource, it should be updated every five to ten years.

Scope: This inventory is based entirely on ecological values and does not consider cultural, geological, social, heritage or other values. The scope of the inventory is restricted to terrestrial areas in the Northern Territory and mostly excludes consideration of marine values and issues. In coastal areas of the NT, the separation between marine and terrestrial values becomes blurred, and marine issues are included where they clearly have implications for terrestrial areas (such as marine turtles nesting on sandy beaches).

There are 67 entries in the inventory and the location and identity of each of the sites is shown in Figures 1 and 2. At sites located near or adjacent to borders with other states, important habitats highlighted within the sites may extend into neighbouring states, although the inventory includes information only on areas within the NT.

Format: Sites are presented in alphabetical order and a standard format is used for each site. A colour satellite image provides context and is accompanied by a brief ecological description of the site. This is followed by a map of the site, and then by a table summarising key site-specific data and information. The table includes a section for each of the five criteria against which the sites were assessed, plus

SITES of CONSERVATION SIGNIFICANCE in the NT



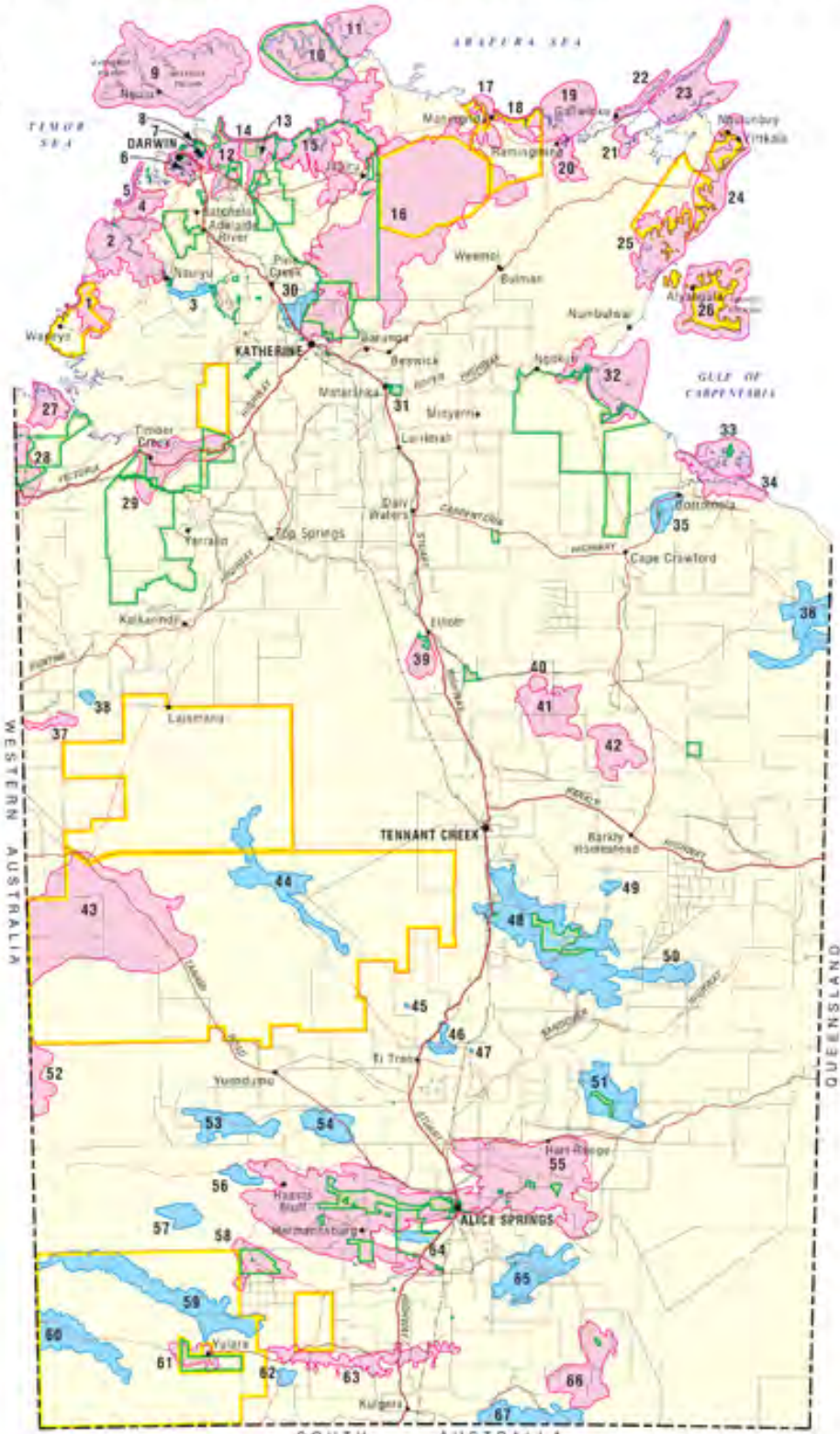
RECOGNISING SITES OF CONSERVATION SIGNIFICANCE FOR BIODIVERSITY VALUES IN THE NORTHERN TERRITORY

Site of International Significance

Site of National Significance

- 1 Hyland Bay and associated coastal floodplains
- 2 Anson Bay and associated coastal floodplains
- 3 Daly River middle reaches
- 4 Finniss River coastal floodplain
- 5 Fog Bay
- 6 Darwin Harbour
- 7 Howard sand plains
- 8 Shoal Bay
- 9 Tier Islands
- 10 Cobourg Peninsula
- 11 Croker Island group
- 12 Adelaide River coastal floodplain
- 13 Mary River coastal floodplain
- 14 Chambers Bay
- 15 Alligator Rivers coastal floodplains
- 16 Western Arnhem Plateau
- 17 Maningrida coastal habitats
- 18 Boucaut Bay and associated coastal floodplains
- 19 Castlereagh Bay and associated islands
- 20 Arafura Swamp
- 21 Buckingham Bay and associated coastal floodplains
- 22 Elcho Island group
- 23 Wessel and English Company island groups
- 24 Dove Peninsula and north-east Arnhem coast
- 25 Blue Mud Bay and associated coastal floodplains
- 26 Groote Eylandt group
- 27 Legune coastal floodplain
- 28 Keep River area
- 29 Victoria River middle reaches and Gregory area
- 30 Yimbarra Hills
- 31 Mataranka thermal pools
- 32 Limmen Bight and associated coastal floodplains
- 33 Sir Edward Pellew island group
- 34 McArthur River coastal floodplain
- 35 Borroloola area
- 36 Wollogorang and China Wall sandstone ranges
- 37 Birrinidui wetlands
- 38 Mongra Lake
- 39 Lake Woods
- 40 Eva Downs Swamp
- 41 Tarrabool Lake
- 42 Lake Sylvester system
- 43 South-west Tanami Desert
- 44 Lake Surprise and the Lander River floodout swamps
- 45 Mud Hut Swamp
- 46 Anmatyerri North
- 47 Wood Duck Swamp
- 48 Davenport and Murchison Ranges
- 49 Frew River floodout swamps
- 50 Elkedra River floodout swamps
- 51 Dulcie Range and surrounds
- 52 Lake MacKay
- 53 Newhaven Lakes
- 54 Lake Lewis and surrounds
- 55 Greater MacDonnell Ranges
- 56 Mount Liebig and surrounds
- 57 Gibland Hills and surrounds
- 58 George Gill Range and surrounds
- 59 Lake Amadeus and Lake Neale
- 60 Petermann Ranges and surrounds
- 61 Uluru and surrounds
- 62 Mount Conner and surrounds
- 63 Karinga Creek paleodrainage system
- 64 Waterhouse Range
- 65 Rodinga Range and adjacent ranges
- 66 Anadeo and Snake Creek lakes
- 67 Bidjara Range and Wilyupia Tablelands

Park/Reserve
 Indigenous Protected Area
 Declared or Consultation Project



Scale: 0 50 100 150 200 km
 Projection: Lambert Conformal Conic
 Standard Parallels 23°22'00"S and 12°48'00"S
 Horizontal Datum: GDA 94
 Prepared by: Spatial Data & Mapping Unit
 Land & Water Division, Department of Natural Resources,
 Environment, The Arts and Sport (NRE/TAS) November 2008
 File Reference: 37-Sites-Significance_34
 © Northern Territory of Australia
 The Northern Territory of Australia does not warrant that the product or any part of it is correct or complete and will not be liable for any loss, damage or injury suffered by any person as a result of its inaccuracy or incompleteness.

Figure 1. Location of sites of conservation significance in the NT

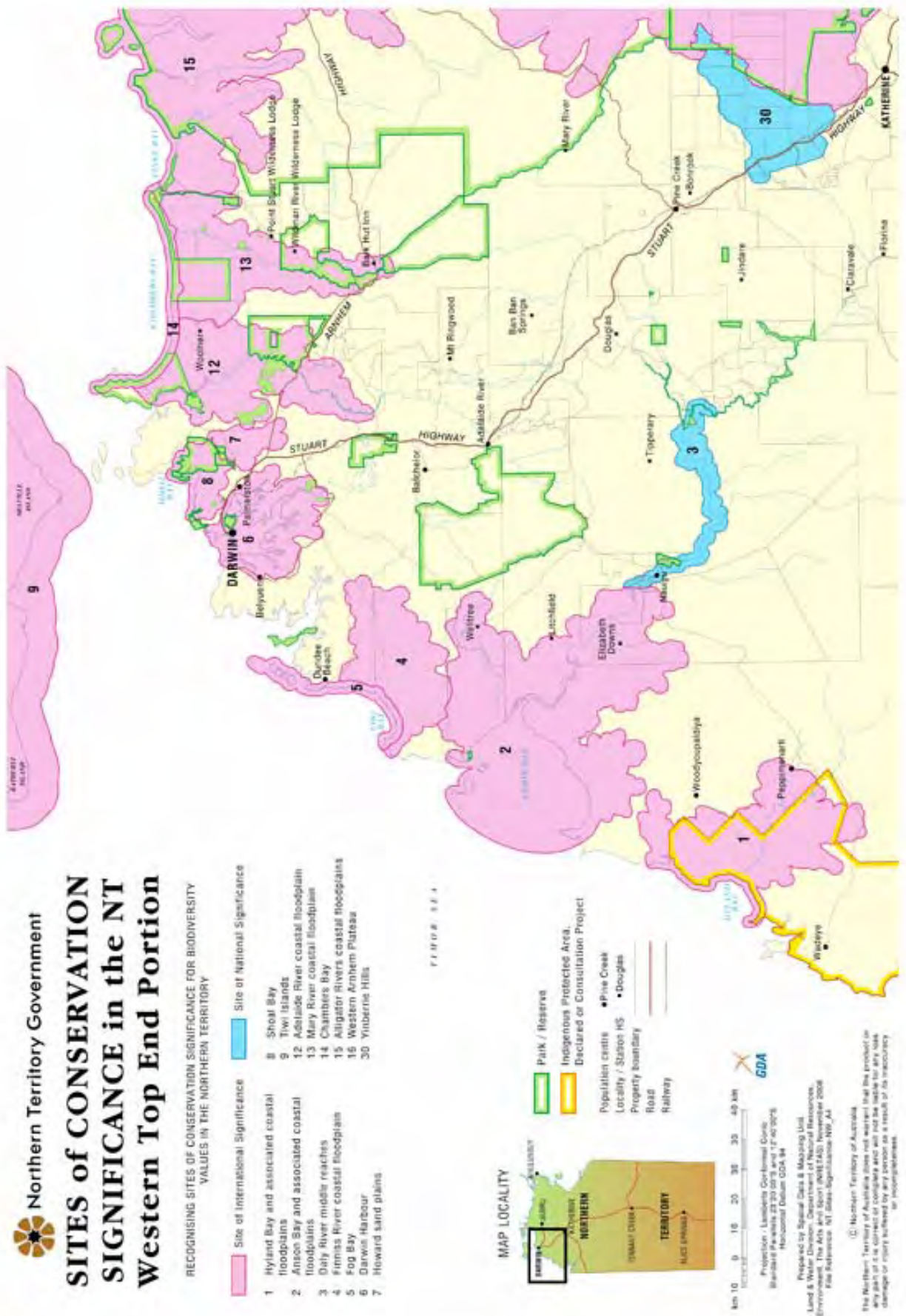


Figure 2. Location of sites of conservation significance in the NT: western Top End portion

sections on other environmental values and management issues.

Method: The ecological description of each site is mostly based on referenced information and data provided in an accompanying table, and where there is no supporting information or data available (such as for “Condition”), is based on the contributions of experts. Data and information presented in the tables was compiled from existing sources, such as flora and fauna databases curated by the Department of Natural Resources, Environment, the Arts and Sport, and reports or scientific papers where available. Sources of data and definitions of terms used in the table and maps are presented in section 3 of this report (Definitions and Data Sources).

Scientific staff and others with knowledge of specific sites were asked to review the content of the relevant compilations for accuracy and completeness and add content to information gaps where they could, prior to draft compilations being released for public comment.

Draft compilations were mailed out to relevant landholders in October 2008, and other stakeholders were notified about the project and the compilations during a public consultation period from 24 November to 19 December 2008. All draft documents were available on the NRETAS website during this period and stakeholders were invited to comment on them and provide additional relevant data or information before compilations were finalised.

Maps: An A4 map of each site was prepared by Matthew Fegan (NRETAS) using data available in the NRETAS Fauna Atlas and vegetation database and other NRETAS spatial data sets. Note that in sites with a large number of records for threatened

species, only a representative subset could be portrayed on the map. Only locations of threatened species / other values inside site boundaries are shown.

Imagery: A Google Earth satellite image (undated) is provided for each site except for those sites which include extensive residential areas (such as Darwin Harbour and Howard sand plains sites) for which LANDSAT imagery (2006) was used to provide context. Beth Crase and Louise Harrison (NRETAS) clipped the images from larger format imagery.

Preparation: Site boundaries were delineated and site data extracted and collated by Louise Harrison, Linda McGuire and Brian Lynch (NRETAS). Compilations for sites in the Top End and Savanna regions of the NT were prepared by Louise Harrison and compilations for sites in the Arid region were prepared by Linda McGuire, with guidance from Simon Ward, and other NRETAS senior scientific staff including Alaric Fisher, Chris Pavey and John Woinarski. The input from contributors is acknowledged in the relevant site compilation.

Acknowledgements: Many people contributed to the content of the compilations and these people are listed in section 5 of this report. Guy Dutson (Birds Australia) provided helpful comments on the criteria and data relating to bird aggregations, Linda Kenny (NRETAS) provided layout and formatting expertise, Gay Crowley (TS CRC) created and input all text into a macro at short notice, and Lynton Fritz (NRETAS) prepared Figures 1 and 2 in the report. Numerous people provided colour photographs for use in this inventory and photographers are acknowledged throughout the document. Our thanks to all of them.