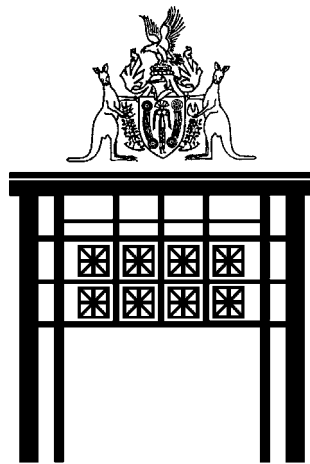


**DEPARTMENT OF THE
LEGISLATIVE ASSEMBLY**



**PORTFOLIO BUDGET
STATEMENT**

2008 - 2009



DEPARTMENT OF THE LEGISLATIVE ASSEMBLY

Honourable Members,

2008-2009 PORTFOLIO BUDGET STATEMENT

This is the Portfolio Budget Statement for the Department of the Legislative Assembly.

The aim of this Statement is to inform you of the planned allocation of resources to the agreed outcomes for the Department in line with Budget Paper 3, and acknowledges my obligation for accountability and transparency to the Assembly and through it, the public.

The Statement provides information on appropriation across the three key outputs for the Department along with quantitative and qualitative performance measures and estimates where possible.

Along with the Department's Strategic Plan, this statement provides the basis for detailed business planning, priority setting and resource management for the year. I commend the Statement to all Members in understanding the core business of the Department and its dedication to achieving planned outcomes within the budget framework.

A handwritten signature in blue ink, reading "Jane Aagaard". The signature is written in a cursive style.

Jane Aagaard
Speaker of the Legislative Assembly

12 June 2008

CONTENTS

Statement by the Clerk of the Legislative Assembly.....	2
Section 1	
Introduction	3
Departmental Overview.....	4
Roles and Responsibilities	5
Our Vision	5
Our Purpose.....	5
Our Values	5
Our Objectives	5
Strategic Issues 2008-2009	6
Priorities/Objectives	6
Section 2	
Outcome / Output Structure	7
<u>Output 1 – Assembly Services</u>	8
<i>Sub Output</i> 1.1 <i>Procedural Advice and Chamber Support</i>	11
1.2 <i>Record of Proceedings and Debate</i>	13
1.3 <i>Committee Support Services and Advice</i>	15
1.4 <i>Parliamentary Relations and Education</i>	18
1.5 <i>Statehood Steering Committee</i>	20
1.6 <i>Other Assembly Services</i>	22
<u>Output 2 – Members’ and Client Services</u>	24
<i>Sub Output</i> 2.1 <i>Electorate Office Support</i>	27
2.2 <i>Members’ Services</i>	29
<u>Output 3 – Building Management Services</u>	31
<i>Sub Output</i> 3.1 <i>Parliament House Floor Space Managed</i> ...	33
Section 3	
<u>Parliamentary Services</u>	35
Section 4	
Financials	
• Financial Statements	
– Operating Statement.....	37
– Balance Sheet.....	40
– Cash Flows Statement.....	42
• Agency Output / Sub-Output Allocation Matrix	
– 2008-09 Budget	44
– 2007-08 Revised Budget	45
– 2007-08 Original Budget	46



DEPARTMENT OF THE LEGISLATIVE ASSEMBLY

Statement by Clerk of the Legislative Assembly

This is the sixth edition of the Legislative Assembly Portfolio Budget Statement which provides a useful planning and information tool to meet the requirements of Accrual Accounting and Output Reporting.

As part of its business and financial planning process, the Department of the Legislative Assembly continues to provide a Portfolio Budget Statement in order to present detailed financial information, performance and outcomes at a level below that published in Budget Paper No. 3.

This process allows for a more detailed analysis and examination of the Department's performance and expenditure against planned outcomes and targets. As such, the transparency of performance and fiscal integrity is available to a wider audience.

In line with the Department's Strategic Plan, our purpose remains to deliver high quality advice and services to support the Assembly and its Members and Committees.

Ian McNeill
Clerk of the Legislative Assembly

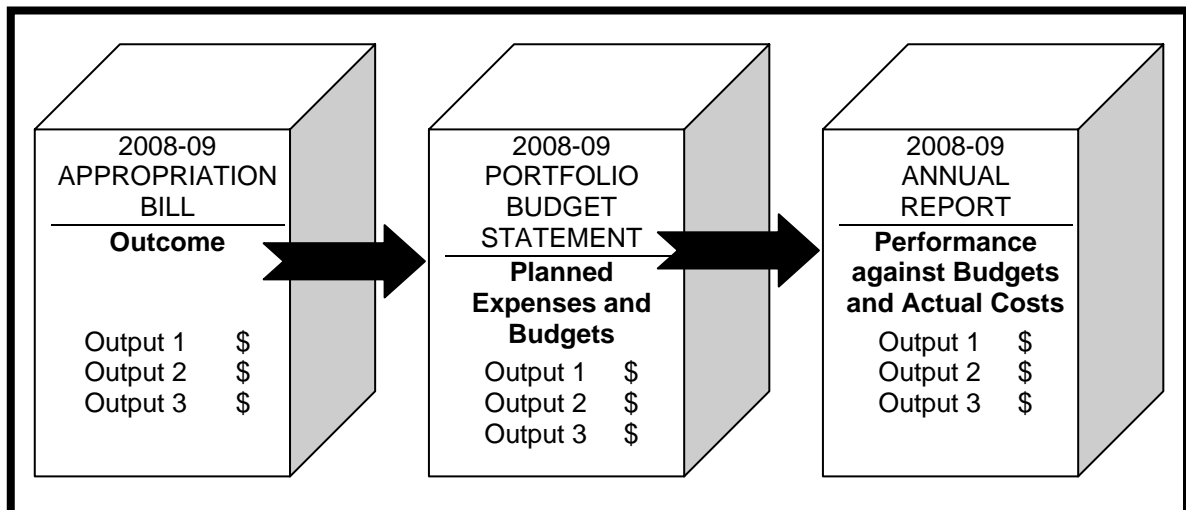
12 June 2008

SECTION 1

INTRODUCTION

The Portfolio Budget Statement (PBS) is provided as a planning document for the forthcoming year. The PBS is directly linked with the Appropriation Bill and the financial allocations for the Department's Outputs and will provide the basis for performance reporting in the Annual Report.

The purpose of the Portfolio Budget Statement is to inform Members of the basis for proposed allocations of resources across the Department of the Legislative Assembly against the planned outcomes and Budgets. It is designed to provide information for the justification of each appropriation item in Budget Paper 3 in qualitative and quantitative terms (quality, quantity, timeliness and cost) with appropriate performance measures to facilitate reporting purposes.



RESOURCES, PLANNING AND PERFORMANCE RELATIONSHIP

DEPARTMENTAL OVERVIEW

THE DEPARTMENT

The Legislative Assembly of the Northern Territory is a unicameral Parliament established under the *Northern Territory (Self-Government) Act 1978* of the Commonwealth.

The Act provides the Department with the independence which parliamentary departments normally have. In accord with usual Australian parliamentary practice, the Department is responsible not to the government of the day, but through the Speaker, to the Parliament and its Members.

The Chief Minister has nominal ministerial responsibility for the Department; however, the Speaker has the powers, functions and responsibilities which the *Public Sector Employment and Management Act* confers upon a Minister and the Commissioner for Public Employment.

The Chief Executive Officer of the Department is the Clerk, who is appointed by the Administrator on the recommendation of the Speaker. Apart from his duties in the Assembly, the Clerk has responsibilities and functions comparable to those of Chief Executive Officers and Accountable Officer as in other public sector agencies.

ROLES AND RESPONSIBILITIES

The Department of the Legislative Assembly provides operational support, services and professional advice to Members of the Northern Territory Legislative Assembly and other clients, and promotes community understanding of parliamentary democracy.

The key functional responsibilities of the agency are:

- Supporting Members of the Legislative Assembly, Parliamentary Committees and clients;
- Facilitating the effective operation of the Chamber during sittings of the Legislative Assembly;
- Managing the Parliament House facility;
- Providing administrative services relating to Members' salaries, allowances and entitlements, Members' electorate offices and electorate office staff;
- Promoting community awareness and understanding of parliamentary democracy and the operations of the Legislative Assembly; and
- Providing administrative support to the Statehood Steering Committee and its secretariat.

OUR VISION

To evolve and be responsive by supporting of Members, the Parliament and the democratic process.

OUR PURPOSE – *Why are we here?*

To deliver high quality advice and services to support the Assembly, its Members and Committees, anticipate and respond to future challenges.

OUR SERVICES

Assembly and Committee support, Members Services, public education and awareness and Building Management.

OUR VALUES – *What are we committed to?*

- Respect
- Accountability
- Professionalism
- Innovation
- Impartiality
- Co-operation
- Transparency

STRATEGIC ISSUES 2008-09:

- Ongoing requirement to modernise parliamentary practices and procedures to conform with contemporary practices and public expectations;
- Continuing administrative support to the Statehood Steering Committee to promote the benefits of statehood to all Territorians; and
- Ongoing review, investigation and implementation of medium to long-term building maintenance issues for Parliament House.

PRIORITIES/OBJECTIVES:

Building Capacity

To ensure that the Legislative Assembly has a workforce with the capabilities to meet future challenges.

Governance

Activity within the Legislative Assembly is based on good governance, accountability and transparency.

Parliamentary Practice

To ensure the highest standard of prompt and accurate procedural advice.

Further develop our expertise in the constitutional and procedural bases of the Assembly and Committees.

Education and Awareness

To promote awareness of and engage participation in Parliamentary processes.

Information Management

To ensure the Legislative Assembly has effective systems to enable strategic and informed decision making and productive information sharing.

Building Management

To ensure the infrastructure assets and physical environments maintained by the Legislative Assembly are optimised and sustained.

SECTION 2

OUTCOME/OUTPUT STRUCTURE

The Department has a commitment to achieve the following outcomes:

Delivery of parliamentary services throughout the Northern Territory to facilitate:
effective representation by Members of the Legislative Assembly,
good governance and;
parliamentary democracy

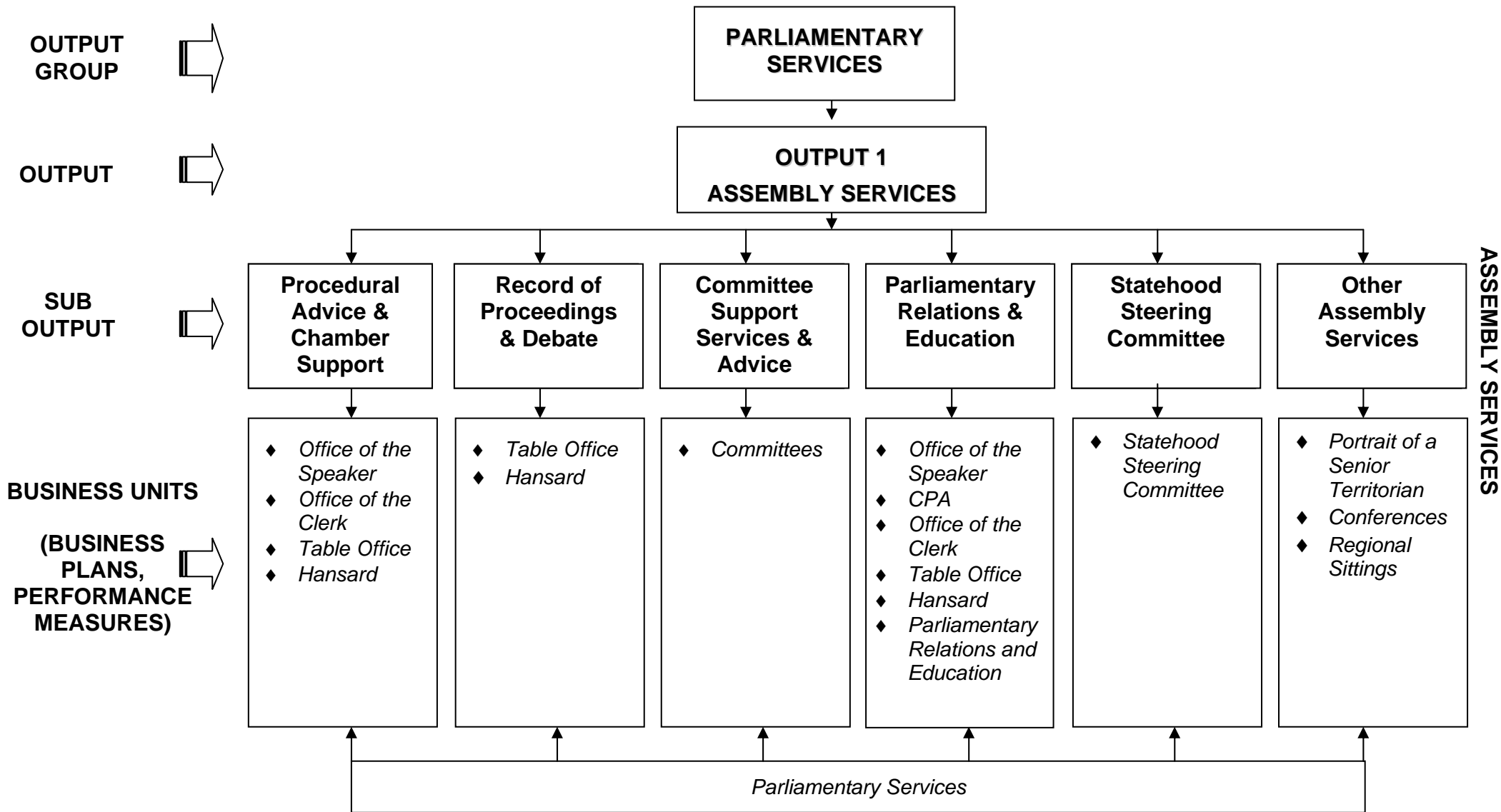
ORGANISATIONAL STRUCTURE

The Department has one Output Group with three key outputs and a series of sub-outputs which broadly represent the organisational structure of the Department. However, where necessary inputs from relevant areas have been attributed to the appropriate output to ensure full output costs are captured.

OUTCOME AND OUTPUT INFORMATION **RELATIONSHIP BETWEEN OUTCOME AND OUTPUTS**

<u>OUTCOME:</u> Provision of capability and support services for the effective operation of the Legislative Assembly and its committees, in accordance with statutory requirements, Standing Orders and resolutions of the Assembly		
<u>OUTPUT 1</u> ASSEMBLY SERVICES \$4.227m	<u>OUTPUT 2</u> MEMBERS' AND CLIENT SERVICES \$12.523m	<u>OUTPUT 3</u> BUILDING MANAGEMENT SERVICES \$6.959m
SUB-OUTPUT 1.1 Procedural Advice and Chamber Support \$1.093m	SUB-OUTPUT 2.1 Electorate Office Support \$4.934m	SUB-OUTPUT 3.1 Parliament House Floor Space Managed \$6.959m
SUB-OUTPUT 1.2 Record of Proceedings and Debate \$0.666m	SUB-OUTPUT 2.2 Members Services \$7.589m	
SUB-OUTPUT 1.3 Committee Support Services and Advice \$0.857m		
SUB-OUTPUT 1.4 Parliamentary Relations and Education \$0.827m		
SUB-OUTPUT 1.5 Statehood Steering Committee \$0.717m		
SUB-OUTPUT 1.6 Other Assembly Services \$0.067m		

WORKING FOR OUTCOMES – HIERARCHICAL STRUCTURE – OUTPUTS /SUB-OUTPUTS / BUSINESS UNITS (INPUTS) / BUSINESS PLANS



OUTPUT 1 – ASSEMBLY SERVICES

RESOURCE ALLOCATION FOR OUTPUT 1:

OUTPUT					
Provision of administrative, operational and procedural support to Members, the Assembly and its Committees. Production of parliamentary documentation and records, and management of related databases. Administration of the Statehood Steering Committee Project. Management of participation in inter-parliamentary activities at the national and international level, and development and management of parliamentary information and community awareness programs.					
	<i>Original Budget 2007-08</i>		<i>Revised Budget 2007-08</i>		<i>Estimate 2008-09</i>
NON-DISCRETIONARY EXPENDITURE	NIL		NIL		NIL
DISCRETIONARY EXPENDITURE					
Procedural Advice and Chamber Support	\$1.023m		\$1.037m		\$1.093m
Record of Proceedings	\$0.645m		\$0.623m		\$0.666m
Committee and Support Services	\$0.732m		\$0.809m		\$0.857m
Parliamentary Relations and Education	\$0.699m	a	\$0.792m		\$0.827m
Statehood Steering Committee	\$0.696m		\$0.699m	b	\$0.717m
Other Assembly Services	\$0.218m	c & d	\$0.083m	e	\$0.067m
TOTAL OUTPUT EXPENDITURE	\$4.013m	f	\$4.043m	f	\$4.227m

Explanation of major variations for Output 1:

- a \$108k *Internal Adjustment:* Sub output percentage allocation of the Office of the Speaker and the Office of the Clerk was reallocated from Other Assembly Services to the Parliamentary Relations Education based on services provided. (Refer to Section 4 Budget By Output)
- b \$600k Ongoing funding has been provided for the Statehood Steering Committee to 2009-10 with a review to be undertaken prior to 2010-11.
- c \$18k Recognition of revenue and expenditure for the Parliamentary Public Works Environment Committee Conference held in September 2007.
- d -\$108k *Internal Adjustment:* Sub output percentage allocation of the Office of the Speaker and the Office of the Clerk was reallocated from Other Assembly Services to the Parliamentary Relations Education based on services provided. (Refer to Section 4 Budget By Output)
- e -\$18k Reduction of revenue and expenditure for the Parliamentary Public Works Environment Committee Conference in held in September 2007.
- f Remaining differences between sub output budget appropriation relates to a number of variables: corporate services output allocation, CPI parameter adjustments, productivity and efficiency dividends and the 1% EBA increase and DCIS goods and services free of charge.

Please refer to Financial Statement variations in Section 4 for a detailed listing of agency budget variations.

KEY PERFORMANCE MEASURES:

Quantity	Original Budget 2007-08		Revised Budget 2007-08		Estimate 2008-09
Operational and procedural support and advice to the Chamber (sitting hours)	320	g	305	g	310
Statehood Steering Committee Project	\$0.600m	h	\$0.600m	h	\$0.600m
Committees supported	6		6		6
Information/education programs (Includes school tours, debates, historical tours, role plays, and outreach visits)	244		244		244
Quality					
Members' satisfaction with service	95%		95%		95%
Timeliness					
Parliamentary deadlines met	95%		95%		95%
Records and transcripts produced within agreed timeframes	95%		95%		95%

Explanation of major variations:

- g Sitting hours are dependant on the Assembly's conduct of its own business.
- h \$600k Represents direct costs of the ongoing funding for Statehood Steering Committee.

PERFORMANCE FORECAST:

- The operations of the Assembly Chamber and Committees will be supported by timely, accurate and effective programming, document production and procedural advice as dictated by the demands of the Assembly and its Members.
- In 2008-09 resources of the Committee Secretariat will support the operations of the Public Accounts Committee incorporating the Estimates Committee, Legal and Constitutional Affairs Committee, the Substance Abuse Committee, the Environment and Sustainable Development Committee, the Sport and Youth Committee and the Subordinate Legislation and Publications Committee.
- The Department will be proactive in the promotion of the Parliament and the parliamentary process through its interaction with other jurisdictions, the Commonwealth Parliamentary Association and appropriate education programs to meet community and client requirements.

OUTPUT 1 – Assembly Services – Sub-Outputs

SUB-OUTPUT 1.1 Procedural Advice and Chamber Support

Description: To provide services to assist the Assembly to meet and transact its business in accordance with Standing Orders, statutory requirements and resolutions of the Assembly.

Budget Allocation:

<i>Original Budget 2007-08</i>		<i>Revised Budget 2007-08</i>		<i>Estimate 2008-09</i>
\$1 023 000	i	\$1 037 000	i	\$1 093 000

Explanation of major variations:

- i Differences between the budget appropriation relates to a number of variables: corporate services output allocation, CPI parameter adjustments, productivity and efficiency dividends and the 1% EBA increase and DCIS goods and services free of charge.

Please refer to Financial Statement variations in Section 4 for a detailed listing of agency budget variations

Services Provided:

- Provide timely and accurate advice in relation to the proceedings of the House.
- Process correspondence and documentation relating to the Assembly.
- Develop accurate Parliamentary Records and retain records in safe custody.

Performance Measures and Target:

Performance Measure	<i>Original Target 2007-08</i>		<i>Revised Target 2007-08</i>		<i>Estimate 2008-09</i>
Quantity					
Sitting days	34		34		34
Average sitting hours per sitting day	9.4		9	j	9
BILLS					
Bills passed and prepared for Administrator's Assent	60		50	k	50
Condolence Tributes produced	4		4		4
Minutes of Proceedings produced	250		200	k	200
Notice Papers produced	31		31		31
PRINTING					
Daily Question Papers	31		31		31
Question Paper, written	7		7		7
Amendment Schedules processed	13		9	k	9
Questions on Notice processed	1		17	l	20
Quality					
Members' satisfaction with quality of services, information and documentation provided	95%		95%		95%

Performance Measure	Original Target 2007-08	Revised Target 2007-08	Estimate 2008-09
Timeliness			
Time-frame for production of daily proof Minutes of Proceedings – same day	100%	100%	100%
Time-frame for production of final Minutes of Proceedings c/w index – two weeks	100%	100%	100%
Time-frame for production of proof Notice Papers – same day	100%	100%	100%
Time-frame for production of proof Bills register update – within 24hrs	100%	100%	100%
Time-frame for registration/archiving Tabled papers and Reports – 24hrs/one week	100%	100%	100%

Explanation of major variations:

- j Average sitting hours being sat has gradually decreased in line with the striving for more ‘family friendly’ hours and a decrease in the legislative program associated with a maturing legislature.
- k Bills passed are dependent on the legislative framework of Government. Consequently with a lesser number of Bills being dealt with, amendment Schedules and Minutes pages of proceedings will fall accordingly.
- l Questions on notice are entirely in the hands of Members.

Key Client Services Standards:

- Advice provided is accurate and timely.
- All records produced are accurate.
- Daily proof minutes of proceedings are produced on the same day.
- Final minutes of proceedings are produced within 2 weeks.
- Production of proof Notice Papers on same day.
- Maintenance of Department Website in a timely manner.

OUTPUT 1 – Assembly Services – Sub-Outputs

SUB-OUTPUT 1.2 Record of Proceedings and Debate

Description: Services to provide and maintain an accurate record of business and debate conducted in the Assembly and Committees.

Budget Allocation:

<i>Original Budget 2007-08</i>		<i>Revised Budget 2007-08</i>		<i>Estimate 2008-09</i>
\$645 000	m	\$623 000	m	\$666 000

Explanation of major variations:

- m Differences between the budget appropriation relates to a number of variables: corporate services output allocation, CPI parameter adjustments, productivity and efficiency dividends and the 1% EBA increase and DCIS goods and services free of charge.

Please refer to Financial Statement variations in Section 4 for a detailed listing of agency budget variations.

Services Provided:

- Production of Daily Hansard.
- Production of Question Papers.
- Production of Parliamentary Record.
- Production of Committee records and transcripts.

Performance Measures and Targets:

Performance Measure	Original Target 2007-08	Revised Target 2007-08	Estimate 2008-09
Quantity			
Parliamentary Record production (5.5 volumes) – pages	3600	3500	3600
Committee hearings services/reported/transcribed	1	-	1
Questions Hansard	31	31	31
Quality			
Members' satisfaction with quality of services, information and documentation provided	95%	95%	95%
Timeliness			
Time-frame for production of proof Questions Hansard – same day within 2 hours of Question Time.	100%	100%	100%
Time-frame for distribution of Daily Hansard – electronic net distribution – within 3hrs of sittings end	100%	100%	100%
Time-frame for distribution of Daily Hansard – hard copy – 10am following day	100%	100%	100%
Time-frame for production of Parliamentary Record – 4 weeks	100%	100%	100%

Explanation of Major Variations: N/A

Key Client Services Standards:

- All Parliamentary Records are accurate.
- Questions Hansard produced are within two hours of each sitting day.
- Uplift of Daily Hansard within 3 hours of sittings end.
- Parliamentary Record produced within 4 weeks.
- Daily Hansard produced for each sitting day and available for distribution by 10am the following day.
- Rushes of specific business for Members produced as and when required.

OUTPUT 1 – Assembly Services – Sub-Outputs

SUB-OUTPUT 1.3 Committee Support Services and Advice

Description: To provide timely and accurate research, administrative and procedural support so that Standing and Select Committees can effectively fulfil their statutory and other responsibilities.

Budget Allocation:

<i>Original Budget 2007-08</i>		<i>Revised Budget 2007-08</i>		<i>Estimate 2008-09</i>
\$732 000	n	\$809 000	n	\$857 000

Explanation of major variations:

n Differences between the budget appropriation relates to a number of variables: corporate services output allocation, CPI parameter adjustments, productivity and efficiency dividends and the 1% EBA increase and DCIS goods and services free of charge.

Please refer to Financial Statement variations in Section 4 for a detailed listing of agency budget variations.

Services Provided:

- Provision of procedural and policy advice to the Committees.
- Management of financial and other resources.
- Conduct of inquiries and programs.
- Preparation of reports, discussion papers and information papers.
- Promotion of community awareness and community involvement.

Performance Measures and Targets:

Performance Measure	<i>Original Target 2007-08</i>		<i>Revised Target 2007-08</i>		<i>Estimate 2008-09</i>
Quantity					
Number of references provided	10		10		13
Number of meetings held	54		67		60
Quality					
To the satisfaction of Committee members	95%		98%		98%
In accordance with the terms of reference	95%		98%		98%
High standard of accuracy	95%		95%		95%
Timeliness					
Services are delivered within agreed time frames	95%		95%		95%

Explanation of major variations.

The quantity performance measures refer to the Legal and Constitutional Affairs, Substance Abuse in the Community and Sport and Youth Committee.

The resource of all committees is pooled into a central core which services the needs and requirements of each committee. Only the expenditure that can be directly attributed to a particular committee is recorded against that Committee. Estimated expenditure for 2007-08 for each committee is as follows;

PAC (including Estimates)	\$8,200
Substance Abuse Committee	\$32,000
Legal and Constitutional Affairs Committee	\$2,500
Environment and Sustainable Development Committee	\$5,000
Sport and Youth Committee	\$19,500
Subordinate Legislation and Publications Committee	\$4,260

Committee	No. of references 2007-08	No. of meetings held 2007-08	No. of references estimated 2008-09	No. of meetings estimated 2008-09
Public Accounts	5	10	7	12
Substance Abuse in the Community	2	12	2	10
Legal and Constitutional Affairs	1	7	1	10
Environment and Sustainable Development	1	16	2	7
Sport and Youth	1	17	1	15
Subordinate Legislation and Publications	N/A	5	N/A	6
Total	10	67	13	60

Explanation of major variations:

Public Accounts Committee:

It should be noted that the number of meetings and references for the Public Accounts Committee (PAC) takes into account the fact that the Members of the PAC are appointed as members of the Estimates Committee and the Government Owned Corporations Scrutiny Committee through an order of the Assembly.

Substance Abuse in the Community:

The Select Committee on Substance Abuse in the community expects to finalise its present inquiry into cannabis during the year.

During the year, the Substance Abuse Committee completed the community consultation phase of its major inquiry. The Substance Abuse in Remote Communities report 'Confronting the Confusion and Disconnection' was tabled in October 2007.

Increased expenditure for 2007-08 is accounted for the cost of hearings and meetings in other centres, as well as the production cost for the report and accompanying volume of transcripts.

Environment and Sustainable Development:

The Environment Committee finalised its inquiry into Invasive Species and tabled its report during May 2008 sittings of the Assembly. It is anticipated that the Committee will be in a position where it will have the capacity to undertake two minor references during 2008-09.

Arising from the Committees enquiry into invasive species there has been a major increase in the sitting days of the Committee.

Sport & Youth:

The Sessional Committee on Sport and Youth will continue with its program of community consultation during 2008-09, with an emphasis on remote communities.

Increased expenditure for 2007-08 is directly related to the commencement of the community consultation program which incorporated hearings and meetings in all major centres and selected communities. As well, evidence has been taken from expert witnesses.

Key Client Services Standards:

- Effective and efficient organisation of Committee meetings and hearings.
- Background research material is produced in a timely manner and provides valuable information for the business of the Committee.
- Procedural and policy advice is timely and accurate.
- Sufficient expert knowledge of committee subject matter to provide professional support to Members.
- Community engagement maximised and appropriate to the target group.
- Co-ordinated services between committees to meet Members other responsibilities.

OUTPUT 1 – Assembly Services – Sub-Outputs

SUB-OUTPUT 1.4 Parliamentary Relations and Education

Description: To promote community awareness and knowledge of the constitutional role and work of the Assembly and its committees. To facilitate the process of inter-parliamentary relations for Members, including participation in Commonwealth Parliamentary Association activities and other conference and seminar activities.

Budget Allocation:

Original Budget 2007-08		Revised Budget 2007-08		Estimate 2008-09
\$699 000	o & p	\$792 000	p	\$827 000

Explanation of major variations:

- o \$108k *Internal Adjustment:* Sub output percentage allocation of the Office of the Speaker and the Office of the Clerk was reallocated from Other Assembly Services to the Parliamentary Relations Education based on services provided. (Refer to Section 4 Budget By Output)

- p Differences between the budget appropriation relates to a number of variables: corporate services output allocation, CPI parameter adjustments, productivity and efficiency dividends and the 1% EBA increase and DCIS goods and services free of charge.

Please refer to Financial Statement variations in Section 4 for a detailed listing of agency budget variations.

Services Provided:

- Provision of parliamentary information to the community and interest groups.
- Liaison with education services, schools, teachers and students to promote and assist with Parliamentary Education programs including outreach programs in rural and remote communities.
- Support of public and organised visits to Parliament House.
- Support to historical projects associated with the Parliament.
- Support and advice to Members conducting inter-parliamentary visits, meetings and seminars etc, including overseas CPA activities.
- Coordination of induction programs, seminars and familiarisation programs for Members, Electorate Officers and public and private sectors.

Performance Measures and Targets:

Performance Measure	Original Target 2007-08	Revised Target 2007-08	Estimate 2008-09
Quantity			
Information/education programs	244	256	250
Inter-parliamentary programs (Includes visiting delegations, ANZACATT, ASPG, inter-parliamentary study groups and CPA visits)	25	23	25
Quality			
Members' and other clients' satisfaction	95%	95%	95%
Survey from public tours – favourable response	90%	90%	90%
Services are delivered within agreed time frames	95%	95%	95%
Cost			
Cost of information/education programs	\$539k	\$609k	\$646k
Cost of inter-parliamentary programs and visits	\$160k	\$183k	\$181k

Explanation of major variations: Refer to Output Summary variations

Key Client Services Standards:

- Information and services provided are accurate and relevant to needs.
- Educational curriculum is consistent with school educational programs and is informative as well as researched.
- Support and advice to Members is timely, accurate and meets their needs.

OUTPUT 1 – Assembly Services – Sub-Outputs

SUB-OUTPUT 1.5 Statehood Steering Committee

Description: The role of the Statehood Steering Committee is to consult with Territorians on a future grant of Statehood and report to the Legislative Assembly's Standing Committee on Legal and Constitutional Affairs.

Budget Allocation:	Original Budget 2007-08		Revised Budget 2007-08		Estimate 2008-09
	\$696 000	q	\$699 000	q	\$ 717 000

Explanation of major variations:

q Differences between the budget appropriation relates to a number of variables: corporate services output allocation, CPI parameter adjustments, productivity and efficiency dividends and the 1% EBA increase and DCIS goods and services free of charge.

Please refer to Financial Statement variations in Section 4 for a detailed listing of agency budget variations.

Services Provided:

- Strategic and policy advice to a 17 member Committee
- Information and update briefings to Minister and Shadow Minister
- Education Programs to Northern Territory community
- Publication of information and educational materials on Statehood
- Maintenance of website
- Media liaison
- Delivery and coordination of Committee Meetings
- Reporting to Standing Committee on Legal and Constitutional Affairs

Performance Measures and Targets:

Performance Measure	Original Target 2007-08		Revised Target 2007-08		Estimate 2008-09
Quantity					
Number of Committee Meetings held	4		4		4
Number of Publications Produced	6		4	r	4
Number of Presentations to Schools and Community groups	40		66	s	40
Number of days with Statehood displays at Show Circuit and at public venues	20		21		23

Performance Measures and Targets Cont.:

Performance Measure	Original Target 2007-08	Revised Target 2007-08	Estimate 2008-09
Quality			
Targeted level of satisfaction of Committee Members	95%	95%	95%
Delivery in accordance with Terms of Reference	100%	100%	100%
Standard of accuracy	95%	95%	95%
Timeliness			
As required by Committee programs, schedules and agreed timeframes	100%	100%	100%
Cost			
Allocation of funding to Committee references: <ul style="list-style-type: none"> • Statehood Steering Committee 	\$0.696m	\$0.699m	t \$0.717m

Explanation of major variations:

- r Publications were delayed due to complexity of re-producing information in Indigenous and Community Languages.
- s During the second half of the year, the Statehood Steering Committee’s Education Officer was accompanied by Table Office staff member. As a result education programs were able to be extended to an increased number of schools and community groups to be visited.
- t Differences between the budget appropriation relates to a number of variables: corporate services output allocation, CPI parameter adjustments, productivity and efficiency dividends and the 1% EBA increase and DCIS goods and services free of charge.

Please refer to Financial Statement variations in Section 4 for a detailed listing of agency budget variations.

Key Client Services Standards:

- Coordinating Committee Meetings program.
- Effective public consultation, meetings and hearings program.
- Providing further materials for education and promotion of statehood issues.
- Establishment of Select Working Committees.

OUTPUT 1 – Assembly Services – Sub-Outputs

SUB-OUTPUT 1.6 Other Assembly Services

Description: This Sub-output covers services and projects which are not attributed to any other Sub-output and includes the ICT Cabling Project for Parliament House, Video Conferencing and Alice Springs Sittings.

Budget Allocation:	Original Budget 2007-08		Revised Budget 2007-08		Estimate 2008-09
	\$218 000	u & w	\$83 000	v & w	\$67 000

Explanation of major variations:

- u \$18k Recognition of revenue and expenditure for the Parliamentary Public Works Environment Committee Conference held in September 2007.
- \$108k *Internal Adjustment:* Sub output percentage allocation of the Office of the Speaker and the Office of the Clerk was reallocated from Other Assembly Services to the Parliamentary Relations Education based on services provided. (Refer to Section 4 Budget by Output)
- v -\$18k Reduction of revenue and expenditure for the Parliamentary Public Works Environment Committee Conference held in September 2007 Increase in Corporate Services allocation to sub output for 2008-09 due to a number of variables: CPI parameter adjustments, productivity and efficiency dividends and the 1% EBA increase.
- w Remaining differences between the budget appropriation relates to a number of variables: corporate services output allocation, CPI parameter adjustments, productivity and efficiency dividends and the 1% EBA increase and DCIS goods and services free of charge.

Please refer to Financial Statement variations in Section 4 for a detailed listing of agency budget variations.

Special Projects:

- ICT Cabling Project for Parliament House
- Conferences
- Regional sittings

Performance Measures and Targets:

Performance Measure	Original Target 2007-08	Revised Target 2007-08	Estimate 2008-09
Quantity			
Quality			
Members and clients satisfaction with service (Survey)	95%	95%	95%
Delegates/participants achieved purpose (survey)	95%	95%	95%
Timeliness			

Key Client Services Standards:

- Successful completion of projects.
- Objectives achieved within budget and on time.

WORKING FOR OUTCOMES – HIERARCHICAL STRUCTURE – OUTPUTS /SUB-OUTPUTS / BUSINESS UNITS (INPUTS) / BUSINESS PLANS

OUTPUT GROUP ➡

PARLIAMENTARY SERVICES

OUTPUT ➡

MEMBERS' AND CLIENT SERVICES

SUB-OUTPUT ➡

Electorate Office Support Services

Members' Services

BUSINESS UNITS (INPUT) ➡

◆ *Electorate Office Support*

◆ *Members' Services*
 ◆ *Office of the Speaker*
 ◆ *Office of the Clerk*

Parliamentary Services

MEMBERS' AND CLIENT SERVICES

OUTPUT 2 – MEMBERS’ AND CLIENT SERVICES

RESOURCE ALLOCATION FOR OUTPUT 2:

OUTPUT					
Provision of administrative services and support to Members of the Legislative Assembly in accordance with the Remuneration Tribunal Determination.					
	Original Budget 2007-08		Revised Budget 2007-08		Estimate 2008-09
NON-DISCRETIONARY EXPENDITURE					
• Members’ Services	\$7.023m	a	\$7.156m		\$7.156m
• Electorate Office Support	\$4.489m	b	\$4.594m	c	\$4.545m
DISCRETIONARY EXPENDITURE					
	\$0.673m		\$0.745m		\$0.822m
TOTAL OUTPUT EXPENDITURE					
	\$12.185m	d	\$12.495m	d	\$12.523m

Explanation of major variations for Output 2:

- a \$133k Members Base Salary (RTD) Increase in 2007-08 ongoing.
- b \$93k Recording of Work In Progress transfer from 2006-07 to 2007-08.
- c -\$93k Recording of Work In Progress transfer referred to 2007-08 only.
- d Remaining differences between the budget appropriation relates to a number of variables: corporate services output allocation, CPI parameter adjustments, productivity and efficiency dividends and the 1% EBA increase and DCIS goods and services free of charge.

Please refer to Financial Statement variations in Section 4 for a detailed listing of agency budget variations.

KEY PERFORMANCE MEASURES:

Quantity	Original Budget 2007-08		Revised Budget 2007-08		Estimate 2008-09
Members’ entitlements and electorate offices	\$11.512m		\$11.750m		\$11.701m
Quality					
Client satisfaction with services	95%		95%		95%
Timeliness					
Services delivered within agreed timeframes	95%		95%		95%
Cost					
Average administrative cost per Member for support to Members and Electorate Offices.	\$26 920		\$29 800		\$32 880

Explanation of major variations:

Refer to variations in Output Summary above

PERFORMANCE FORECAST:

Implementation of security measures as part of security and OH&S reviews

Management of electorate offices and Member services are in context of a Territory election to be held in the 08-09 financial year.

Ongoing focus on providing effective IT connectivity and functionality in Electorate Offices and monitoring of the desktop services contract to maximise services to members.

OUTPUT 2 – MEMBERS’ AND CLIENT SERVICES – Sub-Outputs

SUB-OUTPUT 2.1 Electorate Office Support

Description: Provision of administrative support and facilities management to electorate offices and advice and support to Electorate Officers as employees of the Department of Legislation Assembly.

Budget Allocation:

<i>Original Budget 2007-08</i>		<i>Revised Budget 2007-08</i>		<i>Estimate 2008-09</i>
\$4.805m	e & g	\$4.946m	f & g	\$4.934m

Explanation of major variations:

- e \$93k Recording of Work In Progress transfer from 2006-07 to 2007-08.
- f -\$93k Recording of Work In Progress transfer in 2007-08 only.
- g Remaining differences between the budget appropriation relates to a number of variables: corporate services output allocation, CPI parameter adjustments, productivity and efficiency dividends and the 1% EBA increase and DCIS goods and services free of charge.

Please refer to Financial Statement variations in Section 4 for a detailed listing of agency budget variations.

Services Provided:

- Provision of office services in relation to office equipment, furniture, stationery and general supplies in line with the Remuneration Tribunal Determination and Speaker’s Determinations.
- Liaison with Electorate Officers in relation to the provision of information technology services by the outsourced IT service providers.
- Support to Electorate Officers as employees of the Department in relation to HRM, HRD and OH & S issues.
- Provision of advice to Electorate Officers across the range of administrative and employee related issues .
- Provision of repairs and maintenance and new fit-outs to electorate offices.

Performance Measures and Targets:

Performance Measure	Original Target 2007-08		Revised Target 2007-08		Estimate 2008-09
Quantity					
Electorate offices	25		25		25
Quality					
Client satisfaction with services and support provided	95%		95%		95%
Timeliness					
Services delivered within agreed timeframes	95%		95%		95%
Cost					
Repairs and Maintenance cost	\$0.054m	h	\$0.147m	i	\$0.54m

Explanation of major variations:

h \$93k Recording of Work In Progress transfer from 2006-07 to 2007-08.

i -\$93k Recording of Work In Progress transfer in 2007-08 only.

Key Client Service Standards:

- Advice and information provided is accurate, timely and relevant;
- Services are delivered in a timely manner;
- Training provided to Electorate Officers meets operational needs;
- Members consulted and kept informed of all issues relating to electorate office accommodation.

OUTPUT 2 – MEMBERS’ AND CLIENT SERVICES – Sub-Outputs

SUB-OUTPUT 2.2 Members’ Services

Description: Provision of services to Members in relation to travel, vehicles, information technology, and finance and human resources

Budget Allocation:

<i>Original Budget 2007-08</i>		<i>Revised Budget 2007-08</i>		<i>Estimate 2008-09</i>
\$7.380m	j & k	\$7.549m	k	\$7.589m

Explanation of major variations:

j \$133k Members Base Salary (RTD) Increase in 2007-08 ongoing.

k Remaining differences between the budget appropriation relates to a number of variables: corporate services output allocation, CPI parameter adjustments, productivity and efficiency dividends and the 1% EBA increase and DCIS goods and services free of charge.

Please refer to Financial Statement variations in Section 4 for a detailed listing of agency budget variations.

Services Provided:

- Coordinate the acquisition and maintenance of Members’ vehicles in conjunction with NT Fleet.
- Provide a contact point for Members in relation to the payment of salaries and allowances through DCIS Executive Salaries Packaging Unit.
- Coordinate delivery of IT services to Members through the outsourced IT service providers.
- Provide advice and support to Members in relation to entitlements as outlined in the Remuneration Tribunal Determination.
- Manage, examine and approve claims for payment for all purchases on behalf of Members for DCIS to issue payments to clients.
- Maintain all accounts for Members and electorate offices to ensure compliance with the RTD and Speakers Determinations.
- Manage and maintain registers to monitor expenditure and reimbursements for Members and electorate offices against defined entitlement levels.
- Prepare and monitor invoices raised against Member to recover overpayments of salaries, travelling allowance and expenditures not covered under the RTD.

Performance Measures and Targets:

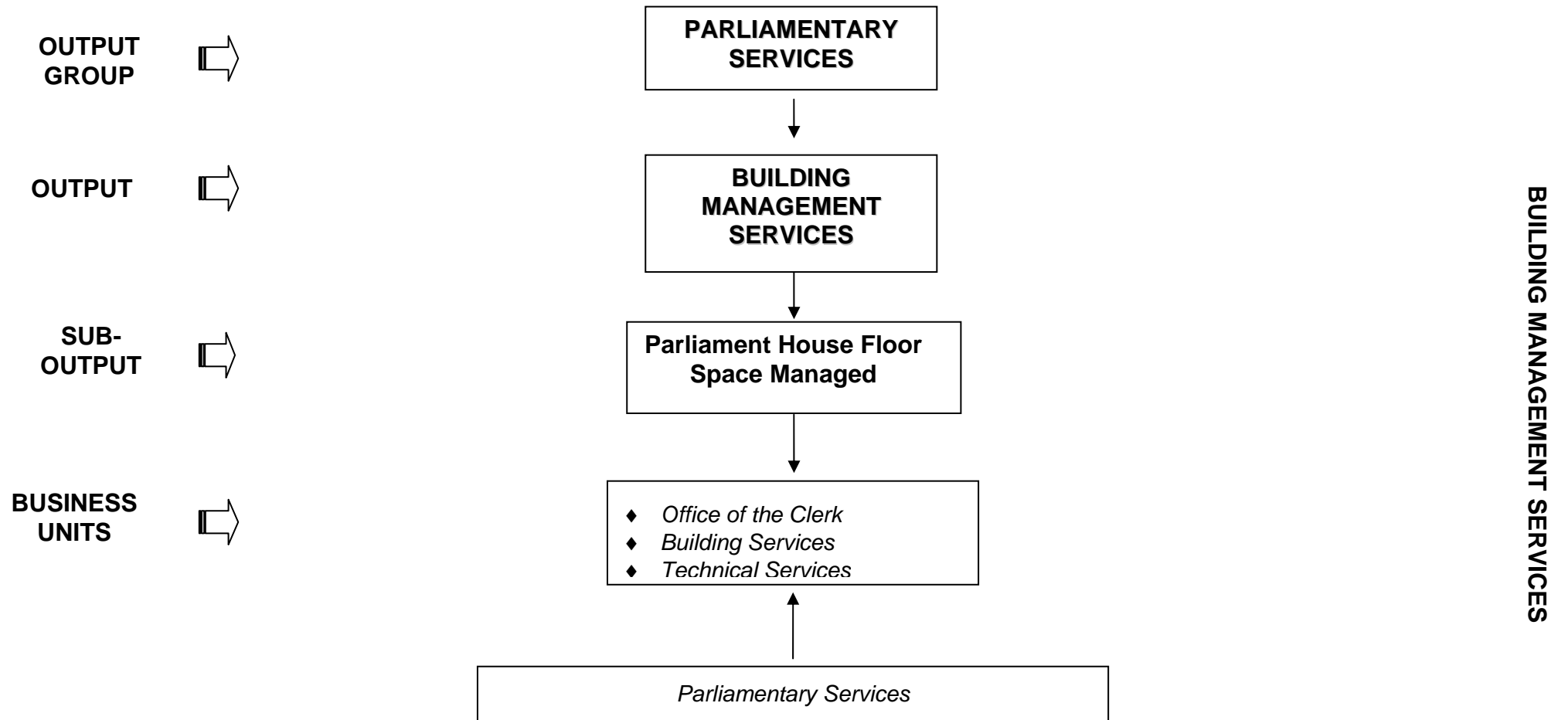
Performance Measure	Original Target 2007-08	Revised Target 2007-08	Estimate 2008-09
Quantity			
Number of Members	25	25	25
Quality			
Client satisfaction with services and support provi	95%	95%	95%
Timeliness			
Services delivered within agreed timeframes	95%	95%	95%

Explanation of major variations: N/A

Key Client Service Standards:

- Advice and information provided is accurate, timely and relevant.
- Travel Allowances paid in a timely manner.
- Prompt response to vehicle related requests by Members and Electorate Officers.
- Services are delivered in a timely manner;

WORKING FOR OUTCOMES – HIERARCHICAL STRUCTURE – OUTPUTS /SUB-OUTPUTS / BUSINESS UNITS (INPUTS) / BUSINESS PLANS



OUTPUT 3 – BUILDING MANAGEMENT SERVICES

RESOURCE ALLOCATION FOR OUTPUT 3:

OUTPUT					
Provision of a secure, safe and well-maintained building facility and precinct to facilitate the operation of the Parliament and the activities of the Members and other clients.					
	<i>Original Budget 2007-08</i>		<i>Revised Budget 2007-08</i>		<i>Estimate 2008-09</i>
DISCRETIONARY EXPENDITURE					
Parliament House Floor Space Managed	\$5.770m		\$5.957m		\$6.959m
TOTAL OUTPUT EXPENDITURE	\$5.770m	a	\$5.957m	b & c	\$6.959m

Explanation of major variations for Output 3:

- a \$80k Parliament House Security Contract funding 2007-08 ongoing.
- b \$883k Repairs and Maintenance funding for 2008-09.
- c Remaining differences between the budget appropriation relates to a number of variables: corporate services output allocation, CPI parameter adjustments, productivity and efficiency dividends and the 1% EBA increase and DCIS goods and services free of charge.

Please refer to Financial Statement variations in Section 4 for a detailed listing of agency budget variations.

KEY PERFORMANCE MEASURES:

<i>Quantity</i>	<i>Original Target 2007-08</i>		<i>Revised Target 2007-08</i>		<i>Estimate 2008-09</i>
Parliament House floor space managed (square metres)	12 970		12 970		12 970
Chan Building managed from November 2007 until September 2008 – Cabling Relocation (square meters)			7 500		7 500
Quality					
Client satisfaction with service	95%		95%		95%
Maintenance levels in accordance with approved standards as defined in BAMS	100%		100%		100%
Timeliness					
Programmed timeframes and schedules met	90%		90%		85%

Explanation of major variations:

OUTPUT 3 – BUILDING MANAGEMENT SERVICES

SUB-OUTPUT 3.1 Parliament House Floor Space Managed

Description: To provide a secure, safe and well-maintained building facility and precinct to facilitate the operation of the Parliament and the activities of the Members and other clients.

Budget Allocation:

<i>Original Budget 2007-08</i>		<i>Revised Budget 2007-08</i>		<i>Estimate 2008-09</i>
\$5.770M	d & f	\$5.957M	e & f	\$6.959m

Explanation of major variations:

- d \$80k Parliament House Security Contract funding 2007-08 ongoing.
- e \$883k Repairs and Maintenance funding for 2008-09.
- f Remaining differences between the budget appropriation relates to a number of variables: corporate services output allocation, CPI parameter adjustments, productivity and efficiency dividends and the 1% EBA increase and DCIS goods and services free of charge.

Please refer to Financial Statement variations in Section 4 for a detailed listing of agency budget variations.

Services Provided:

- Provision of a secure environment for all building users through effective management of security arrangements
- Management and oversight of all building repairs and maintenance services
- Management and oversight of cleaning services
- Set up and servicing of function rooms
- Management and oversight of landscaping and gardening services
- Management and oversight of building safety standards
- Contract Management for leased facilities within the precinct
- Long-term maintenance plans and replacement of plant and machinery to maintain the functionality of the building
- Energy management
- Works project management and advice.

Performance Measures and Targets:

Performance Measure	Original Target 2007-08		Revised Target 2007-08		Estimate 2008-09
Quantity					
Parliament House space managed (square metres)	12 970		12 970		12 970
Chan Building space managed (square metres)			7 500		7 500
Preventative maintenance visits predicted	130		130		130
Corrective maintenance visits predicted	320		305	g	300
Quality					
Maintenance programs to agreed job standards	100%		98%		100%
Availability of building electromechanical systems (lifts, etc)			70%	h	95%
Compliance with health and safety standards	100%		100%		100%
Client satisfaction with services	95%		95%		95%
Timeliness					
Maintenance completed with agreed timeframes	90%		90%		90%
Responses to client request/call agreed timeframes	90%		95%		90%
Cost					
Security contract (\$ per metre)	50		50		50
Energy (\$ per metre)	45		46		47
Repairs and Maintenance (\$ per metre)	107		119		175
Cleaning contract (\$ per metre)	22		20		20

Explanation of major variations:

- g Corrective maintenance visits include work on the Chan Building.
- h Lift failures have occurred throughout the year. Upgrade of Lift No 1 commences in June 2008 and lifts No 2, 3 & 4 are to be upgraded in 2008-09.

Key Client Service Standards:

- 90% of maintenance completed within agreed timeframes.
- 95% of maintenance programs meet standards.
- 95% availability of building functions (lifts etc).
Minor maintenance requests inspected within 4 hours and where possible, rectified by the following day or earlier.

SECTION 3

PARLIAMENTARY SERVICES - ALLOCATION

RESOURCE ALLOCATION FOR PARLIAMENTARY SERVICES:

Description: To provide a full range of administrative and corporate functions to the department, Members and their Electorate Offices.

Budget Allocation:

<i>Original Budget 2007-08</i>		<i>Revised Budget 2007-08</i>		<i>Estimate 2008-09</i>
\$0.970m	a	\$1.023m	b	\$1.210m

Explanation of major variations:

- a \$42k Funding for the Parliamentary Broadcast of Question Time 2007-08 ongoing.
- b Remaining differences between the budget appropriation relates to a number of variables: CPI parameter adjustments, productivity and efficiency dividends and the 1% EBA increase.

Please refer to Financial Statement variations in Section 4 for a detailed listing of agency budget variations.

Services Provided:

- Administer and provide advice on the full range of Members' entitlements as outlined in the Remuneration Tribunal Determination and Speaker's Determinations including:
 - Management of the payment of salaries and allowances through the DCIS salaries unit;
 - processing and payment of Members' travel and associated entitlements through the METS online database;
 - establishment, management and administration of electorate office premises,
 - including security systems, Minor New Works and Repairs and Maintenance;
 - Information technology and telecommunication services for Parliament House and electorate offices;
 - office services including supply of furniture, equipment, stationery and general supplies; and
 - Acquisition and maintenance of Members' vehicles.
- Provide specialist advice to the Speaker, the Departmental Executive and the Department's Management Board on a wide range of administrative and corporate functions;

- Provides all human resource management and development, financial management and office services to the Department and to Members and Electorate Officers;
- Manages Work Health, Occupational Health and Safety and Equal Employment Opportunity programs within the department; and
- Manage the Department's records management systems.

Performance Measures and Targets:

Performance Measure	Original Target 2007-08	Revised Target 2007-08	Estimate 2008-09
Quantity			
Number of staff in the Department	97	96	96
Number of Members and Electorate Offices	50	50	50
Quality			
Staff satisfaction with level of service provided	90%	90%	90%
Timeliness			
Services delivered within agreed timeframes	95%	95%	95%

Explanation of major variations: N/A

Key Client Service Standards:

- A response to requests for advice and information across the range of services is timely, helpful and accurate.
- Services are provided in a timely manner
- Information is made available to assist in the effective functioning of corporate services across the department.

SECTION 4 FINANCIAL STATEMENTS

OPERATING STATEMENT

	2007-08 Original Budget	Ref	2007-08 Revised Estimate	Ref	2008-09 Budget
	\$000		\$000		\$000
INCOME					
Output Revenue	18 414	OP1	18 669	OP2	20 043
Other Agency Revenue	37	OP3	55	OP4	21
Goods and Services Received Free of Charge	1 727	OP5	1 855		1 855
Miscellaneous Revenue	5		5		5
TOTAL INCOME	20 183		20 584		21 924
EXPENSES					
Employee Expenses	11 667	OP6	11 833	OP7	12 246
<i>Administrative Expenses</i>					
Purchases of Goods and Services	5 345	OP8	5 485	OP9	5 496
Repairs and Maintenance	1 444	OP10	1 537	OP11	2 327
Depreciation and Amortisation	1 785		1 785		1 785
DCIS Services Free of Charge	1 727	OP5	1 855		1 855
TOTAL EXPENSES	21 968		22 495		23 709
NET SURPLUS/DEFICIT(-)	- 1 785		- 1 911		- 1 785

OPERATING STATEMENT - VARIATIONS

OP1	\$255k	
	\$ 133k	Members Base Salary Increase (RTD) 2007/08
	\$ 80k	Parliament House Security Contract 2007/08
	\$ 42k	Parliamentary Broadcast of Question Time 2007/08
OP2	\$1374k	
	-\$ 350k	Statehood Steering Committee funding from 2004-05 ceased in 2007/08
	\$ 600k	Ongoing funding for Statehood Steering Committee 2007/08
	\$ 883k	Repairs and Maintenance Program 2007/08
	\$ 80k	Parliament House Security Contract 2007/08
	-\$ 33k	NTT Superannuation on-costs 2007/08
	-\$ 93k	Recording of WIP transfer from 2006/07 to 2007/08
		<i>Parameters & Dividends:</i>
	\$ 160k	NTT CPI parameter adjustments in prior years 2004/05 1.6% to 2.5% (CD BC05/6), 2006/07 (CD BC05/7) applied to 2008/09
	-\$ 153k	NTT 2% Productivity Dividend in 2004/05 applied to 2008/09
	\$ 164k	NTT CPI parameter increase 2007/08 - EBA 1%, CPI 0.9% to 3.4% applied to 2008/09
	\$ 117k	NTT 1% Efficiency Dividend 2006/07 applied to 2008/09 (CD BC05/07 & CD07/02)
OP3	\$18k	
	\$ 18k	Parliamentary Public Works Environment Conference Revenue 2007/08
OP4	-\$34k	
	-\$ 18k	Parliamentary Public Works Environment Conference Revenue 2007/08
	-\$16k	Revenue and expense adjustment to align with anticipated receipts 2007/08
OP5	\$128k	
	\$ 128k	DCIS Services Free Of Charge adjustment 2007/08
OP6	\$166k	
	\$ 133k	Members Base Salary Increase (RTD) 2007/08
	\$ 33k	NTT Superannuation on-costs applied to 2007/08
OP7	\$413k	
	\$ 350k	Ongoing funding for Statehood Steering Committee 2007/08
	-\$ 33k	NTT Superannuation on-costs 2007/08
	-\$ 230k	Statehood Steering Committee funding from 2004-05 ceased in 2007/08
		<i>Parameters & Dividends:</i>
	\$ 119k	NTT CPI parameter increase 2007/08 - EBA 1%, CPI 0.9% to 3.4%
	\$ 10k	Outturn prices and EBA adjustment 2004/05 applied to 2008/09
	\$ 197k	NTT CPI parameter adjustments in prior years 2004/05 (CD BC05/6) to 2006/07 (CD BC05/7) applied to 2008/09
	\$ 107k	NTT 1% Efficiency Dividend 2006/07 applied to 2008/09 (CD BC05/07 & CD07/02)
	-\$ 107k	NTT 2% Productivity Dividend in 2004/05 applied to 2008/09
OP8	\$140k	
	\$ 18k	Parliamentary Public Works Environment Conference Revenue 2007/08
	\$ 80k	Parliament House Security Contract 2007/08
	\$ 42k	Parliamentary Broadcast of Question Time 2007/08
OP9	\$11k	
	\$ 250k	Ongoing funding for Statehood Steering Committee 2007/08
	\$ 80k	Parliament House Security Contract 2007/08
	-\$ 18k	Parliamentary Public Works Environment Conference Revenue 2007/08
	-\$16k	Revenue and expense adjustment to align with anticipated receipts 2007/08
	-\$ 120k	Statehood Steering Committee funding from 2004-05 ceased in 2007/08
		<i>Parameters & Dividends:</i>
	\$ 45k	NTT CPI parameter increase 2007/08 - EBA 1%, CPI 0.9% to 3.4% applied to 2008/09
	\$ 10k	NTT 1% Efficiency Dividend 2006/07 applied to 2008/09 (CD BC05/07 & CD07/02)
	-\$ 184k	NTT 2% Productivity Dividend in 2004/05 applied to 2008/09
	\$ 1k	Outturn prices and EBA adjustment 2004/05 applied to 2008/09
	-\$ 37k	NTT CPI parameter adjustments in prior years 2004/05 (CD BC05/6) to 2006/07 (CD BC05/7) applied to 2008/09

OP10	\$93k	
	\$ 93k	Recording of WIP transfer from 2006/07 to 2007/08
OP11	\$790k	
	\$ 883k	Repairs and Maintenance Program 2007/08
	-\$ 93k	Recording of WIP transfer from 2006/07 to 2007/08

**DEPARTMENT OF THE LEGISLATIVE ASSEMBLY
BALANCE SHEET**

	2007-08 Original Budget	Ref	2007-08 Revised Estimate	Ref	2008-09 Budget
	\$000		\$000		\$000
ASSETS					
Cash and Deposits	137		301		301
Receivables	151		239		239
Prepayments	43				
Inventories			3		3
Property, Plant and Equipment	151 676		152 163		150 419
Other Assets	5				
TOTAL ASSETS	152 012		152 706		150 962
LIABILITIES					
Deposits Held			1		1
Creditors and Accruals	296		465		465
Borrowings and Advances					
Provisions	980		1 035		1 035
Other Liabilities					
TOTAL LIABILITIES	1 276		1 501		1 501
NET ASSETS	150 736		151 205		149 461
EQUITY					
<i>Capital</i>					
Opening Balance	142 065		142 134		142 669
Equity Injections/Withdrawals	41	BAL1	535	BAL2	41
Reserves	19 017		19 017		19 017
<i>Accumulated Funds</i>					
Opening Balance	- 8 602		- 8 570		- 10 481
Current Year Surplus/(Deficit)	- 1 785		- 1 911		- 1 785
TOTAL EQUITY	150 736		151 205		149 461

BALANCE SHEET - VARIATIONS:

BAL1	\$ 494k	
	\$ 494k	Represents works completed by DPI as Minor New Works projects and transferred to LA as Assets
BAL2	-\$ 494k	
	-\$ 494k	Removal of 2007/08 completed Minor New Works projects at BAL1

DEPARTMENT OF THE LEGISLATIVE ASSEMBLY

CASH FLOW STATEMENT

	2007-08 Original Budget	Ref	2007-08 Revised Estimate	Ref	2008-09 Budget
	\$000		\$000		\$000
CASH FLOWS FROM OPERATING ACTIVITIES					
Operating Receipts					
Receipts from Sales of Goods and Services					
Output Revenue Received	18 414	CASH1	18 669	CASH 2	20 043
Other Agency Receipts	42	CASH3	60	CASH4	26
Interest Received					
Total Operating Receipts	18 456		18 729		20 069
Operating Payments					
Payments to Employees	11 667	CASH5	11 800	CASH6	12 246
Payments for Goods and Services	6 789	CASH7	6 929	CASH8	7 823
Interest Paid					
Total Operating Payments	18 456		18 729		20 069
Net Cash from Operating Activities					
CASH FLOWS FROM INVESTING ACTIVITIES					
Investing Receipts					
Proceeds from Asset Sales	2		2		2
Repayment of Advances					
Total Investing Receipts	2		2		2
Investing Payments					
Purchases of Assets	43		43		43
Advances and Investing Payments					
Total Investing Payments	43		43		43
Net Cash from Investing Activities	- 41		- 41		- 41
CASH FLOWS FROM FINANCING ACTIVITIES					
Financing Receipts					
Deposits Received					
Capital Appropriation	41		41		41
Equity Injection					
Total Financing Receipts	41		41		41
Financing Payments					
Finance Lease Payments					
Equity Withdrawals					
Total Financing Payments					
Net Cash from Financing Activities	41		41		41
Net Increase in Cash Held					
Cash at Beginning of Financial Year	137		301		301
CASH AT END OF FINANCIAL YEAR	137		301		301

CASH FLOW STATEMENT - VARIATIONS:

CASH1	\$ 255k	
	\$ 133k	Members Base Salary Increase (RTD) 2007/08
	\$ 80k	Parliament House Security Contract 2007/08
	\$ 42k	Parliamentary Broadcast of Question Time 2007/08
CASH2	\$1 374k	
	-\$ 350k	Statehood Steering Committee funding from 2004-05 ceased in 2007/08
	\$ 600k	Ongoing funding for Statehood Steering Committee 2007/08
	\$ 883k	Repairs and Maintenance Program 2007/08
	\$ 80k	Parliament House Security Contract 2007/08
	-\$ 33k	NTT Superannuation on-costs 2007/08
	-\$ 93k	Recording of WIP transfer from 2006/07 to 2007/08
	<i>Parameters & Dividends:</i>	
	\$ 160k	NTT CPI parameter adjustments in prior years 2004/05 1.6% to 2.5% (CD BC05/6), 2006/07 (CD BC05/7) applied to 2008/09
	-\$ 153k	NTT 2% Productivity Dividend in 2004/05 applied to 2008/09
	\$ 164k	NTT CPI parameter increase 2007/08 - EBA 1%, CPI 0.9% to 3.4% applied to 2008/09
	\$ 117k	NTT 1% Efficiency Dividend 2006/07 applied to 2008/09 (CD BC05/07 & CD07/02)
CASH3	\$ 18k	
	\$ 18k	Parliamentary Public Works Environment Conference Revenue 2007/08
CASH4	-\$ 34k	
	-\$ 18k	Parliamentary Public Works Environment Conference Revenue 2007/08
	-\$16k	Revenue and expense adjustment to align with anticipated receipts 2007/08
CASH5	\$ 133k	
	\$ 133k	Members Base Salary Increase (RTD) 2007/08
CASH6	\$ 446k	
	\$ 350k	Ongoing funding for Statehood Steering Committee 2007/08
	-\$ 230k	Statehood Steering Committee funding from 2004-05 ceased in 2007/08
	<i>Parameters & Dividends:</i>	
	\$ 119k	NTT CPI parameter increase 2007/08 - EBA 1%, CPI 0.9% to 3.4%
	\$ 10k	Outturn prices and EBA adjustment 2004/05 applied to 2008/09
	\$ 197k	NTT CPI parameter adjustments in prior years 2004/05 (CD BC05/6) to 2006/07 (CD BC05/7) applied to 2008/09
	\$ 107k	NTT 1% Efficiency Dividend 2006/07 applied to 2008/09 (CD BC05/07 & CD07/02)
	-\$ 107k	NTT 2% Productivity Dividend in 2004/05 applied to 2008/09
CASH7	\$ 140k	
	\$ 18k	Parliamentary Public Works Environment Conference Revenue 2007/08
	\$ 80k	Parliament House Security Contract 2007/08
	\$ 42k	Parliamentary Broadcast of Question Time 2007/08
CASH8	\$ 894k	
	\$ 883k	Repairs and Maintenance Program 2007/08
	\$ 250k	Ongoing funding for Statehood Steering Committee 2007/08
	\$ 80k	Parliament House Security Contract 2007/08
	-\$ 18k	Parliamentary Public Works Environment Conference Revenue 2007/08
	-\$16k	Revenue and expense adjustment to align with anticipated receipts 2007/08
	-\$ 120k	Statehood Steering Committee funding from 2004-05 ceased in 2007/08
	<i>Parameters & Dividends:</i>	
	\$ 45k	NTT CPI parameter increase 2007/08 - EBA 1%, CPI 0.9% to 3.4% applied to 2008/09
	\$ 10k	NTT 1% Efficiency Dividend 2006/07 applied to 2008/09 (CD BC05/07 & CD07/02)
	-\$ 184k	NTT 2% Productivity Dividend in 2004/05 applied to 2008/09
	\$ 1k	Outturn prices and EBA adjustment 2004/05 applied to 2008/09
	-\$ 37k	NTT CPI parameter adjustments in prior years 2004/05 (CD BC05/6) to 2006/07 (CD BC05/7) applied to 2008/09

Budget By Output

LEGISLATIVE ASSEMBLY OF THE NORTHERN TERRITORY 2008-09 BUDGET BY OUTPUT

OUTPUT GROUP		OUTPUT GROUP 1											OUTPUT GROUP 2					OUTPUT GROUP 3						
		ASSEMBLY SERVICES											MEMBER AND CLIENT SERVICES					BUILDING SPACE						
Sub Output			Sub output 1.1		Sub output 1.2		Sub output 1.3		Sub output 1.4		Sub output 1.5		Sub output 1.6		Total	Sub output 2.1		Sub output 2.2		Total	Sub output 3.1		Total	
			Procedural Advice and Chamber Support		Record of Proceedings and debate		Committee Support Services and Advice		Public Relations & Education		Statehood Steering Committee		Other Assembly Services			Electorate Office Support Service		Members Services			Managed Building Space			
Business Unit	Staff	Budget	\$000		\$000		\$000		\$000		\$000		\$000		\$000	\$000		\$000		\$000	\$000		\$000	\$000
Office of the Speaker	2	269	108	40%					161	60%					269									269
CPA	-	74							74	100%					74									74
Senior Territorian	-	27											27	100%	27									27
Office of the Clerk	5	870	609	70%					173	20%					782		44	5%	44	44	5%	44		870
Table Office	3	391	235	60%	117	30%			39	10%					391									391
Hansard	5	480	24	5%	432	90%			24	5%					480									480
Committees	6.5	740					740	100%							740									740
Special Projects	-	16											16	100%	16									16
Statehood Steering Committee	4	600									600	100%			600									600
Parliamentary Liaison	3	264							264	100%					264									264
Electorate Offices	29	3425													3425	100%				3425				3425
Members Services	25	7156															7156	100%	7156					7156
Building Services	2	453																			453	100%	453	453
Technical Services	2	4896																			4896	100%	4896	4896
Security Services	1	983																			983	100%	983	983
<i>Corporate Services Output Allocation:</i>																								
Parliamentary Services	9	1210	73	6%	73	6%	73	6%	48	4.0%	73	6%	24	2.0%	364	242	20%	242	20%	484	362	30%	362	1210
DCIS Property Services		1120														1120	100%			1120				1120
DCIS Other		735	44	6%	44	6%	44	6%	44	6%	44	6%			220	147	20%	147	20%	294	221	30%	221	735
TOTAL	96.0	23709	1093		666		857		827		717		67		4227	4934		7589		12523	6959		6959	23709

**LEGISLATIVE ASSEMBLY OF THE NORTHERN TERRITORY
2007-08 REVISED BUDGET BY OUTPUT (AS PER BP3)**

Output Group		OUTPUT GROUP 1												OUTPUT GROUP 2				OUTPUT GROUP 3						
Activity		ASSEMBLY SERVICES												MEMBER AND CLIENT SERVICES				BUILDING SPACE						
Sub Output #			Sub output 1.1		Sub output 1.2		Sub output 1.3		Sub output 1.4		Sub output 1.5		Sub output 1.6		Total	Sub output 2.1		Sub output 2.2		Total	Sub output 3.1		Total	Total
Sub Output			Procedural Advice and Chamber Support		Record of Proceedings and debate		Committee Support Services and Advice		Public Relations & Education		Statehood Steering Committee		Other Assembly Services			Electorate Office Support Service		Members Services			Managed Building Space			
Business Unit	Staff	Budget	\$000		\$000		\$000		\$000		\$000		\$000		\$000	\$000		\$000		\$000	\$000		\$000	\$000
Office of the Speaker	2	260	104	40%					156	60%					260									260
CPA	-	75							75	100%					75									75
Senior Territorian	-	28											28	100%	28									28
Office of the Clerk	5	826	578	70%					166	20%					744			41	5%	41	41	5%	41	826
Table Office	3	378	227	60%	113	30%			38	10%					378									378
Hansard	5	451	23	5%	405	90%			23	5%					451									451
Committees	7	704					704	100%							704									704
Special Projects	-	34											34	100%	34									34
Statehood Steering Committee	3	594									594	100%			594									594
Parliamentary Liaison	3	249							249	100%					249									249
Electorate Offices	28.5	3474													3474	100%				3474				3474
Members Services	25	7156															7156	100%	7156					7156
Building Services	2	467																			467	100%	467	467
Technical Services	3	4016																			4016	100%	4016	4016
Security Services	1	905																			905	100%	905	905
Corporate Services Output Allocation:																								
Parliamentary Services	10	1023	61	6%	61	6%	61	6%	41	4%	61	6%	21	2%	306	205	20%	205	20%	410	307	30%	307	1023
DCIS Property Services		1120														1120	100%			1120				1120
DCIS Other		735	44	6%	44	6%	44	6%	44	6%	44	6%			220	147	20%	147	20%	294	221	30%	221	735
TOTAL	97.0	22495	1037		623		809		792		699		83		4043	4946		7549		12495	5957		5957	22495

**LEGISLATIVE ASSEMBLY OF THE NORTHERN TERRITORY
2007-08 ORIGINAL BUDGET BY OUTPUT**

Output Group		OUTPUT GROUP 1													OUTPUT GROUP 2				OUTPUT GROUP 3						
Activity		ASSEMBLY SERVICES													MEMBER AND CLIENT SERVICES				BUILDING SPACE						
Sub Output #			Sub output 1.1		Sub output 1.2		Sub output 1.3		Sub output 1.4		Sub output 1.5		Sub output 1.6		Total	Sub output 2.1		Sub output 2.2		Total	Sub output 3.1		Total	Total	
Sub Output			Procedural Advice and Chamber Support		Record of Proceedings and debate		Committee Support Services and Advice		Public Relations & Education		Statehood Steering Committee		Other Assembly Services			Electorate Office Support Service		Members Services			Managed Building Space				
Business Unit	FTE	Budget	\$000		\$000		\$000		\$000		\$000		\$000		\$000	\$000		\$000		\$000	\$000		\$000	\$000	
Office of the Speaker	2	246	98	40%					98	40%			50	20%	246										246
CPA	-	84							84	100%					84										84
Portrait of a Senior Territorian	-	28											28	100%	28										28
Office of the Clerk	5	829	580	70%					109	13%			58	7%	747			41	5%	41	41	5%	41		829
Table Office	3	379	227	60%	114	30%			38	10%					379										379
Hansard	5	485	24	5%	437	90%			24	5%					485										485
Committees	7	638					638	100%							638										638
Special Projects		51											51	100%	51										51
Statehood Steering Committee	3	602									602	100%			602										602
Parliamentary Research & Education	4	283							283	100%					283										283
Electorate Offices	28	3369														3369	100%			3369					3369
Members Services	25	7023																7023	100%	7023					7023
Building Services	4	1250																			1250	100%	1250		1250
Technical Services	3	4004																			4004	100%	4004		4004
<i>Corporate Services Output Allocation:</i>																									
Parliamentary Services	10	970	58	6%	58	6%	58	6%	39	4.0%	58	6%	19	2.0%	290	194	20%	194	20%	388	292	30%	292		970
DCIS Property Services		1120														1120	100%			1120					1120
DCIS Other		607	36	6%	36	6%	36	6%	24	4%	36	6%	12	2%	180	122	20%	122	20%	244	183	30%	183		607
TOTAL	99.0	21968	1023		645		732		699		696		218		4013	4805		7380		12185	5770		5770		21968