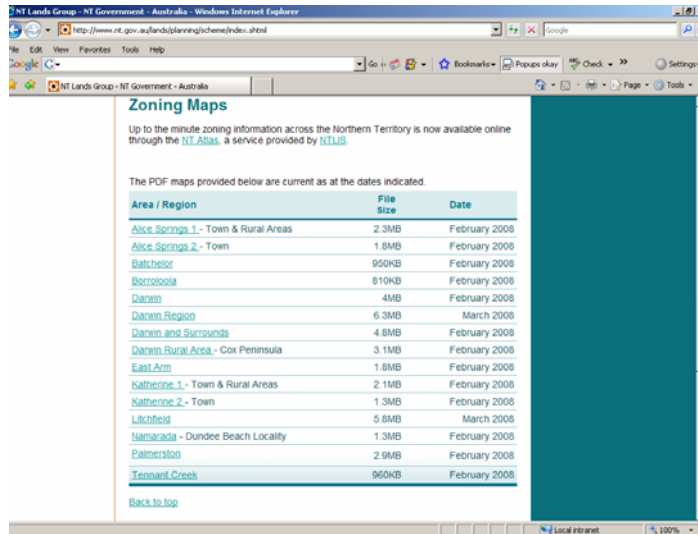


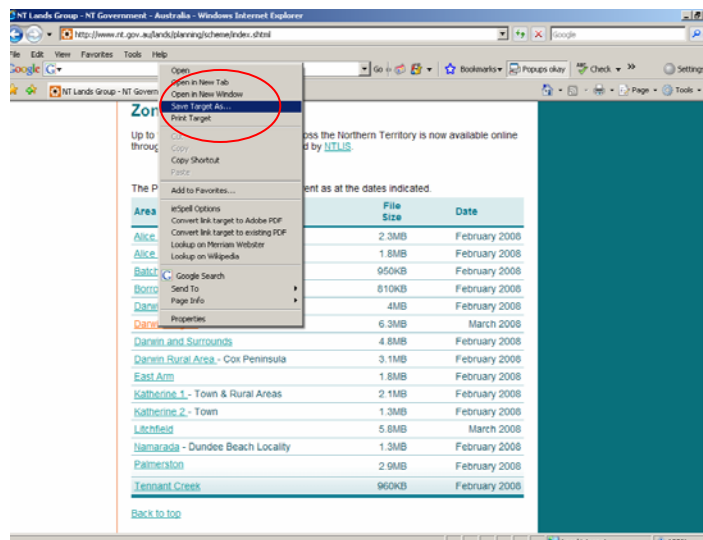
Zoning Maps

If you are experiencing problems viewing the zoning maps from the website please try the following:

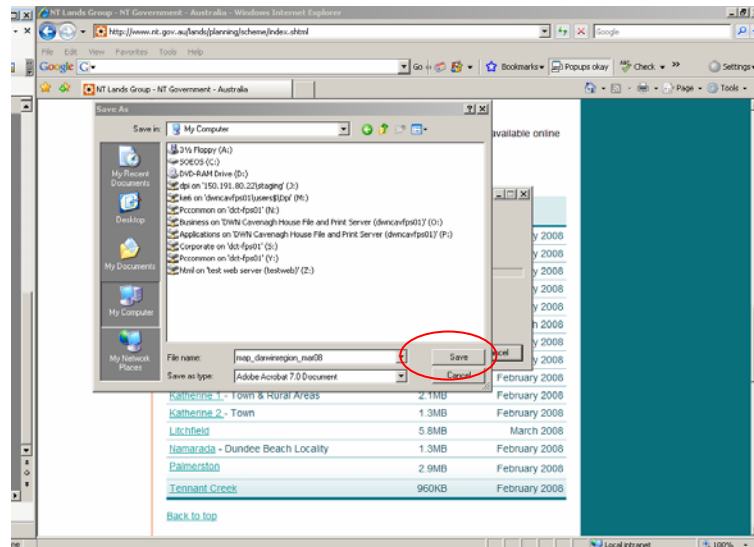
1. Check that you are using Acrobat version 5.0 or higher.
2. From the NT Planning Scheme webpage (www.nt.gov.au/planning/scheme) choose the map that you would like to view.



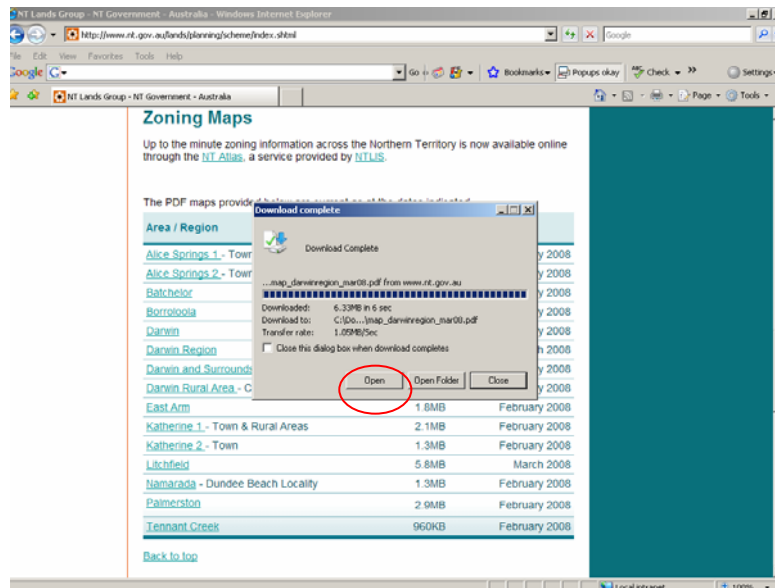
3. Right-click on the map you would like to view and select "Save Target As"



4. Select the location on your computer to save the file and click “Save”



5. When download is complete press “Open” (Please note that it may take a while to open the document)



If you continue to experience problems opening or viewing the zoning maps please contact Planning Branch at planning@nt.gov.au