



# Recorded Crime June Quarter 2008 Northern Territory – key findings\*

## Explanatory Notes

*Largely as a result of its small population, statistics in the Northern Territory can be highly volatile with large swings from one period to the next.*

*Consequently recorded crime statistics are presented over an extended period to present the current period's data within the context of any longer term trends.*

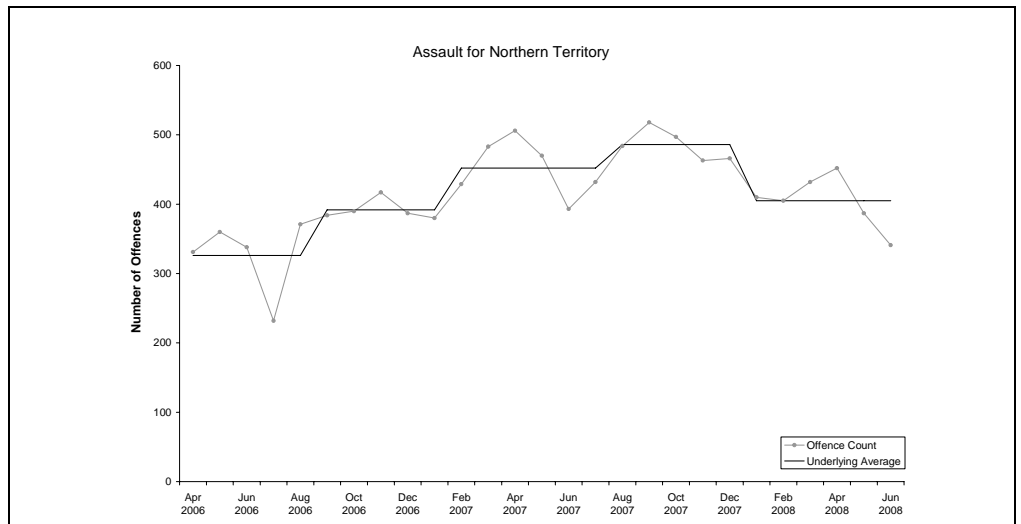
*The underlying average smooths out volatility and identifies major changes in the level of crime.*

## ASSAULT

**Underlying average** – The underlying average level of *assault* has ranged between 326 and 486 offences per month during the past nine quarters. Its current level of **405 per month** is in the middle of the range.

**Trend** – Over the past 12 months a downward trend was identified.

**Quarterly comparisons** – There were 1180 *assault* offences recorded in the current quarter, a **decrease of 5% (67)** from the previous quarter and a decrease of 14% (189) from the same quarter the previous year.

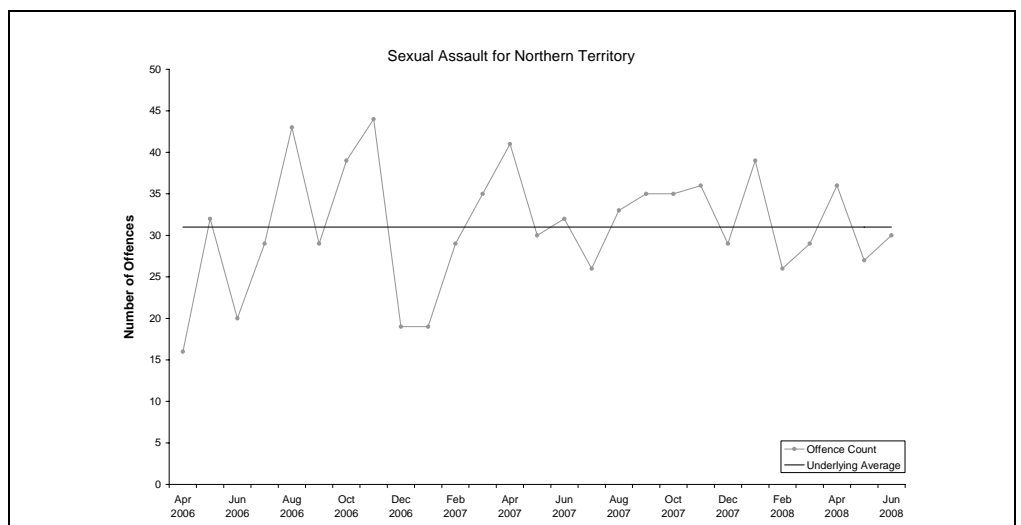


## SEXUAL ASSAULT

**Underlying average** – The underlying average level of *sexual assault* has remained stable at **31 offences per month** during the past nine quarters.

**Trend** – Over the past 12 months no trend was identified.

**Quarterly comparisons** – There were 93 *sexual assault* offences recorded in the current quarter, a **decrease of 1% (1)** from the previous quarter and a decrease of 10% (10) from the same quarter the previous year.



\* Source: The Northern Territory Quarterly Crime & Justice Statistics, Issue 24: June Quarter 2008



# Recorded Crime June Quarter 2008 Northern Territory – key findings\*

## Explanatory Notes

*Largely as a result of its small population, statistics in the Northern Territory can be highly volatile with large swings from one period to the next.*

*Consequently recorded crime statistics are presented over an extended period to present the current period's data within the context of any longer term trends.*

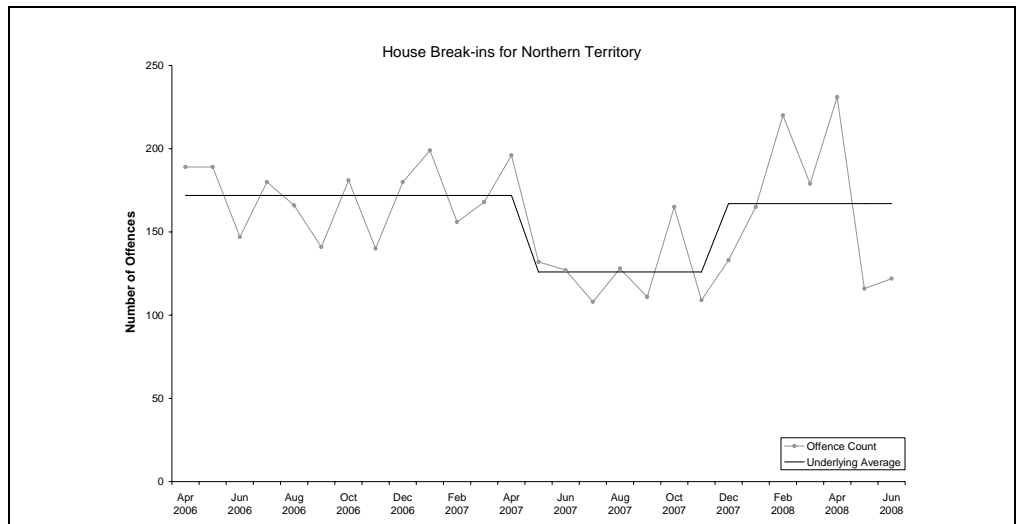
*The underlying average smooths out volatility and identifies major changes in the level of crime.*

## HOUSE BREAK-INS

**Underlying average** – The underlying average level of *house break-ins* has ranged between 126 and 172 offences per month during the past nine quarters. Its current level of **167 per month** is at the higher end of the range.

**Trend** – Over the past 12 months no trend was identified.

**Quarterly comparisons** – There were 469 *house break-ins* recorded in the current quarter, a **decrease of 17% (95)** from the previous quarter, but an increase of 3% (14) from the same quarter the previous year.

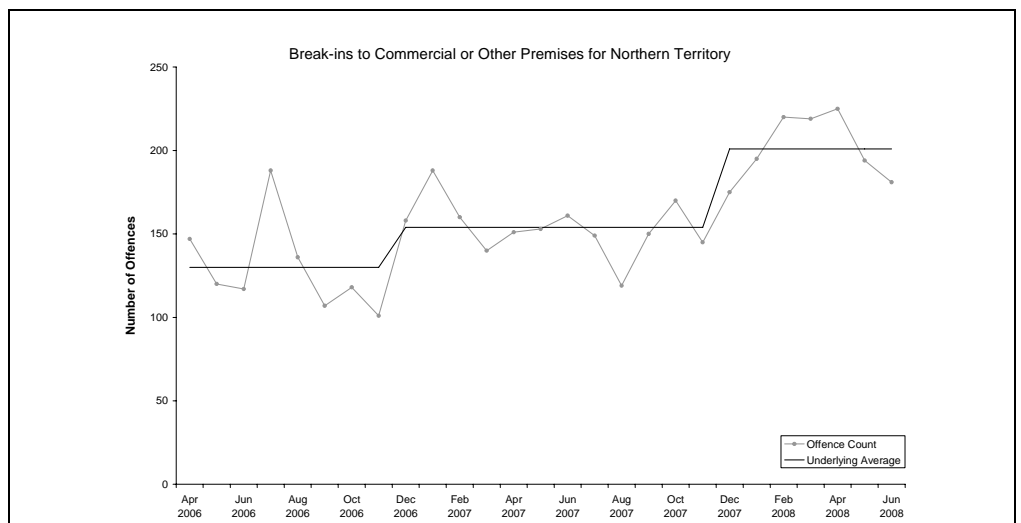


## BREAK-INS TO COMMERCIAL OR OTHER PREMISES

**Underlying average** – The underlying average level of *break-ins to commercial or other premises* has ranged between 130 and 201 offences per month during the past nine quarters. Its current level of **201 per month** is at the higher end of the range.

**Trend** – Over the past 12 months an upward trend was identified.

**Quarterly comparisons** – There were 600 *break-ins to commercial or other premises* recorded in the current quarter, a **decrease of 5% (34)** from the previous quarter, but an increase of 29% (135) from the same quarter the previous year.



\* Source: The Northern Territory Quarterly Crime & Justice Statistics, Issue 24: June Quarter 2008



# Recorded Crime June Quarter 2008 Northern Territory – key findings\*

## Explanatory Notes

*Largely as a result of its small population, statistics in the Northern Territory can be highly volatile with large swings from one period to the next.*

*Consequently recorded crime statistics are presented over an extended period to present the current period's data within the context of any longer term trends.*

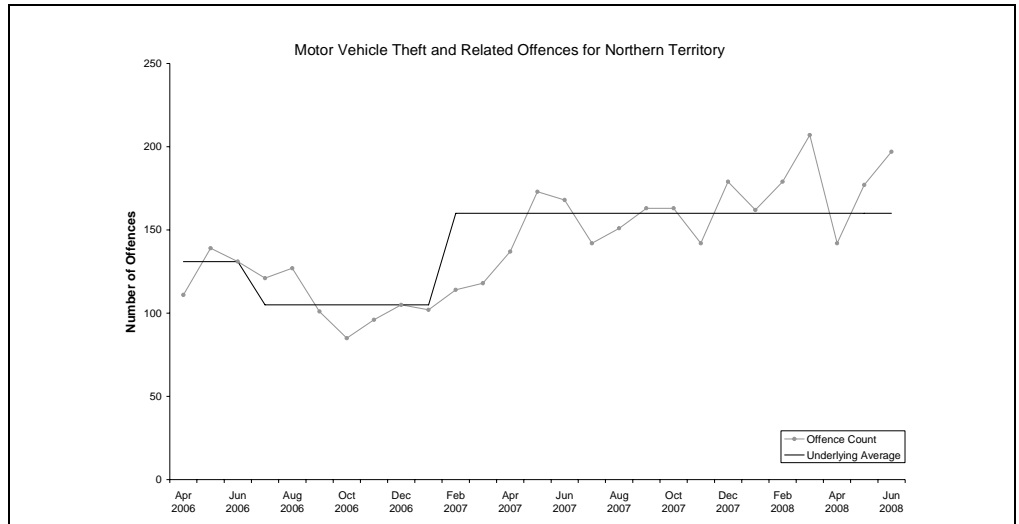
*The underlying average smooths out volatility and identifies major changes in the level of crime.*

## MOTOR VEHICLE THEFT AND RELATED OFFENCES

**Underlying average** – The underlying average level of *motor vehicle theft and related offences* has ranged between 105 and 160 offences per month during the past nine quarters. Its current level of **160 per month** is at the higher end of the range.

**Trend** – Over the past 12 months no trend was identified.

**Quarterly comparisons** – There were 516 *motor vehicle theft and related offences* recorded in the current quarter, a **decrease of 6% (32)** from the previous quarter, but an increase of 8% (38) from the same quarter the previous year.



\* Source: The Northern Territory Quarterly Crime & Justice Statistics, Issue 24: June Quarter 2008



# Recorded Crime June Quarter 2008

## Northern Territory – key findings\*

### Explanatory Notes

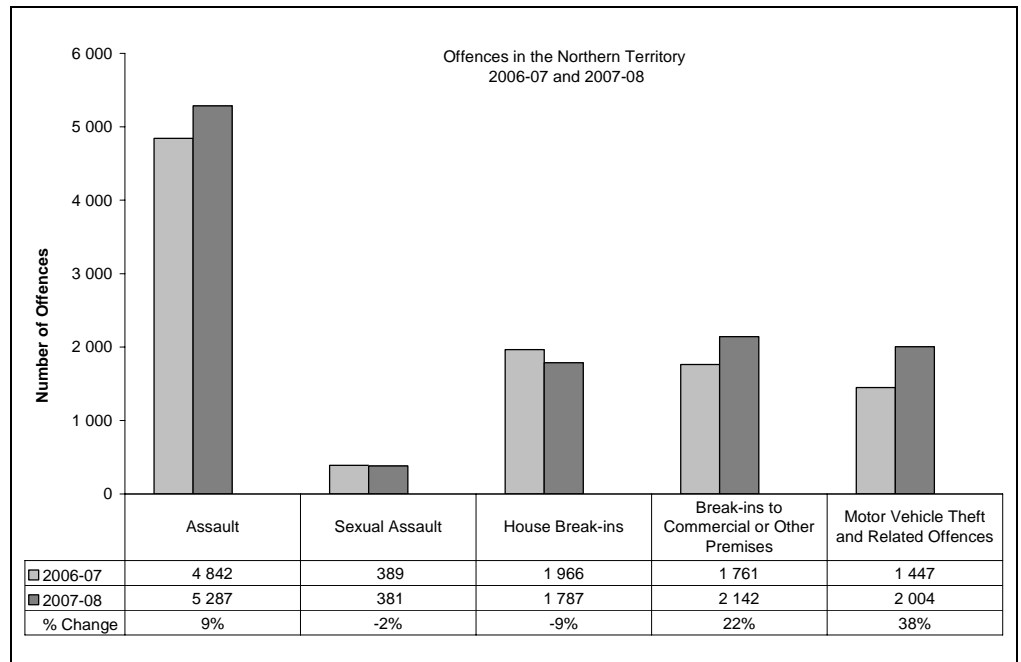
*Largely as a result of its small population, statistics in the Northern Territory can be highly volatile with large swings from one period to the next.*

*Consequently recorded crime statistics are presented over an extended period to present the current period's data within the context of any longer term trends.*

*The underlying average smooths out volatility and identifies major changes in the level of crime.*

### TWELVE-MONTH COMPARISON

Twelve-month figures provide comparable information on how crime has tracked from one 12 month period to the next.



#### Assault

During 2007-08, a total of 5 287 *assault* offences were recorded, **9% (445) more** than the previous 12 months.

#### Sexual Assault

During 2007-08, a total of 381 *sexual assault* offences were recorded, **2% (8) less** than the previous 12 months.

#### House Break-ins

During 2007-08, a total of 1 787 *house break-ins* were recorded, **9% (179) less** than the previous 12 months.

#### Break-ins to Commercial or Other Premises

During 2007-08, a total of 2 142 *break-ins to commercial or other premises* were recorded, **22% (381) more** than the previous 12 months.

#### Motor Vehicle Theft and Related Offences

During 2007-08, a total of 2 004 *motor vehicle theft and related offences* were recorded, **38% (557) more** than the previous 12 months.

\* Source: The Northern Territory Quarterly Crime & Justice Statistics, Issue 24: June Quarter 2008



# Recorded Crime June Quarter 2008

## Northern Territory – key findings\*

### Explanatory Notes

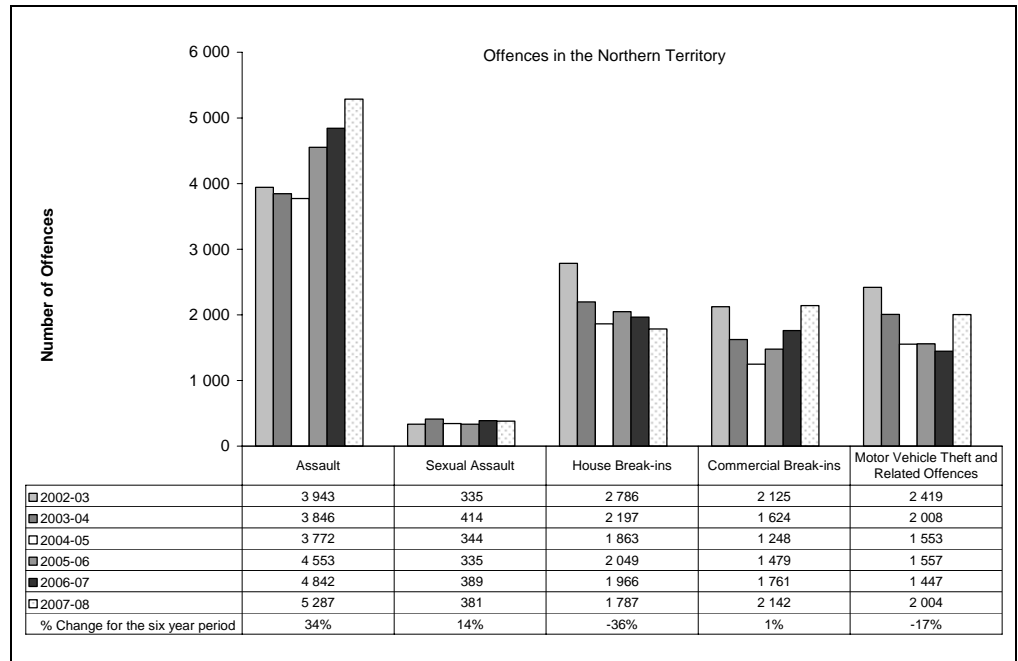
Largely as a result of its small population, statistics in the Northern Territory can be highly volatile with large swings from one period to the next.

Consequently recorded crime statistics are presented over an extended period to present the current period's data within the context of any longer term trends.

The underlying average smooths out volatility and identifies major changes in the level of crime.

### SIX YEAR DATA

Data presented over a six year period provides information to see how recorded crimes have tracked in the longer run.



#### Assault

In late 2004, the Northern Territory Police launched their Violent Crime Reduction Strategy, with a consequential increase in the number of recorded Assault offences in 2005 and subsequent years.

These increases in Assaults largely reflect the impact of operational changes the Police have made in the reporting and recording of domestic violence related Assaults.

During 2007-08, there were 5 287 recorded *assault* offences, **34% (1 344) more** than in 2002-03.

#### Sexual Assault

During 2007-08, there were 381 recorded *sexual assault* offences, **14% (46) more** than in 2002-03.

#### House Break-ins

During 2007-08, there were 1 787 recorded *house break-in* offences, **36% (999) less** than in 2002-03.

#### Commercial Break-ins

During 2007-08, there were 2 142 recorded *commercial break-in* offences, **1% (17) more** than in 2002-03.

#### Motor Vehicle Theft and Related Offences

During 2007-08, there were 2 004 recorded *motor vehicle theft and related offences*, **17% (415) less** than in 2002-03.

\* Source: The Northern Territory Recorded Crime data extract for June Quarter 2008



### Explanatory Notes

*Largely as a result of its small population, statistics in the Northern Territory can be highly volatile with large swings from one period to the next.*

*Consequently recorded crime statistics are presented over an extended period to present the current period's data within the context of any longer term trends.*

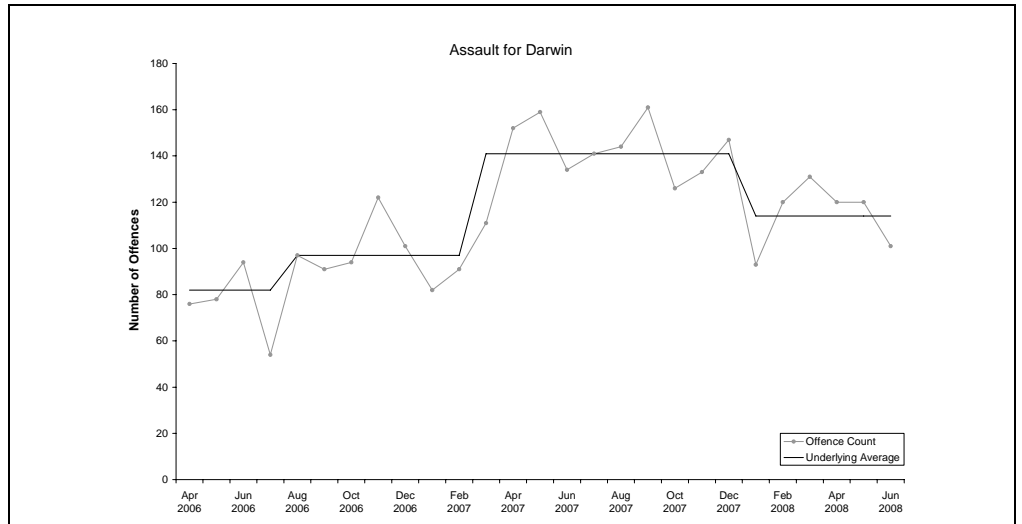
*The underlying average smooths out volatility and identifies major changes in the level of crime.*

### ASSAULT

**Underlying average** – The underlying average level of *assault* has ranged between 82 and 141 offences per month during the past nine quarters. Its current level of **114 per month** is in the middle of the range.

**Trend** – Over the past 12 months a downward trend was identified.

**Quarterly comparisons** – There were 341 *assault* offences recorded in the current quarter, a **decrease of 1% (3)** from the previous quarter and a decrease of 23% (104) from the same quarter the previous year.

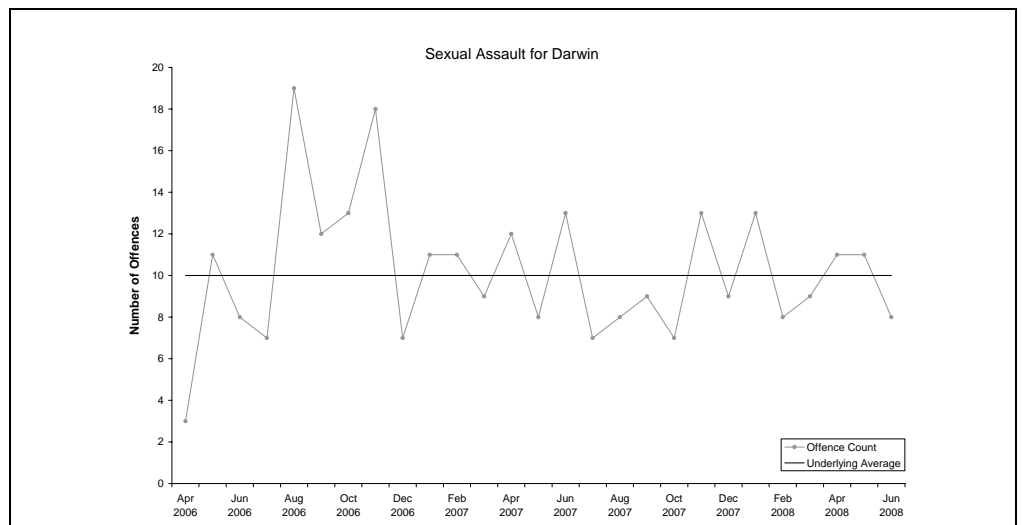


### SEXUAL ASSAULT

**Underlying average** – The underlying average level of *sexual assault* has remained stable at **10 offences per month** during the past nine quarters.

**Trend** – Over the past 12 months no trend was identified.

**Quarterly comparisons** – There were 30 *sexual assault* offences recorded in the current quarter, **no change** from the previous quarter, but a decrease of 9% (3) from the same quarter the previous year.



\* Source: The Northern Territory Quarterly Crime & Justice Statistics, Issue 24: June Quarter 2008



### Explanatory Notes

*Largely as a result of its small population, statistics in the Northern Territory can be highly volatile with large swings from one period to the next.*

*Consequently recorded crime statistics are presented over an extended period to present the current period's data within the context of any longer term trends.*

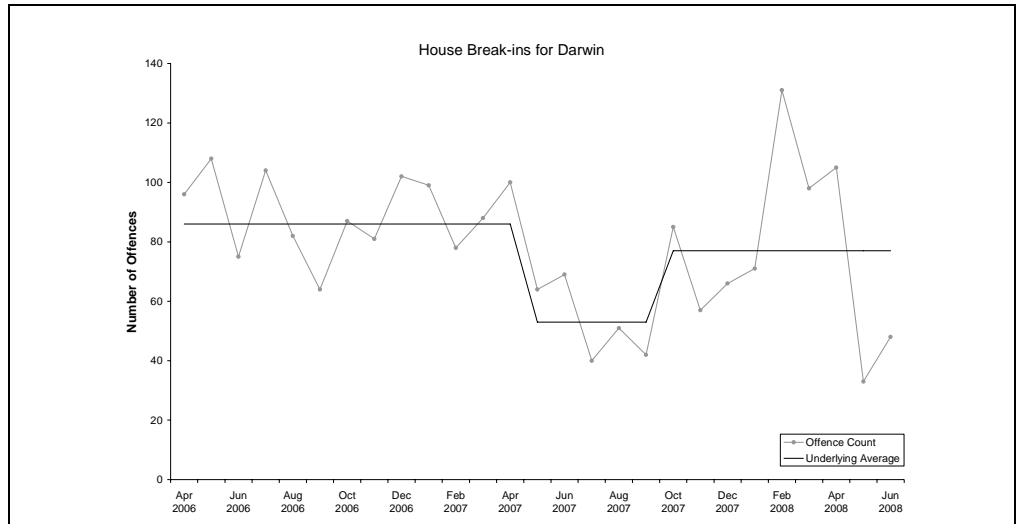
*The underlying average smooths out volatility and identifies major changes in the level of crime.*

### HOUSE BREAK-INS

**Underlying average** – The underlying average level of *house break-ins* has ranged between 53 and 86 offences per month during the past nine quarters. Its current level of **77 per month** is in the middle of the range.

**Trend** – Over the past 12 months no trend was identified.

**Quarterly comparisons** – There were 186 *house break-ins* recorded in the current quarter, a **decrease of 38% (114)** from the previous quarter and a decrease of 20% (47) from the same quarter the previous year.

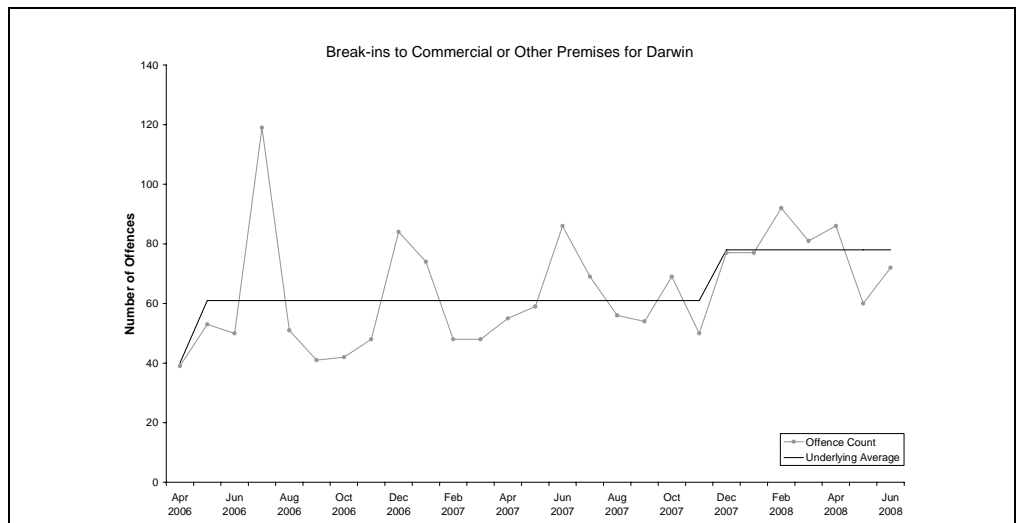


### BREAK-INS TO COMMERCIAL OR OTHER PREMISES

**Underlying average** – The underlying average level of *break-ins to commercial or other premises* has ranged between 40 and 78 offences per month during the past nine quarters. Its current level of **78 per month** is at the higher end of the range.

**Trend** – Over the past 12 months no trend was identified.

**Quarterly comparisons** – There were 218 *break-ins to commercial or other premises* recorded in the current quarter, a **decrease of 13% (32)** from the previous quarter, but an increase of 9% (18) from the same quarter the previous year.



\* Source: The Northern Territory Quarterly Crime & Justice Statistics, Issue 24: June Quarter 2008



# Recorded Crime June Quarter 2008

## Darwin – key findings\*

### Explanatory Notes

*Largely as a result of its small population, statistics in the Northern Territory can be highly volatile with large swings from one period to the next.*

*Consequently recorded crime statistics are presented over an extended period to present the current period's data within the context of any longer term trends.*

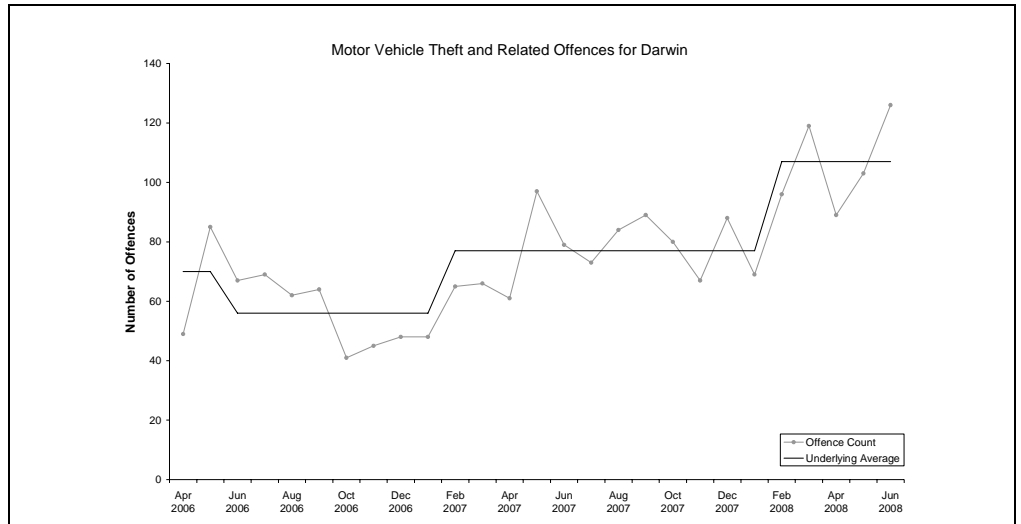
*The underlying average smooths out volatility and identifies major changes in the level of crime.*

### MOTOR VEHICLE THEFT AND RELATED OFFENCES

**Underlying average** – The underlying average level of motor vehicle theft and related offences has ranged between 56 and 107 offences per month during the past nine quarters. Its current level of **107 per month** is at the higher end of the range.

**Trend** – Over the past 12 months an upward trend was identified.

**Quarterly comparisons** – There were 318 motor vehicle theft and related offences recorded in the current quarter, an **increase of 12% (34)** from the previous quarter and an increase of 34% (81) from the same quarter the previous year.



\* Source: The Northern Territory Quarterly Crime & Justice Statistics, Issue 24: June Quarter 2008



### Explanatory Notes

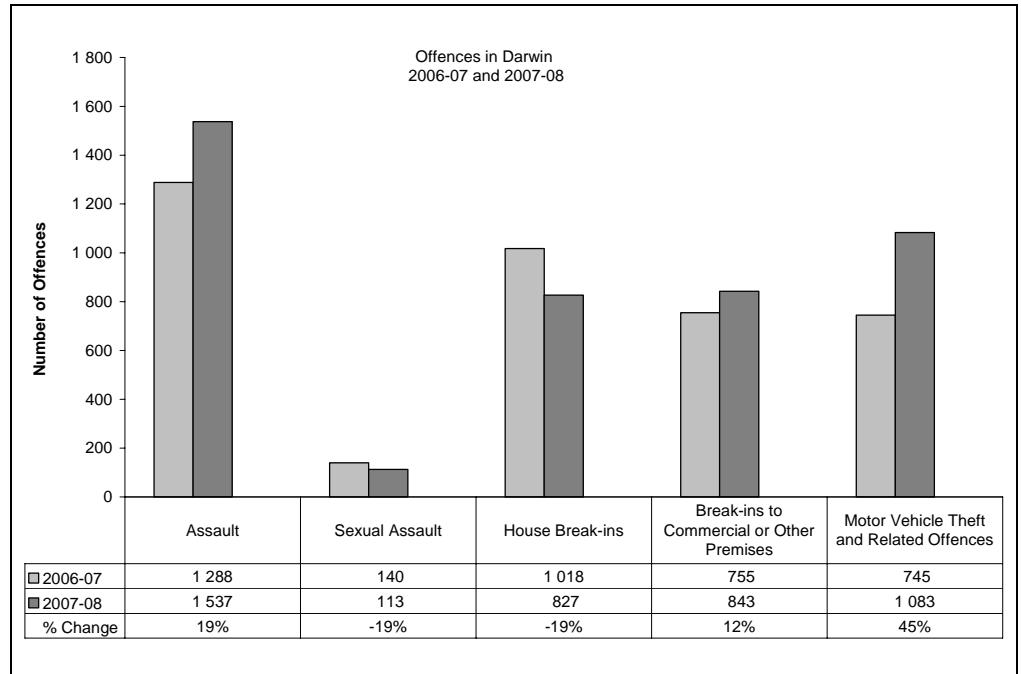
*Largely as a result of its small population, statistics in the Northern Territory can be highly volatile with large swings from one period to the next.*

*Consequently recorded crime statistics are presented over an extended period to present the current period's data within the context of any longer term trends.*

*The underlying average smooths out volatility and identifies major changes in the level of crime.*

### TWELVE-MONTH COMPARISON

Twelve-month figures provide comparable information on how crime has tracked from one 12 month period to the next.



#### Assault

During 2007-08, a total of 1 537 *assault* offences were recorded, **19% (249) more** than the previous 12 months.

#### Sexual Assault

During 2007-08, a total of 113 *sexual assault* offences were recorded, **19% (27) less** than the previous 12 months.

#### House Break-ins

During 2007-08, a total of 827 *house break-ins* were recorded, **19% (191) less** than the previous 12 months.

#### Break-ins to Commercial or Other Premises

During 2007-08, a total of 843 *break-ins to commercial or other premises* were recorded, **12% (88) more** than the previous 12 months.

#### Motor Vehicle Theft and Related Offences

During 2007-08, a total of 1 083 *motor vehicle theft and related offences* were recorded, **45% (338) more** than the previous 12 months.

\* Source: The Northern Territory Quarterly Crime & Justice Statistics, Issue 24: June Quarter 2008



### Explanatory Notes

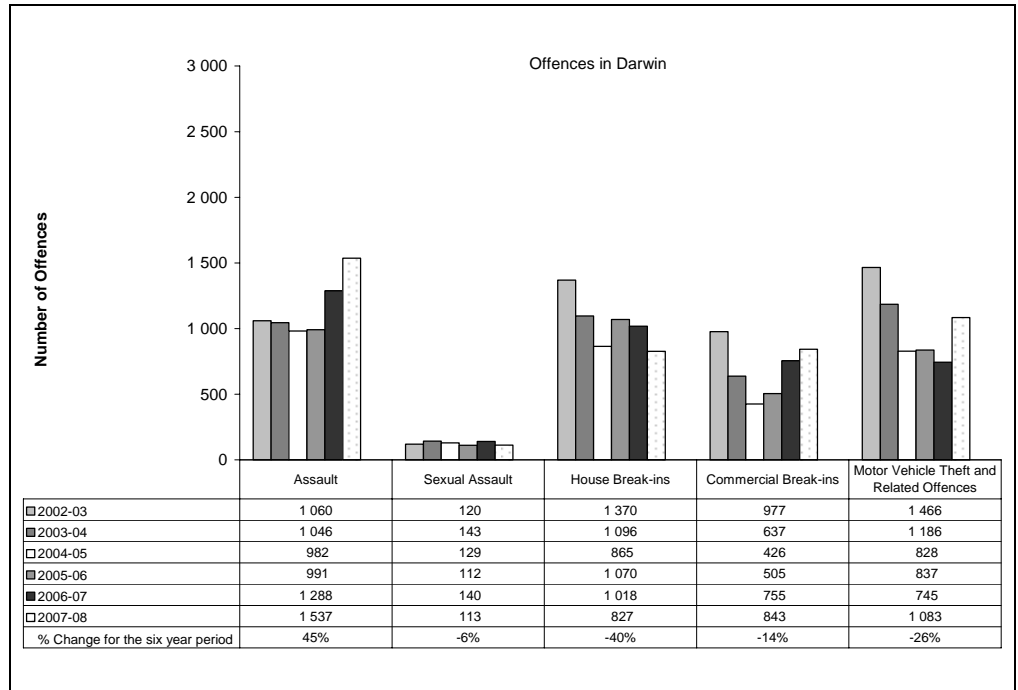
*Largely as a result of its small population, statistics in the Northern Territory can be highly volatile with large swings from one period to the next.*

*Consequently recorded crime statistics are presented over an extended period to present the current period's data within the context of any longer term trends.*

*The underlying average smooths out volatility and identifies major changes in the level of crime.*

### SIX YEAR DATA

Data presented over a six year period provides information to see how recorded crimes have tracked in the longer run.



#### Assault

In late 2004, the Northern Territory Police launched their Violent Crime Reduction Strategy, with a consequential increase in the number of recorded Assault offences in 2005 and subsequent years.

These increases in Assaults largely reflect the impact of operational changes the Police have made in the reporting and recording of domestic violence related Assaults.

During 2007-08, there were 1 537 recorded *assault* offences, **45% (477) more** than in 2002-03.

#### Sexual Assault

During 2007-08, there were 113 recorded *sexual assault* offences, **6% (7) less** than in 2002-03.

#### House Break-ins

During 2007-08, there were 827 recorded *house break-in* offences, **40% (543) less** than in 2002-03.

#### Commercial Break-ins

During 2007-08, there were 843 recorded *commercial break-in* offences, **14% (134) less** than in 2002-03.

#### Motor Vehicle Theft and Related Offences

During 2007-08, there were 1 083 recorded *motor vehicle theft and related offences*, **26% (383) less** than in 2002-03.

\* Source: The Northern Territory Recorded Crime data extract for June Quarter 2008



# Recorded Crime June Quarter 2008

## Palmerston – key findings\*

### Explanatory Notes

*Largely as a result of its small population, statistics in the Northern Territory can be highly volatile with large swings from one period to the next.*

*Consequently recorded crime statistics are presented over an extended period to present the current period's data within the context of any longer term trends.*

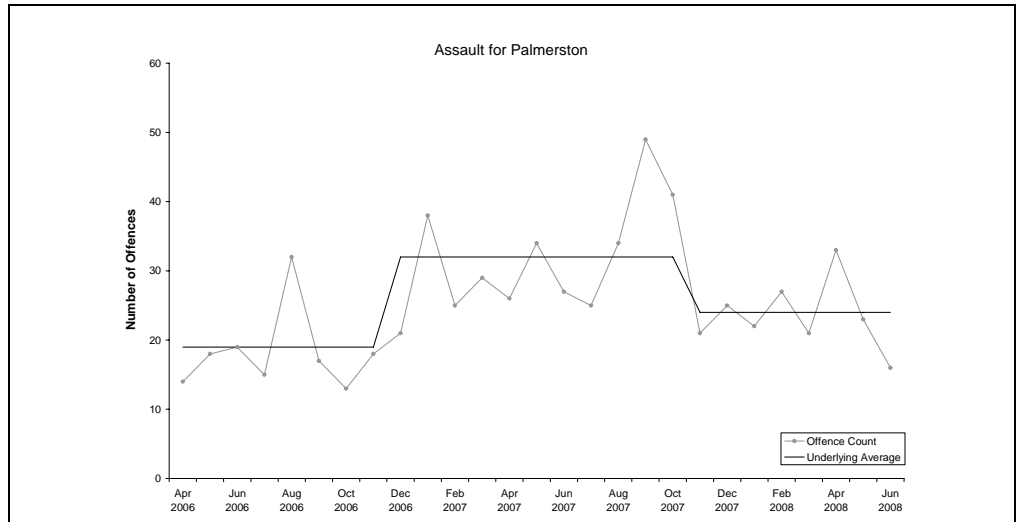
*The underlying average smooths out volatility and identifies major changes in the level of crime.*

### ASSAULT

**Underlying average** – The underlying average level of *assault* has ranged between 19 and 32 offences per month during the past nine quarters. Its current level of **24 per month** is in the middle of the range.

**Trend** – Over the past 12 months no trend was identified.

**Quarterly comparisons** – There were 72 *assault* offences recorded in the current quarter, an **increase of 3% (2)** from the previous quarter, but a decrease of 17% (15) from the same quarter the previous year.

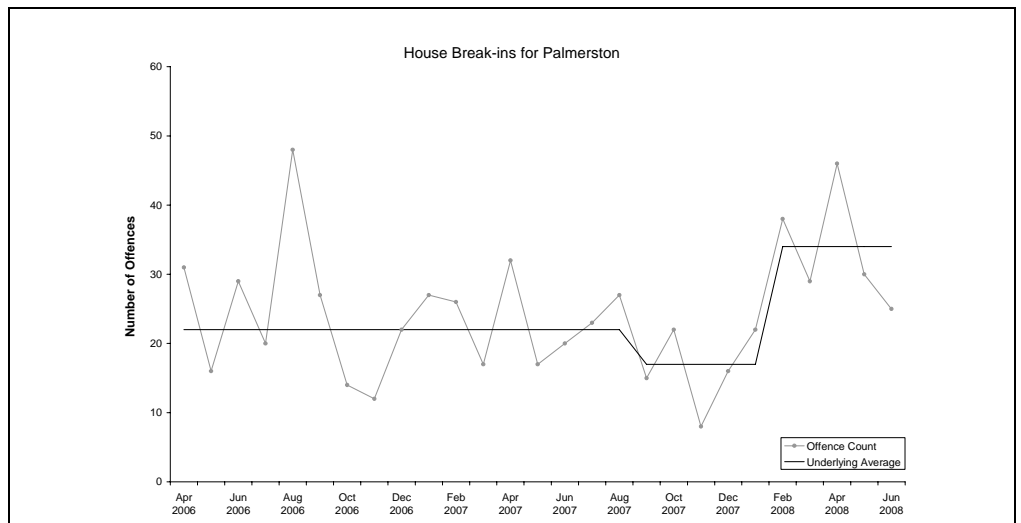


### HOUSE BREAK-INS

**Underlying average** – The underlying average level of *house break-ins* has ranged between 17 and 34 offences per month during the past nine quarters. Its current level of **34 per month** is at the higher end of the range.

**Trend** – Over the past 12 months no trend was identified.

**Quarterly comparisons** – There were 101 *house break-ins* recorded in the current quarter, an **increase of 13% (12)** from the previous quarter and an increase of 46% (32) from the same quarter the previous year.



\* Source: The Northern Territory Quarterly Crime & Justice Statistics, Issue 24: June Quarter 2008



# Recorded Crime June Quarter 2008

## Palmerston – key findings\*

### Explanatory Notes

*Largely as a result of its small population, statistics in the Northern Territory can be highly volatile with large swings from one period to the next.*

*Consequently recorded crime statistics are presented over an extended period to present the current period's data within the context of any longer term trends.*

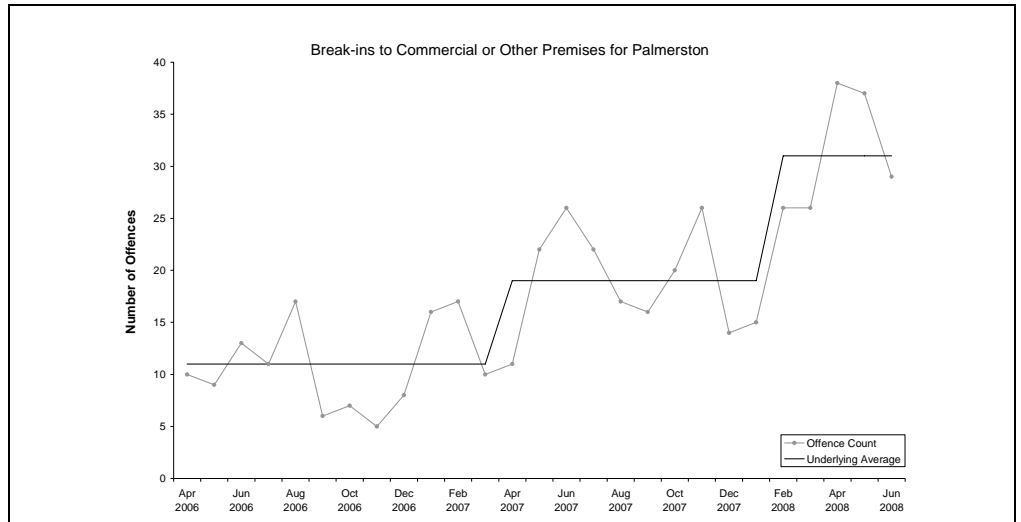
*The underlying average smooths out volatility and identifies major changes in the level of crime.*

### BREAK-INS TO COMMERCIAL OR OTHER PREMISES

**Underlying average** – The underlying average level of *break-ins to commercial or other premises* has ranged between 11 and 31 offences per month during the past nine quarters. Its current level of **31 per month** is at the higher end of the range.

**Trend** – Over the past 12 months an upward trend was identified.

**Quarterly comparisons** – There were 104 *break-ins to commercial or other premises* recorded in the current quarter, an **increase of 55% (37)** from the previous quarter and an increase of 76% (45) from the same quarter the previous year.

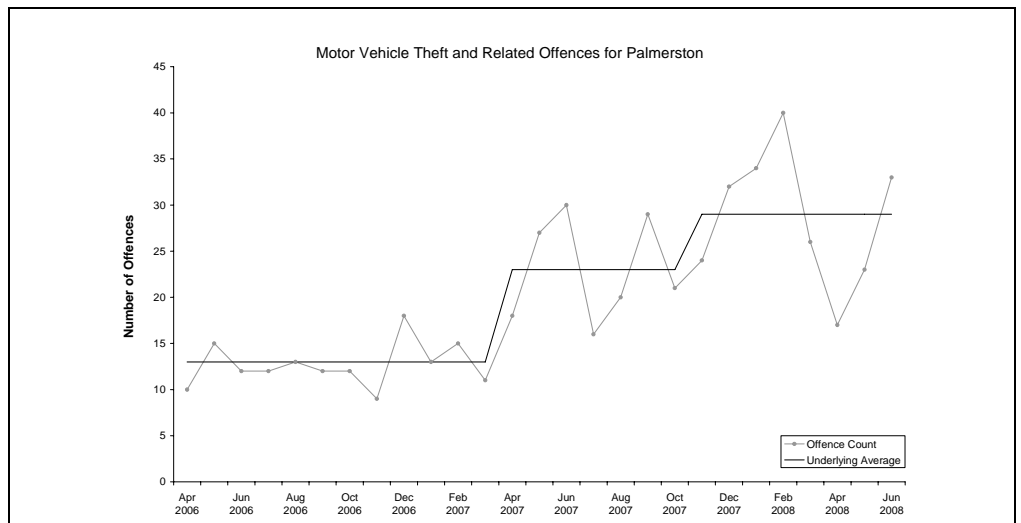


### MOTOR VEHICLE THEFT AND RELATED OFFENCES

**Underlying average** – The underlying average level of *motor vehicle theft and related offences* has ranged between 13 and 29 offences per month during the past nine quarters. Its current level of **29 per month** is at the higher end of the range.

**Trend** – Over the past 12 months no trend was identified.

**Quarterly comparisons** – There were 73 *motor vehicle theft and related offences* recorded in the current quarter, a **decrease of 27% (27)** from the previous quarter and a decrease of 3% (2) from the same quarter the previous year.



\* Source: The Northern Territory Quarterly Crime & Justice Statistics, Issue 24: June Quarter 2008



# Recorded Crime June Quarter 2008

## Palmerston – key findings\*

### Explanatory Notes

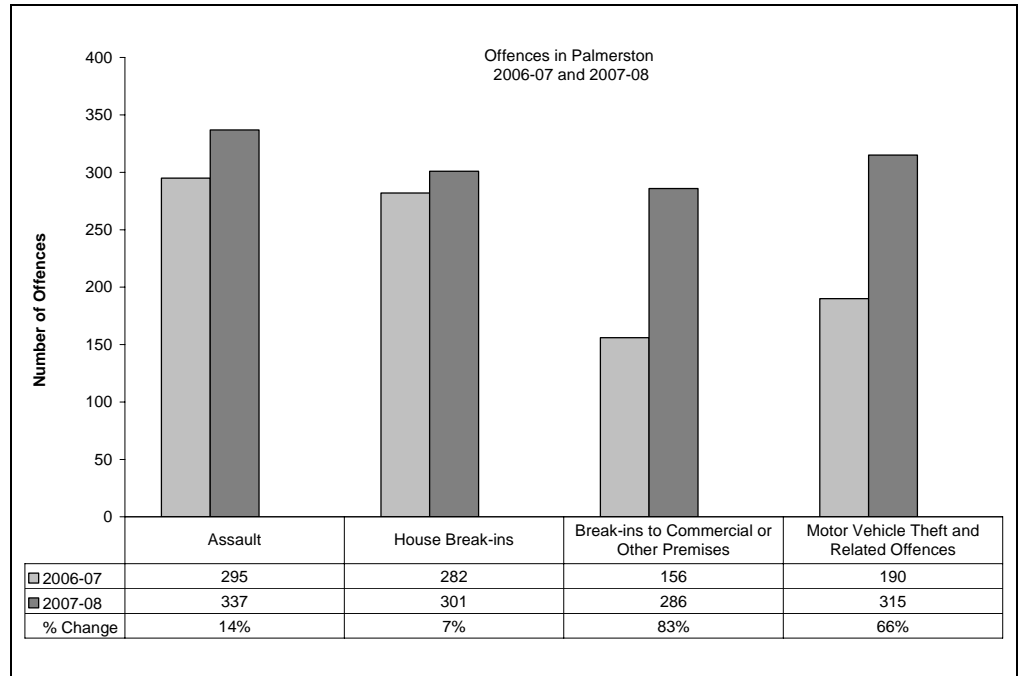
*Largely as a result of its small population, statistics in the Northern Territory can be highly volatile with large swings from one period to the next.*

*Consequently recorded crime statistics are presented over an extended period to present the current period's data within the context of any longer term trends.*

*The underlying average smooths out volatility and identifies major changes in the level of crime.*

### TWELVE-MONTH COMPARISON

Twelve-month figures provide comparable information on how crime has tracked from one 12 month period to the next.



#### Assault

During 2007-08 a total of 337 *assault* offences were recorded, **14% (42) more** than the previous 12 months.

#### House Break-ins

During 2007-08 a total of 301 *house break-ins* were recorded, **7% (19) more** than the previous 12 months.

#### Break-ins to Commercial or Other Premises

During 2007-08 a total of 286 *break-ins to commercial or other premises* were recorded, **83% (130) more** than the previous 12 months.

#### Motor Vehicle Theft and Related Offences

During 2007-08 a total of 315 *motor vehicle theft and related offences* were recorded, **66% (125) more** than the previous 12 months.

\* Source: The Northern Territory Quarterly Crime & Justice Statistics, Issue 24: June Quarter 2008



# Recorded Crime June Quarter 2008

## Palmerston – key findings\*

### Explanatory Notes

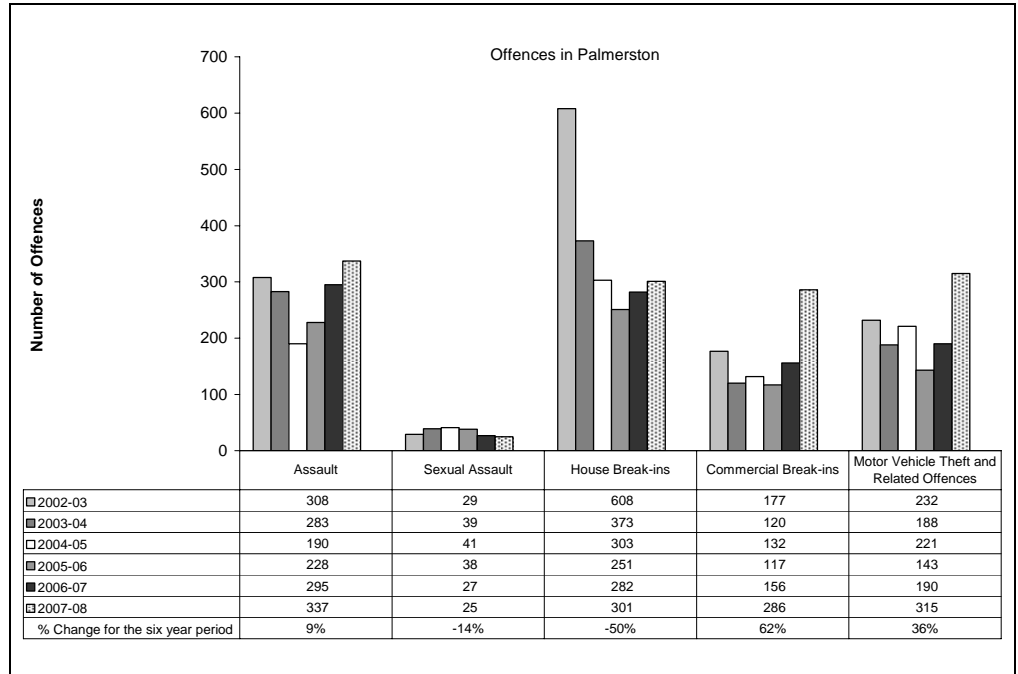
Largely as a result of its small population, statistics in the Northern Territory can be highly volatile with large swings from one period to the next.

Consequently recorded crime statistics are presented over an extended period to present the current period's data within the context of any longer term trends.

The underlying average smooths out volatility and identifies major changes in the level of crime.

### SIX YEAR DATA

Data presented over a six year period provides information to see how recorded crimes have tracked in the longer run.



#### Assault

In late 2004, the Northern Territory Police launched their Violent Crime Reduction Strategy, with a consequential increase in the number of recorded Assault offences in 2005 and subsequent years.

These increases in Assaults largely reflect the impact of operational changes the Police have made in the reporting and recording of domestic violence related Assaults.

During 2007-08 there were 337 recorded *assault* offences, **9% (29) more** than in 2002-03.

#### Sexual Assault

During 2007-08 there were 25 recorded *sexual assault* offences, **14% (4) less** than in 2002-03.

#### House Break-ins

During 2007-08 there were 301 recorded *house break-in* offences, **50% (307) less** than in 2002-03.

#### Commercial Break-ins

During 2007-08 there were 286 recorded *commercial break-in* offences, **62% (109) more** than in 2002-03.

#### Motor Vehicle Theft and Related Offences

During 2007-08 there were 315 recorded *motor vehicle theft and related offences*, **36% (83) more** than in 2002-03.

\* Source: The Northern Territory Recorded Crime data extract for June Quarter 2008



# Recorded Crime June Quarter 2008

## Alice Springs – key findings\*

### Explanatory Notes

*Largely as a result of its small population, statistics in the Northern Territory can be highly volatile with large swings from one period to the next.*

*Consequently recorded crime statistics are presented over an extended period to present the current period's data within the context of any longer term trends.*

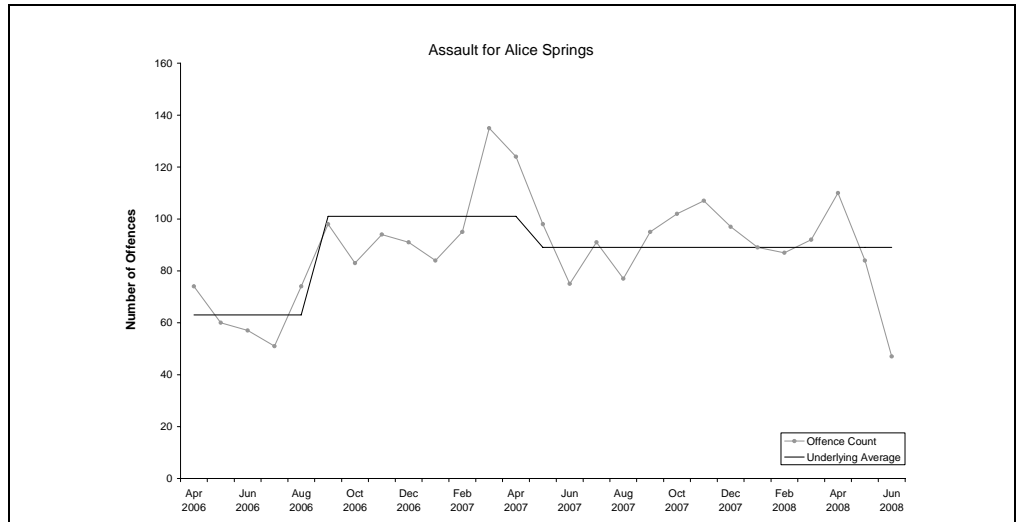
*The underlying average smooths out volatility and identifies major changes in the level of crime.*

### ASSAULT

**Underlying average** – The underlying average level of *assault* has ranged between 63 and 101 offences per month during the past nine quarters. Its current level of **89 per month** is in the middle of the range.

**Trend** – Over the past 12 months no trend was identified.

**Quarterly comparisons** – There were 241 *assault* offences recorded in the current quarter, a **decrease of 10% (27)** from the previous quarter and a decrease of 19% (56) from the same quarter the previous year.

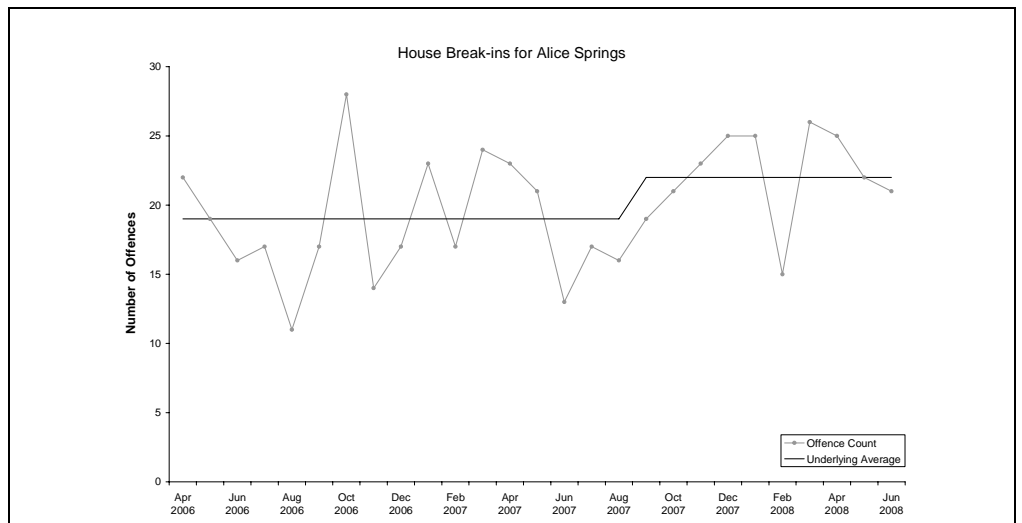


### HOUSE BREAK-INS

**Underlying average** – The underlying average level of *house break-ins* has ranged between 19 and 22 offences per month during the past nine quarters. Its current level of **22 per month** is at the higher end of the range.

**Trend** – Over the past 12 months no trend was identified.

**Quarterly comparisons** – There were 68 *house break-ins* recorded in the current quarter, an **increase of 3% (2)** from the previous quarter and an increase of 19% (11) from the same quarter the previous year.



\* Source: The Northern Territory Quarterly Crime & Justice Statistics, Issue 24: June Quarter 2008



# Recorded Crime June Quarter 2008

## Alice Springs – key findings\*

### Explanatory Notes

*Largely as a result of its small population, statistics in the Northern Territory can be highly volatile with large swings from one period to the next.*

*Consequently recorded crime statistics are presented over an extended period to present the current period's data within the context of any longer term trends.*

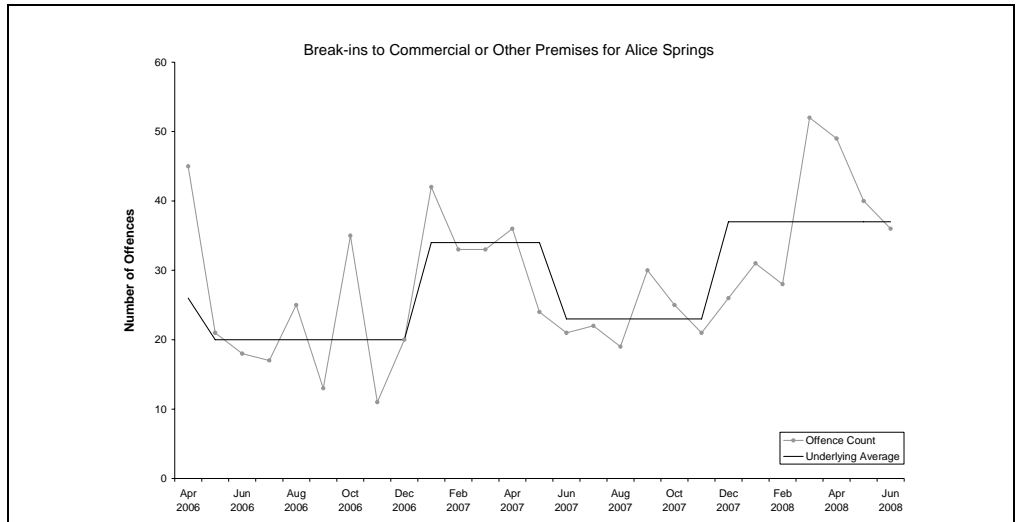
*The underlying average smooths out volatility and identifies major changes in the level of crime.*

### BREAK-INS TO COMMERCIAL OR OTHER PREMISES

**Underlying average** – The underlying average level of *break-ins to commercial or other premises* has ranged between 20 and 37 offences per month during the past nine quarters. Its current level of **37 per month** is at the higher end of the range.

**Trend** – Over the past 12 months an upward trend was identified.

**Quarterly comparisons** – There were 125 *break-ins to commercial or other premises* recorded in the current quarter, an **increase of 13% (14)** from the previous quarter and an increase of 54% (44) from the same quarter the previous year.

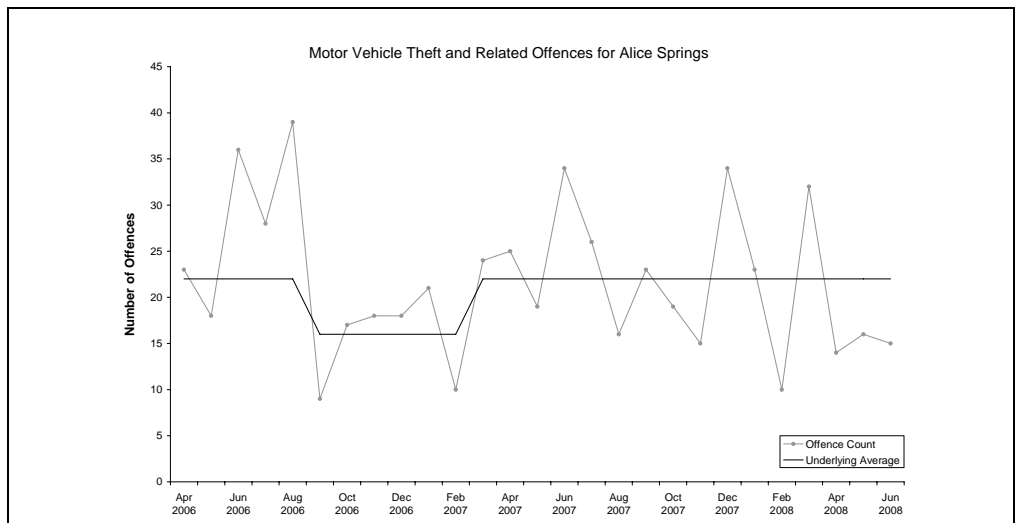


### MOTOR VEHICLE THEFT AND RELATED OFFENCES

**Underlying average** – The underlying average level of *motor vehicle theft and related offences* has ranged between 16 and 22 offences per month during the past nine quarters. Its current level of **22 per month** is at the higher end of the range.

**Trend** – Over the past 12 months no trend was identified.

**Quarterly comparisons** – There were 45 *motor vehicle theft and related offences* recorded in the current quarter, a **decrease of 31% (20)** from the previous quarter and a decrease of 42% (33) from the same quarter the previous year.



\* Source: The Northern Territory Quarterly Crime & Justice Statistics, Issue 24: June Quarter 2008



# Recorded Crime June Quarter 2008

## Alice Springs – key findings\*

### Explanatory Notes

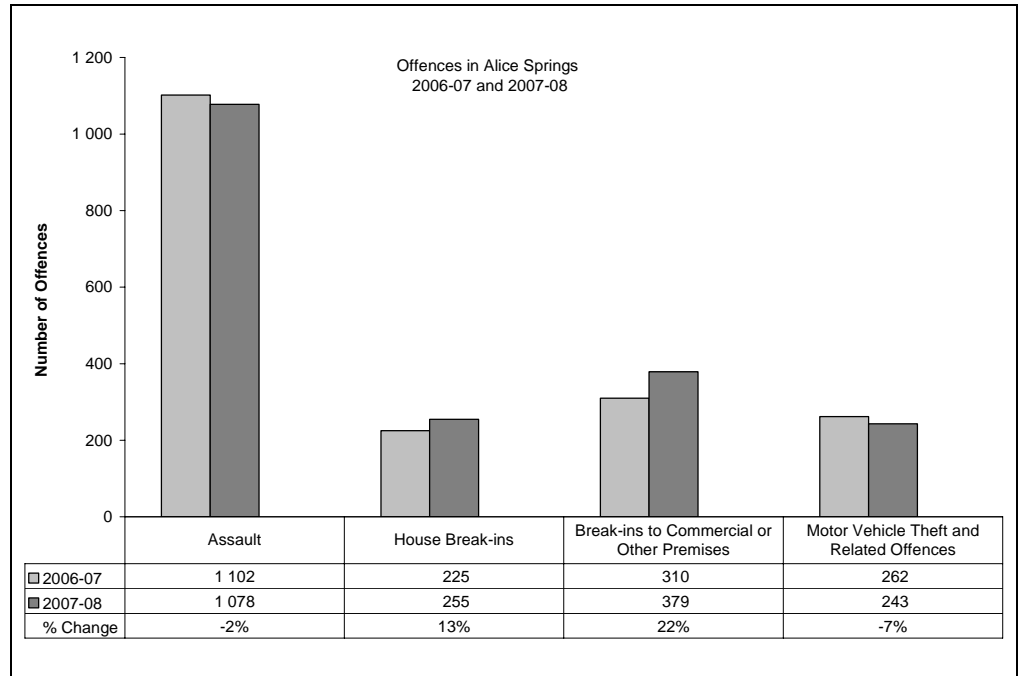
*Largely as a result of its small population, statistics in the Northern Territory can be highly volatile with large swings from one period to the next.*

*Consequently recorded crime statistics are presented over an extended period to present the current period's data within the context of any longer term trends.*

*The underlying average smooths out volatility and identifies major changes in the level of crime.*

### TWELVE-MONTH COMPARISON

Twelve-month figures provide comparable information on how crime has tracked from one 12 month period to the next.



#### Assault

During 2007-08 a total of 1 078 *assault* offences were recorded, **2% (24) less** than the previous 12 months.

#### House Break-ins

During 2007-08 a total of 255 *house break-ins* were recorded, **13% (30) more** than the previous 12 months.

#### Break-ins to Commercial or Other Premises

During 2007-08 a total of 379 *break-ins to commercial or other premises* were recorded, **22% (69) more** than the previous 12 months.

#### Motor Vehicle Theft and Related Offences

During 2007-08 a total of 243 *motor vehicle theft and related offences* were recorded, **7% (19) less** than the previous 12 months.

\* Source: The Northern Territory Quarterly Crime & Justice Statistics, Issue 24: June Quarter 2008



# Recorded Crime June Quarter 2008

## Alice Springs – key findings\*

### Explanatory Notes

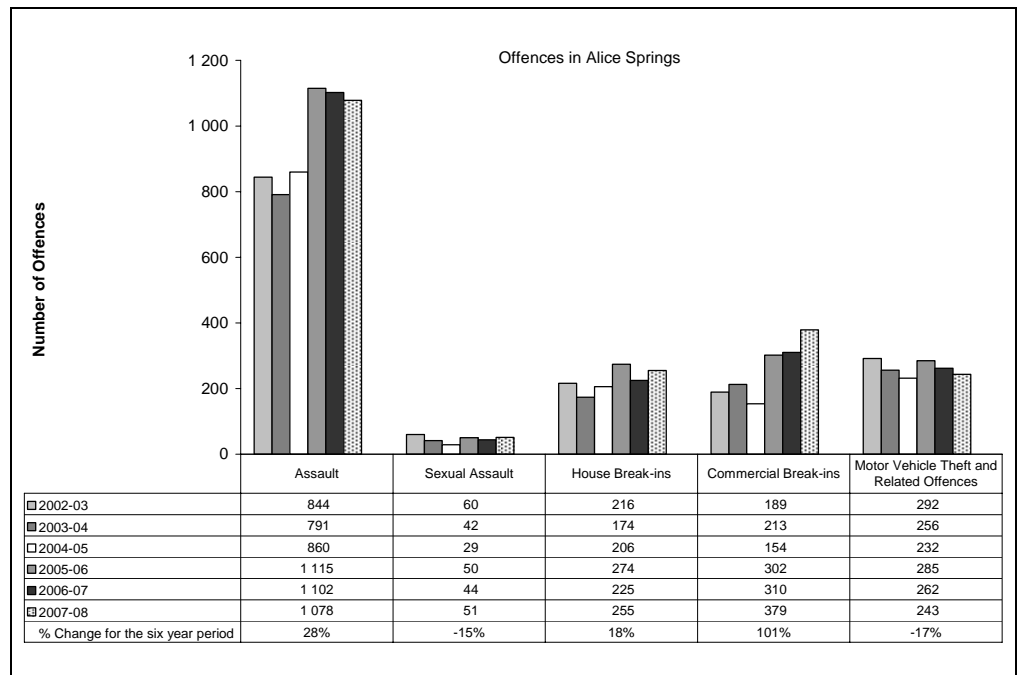
*Largely as a result of its small population, statistics in the Northern Territory can be highly volatile with large swings from one period to the next.*

*Consequently recorded crime statistics are presented over an extended period to present the current period's data within the context of any longer term trends.*

*The underlying average smooths out volatility and identifies major changes in the level of crime.*

### SIX YEAR DATA

Data presented over a six year period provides information to see how recorded crimes have tracked in the longer run.



### Assault

In late 2004, the Northern Territory Police launched their Violent Crime Reduction Strategy, with a consequential increase in the number of recorded Assault offences in 2005 and subsequent years.

These increases in Assaults largely reflect the impact of operational changes the Police have made in the reporting and recording of domestic violence related Assaults.

During 2007-08 there were 1 078 recorded *assault* offences, **28% (234) more** than in 2002-03.

### Sexual Assault

During 2007-08 there were 51 recorded *sexual assault* offences, **15% (9) less** than in 2002-03.

### House Break-ins

During 2007-08 there were 255 recorded *house break-in* offences, **18% (39) more** than in 2002-03.

### Commercial Break-ins

During 2007-08 there were 379 recorded *commercial break-in* offences, **101% (190) more** than in 2002-03.

### Motor Vehicle Theft and Related Offences

During 2007-08 there were 243 recorded *motor vehicle theft and related offences*, **17% (49) less** than in 2002-03.

\* Source: The Northern Territory Recorded Crime data extract for June Quarter 2008



## Katherine – key findings\*

### Explanatory Notes

*Largely as a result of its small population, statistics in the Northern Territory can be highly volatile with large swings from one period to the next.*

*Consequently recorded crime statistics are presented over an extended period to present the current period's data within the context of any longer term trends.*

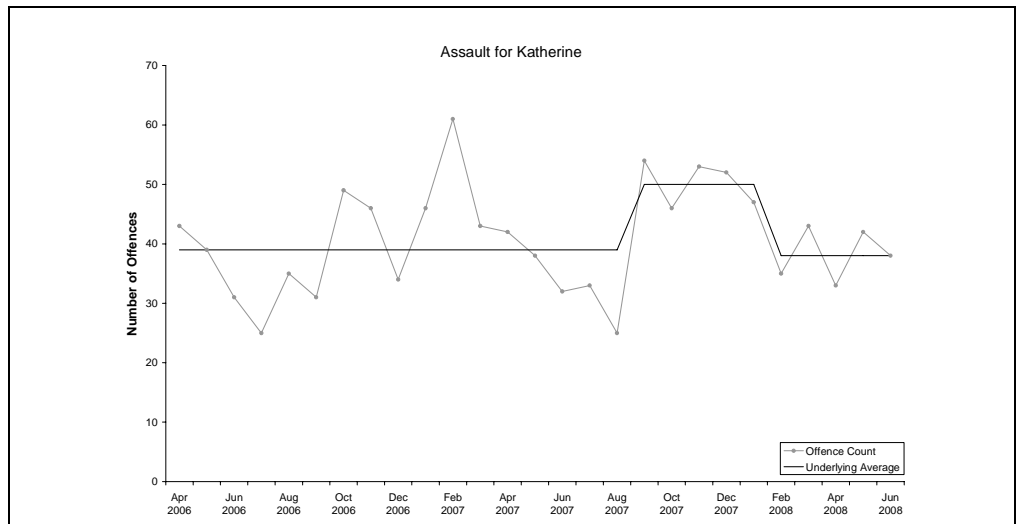
*The underlying average smooths out volatility and identifies major changes in the level of crime.*

### ASSAULT

**Underlying average** – The underlying average level of *assault* has ranged between 38 and 50 offences per month during the past nine quarters. Its current level of **38 per month** is at the lower end of the range.

**Trend** – Over the past 12 months no trend was identified.

**Quarterly comparisons** – There were 113 *assault* offences recorded in the current quarter, a **decrease of 10% (12)** from the previous quarter, but an increase of 1% (1) from the same quarter the previous year.

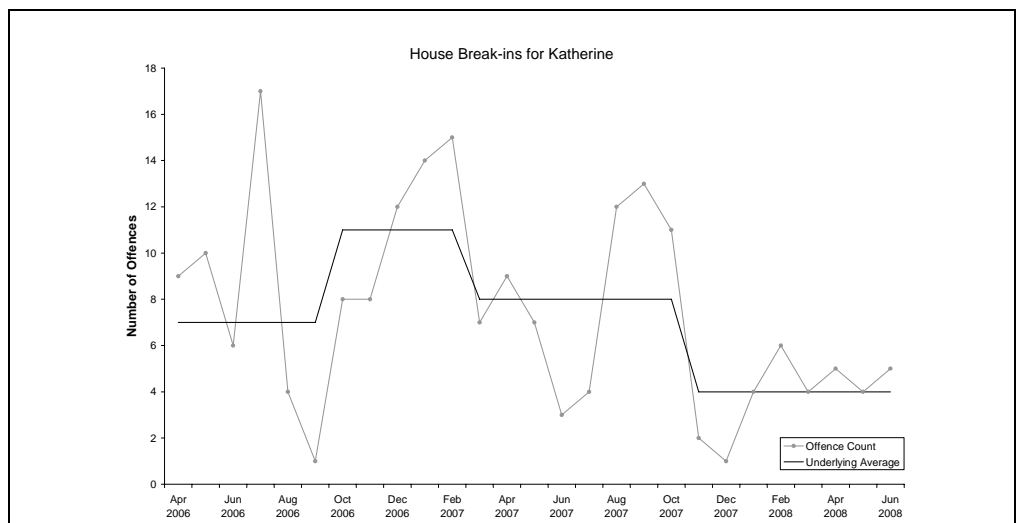


### HOUSE BREAK-INS

**Underlying average** – The underlying average level of *house break-ins* has ranged between 4 and 11 offences per month during the past nine quarters. Its current level of **4 per month** is at the lower end of the range.

**Trend** – Over the past 12 months no trend was identified.

**Quarterly comparisons** – There were 14 *house break-ins* recorded in the current quarter, **no change** from the previous quarter, but a decrease of 26% (5) from the same quarter the previous year.



\* Source: The Northern Territory Quarterly Crime & Justice Statistics, Issue 24: June Quarter 2008



## Katherine – key findings\*

### Explanatory Notes

*Largely as a result of its small population, statistics in the Northern Territory can be highly volatile with large swings from one period to the next.*

*Consequently recorded crime statistics are presented over an extended period to present the current period's data within the context of any longer term trends.*

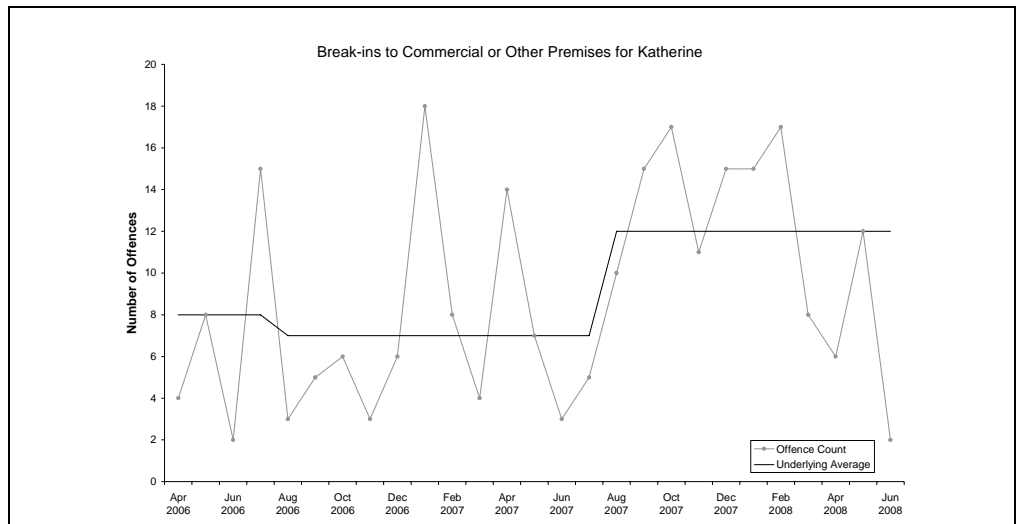
*The underlying average smooths out volatility and identifies major changes in the level of crime.*

### BREAK-INS TO COMMERCIAL OR OTHER PREMISES

**Underlying average** – The underlying average level of *break-ins to commercial or other premises* has ranged between 7 and 12 offences per month during the past nine quarters. Its current level of **12 per month** is at the higher end of the range.

**Trend** – Over the past 12 months no trend was identified.

**Quarterly comparisons** – There were 20 *break-ins to commercial or other premises* offences recorded in the current quarter, a **decrease of 50% (20)** from the previous quarter and a decrease of 17% (4) from the same quarter the previous year.

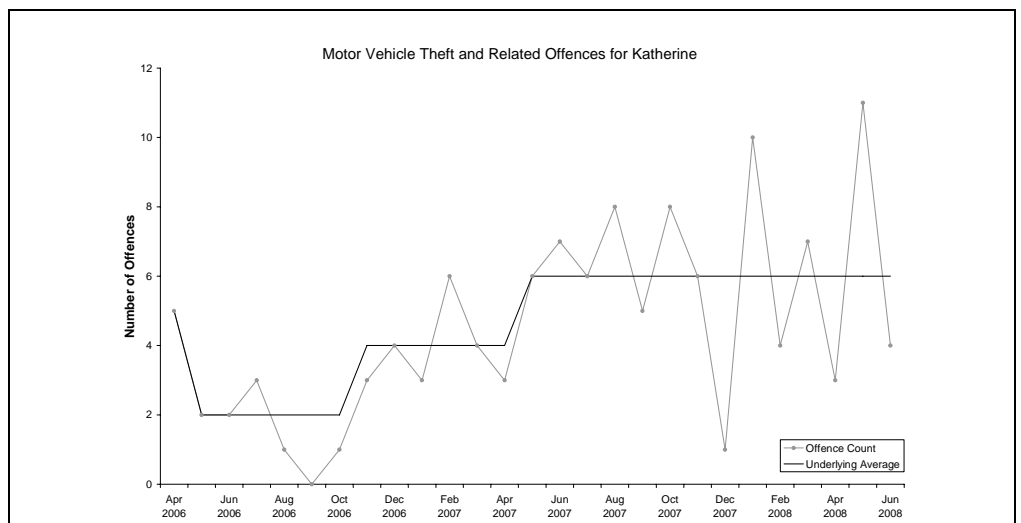


### MOTOR VEHICLE THEFT AND RELATED OFFENCES

**Underlying average** – The underlying average level of *motor vehicle theft and related offences* has ranged between 2 and 6 offences per month during the past nine quarters. Its current level of **6 per month** is at the higher end of the range.

**Trend** – Over the past 12 months no trend was identified.

**Quarterly comparisons** – There were 18 *motor vehicle theft and related offences* recorded in the current quarter, a **decrease of 14% (3)** from the previous quarter, but an increase of 13% (2) from the same quarter the previous year.



\* Source: The Northern Territory Quarterly Crime & Justice Statistics, Issue 24: June Quarter 2008



## Katherine – key findings\*

### Explanatory Notes

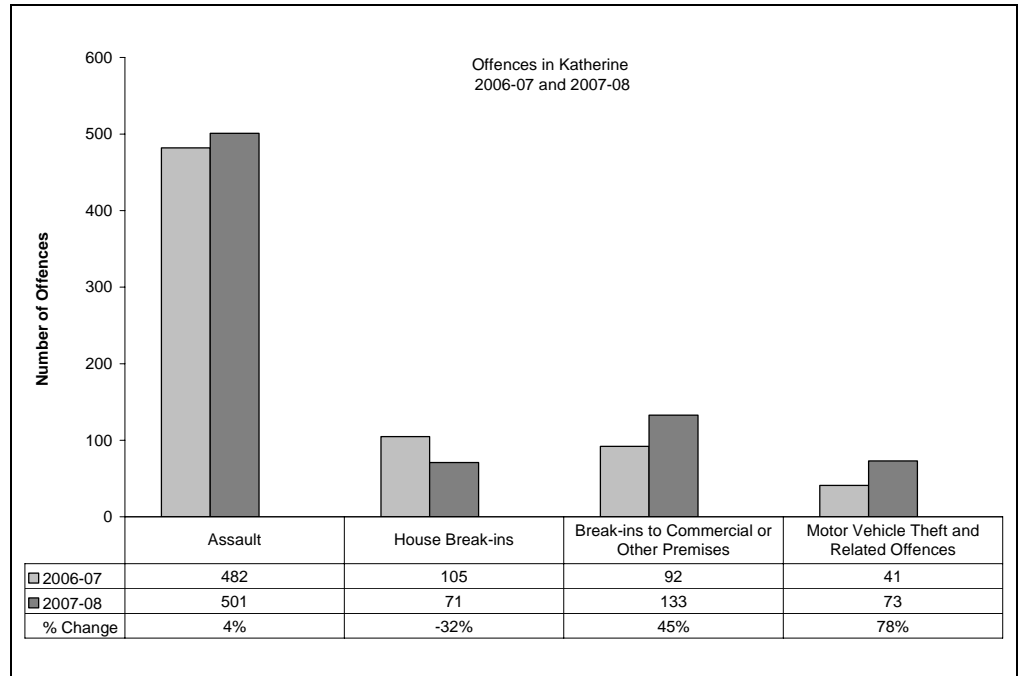
*Largely as a result of its small population, statistics in the Northern Territory can be highly volatile with large swings from one period to the next.*

*Consequently recorded crime statistics are presented over an extended period to present the current period's data within the context of any longer term trends.*

*The underlying average smooths out volatility and identifies major changes in the level of crime.*

### TWELVE-MONTH COMPARISON

Twelve-month figures provide comparable information on how crime has tracked from one 12 month period to the next.



#### Assault

During 2007-08 a total of 501 *assault* offences were recorded, **4% (19) more** than the previous 12 months.

#### House Break-ins

During 2007-08 a total of 71 *house break-ins* were recorded, **32% (34) less** than the previous 12 months.

#### Break-ins to Commercial or Other Premises

During 2007-08 a total of 133 *break-ins to commercial or other premises* were recorded, **45% (41) more** than the previous 12 months.

#### Motor Vehicle Theft and Related Offences

During 2007-08 a total of 73 *motor vehicle theft and related offences* were recorded, **78% (32) more** than the previous 12 months.

\* Source: The Northern Territory Quarterly Crime & Justice Statistics, Issue 24: June Quarter 2008



## Katherine – key findings\*

### Explanatory Notes

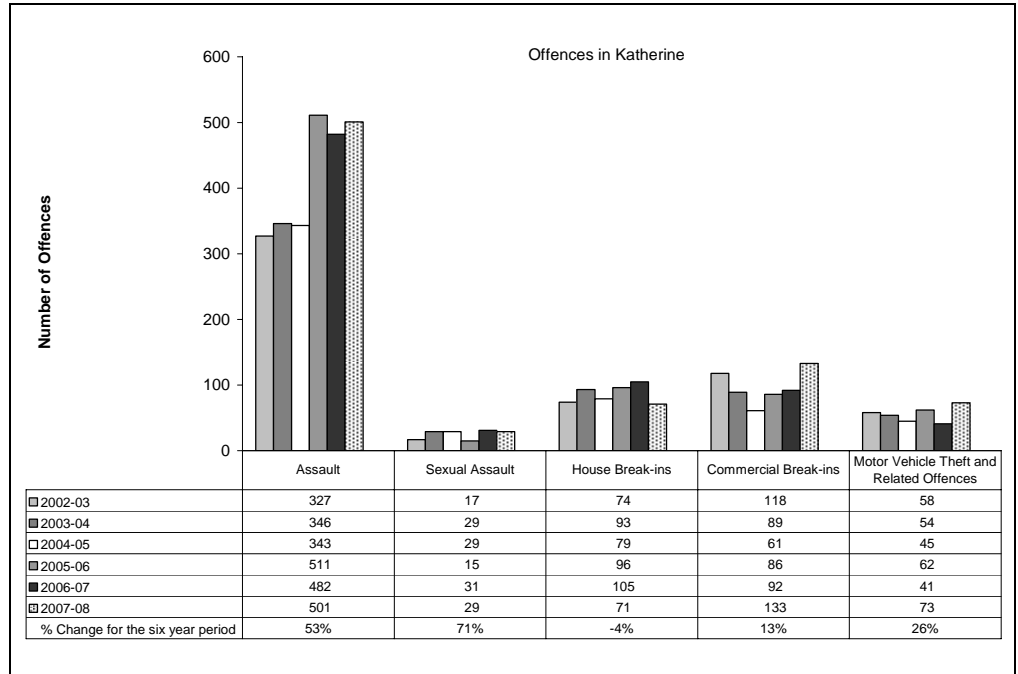
*Largely as a result of its small population, statistics in the Northern Territory can be highly volatile with large swings from one period to the next.*

*Consequently recorded crime statistics are presented over an extended period to present the current period's data within the context of any longer term trends.*

*The underlying average smooths out volatility and identifies major changes in the level of crime.*

### SIX YEAR DATA

Data presented over a six year period provides information to see how recorded crimes have tracked in the longer run.



### Assault

In late 2004, the Northern Territory Police launched their Violent Crime Reduction Strategy, with a consequential increase in the number of recorded Assault offences in 2005 and subsequent years.

These increases in Assaults largely reflect the impact of operational changes the Police have made in the reporting and recording of domestic violence related Assaults.

During 2007-08 there were 501 recorded *assault* offences, **53% (174) more** than in 2002-03.

### Sexual Assault

During 2007-08 there were 29 recorded *sexual assault* offences, **71% (12) more** than in 2002-03.

### House Break-ins

During 2007-08 there were 71 recorded *house break-in* offences, **4% (3) less** than in 2002-03.

### Commercial Break-ins

During 2007-08 there were 133 recorded *commercial break-in* offences, **13% (15) more** than in 2002-03.

### Motor Vehicle Theft and Related Offences

During 2007-08 there were 73 recorded *motor vehicle theft and related offences*, **26% (15) more** than in 2002-03.

\* Source: The Northern Territory Recorded Crime data extract for June Quarter 2008



# Recorded Crime June Quarter 2008

## Tennant Creek – key findings\*

### Explanatory Notes

*Largely as a result of its small population, statistics in the Northern Territory can be highly volatile with large swings from one period to the next.*

*Consequently recorded crime statistics are presented over an extended period to present the current period's data within the context of any longer term trends.*

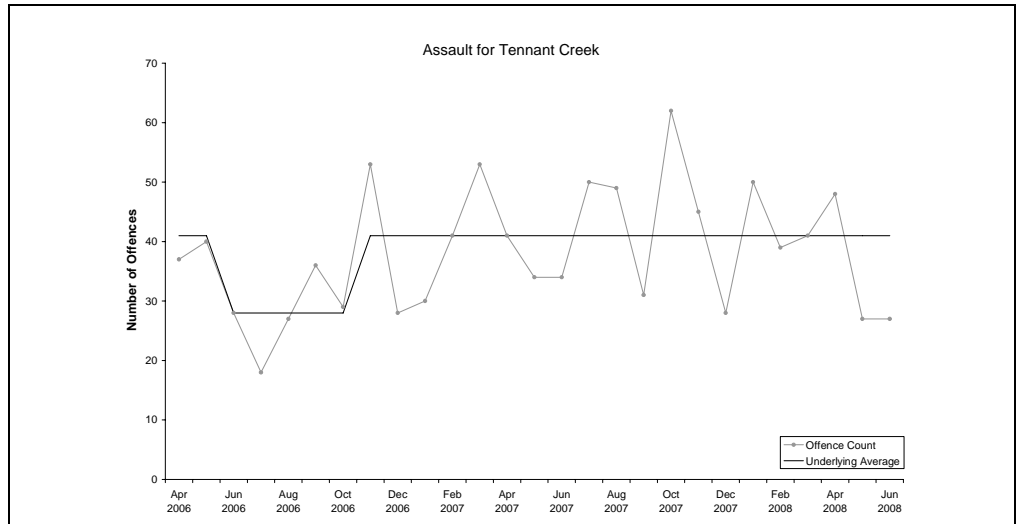
*The underlying average smooths out volatility and identifies major changes in the level of crime.*

### ASSAULT

**Underlying average** – The underlying average level of *assault* has ranged between 28 and 41 offences per month during the past nine quarters. Its current level of **41 per month** is at the higher end of the range.

**Trend** – Over the past 12 months no trend was identified.

**Quarterly comparisons** – There were 102 *assault* offences recorded in the current quarter, a **decrease of 22% (28)** from the previous quarter and a decrease of 6% (7) from the same quarter the previous year.

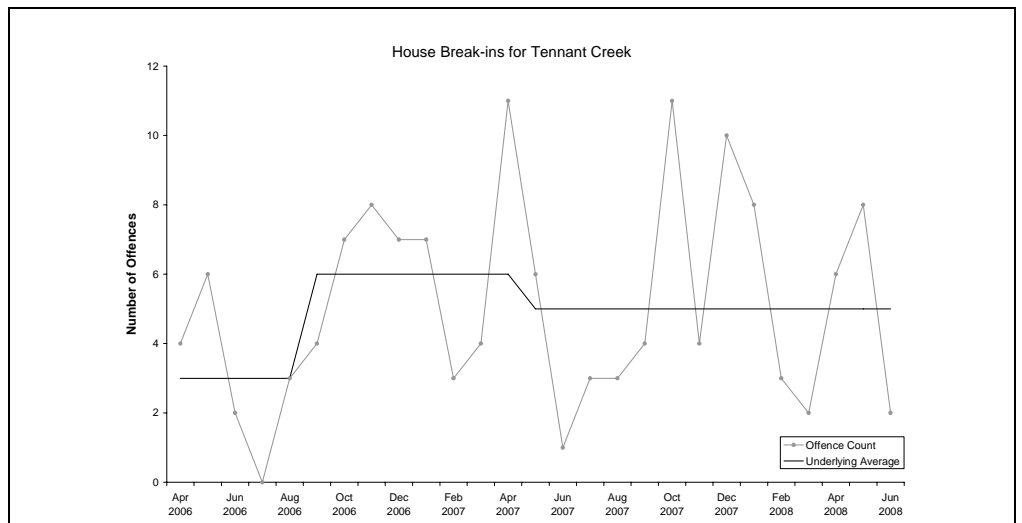


### HOUSE BREAK-INS

**Underlying average** – The underlying average level of *house break-ins* has ranged between 3 and 6 offences per month during the past nine quarters. Its current level of **5 per month** is in the middle of the range.

**Trend** – Over the past 12 months no trend was identified.

**Quarterly comparisons** – There were 16 *house break-ins* recorded in the current quarter, an **increase of 23% (3)** from the previous quarter, but a decrease of 11% (2) from the same quarter the previous year.



\* Source: The Northern Territory Quarterly Crime & Justice Statistics, Issue 24: June Quarter 2008



# Recorded Crime June Quarter 2008

## Tennant Creek – key findings\*

### Explanatory Notes

*Largely as a result of its small population, statistics in the Northern Territory can be highly volatile with large swings from one period to the next.*

*Consequently recorded crime statistics are presented over an extended period to present the current period's data within the context of any longer term trends.*

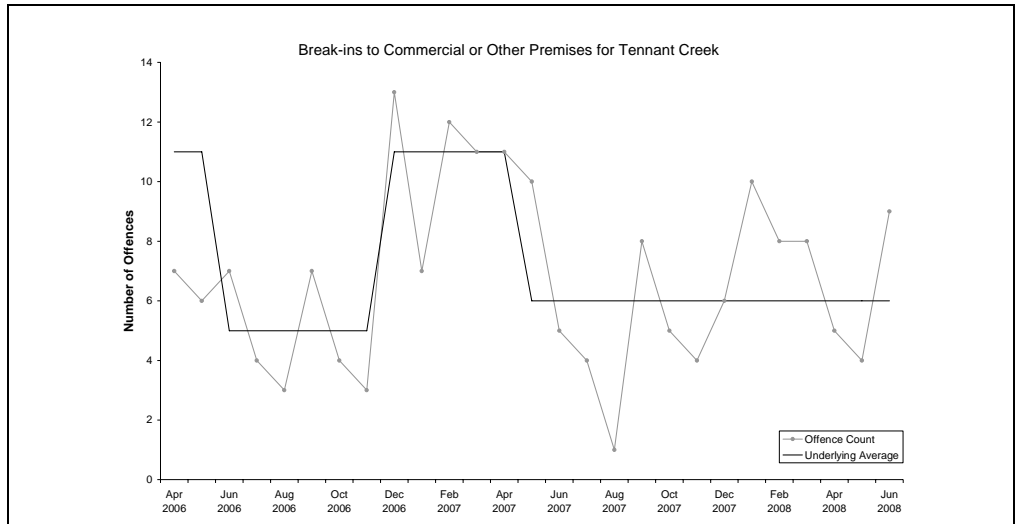
*The underlying average smooths out volatility and identifies major changes in the level of crime.*

### BREAK-INS TO COMMERCIAL OR OTHER PREMISES

**Underlying average** – The underlying average level of *break-ins to commercial or other premises* has ranged between 5 and 11 offences per month during the past nine quarters. Its current level of **6 per month** is at the lower end of the range.

**Trend** – Over the past 12 months no trend was identified.

**Quarterly comparisons** – There were 18 *break-ins to commercial or other premises* recorded in the current quarter, a **decrease of 31% (8)** from the previous quarter and a decrease of 31% (8) from the same quarter the previous year.



\* Source: The Northern Territory Quarterly Crime & Justice Statistics, Issue 24: June Quarter 2008



# Recorded Crime June Quarter 2008

## Tennant Creek – key findings\*

### Explanatory Notes

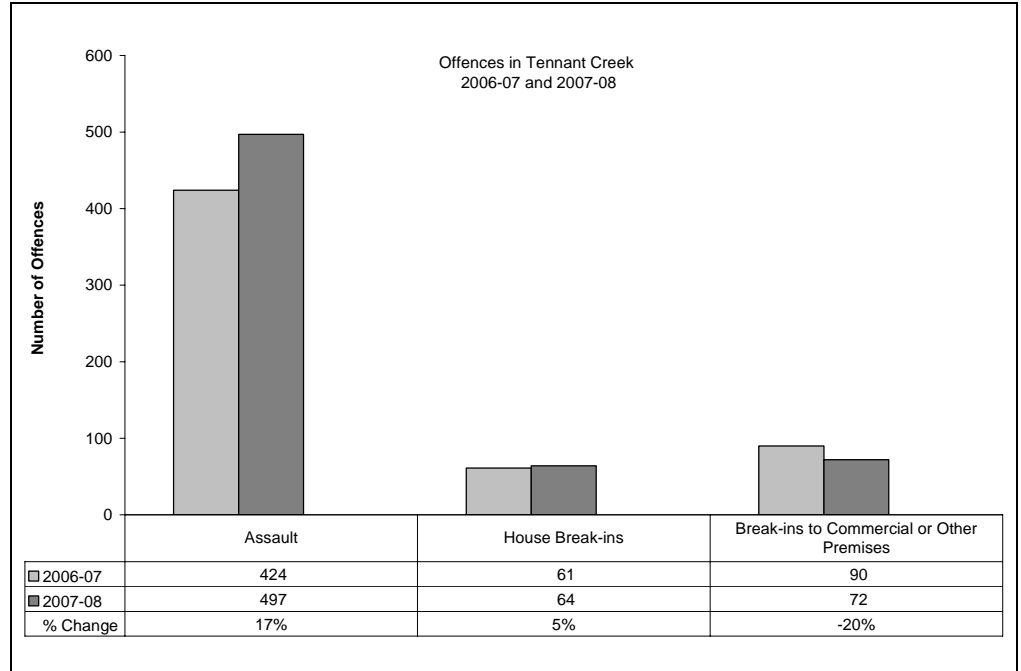
*Largely as a result of its small population, statistics in the Northern Territory can be highly volatile with large swings from one period to the next.*

*Consequently recorded crime statistics are presented over an extended period to present the current period's data within the context of any longer term trends.*

*The underlying average smooths out volatility and identifies major changes in the level of crime.*

### TWELVE-MONTH COMPARISON

Twelve-month figures provide comparable information on how crime has tracked from one 12 month period to the next.



#### Assault

During 2007-08 a total of 497 *assault* offences were recorded, **17% (73) more** than the previous 12 months.

#### House Break-ins

During 2007-08 a total of 64 *house break-ins* were recorded, **5% (3) more** than the previous 12 months.

#### Break-ins to Commercial or Other Premises

During 2007-08 a total of 72 *break-ins to commercial or other premises* were recorded, **20% (18) less** than the previous 12 months.

\* Source: The Northern Territory Quarterly Crime & Justice Statistics, Issue 24: June Quarter 2008



# Recorded Crime June Quarter 2008

## Tennant Creek – key findings\*

### Explanatory Notes

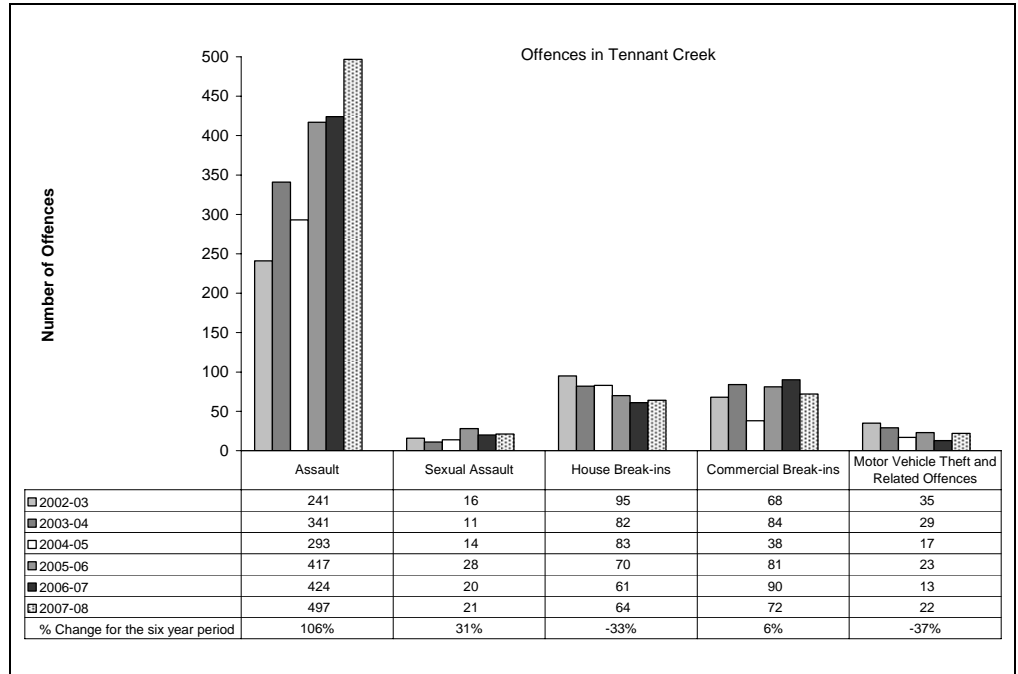
Largely as a result of its small population, statistics in the Northern Territory can be highly volatile with large swings from one period to the next.

Consequently recorded crime statistics are presented over an extended period to present the current period's data within the context of any longer term trends.

The underlying average smooths out volatility and identifies major changes in the level of crime.

### SIX YEAR DATA

Data presented over a six year period provides information to see how recorded crimes have tracked in the longer run.



#### Assault

In late 2004, the Northern Territory Police launched their Violent Crime Reduction Strategy, with a consequential increase in the number of recorded Assault offences in 2005 and subsequent years.

These increases in Assaults largely reflect the impact of operational changes the Police have made in the reporting and recording of domestic violence related Assaults.

During 2007-08 there were 497 recorded *assault* offences, **106% (256) more** than in 2002-03.

#### Sexual Assault

During 2007-08 there were 21 recorded *sexual assault* offences, **31% (5) more** than in 2002-03.

#### House Break-ins

During 2007-08 there were 64 recorded *house break-in* offences, **33% (31) less** than in 2002-03.

#### Commercial Break-ins

During 2007-08 there were 72 recorded *commercial break-in* offences, **6% (4) more** than in 2002-03.

#### Motor Vehicle Theft and Related Offences

During 2007-08 there were 22 recorded *motor vehicle theft and related offences*, **37% (13) less** than in 2002-03.

\* Source: The Northern Territory Recorded Crime data extract for June Quarter 2008



## Nhulunbuy – key findings\*

### Explanatory Notes

*Largely as a result of its small population, statistics in the Northern Territory can be highly volatile with large swings from one period to the next.*

*Consequently recorded crime statistics are presented over an extended period to present the current period's data within the context of any longer term trends.*

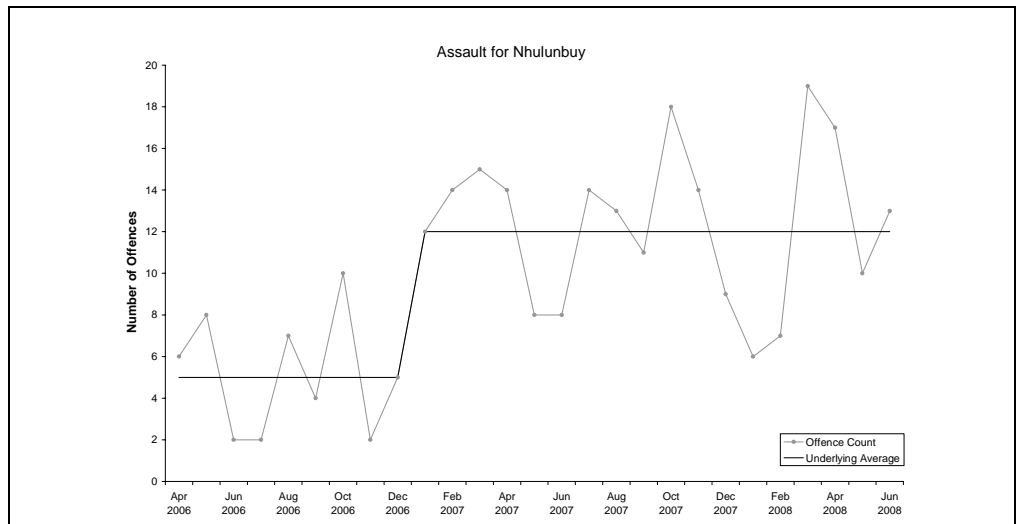
*The underlying average smooths out volatility and identifies major changes in the level of crime.*

### ASSAULT

**Underlying average** – The underlying average level of *assault* has ranged between 5 and 12 offences per month during the past nine quarters. Its current level of **12 per month** is at the higher end of the range.

**Trend** – Over the past 12 months no trend was identified.

**Quarterly comparisons** – There were 40 *assault* offences recorded in the current quarter, an **increase of 25% (8)** from the previous quarter and an increase of 33% (10) from the same quarter the previous year.

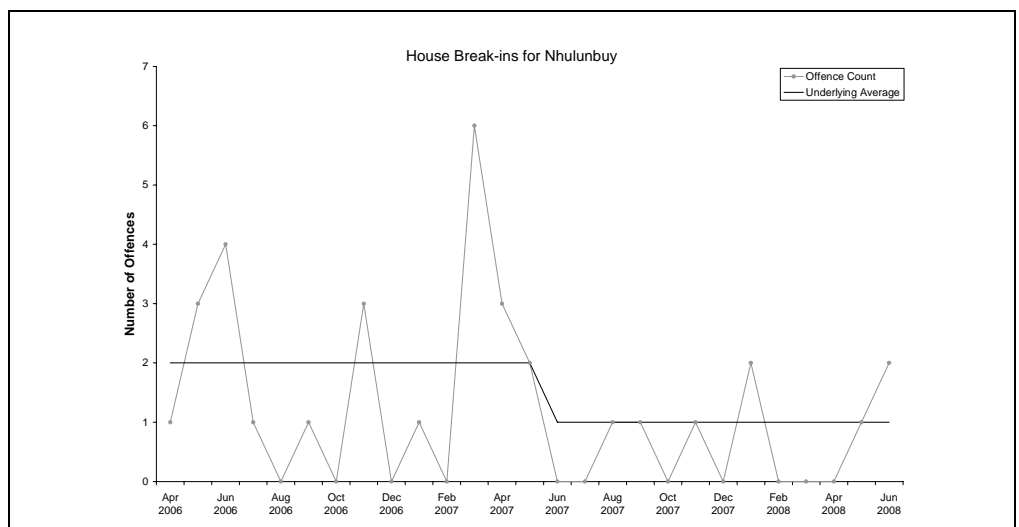


### HOUSE BREAK-INS

**Underlying average** – The underlying average level of *house break-ins* has ranged between 1 and 2 offences per month during the past nine quarters. Its current level of **1 per month** is at the lower end of the range.

**Trend** – Over the past 12 months no trend was identified.

**Quarterly comparisons** – There were 3 *house break-ins* recorded in the current quarter, an **increase of 1 offence** from the previous quarter, but a decrease of 2 offences from the same quarter the previous year



\* Source: The Northern Territory Quarterly Crime & Justice Statistics, Issue 24: June Quarter 2008



# Recorded Crime June Quarter 2008

## Nhulunbuy – key findings\*

### Explanatory Notes

*Largely as a result of its small population, statistics in the Northern Territory can be highly volatile with large swings from one period to the next.*

*Consequently recorded crime statistics are presented over an extended period to present the current period's data within the context of any longer term trends.*

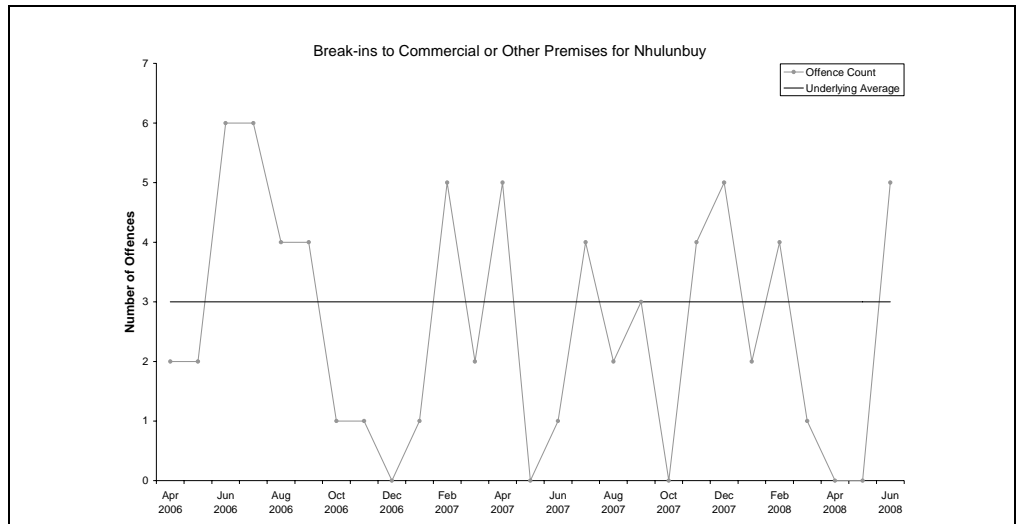
*The underlying average smooths out volatility and identifies major changes in the level of crime.*

### BREAK-INS TO COMMERCIAL OR OTHER PREMISES

**Underlying average** – The underlying average level of *break-ins to commercial or other premises* has remained stable at **3 offences per month** during the past nine quarters.

**Trend** – Over the past 12 months no trend was identified.

**Quarterly comparisons** – There were 5 *break-ins to commercial or other premises* offences recorded in the current quarter, a **decrease of 2 offences** from the previous quarter and a decrease of 1 offence from the same quarter the previous year.



\* Source: The Northern Territory Quarterly Crime & Justice Statistics, Issue 24: June Quarter 2008



# Recorded Crime June Quarter 2008

## Nhulunbuy – key findings\*

### Explanatory Notes

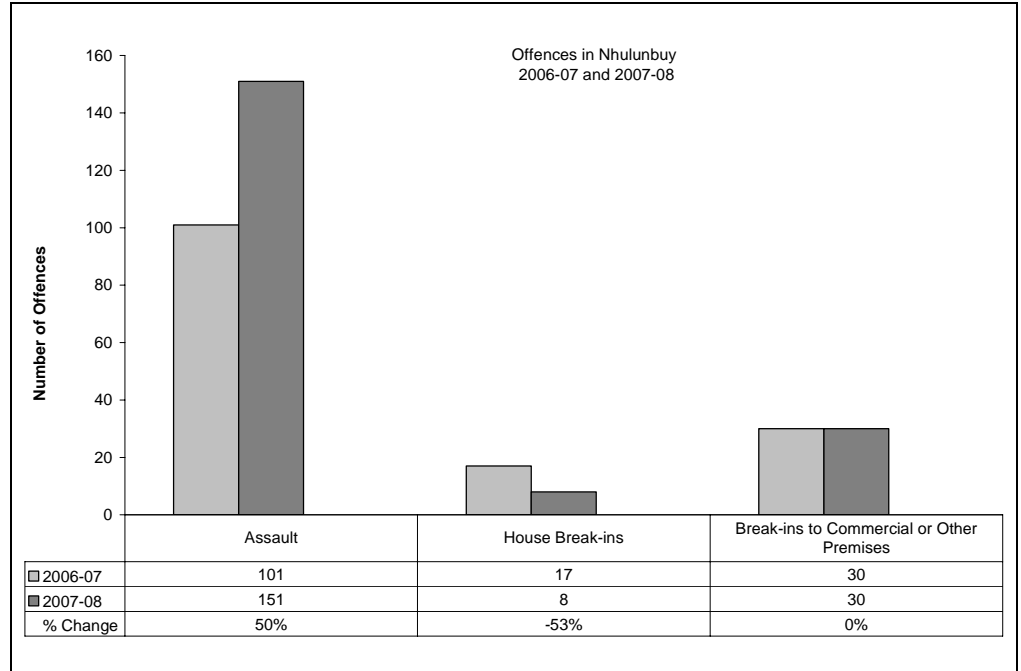
*Largely as a result of its small population, statistics in the Northern Territory can be highly volatile with large swings from one period to the next.*

*Consequently recorded crime statistics are presented over an extended period to present the current period's data within the context of any longer term trends.*

*The underlying average smooths out volatility and identifies major changes in the level of crime.*

### TWELVE-MONTH COMPARISON

Twelve-month figures provide comparable information on how crime has tracked from one 12 month period to the next.



#### Assault

During 2007-08 a total of 151 *assault* offences were recorded, **50% (50)** more than the previous 12 months.

#### House Break-ins

During 2007-08 a total of 8 *house break-ins* were recorded, **53% (9)** less than the previous 12 months.

#### Break-ins to Commercial or Other Premises

During 2007-08 a total of 30 *break-ins to commercial or other premises* were recorded, **no change** from the previous 12 months.

\* Source: The Northern Territory Quarterly Crime & Justice Statistics, Issue 24: June Quarter 2008



# Recorded Crime June Quarter 2008

## Nhulunbuy – key findings\*

### Explanatory Notes

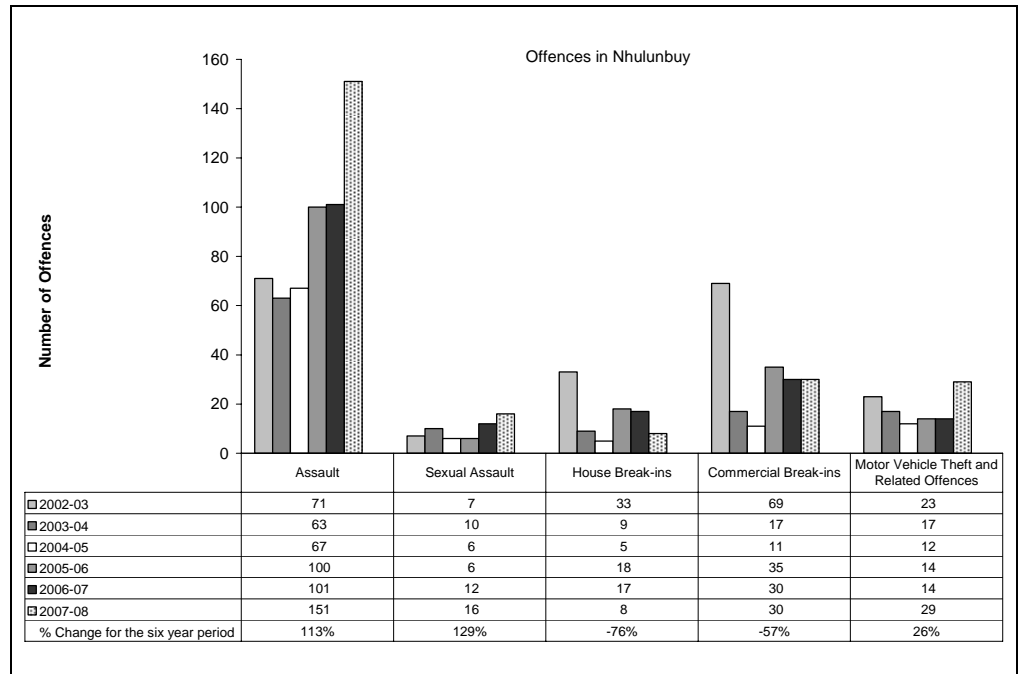
*Largely as a result of its small population, statistics in the Northern Territory can be highly volatile with large swings from one period to the next.*

*Consequently recorded crime statistics are presented over an extended period to present the current period's data within the context of any longer term trends.*

*The underlying average smooths out volatility and identifies major changes in the level of crime.*

### SIX YEAR DATA

Data presented over a six year period provides information to see how recorded crimes have tracked in the longer run.



#### Assault

In late 2004, the Northern Territory Police launched their Violent Crime Reduction Strategy, with a consequential increase in the number of recorded Assault offences in 2005 and subsequent years.

These increases in Assaults largely reflect the impact of operational changes the Police have made in the reporting and recording of domestic violence related Assaults.

During 2007-08 there were 151 recorded *assault* offences, **113% (80) more** than in 2002-03.

#### Sexual Assault

During 2007-08 there were 16 recorded *sexual assault* offences, **129% (9) more** than in 2002-03.

#### House Break-ins

During 2007-08 there were 8 recorded *house break-in* offences, **76% (25) less** than in 2002-03.

#### Commercial Break-ins

During 2007-08 there were 30 recorded *commercial break-in* offences, **57% (39) less** than in 2002-03.

#### Motor Vehicle Theft and Related Offences

During 2007-08 there were 29 recorded *motor vehicle theft and related offences*, **26% (6) more** than in 2002-03.

\* Source: The Northern Territory Recorded Crime data extract for June Quarter 2008



### Explanatory Notes

*Largely as a result of its small population, statistics in the Northern Territory can be highly volatile with large swings from one period to the next.*

*Consequently recorded crime statistics are presented over an extended period to present the current period's data within the context of any longer term trends.*

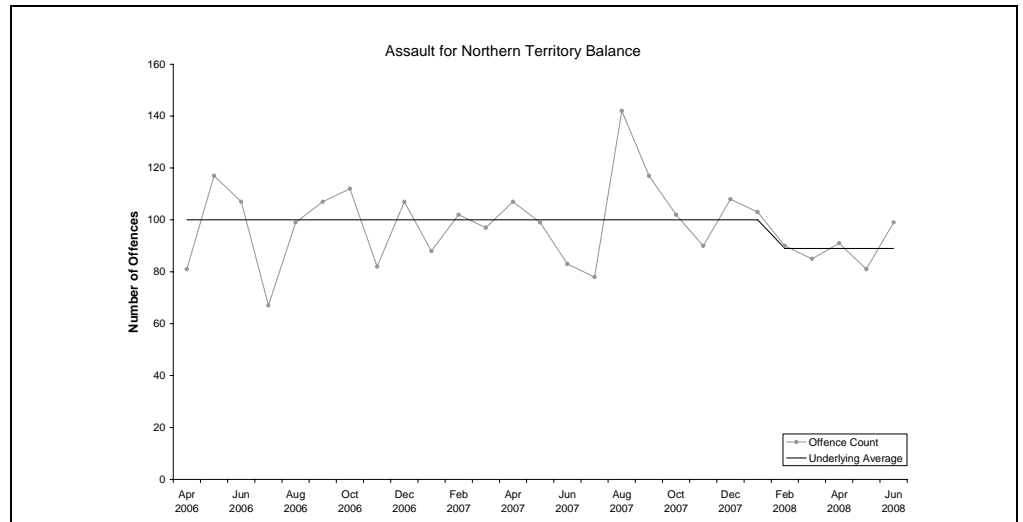
*The underlying average smooths out volatility and identifies major changes in the level of crime.*

### ASSAULT

**Underlying average** – The underlying average level of *assault* has ranged between 89 and 100 offences per month during the past nine quarters. Its current level of **89 per month** is at the lower end of the range.

**Trend** – Over the past 12 months no trend was identified.

**Quarterly comparisons** – There were 271 *assault* offences recorded in the current quarter, a **decrease of 3% (7)** from the previous quarter and a decrease of 6% (18) from the same quarter the previous year.

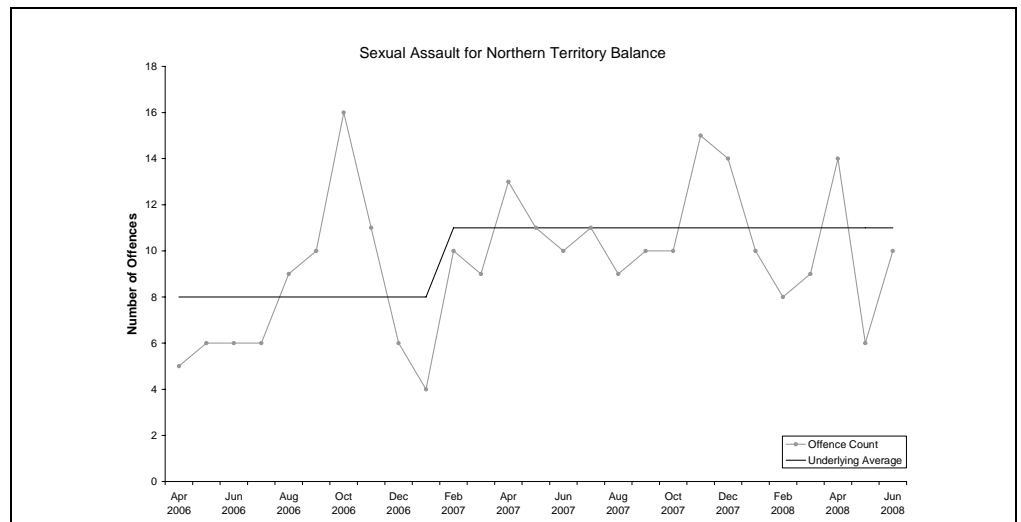


### SEXUAL ASSAULT

**Underlying average** – The underlying average level of *sexual assault* has ranged between 8 and 11 offences per month during the past nine quarters. Its current level of **11 per month** is at the higher end of the range.

**Trend** – Over the past 12 months no trend was identified.

**Quarterly comparisons** – There were 30 *sexual assault* offences recorded in the current quarter, an **increase of 11% (3)** from the previous quarter, but a decrease of 12% (4) from the same quarter the previous year.



\* Source: The Northern Territory Quarterly Crime & Justice Statistics, Issue 24: June Quarter 2008



# Recorded Crime June Quarter 2008

## Northern Territory Balance – key findings\*

### Explanatory Notes

*Largely as a result of its small population, statistics in the Northern Territory can be highly volatile with large swings from one period to the next.*

*Consequently recorded crime statistics are presented over an extended period to present the current period's data within the context of any longer term trends.*

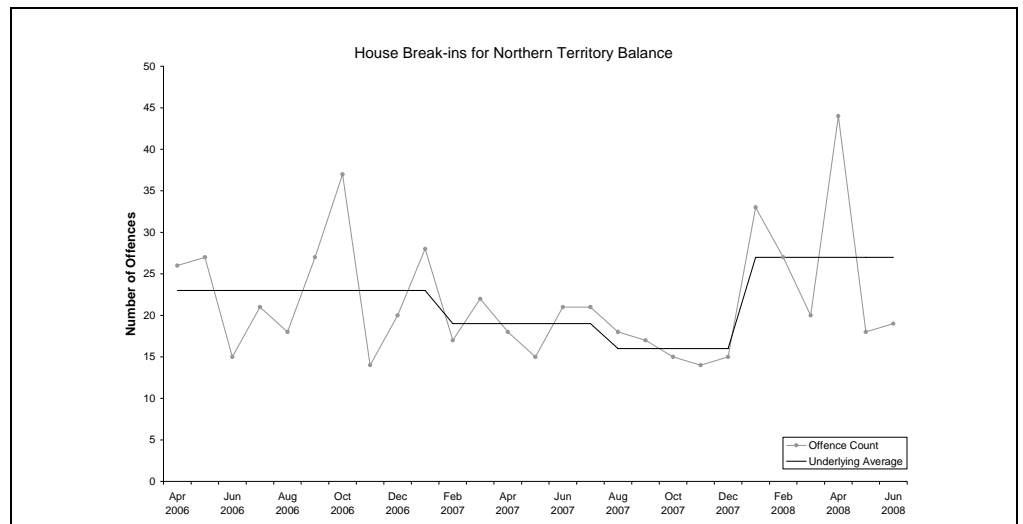
*The underlying average smooths out volatility and identifies major changes in the level of crime.*

### HOUSE BREAK-INS

**Underlying average** – The underlying average level of *house break-ins* has ranged between 16 and 27 offences per month during the past nine quarters. Its current level of **27 per month** is at the higher end of the range.

**Trend** – Over the past 12 months no trend was identified.

**Quarterly comparisons** – There were 81 *house break-ins* recorded in the current quarter, an **increase of 1% (1)** from the previous quarter and an increase of 50% (27) from the same quarter the previous year.

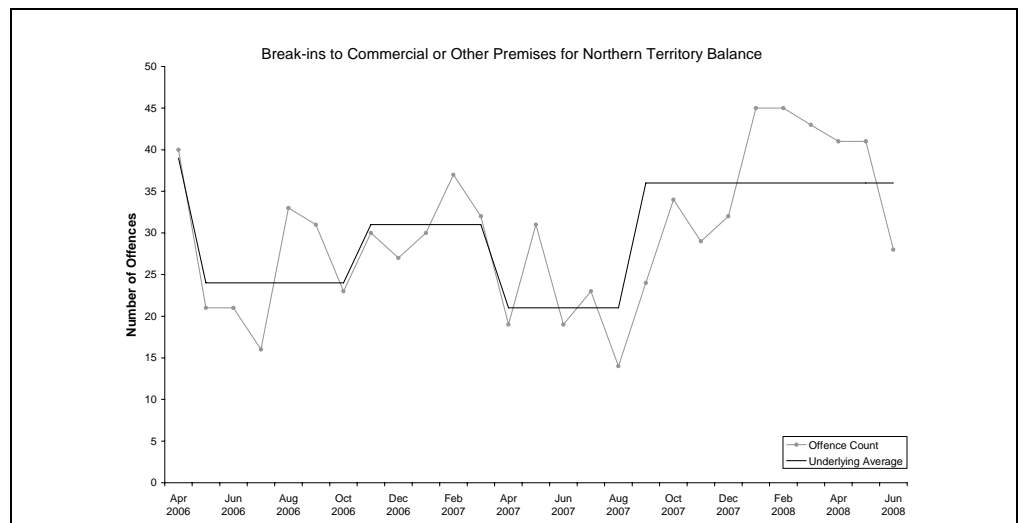


### BREAK-INS TO COMMERCIAL OR OTHER PREMISES

**Underlying average** – The underlying average level of *break-ins to commercial or other premises* has ranged between 21 and 39 offences per month during the past nine quarters. Its current level of **36 per month** is at the higher end of the range.

**Trend** – Over the past 12 months no trend was identified.

**Quarterly comparisons** – There were 110 *break-ins to commercial or other premises* recorded in the current quarter, a **decrease of 17% (23)** from the previous quarter, but an increase of 59% (41) from the same quarter the previous year.



\* Source: The Northern Territory Quarterly Crime & Justice Statistics, Issue 24: June Quarter 2008



### Explanatory Notes

*Largely as a result of its small population, statistics in the Northern Territory can be highly volatile with large swings from one period to the next.*

*Consequently recorded crime statistics are presented over an extended period to present the current period's data within the context of any longer term trends.*

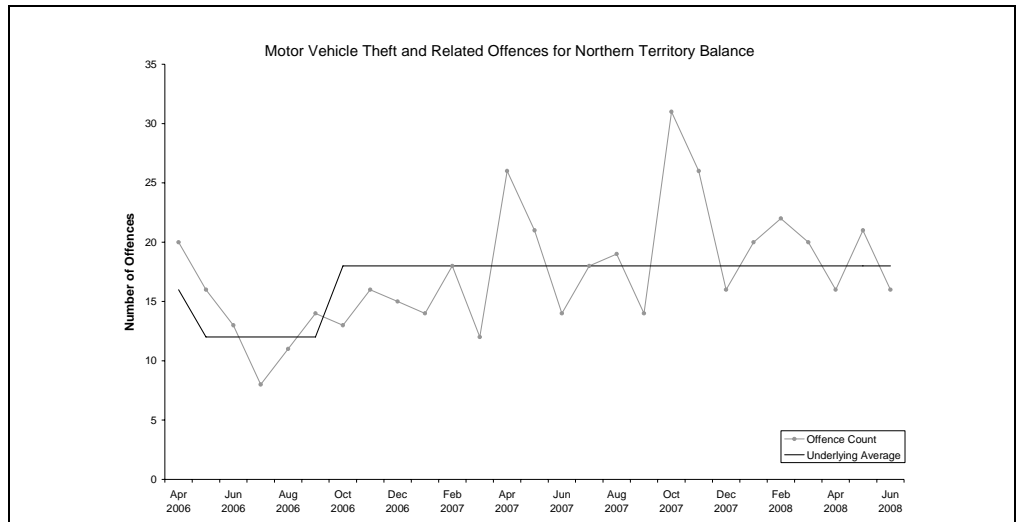
*The underlying average smooths out volatility and identifies major changes in the level of crime.*

### MOTOR VEHICLE THEFT AND RELATED OFFENCES

**Underlying average** – The underlying average level of *motor vehicle theft and related offences* has ranged between 12 and 18 offences per month during the past nine quarters. Its current level of **18 per month** is at the higher end of the range.

**Trend** – Over the past 12 months no trend was identified.

**Quarterly comparisons** – There were 53 *motor vehicle theft and related offences* recorded in the current quarter, a **decrease of 15% (9)** from the previous quarter and a decrease of 13% (8) from the same quarter the previous year



\* Source: The Northern Territory Quarterly Crime & Justice Statistics, Issue 24: June Quarter 2008



# Recorded Crime June Quarter 2008

## Northern Territory Balance – key findings\*

### Explanatory Notes

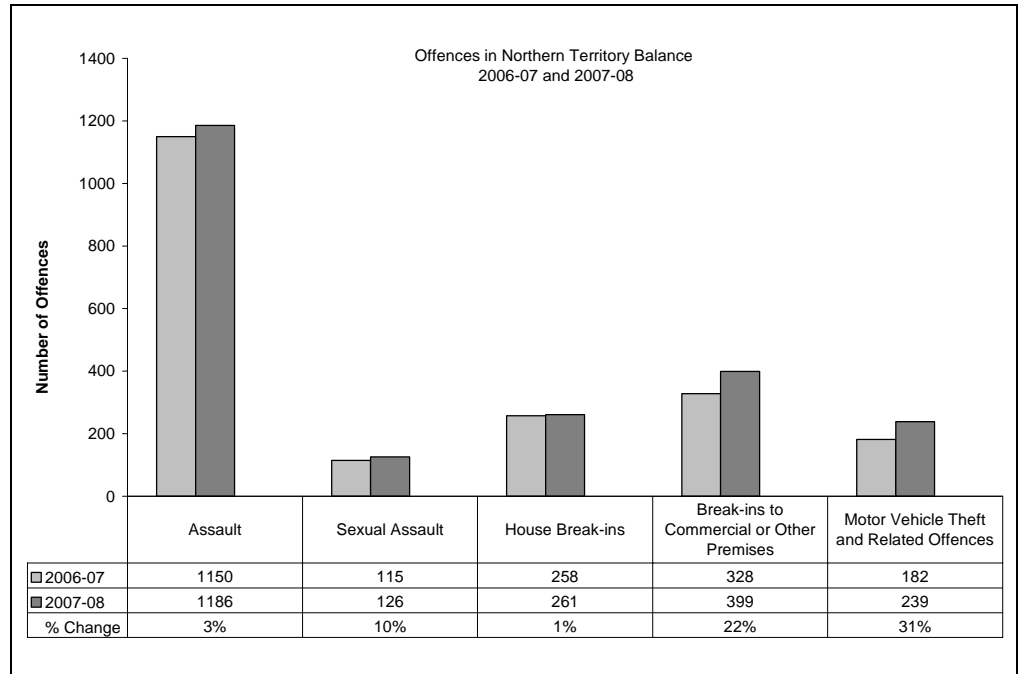
*Largely as a result of its small population, statistics in the Northern Territory can be highly volatile with large swings from one period to the next.*

*Consequently recorded crime statistics are presented over an extended period to present the current period's data within the context of any longer term trends.*

*The underlying average smooths out volatility and identifies major changes in the level of crime.*

### TWELVE-MONTH COMPARISON

Twelve-month figures provide comparable information on how crime has tracked from one 12 month period to the next.



#### Assault

During 2007-08 a total of 1 186 *assault* offences were recorded, **3% (36) more** than the previous 12 months.

#### Sexual Assault

During 2007-08 a total of 126 *sexual assault* offences were recorded, **10% (11) more** than the previous 12 months.

#### House Break-ins

During 2007-08 a total of 261 *house break-ins* were recorded, **1% (3) more** than the previous 12 months.

#### Break-ins to Commercial or Other Premises

During 2007-08 a total of 399 *break-ins to commercial or other premises* were recorded, **22% (71) more** than the previous 12 months.

#### Motor Vehicle Theft and Related Offences

During 2007-08 a total of 239 *motor vehicle theft and related offences* were recorded, **31% (57) more** than the previous 12 months.

\* Source: The Northern Territory Quarterly Crime & Justice Statistics, Issue 24: June Quarter 2008



### Explanatory Notes

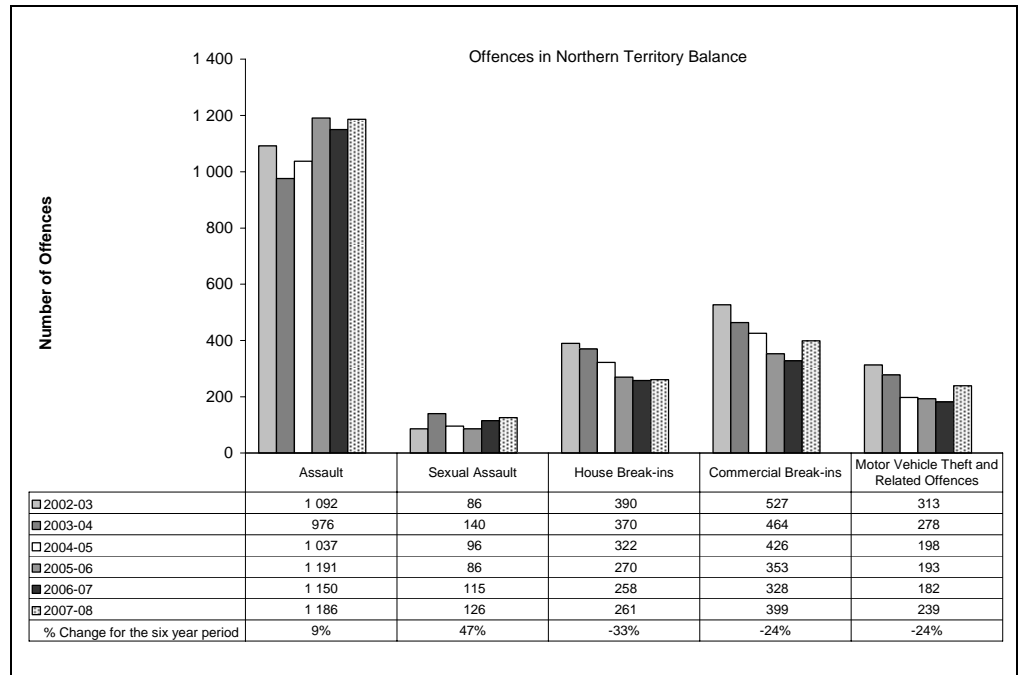
*Largely as a result of its small population, statistics in the Northern Territory can be highly volatile with large swings from one period to the next.*

*Consequently recorded crime statistics are presented over an extended period to present the current period's data within the context of any longer term trends.*

*The underlying average smooths out volatility and identifies major changes in the level of crime.*

### SIX YEAR DATA

Data presented over a six year period provides information to see how recorded crimes have tracked in the longer run.



#### Assault

In late 2004, the Northern Territory Police launched their Violent Crime Reduction Strategy, with a consequential increase in the number of recorded Assault offences in 2005 and subsequent years.

These increases in Assaults largely reflect the impact of operational changes the Police have made in the reporting and recording of domestic violence related Assaults.

During 2007-08 there were 1 186 recorded *assault* offences, **9% (94) more** than in 2002-03.

#### Sexual Assault

During 2007-08 there were 126 recorded *sexual assault* offences, **47% (40) more** than in 2002-03.

#### House Break-ins

During 2007-08 there were 261 recorded *house break-in* offences, **33% (129) less** than in 2002-03.

#### Commercial Break-ins

During 2007-08 there were 399 recorded *commercial break-in* offences, **24% (128) less** than in 2002-03.

#### Motor Vehicle Theft and Related Offences

During 2007-08 there were 239 recorded *motor vehicle theft and related offences*, **24% (74) less** than in 2002-03.

\* Source: The Northern Territory Recorded Crime data extract for June Quarter 2008