



Recorded Crime June Quarter 2007

Northern Territory – key findings*

Explanatory Notes

Largely as a result of its small population, statistics in the Northern Territory can be highly volatile with large swings from one period to the next.

Consequently recorded crime statistics are presented over an extended period to present the current period's data within the context of any longer term trends.

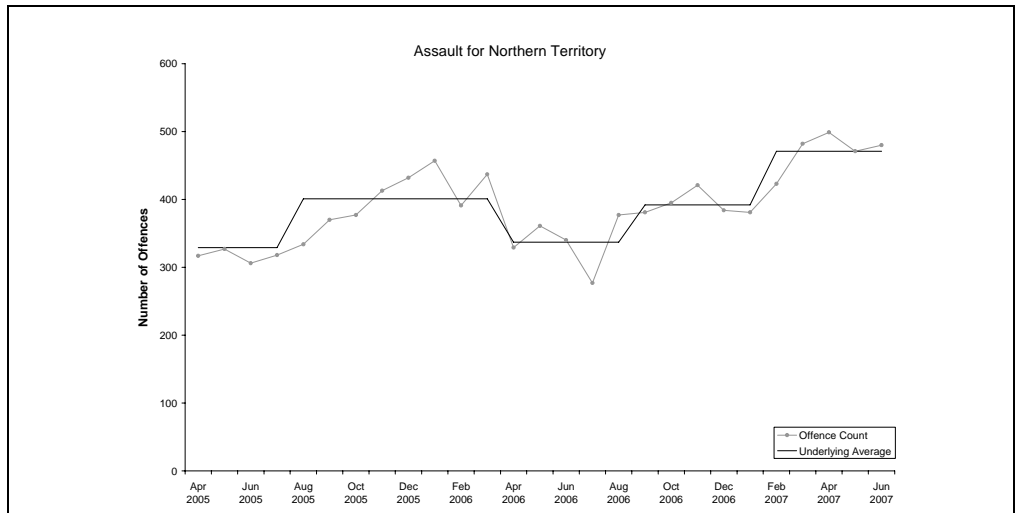
The underlying average smooths out volatility and identifies major changes in the level of crime.

ASSAULT

Underlying average – The underlying average level of recorded *assault* offences has ranged between 329 and 471 offences per month during the past nine quarters. Its current level of **471 per month** is at the higher end of the range.

Trend – Over the past 12 months an upward trend was identified.

Quarterly comparisons – There were 1450 recorded *assault* offences in the Territory in the current quarter, an **increase of 13% (164)** from the previous quarter and an increase of 41% (420) from the same quarter the previous year.

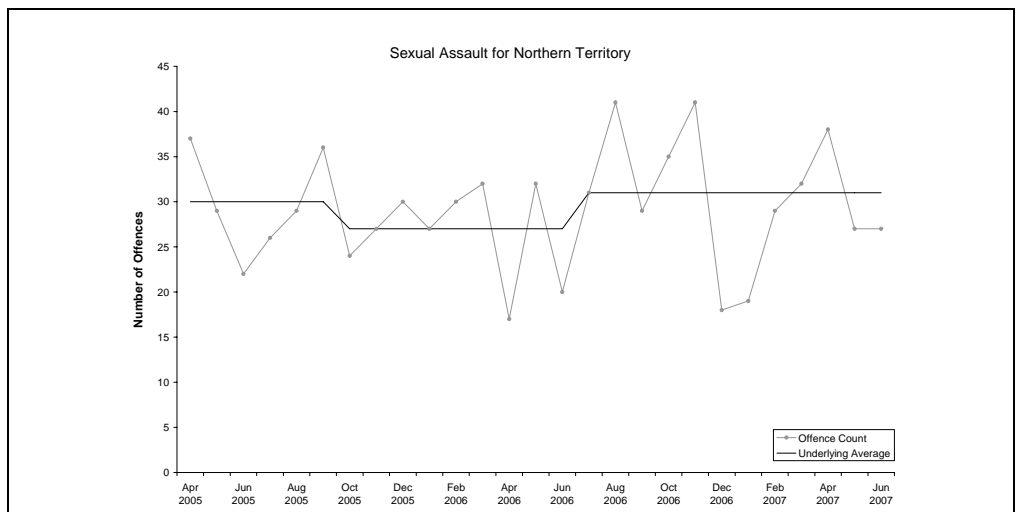


SEXUAL ASSAULT

Underlying average – The underlying average level of recorded *sexual assault* offences has ranged between 27 and 31 offences per month during the past nine quarters. Its current level of **31 per month** is at the higher end of the range.

Trend – Over the past 12 months no trend was identified.

Quarterly comparisons – There were 92 recorded *sexual assault* offences in the Territory in the current quarter, an **increase of 15% (12)** from the previous quarter and an increase of 33% (23) from the same quarter the previous year.



* Source: The Northern Territory Quarterly Crime & Justice Statistics, Issue 20: June Quarter 2007



Recorded Crime June Quarter 2007 Northern Territory – key findings*

Explanatory Notes

Largely as a result of its small population, statistics in the Northern Territory can be highly volatile with large swings from one period to the next.

Consequently recorded crime statistics are presented over an extended period to present the current period's data within the context of any longer term trends.

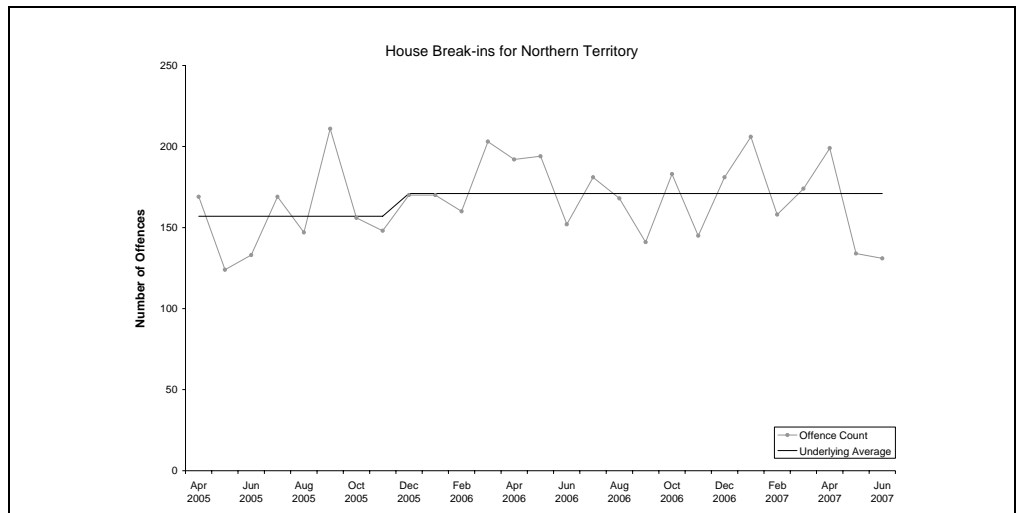
The underlying average smooths out volatility and identifies major changes in the level of crime.

HOUSE BREAK-INS

Underlying average – The underlying average level of *house break-ins* has ranged between 157 and 171 offences per month during the past nine quarters. Its current level of **171 per month** is at the higher end of the range.

Trend – Over the past 12 months no trend was identified.

Quarterly comparisons – There were 464 *house break-ins* in the current quarter, a **decrease of 14% (74)** from the previous quarter and a decrease of 14% (74) from the same quarter the previous year.

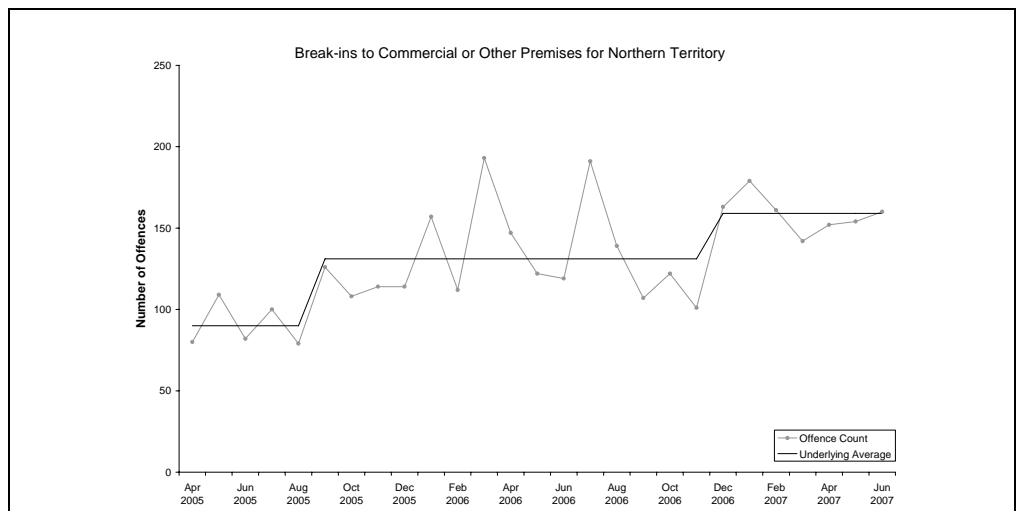


BREAK-INS TO COMMERCIAL OR OTHER PREMISES

Underlying average – The underlying average level of *break-ins to commercial or other premises* has ranged between 90 and 159 offences per month during the past nine quarters. Its current level of **159 per month** is at the higher end of the range.

Trend – Over the past 12 months no trend was identified.

Quarterly comparisons – There were 466 offences relating to *break-ins to commercial or other premises* in the current quarter, a **decrease of 3% (16)** from the previous quarter but an increase of 20% (78) from the same quarter the previous year.



* Source: The Northern Territory Quarterly Crime & Justice Statistics, Issue 20: June Quarter 2007



Recorded Crime June Quarter 2007 Northern Territory – key findings*

Explanatory Notes

Largely as a result of its small population, statistics in the Northern Territory can be highly volatile with large swings from one period to the next.

Consequently recorded crime statistics are presented over an extended period to present the current period's data within the context of any longer term trends.

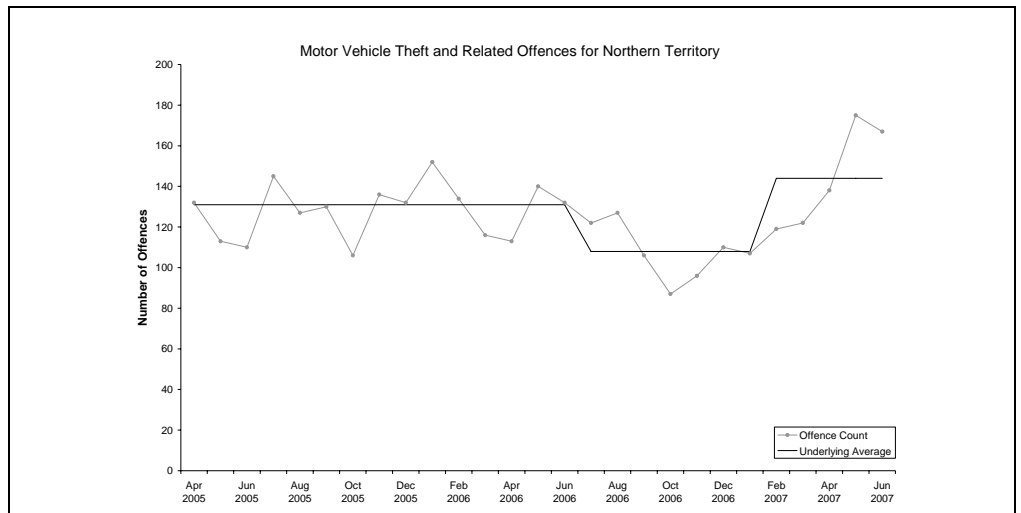
The underlying average smooths out volatility and identifies major changes in the level of crime.

MOTOR VEHICLE THEFT AND RELATED OFFENCES

Underlying average – The underlying average level of *motor vehicle theft and related offences* has ranged between 108 and 144 offences per month during the past nine quarters. Its current level of **144 per month** is at the higher end of the range.

Trend – Over the past 12 months an upward trend was identified.

Quarterly comparisons – There were 480 *motor vehicle theft and related offences* in the current quarter, an **increase of 38% (132)** from the previous quarter and an increase of 25% (95) from the same quarter the previous year.



* Source: The Northern Territory Quarterly Crime & Justice Statistics, Issue 20: June Quarter 2007



Recorded Crime June Quarter 2007

Northern Territory – key findings*

Explanatory Notes

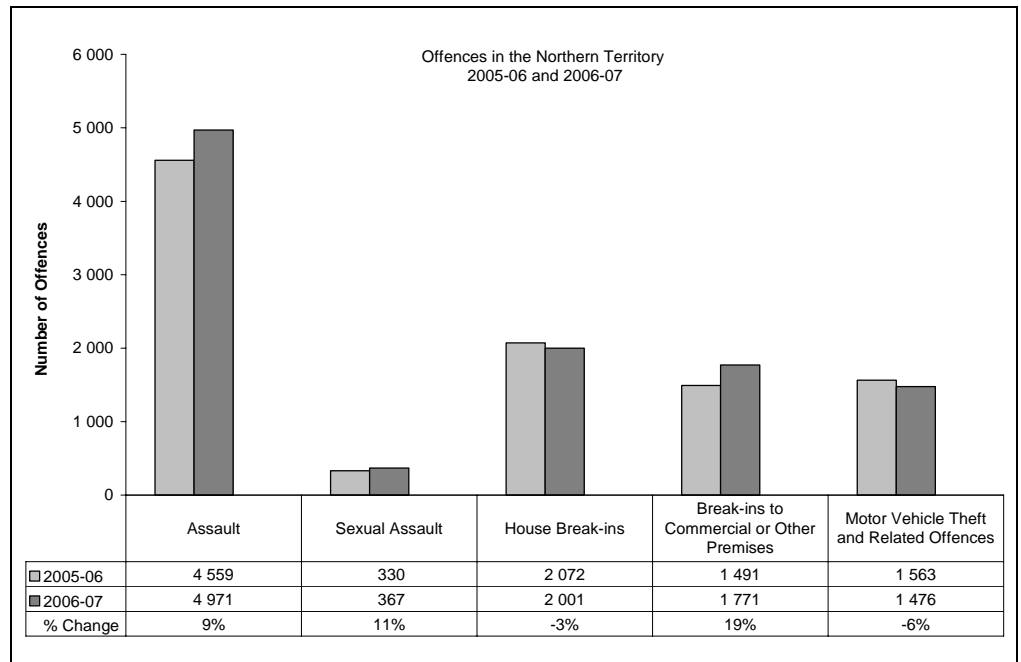
Largely as a result of its small population, statistics in the Northern Territory can be highly volatile with large swings from one period to the next.

Consequently recorded crime statistics are presented over an extended period to present the current period's data within the context of any longer term trends.

The underlying average smooths out volatility and identifies major changes in the level of crime.

TWELVE-MONTH COMPARISON

Twelve-month figures provide comparable information on how crime has tracked from one 12 month period to the next.



Assault

During 2006-07, a total of 4 971 *assault* offences were recorded, **9% (412) more** than the previous 12 months.

Sexual Assault

During 2006-07, a total of 367 *sexual assault* offences were recorded, **11% (37) more** than the previous 12 months.

House Break-ins

During 2006-07, a total of 2 001 *house break-ins* were recorded, **3% (71) less** than the previous 12 months.

Break-ins to Commercial or Other Premises

During 2006-07, a total of 1 771 *break-ins to commercial or other premises* were recorded, **19% (280) more** than the previous 12 months.

Motor Vehicle Theft and Related Offences

During 2006-07, a total of 1 476 *motor vehicle theft and related offences* were recorded, **6% (87) less** than the previous 12 months.

* Source: The Northern Territory Quarterly Crime & Justice Statistics, Issue 20: June Quarter 2007



Recorded Crime June Quarter 2007

Northern Territory – key findings*

Explanatory Notes

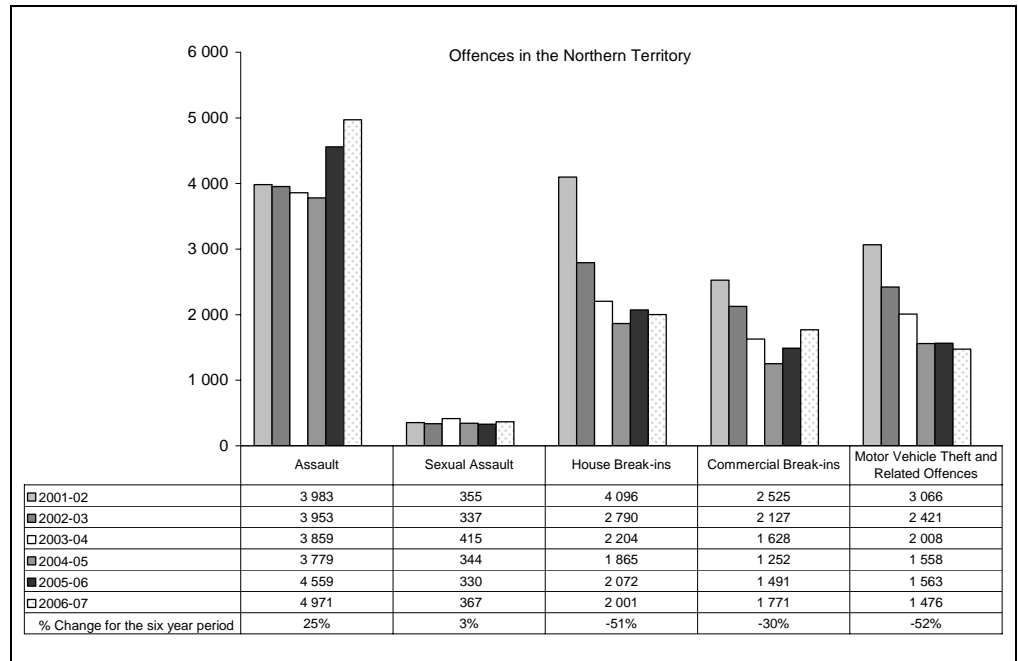
Largely as a result of its small population, statistics in the Northern Territory can be highly volatile with large swings from one period to the next.

Consequently recorded crime statistics are presented over an extended period to present the current period's data within the context of any longer term trends.

The underlying average smooths out volatility and identifies major changes in the level of crime.

SIX YEAR DATA

Data presented over a six year period provides information to see how recorded crimes have tracked in the longer run.



Assault

In late 2004, the Northern Territory Police launched their Violent Crime Reduction Strategy, with a consequential increase in the number of recorded Assault offences in 2005 and 2006.

These increases in Assaults largely reflect the impact of operational changes the Police have made in the reporting and recording of domestic violence related Assaults.

During 2006-07, there were 4 971 recorded Assault offences, **25% (988) more** than in 2001-02.

Sexual Assault

During 2006-07, there were 367 recorded Sexual Assault offences, **3% (12) more** than in 2001-02.

House Break-ins

During 2006-07, there were 2 001 recorded House Break-in offences, **51% (2 095) less** than in 2001-02.

Commercial Break-ins

During 2006-07, there were 1 771 recorded Commercial Break-in offences, **30% (754) less** than in 2001-02.

Motor Vehicle Theft and Related Offences

During 2006-07, there were 1 476 recorded Motor Vehicle Theft and Related Offences, **52% (1 590) less** than in 2001-02.

* Source: The Northern Territory Recorded Crime data extract for June Quarter 2007.

Recorded Crime June Quarter 2007

Darwin – key findings*

Explanatory Notes

Largely as a result of its small population, statistics in the Northern Territory can be highly volatile with large swings from one period to the next.

Consequently recorded crime statistics are presented over an extended period to present the current period's data within the context of any longer term trends.

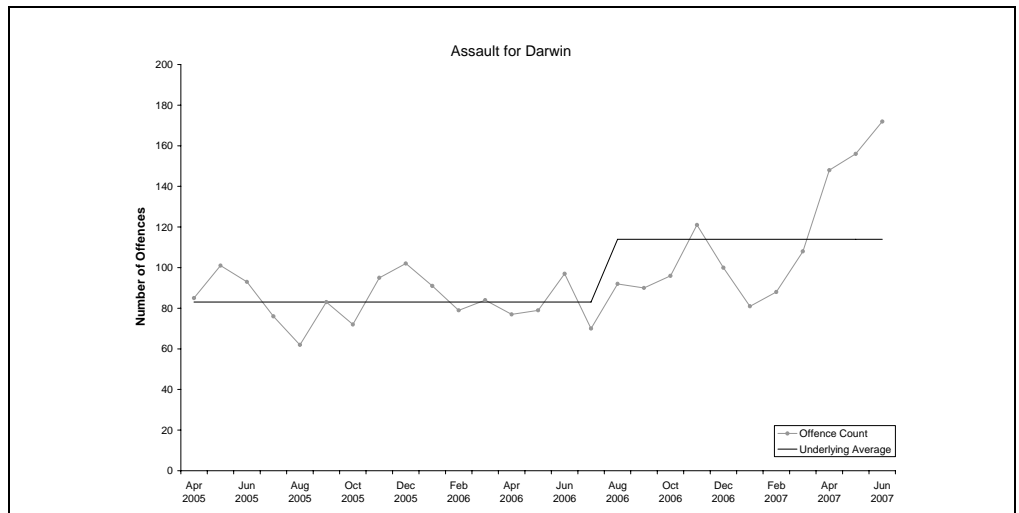
The underlying average smooths out volatility and identifies major changes in the level of crime.

ASSAULT

Underlying average – The underlying average level of recorded *assault* offences has ranged between 83 and 114 offences per month during the past nine quarters. Its current level of **114 per month** is at the higher end of the range.

Trend – Over the past 12 months an upward trend was identified.

Quarterly comparisons – There were 476 recorded *assault* offences in Darwin in the current quarter, an **increase of 72% (199)** from the previous quarter and an increase of 88% (223) from the same quarter the previous year.

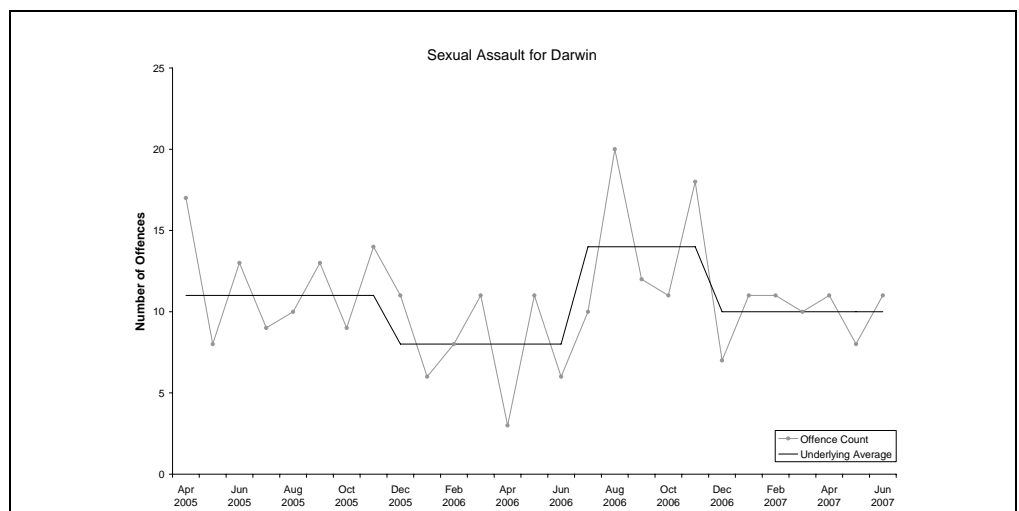


SEXUAL ASSAULT

Underlying average – The underlying average level of *sexual assault* offences has ranged between 8 and 14 offences per month during the past nine quarters. Its current level of **10 per month** is in the middle of the range.

Trend – Over the past 12 months no trend was identified.

Quarterly comparisons – There were 30 recorded *sexual assault* offences in the current quarter, a **decrease of 6% (2)** from the previous quarter, but an increase of 50% (10) from the same quarter the previous year.



* Source: The Northern Territory Quarterly Crime & Justice Statistics, Issue 20: June Quarter 2007



Recorded Crime June Quarter 2007

Darwin – key findings*

Explanatory Notes

Largely as a result of its small population, statistics in the Northern Territory can be highly volatile with large swings from one period to the next.

Consequently recorded crime statistics are presented over an extended period to present the current period's data within the context of any longer term trends.

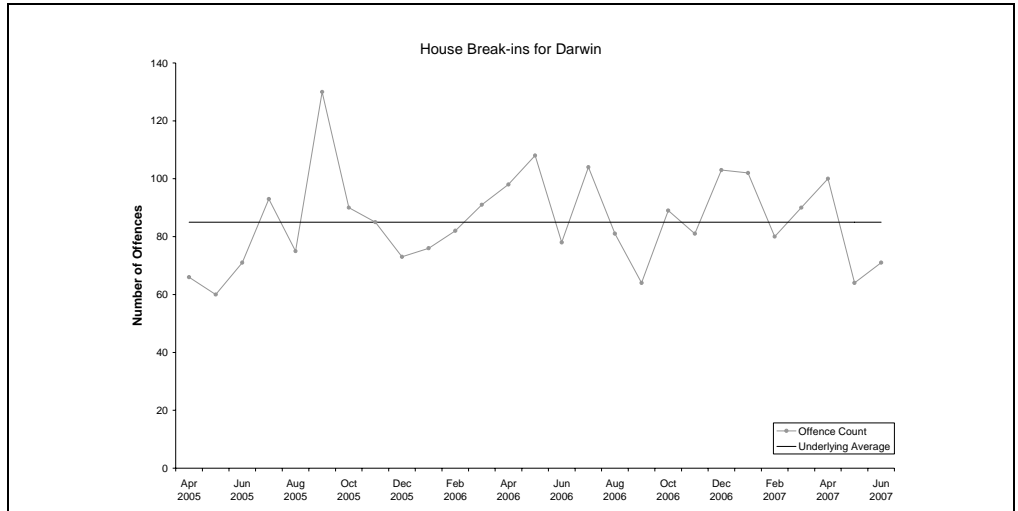
The underlying average smooths out volatility and identifies major changes in the level of crime.

HOUSE BREAK-INS

Underlying average – The underlying average level of *house break-ins* has remained stable at **85 offences per month** during the past nine quarters.

Trend – Over the past 12 months no trend was identified.

Quarterly comparisons – There were 235 *house break-ins* in the current quarter, a decrease of **14% (37)** from the previous quarter and a decrease of 17% (49) from the same quarter the previous year.

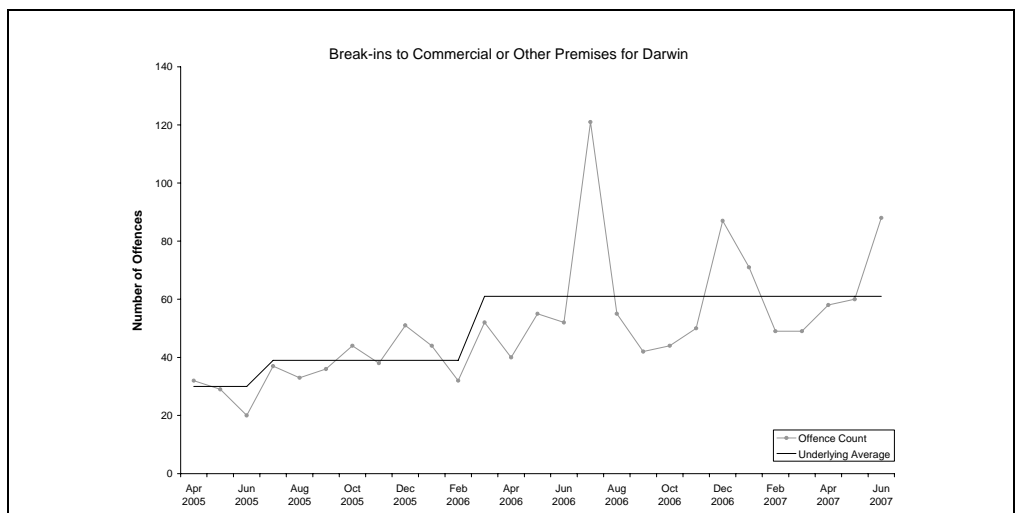


BREAK-INS TO COMMERCIAL OR OTHER PREMISES

Underlying average – The underlying average level of *break-ins to commercial or other premises* has ranged between 30 and 61 offences per month during the past nine quarters. Its current level of **61 per month** is at the higher end of the range.

Trend – Over the past 12 months no trend was identified.

Quarterly comparisons – There were 206 offences relating to *break-ins to commercial or other premises* in the current quarter, an **increase of 22% (37)** from the previous quarter and an increase of 40% (59) from the same quarter the previous year.



* Source: The Northern Territory Quarterly Crime & Justice Statistics, Issue 20: June Quarter 2007



Recorded Crime June Quarter 2007

Darwin – key findings*

Explanatory Notes

Largely as a result of its small population, statistics in the Northern Territory can be highly volatile with large swings from one period to the next.

Consequently recorded crime statistics are presented over an extended period to present the current period's data within the context of any longer term trends.

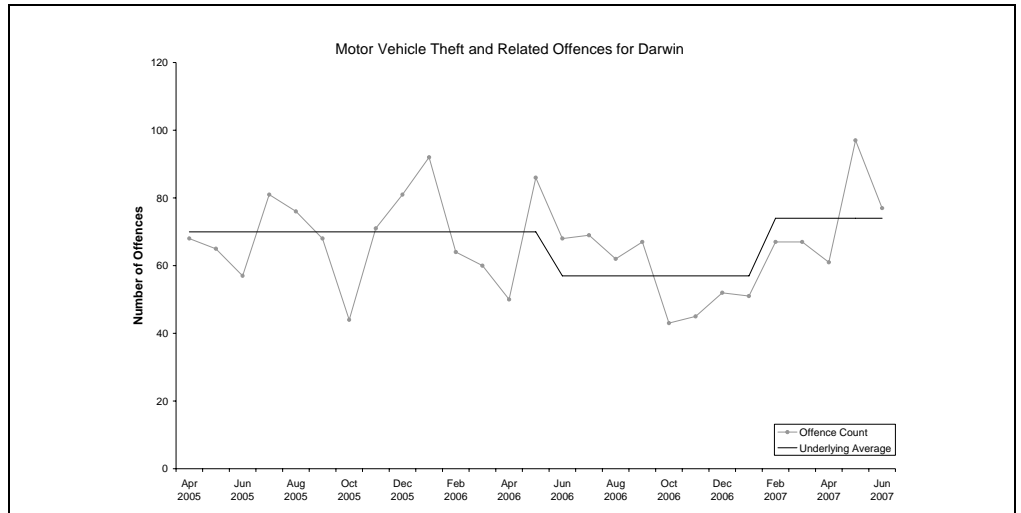
The underlying average smooths out volatility and identifies major changes in the level of crime.

MOTOR VEHICLE THEFT AND RELATED OFFENCES

Underlying average – The underlying average level of *motor vehicle theft and related offences* has ranged between 57 and 74 offences per month during the past nine quarters. Its current level of **74 per month** is at the higher end of the range.

Trend – Over the past 12 months no trend was identified.

Quarterly comparisons – There were 235 *motor vehicle theft and related offences* recorded in the current quarter, an **increase of 27% (50)** from the previous quarter and an increase of 15% (31) from the same quarter the previous year.



* Source: The Northern Territory Quarterly Crime & Justice Statistics, Issue 20: June Quarter 2007



Recorded Crime June Quarter 2007

Darwin – key findings*

Explanatory Notes

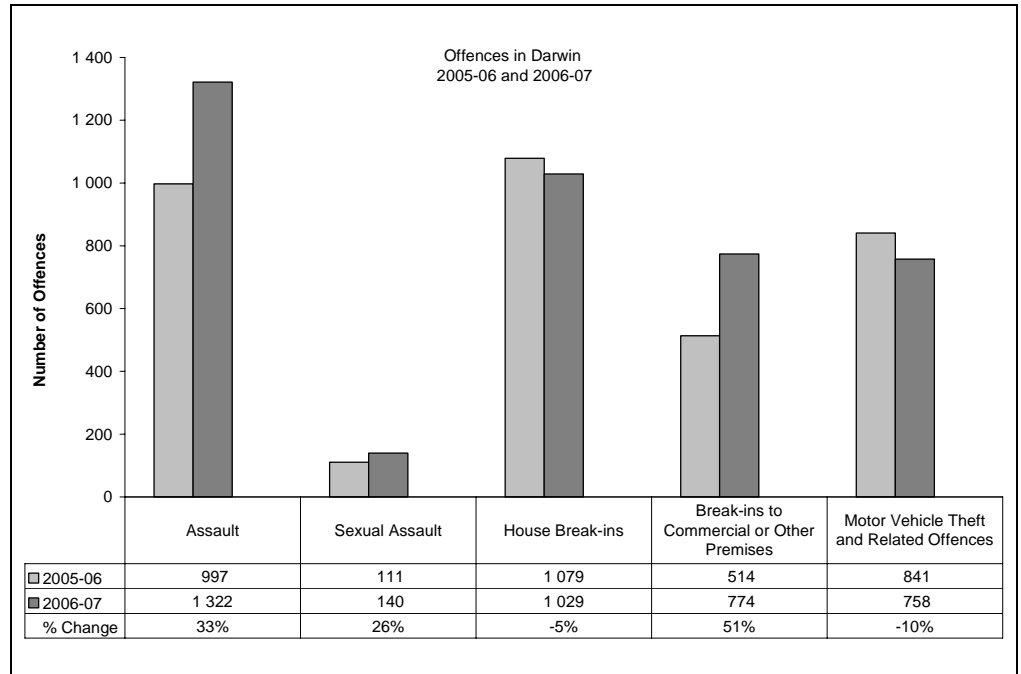
Largely as a result of its small population, statistics in the Northern Territory can be highly volatile with large swings from one period to the next.

Consequently recorded crime statistics are presented over an extended period to present the current period's data within the context of any longer term trends.

The underlying average smooths out volatility and identifies major changes in the level of crime.

TWELVE-MONTH COMPARISON

Twelve-month figures provide comparable information on how crime has tracked from one 12 month period to the next.



Assault

During 2006-07, a total of 1 322 *assault* offences were recorded, **33% (325) more** than the previous 12 months.

Sexual Assault

During 2006-07, a total of 140 *sexual assault* offences were recorded, **26% (29) more** than in the previous 12 months.

House Break-ins

During 2006-07, a total of 1 029 *house break-ins* were recorded, **5% (50) less** than the previous 12 months.

Break-ins to Commercial or Other Premises

During 2006-07, a total of 774 *break-ins to commercial or other premises* were recorded, **51% (260) more** than the previous 12 months.

Motor Vehicle Theft and Related Offences

During 2006-07, a total of 758 *motor vehicle theft and related offences* were recorded, **10% (83) less** than the previous 12 months.

* Source: The Northern Territory Quarterly Crime & Justice Statistics, Issue 20: June Quarter 2007



Explanatory Notes

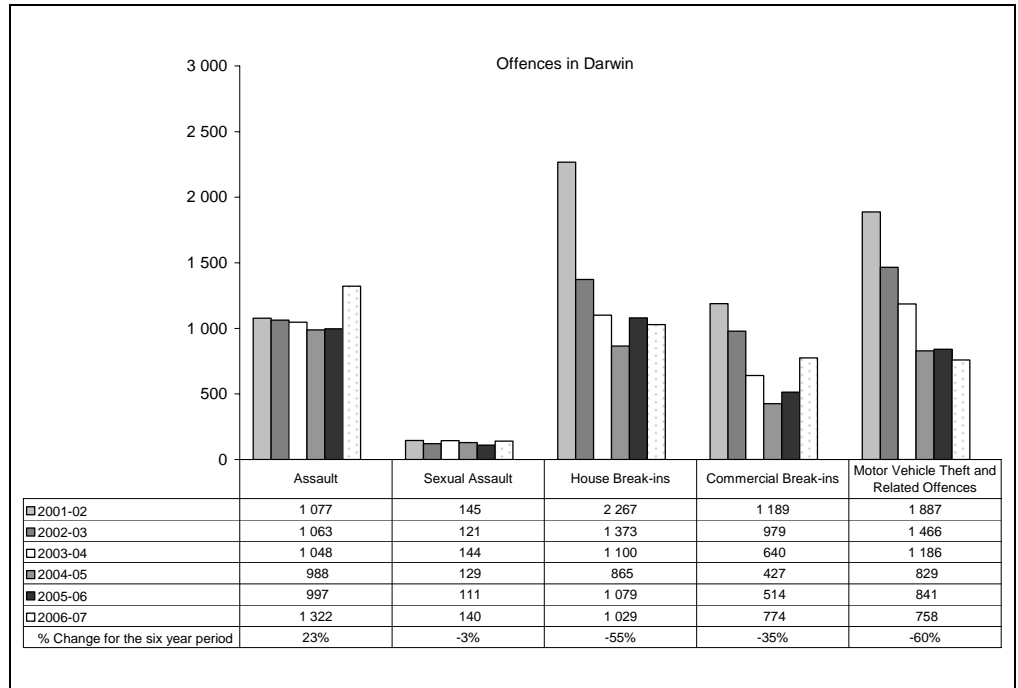
Largely as a result of its small population, statistics in the Northern Territory can be highly volatile with large swings from one period to the next.

Consequently recorded crime statistics are presented over an extended period to present the current period's data within the context of any longer term trends.

The underlying average smooths out volatility and identifies major changes in the level of crime.

SIX YEAR DATA

Data presented over a six year period provides information to see how recorded crimes have tracked in the longer run.



Assault

In late 2004, the Northern Territory Police launched their Violent Crime Reduction Strategy, with a consequential increase in the number of recorded Assault offences in 2005 and 2006.

These increases in Assaults largely reflect the impact of operational changes the Police have made in the reporting and recording of domestic violence related Assaults.

During 2006-07, there were 1 322 recorded Assault offences, **23% (245) more** than in 2001-02.

Sexual Assault

During 2006-07, there were 140 recorded Sexual Assault offences, **3% (5) less** than in 2001-02.

House Break-ins

During 2006-07, there were 1 029 recorded House Break-in offences, **55% (1 238) less** than in 2001-02.

Commercial Break-ins

During 2006-07, there were 774 recorded Commercial Break-in offences, **35% (415) less** than in 2001-02.

Motor Vehicle Theft and Related Offences

During 2006-07, there were 758 recorded Motor Vehicle Theft and Related Offences, **60% (1 129) less** than in 2001-02.

* Source: The Northern Territory Recorded Crime data extract for June Quarter 2007.



Recorded Crime June Quarter 2007

Palmerston – key findings*

Explanatory Notes

Largely as a result of its small population, statistics in the Northern Territory can be highly volatile with large swings from one period to the next.

Consequently recorded crime statistics are presented over an extended period to present the current period's data within the context of any longer term trends.

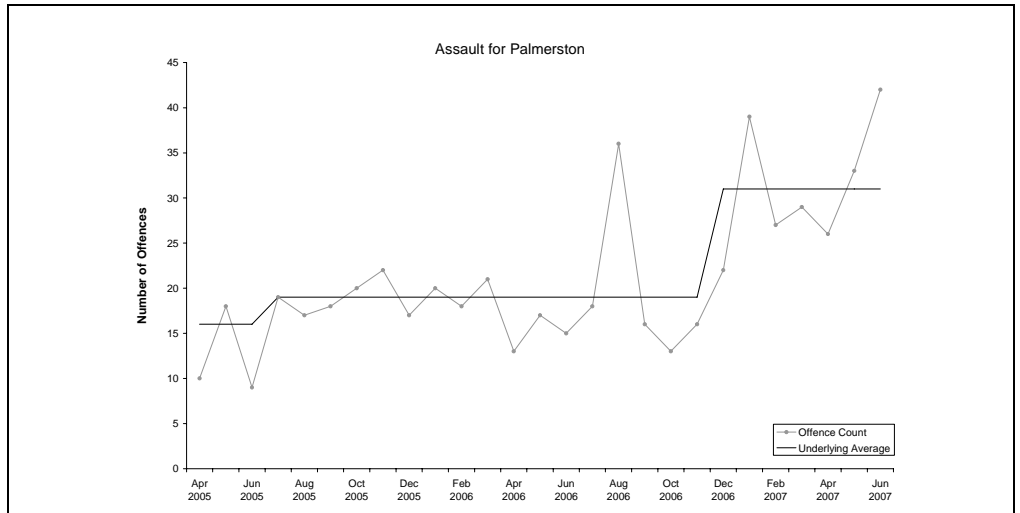
The underlying average smooths out volatility and identifies major changes in the level of crime.

ASSAULT

Underlying average – The underlying average level of recorded assault offences has ranged between 16 and 31 offences per month during the past nine quarters. Its current level of 31 per month is at the higher end of the range.

Trend – Over the past 12 months an upward trend was identified.

Quarterly comparisons – There were 101 recorded assault offences in Palmerston in the current quarter, an increase of 6% (6) from the previous quarter and an increase of 124% (56) from the same quarter the previous year.

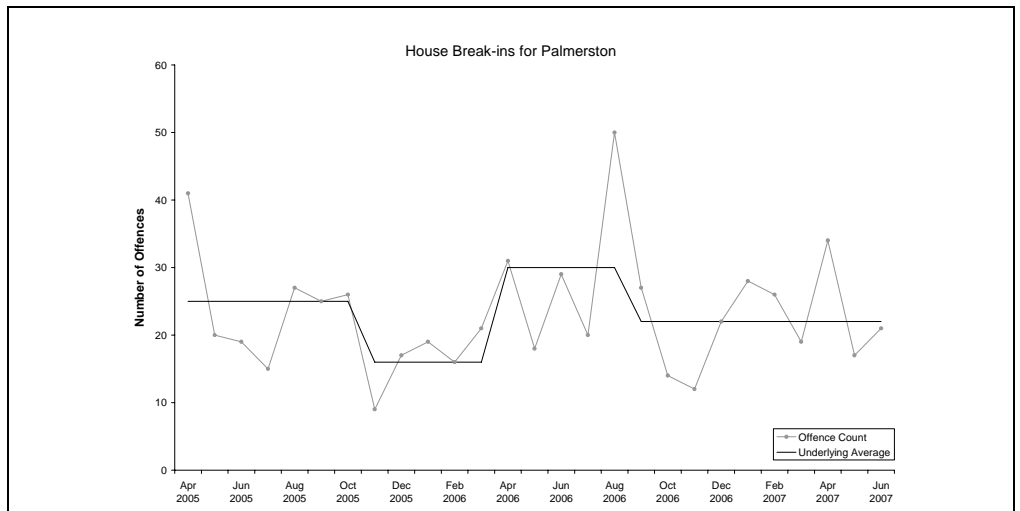


HOUSE BREAK-INS

Underlying average – The underlying average level of house break-ins has ranged between 16 and 30 offences per month during the past nine quarters. Its current level of 22 per month is in the middle of the range.

Trend – Over the past 12 months no trend was identified.

Quarterly comparisons – There were 72 house break-ins in the current quarter, a decrease of 1% (1) from the previous quarter and a decrease of 8% (6) from the same quarter the previous year.



* Source: The Northern Territory Quarterly Crime & Justice Statistics, Issue 20: June Quarter 2007



Recorded Crime June Quarter 2007

Palmerston – key findings*

Explanatory Notes

Largely as a result of its small population, statistics in the Northern Territory can be highly volatile with large swings from one period to the next.

Consequently recorded crime statistics are presented over an extended period to present the current period's data within the context of any longer term trends.

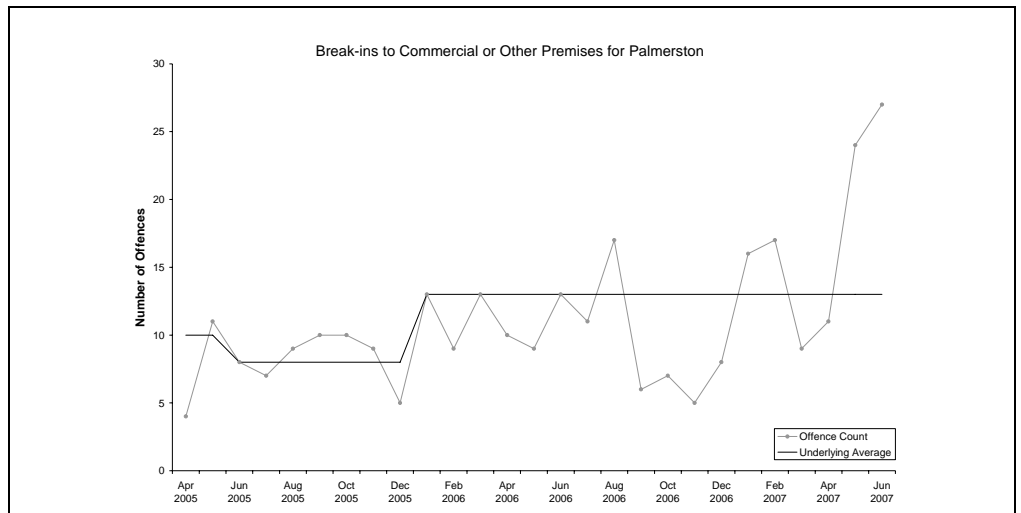
The underlying average smooths out volatility and identifies major changes in the level of crime.

BREAK-INS TO COMMERCIAL OR OTHER PREMISES

Underlying average – The underlying average level of *break-ins to commercial or other premises* has ranged between 8 and 13 offences per month during the past nine quarters. Its current level of **13 per month** is at the higher end of the range.

Trend – Over the past 12 months no trend was identified.

Quarterly comparisons – There were 62 *break-ins to commercial or other premises* in the current quarter, an **increase of 48% (20)** from the previous quarter and an increase of 94% (30) from the same quarter the previous year.

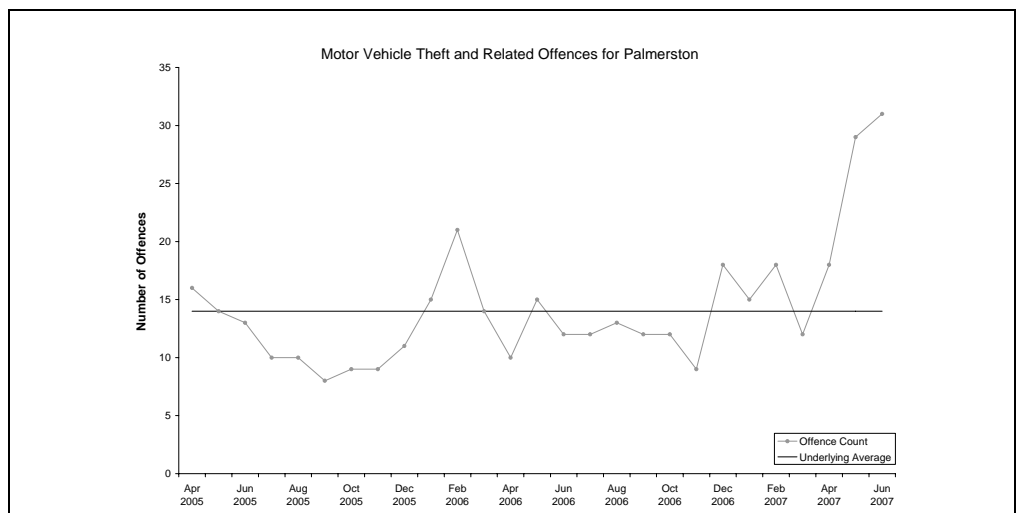


MOTOR VEHICLE THEFT AND RELATED OFFENCES

Underlying average – The underlying average level of *motor vehicle theft and related offences* has remained stable at **14 offences per month** during the past nine quarters.

Trend – Over the past 12 months an upward trend was identified.

Quarterly comparisons – There were 78 recorded *motor vehicle theft and related offences* in the current quarter, an **increase of 73% (33)** from the previous quarter and an increase of 111% (41) from the same quarter the previous year.



* Source: The Northern Territory Quarterly Crime & Justice Statistics, Issue 20: June Quarter 2007



Palmerston – key findings*

Explanatory Notes

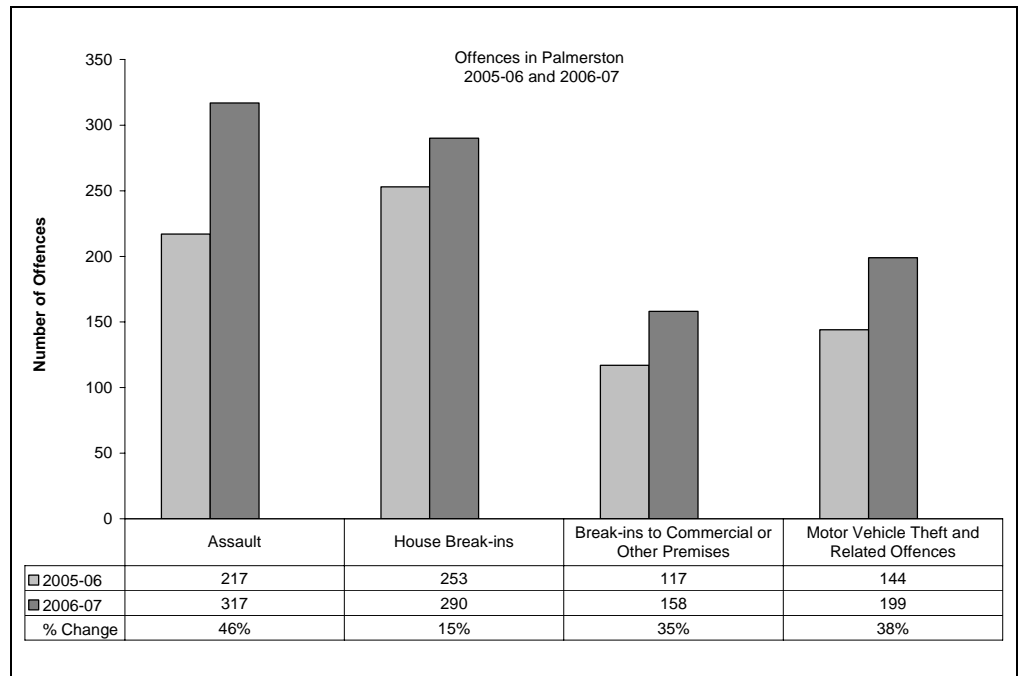
Largely as a result of its small population, statistics in the Northern Territory can be highly volatile with large swings from one period to the next.

Consequently recorded crime statistics are presented over an extended period to present the current period's data within the context of any longer term trends.

The underlying average smooths out volatility and identifies major changes in the level of crime.

TWELVE-MONTH COMPARISON

Twelve-month figures provide comparable information on how crime has tracked from one 12 month period to the next.



Assault

During 2006-07, a total of 317 *assault* offences were recorded, **46% (100) more** than the previous 12 months.

House Break-ins

During 2006-07, a total of 290 *house break-ins* were recorded, **15% (37) more** than the previous 12 months.

Break-ins to Commercial or Other Premises

During 2006-07, a total of 158 *break-ins to commercial or other premises* were recorded, **35% (41) more** than the previous 12 months.

Motor Vehicle Theft and Related Offences

During 2006-07, a total of 199 *motor vehicle theft and related offences* were recorded, **38% (55) more** than the previous 12 months.

* Source: The Northern Territory Quarterly Crime & Justice Statistics, Issue 20: June Quarter 2007



Recorded Crime June Quarter 2007

Palmerston – key findings*

Explanatory Notes

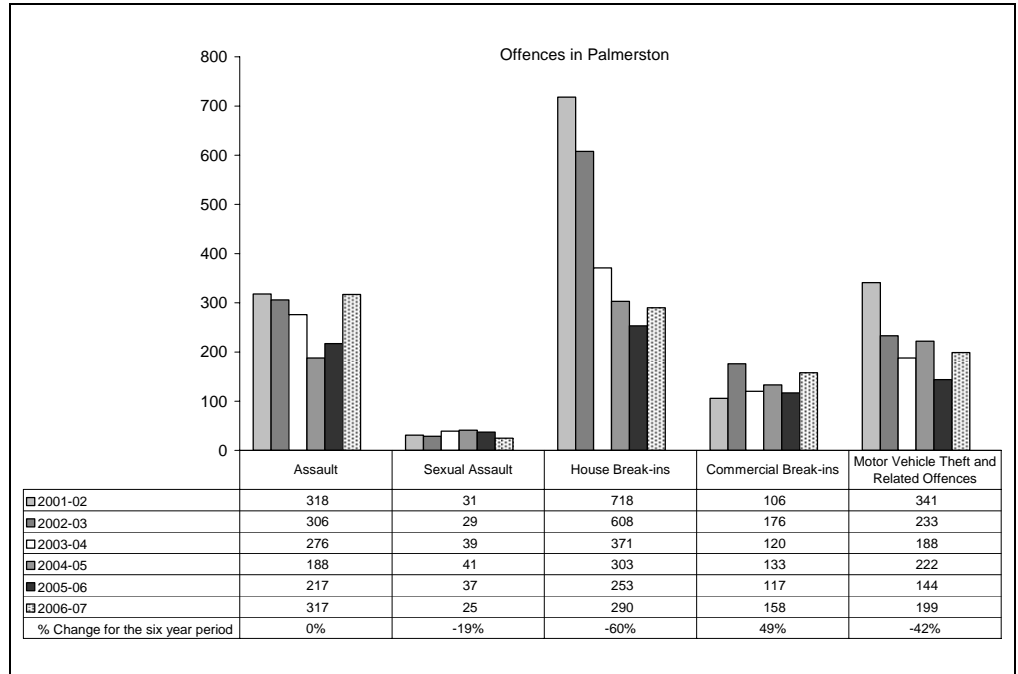
Largely as a result of its small population, statistics in the Northern Territory can be highly volatile with large swings from one period to the next.

Consequently recorded crime statistics are presented over an extended period to present the current period's data within the context of any longer term trends.

The underlying average smooths out volatility and identifies major changes in the level of crime.

SIX YEAR DATA

Data presented over a six year period provides information to see how recorded crimes have tracked in the longer run.



Assault

In late 2004, the Northern Territory Police launched their Violent Crime Reduction Strategy, with a consequential increase in the number of recorded Assault offences in 2005 and 2006.

These increases in Assaults largely reflect the impact of operational changes the Police have made in the reporting and recording of domestic violence related Assaults.

During 2006-07, there were 317 recorded Assault offences, **less than 1% (1) less** than in 2001-02.

Sexual Assault

During 2006-07, there were 25 recorded Sexual Assault offences, **19% (6) less** than in 2001-02.

House Break-ins

During 2006-07, there were 290 recorded House Break-in offences, **60% (429) less** than in 2001-02.

Commercial Break-ins

During 2006-07, there were 158 recorded Commercial Break-in offences, **49% (52) more** than in 2001-02.

Motor Vehicle Theft and Related Offences

During 2006-07, there were 199 recorded Motor Vehicle Theft and Related Offences, **42% (142) less** than in 2001-02.

* Source: The Northern Territory Recorded Crime data extract for June Quarter 2007.



Recorded Crime June Quarter 2007

Alice Springs – key findings*

Explanatory Notes

Largely as a result of its small population, statistics in the Northern Territory can be highly volatile with large swings from one period to the next.

Consequently recorded crime statistics are presented over an extended period to present the current period's data within the context of any longer term trends.

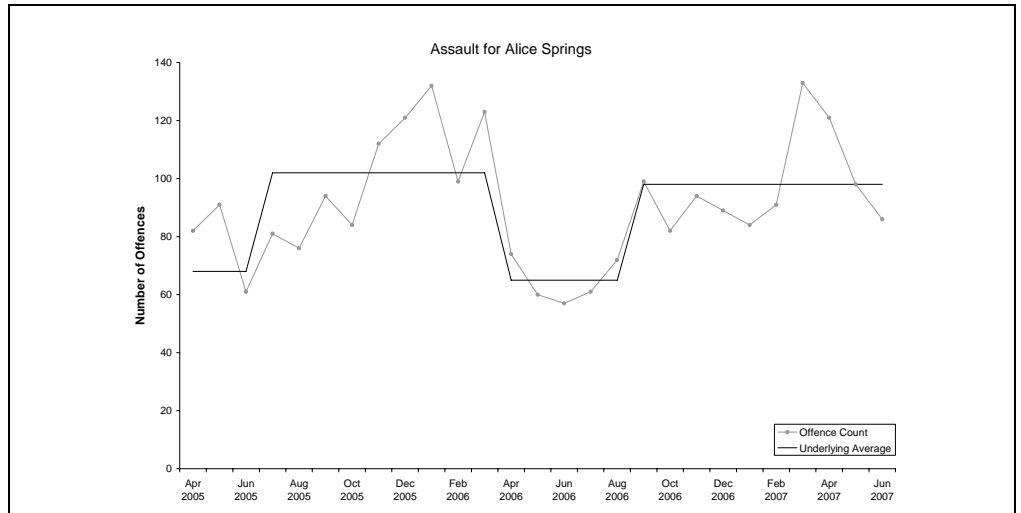
The underlying average smooths out volatility and identifies major changes in the level of crime.

ASSAULT

Underlying average – The underlying average level of recorded *assault* offences has ranged between 65 and 102 offences during the past nine quarters. Its current level of **98 per month** is at the higher end of the range.

Trend – Over the past 12 months no trend was identified.

Quarterly comparisons – There were 305 recorded *assault* offences in Alice Springs in the current quarter, a **decrease of 1% (3)** from the previous quarter, but an increase of 60% (114) from the same quarter the previous year.

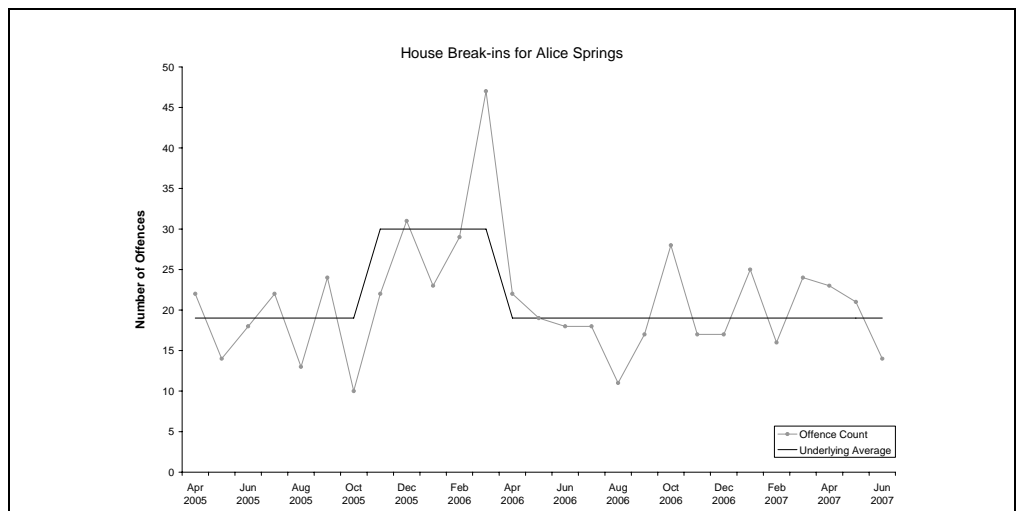


HOUSE BREAK-INS

Underlying average – The underlying average level of *house break-ins* has ranged between 19 and 30 offences per month during the past nine quarters. Its current level of **19 per month** is at the lower end of the range.

Trend – Over the past 12 months no trend was identified.

Quarterly comparisons – There were 58 *house break-ins* in the current quarter, a **decrease of 11% (7)** from the previous quarter and a decrease of 2% (1) from the same quarter the previous year.



* Source: The Northern Territory Quarterly Crime & Justice Statistics, Issue 20: June Quarter 2007



Recorded Crime June Quarter 2007

Alice Springs – key findings*

Explanatory Notes

Largely as a result of its small population, statistics in the Northern Territory can be highly volatile with large swings from one period to the next.

Consequently recorded crime statistics are presented over an extended period to present the current period's data within the context of any longer term trends.

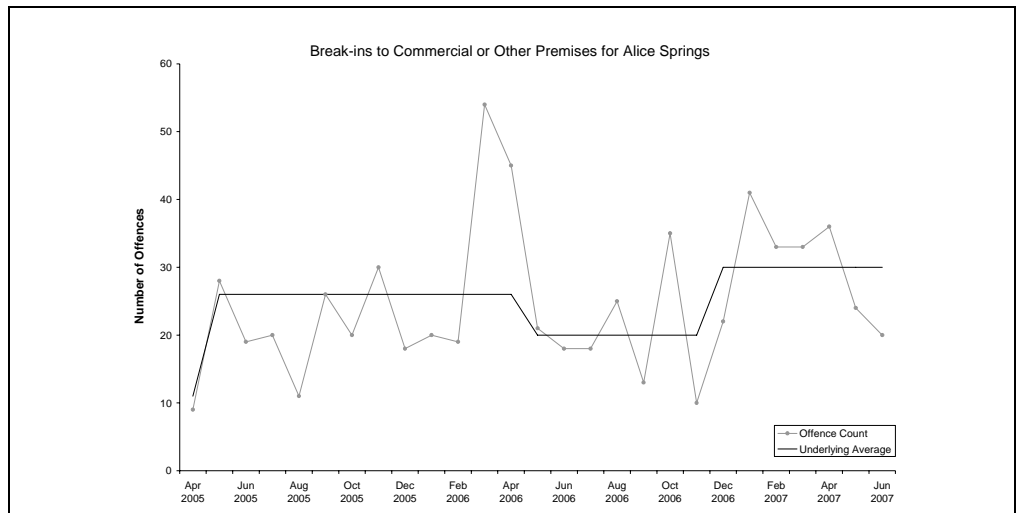
The underlying average smooths out volatility and identifies major changes in the level of crime.

BREAK-INS TO COMMERCIAL OR OTHER PREMISES

Underlying average – The underlying average level of *break-ins to commercial or other premises* has ranged between 11 and 30 offences per month during the past nine quarters. Its current level of **30 per month** is at the higher end of the range.

Trend – Over the past 12 months no trend was identified.

Quarterly comparisons – There were 80 *break-ins to commercial or other premises* in the current quarter, a **decrease of 25% (27)** from the previous quarter and a decrease of 5% (4) from the same quarter the previous year.

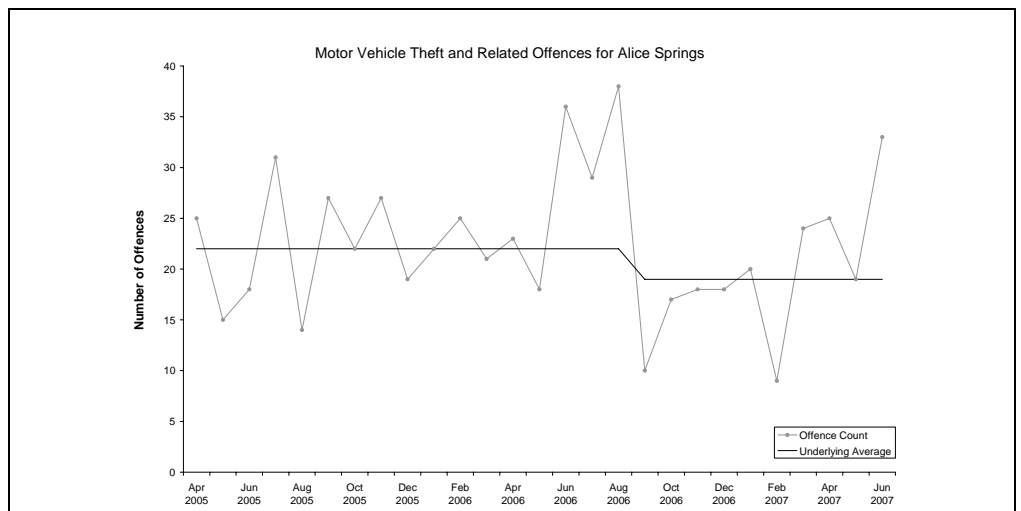


MOTOR VEHICLE THEFT AND RELATED OFFENCES

Underlying average – The underlying average level of recorded *motor vehicle theft and related offences* has ranged between 19 and 22 offences per month during the last nine quarters. Its current level of **19 per month** is at the lower end of the range.

Trend – Over the past 12 months no trend was identified.

Quarterly comparisons – There were 77 *motor vehicle theft and related offences* in the current quarter, an **increase of 45% (24)** from the previous quarter, but no change from the same quarter the previous year.



* Source: The Northern Territory Quarterly Crime & Justice Statistics, Issue 20: June Quarter 2007



Recorded Crime June Quarter 2007

Alice Springs – key findings*

Explanatory Notes

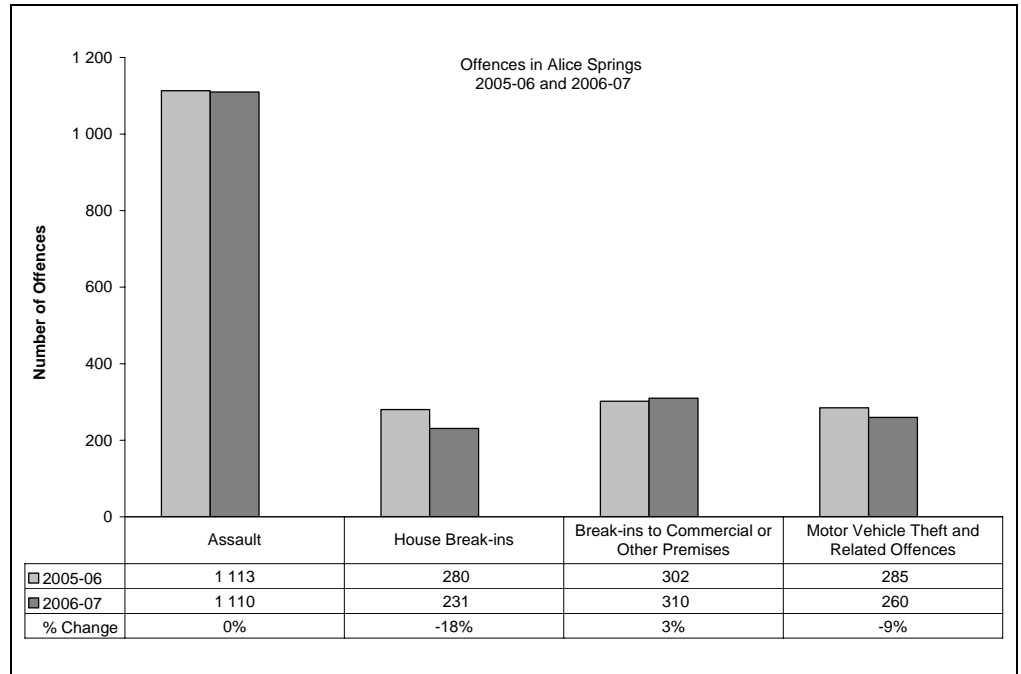
Largely as a result of its small population, statistics in the Northern Territory can be highly volatile with large swings from one period to the next.

Consequently recorded crime statistics are presented over an extended period to present the current period's data within the context of any longer term trends.

The underlying average smooths out volatility and identifies major changes in the level of crime.

TWELVE-MONTH COMPARISON

Twelve-month figures provide comparable information on how crime has tracked from one 12 month period to the next.



Assault

During 2006-07, a total of 1 110 *assault* offences were recorded, **less than 1% (3)** less than the previous 12 months.

House Break-ins

During 2006-07, a total of 231 *house break-ins* were recorded, **18% (49)** less than the previous 12 months.

Break-ins to Commercial or Other Premises

During 2006-07, a total of 310 *break-ins to commercial or other premises* were recorded, **3% (8)** more than the previous 12 months.

Motor Vehicle Theft and Related Offences

During 2006-07, a total of 260 *motor vehicle theft and related offences* were recorded, **9% (25)** less than the previous 12 months.

* Source: The Northern Territory Quarterly Crime & Justice Statistics, Issue 20: June Quarter 2007



Recorded Crime June Quarter 2007

Alice Springs – key findings*

Explanatory Notes

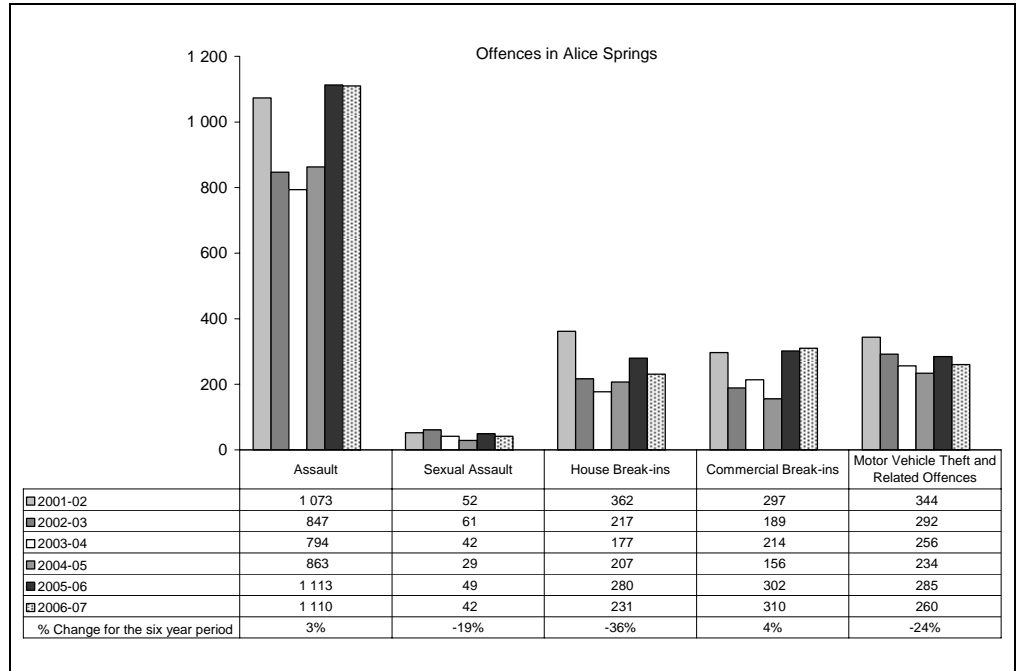
Largely as a result of its small population, statistics in the Northern Territory can be highly volatile with large swings from one period to the next.

Consequently recorded crime statistics are presented over an extended period to present the current period's data within the context of any longer term trends.

The underlying average smooths out volatility and identifies major changes in the level of crime.

SIX YEAR DATA

Data presented over a six year period provides information to see how recorded crimes have tracked in the longer run.



Assault

In late 2004, the Northern Territory Police launched their Violent Crime Reduction Strategy, with a consequential increase in the number of recorded Assault offences in 2005 and 2006.

These increases in Assaults largely reflect the impact of operational changes the Police have made in the reporting and recording of domestic violence related Assaults.

During 2006-07, there were 1 110 recorded Assault offences, **3% (37) more** than in 2001-02.

Sexual Assault

During 2006-07, there were 42 recorded Sexual Assault offences, **19% (10) less** than in 2001-02.

House Break-ins

During 2006-07, there were 231 recorded House Break-in offences, **36% (131) less** than in 2001-02.

Commercial Break-ins

During 2006-07, there were 310 recorded Commercial Break-in offences, **4% (13) more** than in 2001-02.

Motor Vehicle Theft and Related Offences

During 2006-07, there were 260 recorded Motor Vehicle Theft and Related Offences, **24% (84) less** than in 2001-02.

* Source: The Northern Territory Recorded Crime data extract for June Quarter 2007.



Katherine – key findings*

Explanatory Notes

Largely as a result of its small population, statistics in the Northern Territory can be highly volatile with large swings from one period to the next.

Consequently recorded crime statistics are presented over an extended period to present the current period's data within the context of any longer term trends.

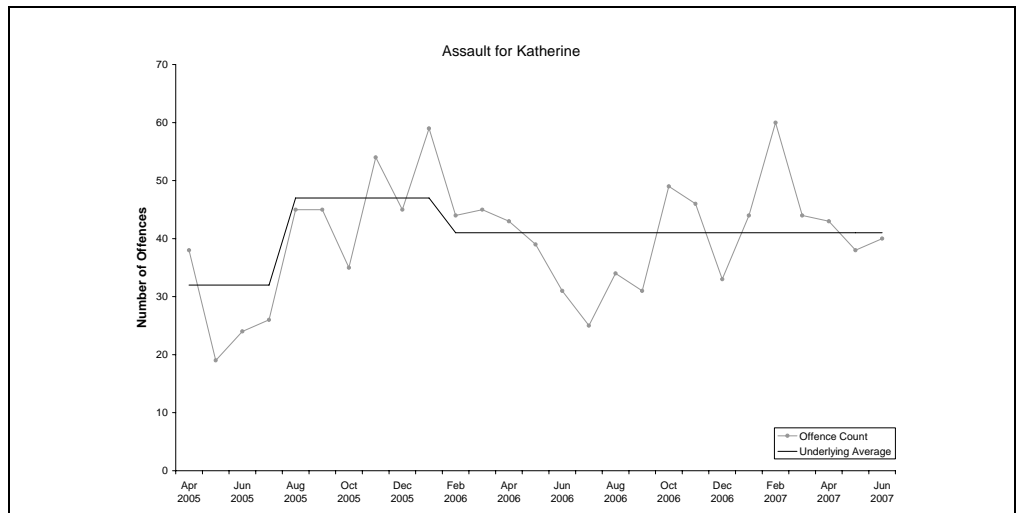
The underlying average smooths out volatility and identifies major changes in the level of crime.

ASSAULT

Underlying average – The underlying average level of recorded *assault* offences has ranged between 32 and 47 offences per month during the past nine quarters. Its current level of **41 per month** is in the middle of the range.

Trend – Over the past 12 months no trend was identified.

Quarterly comparisons – There were 121 recorded *assault* offences in Katherine in the current quarter, a **decrease of 18% (27)** from the previous quarter, but an increase of 7% (8) from the same quarter the previous year.

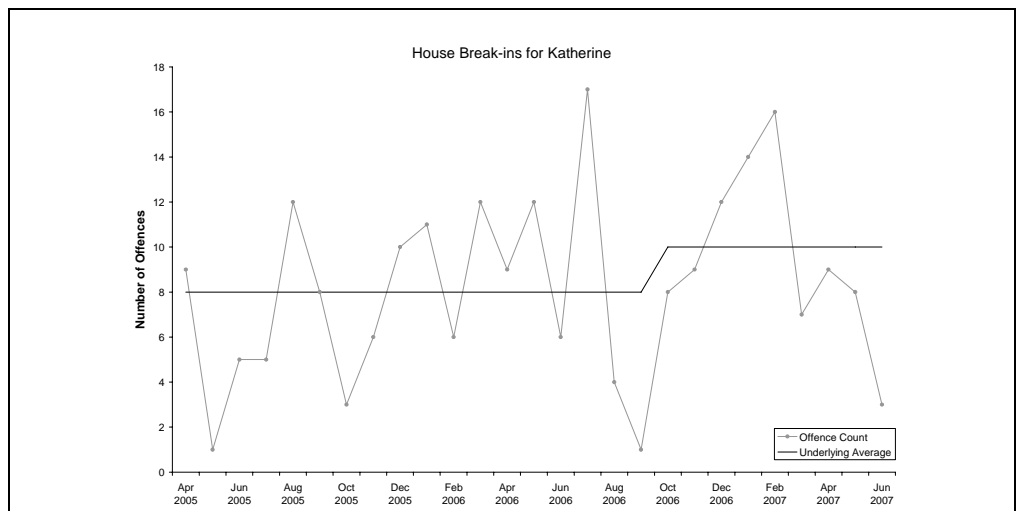


HOUSE BREAK-INS

Underlying average – The underlying average level of *house break-ins* has ranged between 8 and 10 offences per month during the past nine quarters. Its current level of **10 per month** is at the higher end of the range.

Trend – Over the past 12 months no trend was identified.

Quarterly comparisons – There were 20 *house break-ins* in the current quarter, a **decrease of 46% (17)** from the previous quarter and a decrease of 26% (7) from the same quarter the previous year.



* Source: The Northern Territory Quarterly Crime & Justice Statistics, Issue 20: June Quarter 2007



Recorded Crime June Quarter 2007

Katherine – key findings*

Explanatory Notes

Largely as a result of its small population, statistics in the Northern Territory can be highly volatile with large swings from one period to the next.

Consequently recorded crime statistics are presented over an extended period to present the current period's data within the context of any longer term trends.

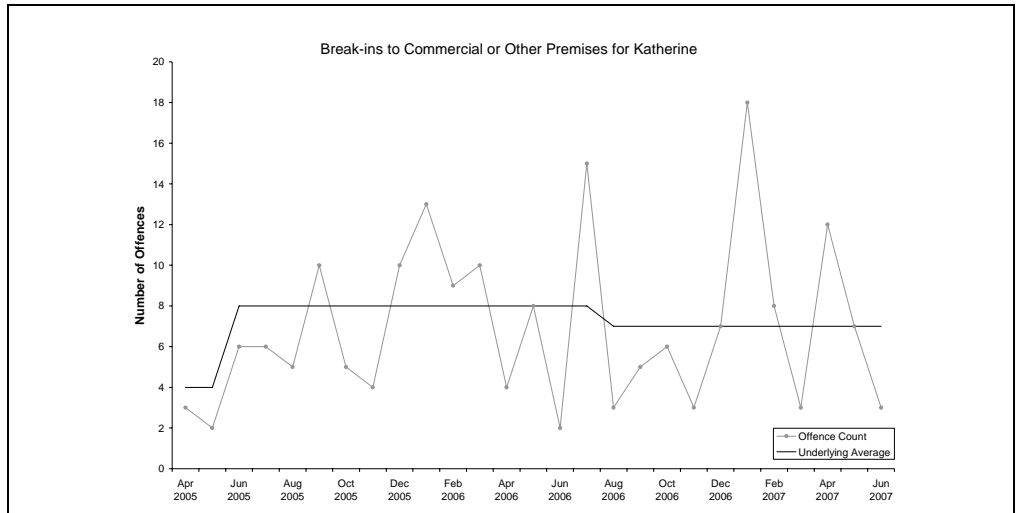
The underlying average smooths out volatility and identifies major changes in the level of crime.

BREAK-INS TO COMMERCIAL OR OTHER PREMISES

Underlying average – The underlying average level of *break-ins to commercial or other premises* has ranged between 4 and 8 offences per month during the past nine quarters. Its current level of **7 per month** is in the middle of the range.

Trend – Over the past 12 months no trend was identified.

Quarterly comparisons – There were 22 *break-ins to commercial or other premises* in the current quarter, a **decrease of 24% (7)** from the previous quarter, but an increase of 57% (8) from the same quarter the previous year.

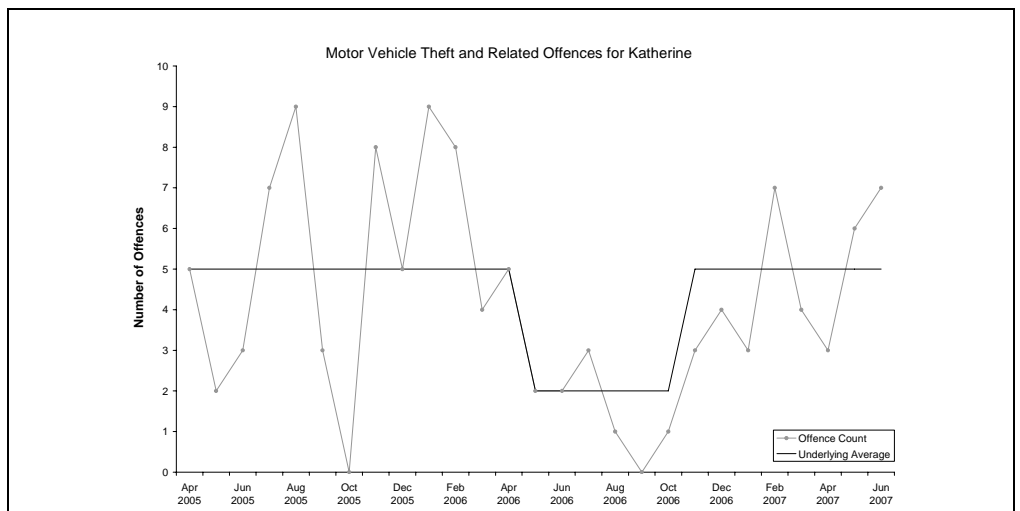


MOTOR VEHICLE THEFT AND RELATED OFFENCES

Underlying average – The underlying average level of recorded *motor vehicle theft and related offences* has ranged between 2 and 5 offences per month during the past nine quarters. Its current level of **5 per month** is at the higher end of the range.

Trend – Over the past 12 months an upward trend was identified.

Quarterly comparisons – There were 16 *motor vehicle theft and related offences* in the current quarter, an **increase of 14% (2)** from the previous quarter and an increase of 78% (7) from the same quarter the previous year.



* Source: The Northern Territory Quarterly Crime & Justice Statistics, Issue 20: June Quarter 2007

Recorded Crime June Quarter 2007

Katherine – key findings*

Explanatory Notes

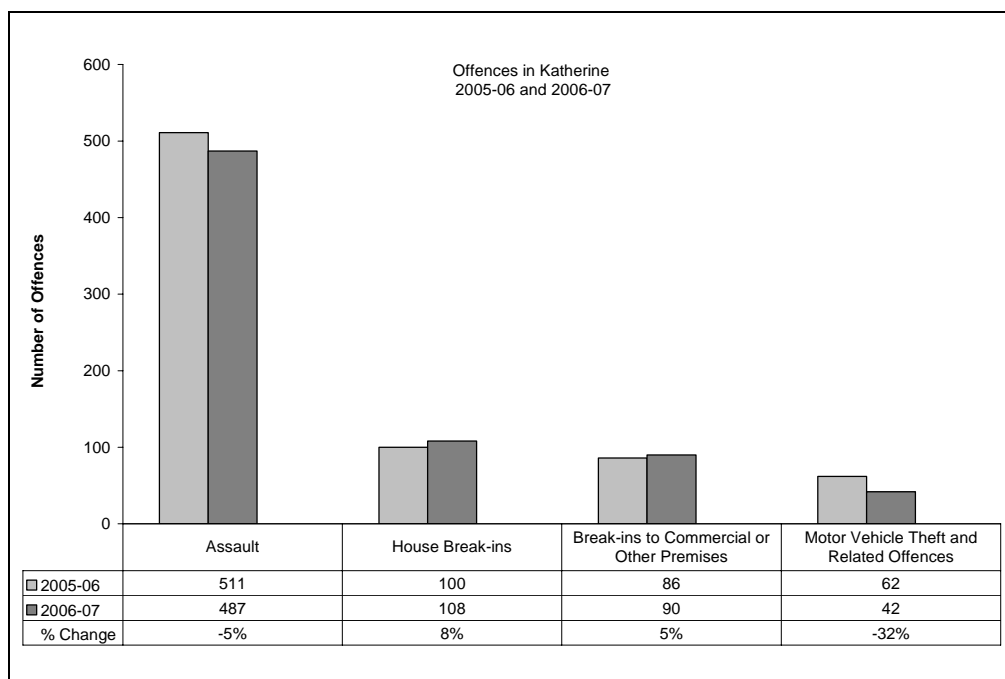
Largely as a result of its small population, statistics in the Northern Territory can be highly volatile with large swings from one period to the next.

Consequently recorded crime statistics are presented over an extended period to present the current period's data within the context of any longer term trends.

The underlying average smooths out volatility and identifies major changes in the level of crime.

TWELVE-MONTH COMPARISON

Twelve-month figures provide comparable information on how crime has tracked from one 12 month period to the next.



Assault

During 2006-07, a total of 487 *assault* offences were recorded, **5% (24) less** than the previous 12 months.

House Break-ins

During 2006-07, a total of 108 *house break-ins* were recorded, **8% (8) more** than the previous 12 months.

Break-ins to Commercial or Other Premises

During 2006-07, a total of 90 *break-ins to commercial or other premises* were recorded, **5% (4) more** than the previous 12 months.

Motor Vehicle Theft and Related Offences

During 2006-07, a total of 42 *motor vehicle theft and related offences* were recorded, **32% (20) less** from the previous 12 months.

* Source: The Northern Territory Quarterly Crime & Justice Statistics, Issue 20: June Quarter 2007



Katherine – key findings*

Explanatory Notes

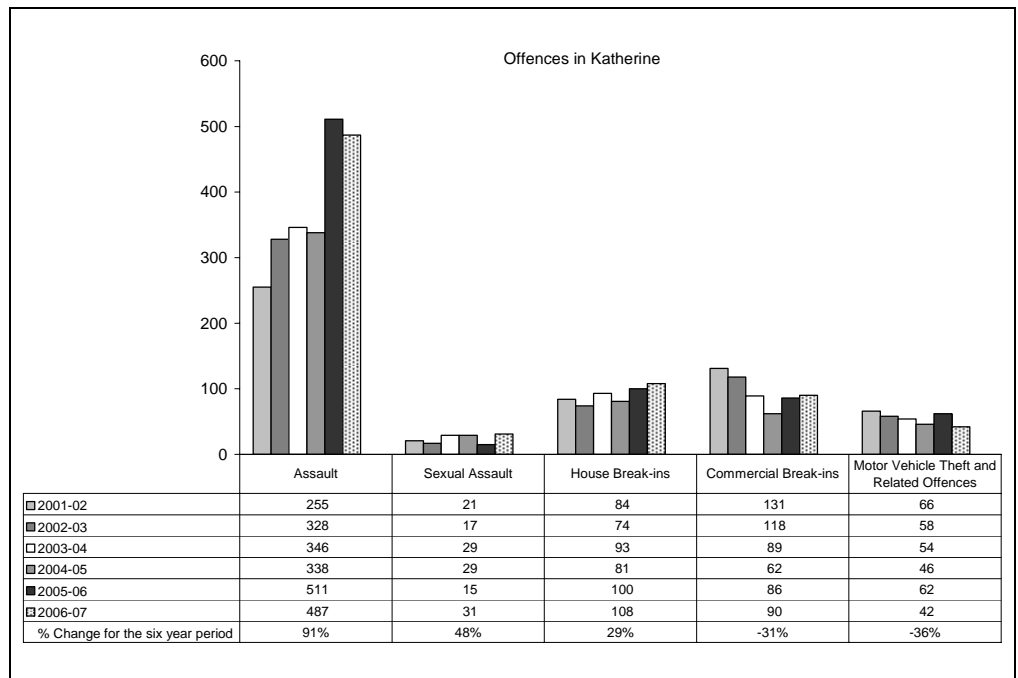
Largely as a result of its small population, statistics in the Northern Territory can be highly volatile with large swings from one period to the next.

Consequently recorded crime statistics are presented over an extended period to present the current period's data within the context of any longer term trends.

The underlying average smooths out volatility and identifies major changes in the level of crime.

SIX YEAR DATA

Data presented over a six year period provides information to see how recorded crimes have tracked in the longer run.



Assault

In late 2004, the Northern Territory Police launched their Violent Crime Reduction Strategy, with a consequential increase in the number of recorded Assault offences in 2005 and 2006.

These increases in Assaults largely reflect the impact of operational changes the Police have made in the reporting and recording of domestic violence related Assaults.

During 2006-07, there were 487 recorded Assault offences, **91% (232) more** than in 2001-02.

Sexual Assault

During 2006-07, there were 31 recorded Sexual Assault offences, **48% (10) more** than in 2001-02.

House Break-ins

During 2006-07, there were 108 recorded House Break-in offences, **29% (24) more** than in 2001-02.

Commercial Break-ins

During 2006-07, there were 90 recorded Commercial Break-in offences, **31% (41) less** than in 2001-02.

Motor Vehicle Theft and Related Offences

During 2006-07, there were 42 recorded Motor Vehicle Theft and Related Offences, **36% (24) less** than in 2001-02.

* Source: The Northern Territory Recorded Crime data extract for June Quarter 2007.



Recorded Crime June Quarter 2007

Tennant Creek – key findings*

Explanatory Notes

Largely as a result of its small population, statistics in the Northern Territory can be highly volatile with large swings from one period to the next.

Consequently recorded crime statistics are presented over an extended period to present the current period's data within the context of any longer term trends.

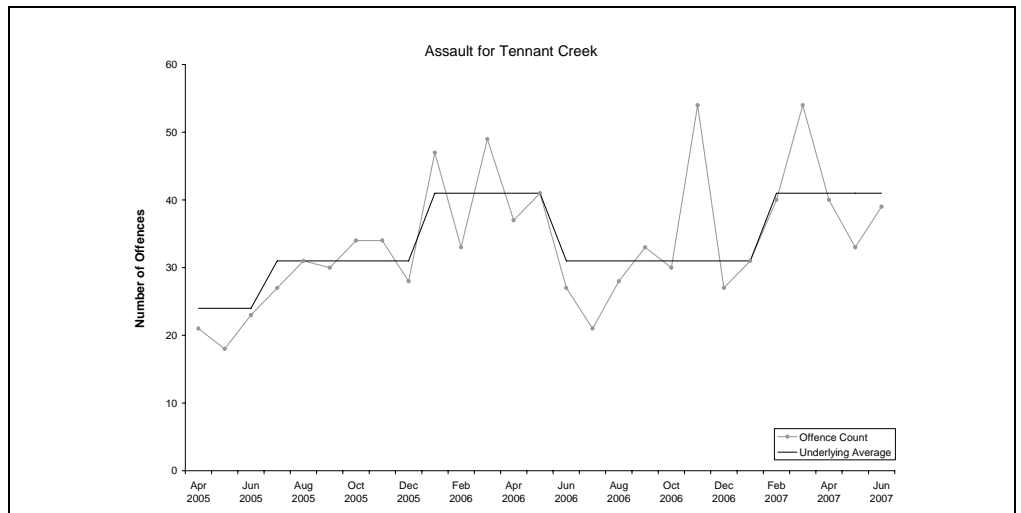
The underlying average smooths out volatility and identifies major changes in the level of crime.

ASSAULT

Underlying average – The underlying average level of recorded *assault* offences has ranged between 24 and 41 offences per month during the past nine quarters. Its current level of **41 per month** is at the higher end of the range.

Trend – Over the past 12 months no trend was identified.

Quarterly comparisons – There were 112 recorded *assault* offences in Tennant Creek in the current quarter, a **decrease of 10% (13)** from the previous quarter, but an increase of 7% (7) from the same quarter the previous year.

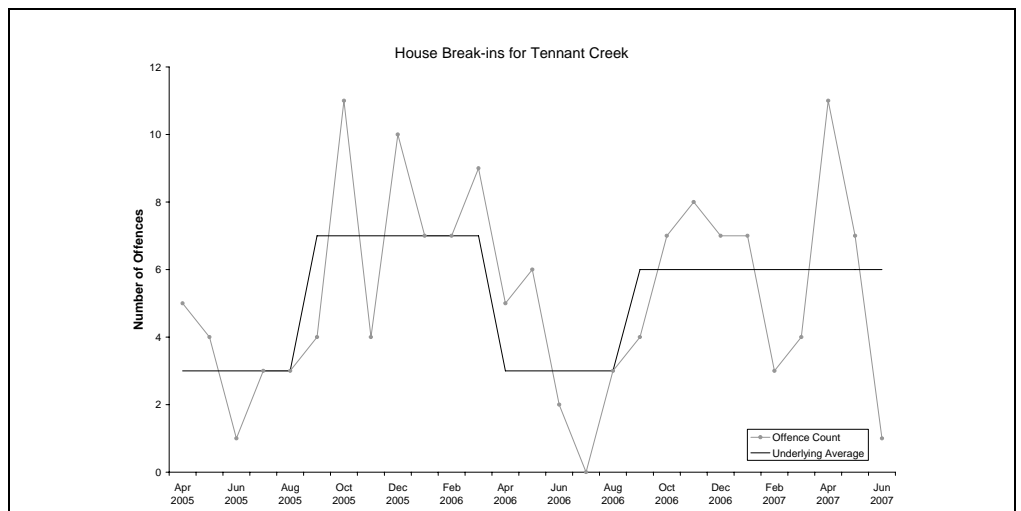


HOUSE BREAK-INS

Underlying average – The underlying average level of *house break-ins* has ranged between 3 and 7 offences per month during the past nine quarters. Its current level of **6 per month** is in the middle of the range.

Trend – Over the past 12 months no trend was identified.

Quarterly comparisons – There were 19 *house break-ins* in the current quarter, an **increase of 36% (5)** from the previous quarter and an increase of 46% (6) from the same quarter the previous year.



* Source: The Northern Territory Quarterly Crime & Justice Statistics, Issue 20: June Quarter 2007



Recorded Crime June Quarter 2007

Tennant Creek – key findings*

Explanatory Notes

Largely as a result of its small population, statistics in the Northern Territory can be highly volatile with large swings from one period to the next.

Consequently recorded crime statistics are presented over an extended period to present the current period's data within the context of any longer term trends.

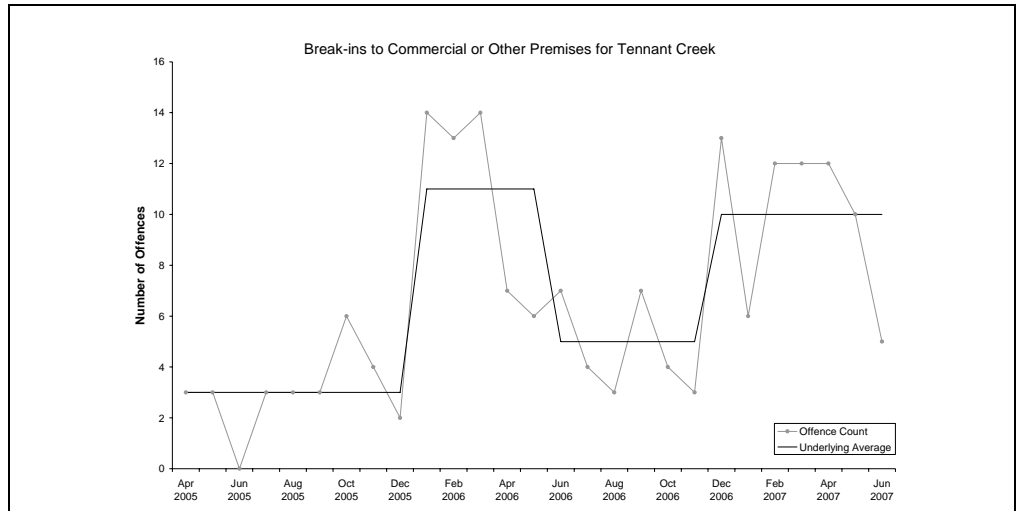
The underlying average smooths out volatility and identifies major changes in the level of crime.

BREAK-INS TO COMMERCIAL OR OTHER PREMISES

Underlying average – The underlying average level of *break-ins to commercial or other premises* has ranged between 3 and 11 offences per month during the past nine quarters. Its current level of **10 per month** is at the higher end of the range.

Trend – Over the past 12 months no trend was identified.

Quarterly comparisons – There were 27 *break-ins to commercial or other premises* in the current quarter, a **decrease of 10% (3)** from the previous quarter, but an increase of 35% (7) from the same quarter the previous year.



* Source: The Northern Territory Quarterly Crime & Justice Statistics, Issue 20: June Quarter 2007



Recorded Crime June Quarter 2007

Tennant Creek – key findings*

Explanatory Notes

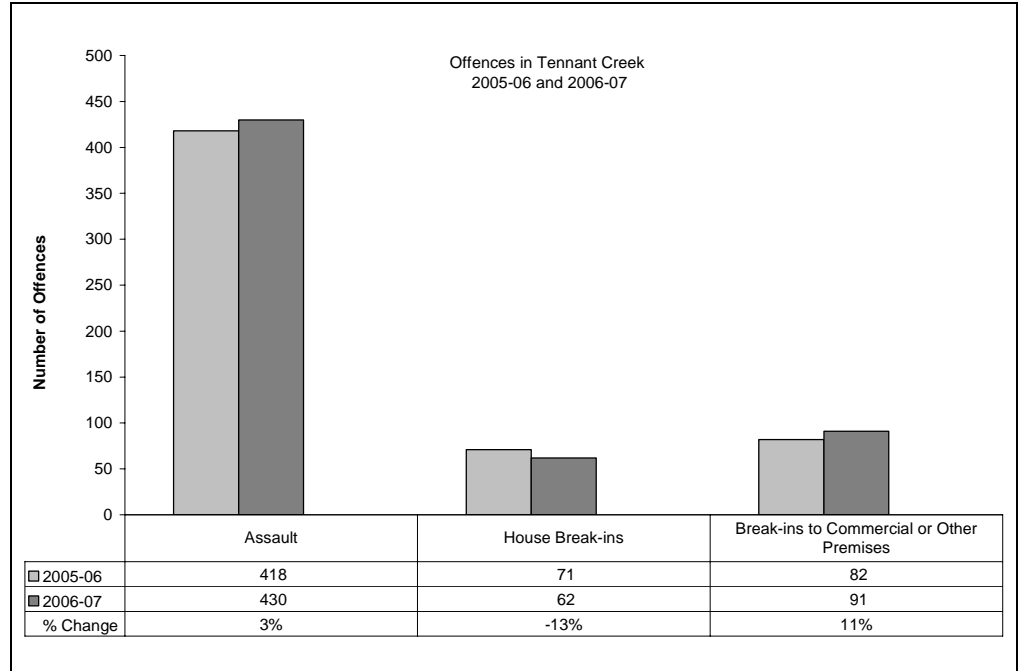
Largely as a result of its small population, statistics in the Northern Territory can be highly volatile with large swings from one period to the next.

Consequently recorded crime statistics are presented over an extended period to present the current period's data within the context of any longer term trends.

The underlying average smooths out volatility and identifies major changes in the level of crime.

TWELVE-MONTH COMPARISON

Twelve-month figures provide comparable information on how crime has tracked from one 12 month period to the next.



Assault

During 2006-07, a total of 430 *assault* offences were recorded, **3% (12) more** than the previous 12 months.

House Break-ins

During 2006-07, a total of 62 *house break-ins* were recorded, **13% (9) less** than the previous 12 months.

Break-ins to Commercial or Other Premises

During 2006-07, a total of 91 *break-ins to commercial or other premises* were recorded, **11% (9) more** than the previous 12 months.

* Source: The Northern Territory Quarterly Crime & Justice Statistics, Issue 20: June Quarter 2007



Recorded Crime June Quarter 2007

Tennant Creek – key findings*

Explanatory Notes

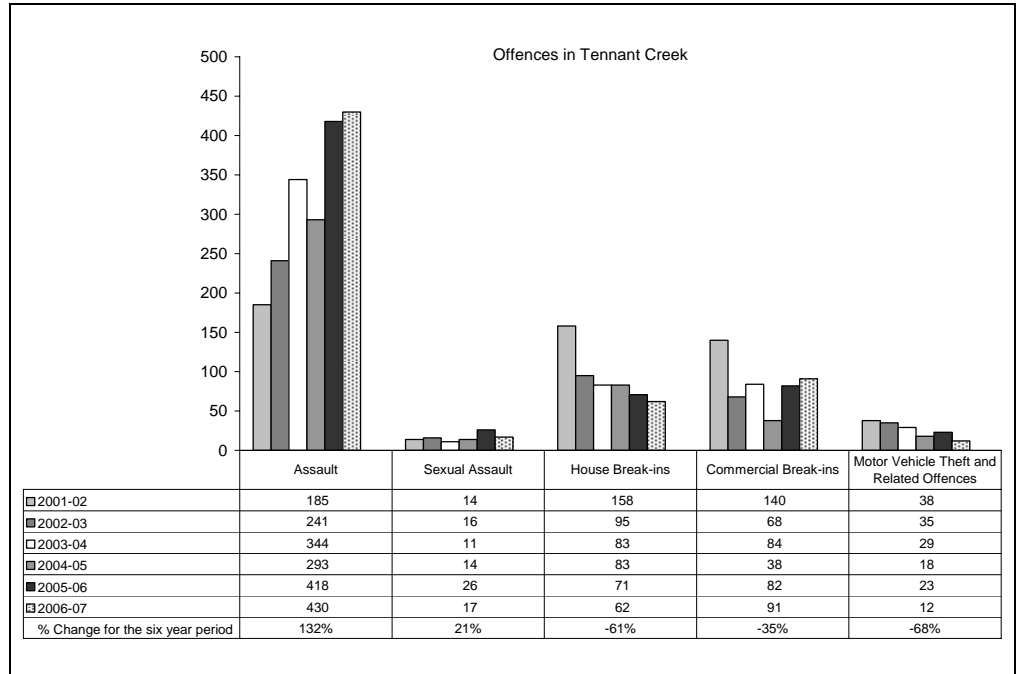
Largely as a result of its small population, statistics in the Northern Territory can be highly volatile with large swings from one period to the next.

Consequently recorded crime statistics are presented over an extended period to present the current period's data within the context of any longer term trends.

The underlying average smooths out volatility and identifies major changes in the level of crime.

SIX YEAR DATA

Data presented over a six year period provides information to see how recorded crimes have tracked in the longer run.



Assault

In late 2004, the Northern Territory Police launched their Violent Crime Reduction Strategy, with a consequential increase in the number of recorded Assault offences in 2005 and 2006.

These increases in Assaults largely reflect the impact of operational changes the Police have made in the reporting and recording of domestic violence related Assaults.

During 2006-07, there were 430 recorded Assault offences, **132% (245) more** than in 2001-02.

Sexual Assault

During 2006-07, there were 17 recorded Sexual Assault offences, **21% (3) more** than in 2001-02.

House Break-ins

During 2006-07, there were 62 recorded House Break-in offences, **61% (96) less** than in 2001-02.

Commercial Break-ins

During 2006-07, there were 91 recorded Commercial Break-in offences, **35% (49) less** than in 2001-02.

Motor Vehicle Theft and Related Offences

During 2006-07, there were 12 recorded Motor Vehicle Theft and Related Offences, **68% (26) less** than in 2001-02.

* Source: The Northern Territory Recorded Crime data extract for June Quarter 2007.



Nhulunbuy – key findings*

Explanatory Notes

Largely as a result of its small population, statistics in the Northern Territory can be highly volatile with large swings from one period to the next.

Consequently recorded crime statistics are presented over an extended period to present the current period's data within the context of any longer term trends.

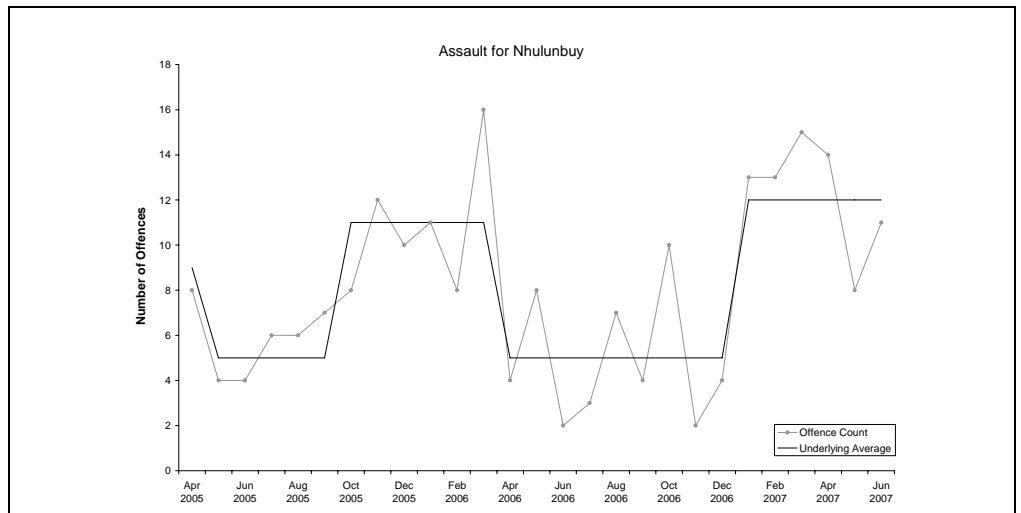
The underlying average smooths out volatility and identifies major changes in the level of crime.

ASSAULT

Underlying average – The underlying average level of recorded *assault* offences has ranged between 5 and 12 offences per month during the past nine quarters. Its current level of **12 per month** is at the higher end of the range.

Trend – Over the past 12 months an upward trend was identified.

Quarterly comparisons – There were 33 recorded *assault* offences in Nhulunbuy in the current quarter, a **decrease of 20% (8)** from the previous quarter, but an increase of 136% (19) from the same quarter the previous year.

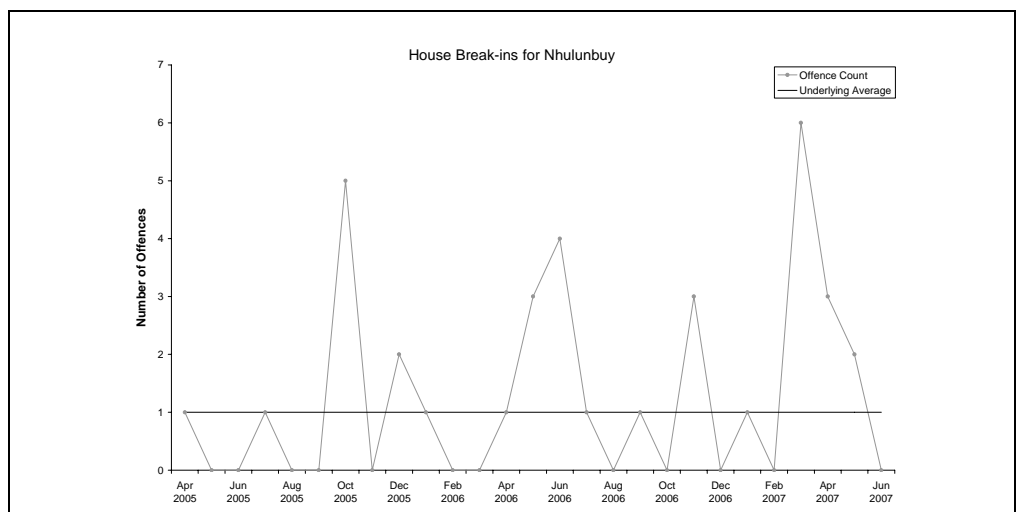


HOUSE BREAK-INS

Underlying average – The underlying average level of *house break-ins* has remained stable at **1 offence per month** during the past nine quarters.

Trend – Over the past 12 months no trend was identified.

Quarterly comparisons – There were 5 *house break-ins* in the current quarter, a **decrease of 2** from the previous quarter and a decrease of 3 from the same quarter the previous year.



* Source: The Northern Territory Quarterly Crime & Justice Statistics, Issue 20: June Quarter 2007

Recorded Crime June Quarter 2007

Nhulunbuy – key findings*

Explanatory Notes

Largely as a result of its small population, statistics in the Northern Territory can be highly volatile with large swings from one period to the next.

Consequently recorded crime statistics are presented over an extended period to present the current period's data within the context of any longer term trends.

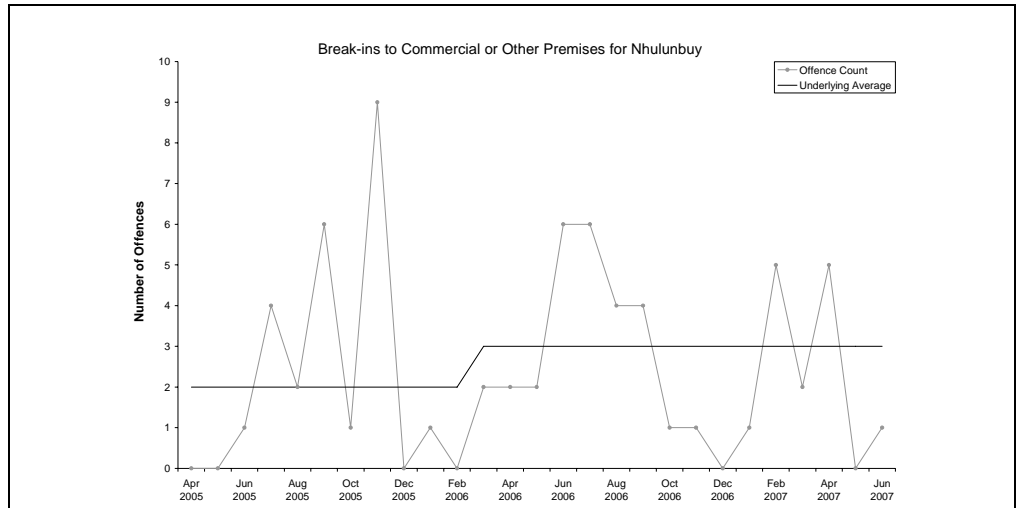
The underlying average smooths out volatility and identifies major changes in the level of crime.

BREAK-INS TO COMMERCIAL OR OTHER PREMISES

Underlying average – The underlying average level of *break-ins to commercial or other premises* has ranged between 2 and 3 offences per month during the past nine quarters. Its current level of **3 per month** is at the higher end of the range.

Trend – Over the past 12 months no trend was identified.

Quarterly comparisons – There were 6 *break-ins to commercial or other premises* in the current quarter, a **decrease of 2** from the previous quarter and a decrease of 4 from the same quarter the previous year.



* Source: The Northern Territory Quarterly Crime & Justice Statistics, Issue 20: June Quarter 2007



Recorded Crime June Quarter 2007

Nhulunbuy – key findings*

Explanatory Notes

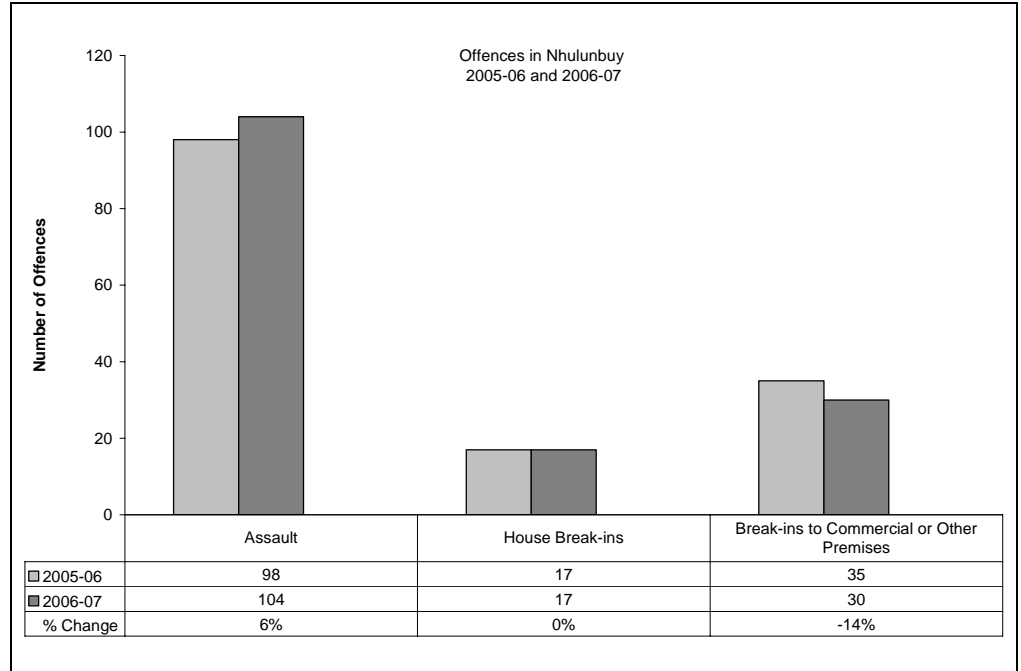
Largely as a result of its small population, statistics in the Northern Territory can be highly volatile with large swings from one period to the next.

Consequently recorded crime statistics are presented over an extended period to present the current period's data within the context of any longer term trends.

The underlying average smooths out volatility and identifies major changes in the level of crime.

TWELVE-MONTH COMPARISON

Twelve-month figures provide comparable information on how crime has tracked from one 12 month period to the next.



Assault

During 2006-07, a total of 104 *assault* offences were recorded, **6% (6) more** than the previous 12 months.

House Break-ins

During 2006-07, a total of 17 *house break-ins* were recorded, **no change** from the previous 12 months.

Break-ins to Commercial or Other Premises

During 2006-07, a total of 30 *break-ins to commercial or other premises* were recorded, **14% (5) less** than the previous 12 months.

* Source: The Northern Territory Quarterly Crime & Justice Statistics, Issue 20: June Quarter 2007



Recorded Crime June Quarter 2007

Nhulunbuy – key findings*

Explanatory Notes

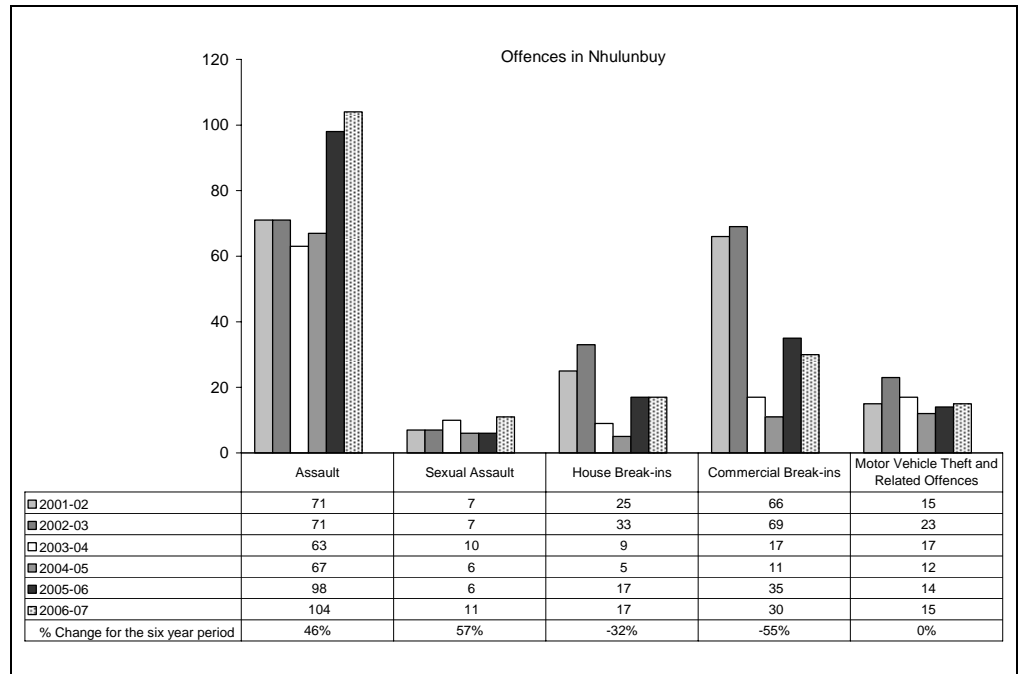
Largely as a result of its small population, statistics in the Northern Territory can be highly volatile with large swings from one period to the next.

Consequently recorded crime statistics are presented over an extended period to present the current period's data within the context of any longer term trends.

The underlying average smooths out volatility and identifies major changes in the level of crime.

SIX YEAR DATA

Data presented over a six year period provides information to see how recorded crimes have tracked in the longer run.



Assault

In late 2004, the Northern Territory Police launched their Violent Crime Reduction Strategy, with a consequential increase in the number of recorded Assault offences in 2005 and 2006.

These increases in Assaults largely reflect the impact of operational changes the Police have made in the reporting and recording of domestic violence related Assaults.

During 2006-07, there were 104 recorded Assault offences, **46% (33) more** than in 2001-02.

Sexual Assault

During 2006-07, there were 11 recorded Sexual Assault offences, **57% (4) more** than in 2001-02.

House Break-ins

During 2006-07, there were 17 recorded House Break-in offences, **32% (8) less** than in 2001-02.

Commercial Break-ins

During 2006-07, there were 30 recorded Commercial Break-in offences, **55% (36) less** than in 2001-02.

Motor Vehicle Theft and Related Offences

During 2006-07, there were 15 recorded Motor Vehicle Theft and Related Offences, **no change** from 2001-02.

* Source: The Northern Territory Recorded Crime data extract for June Quarter 2007.

Explanatory Notes

Largely as a result of its small population, statistics in the Northern Territory can be highly volatile with large swings from one period to the next.

Consequently recorded crime statistics are presented over an extended period to present the current period's data within the context of any longer term trends.

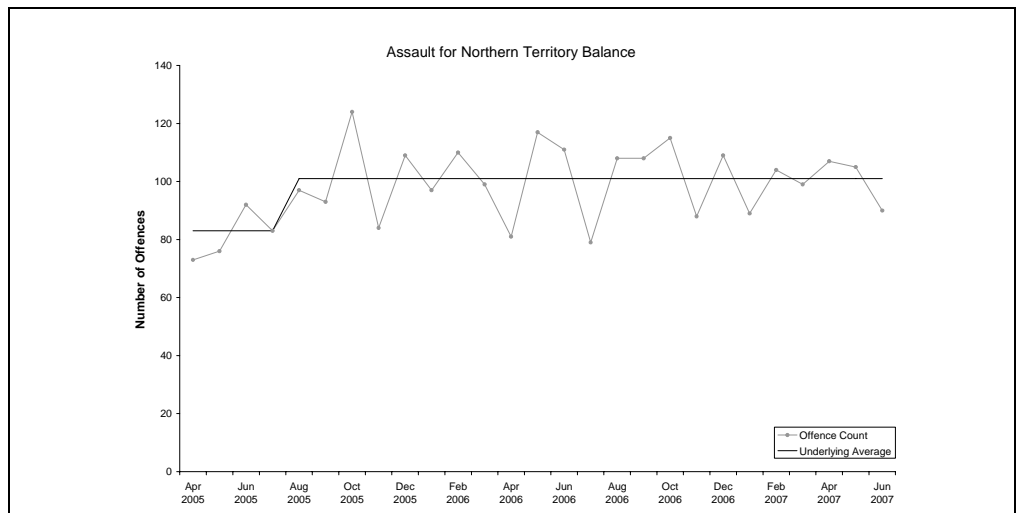
The underlying average smooths out volatility and identifies major changes in the level of crime.

ASSAULT

Underlying average – The underlying average level of recorded *assault* offences has ranged between 83 and 101 offences per month during the past nine quarters. Its current level of **101 per month** is at the higher end of the range.

Trend – Over the past 12 months no trend was identified.

Quarterly comparisons – There were 302 recorded *assault* offences in the Northern Territory Balance in the current quarter, an **increase of 3% (10)** from the previous quarter, but a decrease of 2% (7) from the same quarter the previous year.

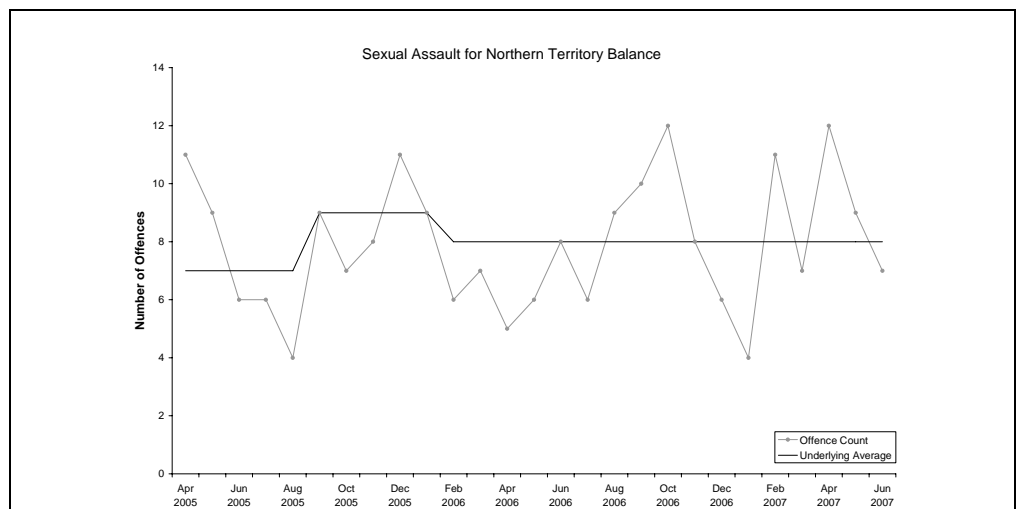


SEXUAL ASSAULT

Underlying average – The underlying average level of recorded *sexual assault* offences has ranged between 7 and 9 offences per month during the past nine quarters. Its current level of **8 per month** is in the middle of the range.

Trend – Over the past 12 months no trend was identified.

Quarterly comparisons – There were 28 recorded *sexual assault* offences in the Northern Territory Balance in the current quarter, an **increase of 27% (6)** from the previous quarter and an increase of 47% (9) from the same quarter the previous year.



* Source: The Northern Territory Quarterly Crime & Justice Statistics, Issue 20: June Quarter 2007



Recorded Crime June Quarter 2007

Northern Territory Balance – key findings*

Explanatory Notes

Largely as a result of its small population, statistics in the Northern Territory can be highly volatile with large swings from one period to the next.

Consequently recorded crime statistics are presented over an extended period to present the current period's data within the context of any longer term trends.

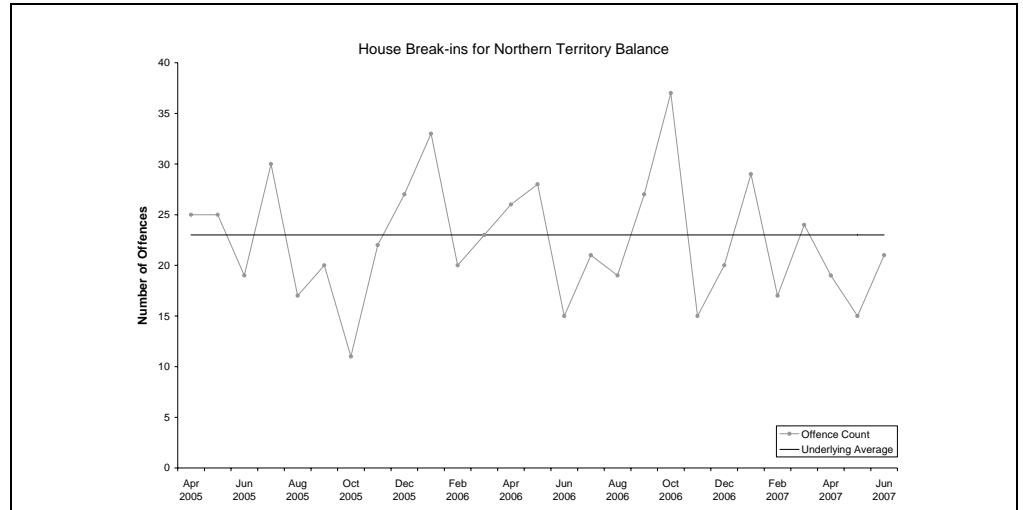
The underlying average smooths out volatility and identifies major changes in the level of crime.

HOUSE BREAK-INS

Underlying average – The underlying average level of *house break-ins* has remained stable at **23 offences per month** during the past nine quarters.

Trend – Over the past 12 months no trend was identified.

Quarterly comparisons – There were 55 *house break-ins* in the current quarter, a **decrease of 21% (15)** from the previous quarter and a decrease of 20% (14) from the same quarter the previous year.

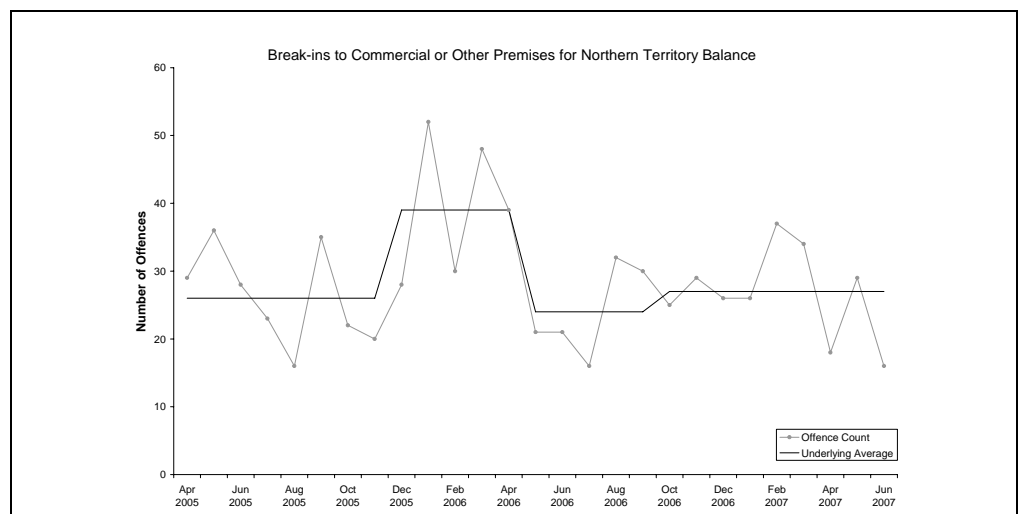


BREAK-INS TO COMMERCIAL OR OTHER PREMISES

Underlying average – The underlying average level of *break-ins to commercial or other premises* has ranged between 24 and 39 offences per month during the past nine quarters. Its current level of **27 per month** is at the lower end of the range.

Trend – Over the past 12 months no trend was identified.

Quarterly comparisons – There were 63 *break-ins to commercial or other premises* in the current quarter, a **decrease of 35% (34)** from the previous quarter and a decrease of 22% (18) from the same quarter the previous year.



* Source: The Northern Territory Quarterly Crime & Justice Statistics, Issue 20: June Quarter 2007



Recorded Crime June Quarter 2007

Northern Territory Balance – key findings*

Explanatory Notes

Largely as a result of its small population, statistics in the Northern Territory can be highly volatile with large swings from one period to the next.

Consequently recorded crime statistics are presented over an extended period to present the current period's data within the context of any longer term trends.

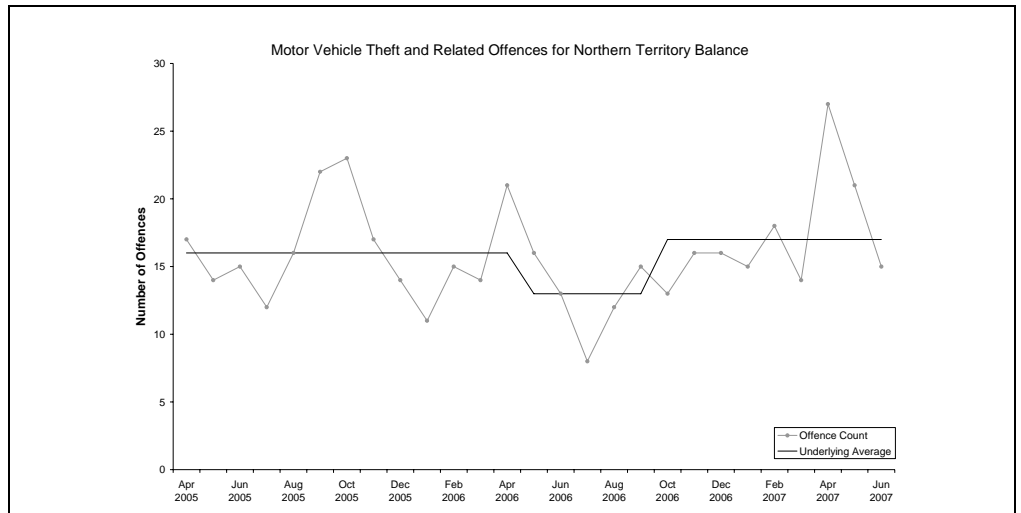
The underlying average smooths out volatility and identifies major changes in the level of crime.

MOTOR VEHICLE THEFT AND RELATED OFFENCES

Underlying average – The underlying average level of recorded *motor vehicle theft and related offences* has ranged between 13 and 17 offences per month during the past nine quarters. Its current level of **17 per month** is at the higher end of the range.

Trend – Over the past 12 months an upward trend was identified.

Quarterly comparisons – There were 63 *motor vehicle theft and related offences* in the current quarter, an **increase of 34% (16)** from the previous quarter and an increase of 26% (13) from the same quarter the previous year.



* Source: The Northern Territory Quarterly Crime & Justice Statistics, Issue 20: June Quarter 2007



Explanatory Notes

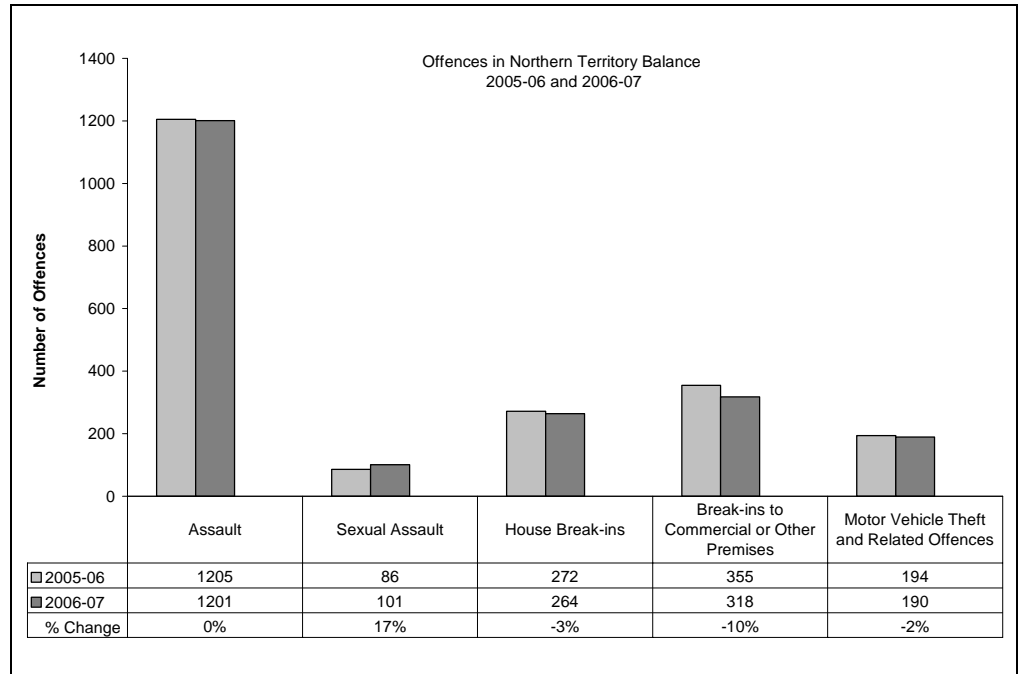
Largely as a result of its small population, statistics in the Northern Territory can be highly volatile with large swings from one period to the next.

Consequently recorded crime statistics are presented over an extended period to present the current period's data within the context of any longer term trends.

The underlying average smooths out volatility and identifies major changes in the level of crime.

TWELVE-MONTH COMPARISON

Twelve-month figures provide comparable information on how crime has tracked from one 12 month period to the next.



Assault

During 2006-07, a total of 1 201 *assault* offences were recorded, **less than 1% (4) less** than the previous 12 months.

Sexual Assault

During 2006-07, a total of 101 *sexual assault* offences were recorded, **17% (15) more** than the previous 12 months.

House Break-ins

During 2006-07, a total of 264 *house break-ins* were recorded, **3% (8) less** than the previous 12 months.

Break-ins to Commercial or Other Premises

During 2006-07, a total of 318 *break-ins to commercial or other premises* were recorded, **10% (37) less** than the previous 12 months.

Motor Vehicle Theft and Related Offences

During 2006-07, a total of 190 *motor vehicle theft and related offences* were recorded, **2% (4) less** than the previous 12 months.

* Source: The Northern Territory Quarterly Crime & Justice Statistics, Issue 20: June Quarter 2007



Explanatory Notes

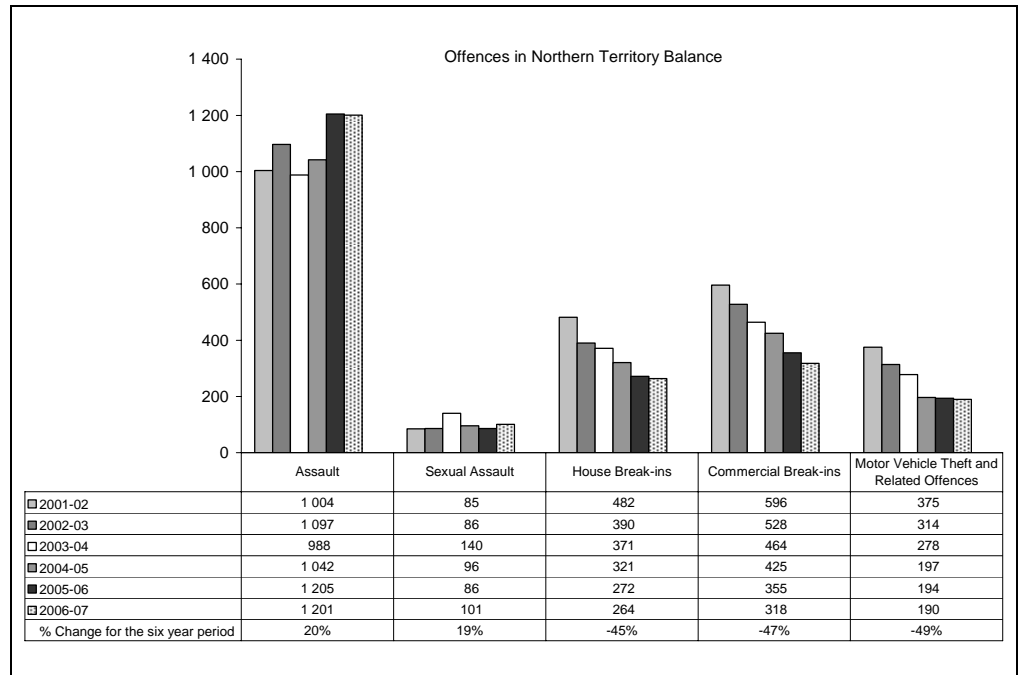
Largely as a result of its small population, statistics in the Northern Territory can be highly volatile with large swings from one period to the next.

Consequently recorded crime statistics are presented over an extended period to present the current period's data within the context of any longer term trends.

The underlying average smooths out volatility and identifies major changes in the level of crime.

SIX YEAR DATA

Data presented over a six year period provides information to see how recorded crimes have tracked in the longer run.



Assault

In late 2004, the Northern Territory Police launched their Violent Crime Reduction Strategy, with a consequential increase in the number of recorded Assault offences in 2005 and 2006.

These increases in Assaults largely reflect the impact of operational changes the Police have made in the reporting and recording of domestic violence related Assaults.

During 2006-07, there were 1 201 recorded Assault offences, **20% (197) more** than in 2001-02.

Sexual Assault

During 2006-07, there were 101 recorded Sexual Assault offences, **19% (16) more** than in 2001-02.

House Break-ins

During 2006-07, there were 264 recorded House Break-in offences, **45% (218) less** than in 2001-02.

Commercial Break-ins

During 2006-07, there were 318 recorded Commercial Break-in offences, **47% (278) less** than in 2001-02.

Motor Vehicle Theft and Related Offences

During 2006-07, there were 190 recorded Motor Vehicle Theft and Related Offences, **49% (185) less** than in 2001-02.

* Source: The Northern Territory Recorded Crime data extract for June Quarter 2007.