

### Explanatory Notes

*Largely as a result of its small population, statistics in the Northern Territory can be highly volatile with large swings from one period to the next.*

*Consequently recorded crime statistics are presented over an extended period to present the current period's data within the context of any longer term trends.*

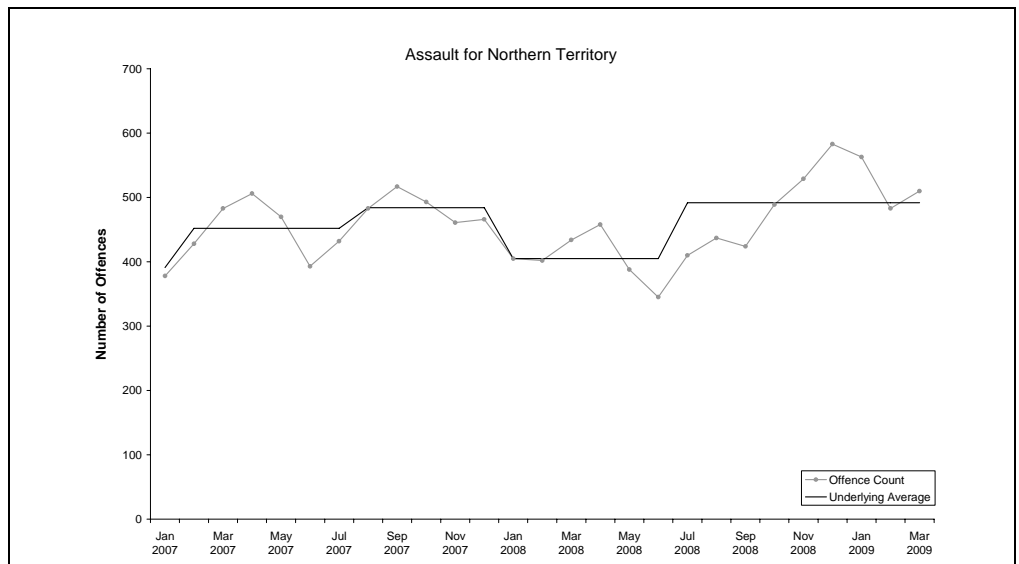
*The underlying average smooths out volatility and identifies major changes in the level of crime.*

### ASSAULT

**Underlying average** – The underlying average level of *assault* has ranged between 391 and 492 offences per month during the past nine quarters. Its current level of **492 per month** is at the higher end of the range.

**Trend** – Over the past 12 months an upward trend was identified.

**Quarterly comparisons** – There were 1556 *assault* offences recorded in the current quarter, a **decrease of 3% (45)** from the previous quarter, but an increase of 25% (315) from the same quarter the previous year.

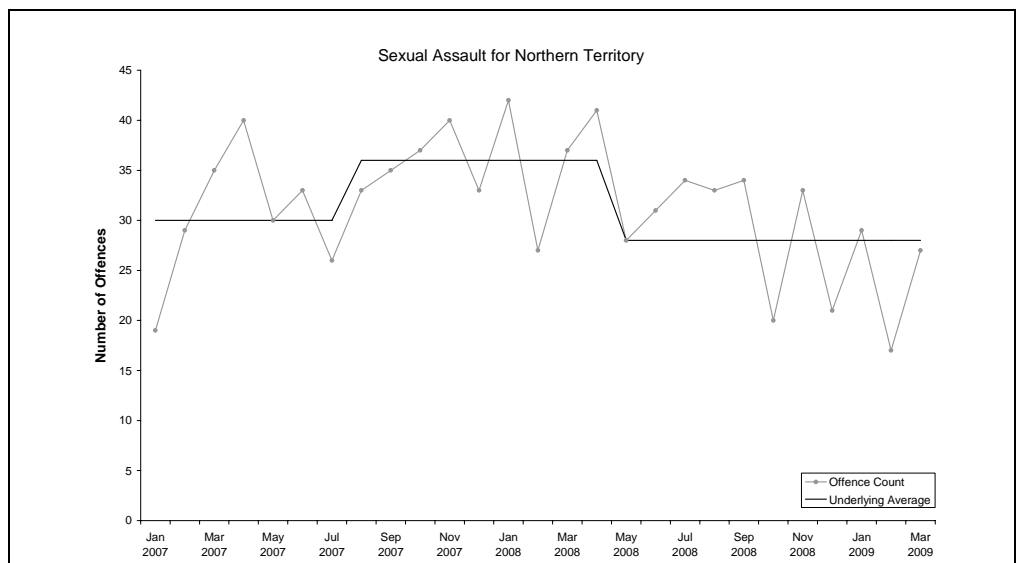


### SEXUAL ASSAULT

**Underlying average** – The underlying average level of *sexual assault* has ranged between 28 and 36 offences per month during the past nine quarters. Its current level of **28 per month** is at the lower end of the range.

**Trend** – Over the past 12 months no trend was identified.

**Quarterly comparisons** – There were 73 *sexual assault* offences recorded in the current quarter, a **decrease of 1% (1)** from the previous quarter and a decrease of 31% (33) from the same quarter the previous year.



\* Source: The Northern Territory Quarterly Crime & Justice Statistics, Issue 27: March Quarter 2009



# Recorded Crime March Quarter 2009 Northern Territory – key findings\*

## Explanatory Notes

*Largely as a result of its small population, statistics in the Northern Territory can be highly volatile with large swings from one period to the next.*

*Consequently recorded crime statistics are presented over an extended period to present the current period's data within the context of any longer term trends.*

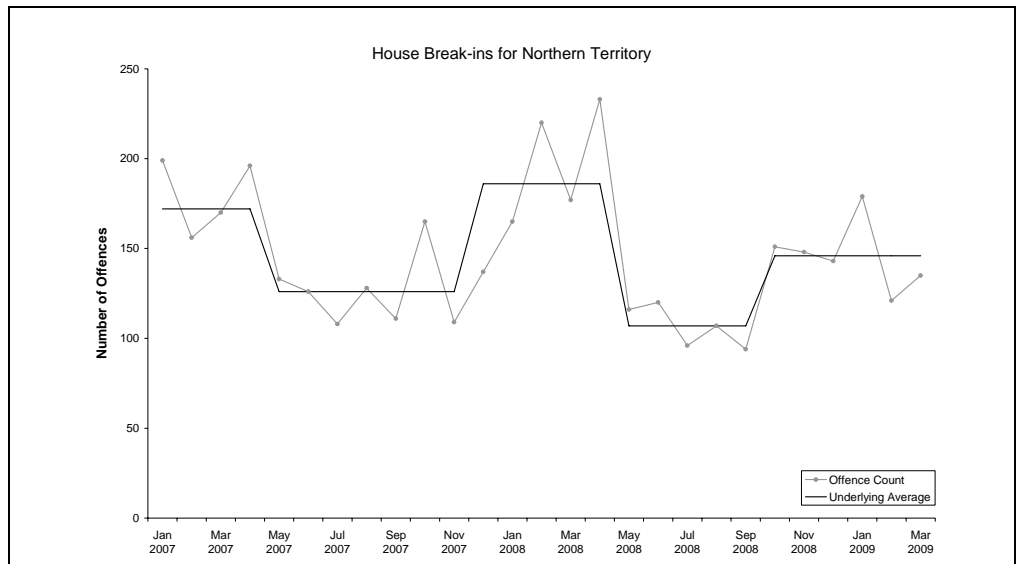
*The underlying average smooths out volatility and identifies major changes in the level of crime.*

## HOUSE BREAK-INS

**Underlying average** – The underlying average level of *house break-ins* has ranged between 107 and 186 offences per month during the past nine quarters. Its current level of **146 per month** is in the middle of the range.

**Trend** – Over the past 12 months no trend was identified.

**Quarterly comparisons** – There were 435 *house break-in* offences recorded in the current quarter, a **decrease of 2% (7)** from the previous quarter and a decrease of 23% (127) from the same quarter the previous year.

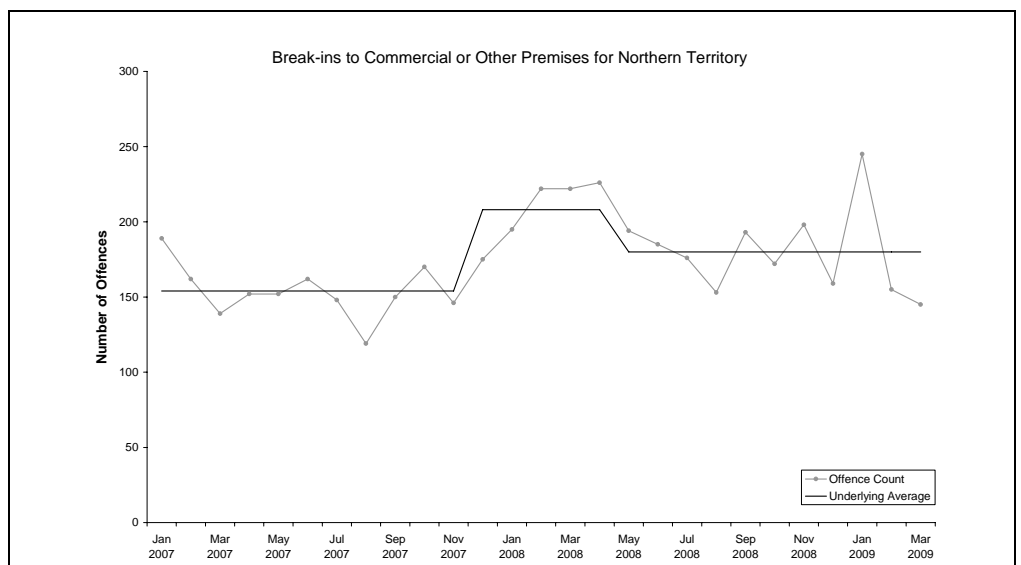


## BREAK-INS TO COMMERCIAL OR OTHER PREMISES

**Underlying average** – The underlying average level of *break-ins to commercial or other premises* has ranged between 154 and 208 offences per month during the past nine quarters. Its current level of **180 per month** is in the middle of the range.

**Trend** – Over the past 12 months no trend was identified.

**Quarterly comparisons** – There were 545 *break-ins to commercial or other premises* offences recorded in the current quarter, an **increase of 3% (16)** from the previous quarter, but a decrease of 15% (94) from the same quarter the previous year.



\* Source: The Northern Territory Quarterly Crime & Justice Statistics, Issue 27: March Quarter 2009

# Recorded Crime March Quarter 2009

## Northern Territory – key findings\*

### Explanatory Notes

*Largely as a result of its small population, statistics in the Northern Territory can be highly volatile with large swings from one period to the next.*

*Consequently recorded crime statistics are presented over an extended period to present the current period's data within the context of any longer term trends.*

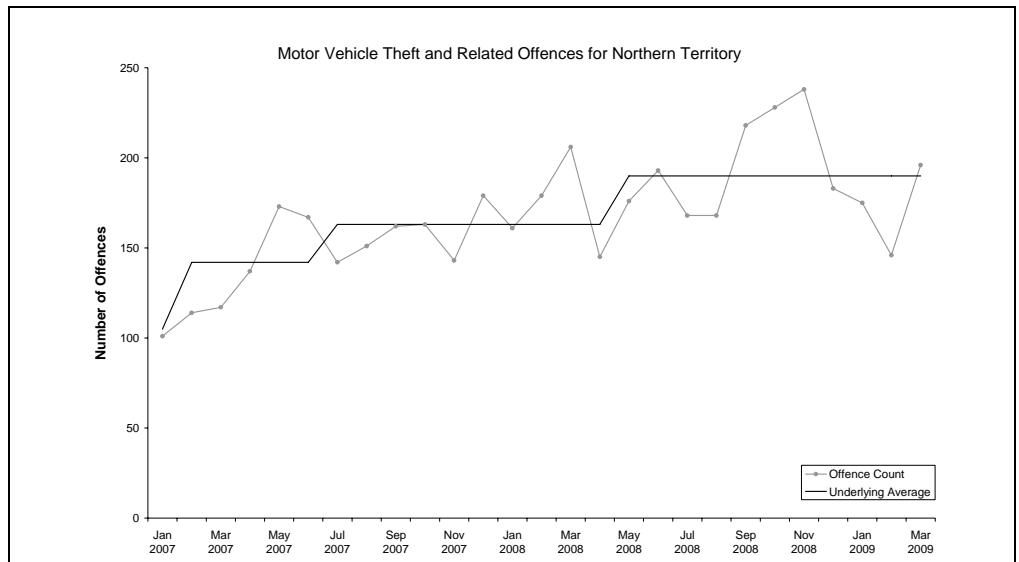
*The underlying average smooths out volatility and identifies major changes in the level of crime.*

### MOTOR VEHICLE THEFT AND RELATED OFFENCES

**Underlying average** – The underlying average level of *motor vehicle theft and related offences* has ranged between 105 and 190 offences per month during the past nine quarters. Its current level of **190 per month** is at the higher end of the range.

**Trend** – Over the past 12 months no trend was identified.

**Quarterly comparisons** – There were 517 *motor vehicle theft and related offences* recorded in the current quarter, a **decrease of 20% (132)** from the previous quarter and a decrease of 5% (29) from the same quarter the previous year.



\* Source: The Northern Territory Quarterly Crime & Justice Statistics, Issue 27: March Quarter 2009



# Recorded Crime March Quarter 2009

## Northern Territory – key findings\*

### Explanatory Notes

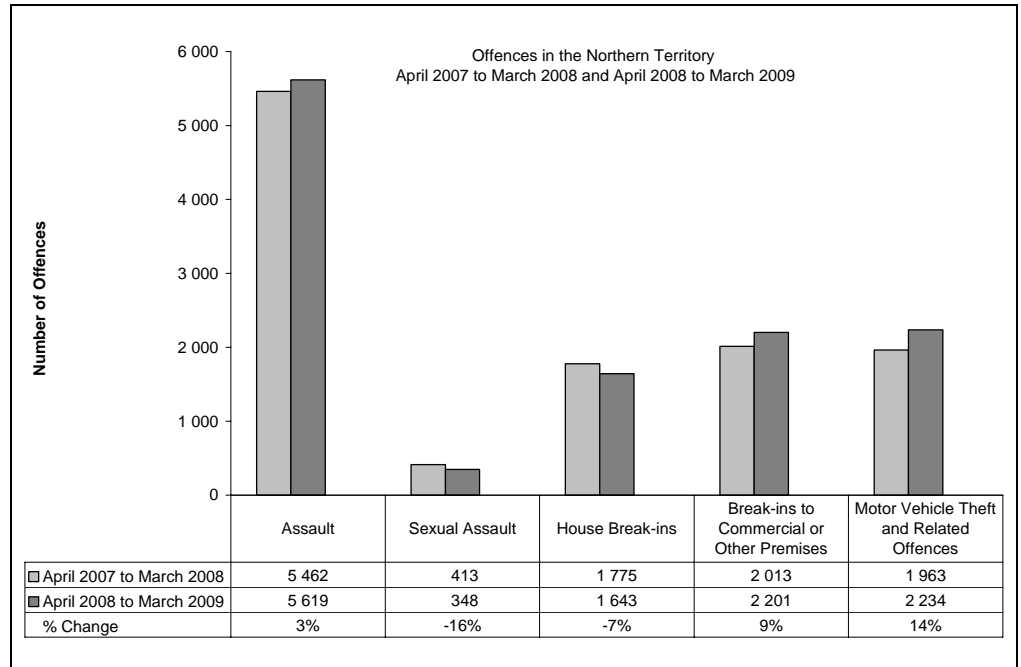
*Largely as a result of its small population, statistics in the Northern Territory can be highly volatile with large swings from one period to the next.*

*Consequently recorded crime statistics are presented over an extended period to present the current period's data within the context of any longer term trends.*

*The underlying average smooths out volatility and identifies major changes in the level of crime.*

### TWELVE-MONTH COMPARISON

Twelve-month figures provide comparable information on how crime has tracked from one 12 month period to the next.



#### Assault

During the 12 months ending March 2009, a total of 5 619 *assault* offences were recorded, **3% (157) more** than the previous 12 months.

#### Sexual Assault

During the 12 months ending March 2009, a total of 348 *sexual assault* offences were recorded, **16% (65) less** than the previous 12 months.

#### House Break-ins

During the 12 months ending March 2009, a total of 1 643 *house break-ins* were recorded, **7% (132) less** than the previous 12 months.

#### Break-ins to Commercial or Other Premises

During the 12 months ending March 2009, a total of 2 201 *break-ins to commercial or other premises* were recorded, **9% (188) more** than the previous 12 months.

#### Motor Vehicle Theft and Related Offences

During the 12 months ending March 2009, a total of 2 234 *motor vehicle theft and related offences* were recorded, **14% (271) more** than the previous 12 months.

\* Source: The Northern Territory Quarterly Crime & Justice Statistics, Issue 27: March Quarter 2009



# Recorded Crime March Quarter 2009

## Northern Territory – key findings\*

### Explanatory Notes

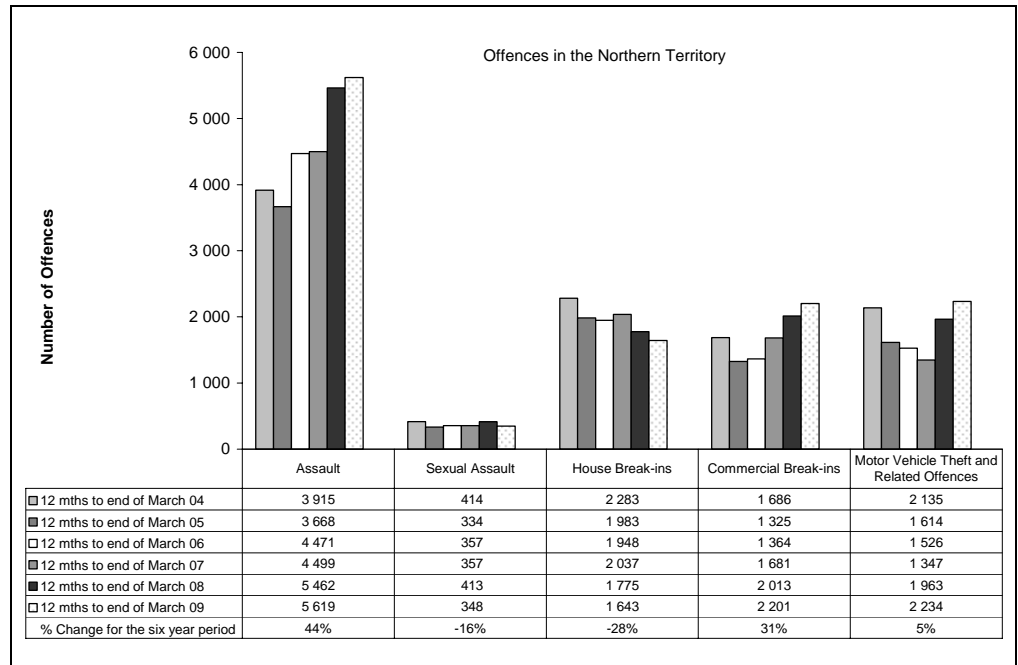
*Largely as a result of its small population, statistics in the Northern Territory can be highly volatile with large swings from one period to the next.*

*Consequently recorded crime statistics are presented over an extended period to present the current period's data within the context of any longer term trends.*

*The underlying average smooths out volatility and identifies major changes in the level of crime.*

### SIX YEAR DATA

Data presented over a six year period provides information to see how recorded crimes have tracked in the longer run.



#### Assault

In late 2004, the Northern Territory Police launched their Violent Crime Reduction Strategy, with a consequential increase in the number of recorded Assault offences in 2005 and subsequent years.

These increases in Assaults largely reflect the impact of operational changes the Police have made in the reporting and recording of domestic violence related Assaults.

During the 12 months ending March 2009, there were 5 619 recorded *assault* offences, **44% (1 704) more** than in the 12 months ending March 2004.

#### Sexual Assault

During the 12 months ending March 2009, there were 348 recorded *sexual assault* offences, **16% (66) less** than in the 12 months ending March 2004.

#### House Break-ins

During the 12 months ending March 2009, there were 1 643 recorded *house break-in* offences, **28% (640) less** than in the 12 months ending March 2004.

#### Commercial Break-ins

During the 12 months ending March 2009, there were 2 201 recorded *commercial break-in* offences, **31% (515) more** than in the 12 months ending March 2004.

#### Motor Vehicle Theft and Related Offences

During the 12 months ending March 2009, there were 2 234 recorded *motor vehicle theft and related offences*, **5% (99) more** than in the 12 months ending March 2004.

\* Source: The Northern Territory Recorded Crime data extract for March Quarter 2009



# Recorded Crime March Quarter 2009

## Darwin – key findings\*

### Explanatory Notes

*Largely as a result of its small population, statistics in the Northern Territory can be highly volatile with large swings from one period to the next.*

*Consequently recorded crime statistics are presented over an extended period to present the current period's data within the context of any longer term trends.*

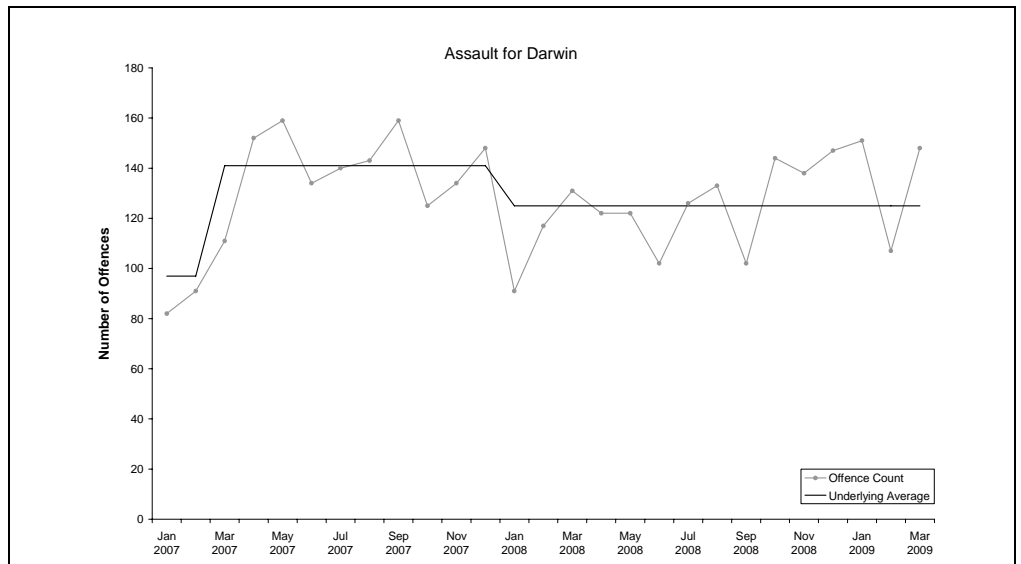
*The underlying average smooths out volatility and identifies major changes in the level of crime.*

### ASSAULT

**Underlying average** – The underlying average level of *assault* has ranged between 97 and 141 offences per month during the past nine quarters. Its current level of **125 per month** is in the middle of the range.

**Trend** – Over the past 12 months an upward trend was identified.

**Quarterly comparisons** – There were 406 *assault* offences recorded in the current quarter, a **decrease of 5% (23)** from the previous quarter, but an increase of 20% (67) from the same quarter the previous year.

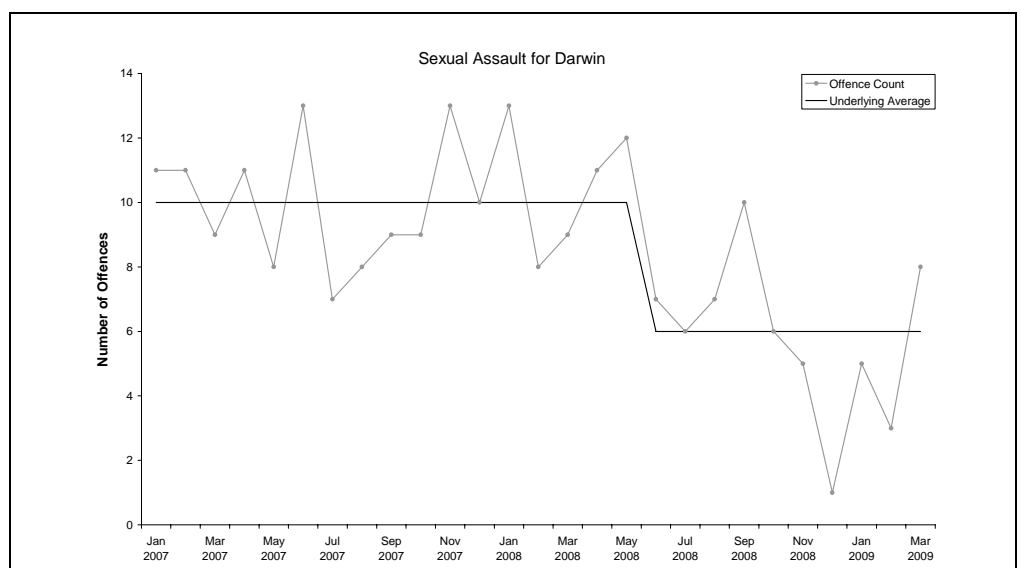


### SEXUAL ASSAULT

**Underlying average** – The underlying average level of *sexual assault* ranged between 6 and 10 offences per month during the past nine quarters. Its current level of **6 per month** is at the lower end of the range.

**Trend** – Over the past 12 months a downward trend was identified.

**Quarterly comparisons** – There were 16 *sexual assault* offences recorded in the current quarter, an **increase of 33% (4)** from the previous quarter, but a decrease of 47% (14) from the same quarter the previous year.



\* Source: The Northern Territory Quarterly Crime & Justice Statistics, Issue 27: March Quarter 2009



# Recorded Crime March Quarter 2009

## Darwin – key findings\*

### Explanatory Notes

Largely as a result of its small population, statistics in the Northern Territory can be highly volatile with large swings from one period to the next.

Consequently recorded crime statistics are presented over an extended period to present the current period's data within the context of any longer term trends.

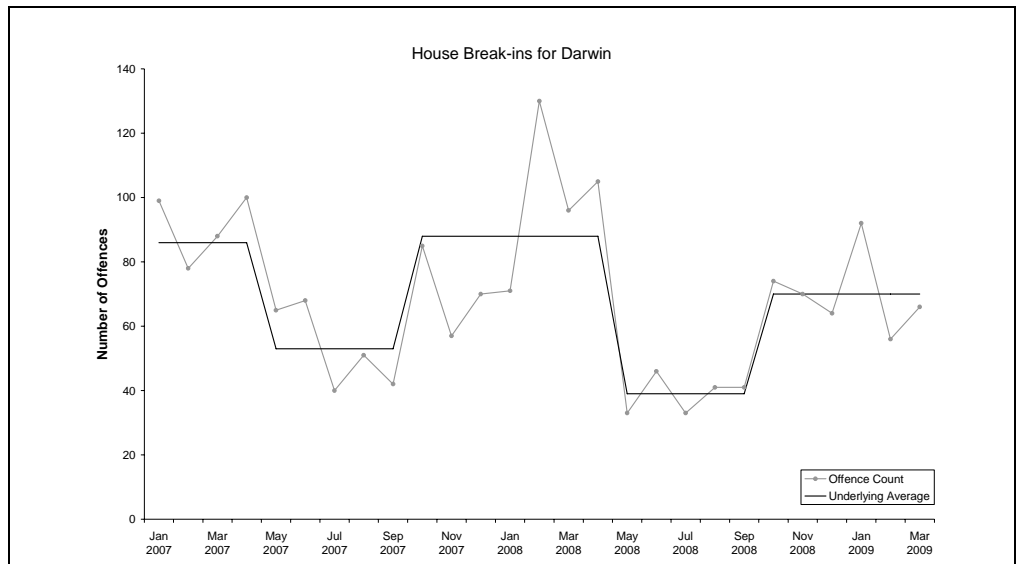
The underlying average smooths out volatility and identifies major changes in the level of crime.

### HOUSE BREAK-INS

**Underlying average** – The underlying average level of *house break-ins* has ranged between 39 and 88 offences per month during the past nine quarters. Its current level of **70 per month** is in the middle of the range.

**Trend** – Over the past 12 months no trend was identified.

**Quarterly comparisons** – There were 214 *house break-in* offences recorded in the current quarter, an **increase of 3% (6)** from the previous quarter, but a decrease of 28% (83) from the same quarter the previous year.

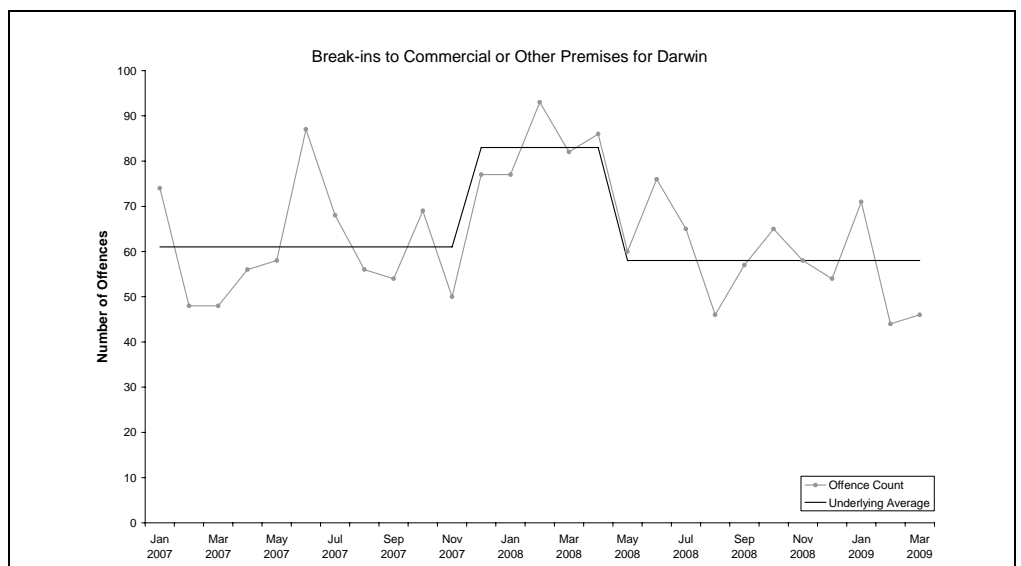


### BREAK-INS TO COMMERCIAL OR OTHER PREMISES

**Underlying average** – The underlying average level of *break-ins to commercial or other premises* has ranged between 58 and 83 offences per month during the past nine quarters. Its current level of **58 per month** is at the lower end of the range.

**Trend** – Over the past 12 months a downward trend was identified.

**Quarterly comparisons** – There were 161 *break-ins to commercial or other premises* offences recorded in the current quarter, a **decrease of 9% (16)** from the previous quarter and a decrease of 36% (91) from the same quarter the previous year.



\* Source: The Northern Territory Quarterly Crime & Justice Statistics, Issue 27: March Quarter 2009



### Explanatory Notes

*Largely as a result of its small population, statistics in the Northern Territory can be highly volatile with large swings from one period to the next.*

*Consequently recorded crime statistics are presented over an extended period to present the current period's data within the context of any longer term trends.*

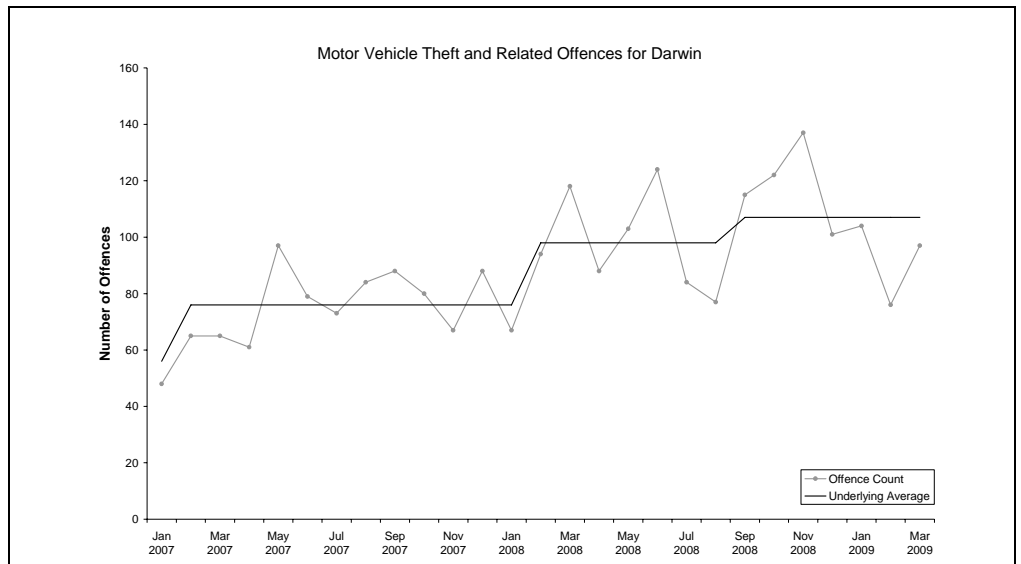
*The underlying average smooths out volatility and identifies major changes in the level of crime.*

### MOTOR VEHICLE THEFT AND RELATED OFFENCES

**Underlying average** – The underlying average level of motor vehicle theft and related offences has ranged between 56 and 107 offences per month during the past nine quarters. Its current level of **107 per month** is at the higher end of the range.

**Trend** – Over the past 12 months no trend was identified.

**Quarterly comparisons** – There were 277 motor vehicle theft and related offences recorded in the current quarter, a **decrease of 23% (83)** from the previous quarter and a decrease of less than 1% (2) from the same quarter the previous year.



\* Source: The Northern Territory Quarterly Crime & Justice Statistics, Issue 27: March Quarter 2009



### Explanatory Notes

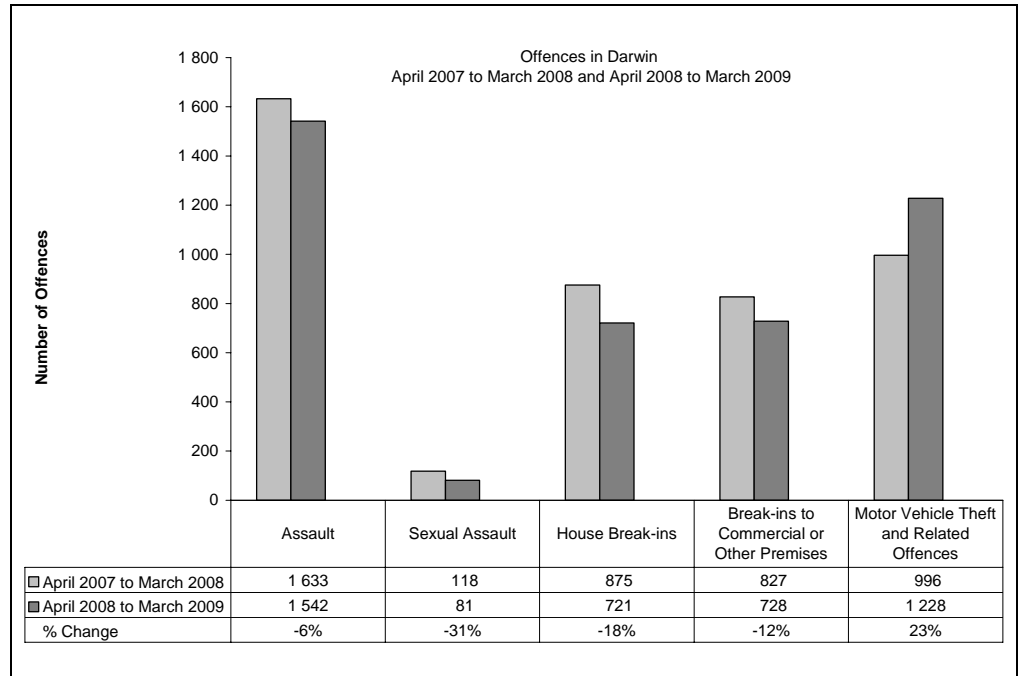
*Largely as a result of its small population, statistics in the Northern Territory can be highly volatile with large swings from one period to the next.*

*Consequently recorded crime statistics are presented over an extended period to present the current period's data within the context of any longer term trends.*

*The underlying average smooths out volatility and identifies major changes in the level of crime.*

### TWELVE-MONTH COMPARISON

Twelve-month figures provide comparable information on how crime has tracked from one 12 month period to the next.



#### Assault

During the 12 months ending March 2009, a total of 1 542 *assault* offences were recorded, **6% (91) less** than the previous 12 months.

#### Sexual Assault

During the 12 months ending March 2009, a total of 81 *sexual assault* offences were recorded, **31% (37) less** than the previous 12 months.

#### House Break-ins

During the 12 months ending March 2009, a total of 721 *house break-ins* were recorded, **18% (154) less** than the previous 12 months.

#### Break-ins to Commercial or Other Premises

During the 12 months ending March 2009, a total of 728 *break-ins to commercial or other premises* were recorded, **12% (99) less** than the previous 12 months.

#### Motor Vehicle Theft and Related Offences

During the 12 months ending March 2009, a total of 1 228 *motor vehicle theft and related offences* were recorded, **23% (232) more** than the previous 12 months.

\* Source: The Northern Territory Quarterly Crime & Justice Statistics, Issue 27: March Quarter 2009



# Recorded Crime March Quarter 2009

## Darwin – key findings\*

### Explanatory Notes

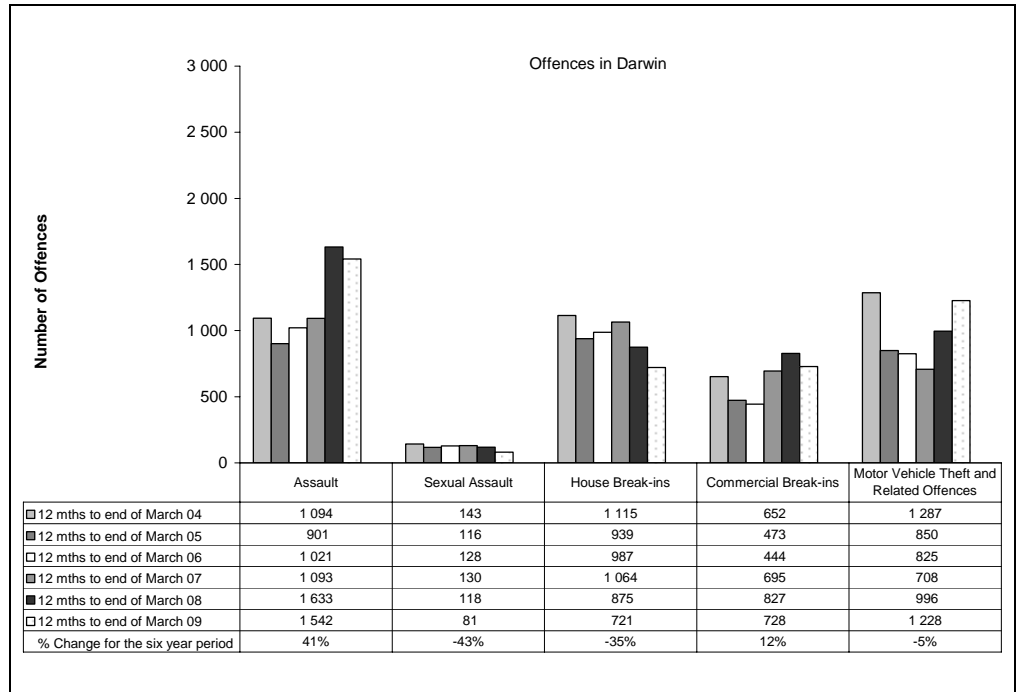
*Largely as a result of its small population, statistics in the Northern Territory can be highly volatile with large swings from one period to the next.*

*Consequently recorded crime statistics are presented over an extended period to present the current period's data within the context of any longer term trends.*

*The underlying average smooths out volatility and identifies major changes in the level of crime.*

### SIX YEAR DATA

Data presented over a six year period provides information to see how recorded crimes have tracked in the longer run.



### Assault

In late 2004, the Northern Territory Police launched their Violent Crime Reduction Strategy, with a consequential increase in the number of recorded Assault offences in 2005 and subsequent years.

These increases in Assaults largely reflect the impact of operational changes the Police have made in the reporting and recording of domestic violence related Assaults.

During the 12 months ending March 2009, there were 1 542 recorded assault offences, **41% (448) more** than in the 12 months ending March 2004.

### Sexual Assault

During the 12 months ending March 2009, there were 81 recorded sexual assault offences, **43% (62) less** than in the 12 months ending March 2004.

### House Break-ins

During the 12 months ending March 2009, there were 721 recorded house break-in offences, **35% (394) less** than in the 12 months ending March 2004.

### Commercial Break-ins

During the 12 months ending March 2009, there were 728 recorded commercial break-in offences, **12% (76) more** than in the 12 months ending March 2004.

### Motor Vehicle Theft and Related Offences

During the 12 months ending March 2009, there were 1 228 recorded motor vehicle theft and related offences, **5% (59) less** than in the 12 months ending March 2004.

\* Source: The Northern Territory Recorded Crime data extract for March Quarter 2009

# Recorded Crime March Quarter 2009

## Palmerston – key findings\*

### Explanatory Notes

*Largely as a result of its small population, statistics in the Northern Territory can be highly volatile with large swings from one period to the next.*

*Consequently recorded crime statistics are presented over an extended period to present the current period's data within the context of any longer term trends.*

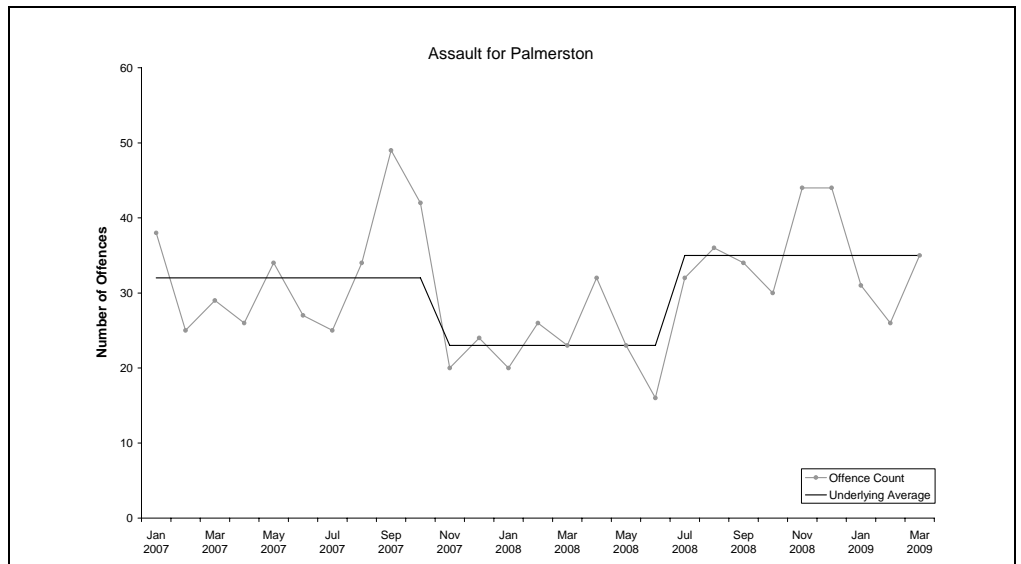
*The underlying average smooths out volatility and identifies major changes in the level of crime.*

### ASSAULT

**Underlying average** – The underlying average level of *assault* has ranged between 23 and 35 offences per month during the past nine quarters. Its current level of **35 per month** is at the higher end of the range.

**Trend** – Over the past 12 months no trend was identified.

**Quarterly comparisons** – There were 92 *assault* offences recorded in the current quarter, a **decrease of 22% (26)** from the previous quarter, but an increase of 33% (23) from the same quarter the previous year.

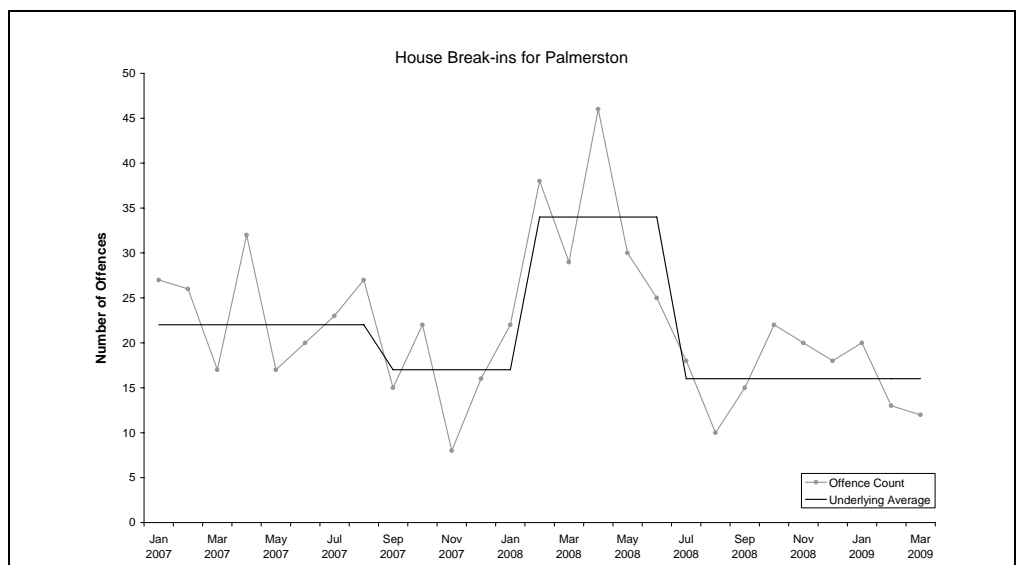


### HOUSE BREAK-INS

**Underlying average** – The underlying average level of *house break-ins* has ranged between 16 and 34 offences per month during the past nine quarters. Its current level of **16 per month** is at the lower end of the range.

**Trend** – Over the past 12 months a downward trend was identified.

**Quarterly comparisons** – There were 45 *house break-in* offences recorded in the current quarter, a **decrease of 25% (15)** from the previous quarter and a decrease of 49% (44) from the same quarter the previous year.



\* Source: The Northern Territory Quarterly Crime & Justice Statistics, Issue 27: March Quarter 2009



# Recorded Crime March Quarter 2009

## Palmerston – key findings\*

### Explanatory Notes

Largely as a result of its small population, statistics in the Northern Territory can be highly volatile with large swings from one period to the next.

Consequently recorded crime statistics are presented over an extended period to present the current period's data within the context of any longer term trends.

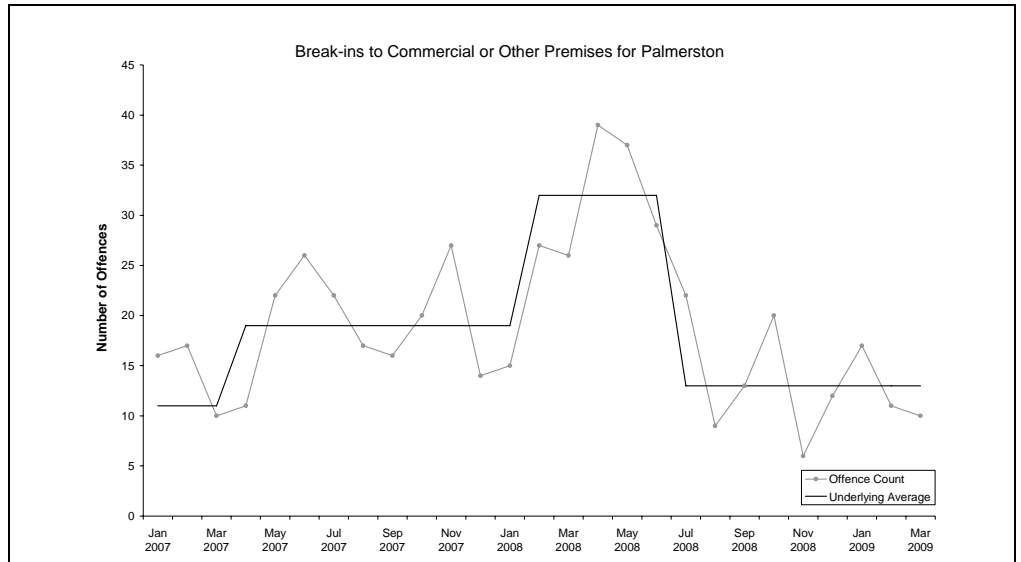
The underlying average smooths out volatility and identifies major changes in the level of crime.

### BREAK-INS TO COMMERCIAL OR OTHER PREMISES

**Underlying average** – The underlying average level of *break-ins to commercial or other premises* has ranged between 11 and 32 offences per month during the past nine quarters. Its current level of **13 per month** is at the lower end of the range.

**Trend** – Over the past 12 months a downward trend was identified.

**Quarterly comparisons** – There were 38 *break-ins to commercial or other premises* offences recorded in the current quarter, **no change** from the previous quarter, but a decrease of 44% (30) from the same quarter the previous year.

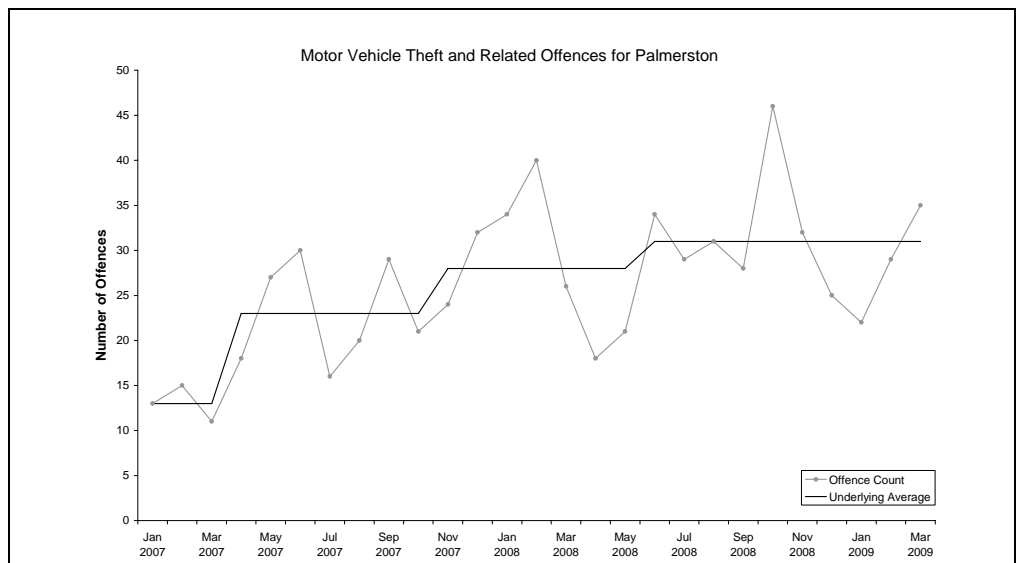


### MOTOR VEHICLE THEFT AND RELATED OFFENCES

**Underlying average** – The underlying average level of *motor vehicle theft and related offences* has ranged between 13 and 31 offences per month during the past nine quarters. Its current level of **31 per month** is at the higher end of the range.

**Trend** – Over the past 12 months no trend was identified.

**Quarterly comparisons** – There were 86 *motor vehicle theft and related offences* recorded in the current quarter, a **decrease of 17% (17)** from the previous quarter and a decrease of 14% (14) from the same quarter the previous year.



\* Source: The Northern Territory Quarterly Crime & Justice Statistics, Issue 27: March Quarter 2009



# Recorded Crime March Quarter 2009

## Palmerston – key findings\*

### Explanatory Notes

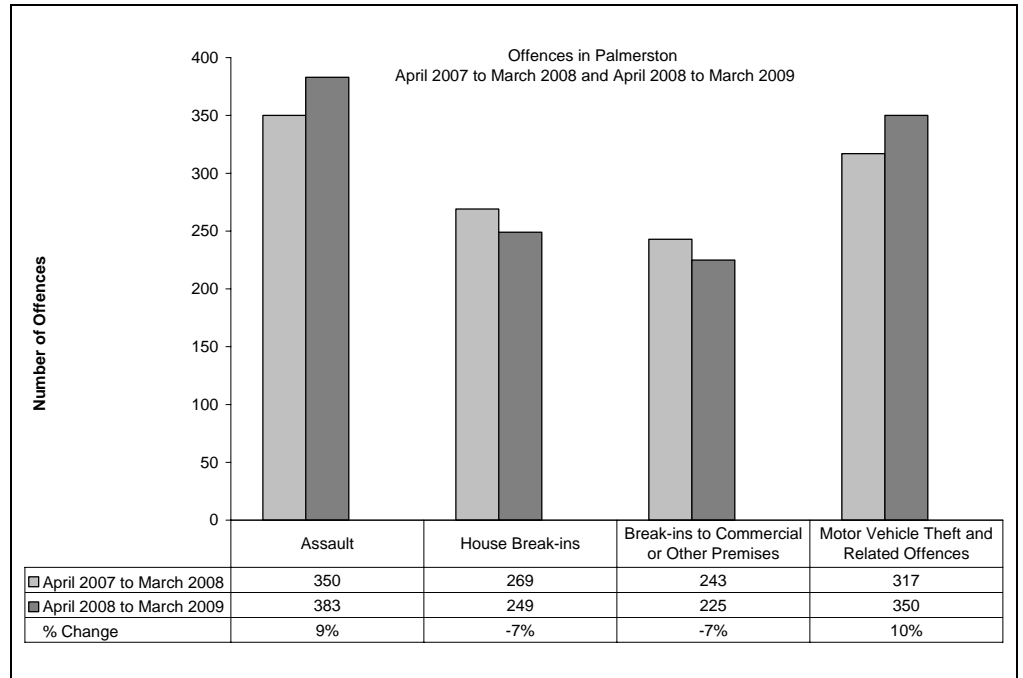
*Largely as a result of its small population, statistics in the Northern Territory can be highly volatile with large swings from one period to the next.*

*Consequently recorded crime statistics are presented over an extended period to present the current period's data within the context of any longer term trends.*

*The underlying average smooths out volatility and identifies major changes in the level of crime.*

### TWELVE-MONTH COMPARISON

Twelve-month figures provide comparable information on how crime has tracked from one 12 month period to the next.



#### Assault

During the 12 months ending March 2009, a total of 383 *assault* offences were recorded, **9% (33) more** than the previous 12 months.

#### House Break-ins

During the 12 months ending March 2009, a total of 249 *house break-ins* were recorded, **7% (20) less** than the previous 12 months.

#### Break-ins to Commercial or Other Premises

During the 12 months ending March 2009, a total of 225 *break-ins to commercial or other premises* were recorded, **7% (18) less** than the previous 12 months.

#### Motor Vehicle Theft and Related Offences

During the 12 months ending March 2009, a total of 350 *motor vehicle theft and related offences* were recorded, **10% (33) more** than the previous 12 months.

\* Source: The Northern Territory Quarterly Crime & Justice Statistics, Issue 27: March Quarter 2009



## Palmerston – key findings\*

### Explanatory Notes

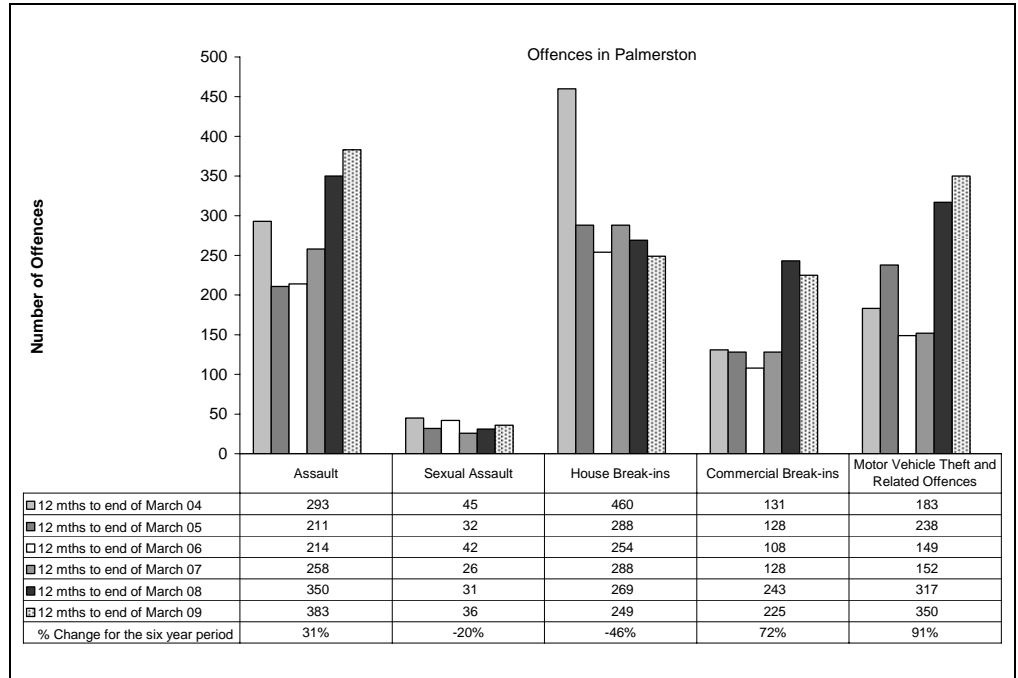
Largely as a result of its small population, statistics in the Northern Territory can be highly volatile with large swings from one period to the next.

Consequently recorded crime statistics are presented over an extended period to present the current period's data within the context of any longer term trends.

The underlying average smooths out volatility and identifies major changes in the level of crime.

### SIX YEAR DATA

Data presented over a six year period provides information to see how recorded crimes have tracked in the longer run.



### Assault

In late 2004, the Northern Territory Police launched their Violent Crime Reduction Strategy, with a consequential increase in the number of recorded Assault offences in 2005 and subsequent years.

These increases in Assaults largely reflect the impact of operational changes the Police have made in the reporting and recording of domestic violence related Assaults.

During the 12 months ending March 2009, there were 383 recorded *assault* offences, **31% (90) more** than in the 12 months ending March 2004.

### Sexual Assault

During the 12 months ending March 2009, there were 36 recorded *sexual assault* offences, **20% (9) less** than in the 12 months ending March 2004.

### House Break-ins

During the 12 months ending March 2009, there were 249 recorded *house break-in* offences, **46% (211) less** than in the 12 months ending March 2004.

### Commercial Break-ins

During the 12 months ending March 2009, there were 225 recorded *commercial break-in* offences, **72% (94) more** than in the 12 months ending March 2004.

### Motor Vehicle Theft and Related Offences

During the 12 months ending March 2009, there were 350 recorded *motor vehicle theft and related offences*, **91% (167) more** than in the 12 months ending March 2004.

\* Source: The Northern Territory Recorded Crime data extract for March Quarter 2009



# Recorded Crime March Quarter 2009

## Alice Springs – key findings\*

### Explanatory Notes

Largely as a result of its small population, statistics in the Northern Territory can be highly volatile with large swings from one period to the next.

Consequently recorded crime statistics are presented over an extended period to present the current period's data within the context of any longer term trends.

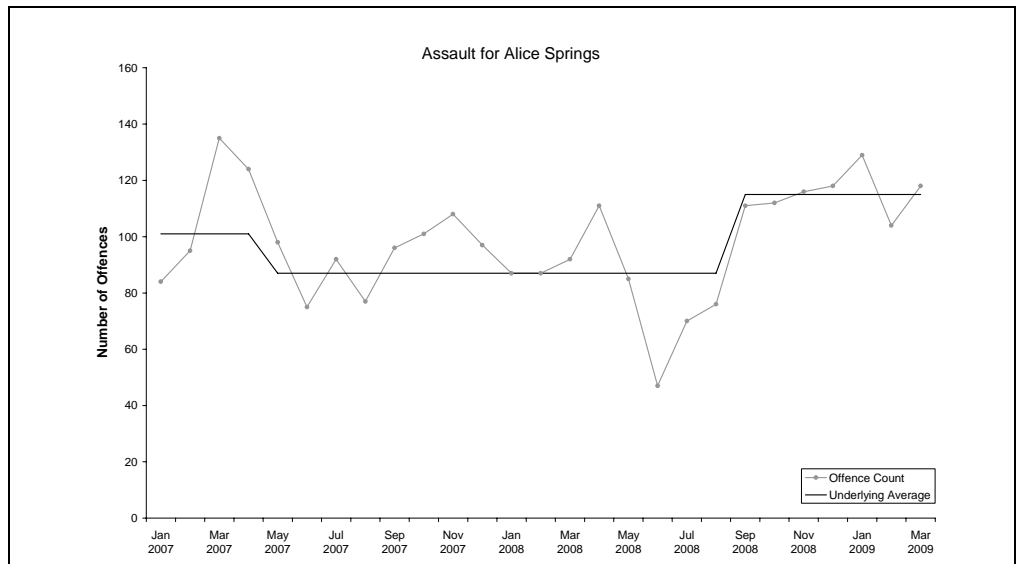
The underlying average smooths out volatility and identifies major changes in the level of crime.

### ASSAULT

**Underlying average** – The underlying average level of *assault* has ranged between 87 and 115 offences per month during the past nine quarters. Its current level of **115 per month** is at the higher end of the range.

**Trend** – Over the past 12 months an upward trend was identified.

**Quarterly comparisons** – There were 351 *assault* offences recorded in the current quarter, an **increase of 1% (5)** from the previous quarter and an increase of 32% (85) from the same quarter the previous year.

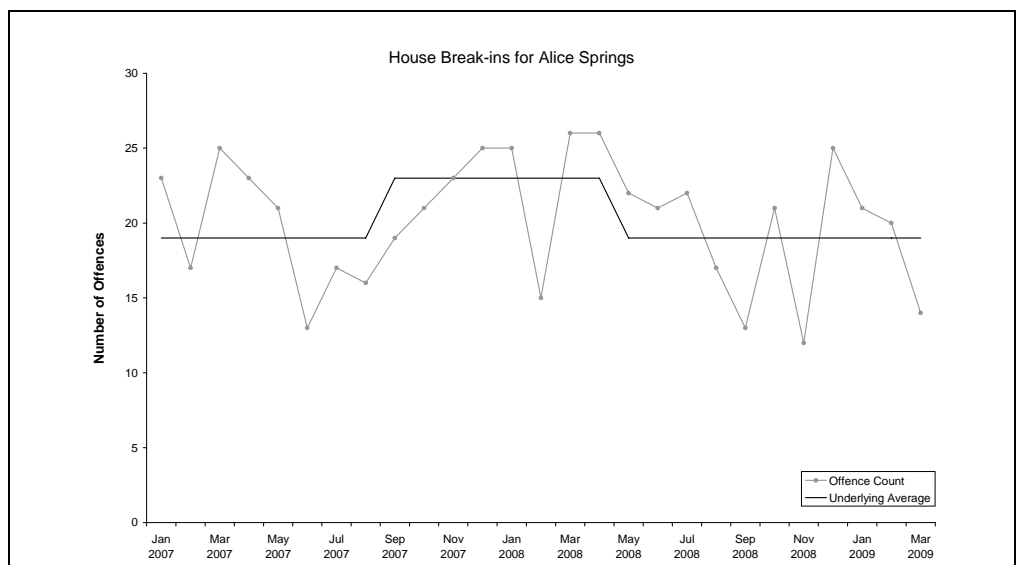


### HOUSE BREAK-INS

**Underlying average** – The underlying average level of *house break-ins* has ranged between 19 and 23 offences per month during the past nine quarters. Its current level of **19 per month** is at the lower end of the range.

**Trend** – Over the past 12 months no trend was identified.

**Quarterly comparisons** – There were 55 *house break-in* offences recorded in the current quarter, a **decrease of 5% (3)** from the previous quarter and a decrease of 17% (11) from the same quarter the previous year.



\* Source: The Northern Territory Quarterly Crime & Justice Statistics, Issue 27: March Quarter 2009



# Recorded Crime March Quarter 2009

## Alice Springs – key findings\*

### Explanatory Notes

Largely as a result of its small population, statistics in the Northern Territory can be highly volatile with large swings from one period to the next.

Consequently recorded crime statistics are presented over an extended period to present the current period's data within the context of any longer term trends.

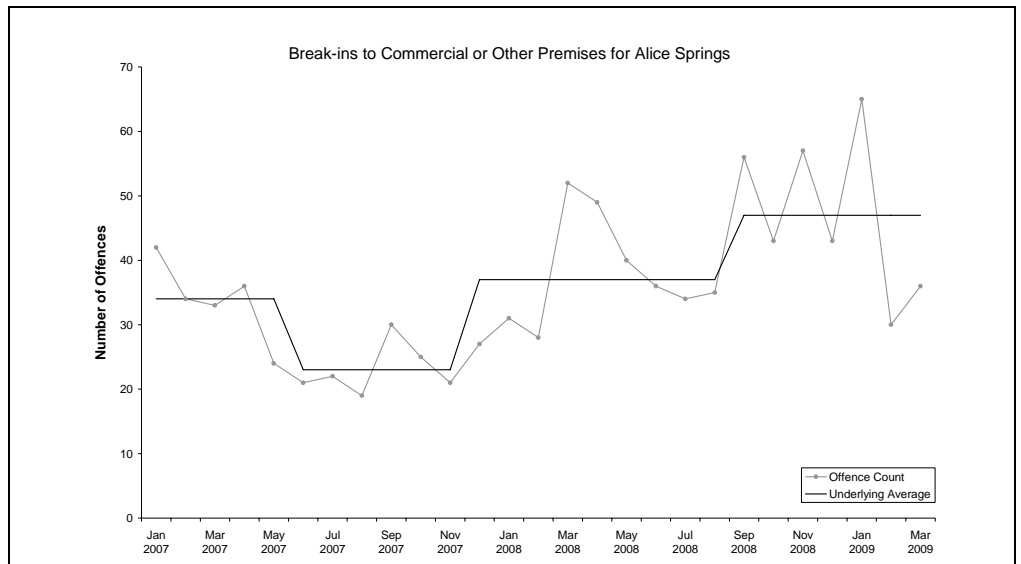
The underlying average smooths out volatility and identifies major changes in the level of crime.

### BREAK-INS TO COMMERCIAL OR OTHER PREMISES

**Underlying average** – The underlying average level of *break-ins to commercial or other premises* has ranged between 23 and 47 offences per month during the past nine quarters. Its current level of **47 per month** is at the higher end of the range.

**Trend** – Over the past 12 months no trend was identified.

**Quarterly comparisons** – There were 131 *break-ins to commercial or other premises* offences recorded in the current quarter, a **decrease of 8% (12)** from the previous quarter, but an increase of 18% (20) from the same quarter the previous year.

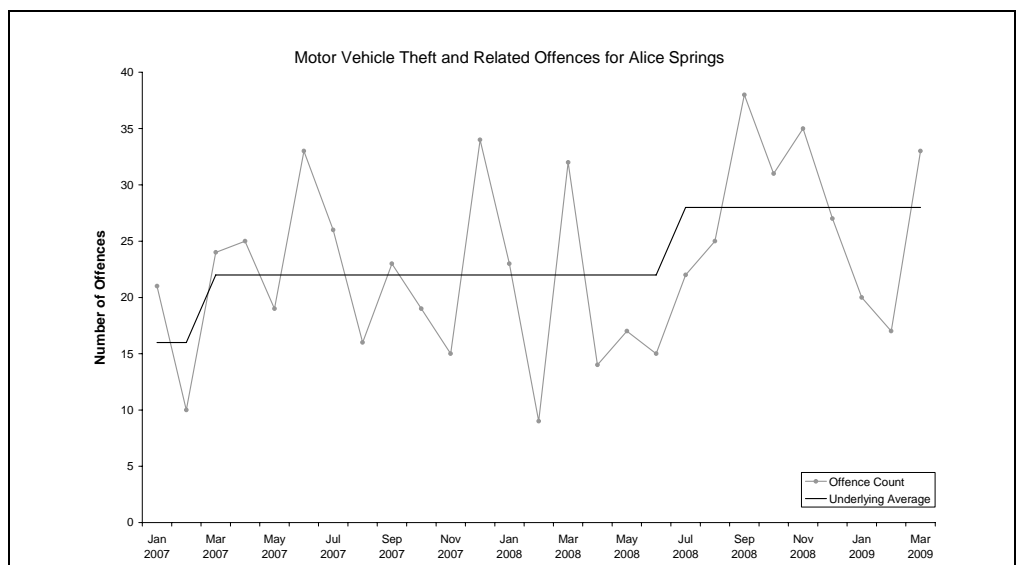


### MOTOR VEHICLE THEFT AND RELATED OFFENCES

**Underlying average** – The underlying average level of *motor vehicle theft and related offences* has ranged between 16 and 28 offences per month during the past nine quarters. Its current level of **28 per month** is at the higher end of the range.

**Trend** – Over the past 12 months no trend was identified.

**Quarterly comparisons** – There were 70 *motor vehicle theft and related offences* recorded in the current quarter, a **decrease of 25% (23)** from the previous quarter, but an increase of 9% (6) from the same quarter the previous year.



\* Source: The Northern Territory Quarterly Crime & Justice Statistics, Issue 27: March Quarter 2009



# Recorded Crime March Quarter 2009

## Alice Springs – key findings\*

### Explanatory Notes

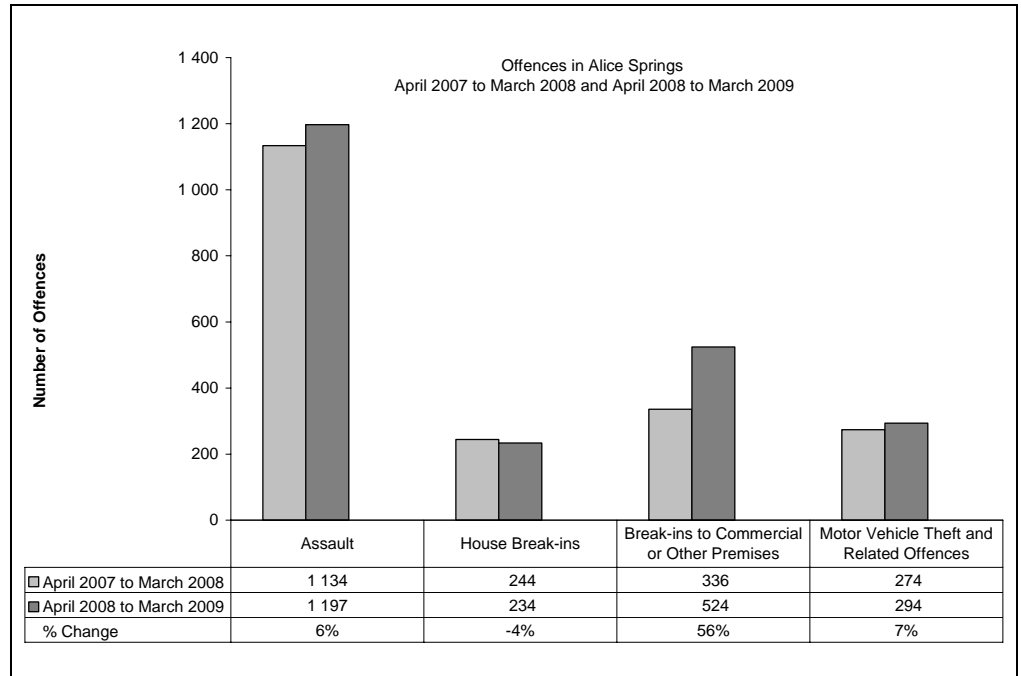
*Largely as a result of its small population, statistics in the Northern Territory can be highly volatile with large swings from one period to the next.*

*Consequently recorded crime statistics are presented over an extended period to present the current period's data within the context of any longer term trends.*

*The underlying average smooths out volatility and identifies major changes in the level of crime.*

### TWELVE-MONTH COMPARISON

Twelve-month figures provide comparable information on how crime has tracked from one 12 month period to the next.



#### Assault

During the 12 months ending March 2009, a total of 1 197 *assault* offences were recorded, **6% (63) more** than the previous 12 months.

#### House Break-ins

During the 12 months ending March 2009, a total of 234 *house break-ins* were recorded, **4% (10) less** than the previous 12 months.

#### Break-ins to Commercial or Other Premises

During the 12 months ending March 2009, a total of 524 *break-ins to commercial or other premises* were recorded, **56% (188) more** than the previous 12 months.

#### Motor Vehicle Theft and Related Offences

During the 12 months ending March 2009, a total of 294 *motor vehicle theft and related offences* were recorded, **7% (20) more** than the previous 12 months.

\* Source: The Northern Territory Quarterly Crime & Justice Statistics, Issue 27: March Quarter 2009



# Recorded Crime March Quarter 2009

## Alice Springs – key findings\*

### Explanatory Notes

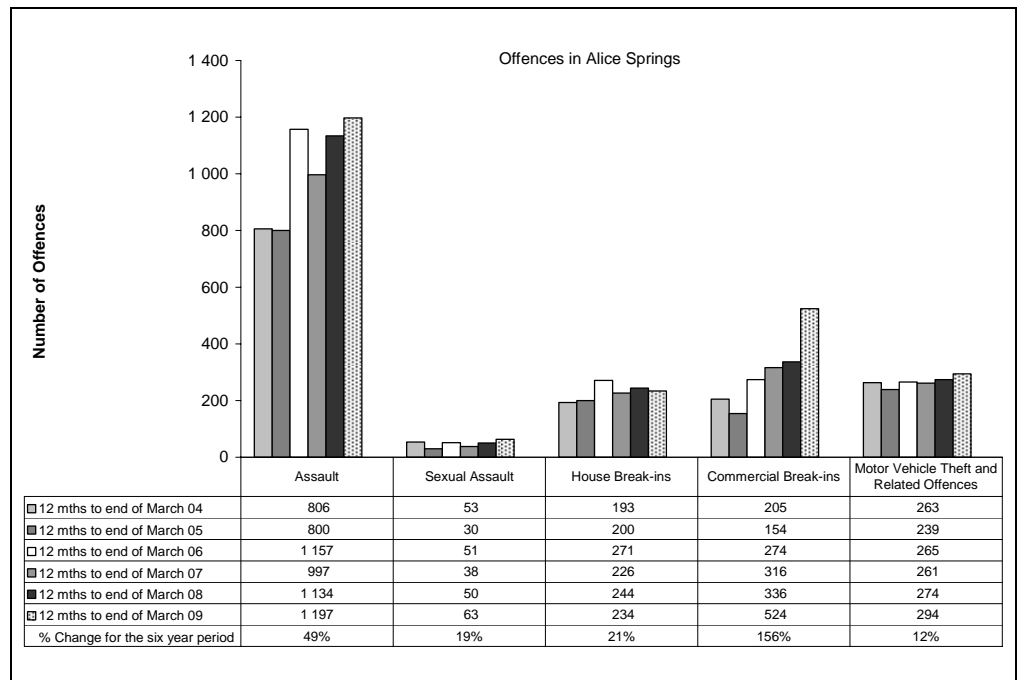
*Largely as a result of its small population, statistics in the Northern Territory can be highly volatile with large swings from one period to the next.*

*Consequently recorded crime statistics are presented over an extended period to present the current period's data within the context of any longer term trends.*

*The underlying average smooths out volatility and identifies major changes in the level of crime.*

### SIX YEAR DATA

Data presented over a six year period provides information to see how recorded crimes have tracked in the longer run.



#### Assault

In late 2004, the Northern Territory Police launched their Violent Crime Reduction Strategy, with a consequential increase in the number of recorded Assault offences in 2005 and subsequent years.

These increases in Assaults largely reflect the impact of operational changes the Police have made in the reporting and recording of domestic violence related Assaults.

During the 12 months ending March 2009, there were 1 197 recorded *assault* offences, **49% (391) more** than in the 12 months ending March 2004.

#### Sexual Assault

During the 12 months ending March 2009, there were 63 recorded *sexual assault* offences, **19% (10) more** than in the 12 months ending March 2004.

#### House Break-ins

During the 12 months ending March 2009, there were 234 recorded *house break-in* offences, **21% (41) more** than in the 12 months ending March 2004.

#### Commercial Break-ins

During the 12 months ending March 2009, there were 524 recorded *commercial break-in* offences, **156% (319) more** than in the 12 months ending March 2004.

#### Motor Vehicle Theft and Related Offences

During the 12 months ending March 2009, there were 294 recorded *motor vehicle theft and related offences*, **12% (31) more** than in the 12 months ending March 2004.

\* Source: The Northern Territory Recorded Crime data extract for March Quarter 2009



# Recorded Crime March Quarter 2009

## Katherine – key findings\*

### Explanatory Notes

Largely as a result of its small population, statistics in the Northern Territory can be highly volatile with large swings from one period to the next.

Consequently recorded crime statistics are presented over an extended period to present the current period's data within the context of any longer term trends.

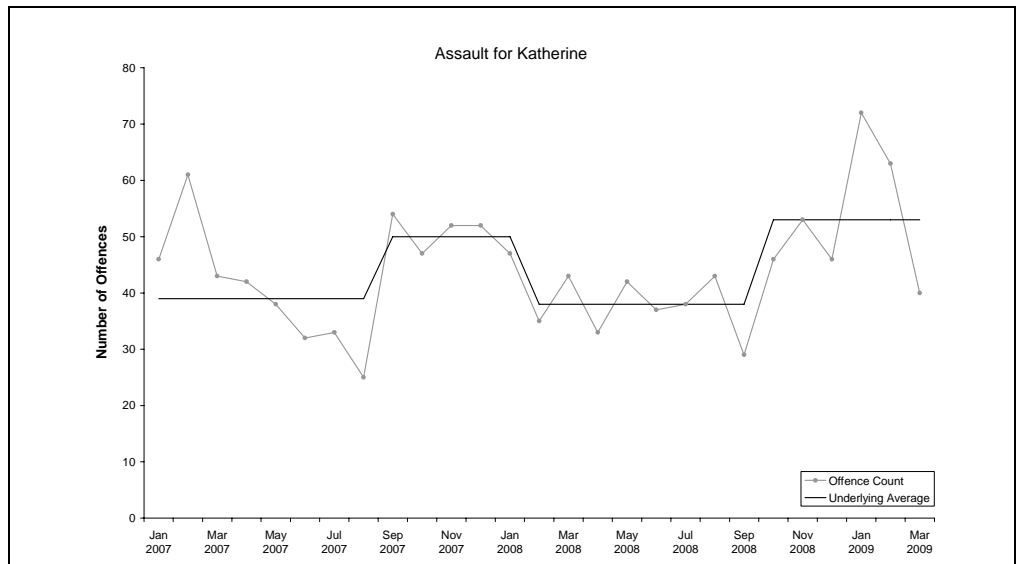
The underlying average smooths out volatility and identifies major changes in the level of crime.

### ASSAULT

**Underlying average** – The underlying average level of *assault* has ranged between 38 and 53 offences per month during the past nine quarters. Its current level of **53 per month** is at the higher end of the range.

**Trend** – Over the past 12 months an upward trend was identified.

**Quarterly comparisons** – There were 175 *assault* offences recorded in the current quarter, an **increase of 21% (30)** from the previous quarter and an increase of 40% (50) from the same quarter the previous year.

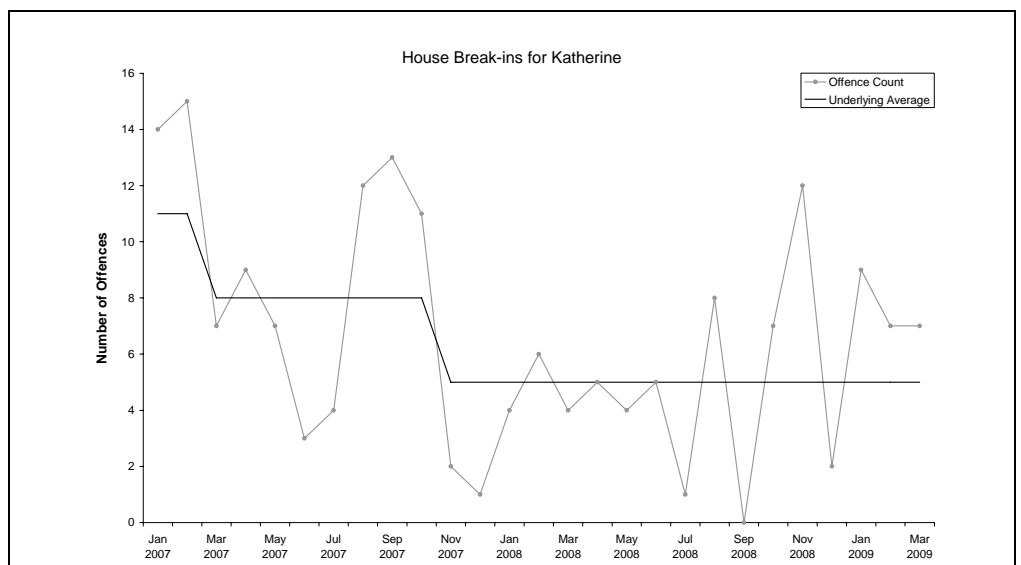


### HOUSE BREAK-INS

**Underlying average** – The underlying average level of *house break-ins* has ranged between 5 and 11 offences per month during the past nine quarters. Its current level of **5 per month** is at the lower end of the range.

**Trend** – Over the past 12 months no trend was identified.

**Quarterly comparisons** – There were 23 *house break-in* offences recorded in the current quarter, an **increase of 10% (2)** from the previous quarter and an increase of 64% (9) from the same quarter the previous year.



\* Source: The Northern Territory Quarterly Crime & Justice Statistics, Issue 27: March Quarter 2009

# Recorded Crime March Quarter 2009

## Katherine – key findings\*

### Explanatory Notes

*Largely as a result of its small population, statistics in the Northern Territory can be highly volatile with large swings from one period to the next.*

*Consequently recorded crime statistics are presented over an extended period to present the current period's data within the context of any longer term trends.*

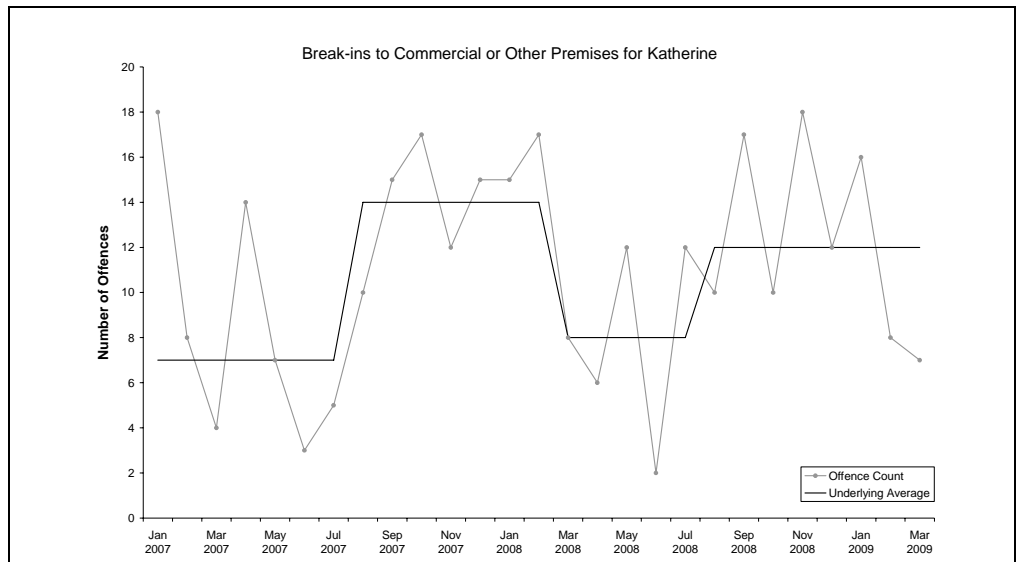
*The underlying average smooths out volatility and identifies major changes in the level of crime.*

### BREAK-INS TO COMMERCIAL OR OTHER PREMISES

**Underlying average** – The underlying average level of *break-ins to commercial or other premises* has ranged between 7 and 14 offences per month during the past nine quarters. Its current level of **12 per month** is in the middle of the range.

**Trend** – Over the past 12 months no trend was identified.

**Quarterly comparisons** – There were 31 *break-ins to commercial or other premises* offences recorded in the current quarter, a **decrease of 23% (9)** from the previous quarter and a decrease of 23% (9) from the same quarter the previous year.

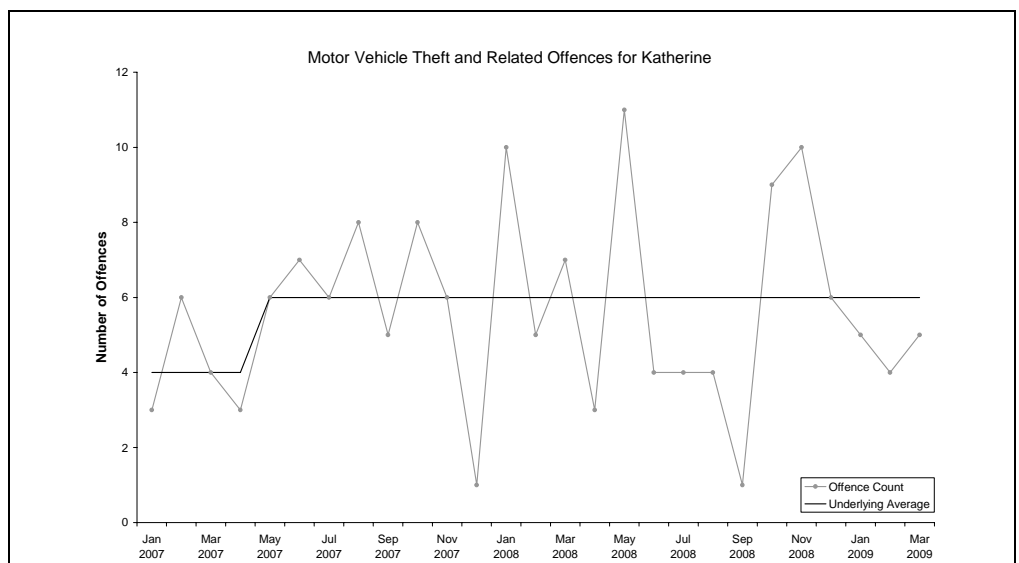


### MOTOR VEHICLE THEFT AND RELATED OFFENCES

**Underlying average** – The underlying average level of *motor vehicle theft and related offences* has ranged between 4 and 6 offences per month during the past nine quarters. Its current level of **6 per month** is at the higher end of the range.

**Trend** – Over the past 12 months no trend was identified.

**Quarterly comparisons** – There were 14 *motor vehicle theft and related offences* recorded in the current quarter, a **decrease of 44% (11)** from the previous quarter and a decrease of 36% (8) from the same quarter the previous year.



\* Source: The Northern Territory Quarterly Crime & Justice Statistics, Issue 27: March Quarter 2009



# Recorded Crime March Quarter 2009

## Katherine – key findings\*

### Explanatory Notes

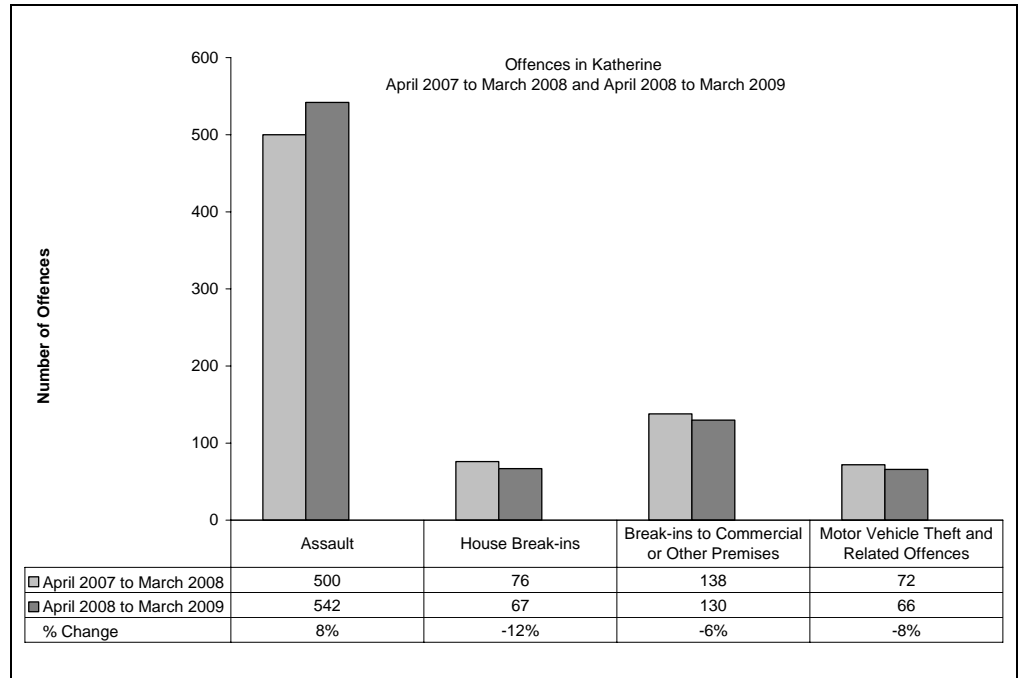
*Largely as a result of its small population, statistics in the Northern Territory can be highly volatile with large swings from one period to the next.*

*Consequently recorded crime statistics are presented over an extended period to present the current period's data within the context of any longer term trends.*

*The underlying average smooths out volatility and identifies major changes in the level of crime.*

### TWELVE-MONTH COMPARISON

Twelve-month figures provide comparable information on how crime has tracked from one 12 month period to the next.



#### Assault

During the 12 months ending March 2009, a total of 542 *assault* offences were recorded, **8% (42) more** than the previous 12 months.

#### House Break-ins

During the 12 months ending March 2009, a total of 67 *house break-ins* were recorded, **12% (9) less** than the previous 12 months.

#### Break-ins to Commercial or Other Premises

During the 12 months ending March 2009, a total of 130 *break-ins to commercial or other premises* were recorded, **6% (8) less** than the previous 12 months.

#### Motor Vehicle Theft and Related Offences

During the 12 months ending March 2009, a total of 66 *motor vehicle theft and related offences* were recorded, **8% (6) less** than the previous 12 months.

\* Source: The Northern Territory Quarterly Crime & Justice Statistics, Issue 27: March Quarter 2009



## Katherine – key findings\*

### Explanatory Notes

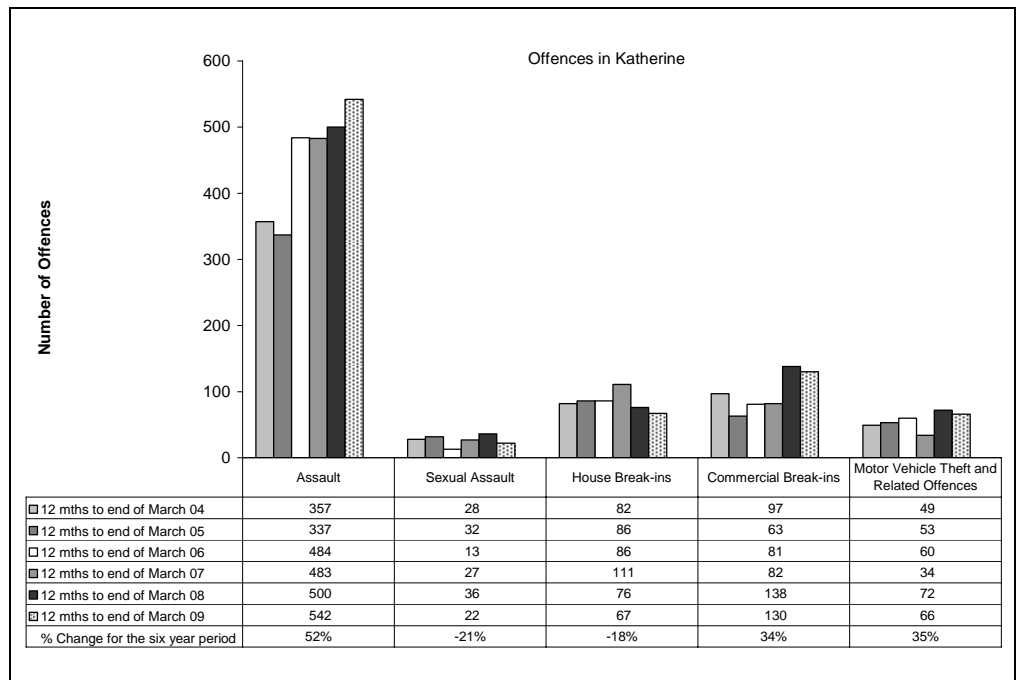
*Largely as a result of its small population, statistics in the Northern Territory can be highly volatile with large swings from one period to the next.*

*Consequently recorded crime statistics are presented over an extended period to present the current period's data within the context of any longer term trends.*

*The underlying average smooths out volatility and identifies major changes in the level of crime.*

### SIX YEAR DATA

Data presented over a six year period provides information to see how recorded crimes have tracked in the longer run.



### Assault

In late 2004, the Northern Territory Police launched their Violent Crime Reduction Strategy, with a consequential increase in the number of recorded Assault offences in 2005 and subsequent years.

These increases in Assaults largely reflect the impact of operational changes the Police have made in the reporting and recording of domestic violence related Assaults.

During the 12 months ending March 2009, there were 542 recorded *assault* offences, **52% (185) more** than in the 12 months ending March 2004.

### Sexual Assault

During the 12 months ending March 2009, there were 22 recorded *sexual assault* offences, **21% (6) less** than in the 12 months ending March 2004.

### House Break-ins

During the 12 months ending March 2009, there were 67 recorded *house break-in* offences, **18% (15) less** than in the 12 months ending March 2004.

### Commercial Break-ins

During the 12 months ending March 2009, there were 130 recorded *commercial break-in* offences, **34% (33) more** than in the 12 months ending March 2004.

### Motor Vehicle Theft and Related Offences

During the 12 months ending March 2009, there were 66 recorded *motor vehicle theft and related offences*, **35% (17) more** than in the 12 months ending March 2004.

\* Source: The Northern Territory Recorded Crime data extract for March Quarter 2009



# Recorded Crime March Quarter 2009

## Tennant Creek – key findings\*

### Explanatory Notes

*Largely as a result of its small population, statistics in the Northern Territory can be highly volatile with large swings from one period to the next.*

*Consequently recorded crime statistics are presented over an extended period to present the current period's data within the context of any longer term trends.*

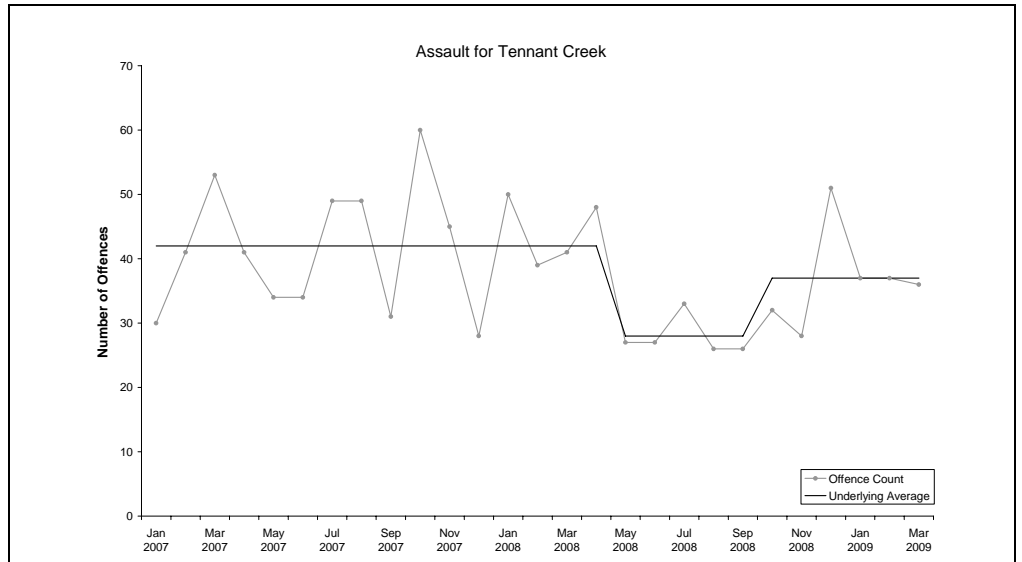
*The underlying average smooths out volatility and identifies major changes in the level of crime.*

### ASSAULT

**Underlying average** – The underlying average level of *assault* has ranged between 28 and 42 offences per month during the past nine quarters. Its current level of **37 per month** is in the middle of the range.

**Trend** – Over the past 12 months no trend was identified.

**Quarterly comparisons** – There were 110 *assault* offences recorded in the current quarter, a **decrease of 1% (1)** from the previous quarter and a decrease of 15% (20) from the same quarter the previous year.

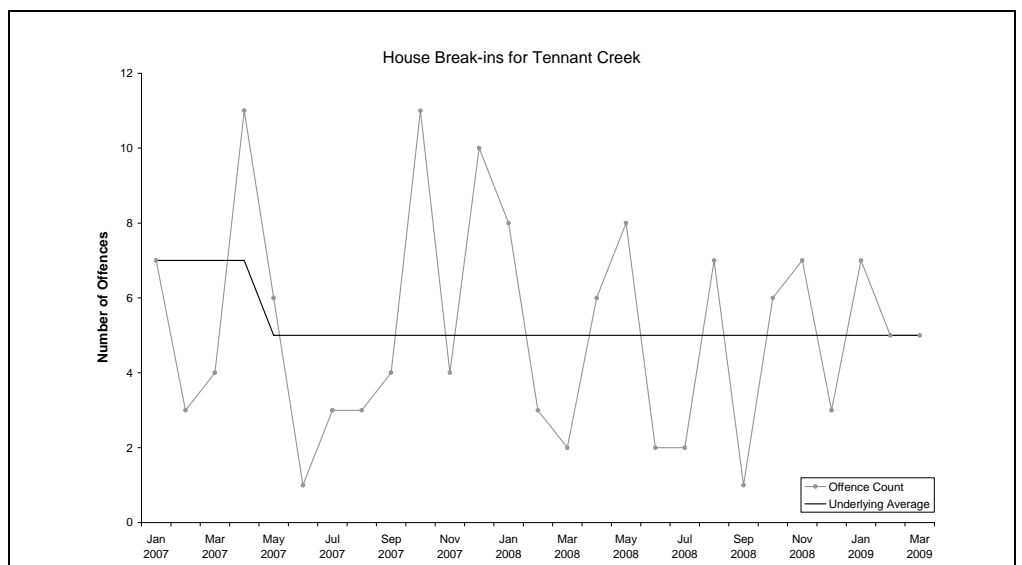


### HOUSE BREAK-INS

**Underlying average** – The underlying average level of *house break-ins* has ranged between 5 and 7 offences per month during the past nine quarters. Its current level of **5 per month** is at the lower end of the range.

**Trend** – Over the past 12 months no trend was identified.

**Quarterly comparisons** – There were 17 *house break-in* offences recorded in the current quarter, an **increase of 6% (1)** from the previous quarter and an increase of 31% (4) from the same quarter the previous year.



\* Source: The Northern Territory Quarterly Crime & Justice Statistics, Issue 27: March Quarter 2009



# Recorded Crime March Quarter 2009

## Tennant Creek – key findings\*

### Explanatory Notes

*Largely as a result of its small population, statistics in the Northern Territory can be highly volatile with large swings from one period to the next.*

*Consequently recorded crime statistics are presented over an extended period to present the current period's data within the context of any longer term trends.*

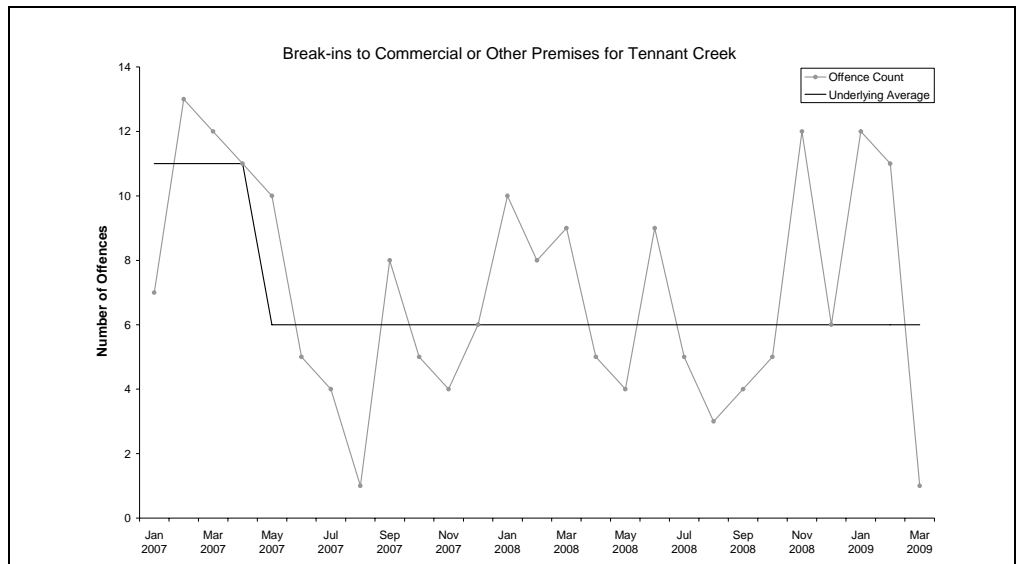
*The underlying average smooths out volatility and identifies major changes in the level of crime.*

### BREAK-INS TO COMMERCIAL OR OTHER PREMISES

**Underlying average** – The underlying average level of *break-ins to commercial or other premises* has ranged between 6 and 11 offences per month during the past nine quarters. Its current level of **6 per month** is at the lower end of the range.

**Trend** – Over the past 12 months no trend was identified.

**Quarterly comparisons** – There were 24 *break-ins to commercial or other premises* offences recorded in the current quarter, an **increase of 4% (1)** from the previous quarter, but a decrease of 11% (3) from the same quarter the previous year.



\* Source: The Northern Territory Quarterly Crime & Justice Statistics, Issue 27: March Quarter 2009



# Recorded Crime March Quarter 2009

## Tennant Creek – key findings\*

### Explanatory Notes

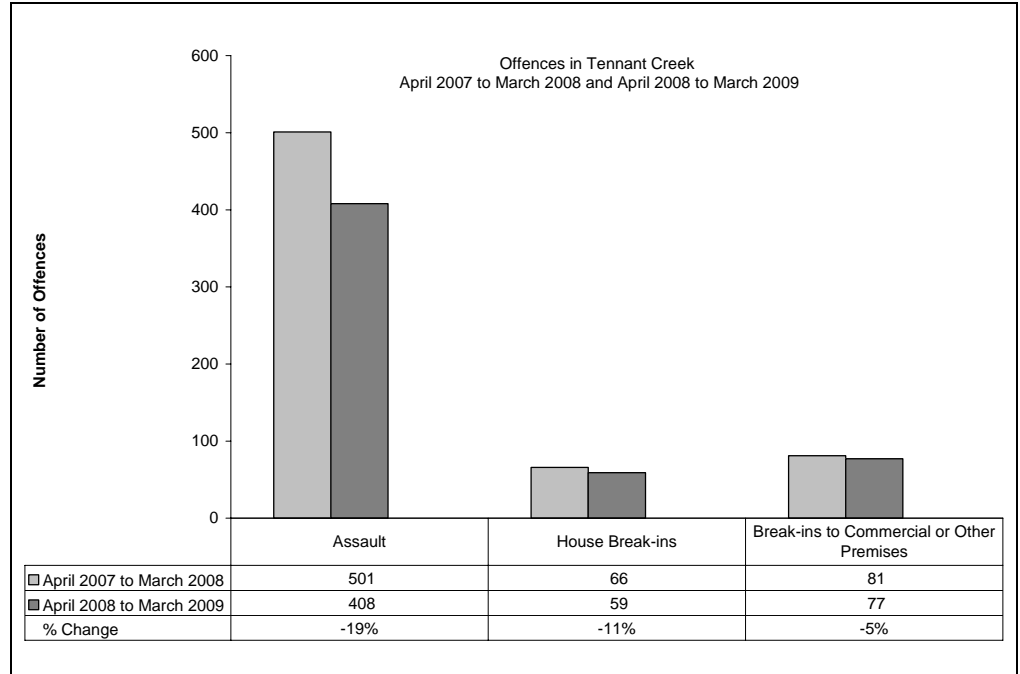
*Largely as a result of its small population, statistics in the Northern Territory can be highly volatile with large swings from one period to the next.*

*Consequently recorded crime statistics are presented over an extended period to present the current period's data within the context of any longer term trends.*

*The underlying average smooths out volatility and identifies major changes in the level of crime.*

### TWELVE-MONTH COMPARISON

Twelve-month figures provide comparable information on how crime has tracked from one 12 month period to the next.



#### Assault

During the 12 months ending March 2009, a total of 408 *assault* offences were recorded, **19% (93) less** than the previous 12 months.

#### House Break-ins

During the 12 months ending March 2009, a total of 59 *house break-ins* were recorded, **11% (7) less** than the previous 12 months.

#### Break-ins to Commercial or Other Premises

During the 12 months ending March 2009, a total of 77 *break-ins to commercial or other premises* were recorded, **5% (4) less** than the previous 12 months.

\* Source: The Northern Territory Quarterly Crime & Justice Statistics, Issue 27: March Quarter 2009



# Recorded Crime March Quarter 2009

## Tennant Creek – key findings\*

### Explanatory Notes

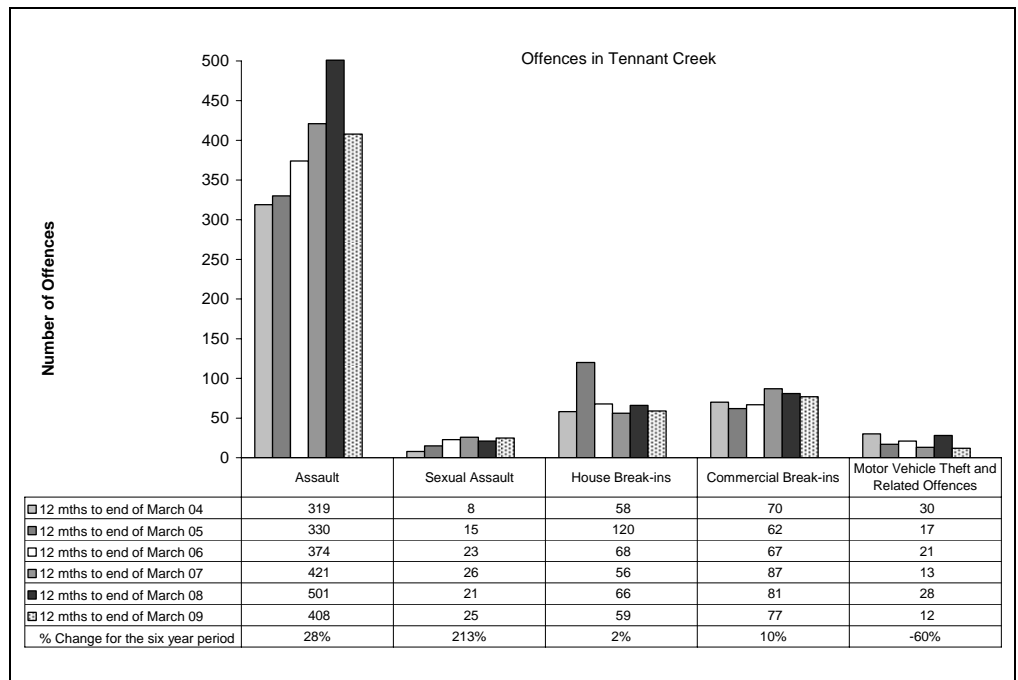
*Largely as a result of its small population, statistics in the Northern Territory can be highly volatile with large swings from one period to the next.*

*Consequently recorded crime statistics are presented over an extended period to present the current period's data within the context of any longer term trends.*

*The underlying average smooths out volatility and identifies major changes in the level of crime.*

### SIX YEAR DATA

Data presented over a six year period provides information to see how recorded crimes have tracked in the longer run.



#### Assault

In late 2004, the Northern Territory Police launched their Violent Crime Reduction Strategy, with a consequential increase in the number of recorded Assault offences in 2005 and subsequent years.

These increases in Assaults largely reflect the impact of operational changes the Police have made in the reporting and recording of domestic violence related Assaults.

During the 12 months ending March 2009, there were 408 recorded *assault* offences, **28% (89) more** than in the 12 months ending March 2004.

#### Sexual Assault

During the 12 months ending March 2009, there were 25 recorded *sexual assault* offences, **213% (17) more** than in the 12 months ending March 2004.

#### House Break-ins

During the 12 months ending March 2009, there were 59 recorded *house break-in* offences, **2% (1) more** than in the 12 months ending March 2004.

#### Commercial Break-ins

During the 12 months ending March 2009, there were 77 recorded *commercial break-in* offences, **10% (7) more** than in the 12 months ending March 2004.

#### Motor Vehicle Theft and Related Offences

During the 12 months ending March 2009, there were 12 recorded *motor vehicle theft and related offences*, **60% (18) less** than in the 12 months ending March 2004.

\* Source: The Northern Territory Recorded Crime data extract for March Quarter 2009



## Nhulunbuy – key findings\*

### Explanatory Notes

*Largely as a result of its small population, statistics in the Northern Territory can be highly volatile with large swings from one period to the next.*

*Consequently recorded crime statistics are presented over an extended period to present the current period's data within the context of any longer term trends.*

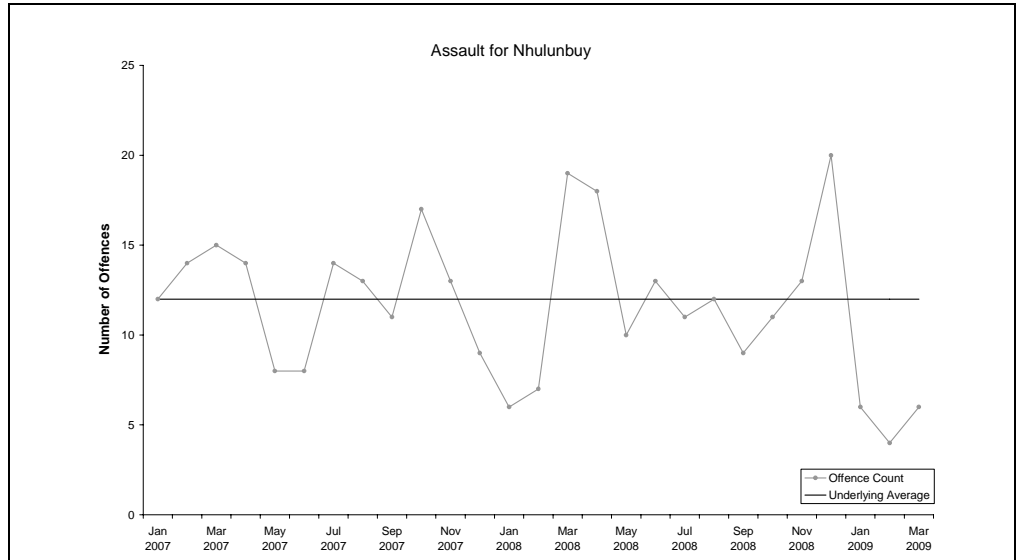
*The underlying average smooths out volatility and identifies major changes in the level of crime.*

### ASSAULT

**Underlying average** – The underlying average level of *assault* has remained stable at **12 offences** per month during the past nine quarters.

**Trend** – Over the past 12 months no trend was identified.

**Quarterly comparisons** – There were 16 *assault* offences recorded in the current quarter, a **decrease of 64% (28)** from the previous quarter and a decrease of 50% (16) from the same quarter the previous year.

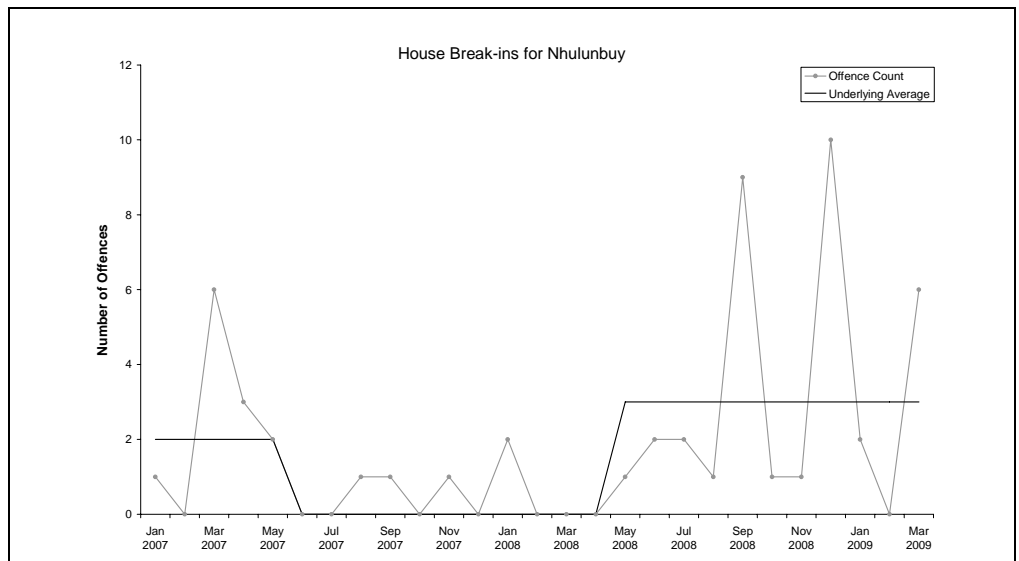


### HOUSE BREAK-INS

**Underlying average** – The underlying average level of *house break-ins* has ranged between 0 and 3 offences per month during the past nine quarters. Its current level of **3 per month** is at the higher end of the range.

**Trend** – Over the past 12 months no trend was identified.

**Quarterly comparisons** – There were 8 *house break-in* offences recorded in the current quarter, a **decrease of 4** from the previous quarter, but an increase of 6 from the same quarter the previous year.



\* Source: The Northern Territory Quarterly Crime & Justice Statistics, Issue 27: March Quarter 2009



## Nhulunbuy – key findings\*

### Explanatory Notes

*Largely as a result of its small population, statistics in the Northern Territory can be highly volatile with large swings from one period to the next.*

*Consequently recorded crime statistics are presented over an extended period to present the current period's data within the context of any longer term trends.*

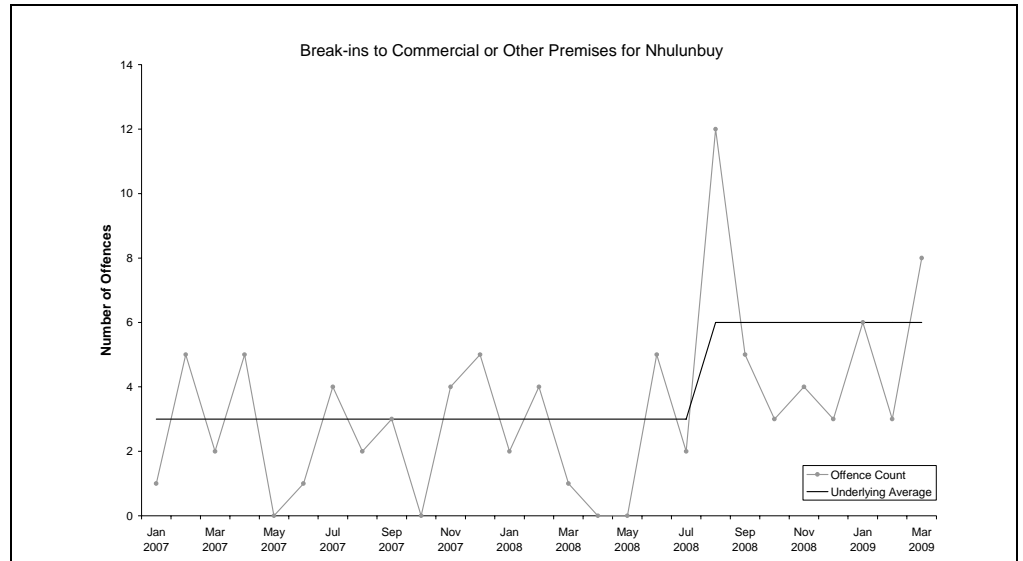
*The underlying average smooths out volatility and identifies major changes in the level of crime.*

### BREAK-INS TO COMMERCIAL OR OTHER PREMISES

**Underlying average** – The underlying average level of *break-ins to commercial or other premises* has ranged between 3 and 6 offences per month during the past nine quarters. Its current level of **6 per month** is at the higher end of the range.

**Trend** – Over the past 12 months no trend was identified.

**Quarterly comparisons** – There were 17 *break-ins to commercial or other premises* offences recorded in the current quarter, an **increase of 7** from the previous quarter and an increase of 10 from the same quarter the previous year.



\* Source: The Northern Territory Quarterly Crime & Justice Statistics, Issue 27: March Quarter 2009



### Explanatory Notes

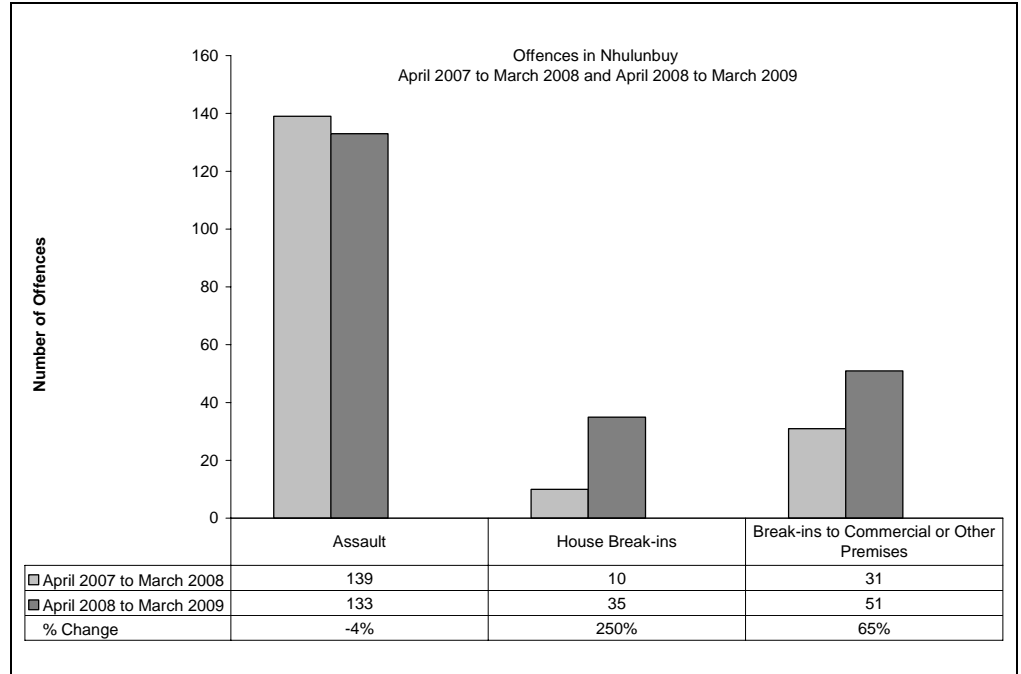
*Largely as a result of its small population, statistics in the Northern Territory can be highly volatile with large swings from one period to the next.*

*Consequently recorded crime statistics are presented over an extended period to present the current period's data within the context of any longer term trends.*

*The underlying average smooths out volatility and identifies major changes in the level of crime.*

### TWELVE-MONTH COMPARISON

Twelve-month figures provide comparable information on how crime has tracked from one 12 month period to the next.



#### Assault

During the 12 months ending March 2009, a total of 133 *assault* offences were recorded, **4% (6) less** than the previous 12 months.

#### House Break-ins

During the 12 months ending March 2009, a total of 35 *house break-ins* were recorded, **250% (25) more** than the previous 12 months.

#### Break-ins to Commercial or Other Premises

During the 12 months ending March 2009, a total of 51 *break-ins to commercial or other premises* were recorded, **65% (20) more** than the previous 12 months.

\* Source: The Northern Territory Quarterly Crime & Justice Statistics, Issue 27: March Quarter 2009



## Nhulunbuy – key findings\*

### Explanatory Notes

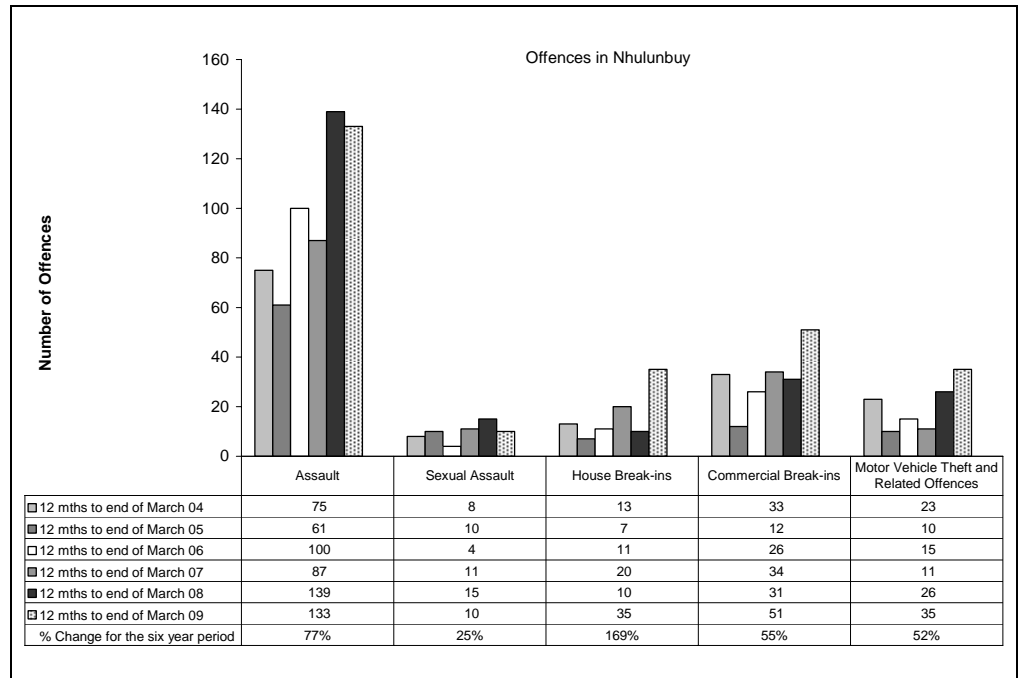
*Largely as a result of its small population, statistics in the Northern Territory can be highly volatile with large swings from one period to the next.*

*Consequently recorded crime statistics are presented over an extended period to present the current period's data within the context of any longer term trends.*

*The underlying average smooths out volatility and identifies major changes in the level of crime.*

### SIX YEAR DATA

Data presented over a six year period provides information to see how recorded crimes have tracked in the longer run.



#### Assault

In late 2004, the Northern Territory Police launched their Violent Crime Reduction Strategy, with a consequential increase in the number of recorded Assault offences in 2005 and subsequent years.

These increases in Assaults largely reflect the impact of operational changes the Police have made in the reporting and recording of domestic violence related Assaults.

During the 12 months ending March 2009, there were 133 recorded *assault* offences, **77% (58) more** than in the 12 months ending March 2004.

#### Sexual Assault

During the 12 months ending March 2009, there were 10 recorded *sexual assault* offences, **25% (2) more** than in the 12 months ending March 2004.

#### House Break-ins

During the 12 months ending March 2009, there were 35 recorded *house break-in* offences, **169% (22) more** than in the 12 months ending March 2004.

#### Commercial Break-ins

During the 12 months ending March 2009, there were 51 recorded *commercial break-in* offences, **55% (18) more** than in the 12 months ending March 2004.

#### Motor Vehicle Theft and Related Offences

During the 12 months ending March 2009, there were 35 recorded *motor vehicle theft and related offences*, **52% (12) more** than in the 12 months ending March 2004.

\* Source: The Northern Territory Recorded Crime data extract for March Quarter 2009



### Explanatory Notes

*Largely as a result of its small population, statistics in the Northern Territory can be highly volatile with large swings from one period to the next.*

*Consequently recorded crime statistics are presented over an extended period to present the current period's data within the context of any longer term trends.*

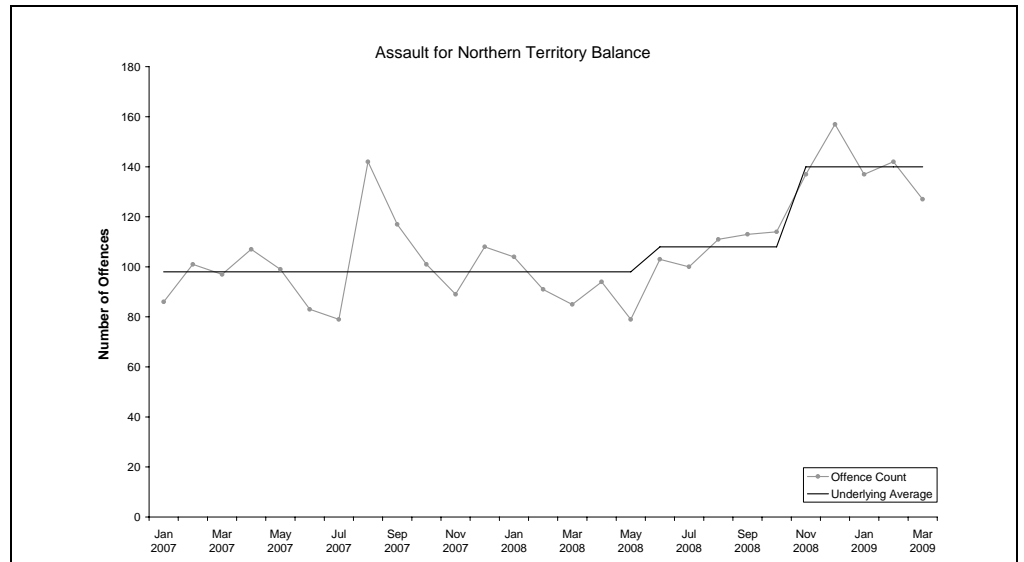
*The underlying average smooths out volatility and identifies major changes in the level of crime.*

### ASSAULT

**Underlying average** – The underlying average level of *assault* has ranged between 98 and 140 offences per month during the past nine quarters. Its current level of **140 per month** is at the higher end of the range.

**Trend** – Over the past 12 months an upward trend was identified.

**Quarterly comparisons** – There were 406 *assault* offences recorded in the current quarter, a **decrease of less than 1% (2)** from the previous quarter, but an increase of 45% (126) from the same quarter the previous year.

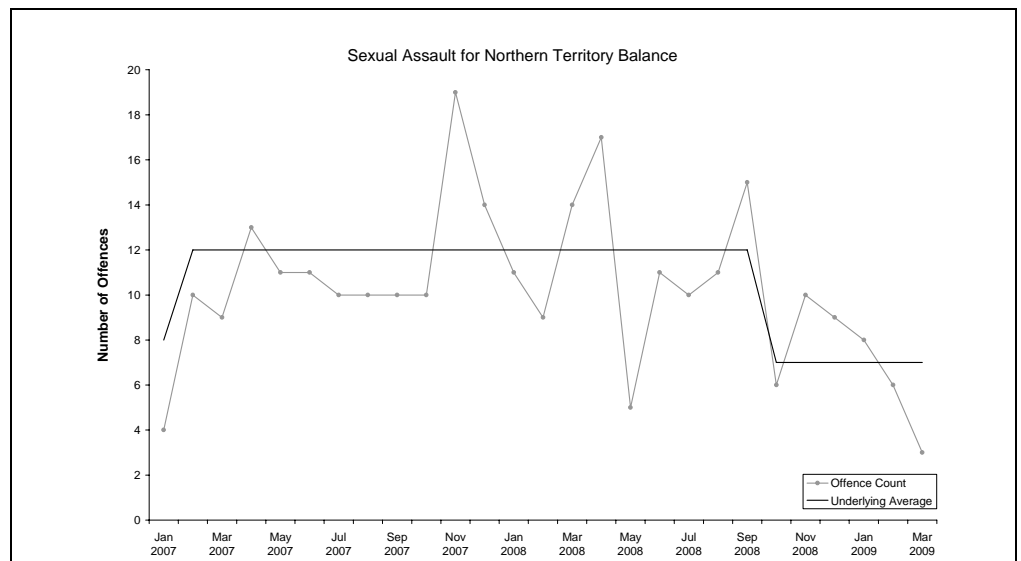


### SEXUAL ASSAULT

**Underlying average** – The underlying average level of *sexual assault* has ranged between 7 and 12 offences per month during the past nine quarters. Its current level of **7 per month** is at the lower end of the range.

**Trend** – Over the past 12 months a downward trend was identified.

**Quarterly comparisons** – There were 17 *sexual assault* offences recorded in the current quarter, a **decrease of 32% (8)** from the previous quarter and a decrease of 50% (17) from the same quarter the previous year.



\* Source: The Northern Territory Quarterly Crime & Justice Statistics, Issue 27: March Quarter 2009



# Recorded Crime March Quarter 2009

## Northern Territory Balance – key findings\*

### Explanatory Notes

*Largely as a result of its small population, statistics in the Northern Territory can be highly volatile with large swings from one period to the next.*

*Consequently recorded crime statistics are presented over an extended period to present the current period's data within the context of any longer term trends.*

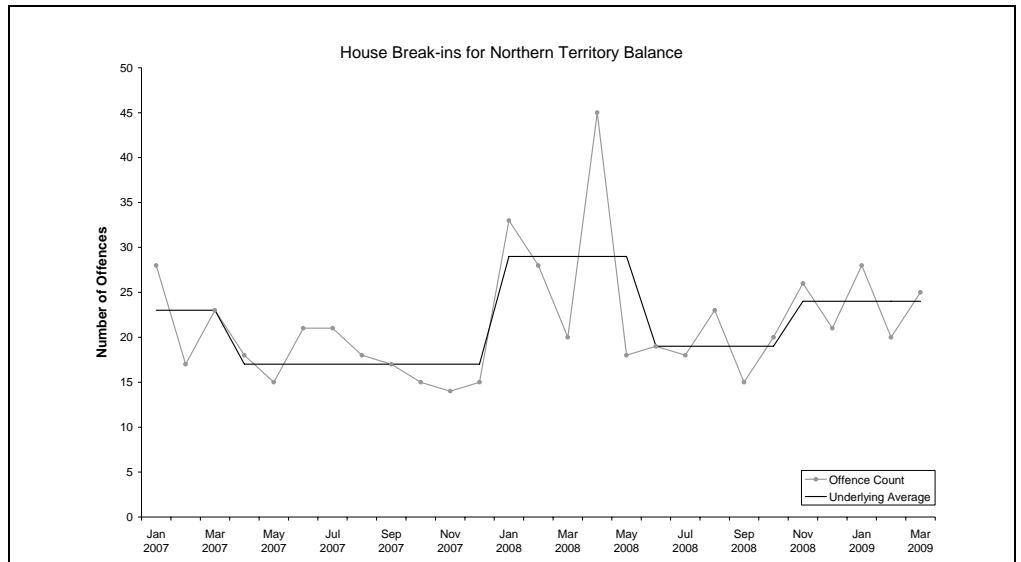
*The underlying average smooths out volatility and identifies major changes in the level of crime.*

### HOUSE BREAK-INS

**Underlying average** – The underlying average level of *house break-ins* has ranged between 17 and 29 offences per month during the past nine quarters. Its current level of **24 per month** is in the middle of the range.

**Trend** – Over the past 12 months no trend was identified.

**Quarterly comparisons** – There were 73 *house break-in* offences recorded in the current quarter, an **increase of 9% (6)** from the previous quarter, but a decrease of 10% (8) from the same quarter the previous year.

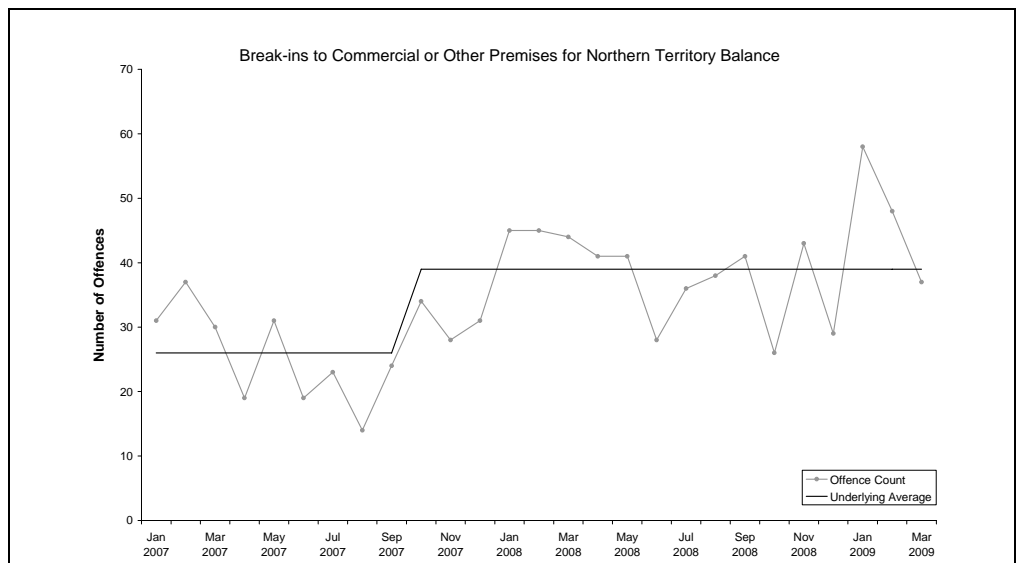


### BREAK-INS TO COMMERCIAL OR OTHER PREMISES

**Underlying average** – The underlying average level of *break-ins to commercial or other premises* has ranged between 26 and 39 offences per month during the past nine quarters. Its current level of **39 per month** is at the higher end of the range.

**Trend** – Over the past 12 months no trend was identified.

**Quarterly comparisons** – There were 143 *break-ins to commercial or other premises* offences recorded in the current quarter, an **increase of 46% (45)** from the previous quarter and an increase of 7% (9) from the same quarter the previous year.



\* Source: The Northern Territory Quarterly Crime & Justice Statistics, Issue 27: March Quarter 2009



### Explanatory Notes

*Largely as a result of its small population, statistics in the Northern Territory can be highly volatile with large swings from one period to the next.*

*Consequently recorded crime statistics are presented over an extended period to present the current period's data within the context of any longer term trends.*

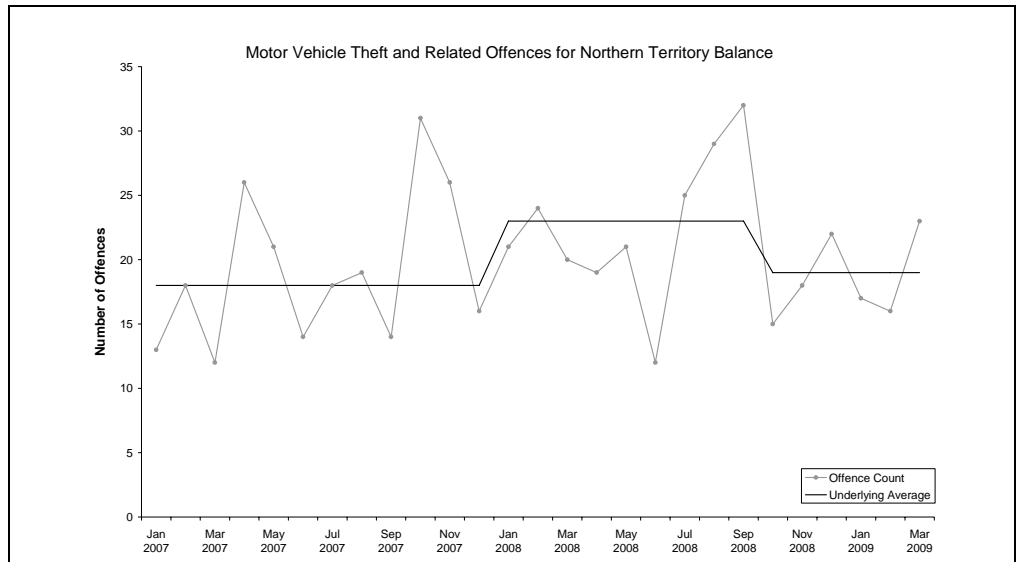
*The underlying average smooths out volatility and identifies major changes in the level of crime.*

### MOTOR VEHICLE THEFT AND RELATED OFFENCES

**Underlying average** – The underlying average level of *motor vehicle theft and related offences* has ranged between 18 and 23 offences per month during the past nine quarters. Its current level of **19 per month** is at the lower end of the range.

**Trend** – Over the past 12 months no trend was identified.

**Quarterly comparisons** – There were 56 *motor vehicle theft and related offences* recorded in the current quarter, an **increase of 2% (1)** from the previous quarter, but a decrease of 14% (9) from the same quarter the previous year.



\* Source: The Northern Territory Quarterly Crime & Justice Statistics, Issue 27: March Quarter 2009



### Explanatory Notes

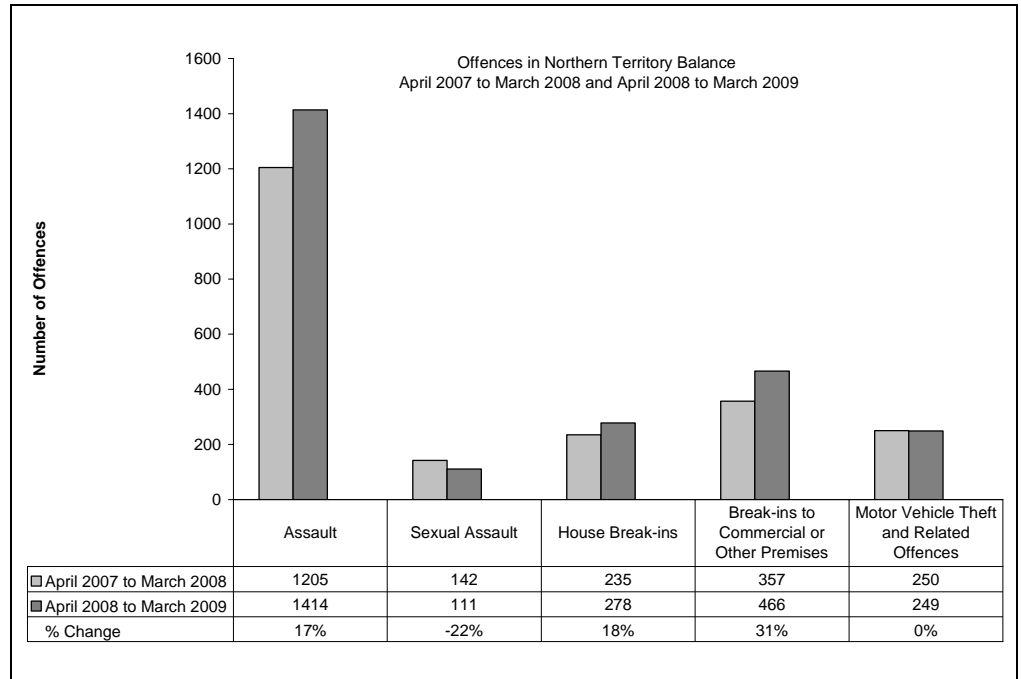
*Largely as a result of its small population, statistics in the Northern Territory can be highly volatile with large swings from one period to the next.*

*Consequently recorded crime statistics are presented over an extended period to present the current period's data within the context of any longer term trends.*

*The underlying average smooths out volatility and identifies major changes in the level of crime.*

### TWELVE-MONTH COMPARISON

Twelve-month figures provide comparable information on how crime has tracked from one 12 month period to the next.



#### Assault

During the 12 months ending March 2009, a total of 1 414 *assault* offences were recorded, **17% (209) more** than the previous 12 months.

#### Sexual Assault

During the 12 months ending March 2009, a total of 111 *sexual assault* offences were recorded, **22% (31) less** than the previous 12 months.

#### House Break-ins

During the 12 months ending March 2009, a total of 278 *house break-ins* were recorded, **18% (43) more** than the previous 12 months.

#### Break-ins to Commercial or Other Premises

During the 12 months ending March 2009, a total of 466 *break-ins to commercial or other premises* were recorded, **31% (109) more** than the previous 12 months.

#### Motor Vehicle Theft and Related Offences

During the 12 months ending March 2009, a total of 249 *motor vehicle theft and related offences* were recorded, **1 less** than the previous 12 months.

\* Source: The Northern Territory Quarterly Crime & Justice Statistics, Issue 27: March Quarter 2009



# Recorded Crime March Quarter 2009

## Northern Territory Balance – key findings\*

### Explanatory Notes

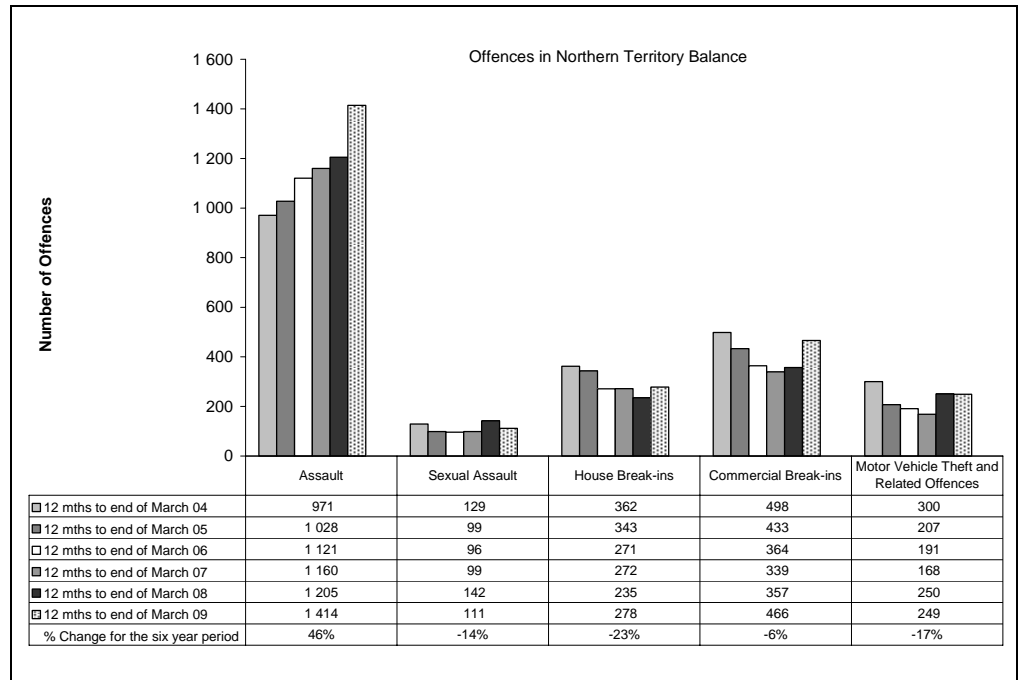
Largely as a result of its small population, statistics in the Northern Territory can be highly volatile with large swings from one period to the next.

Consequently recorded crime statistics are presented over an extended period to present the current period's data within the context of any longer term trends.

The underlying average smooths out volatility and identifies major changes in the level of crime.

### SIX YEAR DATA

Data presented over a six year period provides information to see how recorded crimes have tracked in the longer run.



### Assault

In late 2004, the Northern Territory Police launched their Violent Crime Reduction Strategy, with a consequential increase in the number of recorded Assault offences in 2005 and subsequent years.

These increases in Assaults largely reflect the impact of operational changes the Police have made in the reporting and recording of domestic violence related Assaults.

During the 12 months ending March 2009, there were 1 414 recorded *assault* offences, **46% (443) more** than in the 12 months ending March 2004.

### Sexual Assault

During the 12 months ending March 2009, there were 111 recorded *sexual assault* offences, **14% (18) less** than in the 12 months ending March 2004.

### House Break-ins

During the 12 months ending March 2009, there were 278 recorded *house break-in* offences, **23% (84) less** than in the 12 months ending March 2004.

### Commercial Break-ins

During the 12 months ending March 2009, there were 466 recorded *commercial break-in* offences, **6% (32) less** than in the 12 months ending March 2004.

### Motor Vehicle Theft and Related Offences

During the 12 months ending March 2009, there were 249 recorded *motor vehicle theft and related offences*, **17% (51) less** than in the 12 months ending March 2004.

\* Source: The Northern Territory Recorded Crime data extract for March Quarter 2009