

Recorded Crime September Quarter 2006 Northern Territory – key findings*

Explanatory Notes

Largely as a result of its small population, statistics in the Northern Territory can be highly volatile with large swings from one period to the next.

Consequently recorded crime statistics are presented over an extended two-year period to present the current period's data within the context of any longer term trends.

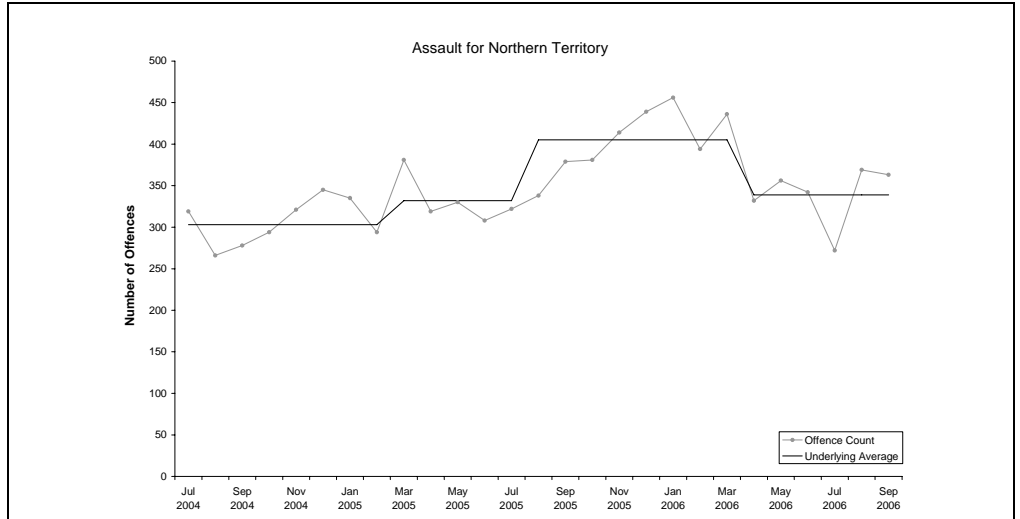
The underlying average smooths out volatility and identifies major changes in the level of crime.

ASSAULT

Underlying average – The underlying average level of recorded *assault* offences has ranged between 303 and 405 offences per month during the past nine quarters. Its current level of **339 per month** is at the middle of the range.

Trend – Over the past 12 months no trend was identified.

Quarterly comparisons – There were 1004 recorded *assault* offences in the Territory in the current quarter, a **decrease of 3% (26)** from the previous quarter and a decrease of 3% (35) from the same quarter the previous year.

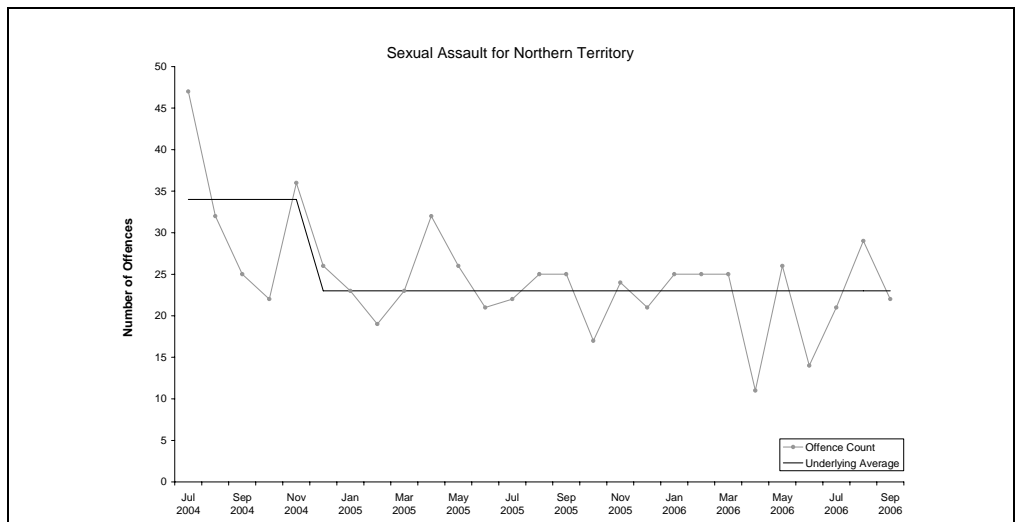


SEXUAL ASSAULT

Underlying average – The underlying average level of recorded *sexual assault* offences has ranged between 23 and 34 offences per month during the past nine quarters. Its current level of **23 per month** is at the lower end of the range.

Trend – Over the past 12 months no trend was identified.

Quarterly comparisons – There were 72 recorded *sexual assault* offences in the current quarter, an **increase of 41% (21)** from the previous quarter, but no change from the same quarter the previous year.



* Source: The Northern Territory Quarterly Crime & Justice Statistics, Issue 17: September Quarter 2006

Recorded Crime September Quarter 2006 Northern Territory – key findings*

Explanatory Notes

Largely as a result of its small population, statistics in the Northern Territory can be highly volatile with large swings from one period to the next.

Consequently recorded crime statistics are presented over an extended two-year period to present the current period's data within the context of any longer term trends.

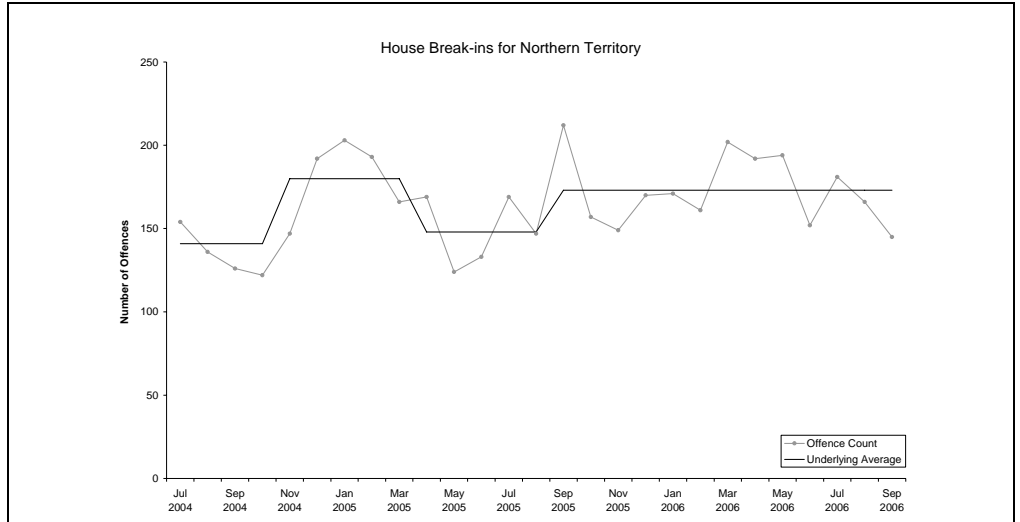
The underlying average smooths out volatility and identifies major changes in the level of crime.

HOUSE BREAK-INS

Underlying average – The underlying average level of *house break-ins* has ranged between 141 and 180 offences per month during the past nine quarters. Its current level of **173 per month** is at the higher end of the range.

Trend – Over the past 12 months no trend was identified.

Quarterly comparisons – There were 492 *house break-ins* in the current quarter, a **decrease of 9% (46)** from the previous quarter and a decrease of 7% (36) from the same quarter the previous year.

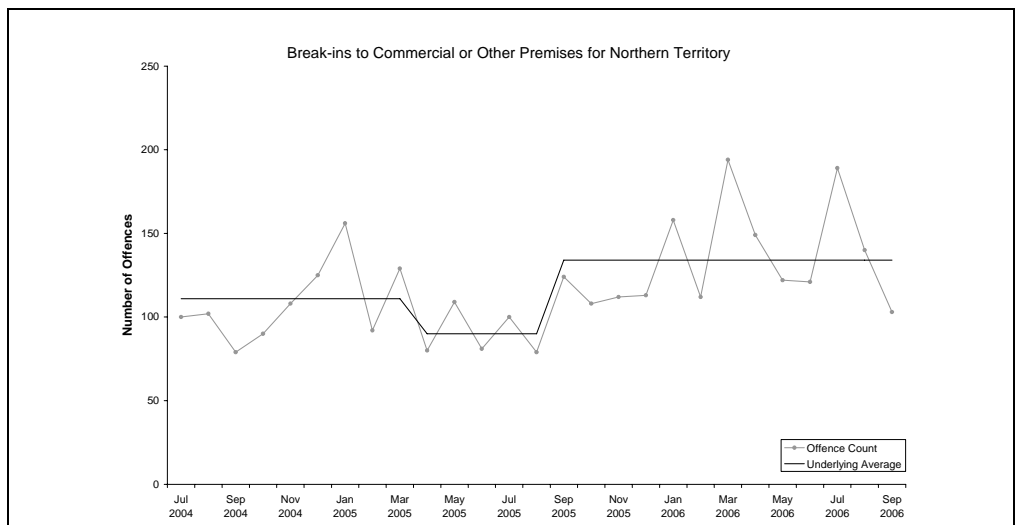


BREAK-INS TO COMMERCIAL OR OTHER PREMISES

Underlying average – The underlying average level of *break-ins to commercial or other premises* has ranged between 90 and 134 offences per month during the past nine quarters. Its current level of **134 per month** is at the higher end of the range.

Trend – Over the past 12 months no trend was identified.

Quarterly comparisons – There were 432 offences relating to *break-ins to commercial or other premises* in the current quarter, an **increase of 10% (40)** from the previous quarter and an increase of 43% (129) from the same quarter the previous year.



* Source: The Northern Territory Quarterly Crime & Justice Statistics, Issue 17: September Quarter 2006

Recorded Crime September Quarter 2006 Northern Territory – key findings*

Explanatory Notes

Largely as a result of its small population, statistics in the Northern Territory can be highly volatile with large swings from one period to the next.

Consequently recorded crime statistics are presented over an extended two-year period to present the current period's data within the context of any longer term trends.

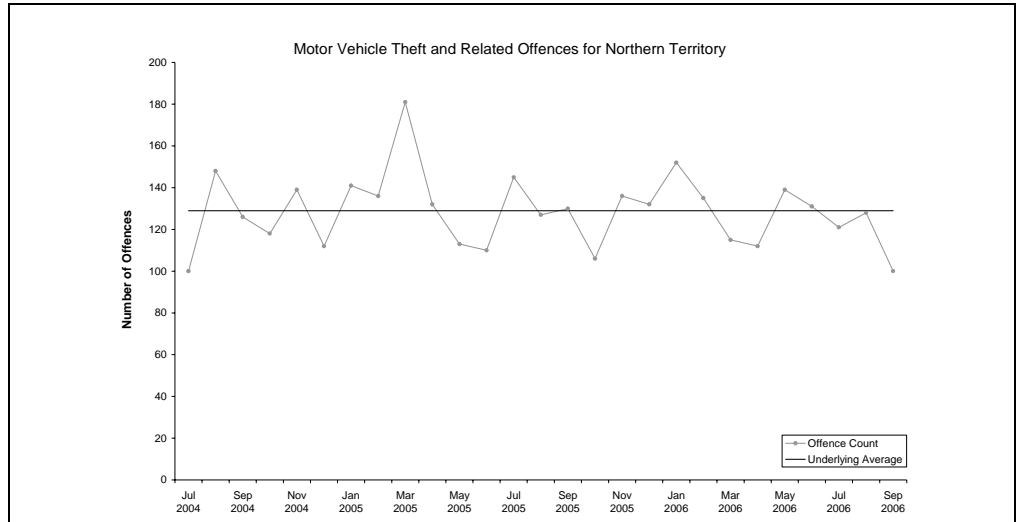
The underlying average smooths out volatility and identifies major changes in the level of crime.

MOTOR VEHICLE THEFT AND RELATED OFFENCES

Underlying average – The underlying average level of *motor vehicle theft and related offences* has remained stable at **129 offences per month** during the past nine quarters.

Trend – Over the past 12 months no trend was identified.

Quarterly comparisons – There were 349 *motor vehicle theft and related offences* in the current quarter, a **decrease of 9% (33)** from the previous quarter and a decrease of 13% (53) from the same quarter the previous year.



* Source: The Northern Territory Quarterly Crime & Justice Statistics, Issue 17: September Quarter 2006

Recorded Crime September Quarter 2006 Northern Territory – key findings*

Explanatory Notes

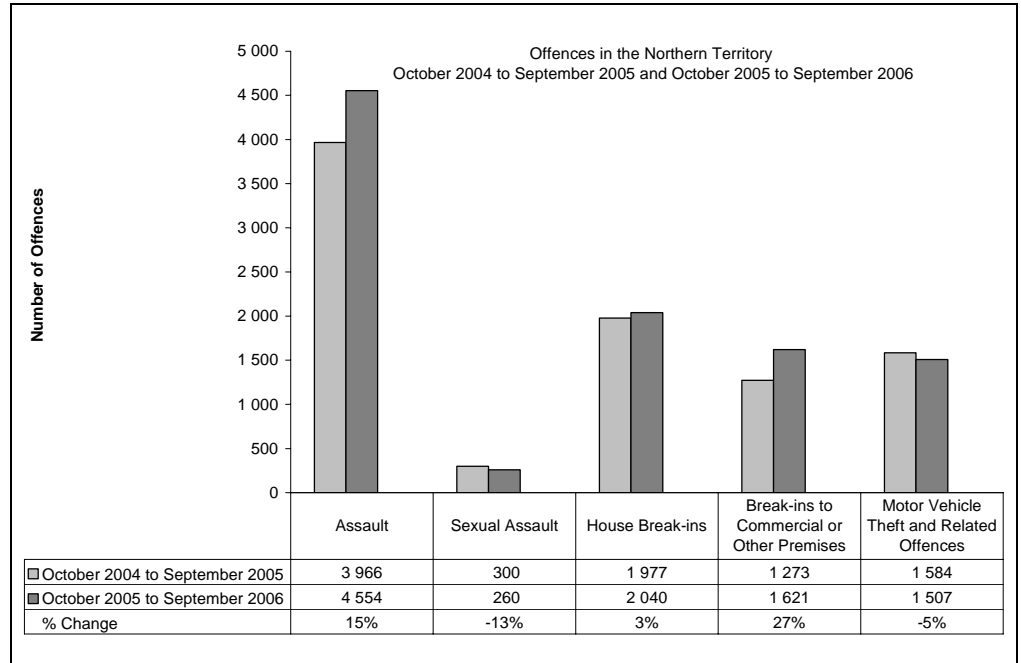
Largely as a result of its small population, statistics in the Northern Territory can be highly volatile with large swings from one period to the next.

Consequently recorded crime statistics are presented over an extended two-year period to present the current period's data within the context of any longer term trends.

The underlying average smooths out volatility and identifies major changes in the level of crime.

TWELVE-MONTH COMPARISON

Twelve-month figures provide comparable information on how crime is tracking from one 12 month period to the next.



Assault

During the 12 months to the end of September 2006 a total of 4554 *assault* offences were recorded, **15% (588) more** than the previous 12 months.

Sexual Assault

During the 12 months to the end of September 2006 a total of 260 *sexual assault* offences were recorded, **13% (40) less** than the previous 12 months.

House Break-ins

During the 12 months to the end of September 2006 a total of 2040 *house break-ins* were recorded, **3% (63) more** than the previous 12 months.

Break-ins to Commercial or Other Premises

During the 12 months to the end of September 2006 a total of 1621 *break-ins to commercial or other premises* were recorded, **27% (348) more** than the previous 12 months.

Motor Vehicle Theft and Related Offences

During the 12 months to the end of September 2006 a total of 1507 *motor vehicle theft and related offences* were recorded, **5% (77) less** than the previous 12 months.

* Source: The Northern Territory Quarterly Crime & Justice Statistics, Issue 17: September Quarter 2006

Recorded Crime September Quarter 2006

Darwin – key findings*

Explanatory Notes

Largely as a result of its small population, statistics in the Northern Territory can be highly volatile with large swings from one period to the next.

Consequently recorded crime statistics are presented over an extended two-year period to present the current period's data within the context of any longer term trends.

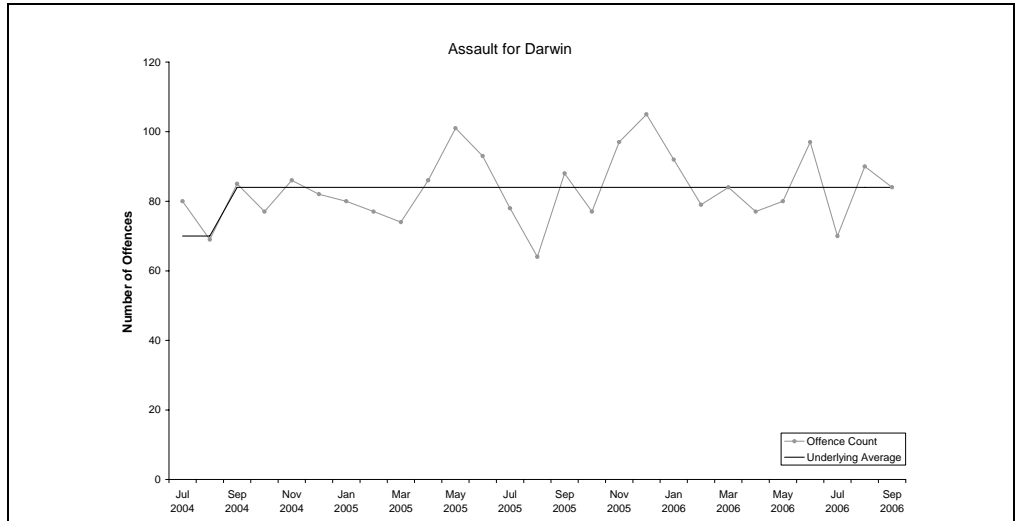
The underlying average smooths out volatility and identifies major changes in the level of crime.

ASSAULT

Underlying average – The underlying average level of recorded *assault* offences has ranged between 70 and 84 offences per month during the past nine quarters. Its current level of **84 per month** is at the higher end of the range.

Trend – Over the past 12 months no trend was identified.

Quarterly comparisons – There were 244 recorded *assault* offences in Darwin in the current quarter, a **decrease of 4% (10)** from the previous quarter, but an increase of 6% (14) from the same quarter the previous year.

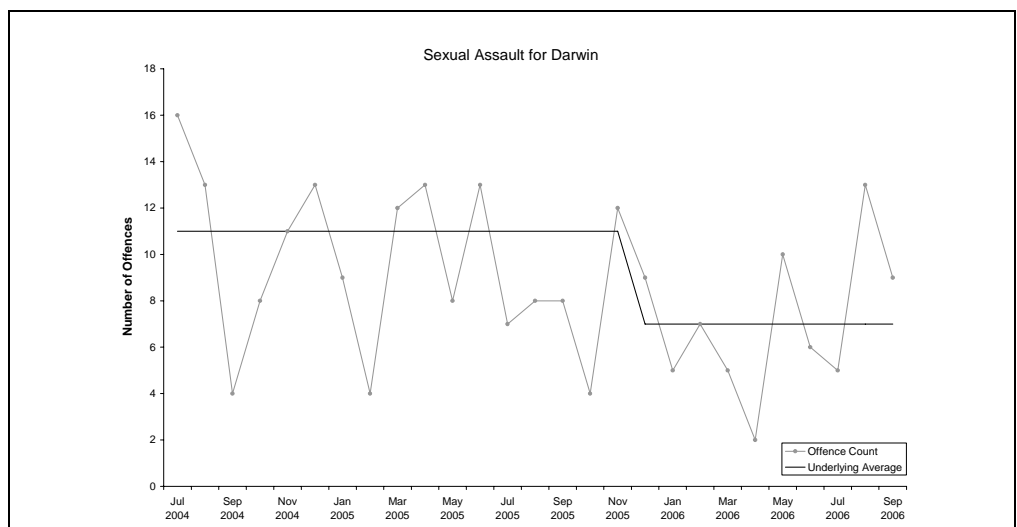


SEXUAL ASSAULT

Underlying average – The underlying average level of *sexual assault* offences has ranged between 7 and 11 offences per month during the past nine quarters. Its current level of **7 offences per month** is at the lower end of the range.

Trend – Over the past 12 months no trend was identified.

Quarterly comparisons – There were 27 recorded *sexual assault* offences in the current quarter, an **increase of 50% (9)** from the previous quarter and an increase of 17% (4) from the same quarter the previous year.



* Source: The Northern Territory Quarterly Crime & Justice Statistics, Issue 17: September Quarter 2006

Recorded Crime September Quarter 2006

Darwin – key findings*

Explanatory Notes

Largely as a result of its small population, statistics in the Northern Territory can be highly volatile with large swings from one period to the next.

Consequently recorded crime statistics are presented over an extended two-year period to present the current period's data within the context of any longer term trends.

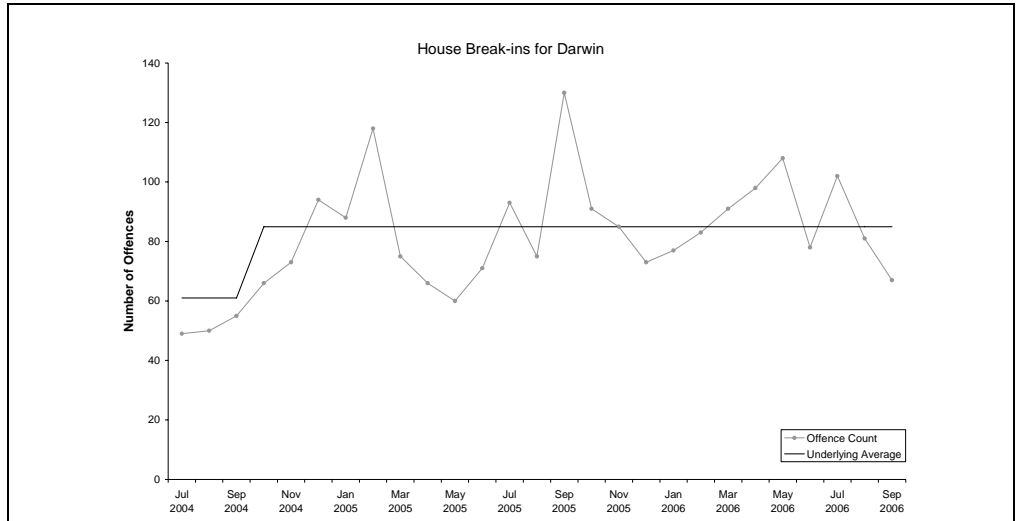
The underlying average smooths out volatility and identifies major changes in the level of crime.

HOUSE BREAK-INS

Underlying average – The underlying average level of *house break-ins* has ranged between 61 and 85 offences per month during the past nine quarters. Its current level of **85 per month** is at the higher end of the range.

Trend – Over the past 12 months no trend was identified.

Quarterly comparisons – There were 250 *house break-ins* in the current quarter, a **decrease of 12% (34)** from the previous quarter and a decrease of 16% (48) from the same quarter the previous year.

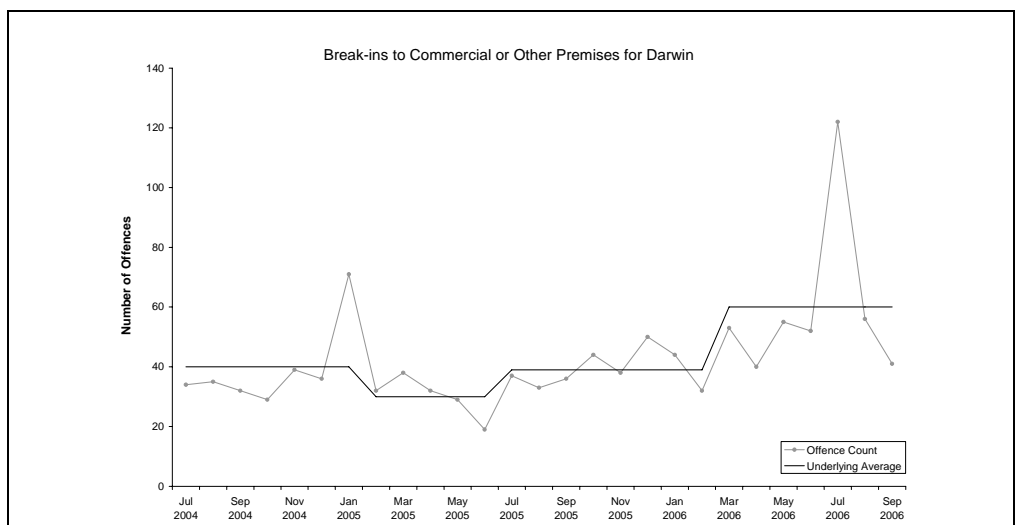


BREAK-INS TO COMMERCIAL OR OTHER PREMISES

Underlying average – The underlying average level of *break-ins to commercial or other premises* has ranged between 30 and 60 offences per month during the past nine quarters. Its current level of **60 per month** is at the higher end of the range.

Trend – Over the past 12 months no trend was identified.

Quarterly comparisons – There were 219 offences relating to *break-ins to commercial or other premises* in the current quarter, an **increase of 49% (72)** from the previous quarter and an increase of 107% (113) from the same quarter the previous year.



* Source: The Northern Territory Quarterly Crime & Justice Statistics, Issue 17: September Quarter 2006

Recorded Crime September Quarter 2006

Darwin – key findings*

Explanatory Notes

Largely as a result of its small population, statistics in the Northern Territory can be highly volatile with large swings from one period to the next.

Consequently recorded crime statistics are presented over an extended two-year period to present the current period's data within the context of any longer term trends.

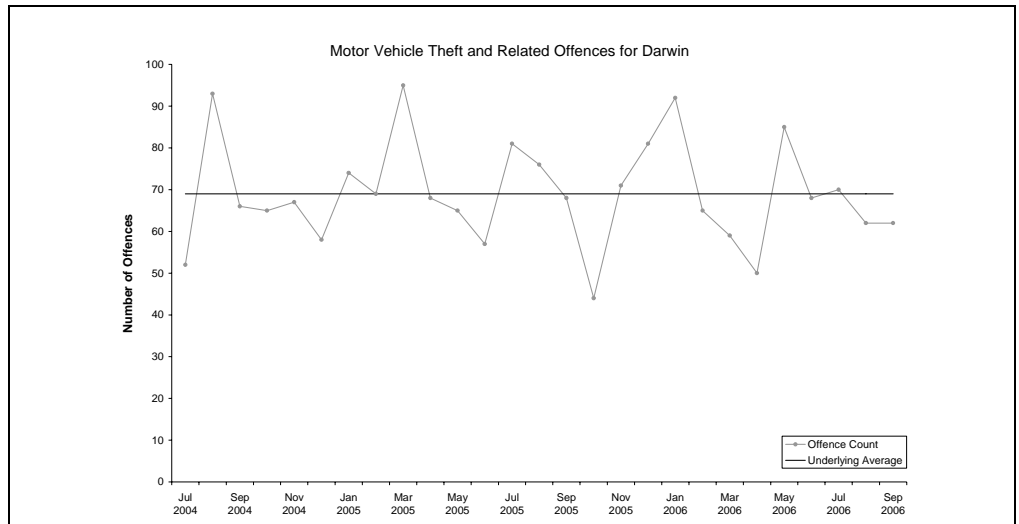
The underlying average smooths out volatility and identifies major changes in the level of crime.

MOTOR VEHICLE THEFT AND RELATED OFFENCES

Underlying average – The underlying average level of *motor vehicle theft and related offences* has remained stable at **69 per month** during the past nine quarters.

Trend – Over the past 12 months no trend was identified.

Quarterly comparisons – There were 194 *motor vehicle theft and related offences* recorded in the current quarter, a **decrease of 4% (9)** from the previous quarter and a decrease of 14% (31) from the same quarter the previous year.



* Source: The Northern Territory Quarterly Crime & Justice Statistics, Issue 17: September Quarter 2006

Recorded Crime September Quarter 2006

Darwin – key findings*

Explanatory Notes

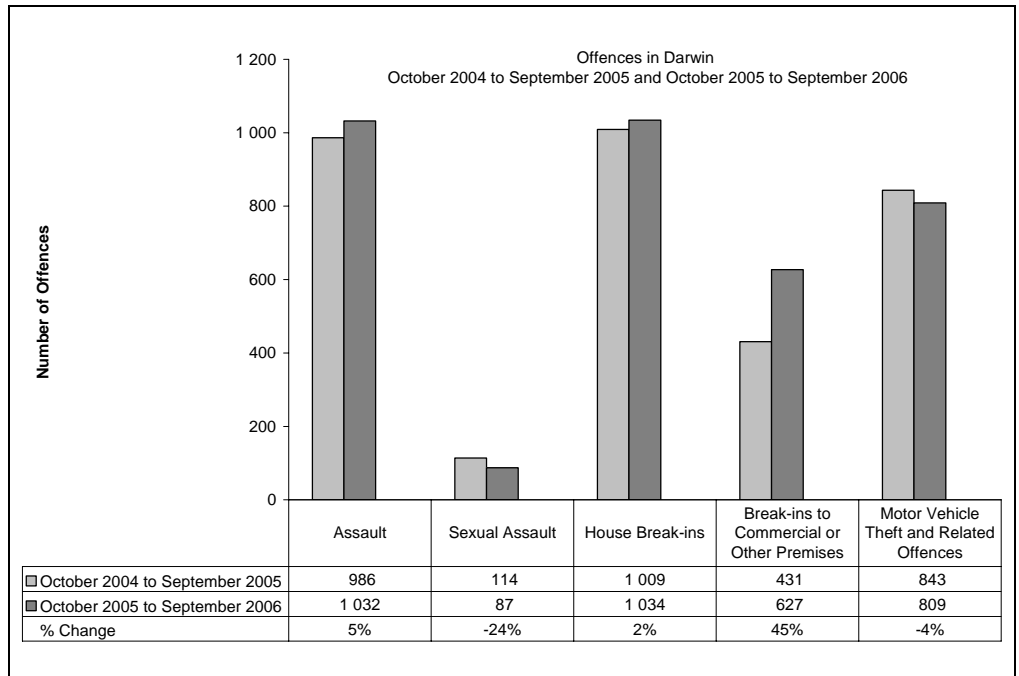
Largely as a result of its small population, statistics in the Northern Territory can be highly volatile with large swings from one period to the next.

Consequently recorded crime statistics are presented over an extended two-year period to present the current period's data within the context of any longer term trends.

The underlying average smooths out volatility and identifies major changes in the level of crime.

TWELVE-MONTH COMPARISON

Twelve-month figures provide comparable information on how crime is tracking from one 12 month period to the next.



Assault

During the 12 months to the end of September 2006 a total of 1032 *assault* offences were recorded, **5% (46) more** than the previous 12 months.

Sexual Assault

During the 12 months to the end of September 2006 a total of 87 *sexual assault* offences were recorded, **24% (27) less** than the previous 12 months.

House Break-ins

During the 12 months to the end of September 2006 a total of 1034 *house break-ins* were recorded, **2% (25) more** than the previous 12 months.

Break-ins to Commercial or Other Premises

During the 12 months to the end of September 2006 a total of 627 *break-ins to commercial or other premises* were recorded, **45% (196) more** than the previous 12 months.

Motor Vehicle Theft and Related Offences

During the 12 months to the end of September 2006 a total of 809 *motor vehicle theft and related offences* were recorded, **4% (34) less** than the previous 12 months.

* Source: The Northern Territory Quarterly Crime & Justice Statistics, Issue 17: September Quarter 2006

Recorded Crime September Quarter 2006

Palmerston – key findings*

Explanatory Notes

Largely as a result of its small population, statistics in the Northern Territory can be highly volatile with large swings from one period to the next.

Consequently recorded crime statistics are presented over an extended two-year period to present the current period's data within the context of any longer term trends.

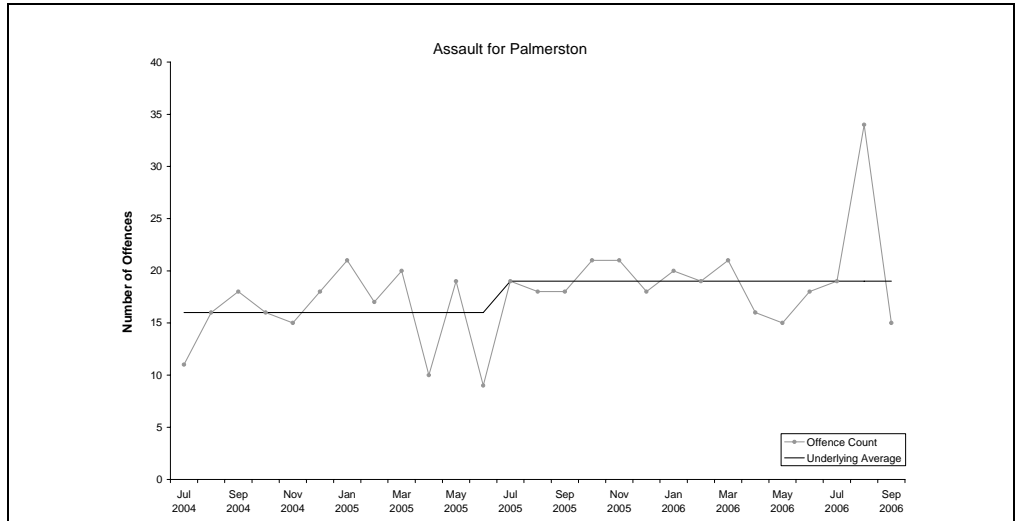
The underlying average smooths out volatility and identifies major changes in the level of crime.

ASSAULT

Underlying average – The underlying average level of recorded *assault* offences has ranged between 16 and 19 offences per month during the past nine quarters. Its current level of **19 per month** is at the higher end of the range.

Trend – Over the past 12 months no trend was identified.

Quarterly comparisons – There were 68 recorded *assault* offences in Palmerston in the current quarter, an **increase of 39% (19)** from the previous quarter and an increase of 24% (13) from the same quarter the previous year.

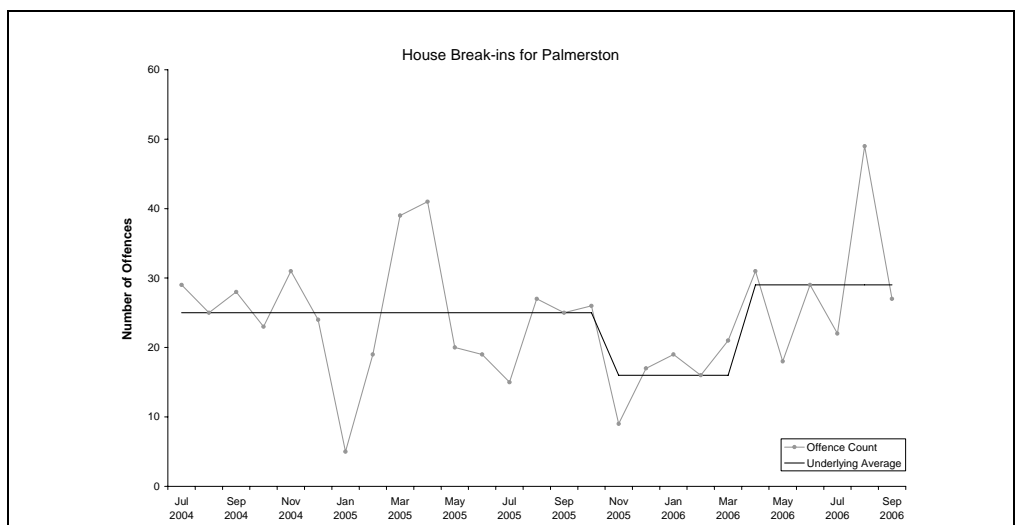


HOUSE BREAK-INS

Underlying average – The underlying average level of *house break-ins* has ranged between 16 and 29 offences per month during the past nine quarters. Its current level of **29 per month** is at the higher end of the range.

Trend – Over the past 12 months an upward trend was identified.

Quarterly comparisons – There were 98 *house break-ins* in the current quarter, an **increase of 26% (20)** from the previous quarter and an increase of 46% (31) from the same quarter the previous year.



* Source: The Northern Territory Quarterly Crime & Justice Statistics, Issue 17: September Quarter 2006

Recorded Crime September Quarter 2006

Palmerston – key findings*

Explanatory Notes

Largely as a result of its small population, statistics in the Northern Territory can be highly volatile with large swings from one period to the next.

Consequently recorded crime statistics are presented over an extended two-year period to present the current period's data within the context of any longer term trends.

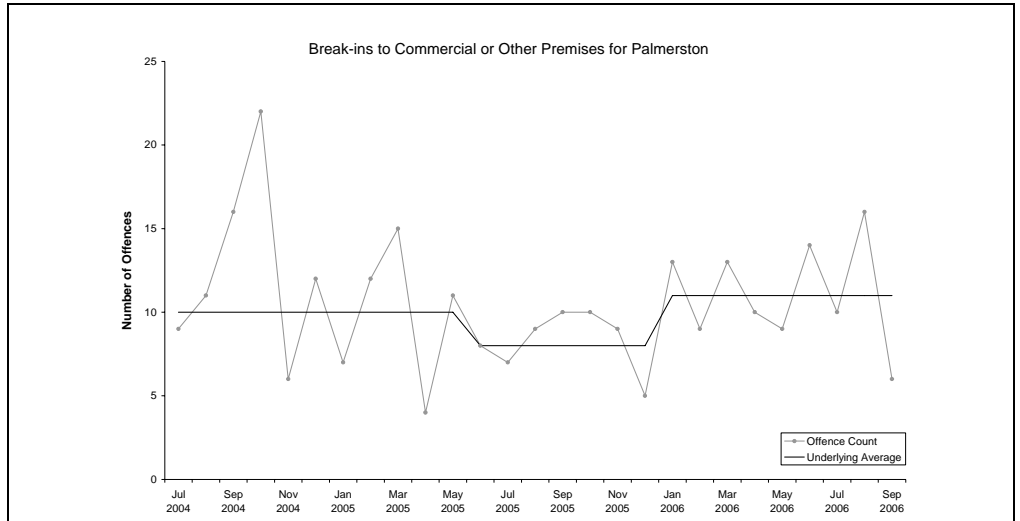
The underlying average smooths out volatility and identifies major changes in the level of crime.

BREAK-INS TO COMMERCIAL OR OTHER PREMISES

Underlying average – The underlying average level of *break-ins to commercial or other premises* has ranged between 8 and 11 offences per month during the past nine quarters. Its current level of **11 per month** is at the higher end of the range.

Trend – Over the past 12 months no trend was identified.

Quarterly comparisons – There were 32 *break-ins to commercial or other premises* in the current quarter, a **decrease of 3% (1)** from the previous quarter, but an increase of 23% (6) from the same quarter the previous year.

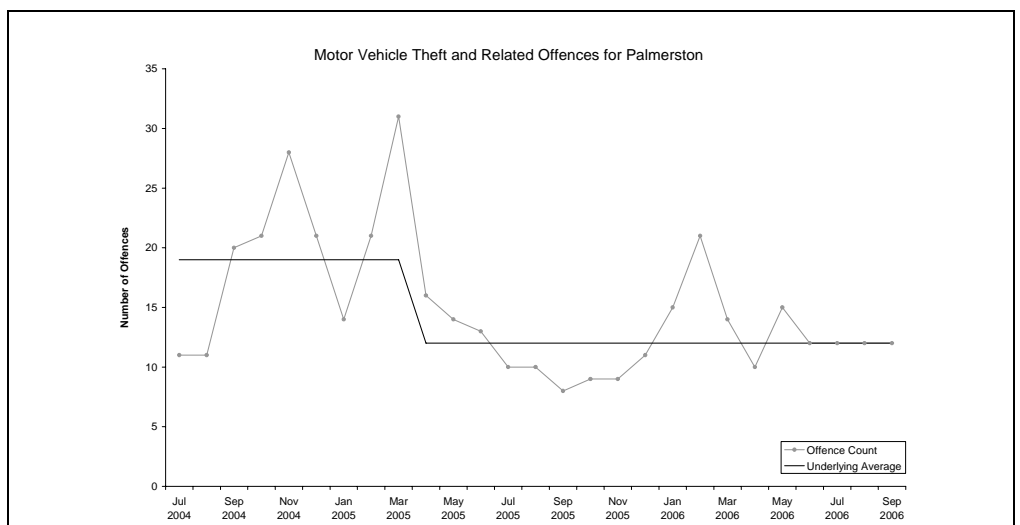


MOTOR VEHICLE THEFT AND RELATED OFFENCES

Underlying average – The underlying average level of *motor vehicle theft and related offences* has ranged between 12 and 19 offences per month during the past nine quarters. Its current level of **12 per month** is at the lower end of the range.

Trend – Over the past 12 months no trend was identified.

Quarterly comparisons – There were 36 recorded *motor vehicle theft and related offences* in the current quarter, a **decrease of 3% (1)** from the previous quarter, but an increase of 29% (8) from the same quarter the previous year.



* Source: The Northern Territory Quarterly Crime & Justice Statistics, Issue 17: September Quarter 2006

Recorded Crime September Quarter 2006

Palmerston – key findings*

Explanatory Notes

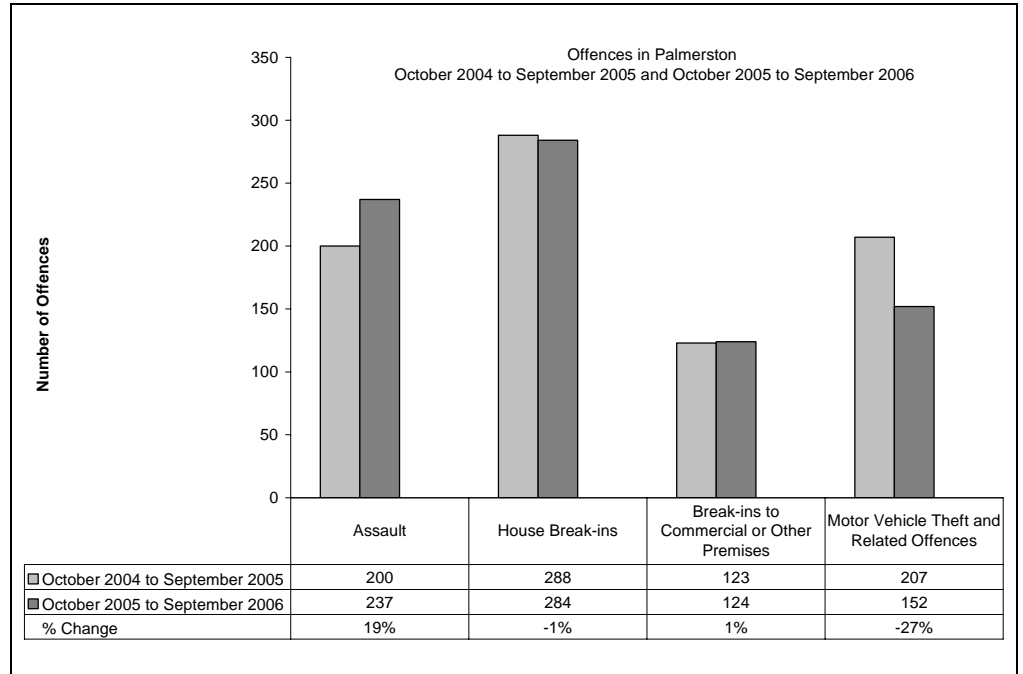
Largely as a result of its small population, statistics in the Northern Territory can be highly volatile with large swings from one period to the next.

Consequently recorded crime statistics are presented over an extended two-year period to present the current period's data within the context of any longer term trends.

The underlying average smooths out volatility and identifies major changes in the level of crime.

TWELVE-MONTH COMPARISON

Twelve-month figures provide comparable information on how crime is tracking from one 12 month period to the next.



Assault

During the 12 months to the end of September 2006 a total of 237 *assault* offences were recorded, **19% (37) more** than the previous 12 months.

House Break-ins

During the 12 months to the end of September 2006 a total of 284 *house break-ins* were recorded, **1% (4) less** than the previous 12 months.

Break-ins to Commercial or Other Premises

During the 12 months to the end of September 2006 a total of 124 *break-ins to commercial or other premises* were recorded, **1% (1) more** than the previous 12 months.

Motor Vehicle Theft and Related Offences

During the 12 months to the end of September 2006 a total of 152 *motor vehicle theft and related offences* were recorded, **27% (55) less** than the previous 12 months.

* Source: The Northern Territory Quarterly Crime & Justice Statistics, Issue 17: September Quarter 2006

Recorded Crime September Quarter 2006

Alice Springs – key findings*

Explanatory Notes

Largely as a result of its small population, statistics in the Northern Territory can be highly volatile with large swings from one period to the next.

Consequently recorded crime statistics are presented over an extended two-year period to present the current period's data within the context of any longer term trends.

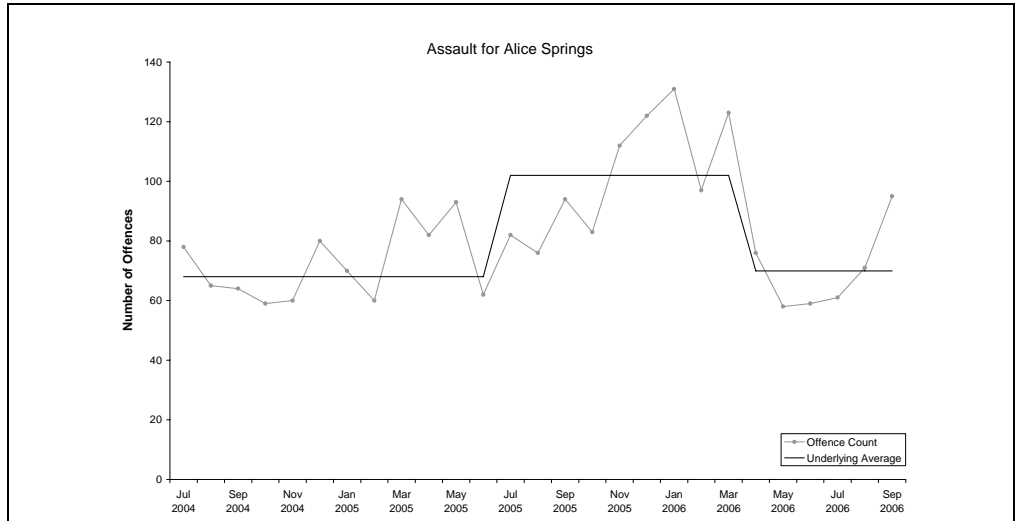
The underlying average smooths out volatility and identifies major changes in the level of crime.

ASSAULT

Underlying average – The underlying average level of recorded *assault* offences has ranged between 68 and 102 offences during the past nine quarters. Its current level of **70 per month** is at the lower end of the range.

Trend – Over the past 12 months no trend was identified.

Quarterly comparisons – There were 227 recorded *assault* offences in Alice Springs in the current quarter, an **increase of 18% (34)** from the previous quarter, but a decrease of 10% (25) from the same quarter the previous year.

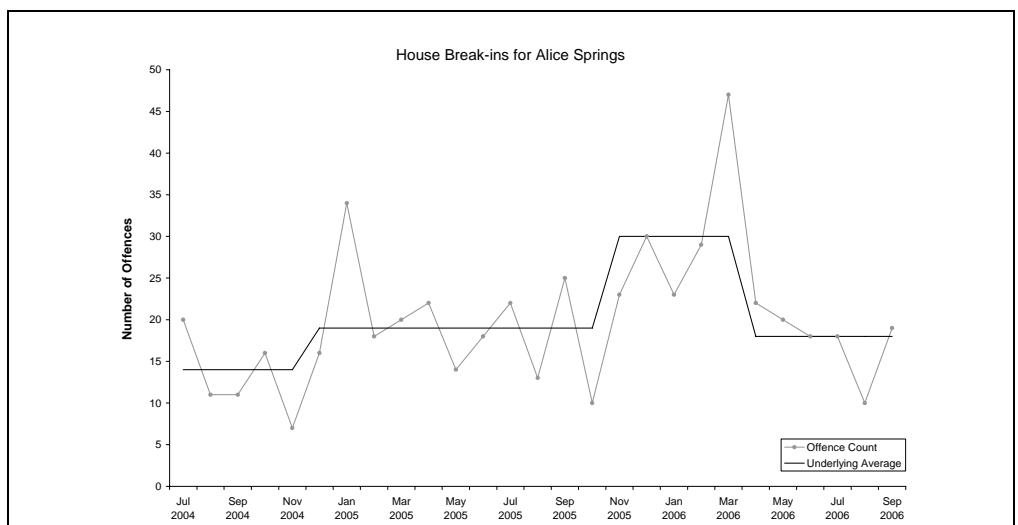


HOUSE BREAK-INS

Underlying average – The underlying average level of *house break-ins* has ranged between 14 and 30 offences per month during the past nine quarters. Its current level of **18 per month** is at the lower end of the range.

Trend – Over the past 12 months no trend was identified.

Quarterly comparisons – There were 47 *house break-ins* in the current quarter, a **decrease of 22% (13)** from both the previous quarter and the same quarter the previous year.



* Source: The Northern Territory Quarterly Crime & Justice Statistics, Issue 17: September Quarter 2006

Recorded Crime September Quarter 2006

Alice Springs – key findings*

Explanatory Notes

Largely as a result of its small population, statistics in the Northern Territory can be highly volatile with large swings from one period to the next.

Consequently recorded crime statistics are presented over an extended two-year period to present the current period's data within the context of any longer term trends.

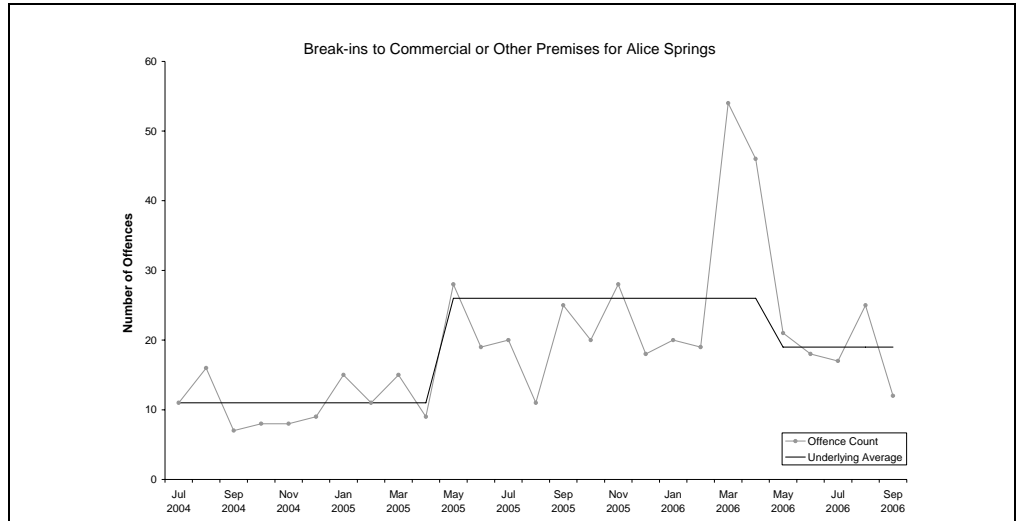
The underlying average smooths out volatility and identifies major changes in the level of crime.

BREAK-INS TO COMMERCIAL OR OTHER PREMISES

Underlying average – The underlying average level of *break-ins to commercial or other premises* has ranged between 11 and 26 offences per month during the past nine quarters. Its current level of **19 per month** is in the middle of the range.

Trend – Over the past 12 months no trend was identified.

Quarterly comparisons – There were 54 *break-ins to commercial or other premises* in the current quarter, a **decrease of 36% (31)** from the previous quarter and a decrease of 4% (2) from the same quarter the previous year.

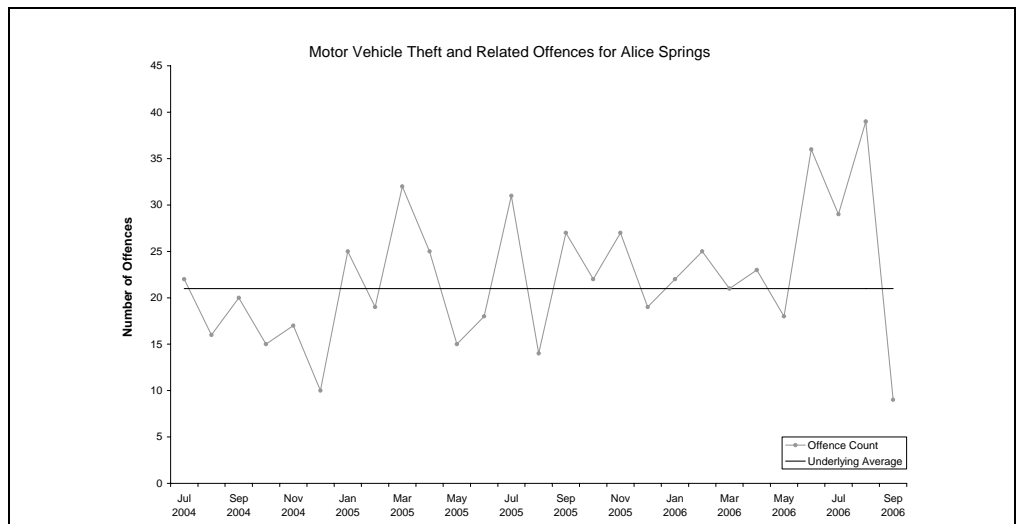


MOTOR VEHICLE THEFT AND RELATED OFFENCES

Underlying average – The underlying average level of recorded *motor vehicle theft and related offences* has remained stable at **21 offences per month** during the past nine quarters.

Trend – Over the past 12 months no trend was identified.

Quarterly comparisons – There were 77 *motor vehicle theft and related offences* in the current quarter, **no change** from the previous quarter, but an increase of 7% (5) from the same quarter the previous year.



* Source: The Northern Territory Quarterly Crime & Justice Statistics, Issue 17: September Quarter 2006

Recorded Crime September Quarter 2006

Alice Springs – key findings*

Explanatory Notes

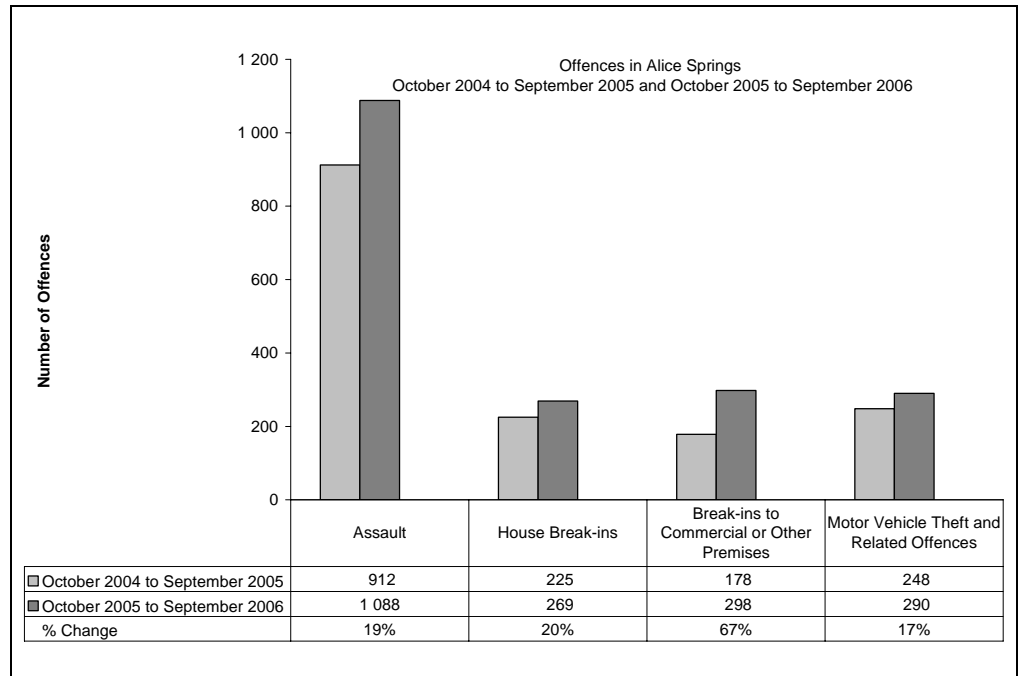
Largely as a result of its small population, statistics in the Northern Territory can be highly volatile with large swings from one period to the next.

Consequently recorded crime statistics are presented over an extended two-year period to present the current period's data within the context of any longer term trends.

The underlying average smooths out volatility and identifies major changes in the level of crime.

TWELVE-MONTH COMPARISON

Twelve-month figures provide comparable information on how crime is tracking from one 12 month period to the next.



Assault

During the 12 months to the end of September 2006 a total of 1088 *assault* offences were recorded, **19% (176) more** than the previous 12 months.

House Break-ins

During the 12 months to the end of September 2006 a total of 269 *house break-ins* were recorded, **20% (44) more** than the previous 12 months.

Break-ins to Commercial or Other Premises

During the 12 months to the end of September 2006 a total of 298 *break-ins to commercial or other premises* were recorded, **67% (120) more** than the previous 12 months.

Motor Vehicle Theft and Related Offences

During the 12 months to the end of September 2006 a total of 290 *motor vehicle theft and related offences* were recorded, **17% (42) more** than the previous 12 months.

* Source: The Northern Territory Quarterly Crime & Justice Statistics, Issue 17: September Quarter 2006

Recorded Crime September Quarter 2006

Katherine – key findings*

Explanatory Notes

Largely as a result of its small population, statistics in the Northern Territory can be highly volatile with large swings from one period to the next.

Consequently recorded crime statistics are presented over an extended two-year period to present the current period's data within the context of any longer term trends.

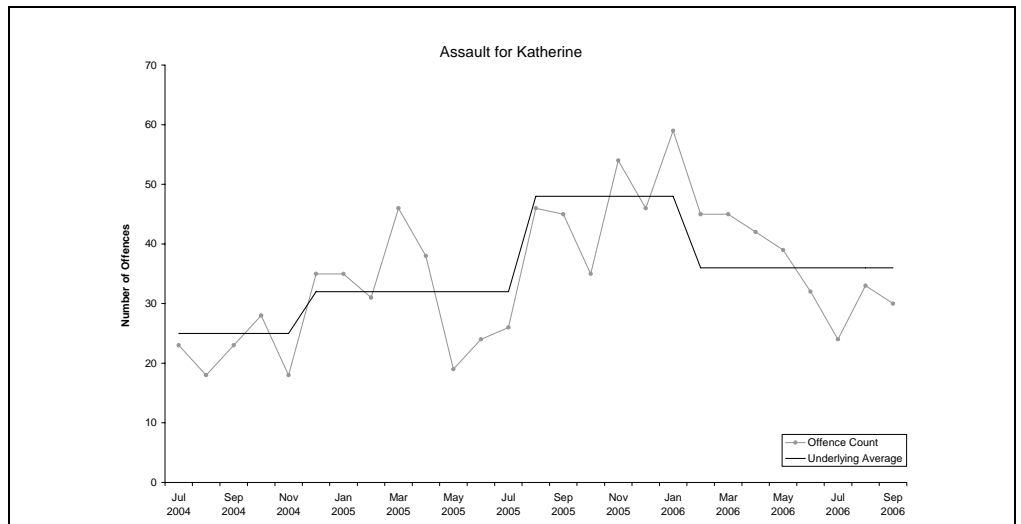
The underlying average smooths out volatility and identifies major changes in the level of crime.

ASSAULT

Underlying average – The underlying average level of recorded *assault* offences has ranged between 25 and 48 offences per month during the past nine quarters. Its current level of **36 per month** is in the middle of the range.

Trend – Over the past 12 months a downward trend was identified.

Quarterly comparisons – There were 87 recorded *assault* offences in Katherine in the current quarter, a **decrease of 23% (26)** from the previous quarter and a decrease of 26% (30) from the same quarter the previous year.

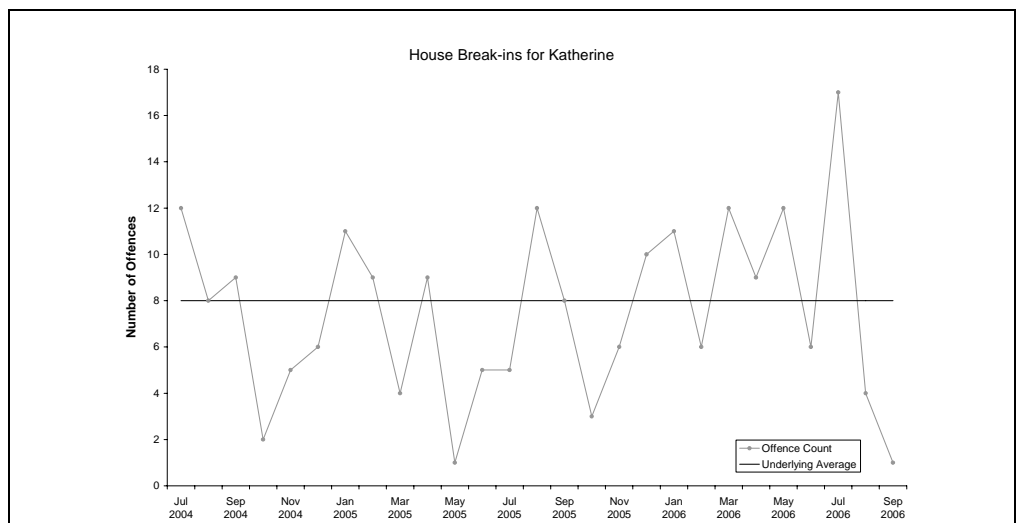


HOUSE BREAK-INS

Underlying average – The underlying average level of *house break-ins* has remained stable at **8 offences per month** during the past nine quarters.

Trend – Over the past 12 months no trend was identified.

Quarterly comparisons – There were 22 *house break-ins* in the current quarter, a **decrease of 19% (5)** from the previous quarter and a decrease of 12% (3) from the same quarter the previous year.



* Source: The Northern Territory Quarterly Crime & Justice Statistics, Issue 17: September Quarter 2006

Recorded Crime September Quarter 2006

Katherine – key findings*

Explanatory Notes

Largely as a result of its small population, statistics in the Northern Territory can be highly volatile with large swings from one period to the next.

Consequently recorded crime statistics are presented over an extended two-year period to present the current period's data within the context of any longer term trends.

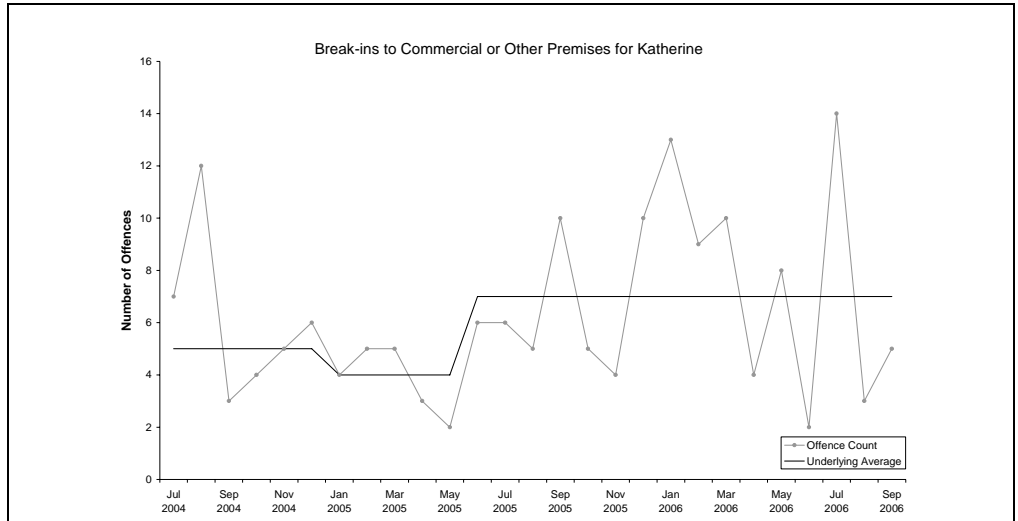
The underlying average smooths out volatility and identifies major changes in the level of crime.

BREAK-INS TO COMMERCIAL OR OTHER PREMISES

Underlying average – The underlying average level of *break-ins to commercial or other premises* has ranged between 4 and 7 offences per month during the past nine quarters. Its current level of **7 per month** is at the higher end of the range.

Trend – Over the past 12 months no trend was identified.

Quarterly comparisons – There were 22 *break-ins to commercial or other premises* in the current quarter, an **increase of 57% (8)** from the previous quarter and an increase of 5% (1) from the same quarter the previous year.

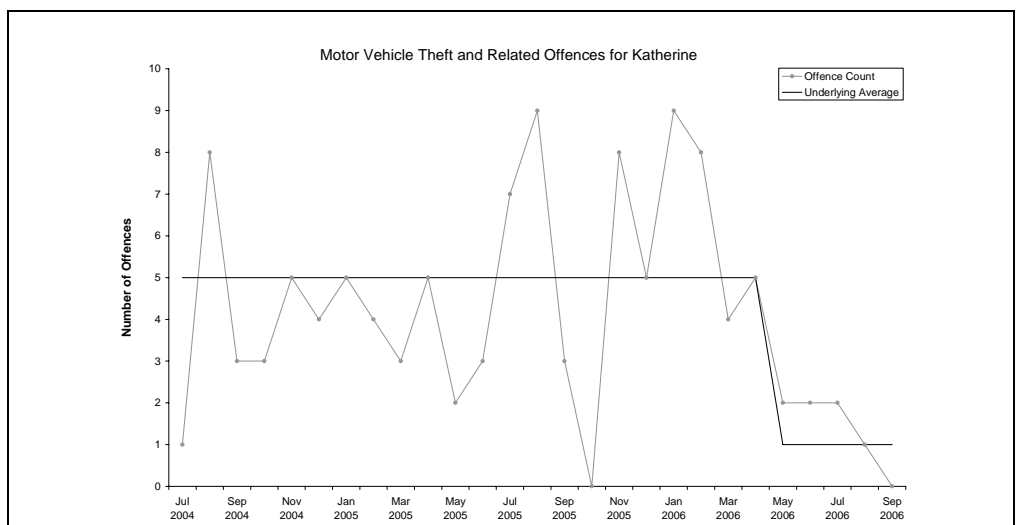


MOTOR VEHICLE THEFT AND RELATED OFFENCES

Underlying average – The underlying average level of recorded *motor vehicle theft and related offences* has ranged between 1 and 5 offences per month during the past nine quarters. Its current level of **1 per month** is at the lower end of the range.

Trend – Over the past 12 months a downward trend was identified.

Quarterly comparisons – There were 3 *motor vehicle theft and related offences* in the current quarter, a **decrease of 67% (6)** from the previous quarter and a decrease of 84% (16) from the same quarter the previous year.



* Source: The Northern Territory Quarterly Crime & Justice Statistics, Issue 17: September Quarter 2006

Recorded Crime September Quarter 2006

Katherine – key findings*

Explanatory Notes

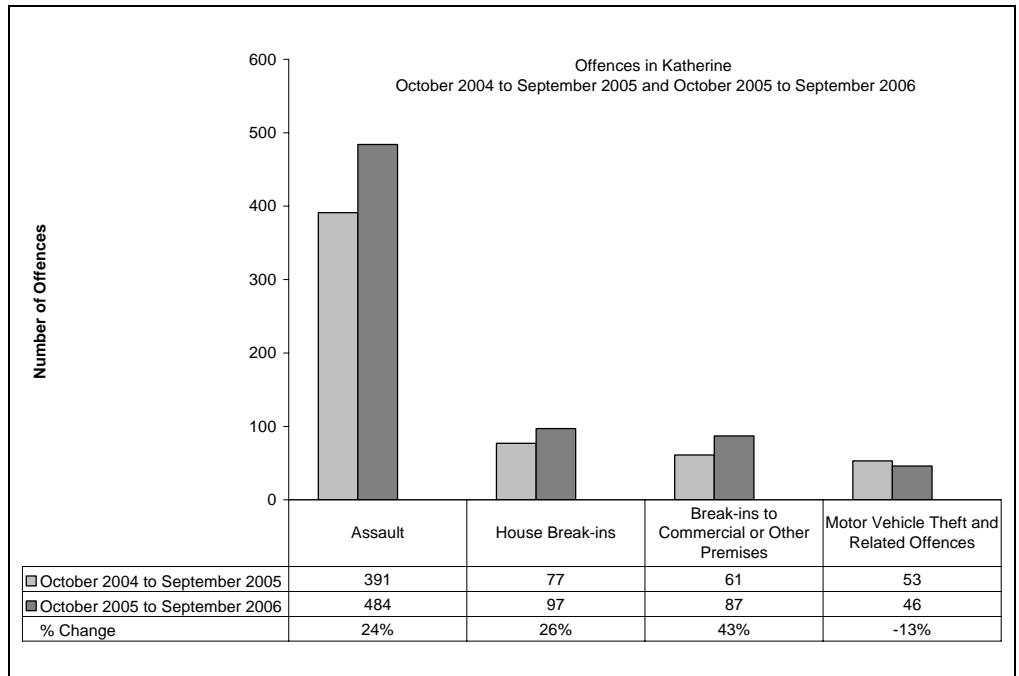
Largely as a result of its small population, statistics in the Northern Territory can be highly volatile with large swings from one period to the next.

Consequently recorded crime statistics are presented over an extended two-year period to present the current period's data within the context of any longer term trends.

The underlying average smooths out volatility and identifies major changes in the level of crime.

TWELVE-MONTH COMPARISON

Twelve-month figures provide comparable information on how crime is tracking from one 12 month period to the next.



Assault

During the 12 months to the end of September 2006 a total of 484 *assault* offences were recorded, **24% (93) more** than the previous 12 months.

House Break-ins

During the 12 months to the end of September 2006 a total of 97 *house break-ins* were recorded, **26% (20) more** than the previous 12 months.

Break-ins to Commercial or Other Premises

During the 12 months to the end of September 2006 a total of 87 *break-ins to commercial or other premises* were recorded, **43% (26) more** than the previous 12 months.

Motor Vehicle Theft and Related Offences

During the 12 months to the end of September 2006 a total of 46 *motor vehicle theft and related offences* were recorded, **13% (7) less** from the previous 12 months.

* Source: The Northern Territory Quarterly Crime & Justice Statistics, Issue 17: September Quarter 2006

Recorded Crime September Quarter 2006

Tennant Creek – key findings*

Explanatory Notes

Largely as a result of its small population, statistics in the Northern Territory can be highly volatile with large swings from one period to the next.

Consequently recorded crime statistics are presented over an extended two-year period to present the current period's data within the context of any longer term trends.

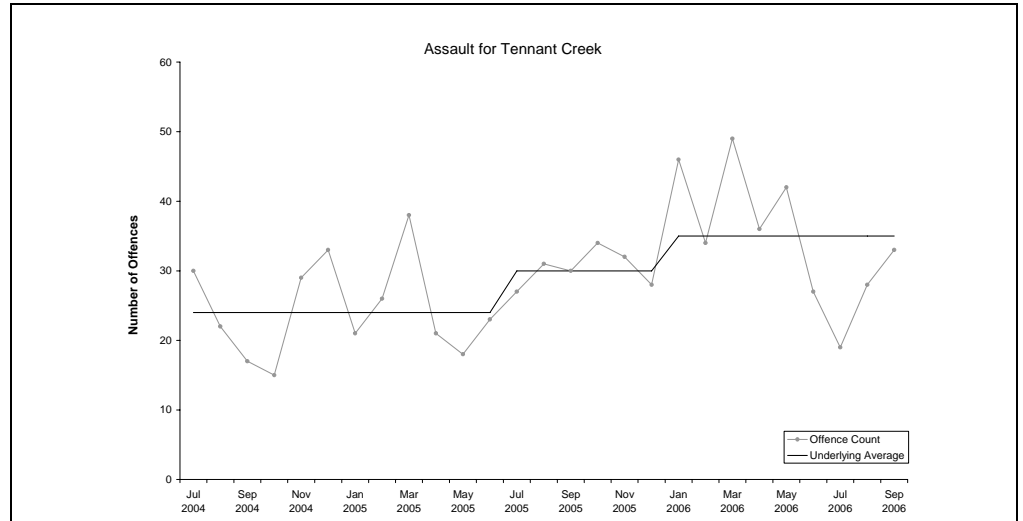
The underlying average smooths out volatility and identifies major changes in the level of crime.

ASSAULT

Underlying average – The underlying average level of recorded *assault* offences has ranged between 24 and 35 offences per month during the past nine quarters. Its current level of **35 per month** is at the higher end of the range.

Trend – Over the past 12 months no trend was identified.

Quarterly comparisons – There were 80 recorded *assault* offences in Tennant Creek in the current quarter, a **decrease of 24% (25)** from the previous quarter and a decrease of 9% (8) from the same quarter the previous year.

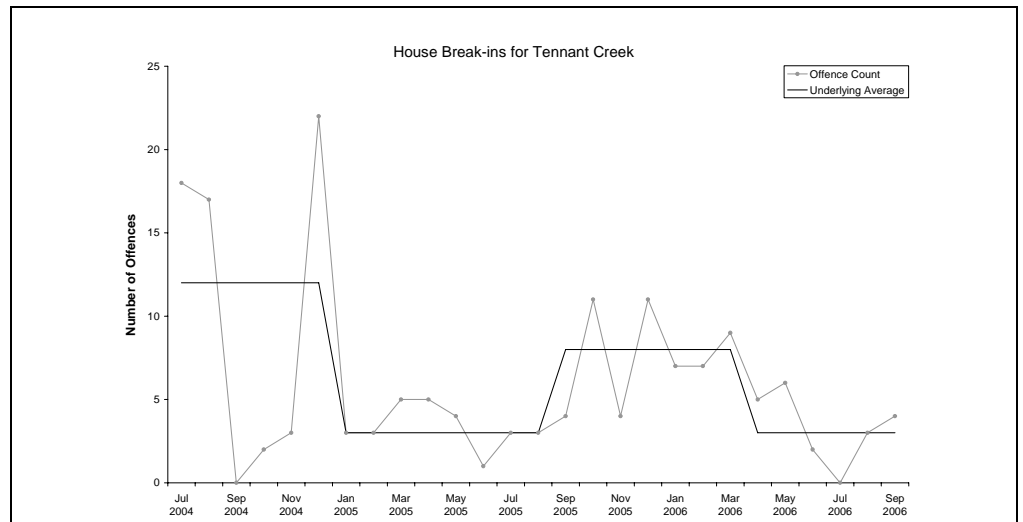


HOUSE BREAK-INS

Underlying average – The underlying average level of *house break-ins* has ranged between 3 and 12 offences per month during the past nine quarters. Its current level of **3 per month** is at the lower end of the range.

Trend – Over the past 12 months a downward trend was identified.

Quarterly comparisons – There were 7 *house break-ins* in the current quarter, a **decrease of 6** from the previous quarter and a decrease of 3 from the same quarter the previous year.



* Source: The Northern Territory Quarterly Crime & Justice Statistics, Issue 17: September Quarter 2006



Recorded Crime September Quarter 2006

Tennant Creek – key findings*

Explanatory Notes

Largely as a result of its small population, statistics in the Northern Territory can be highly volatile with large swings from one period to the next.

Consequently recorded crime statistics are presented over an extended two-year period to present the current period's data within the context of any longer term trends.

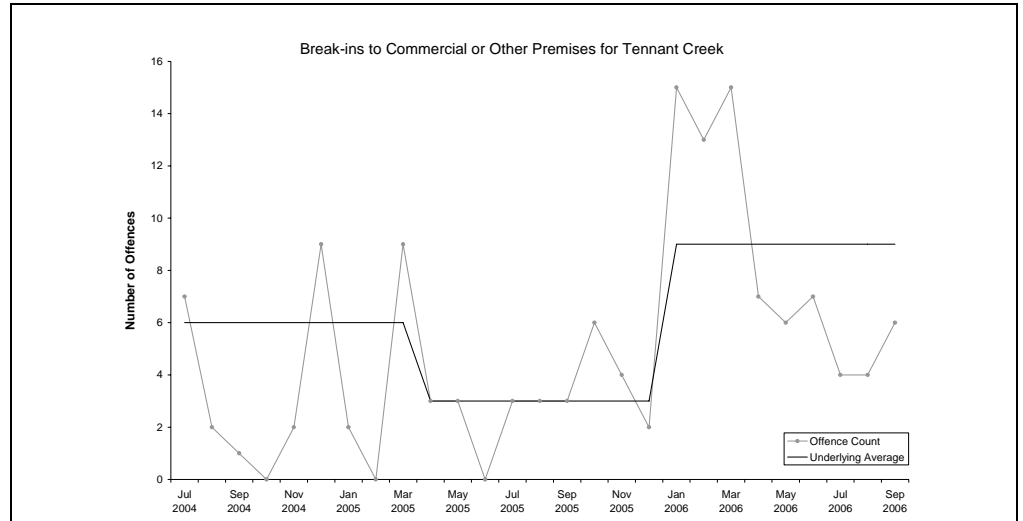
The underlying average smooths out volatility and identifies major changes in the level of crime.

BREAK-INS TO COMMERCIAL OR OTHER PREMISES

Underlying average – The underlying average level of *break-ins to commercial or other premises* has ranged between 3 and 9 offences per month during the past nine quarters. Its current level of **9 per month** is at the higher end of the range.

Trend – Over the past 12 months no trend was identified.

Quarterly comparisons – There were 14 *break-ins to commercial or other premises* in the current quarter, a **decrease of 30% (6)** from the previous quarter, but an increase of 56% (5) from the same quarter the previous year.



* Source: The Northern Territory Quarterly Crime & Justice Statistics, Issue 17: September Quarter 2006

Recorded Crime September Quarter 2006

Tennant Creek – key findings*

Explanatory Notes

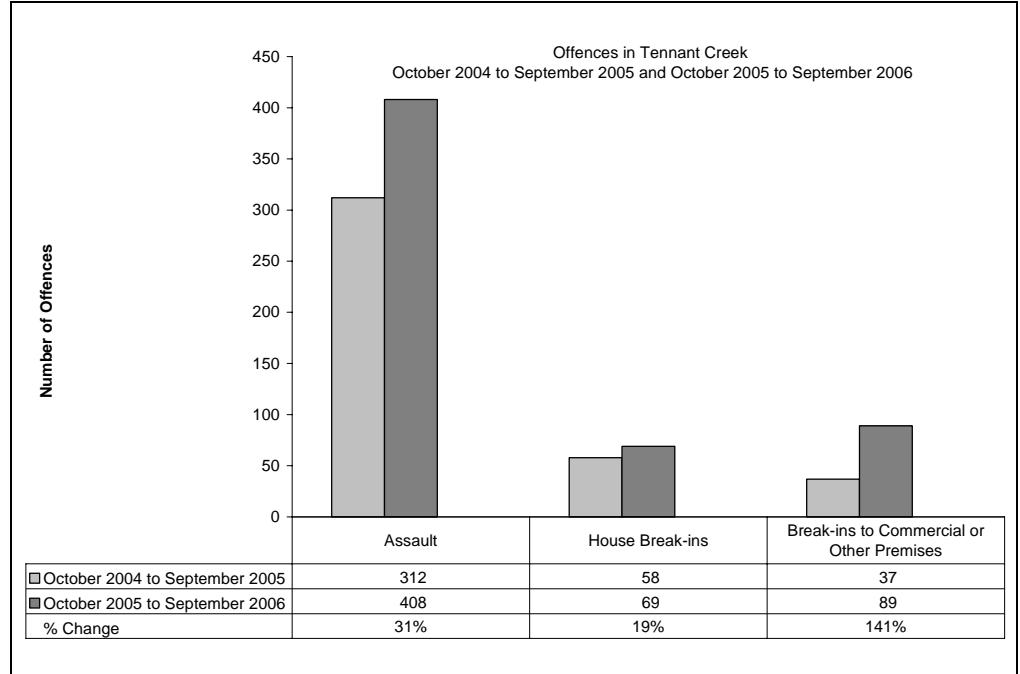
Largely as a result of its small population, statistics in the Northern Territory can be highly volatile with large swings from one period to the next.

Consequently recorded crime statistics are presented over an extended two-year period to present the current period's data within the context of any longer term trends.

The underlying average smooths out volatility and identifies major changes in the level of crime.

TWELVE-MONTH COMPARISON

Twelve-month figures provide comparable information on how crime is tracking from one 12 month period to the next.



Assault

During the 12 months to the end of September 2006 a total of 408 assault offences were recorded, **31% (96) more** than the previous 12 months.

House Break-ins

During the 12 months to the end of September 2006 a total of 69 house break-ins were recorded, **19% (11) more** than the previous 12 months.

Break-ins to Commercial or Other Premises

During the 12 months to the end of September 2006 a total of 89 break-ins to commercial or other premises were recorded, **141% (52) more** than the previous 12 months.

* Source: The Northern Territory Quarterly Crime & Justice Statistics, Issue 17: September Quarter 2006

Recorded Crime September Quarter 2006

Nhulunbuy – key findings*

Explanatory Notes

Largely as a result of its small population, statistics in the Northern Territory can be highly volatile with large swings from one period to the next.

Consequently recorded crime statistics are presented over an extended two-year period to present the current period's data within the context of any longer term trends.

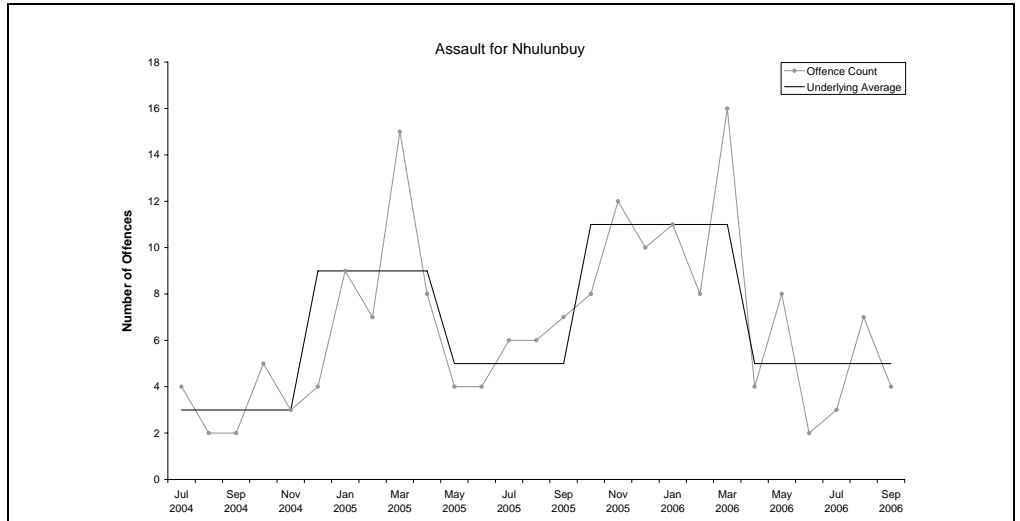
The underlying average smooths out volatility and identifies major changes in the level of crime.

ASSAULT

Underlying average – The underlying average level of recorded *assault* offences has ranged between 3 and 11 offences per month during the past nine quarters. Its current level of **5 per month** is at the lower end of the range.

Trend – Over the past 12 months a downward trend was identified.

Quarterly comparisons – There were 14 recorded *assault* offences in Nhulunbuy in the current quarter, **no change** from the previous quarter, but a decrease of 26% (5) from the same quarter the previous year.

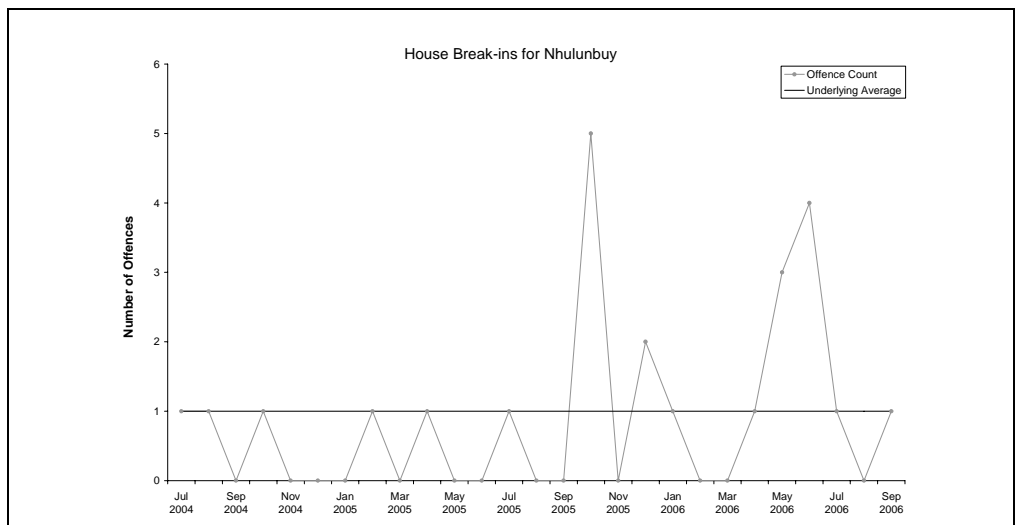


HOUSE BREAK-INS

Underlying average – The underlying average level of *house break-ins* has remained at **1 offence per month** during the past nine quarters.

Trend – Over the past 12 months no trend was identified.

Quarterly comparisons – There were 2 *house break-ins* in the current quarter, a **decrease** of 6 from the previous quarter, but an increase of 1 from the same quarter the previous year.



* Source: The Northern Territory Quarterly Crime & Justice Statistics, Issue 17: September Quarter 2006

Recorded Crime September Quarter 2006

Nhulunbuy – key findings*

Explanatory Notes

Largely as a result of its small population, statistics in the Northern Territory can be highly volatile with large swings from one period to the next.

Consequently recorded crime statistics are presented over an extended two-year period to present the current period's data within the context of any longer term trends.

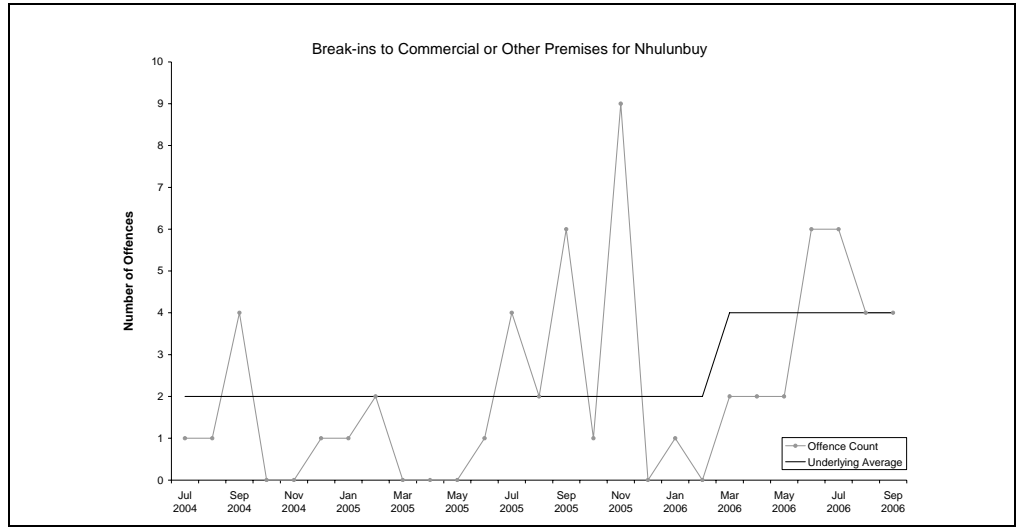
The underlying average smooths out volatility and identifies major changes in the level of crime.

BREAK-INS TO COMMERCIAL OR OTHER PREMISES

Underlying average – The underlying average level of *break-ins to commercial or other premises* has ranged between 2 and 4 offences per month during the past nine quarters. Its current level of **4 offences per month** is at the higher end of the range.

Trend – Over the past 12 months no trend was identified.

Quarterly comparisons – There were 14 *break-ins to commercial or other premises* in the current quarter, an **increase of 40% (4)** from the previous quarter and an increase of 17% (2) from the same quarter the previous year.



* Source: The Northern Territory Quarterly Crime & Justice Statistics, Issue 17: September Quarter 2006

Recorded Crime September Quarter 2006

Nhulunbuy – key findings*

Explanatory Notes

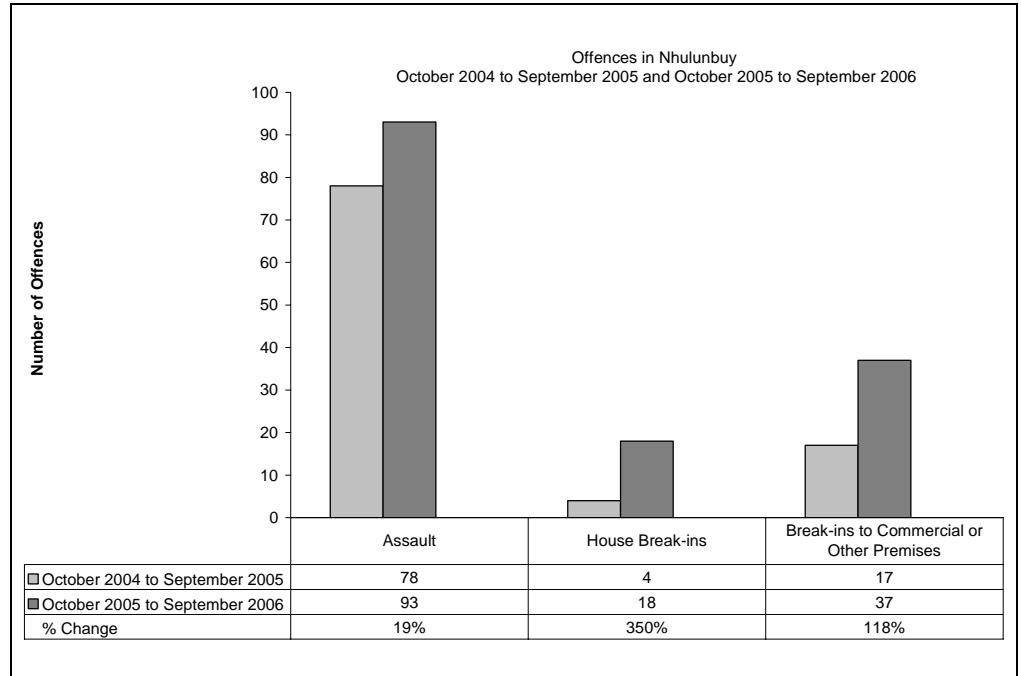
Largely as a result of its small population, statistics in the Northern Territory can be highly volatile with large swings from one period to the next.

Consequently recorded crime statistics are presented over an extended two-year period to present the current period's data within the context of any longer term trends.

The underlying average smooths out volatility and identifies major changes in the level of crime.

TWELVE-MONTH COMPARISON

Twelve-month figures provide comparable information on how crime is tracking from one 12 month period to the next.



Assault

During the 12 months to the end of September 2006 a total of 93 *assault* offences were recorded, **19% (15) more** than the previous 12 months.

House Break-ins

During the 12 months to the end of September 2006 a total of 18 *house break-ins* were recorded, **350% (14) more** than the previous 12 months.

Break-ins to Commercial or Other Premises

During the 12 months to the end of September 2006 a total of 37 *break-ins to commercial or other premises* were recorded, **118% (20) more** than the previous 12 months.

* Source: The Northern Territory Quarterly Crime & Justice Statistics, Issue 17: September Quarter 2006

Recorded Crime September Quarter 2006 Northern Territory Balance – key findings*

Explanatory Notes

Largely as a result of its small population, statistics in the Northern Territory can be highly volatile with large swings from one period to the next.

Consequently recorded crime statistics are presented over an extended two-year period to present the current period's data within the context of any longer term trends.

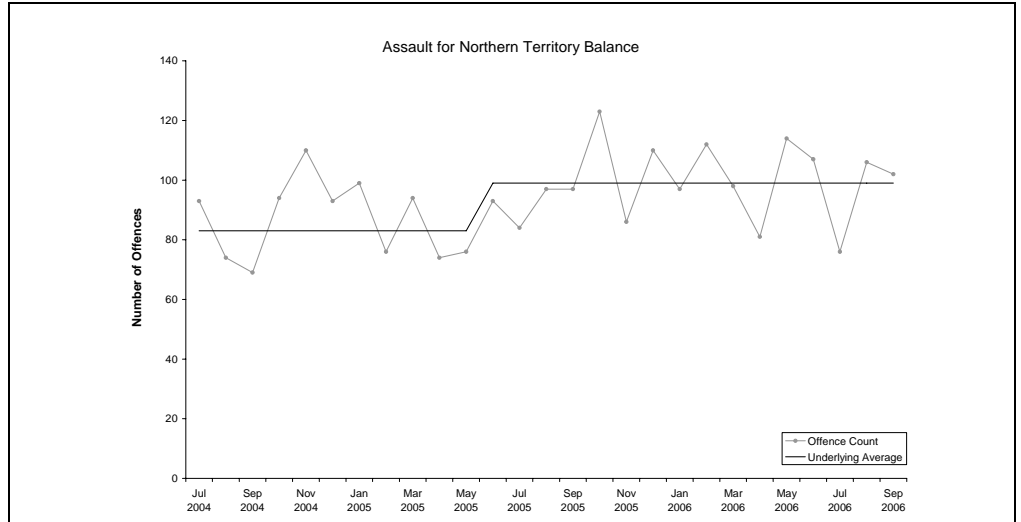
The underlying average smooths out volatility and identifies major changes in the level of crime.

ASSAULT

Underlying average – The underlying average level of recorded *assault* offences has ranged between 83 and 99 offences per month during the past nine quarters. Its current level of **99 per month** is at the higher end of the range.

Trend – Over the past 12 months no trend was identified.

Quarterly comparisons – There were 284 recorded *assault* offences in the Northern Territory Balance in the current quarter, a **decrease of 6% (18)** from the previous quarter, but an increase of 2% (6) from the same quarter the previous year.

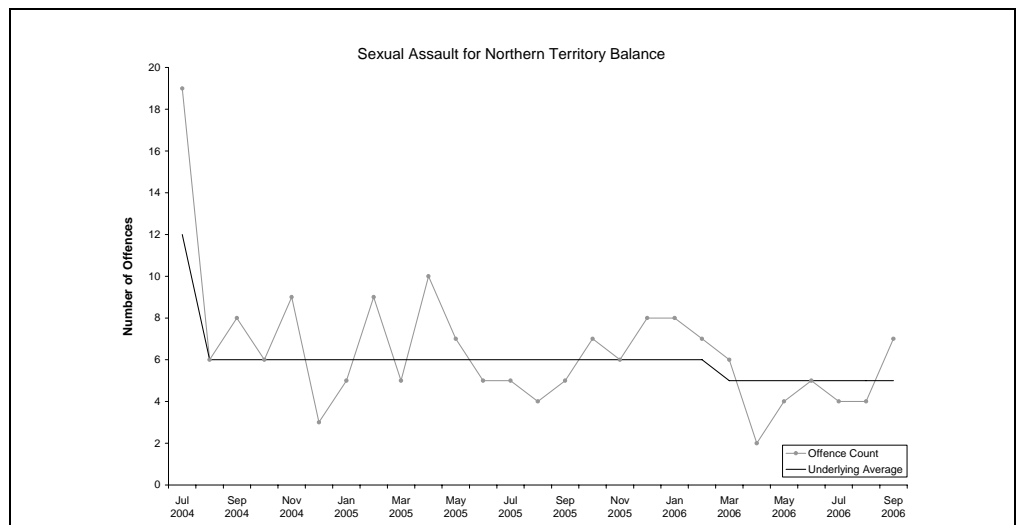


SEXUAL ASSAULT

Underlying average – The underlying average level of recorded *sexual assault* offences has ranged between 5 and 12 offences per month during the past nine quarters. Its current level of **5 per month** is at the lower end of the range.

Trend – Over the past 12 months no trend was identified.

Quarterly comparisons – There were 15 recorded *sexual assault* offences in the Northern Territory Balance in the current quarter, an **increase of 36% (4)** from the previous quarter and an increase of 7% (1) from the same quarter the previous year.



* Source: The Northern Territory Quarterly Crime & Justice Statistics, Issue 17: September Quarter 2006

Recorded Crime September Quarter 2006

Northern Territory Balance – key findings*

Explanatory Notes

Largely as a result of its small population, statistics in the Northern Territory can be highly volatile with large swings from one period to the next.

Consequently recorded crime statistics are presented over an extended two-year period to present the current period's data within the context of any longer term trends.

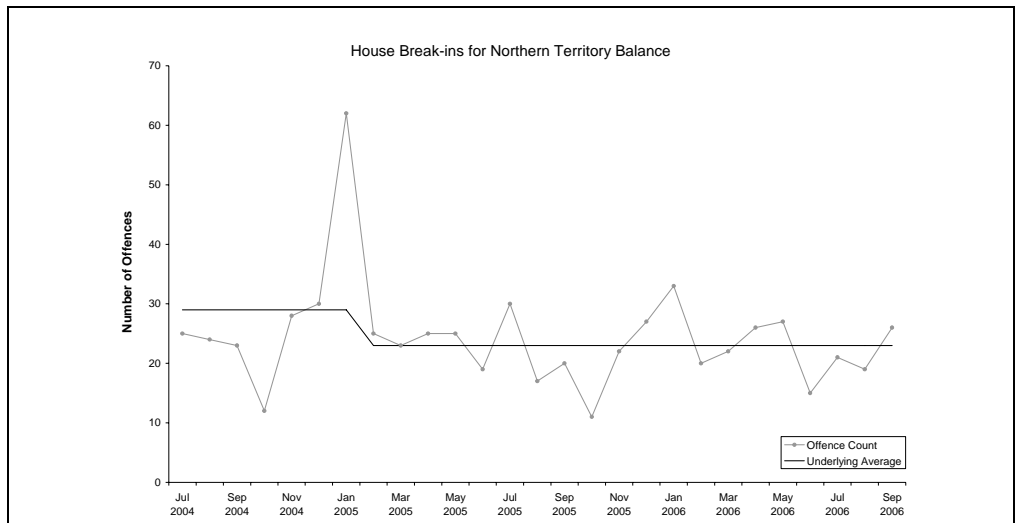
The underlying average smooths out volatility and identifies major changes in the level of crime.

HOUSE BREAK-INS

Underlying average – The underlying average level of *house break-ins* has ranged between 23 and 29 offences per month during the past nine quarters. Its current level of **23 per month** is at the lower end of the range.

Trend – Over the past 12 months no trend was identified.

Quarterly comparisons – There were 66 *house break-ins* in the current quarter, a **decrease of 3% (2)** from the previous quarter and a decrease of 1% (1) from the same quarter the previous year.

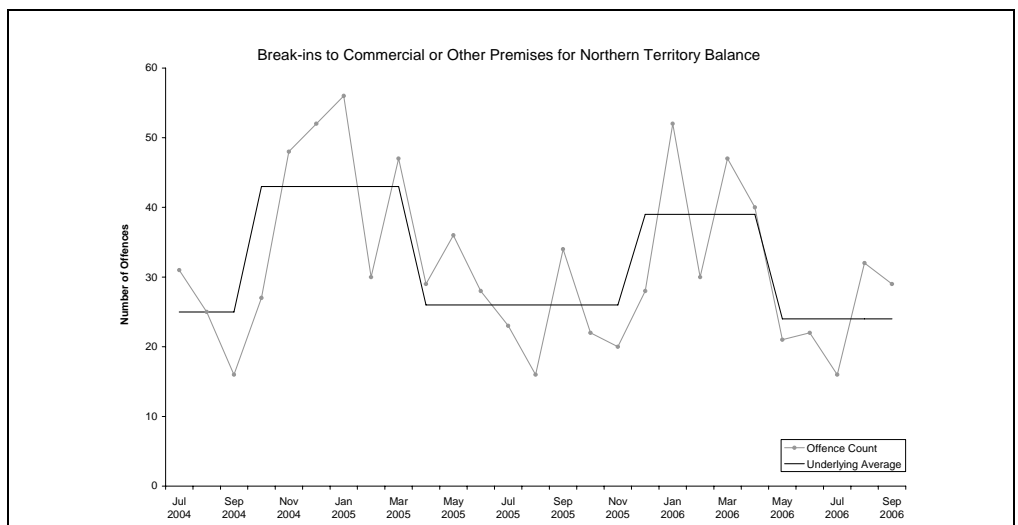


BREAK-INS TO COMMERCIAL OR OTHER PREMISES

Underlying average – The underlying average level of *break-ins to commercial or other premises* has ranged between 24 and 43 offences per month during the past nine quarters. Its current level of **24 per month** is at the lower end of the range.

Trend – Over the past 12 months no trend was identified.

Quarterly comparisons – There were 77 *break-ins to commercial or other premises* in the current quarter, a **decrease of 7% (6)** from the previous quarter, but an increase of 5% (4) from the same quarter the previous year.



* Source: The Northern Territory Quarterly Crime & Justice Statistics, Issue 17: September Quarter 2006

Recorded Crime September Quarter 2006

Northern Territory Balance – key findings*

Explanatory Notes

Largely as a result of its small population, statistics in the Northern Territory can be highly volatile with large swings from one period to the next.

Consequently recorded crime statistics are presented over an extended two-year period to present the current period's data within the context of any longer term trends.

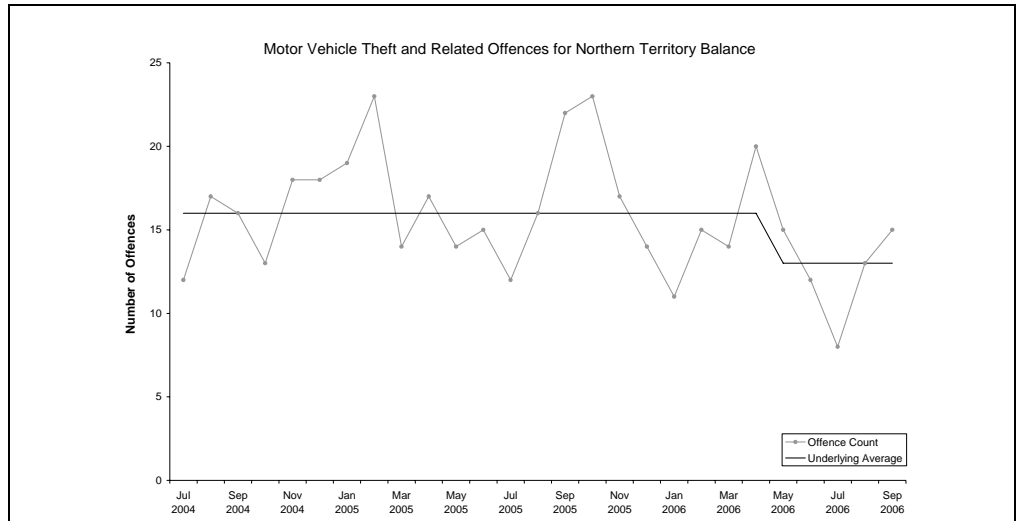
The underlying average smooths out volatility and identifies major changes in the level of crime.

MOTOR VEHICLE THEFT AND RELATED OFFENCES

Underlying average – The underlying average level of recorded *motor vehicle theft and related offences* has ranged between 13 and 16 offences per month during the past nine quarters. Its current level of **13 per month** is at the lower end of the range.

Trend – Over the past 12 months no trend was identified.

Quarterly comparisons – There were 36 *motor vehicle theft and related offences* in the current quarter, a **decrease of 23% (11)** from the previous quarter and a decrease of 28% (14) from the same quarter the previous year.



* Source: The Northern Territory Quarterly Crime & Justice Statistics, Issue 17: September Quarter 2006

Recorded Crime September Quarter 2006 Northern Territory Balance – key findings*

Explanatory Notes

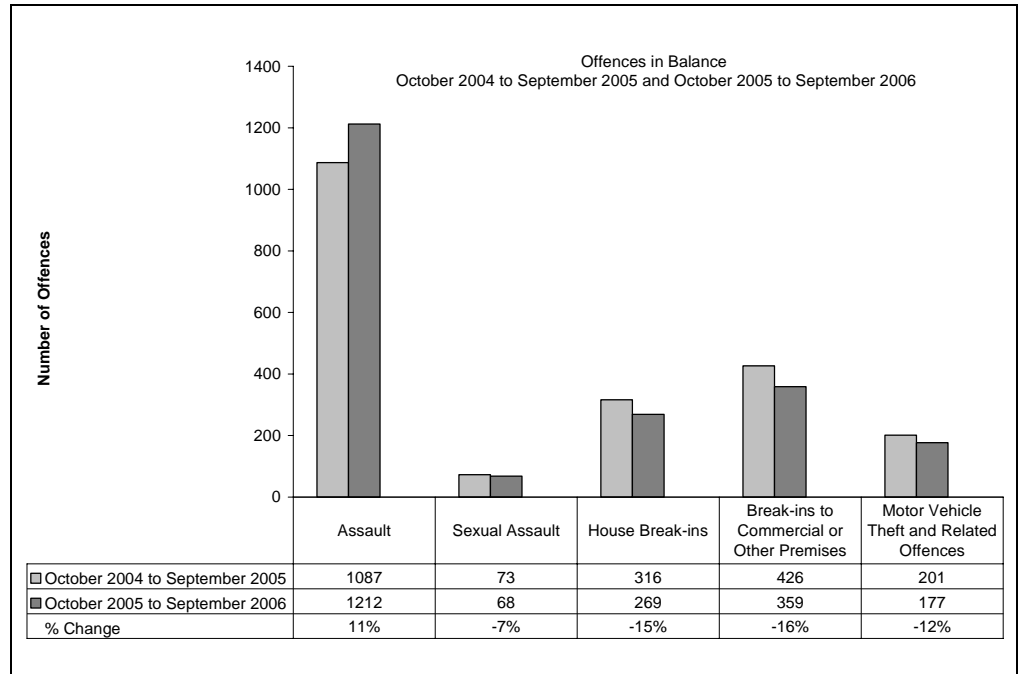
Largely as a result of its small population, statistics in the Northern Territory can be highly volatile with large swings from one period to the next.

Consequently recorded crime statistics are presented over an extended two-year period to present the current period's data within the context of any longer term trends.

The underlying average smooths out volatility and identifies major changes in the level of crime.

TWELVE-MONTH COMPARISON

Twelve-month figures provide comparable information on how crime is tracking from one 12 month period to the next.



Assault

During the 12 months to the end of September 2006 a total of 1212 *assault* offences were recorded, **11% (125) more** than the previous 12 months.

Sexual Assault

During the 12 months to the end of September 2006 a total of 68 *sexual assault* offences were recorded, **7% (5) less** than the previous 12 months.

House Break-ins

During the 12 months to the end of September 2006 a total of 269 *house break-ins* were recorded, **15% (47) less** than the previous 12 months.

Break-ins to Commercial or Other Premises

During the 12 months to the end of September 2006 a total of 359 *break-ins to commercial or other premises* were recorded, **16% (67) less** than the previous 12 months.

Motor Vehicle Theft and Related Offences

During the 12 months to the end of September 2006 a total of 177 *motor vehicle theft and related offences* were recorded, **12% (24) less** than the previous 12 months.

* Source: The Northern Territory Quarterly Crime & Justice Statistics, Issue 17: September Quarter 2006