
Northern Territory
Department of Justice
Statistical Summary
2002-2003

Statistical Information

BACKGROUND

Care must be taken when comparing statistics in this section with those quoted in other publications. Different data collection timeframes may have been used, or information may have been obtained from different sources, or using different counting methods.

The information provided in this statistical supplement relating to the Australian Bureau of Statistics (ABS) Prisoner Census is from the preliminary data supplied to the ABS for the NT, it is possible that some differences may occur between figures in this report and the final figures published by the ABS.

Reporting of offences is based on the most serious offence for the episode as recorded in the Integrated Justice Information System (IJIS).

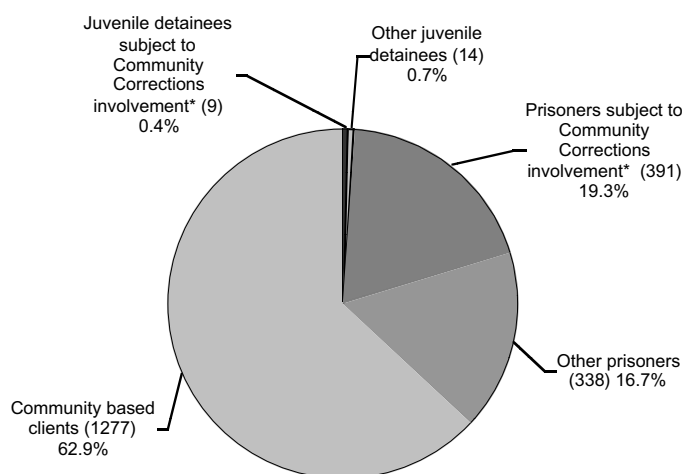
The values quoted for components of a daily average may not sum to the total daily average. This is due to rounding errors inherent in the display format chosen for the daily averages.

New data extraction procedures and counting rules used for processing Community Corrections data were implemented during last year's reporting process. Hence some of the Community Corrections figures published prior to the 2001-02 financial year are not directly comparable to this year's figures.

This year, a new approach has been adopted to reporting the aggregate sentences of persons in custody. Table 16 reports on the commencement of a sentence status (either by the commencement of a sentenced episode or the changing of an episode from remand to sentenced) during the financial year. In previous years, Table 16 only reported on episodes in which the start date of the sentence occurred within the financial year. Hence, in previous years, those episodes in which the start date of a sentence was backdated to a previous financial year (often due to long remand periods associated with serious offences) were excluded. Consequently, figures published in Table 16 this year may not be comparable with those published in previous annual reports. In addition, in Table 16 and Table 17 a new method has been used to classify the aggregate sentence lengths. Hence no comparisons should be made between these tables and previous publications.

CASELOAD OVERVIEW

Chart 1. Northern Territory Correctional Services caseload as at 30 June 2003



* Relates to those prisoners/detainees who are undertaking a pre-probation or pre-parole program or are life sentenced prisoners who are receiving services from a Community Corrections Officer.

On 30 June 2003, the Northern Territory Correctional Services caseload was 2,029 people, either undertaking a community correction program or in custody in a correctional institution. This is estimated as 989 per 100,000¹ persons in the Northern Territory.

ADULT PRISONERS

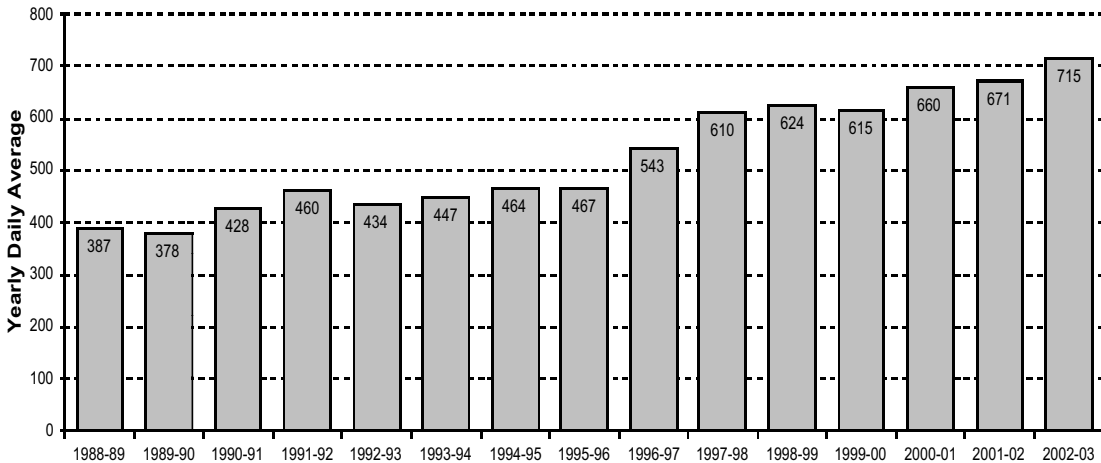
Population

There were 2,012 receptions into Northern Territory adult correctional institutions in 2002-03, which involved 1,607 distinct persons.

The daily average number of prisoners held in adult correctional institutions in the Northern Territory in 2002-03 was 715, which was higher than the previous year (671).

As can be seen in the Chart 2, the prison population has generally been increasing over the past 15 years, with a marked increase between 1995-96 and 1997-98.

Chart 2. Yearly daily average number of prisoners in custody in Northern Territory adult correctional institutions from 1988-89 to 2002-03



The minimum and maximum number of persons that were held in custody in an adult correctional institution in the Northern Territory during 2002-03 was 652 and 780 respectively.

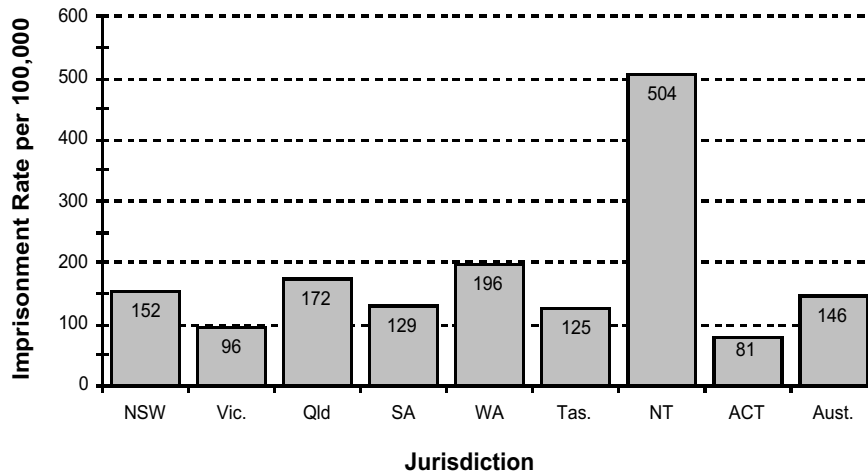
Summary of prisoner numbers in 2002-03 by adult correctional institution

Correctional Institution	Minimum	Maximum	Daily Average	Design Capacity
Alice Springs Correctional Centre	303	397	346	400
Darwin Correctional Centre	330	409	369	400
All Centres	652	780	715	800

The average occupancy level of the combined prisons was 89% during the 2002-03 year.

¹ The projected NT population as at 30th June 2003 was obtained from the Australian Bureau of Statistics publication (3222.7) – Population Projections, Northern Territory; 1999 to 2021.

Chart 3. Estimated rates of imprisonment of adults per 100,000 adult population according to jurisdiction for the first three quarters 2002-03



Estimates based on ABS Corrective Services Australia figures for the first three quarters of 2002-03.

The rate of imprisonment² of adults in the Northern Territory for 2002-03 is estimated to be 504 per 100,000 adults, which continues to be significantly higher than in other jurisdictions. The national rate of imprisonment is estimated as 146 per 100,000 adults.

Sentence Status

On 30 June 2003, sentenced prisoners represented 84% of those in custody. Of these 36% had a sentence of less than 12 months. Sentenced persons represented 61% of the receptions and 83% of the daily average number of prisoners in adult correctional institutions during 2002-03.

The average sentence length for sentenced persons held in custody (excluding persons with life sentences) during 2002-03 was 565 days and the median was 241 days. The average sentence length for sentenced Indigenous persons held in custody was 455 days.

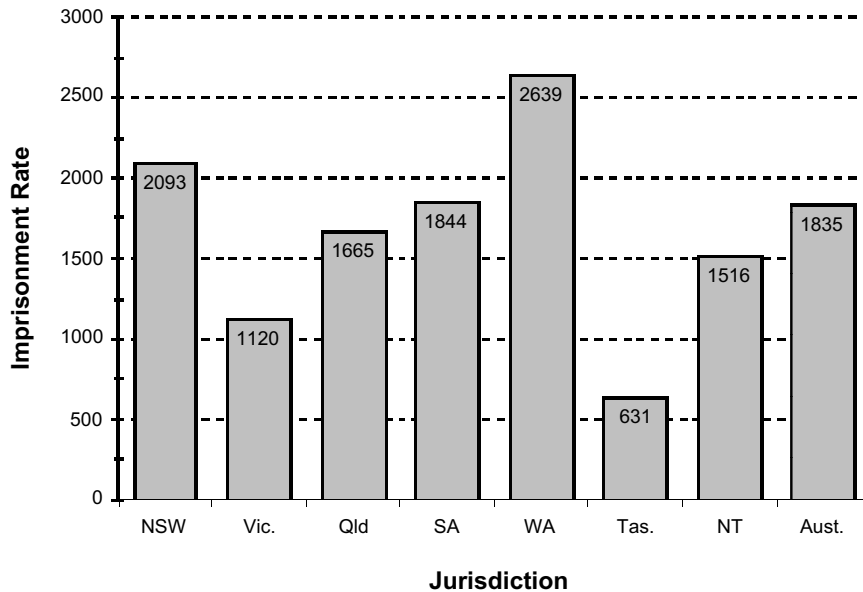
Indigenous Status / Race

There continues to be a disproportionate number of Indigenous people in custody. The daily average number of Indigenous people in custody during 2002-03 was 530 persons, which represented 74% of the daily average. On 30 June 2003, there were 571 Indigenous persons in custody in an adult correctional institution in the Northern Territory, which represented 78% of prisoners for this day.

From Chart 4, the estimated rate of imprisonment of Indigenous adults in the Northern Territory was 1,516 persons per 100,000 Indigenous adults, which is less than the national average of 1,835 persons per 100,000 Indigenous adults.

² Derived from the Australian Bureau of Statistics publication (4512.0) – Corrective Services Australia; March quarter 2003. Note that data for the final quarter of the financial year 2002-03 was not released by the ABS at time of publication of this report. Figures in the chart above are based on the first three quarters.

Chart 4. Estimated rates of imprisonment of Indigenous adults per 100,000 Indigenous adult population, according to jurisdiction, 2002-03



Estimates based on ABS Corrective Services Australia figures for the first three quarters of 2002-03.

The estimated rate of imprisonment for the first three quarters of 2002-03 for Non-Indigenous people (excluding people smugglers) was 137 persons per 100,000 Non-Indigenous adults³.

People smugglers are Non-Australian citizens in custody for federal 'people smuggling' offences⁴ in Northern Territory correctional centres. There was a rapid increase in the number of receptions of alleged people smugglers starting in the 1999-00 financial year. The quarterly daily average number of people smugglers reach a peak of 141 in the December quarter 2001. Since then it has been decreasing, reaching a low of 21 in the June quarter of 2003.

On 30 June 2003, there were 11 persons in custody in an adult correctional institution for 'people smuggling' offences, 10 of whom were sentenced.

Annual daily average Non-Australian citizen adult prisoner and juvenile detainee population in Northern Territory correctional institutions, 1995-96 to 2002-03

Year/ quarter	Non-Australian Citizens				Total Non-Australian Citizens	% of All Prisoners and Detainees
	Offence Type			Non-Federal		
	Federal		Non-Federal			
	People Smuggling	Other Federal				
1995-96	1	13	16	30	6%	
1996-97	3	10	19	32	6%	
1997-98	2	11	26	39	6%	
1998-99	2	14	25	41	6%	
1999-00	71	12	28	112	18%	
2000-01	122	12	12	145	21%	
2001-02	121	14	6	141	20%	
2002-03	40	14	5	59	8%	
Sep. quarter 2002	63	11	4	78	11%	
Dec. quarter 2002	44	15	4	63	9%	
Mar. quarter 2003	31	17	6	53	7%	
Jun. quarter 2003	21	12	6	38	5%	

³ Average non-Indigenous adult population estimates derived from rates used in ABS (4512.0) Corrective Services Australia – March Quarter 2003.

⁴ Most serious offence as recorded in IJIS.

Last known address

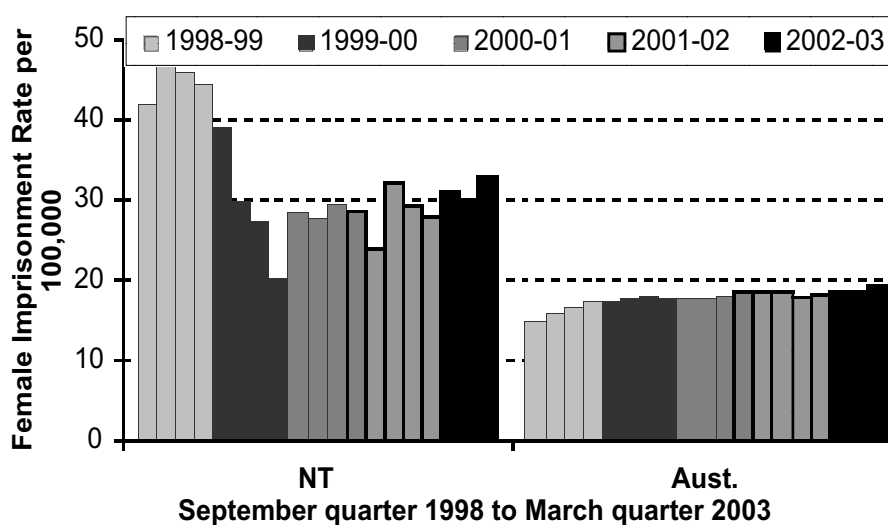
The Darwin and Palmerston region continues to be the most common last known address for persons in custody. In the 2003 Prisoner Census, 192 persons in custody (26%) had a last known address in this region.

Gender

On 30 June 2003, there were 22 adult females in custody, which represented 3% of the Northern Territory prison population. In 2002-03, there was a 14% reduction in the number of sentenced female receptions compared with the previous year.

The average daily number of adult females in custody during 2002-03 was 22, which was higher than the previous year (18). During the first three quarters of 2002-03 the average daily proportion of females in the Northern Territory prison population was 2.9% which is noticeably lower than the national average of 6.6% for the same period. The Northern Territory female imprisonment rate has steadied after the dramatic fall in 1999-00. The estimated rate for the first three quarters of 2002-03 was 31 per 100,000 adult females. The estimated Australian rate for the same period was 19 per 100,000 adult females.

Chart 5. Estimated quarterly imprisonment rates of adult females, September quarter 1998 to March quarter 2003



Estimates based on ABS Corrective Services Australia figures.

Age

The average age of prisoners received into custody during 2002-03 was 31 years. There were 9 people received into custody who were aged 60 years or older, with the oldest person being 67.

Marital Status

Of the prisoners in custody on 30 June 2003, 47% indicated that they were married at the time of their reception into custody.

Offence

The most common offence⁵ for persons held in custody on 30 June 2003 was assault (36% of prisoners), followed by break and enter (9% of prisoners).

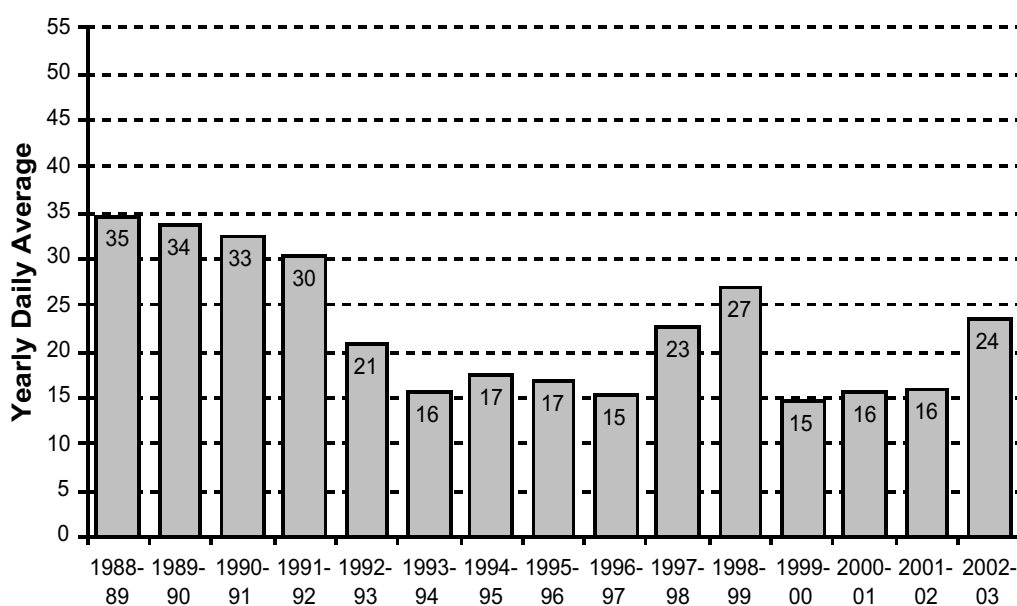
⁵ The most serious offence for the custody episode as recorded in IJIS.

JUVENILE DETAINEES

Population

As shown in Chart 6, there has been considerable fluctuation in the annual daily average number of persons in custody in juvenile detention centres over past years.

Chart 6. Yearly daily average number of detainees in custody in Northern Territory juvenile detention centres from 1988-89 to 2002-03



Note: prior to June 2000, 17 year olds were classified as adults.

The daily average number of persons detained in juvenile detention centres in the Northern Territory during 2002-03 was 24, which is higher than the previous year (16). This represents an estimated detention rate of 94 persons per 100,000 persons aged between 10 and 17 years⁶.

Summary of juvenile detainee numbers in 2002-03, by juvenile detention centre

Juvenile Detention Centre	Minimum	Maximum	Daily Average	Design Capacity
Don Dale Juvenile Detention Centre	9	24	17	25
Wildman River Wilderness Work Camp	0	9	6	20
Alice Springs Juvenile Holding Centre	0	6	1	10
All Centres	14	31	24	55

The minimum and maximum number of detainees held in custody during the year was 14 and 31 respectively.

Receptions and Sentence Status

There were 182 receptions into juvenile detention centres in the Northern Territory in 2002-03, which involved 107 distinct juveniles.

⁶ Ten to seventeen year old population estimates are derived from ABS Estimated Resident Population as at 30 September 2002. They include persons from 10 years old, up to but not including person 18 years old.

Most juveniles are unsentenced at the time of reception into a detention centre. However, during an episode a person may commence several types of orders. Thus during 2002-03, there were 197 distinct order commencements comprised of 138 remand order commencements (including holding orders), 58 detention order commencements and 1 fine default order commencements.

The daily average number of sentenced and unsentenced juveniles in detention for 2002-03 was 13 and 10 respectively.

Indigenous Status / Nationality

Of the 182 juvenile receptions in 2002-03, 149 (82%) were Indigenous. There was one foreign juvenile received during 2002-03.

Gender

Most of the persons received into a juvenile detention centre were males. Only seven (4%) of the 182 receptions were for female detainees.

Age

Of the 107 distinct persons who commenced at least one episode in a juvenile detention centre during 2002-03, most (85%) were in the 15 to 17 year old age group at the time of first reception.

Offence

The most common offences⁷ for juveniles received into detention during 2002-03 were property offences (54% of all receptions).

COMMUNITY CORRECTIONS CLIENTS

Population

During 2002-03, there were 1,180 conditional liberty commencements of which 40% (471) were for community work orders.

As at 30 June 2003, the Community Corrections caseload was comprised of 1,482 adults and 195 juveniles. Of these, 1,277 persons were undertaking a conditional liberty order, which represents an estimated rate of 622 persons per 100,000 total persons in the Northern Territory. The remaining 400 people in the community corrections caseload were in custody and were in a pre-parole or pre-probation program, or were life sentenced prisoners who were receiving services from community corrections officers.

Gender

Eleven percent of the conditional liberty program commencements were for females.

Indigenous Status

Indigenous people represented 77% of the conditional liberty program commencements.

Age

The majority (998 or 85%) of conditional liberty program commencements was for adults. The average and median age for distinct persons who commenced a conditional liberty program during 2002-03 was 27 years and 26 years respectively. The youngest person to commence an order was 12 years and the oldest was 62 years.

Offence

The most common offence⁸ varied according to the type of program. Overall, driving offences were the most common types of offences recorded in IJIS for community work order and home detention program commencements.

⁷ Most serious offence as recorded in IJIS.

⁸ Most serious offence as recorded in IJIS.

Overview of Performance

This part of the report is committed to reporting the activities and progress of the Division against the five key focus areas which are described in detail in the Business Plan:

- Containment;
- Supervision;
- Offender Rehabilitation and Reintegration;
- Reparation; and
- Advice to Sentencing Authorities.

PERFORMANCE

The following table contains information produced by the Steering Committee for the Review of Commonwealth/State Service Provision (SCRCSSP) contained in the 'Report on Government Services, 2003', which compares service delivery performance in Australia. Each jurisdiction provides standard information by which comparisons can be made. For corrective services, performance is categorised according to efficiency or effectiveness. Key focus areas mentioned above are addressed by at least one indicator and a selection of summary indicators are presented in the following table.

The information presented in the following table for other jurisdictions is for 2001-02 which is the most recent period in which this information is available. The Agency uses many of the findings from this exercise to establish benchmarks for its own business planning exercises.

In many instances, the Northern Territory differs from other jurisdictions. These unique characteristics include the small general population of which a high proportion is comprised of Indigenous persons, dispersion of the population and remoteness which results in higher costs for goods and services and the physical location of the Northern Territory in comparison to other states.

It should also be noted that some of the indicators used in the following table may differ from those used elsewhere in this Annual Report. This may be due to differences between jurisdictions in accrual or cash accounting processes and the exclusion of juvenile justice from the SCRCSSP exercise.

National Performance Indicators

Performance Indicators	2001-02							2002-03		
	NSW	Vic	Qld	WA	SA	Tas	ACT ¹	NT	Aust.	NT
Justice System										
Recidivism rate										
prisoners returning to prison ²	45.4	33.4	31.6	46.2	22.1	37.5	na	32.5	37.4	33.12
offenders returning to a community corrections program ³	na	20.0	9.4	30.7	15.6	18.9	na	15.2	18.9	16.38
Prisons										
<i>Descriptive</i>										
Daily average population	7764	3446	4982	2922	1436	386	203	671	21672	715
Imprisonment rate per 100,000 relevant population ⁴	154.6	91.7	178.7	204.1	123.3	109.1	83.6	480.1 ⁵	145.5	517.9 ¹⁴
Useable prison capacity	7785	3070	5490	2944	1342	525	69	800	na	800
Utilisation rate										
<i>Effectiveness</i>										
<i>(containment and supervision)</i>										
Escape rate ⁶	1.43	2.65	1.74	4.9	1.73	-	..	1.44	2.08	1.50
Open (per 100 prisoners)										
Secure	0.12	0.10	-	-	0.08	-	-	-	0.06	-
Death rate by apparent unnatural causes ⁷	0.10	0.06	0.14	0.17	0.21	0.26	-	-	0.12	-
Rate of assaults on:										
Prisoners by prisoners										
Serious Assault	1.1	1.1	1.2	1.8	0.3	0.5	na	0.6	1.1	0.1
Assault	16.4	6.0	6.9	16.1	0.8	4.7	na	4.2	11.0	4.5
Officers by Prisoners										
Serious Assault	-	-	0.1	0.8	-	-	na	0.4	0.2	0.0
Assault	1.4	0.5	1.0	3.3	0.1	0.8	na	3.1	1.4	0.6
<i>(offender care)</i>										
Out of cell hours	10.6	12.2	12.3	12.4	10.2	10.7	9.5	8.9	11.4	10.0
<i>(reparation)</i>										
Proportion of prisoners employed	84.6	84.2	65.8	88.3	71.3	59.3	..	64.2	78.4	67.8
<i>(rehabilitation)</i>										
Proportion of prisoners in education ⁸	43.6	42.5	41.7	57.6	28.0	36.5	..	49.7	44.3	28.2
<i>Efficiency</i>										
<i>(resource management)</i>										
% of total utilisation	99.7	112.2	90.7	99.3	107.0	73.5	94.2	83.9	98.4	89.4
Costs per prisoner per day ⁹ (\$)	161.5	148.1	140.8	157.9	154.8	163.8	206.4	142.5 ¹⁰	154.9	142.3 ¹⁰
Community Supervision										
<i>Descriptive</i>										
Daily average population ^{1,12}	17486	6650	13445	5364	6205	933	1287	935	52305	935
Community supervision rate per 100,000 relevant population ⁴	348.2	177.0	482.3	374.7	532.7	263.8	529.7	669.0 ⁵	351.0	677.3 ¹⁴
<i>Effectiveness</i>										
<i>(containment and supervision)</i>										
% of people who successfully completed a community supervision order	78.5	71.3	61.4	62.9	67.3	86.2	82.1	66.3	69.5	71.7
<i>(offender care)</i>										
No indicator collected*	-	-	-	-	-	-	-	-	-	-
<i>(reparation)</i>										
Ratio of ordered to worked hours	na	na	1.9	2.1	3.1	na	2.5	1.8	na	1.9
<i>(rehabilitation)</i>										
Proportion of eligible offenders taking personal development	na	na	Na	54.9	na	na	7.8	49.1 ¹³	na	51.8
<i>Efficiency</i>										
<i>(resource management)</i>										
Costs per offender per day ⁹ (\$)	8.08	11.43	5.85	10.41	8.46	9.34	9.40	14.71 ¹⁰	8.40	14.23
Offender to operational staff ratio	34.6	19.7	46.0	55.3	38.1	30.1	31.4	24.0	34.7	26.7

na – not available

nc – not collected

.. – not applicable

* – No information relating to offender care has been collected relating to community supervision.

-
1. Prisoners from the ACT are held in NSW. The information provided only relates to remandees.
 2. Prisoners who are released to freedom and return to a correctional centre in the same jurisdiction within 2 years of their release.
 3. Offenders returning to a community corrections program in the same jurisdiction within 2 years of them successfully completing a program.
 4. Relevant population refers to all person aged 18 years and over.
 5. Estimated figures recorded in the previous year's report have been adjusted to reflect that published in the 'Report on Government Services 2003'.
 6. Per 100 prisoners and refers to prisoners, not incidents. Rate is determined by the number of prisoners divided by prisoner daily average (open or secure).
 7. Per 100 prisoners and is determined by the number of deaths divided by the prisoner daily average.
 8. As at 30 June 2003 for persons serving 3 months or more.
 9. Includes direct employee expenses (excluding payroll tax and long service leave) and operational costs, apportioned indirect costs for corporate support services provided by umbrella and expenditure incurred by other departments on our behalf.
 10. Payroll tax is not included in the NT figure for 2001-02 and 2002-03 to allow for comparison of NT costs between the two periods. Payroll tax is however included in the figures presented for other jurisdictions for 2001-02 which corresponds with that published in the 'Report on Government Services 2003'. Thus comparisons can not be made between the NT and other jurisdictions for 2001-02.
 11. Community supervision counts distinct persons not orders and for the Northern Territory, home detention clients are included in this group.
 12. Northern Territory figures do not include clients whose order has been in suspense for three years or more.
 13. 2001-02 figure amended to reflect that published in the 'Report on Government Services 2003'. (2001-02 figure was based on the community corrections caseload as at 30 June 2002 which included offenders with 'in suspense' orders. This figure was subsequently amended to preclude offenders with 'in suspense' orders as they are not eligible to participate in personal development courses).
 14. Estimated figures derived from Corrective Services, Australia March Quarter 2003, ABS catalogue 4512.0.

As can be seen, the Northern Territory compares reasonably with other jurisdictions in most of the performance indicators mentioned above. In the past few years, the measure of recidivism has been seen to be a partial measure of the whole justice system, not just correctional system. It is recognised that the rates of recidivism is partially determined by many factors outside the justice system, including education, employment and social conditions. The measures of recidivism used are limited in that they do not consider the types of re-offending, only follow a person within the same jurisdiction in which they completed the original corrections program and does not include any offences which result in an outcome not administered by correctional services (e.g. fines, bonds and suspended sentences).

Table 1. Census of prisoners on 30 June 2003 according to prison, sentence status, Indigenous status and sex

Prison/Sentence Status	Indigenous		Non-Indigenous		All		Total 2003		Total 2002	
	Male	Female	Male	Female	Male	Female	Number	% of Total	Number	% of Total
Alice Springs Correctional Centre										
Sentenced *	272	0	55	0	327	0	327		295	
Unsentenced	33	0	6	0	39	0	39		33	
Total	305	0	61	0	366	0	366	50.2%	328	49.2%
Darwin Correctional Centre										
Sentenced *	189	15	75	6	264	21	285		270	
Unsentenced	61	1	16		77	1	78		68	
Total	250	16	91	6	341	22	363	49.8%	338	50.8%
Total 30 June 2003										
Sentenced *	461	15	130	6	591	21	612			
Unsentenced	94	1	22	0	116	1	117			
Total	555	16	152	6	707	22	729	100.0%		
Total 30 June 2002										
Sentenced *	365	9	182	9	547	18			565	
Unsentenced	82	2	16	1	98	3			101	
Total	447	11	198	10	645	21			666	100%

* Includes people detained in custody at the Administrator's pleasure and persons in custody for fine default.

There were 9% more prisoners in custody in Northern Territory correctional institutions on 30 June 2003 than for the same day of the previous year. Males represented 97% of the prisoners on 30 June 2003. 84% of the prisoners were sentenced.

Table 2: Census of prisoners on 30 June 2003 according to prison and employment status at time of reception

Prison	Employment Status				Total	
	Employed	Unemployed	Other *	Not Stated	2003	2002
Alice Springs Correctional Centre	75	286	5	0	366	328
Darwin Correctional Centre	77	267	19	0	363	338
Total 30 June 2003	152	553	24	0	729	
Total 30 June 2002	158	474	18	16		666

* Other includes students, pensioners, home duties.

76% of prisoners held in custody on 30 June 2003 indicated that they were unemployed at time of reception.

Table 3: Census of prisoners on 30 June 2003 according to prison and age

Prison	Age (years)							Total	
	<18	18-19	20-29	30-39	40-49	50-59	60+	2003	2002
Alice Springs Correctional Centre	0	15	134	144	59	13	1	366	328
Darwin Correctional Centre	0	19	139	136	52	11	6	363	338
Total 30 June 2003	0	34	273	280	111	24	7	729	
Total 30 June 2002 *	0	30	267	236	105	20	8		666

* Age groups published in 2001-02 were calculated based on age at reception. These have been recalculated this year based on age as at 30 June 2002. Hence the 2002 figures above may not agree with previously published figures.

On 30 June 2003, 7 people aged 60 years or more were in custody, of which the eldest was 68 years old.

76% of prisoners held in custody on 30 June 2003 were between 20 and 39 years of age.

There was a 19% increase in the number of people aged 30-39 years in custody in a Northern Territory prison compared to last year.

Table 4: Census of prisoners on 30 June 2003 according to prison and marital status

Prison	Marital Status					Total	
	Never Married	Married	Separated/ Divorced	Widowed	Not Stated	2003	2002
Alice Springs Correctional Centre	149	182	33	2	0	366	328
Darwin Correctional Centre	174	160	16	12	1	363	338
Total 30 June 2003	323	342	49	14	1	729	
Total 30 June 2002	321	311	17	16	1		666

47% of prisoners held in custody on 30 June 2003, indicated at the time of their reception, that they were married.

Table 5: Census of prisoners on 30 June 2003 according to prison and aggregate sentence* (sentenced prisoners only)

Prison	Aggregate Sentence *									Total		
	<1 month	1<3 months	3<6 months	6<12 months	1<2 years	2<5 years	5> years	Admin. pleasure **	Life	number	average days ***	median days ***
Alice Springs Correctional Centre	4	11	31	64	69	62	66	1	19	327	1103	546
Darwin Correctional Centre	4	16	35	57	58	54	43	2	16	285	940	456
Total 30 June 2003	8	27	66	121	127	116	109	3	35	612	1027	517
Total 30 June 2002	6	14	63	78	115	150	103	3	33	565	1129	698

* The 'aggregate sentence' is the maximum period ordered by a court to be served in custody. This includes parole and remission periods for a single or multiple offences, which may have been ordered at different times but are to be served cumulatively or concurrently.

** Persons detained at the Administrator's pleasure.

*** Excluding life sentences and persons detained at the Administrator's pleasure.

There was an 8% increase in the number of sentenced prisoners held on 30 June 2003 compared with 30 June 2002.

24% of the sentenced prisoners held in custody on 30 June 2003 had an aggregate sentence of five years or longer (including life and administrator's pleasure).

There was a 23% decrease in the number of prisoners with aggregate sentences of between two and less than five years on 30 June 2003, compared with the same date of the previous year.

There was a 26% decrease in the median aggregate sentence of persons in custody on 30 June 2003 compared with 30 June 2002.

The median aggregate sentence of sentenced persons held in custody on 30 June 2003 was markedly higher for those in Alice Springs Correctional Centre (546) than for Darwin Correctional Centre (456).

Of those with a sentence of '1<2 years', 16 had an aggregate sentence of one year.

Table 6: Census of prisoners on 30 June 2003 according to prison, last known address and Indigenous status

Region of last known address	Darwin Correctional Centre		Alice Springs Correctional Centre		All		Total	
	Indigenous	Non-Indigenous	Indigenous	Non-Indigenous	Indigenous	Non-Indigenous	2003	2002 *
Alice Springs Urban	4	0	108	7	112	7	119	122
Alice Springs Rural	0	0	24	0	24	0	24	19
Darwin Urban	79	64	18	21	97	85	182	175
Darwin Rural	4	5	0	1	4	6	10	20
Groote Eylandt	19	0	5	1	24	1	25	23
Hermannsburg	2	0	19	0	21	0	21	17
Jabiru	15	0	4	0	19	0	19	17
Katherine Urban	37	1	14	5	51	6	57	34
Katherine Rural	53	2	18	1	71	3	74	33
Nhulunbuy	13	0	0	0	13	0	13	8
Papunya	0	0	13	1	13	1	14	12
Tennant Creek	2	1	53	4	55	5	60	33
Tiwi Islands	11	0	0	0	11	0	11	7
Wadeye	22	0	7	0	29	0	29	32
Yuendumu	0	0	18	0	18	0	18	14
Interstate	3	11	4	6	7	17	24	18
Overseas	0	6	0	12	0	18	18	70
No fixed abode	2	7	0	2	2	9	11	12
Total 30 June 2003	266	97	305	61	571	158	729	
Total 30 June 2002	232	106	226	102	458	208		666

* 2002 figures amended to include urban and rural regions.

On 30 June 2003, persons from the Darwin urban region represented 25% of the total Northern Territory prisoner population.

The number of prisoners from the Katherine rural region increased by 124%, whilst the number of prisoners from overseas decreased by 74%.

The proportion of Indigenous people in custody on this night increased to 78% from 69% the previous year.

Table 7: Census of prisoners on 30 June 2003 according to major offence / charge and sentence status

Offence	Sentenced *		Unsentenced		Total	
	2003	2002	2003	2002	2003	2002
Against the person						
Murder	34	32	11	11	45	43
Attempted murder	0	0	2	2	2	2
Manslaughter	21	17	1	0	22	17
Assault	204	145	57	47	261	192
Sexual assault / offence	56	54	9	6	65	60
Other offences against the person	18	8	7	0	25	8
Robbery						
Armed robbery	11	12	1	0	12	12
Robbery	8	5	4	2	12	7
Property offences						
Break and enter	57	50	9	7	66	57
Fraud and misappropriation	9	6		1	9	7
Stealing / receiving / other theft	14	9	1	3	15	12
Illegal use of motor vehicle	4	18	6	2	10	20
Damage property	8	14	1	2	9	16
Against good order						
Justice procedures	31	29	1	2	32	31
Unlawful possession of weapons	1	2	1	0	2	2
Other offences against good order	2	5	1	6	3	11
Drug Offences						
Possession of drugs	7	6	1	3	8	9
Deal/traffic drugs	14	17	0	0	14	17
Manufacture/grow drugs	3	6	0	0	3	6
Driving offences						
Drive under the influence of alcohol	47	29	1	5	48	34
Driving while disqualified	48	29	0	1	48	30
Other driving	4	3	1	1	5	4
Other offences						
People smuggling	10	69	1	0	11	69
Other	1	0	1	0	2	0
Total	612	565	117	101	729	666

* includes people detained in custody at the Administrator's pleasure and persons in custody for fine default.

The most common offence recorded in IJIS for people held in custody on 30 June 2003 was assault.

The number of prisoners with a most serious offence of 'people smuggling' decreased by 84% from the same time the previous year.

The number of prisoners with a most serious offence of 'assault' increased by 36% from the same time the previous year.

The number of prisoners incarcerated for 'driving offences' increased by 49% from the same time the previous year.

Table 8: Census of prisoners on 30 June 2003 according to prison, Indigenous status and type of sentence

Prison		Unsentenced	Sentenced					Total	
			Fine Default *	Max-Min **	Fixed Term ***	Admin. Pleasure #	Life	2003	2002
Alice Springs Correctional Centre									
	Indigenous	33	0	164	100	1	7	305	226
	Non-Indigenous	6	0	41	5		9	61	102
	Total	39	0	205	105	1	16	366	328
Darwin Correctional Centre									
	Indigenous	62	0	124	71	1	8	266	232
	Non-Indigenous	16	1	58	13	1	8	97	106
	Total	78	1	182	84	2	16	363	338
Total 30 June 2003									
	Indigenous	95	0	288	171	2	15	571	
	Non-Indigenous	22	1	99	18	1	17	158	
	Total	117	1	387	189	3	32	729	
Total 30 June 2002									
	Indigenous	84	0	236	122	2	14		458
	Non-Indigenous	17	0	153	21	1	16		208
	Total	101	0	389	143	3	30		666

* Fine default refers to those persons who are serving a sentence for non-payment of a fine and are subject to no other sentence at the time. Offenders who are serving fine default sentences while on remand are counted as sentenced (fine default) prisoners.

** Max-Min - maximum term specified and minimum term or non parole period set.

*** Fixed term - no post-release follow-up period set.

Detained at the Administrator's pleasure.

The number of life sentenced prisoners in this table differs to that in Table 5 as there are three people with life sentence who have actually been set parole periods as part of their sentence. These have been included in the 'Max-Min' category.

Of those who were unsentenced, 81% were Indigenous which decreased from 83% for the same date last year.

'Max-Min' sentences represented the most common type of sentence.

Non-Indigenous prisoners comprised 10% of those prisoners with fixed term sentences.

Of those prisoners with life sentences or detained at the Administrators Pleasure, 51% were non-Indigenous.

Table 9: Adult prisoner and juvenile detainee turnover statistics during 2002-03

		Indigenous		Non-Indigenous		Total	
		Male	Female	Male	Female	2002-03	2001-02
Held at 30 June 2002	Adult *	451	11	194	10	666	715
	Juvenile	15	0	6	0	21	6
Received during year **	Adult	1594	85	307	26	2012	1739
	Juvenile	142	7	33	0	182	144
Change juvenile to adult ***		3	1	0	0	4	5
Released during year **	Adult	1493	81	349	30	1953	1793
	Juvenile	138	6	32	0	176	124
Held at 30 June 2003	Adult	555	16	152	6	729	666
	Juvenile	16	0	7	0	23	21

* Four prisoners classified as non-Indigenous at 30th June 2002 have since been re-classified as Indigenous.

** Does not include transfers between institutions.

*** Juveniles attaining adult status while detained.

Table 10: Exits from prison according to release reason, institution and Indigenous status during 2002-03

Release Reason	Alice Springs Correctional Centre		Darwin Correctional Centre		All Institutions		Total	
	Indigenous	Non-Indigenous	Indigenous	Non-Indigenous	Indigenous	Non-Indigenous	2002-03	2001-02
Released on bail	12	1	63	17	75	18	93	63
Released ex court	235	6	278	69	513	75	588	489
Fine paid	0	0	0	0	0	0	0	23
Freedom	359	20	233	37	592	57	649	706
Released to parole	25	9	49	12	74	21	95	84
Supervised bond	39	1	132	30	171	31	202	123
Unsupervised bond	57	3	83	53	140	56	196	151
Released to CWO	0	0	1	0	1	0	1	3
Released to Immigration	0	9	1	104	1	113	114	137
Interstate transfer	1	1	1	2	2	3	5	5
Extradited	2	2	1	3	3	5	8	8
Death	0	0	2	0	2	0	2	1
Total 2002-03	730	52	844	327	1574	379	1953	
Total 2001-02	644	42	742	365	1386	407		1793
Prison Total 2002-03		782		1171		1953		
Prison Total 2001-02		686		1107		1793		

There was a 9% increase in the number of exits from prison compared with the previous year.

Table 10a: Exits from juvenile detention centres according to release reason, institution and Indigenous status, during 2002-03

Release Reason	Alice Springs Juvenile Holding		Don Dale Detention Centre		All		Total	
	Indigenous	Non-Indigenous	Indigenous	Non-Indigenous	Indigenous	Non-Indigenous	2002-03	2001-02
Released on bail	3	1	2	1	5	2	7	7
Released ex court	26	0	70	15	96	15	111	76
Fine paid	0	0	0	0	0	0	0	0
Freedom	1	0	22	10	23	10	33	22
Supervised bond	1	0	12	3	13	3	16	14
Unsupervised bond	1	0	3	0	4	0	4	2
Released to CWO	0	0	0	0	0	0	0	0
Released to Immigration	0	0	0	0	0	0	0	0
Death	0	0	0	0	0	0	0	0
Other	1	0	2	2	3	2	5	3
Total 2002-03	33	1	111	31	144	32	176	
Total 2001-02	21	0	67	36	88	36		124
Centre Total 2002-03		34		142		176		
Centre Total 2001-02		21		103		124		

There was a 42% increase in the number of exits from detention centres compared to the previous year.

Table 11: Adult escape and juvenile abscond (incidents and persons) by institution, during 2002-03

		Alice Springs Correctional Centre	Darwin Correctional Centre	Juvenile Detention Centres	Total
Incidents	2002-03	2	0	0	2
	2001-02	2	1	1	4
	2000-01	2	0	0	2
	1999-00	0	0	2	2
	1998-99	0	0	0	0
	1997-98	0	1	1	2
Persons	2002-03	2	0	0	2
	2001-02	2	1	2	5
	2000-01	2	0	0	2
	1999-00	0	0	2	2
	1998-99	0	0	0	0
	1997-98	0	1	2	3

Table 12: Adult prisoners and juvenile detainees received according to institution, sentence status, Indigenous status and gender, during 2002-03

Institution	Sentenced *				Unsentenced				Total	
	Indigenous		Non-Indigenous		Indigenous		Non-Indigenous		2002-03	2001-02
	Female	Male	Female	Male	Female	Male	Female	Male		
Adult Institutions										
Alice Springs Correctional Centre	15	508	1	18	5	251	3	25	826	686
Darwin Correctional Centre	34	501	10	134	31	334	12	130	1186	1053
Total 2002-03	49	1009	11	152	36	585	15	155	2012	
Total 2001-02	49	802	24	178	36	498	12	140		1739
Juvenile Institutions										
Alice Springs Juvenile Holding Centre	3	17	0	0	3	33	0	2	58	31
Don Dale Juvenile Detention Centre	0	24	0	11	1	68	0	20	124	113
Total 2002-03	3	41	0	11	4	101	0	22	182	
Total 2001-02	0	36	0	18	5	62	0	23		144
Total 2002-03	52	1050	11	163	40	686	15	177	2194	
Total 2001-02	49	838	24	196	41	560	12	163		1883

* Sentenced receptions include those episodes that contained sentence or fine default orders.

There was a 17% increase in the total number of receptions (adults and juveniles) compared with the previous year.

Table 13: Distinct persons received into adult institutions according to age *, gender, institution * and Indigenous status, during 2002-03

Age Group	Sex	Alice Springs Correctional Centre		Darwin Correctional Centre		Total	
		Indigenous	Non-Indigenous	Indigenous	Non-Indigenous	2002-03	2001-02
Under 16 years	All	0	0	0	0	0	0
	Male	0	0	0	0	0	0
16 to 17 years	All	3	1	0	0	4	4
	Male	3	1	0	0	4	4
18 to 19 years	All	35	1	65	20	121	103
	Male	35	1	64	19	119	100
20 to 24 years	All	116	7	137	36	296	320
	Male	114	6	131	34	285	307
25 to 29 years	All	142	10	163	46	361	332
	Male	139	10	148	44	341	309
30 to 34 years	All	118	11	125	41	295	282
	Male	114	10	115	38	277	261
35 to 39 years	All	96	7	101	43	247	213
	Male	93	6	91	41	231	188
40 to 44 years	All	65	4	56	28	153	128
	Male	63	3	49	27	142	114
45 to 49 years	All	31	1	19	16	67	62
	Male	28	1	17	13	59	53
50 to 59 years	All	18	1	19	16	54	42
	Male	18	1	18	13	50	39
60 years and older	All	3	1	1	4	9	6
	Male	3	1	1	3	8	5
Total 2002-03	All	627	44	686	250	1607	
	Male	610	40	634	232	1516	
	Female	17	4	52	18	91	
Total 2001-02	All	526	39	634	293		1492
	Male	504	35	579	262		1380
	Female	22	4	55	31		112

* at first reception.

The average age of all prisoners at reception into adult institutions was 31 years, the median age was 29 years.

The oldest person received into an adult institution was 67.

The most common age group of all prisoners at reception into adult institutions was 25-29 (23% of all receptions).

Table 14: Place of origin *, institution ** and Indigenous status for distinct persons received into adult institutions during 2002-03

Place of Origin *	Alice Springs Correctional Centre **		Darwin Correctional Centre **		Total	
	Indigenous	Non-Indigenous	Indigenous	Non-Indigenous	2002-03	2001-02
Australia						
Alice Springs Urban	193	4	20	4	221	173
Alice Springs Rural	102	0	2	0	104	85
Darwin Urban	8	0	222	28	258	229
Darwin Rural	1	0	8	0	9	8
Groote Eylandt	1	0	51	0	52	47
Hermannsburg	45	0	1	0	46	39
Jabiru	0	0	29	0	29	29
Katherine Urban	3	0	70	0	73	66
Katherine Rural	6	0	103	0	109	96
Nhulunbuy	1	0	33	1	35	37
Papunya	60	0	1	0	61	65
Tennant Creek	100	0	18	1	119	69
Tiwi Islands ***	0	0	14	0	14	15
Wadeye	0	0	32	0	32	30
Yuendumu	60	0	8	0	68	70
Interstate	40	23	69	126	258	256
Unknown	7	1	4	4	16	36
Total	627	28	685	164	1504	1350
Overseas						
Indonesia	0	0	0	15	15	57
New Zealand	0	3	0	9	12	10
United Kingdom	0	0	0	17	17	13
Other	0	13	1	45	59	62
Total	0	16	1	86	103	142
Total 2002-03	627	44	686	250	1607	
2001-02	526	39	634	293		1492

* Self reported location of origin, as recorded in IJIS.

** At first reception.

*** In the 2001-02 annual report, prisoners originating in the Tiwi Islands were reported in the Jabiru region.

16% of distinct persons received into an adult correctional centre during the year originated from interstate.

6% of distinct persons received into an adult correctional centre during the year were born overseas, with Vietnam (20) being the most common reported country of birth.

Table 15: Monthly daily average adult prisoner population by prison and sentence status during 2002-03

	Darwin Prison		Alice Springs Prison		All		Total	
	Sentenced	Unsentenced	Sentenced	Unsentenced	Sentenced	Unsentenced	2002-03	2001-02
July	283	63	285	33	568	95	664	687
August	280	64	285	39	565	103	668	668
September	287	68	281	37	568	105	674	661
October	290	78	291	38	581	116	697	697
November	295	82	309	37	605	119	724	699
December	292	75	324	34	616	108	725	698
January	251	79	329	39	581	117	698	656
February	297	89	292	42	589	131	720	644
March	286	94	327	37	613	131	744	657
April	287	94	336	38	623	132	755	658
May	294	104	324	44	619	148	766	662
June	280	88	339	40	619	128	747	664
Yearly	285	81	310	38	596	119	715	671

Note: The figures represent the averages rounded to the nearest integer. Percentages are calculated using the integer values in the table and may be subject to rounding errors.

There was a 7% increase in the yearly daily average compared to the previous year.

Chart 8: Adult prisoner monthly daily averages, 1998-99 to 2002-03.

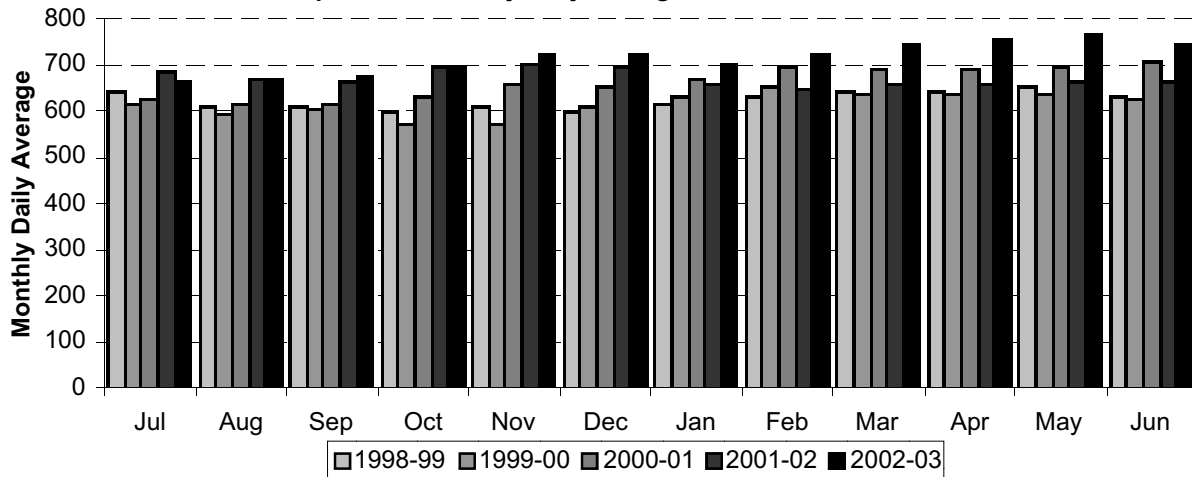


Table 15a: Monthly daily average juvenile detainee population by sentence status, during 2002-03

	Sentenced		Unsentenced		Total	
	2002-03	2001-02	2002-03	2001-02	2002-03	2001-02
July	14	3	6	7	19	9
August	12	3	9	7	21	9
September	9	6	12	5	21	11
October	12	7	14	4	27	12
November	18	9	11	5	29	13
December	18	10	9	6	27	17
January	17	10	9	8	25	18
February	13	13	11	10	24	23
March	10	10	14	7	24	17
April	10	8	10	11	20	19
May	13	13	9	9	23	22
June	15	16	8	7	23	23
Yearly	13	9	10	7	24	16

Note: The figures represent the averages rounded to the nearest integer. Percentages are calculated using the integer values in the table and may be subject to rounding errors.

There was a 44% increase in the yearly daily average for sentenced detainees and a 43% increase in the yearly daily average for unsentenced detainees.

Chart 9: Juvenile detainee monthly daily averages, 1998-99 to 2002-03.

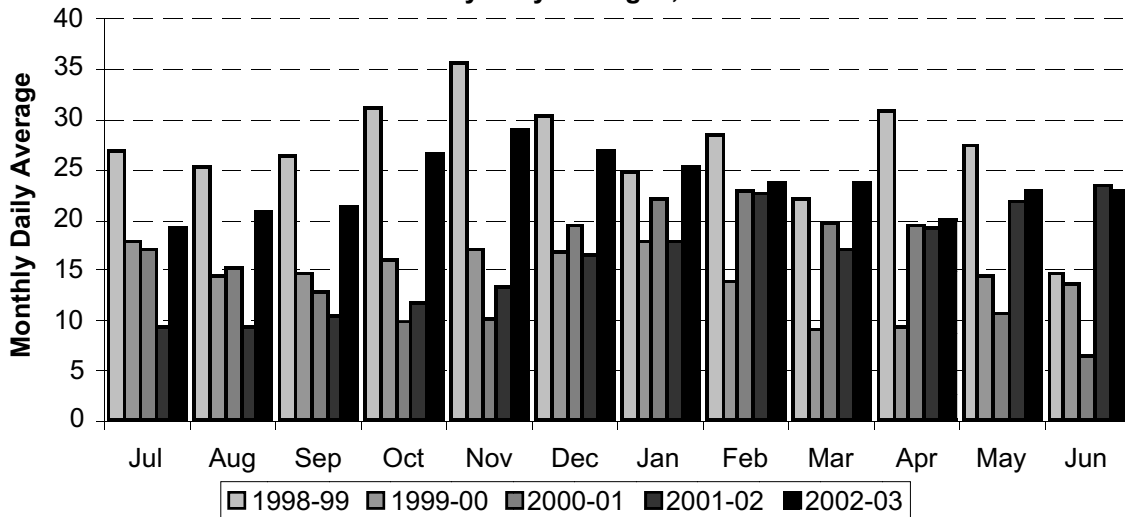


Table 16: Prisoner episodes with first sentence commencing # during 2002-03 according to aggregate sentence length #, most serious offence and Indigenous status

Most Serious Offence	Aggregate Sentence Length										Total					
	Months *				Years *					Average days ***	Median days ***	2002-03		2001-02		
	0 to 1	1 to 3	3 to 6	6 to 12	1 to 2	2 to 5	5 to 10	> 10	Life **			Total	Proportion	Total	Proportion	
Murder																
All	0	0	0	0	0	0	0	0	0	2	0	0	2	0.2%	1	0.1%
Indigenous	0	0	0	0	0	0	0	0	0	1	0	0	1	0.1%	1	0.1%
Assault																
All	41	78	102	122	79	38	6	1	0	346	211	467	36.8%	291	29.1%	
Indigenous	40	77	98	117	77	31	6	1	0	334	209	447	40.7%	263	33.8%	
Sex assault/offences																
All	0	0	0	5	2	11	4	2	0	1466	1087	24	1.9%	21	2.1%	
Indigenous	0	0	0	2	2	9	3	2	0	1645	1277	18	1.6%	12	1.5%	
Other against the person ***																
All	0	0	2	5	9	7	10	1	0	1427	776	34	2.7%	21	2.1%	
Indigenous	0	0	2	5	8	7	7	0	0	1241	730	29	2.6%	19	2.4%	
Robbery																
All	0	1	2	0	4	6	1	0	0	962	820	14	1.1%	11	1.1%	
Indigenous	0	1	2	0	1	1	0	0	0	393	180	5	0.5%	5	0.6%	
Property combined																
All	33	52	38	52	29	19	1	0	0	274	180	224	17.6%	247	24.7%	
Indigenous	31	47	33	45	20	11	0	0	0	223	158	187	17.0%	199	25.6%	
Fraud and misappropriation																
All	4	1	1	3	6	1	0	0	0	355	313	16	1.3%	12	1.2%	
Indigenous	1	0	0	0	0	1	0	0	0	744	744	2	0.2%	2	0.3%	
Driving combined																
All	34	81	104	57	19	0	0	0	0	159	122	295	23.2%	189	18.9%	
Indigenous	30	72	93	51	19	0	0	0	0	162	122	265	24.1%	166	21.4%	
Drugs																
All	2	8	6	9	8	3	0	0	0	356	273	36	2.8%	38	3.8%	
Indigenous	0	2	1	3	2	0	0	0	0	266	238	8	0.7%	7	0.9%	
People smuggling																
All	0	0	0	0	0	0	0	0	0	0	0	0	0.0%	54	5.4%	
Indigenous	0	0	0	0	0	0	0	0	0	0	0	0	0.0%	0	0.0%	
Other *****																
All	54	41	27	22	9	4	1	0	0	150	61	158	12.4%	115	11.5%	
Indigenous	47	34	24	19	9	3	1	0	0	153	61	137	12.5%	103	13.3%	
Total 2002-03																
All	168	262	282	275	165	89	23	4	2	323	180	1270	100.0%			
Indigenous	149	233	253	242	138	63	17	3	1	297	237	1099	100.0%			
Total 2001-02																
All	137	165	211	191	154	113	22	6	1	393	180			1000	100.0%	
Indigenous	121	142	175	161	122	41	13	1	1	290	178			777	100.0%	

Includes all episodes which commenced as sentenced or changed to a sentenced status during 2002-03.

Aggregate sentence determined as the period between the most recent aggregate sentence date (as at 1 July 2003) and the date of reception for the episode.

* The range (X to Y) indicates that the aggregate sentence is greater than the lower bound (X) and up to and including the upper bound (Y).

** Includes Administrator's Pleasure and indefinite sentence.

*** Does not include indeterminate sentences (Life, Administrator's Pleasure and indefinite sentence).

**** Includes manslaughter.

***** Includes prison episodes whose duration largely results from breaches of parole.

Note: The information contained in Table 16 above differs from that in Table 16 in the Northern Territory Department of Justice Statistical Summary 2001-2002. In previous publications, Table 16 included only those episodes in which the sentence start date was in the financial year of interest. This resulted in episodes in which a sentence was backdated to a previous financial year being excluded. This is more likely to occur for episodes which involve long remand periods, which is often associated with more serious crimes. To address this issue, a new approach was adopted this year to record all those episodes which commenced a sentence status during the financial year of interest.

Table 17: Episodes of sentenced prisoners held during 2002-03 according to aggregate sentence length[#], most serious offence and Indigenous status

Most Serious Offence	Aggregate Sentence Length											Total																																																																																																																																																																																																																																																																																																																																																																																																																																																																																																																																																																																																																																																																																															
	Months *				Years *				Average days ***	Median days ***	2002-03		2001-02																																																																																																																																																																																																																																																																																																																																																																																																																																																																																																																																																																																																																																																																																														
	0 to 1	1 to 3	3 to 6	6 to 12	1 to 2	2 to 5	5 to 10	> 10			Life **	Total	Proportion	Total	Proportion																																																																																																																																																																																																																																																																																																																																																																																																																																																																																																																																																																																																																																																																																												
Murder																				All	0	0	0	0	0	0	0	0	0	34	0	0	34	1.9%	32	2.0%	Indigenous	0	0	0	0	0	0	0	0	0	16	0	0	16	1.1%	15	1.3%	Assault																				All	43	80	121	147	134	70	15	5	0	452	270	615	33.5%	408	26.0%	Indigenous	42	78	115	141	126	60	13	3	0	422	254	578	39.2%	374	32.9%	Sex assault/offences																				All	0	0	0	5	4	16	31	10	1	2364	2218	67	3.7%	72	4.6%	Indigenous	0	0	0	2	4	11	23	9	1	2443	2369	50	3.4%	51	4.5%	Other against the person ****																				All	0	0	2	6	10	14	25	4	0	1882	1694	61	3.3%	50	3.2%	Indigenous	0	0	2	6	9	14	18	3	0	1720	1235	52	3.5%	41	3.6%	Robbery																				All	0	1	2	0	4	16	7	0	0	1391	1377	30	1.6%	33	2.1%	Indigenous	0	1	2	0	1	7	1	0	0	900	898	12	0.8%	12	1.1%	Property combined																				All	34	54	56	74	59	38	6	2	0	419	239	323	17.6%	335	21.4%	Indigenous	32	49	49	64	44	24	4	1	0	361	211	267	18.1%	269	23.7%	Fraud and misappropriation																				All	4	1	2	3	7	3	0	1	0	636	387	21	1.1%	14	0.9%	Indigenous	1	0	0	0	0	1	0	0	0	744	744	2	0.1%	3	0.3%	Driving combined																				All	34	90	126	70	34	3	0	0	0	181	149	357	19.5%	259	16.5%	Indigenous	30	79	114	62	34	2	0	0	0	183	149	321	21.7%	229	20.1%	Drugs																				All	3	10	9	10	11	8	5	5	3	1079	365	64	3.5%	59	3.8%	Indigenous	0	3	2	3	2	0	0	0	0	237	191	10	0.7%	8	0.7%	People smuggling																				All	0	0	0	0	0	60	7	0	0	1375	1272	67	3.7%	147	9.4%	Indigenous	0	0	0	0	0	0	0	0	0	0	0	0	0.0%	0	0.0%	Other *****																				All	57	42	32	36	11	11	3	2	1	267	91	195	10.6%	158	10.1%	Indigenous	50	35	28	33	10	7	3	1	1	243	91	168	11.4%	135	11.9%	Total 2002-03																				All	175	278	350	351	274	239	99	29	39	565	241	1834	100.0%						Indigenous	155	245	312	311	230	126	62	17	18	455	209	1476	100.0%						Total 2001-02																				All	152	195	266	274	249	274	92	28	37	633	272			1567	100.0%	Indigenous	131	168	220	238	197	98	53	15	17	482	209			1137	100.0%
All	0	0	0	0	0	0	0	0	0	34	0	0	34	1.9%	32	2.0%																																																																																																																																																																																																																																																																																																																																																																																																																																																																																																																																																																																																																																																																																											
Indigenous	0	0	0	0	0	0	0	0	0	16	0	0	16	1.1%	15	1.3%																																																																																																																																																																																																																																																																																																																																																																																																																																																																																																																																																																																																																																																																																											
Assault																				All	43	80	121	147	134	70	15	5	0	452	270	615	33.5%	408	26.0%	Indigenous	42	78	115	141	126	60	13	3	0	422	254	578	39.2%	374	32.9%	Sex assault/offences																				All	0	0	0	5	4	16	31	10	1	2364	2218	67	3.7%	72	4.6%	Indigenous	0	0	0	2	4	11	23	9	1	2443	2369	50	3.4%	51	4.5%	Other against the person ****																				All	0	0	2	6	10	14	25	4	0	1882	1694	61	3.3%	50	3.2%	Indigenous	0	0	2	6	9	14	18	3	0	1720	1235	52	3.5%	41	3.6%	Robbery																				All	0	1	2	0	4	16	7	0	0	1391	1377	30	1.6%	33	2.1%	Indigenous	0	1	2	0	1	7	1	0	0	900	898	12	0.8%	12	1.1%	Property combined																				All	34	54	56	74	59	38	6	2	0	419	239	323	17.6%	335	21.4%	Indigenous	32	49	49	64	44	24	4	1	0	361	211	267	18.1%	269	23.7%	Fraud and misappropriation																				All	4	1	2	3	7	3	0	1	0	636	387	21	1.1%	14	0.9%	Indigenous	1	0	0	0	0	1	0	0	0	744	744	2	0.1%	3	0.3%	Driving combined																				All	34	90	126	70	34	3	0	0	0	181	149	357	19.5%	259	16.5%	Indigenous	30	79	114	62	34	2	0	0	0	183	149	321	21.7%	229	20.1%	Drugs																				All	3	10	9	10	11	8	5	5	3	1079	365	64	3.5%	59	3.8%	Indigenous	0	3	2	3	2	0	0	0	0	237	191	10	0.7%	8	0.7%	People smuggling																				All	0	0	0	0	0	60	7	0	0	1375	1272	67	3.7%	147	9.4%	Indigenous	0	0	0	0	0	0	0	0	0	0	0	0	0.0%	0	0.0%	Other *****																				All	57	42	32	36	11	11	3	2	1	267	91	195	10.6%	158	10.1%	Indigenous	50	35	28	33	10	7	3	1	1	243	91	168	11.4%	135	11.9%	Total 2002-03																				All	175	278	350	351	274	239	99	29	39	565	241	1834	100.0%						Indigenous	155	245	312	311	230	126	62	17	18	455	209	1476	100.0%						Total 2001-02																				All	152	195	266	274	249	274	92	28	37	633	272			1567	100.0%	Indigenous	131	168	220	238	197	98	53	15	17	482	209			1137	100.0%																																																						
All	43	80	121	147	134	70	15	5	0	452	270	615	33.5%	408	26.0%																																																																																																																																																																																																																																																																																																																																																																																																																																																																																																																																																																																																																																																																																												
Indigenous	42	78	115	141	126	60	13	3	0	422	254	578	39.2%	374	32.9%																																																																																																																																																																																																																																																																																																																																																																																																																																																																																																																																																																																																																																																																																												
Sex assault/offences																				All	0	0	0	5	4	16	31	10	1	2364	2218	67	3.7%	72	4.6%	Indigenous	0	0	0	2	4	11	23	9	1	2443	2369	50	3.4%	51	4.5%	Other against the person ****																				All	0	0	2	6	10	14	25	4	0	1882	1694	61	3.3%	50	3.2%	Indigenous	0	0	2	6	9	14	18	3	0	1720	1235	52	3.5%	41	3.6%	Robbery																				All	0	1	2	0	4	16	7	0	0	1391	1377	30	1.6%	33	2.1%	Indigenous	0	1	2	0	1	7	1	0	0	900	898	12	0.8%	12	1.1%	Property combined																				All	34	54	56	74	59	38	6	2	0	419	239	323	17.6%	335	21.4%	Indigenous	32	49	49	64	44	24	4	1	0	361	211	267	18.1%	269	23.7%	Fraud and misappropriation																				All	4	1	2	3	7	3	0	1	0	636	387	21	1.1%	14	0.9%	Indigenous	1	0	0	0	0	1	0	0	0	744	744	2	0.1%	3	0.3%	Driving combined																				All	34	90	126	70	34	3	0	0	0	181	149	357	19.5%	259	16.5%	Indigenous	30	79	114	62	34	2	0	0	0	183	149	321	21.7%	229	20.1%	Drugs																				All	3	10	9	10	11	8	5	5	3	1079	365	64	3.5%	59	3.8%	Indigenous	0	3	2	3	2	0	0	0	0	237	191	10	0.7%	8	0.7%	People smuggling																				All	0	0	0	0	0	60	7	0	0	1375	1272	67	3.7%	147	9.4%	Indigenous	0	0	0	0	0	0	0	0	0	0	0	0	0.0%	0	0.0%	Other *****																				All	57	42	32	36	11	11	3	2	1	267	91	195	10.6%	158	10.1%	Indigenous	50	35	28	33	10	7	3	1	1	243	91	168	11.4%	135	11.9%	Total 2002-03																				All	175	278	350	351	274	239	99	29	39	565	241	1834	100.0%						Indigenous	155	245	312	311	230	126	62	17	18	455	209	1476	100.0%						Total 2001-02																				All	152	195	266	274	249	274	92	28	37	633	272			1567	100.0%	Indigenous	131	168	220	238	197	98	53	15	17	482	209			1137	100.0%																																																																																																										
All	0	0	0	5	4	16	31	10	1	2364	2218	67	3.7%	72	4.6%																																																																																																																																																																																																																																																																																																																																																																																																																																																																																																																																																																																																																																																																																												
Indigenous	0	0	0	2	4	11	23	9	1	2443	2369	50	3.4%	51	4.5%																																																																																																																																																																																																																																																																																																																																																																																																																																																																																																																																																																																																																																																																																												
Other against the person ****																				All	0	0	2	6	10	14	25	4	0	1882	1694	61	3.3%	50	3.2%	Indigenous	0	0	2	6	9	14	18	3	0	1720	1235	52	3.5%	41	3.6%	Robbery																				All	0	1	2	0	4	16	7	0	0	1391	1377	30	1.6%	33	2.1%	Indigenous	0	1	2	0	1	7	1	0	0	900	898	12	0.8%	12	1.1%	Property combined																				All	34	54	56	74	59	38	6	2	0	419	239	323	17.6%	335	21.4%	Indigenous	32	49	49	64	44	24	4	1	0	361	211	267	18.1%	269	23.7%	Fraud and misappropriation																				All	4	1	2	3	7	3	0	1	0	636	387	21	1.1%	14	0.9%	Indigenous	1	0	0	0	0	1	0	0	0	744	744	2	0.1%	3	0.3%	Driving combined																				All	34	90	126	70	34	3	0	0	0	181	149	357	19.5%	259	16.5%	Indigenous	30	79	114	62	34	2	0	0	0	183	149	321	21.7%	229	20.1%	Drugs																				All	3	10	9	10	11	8	5	5	3	1079	365	64	3.5%	59	3.8%	Indigenous	0	3	2	3	2	0	0	0	0	237	191	10	0.7%	8	0.7%	People smuggling																				All	0	0	0	0	0	60	7	0	0	1375	1272	67	3.7%	147	9.4%	Indigenous	0	0	0	0	0	0	0	0	0	0	0	0	0.0%	0	0.0%	Other *****																				All	57	42	32	36	11	11	3	2	1	267	91	195	10.6%	158	10.1%	Indigenous	50	35	28	33	10	7	3	1	1	243	91	168	11.4%	135	11.9%	Total 2002-03																				All	175	278	350	351	274	239	99	29	39	565	241	1834	100.0%						Indigenous	155	245	312	311	230	126	62	17	18	455	209	1476	100.0%						Total 2001-02																				All	152	195	266	274	249	274	92	28	37	633	272			1567	100.0%	Indigenous	131	168	220	238	197	98	53	15	17	482	209			1137	100.0%																																																																																																																																																														
All	0	0	2	6	10	14	25	4	0	1882	1694	61	3.3%	50	3.2%																																																																																																																																																																																																																																																																																																																																																																																																																																																																																																																																																																																																																																																																																												
Indigenous	0	0	2	6	9	14	18	3	0	1720	1235	52	3.5%	41	3.6%																																																																																																																																																																																																																																																																																																																																																																																																																																																																																																																																																																																																																																																																																												
Robbery																				All	0	1	2	0	4	16	7	0	0	1391	1377	30	1.6%	33	2.1%	Indigenous	0	1	2	0	1	7	1	0	0	900	898	12	0.8%	12	1.1%	Property combined																				All	34	54	56	74	59	38	6	2	0	419	239	323	17.6%	335	21.4%	Indigenous	32	49	49	64	44	24	4	1	0	361	211	267	18.1%	269	23.7%	Fraud and misappropriation																				All	4	1	2	3	7	3	0	1	0	636	387	21	1.1%	14	0.9%	Indigenous	1	0	0	0	0	1	0	0	0	744	744	2	0.1%	3	0.3%	Driving combined																				All	34	90	126	70	34	3	0	0	0	181	149	357	19.5%	259	16.5%	Indigenous	30	79	114	62	34	2	0	0	0	183	149	321	21.7%	229	20.1%	Drugs																				All	3	10	9	10	11	8	5	5	3	1079	365	64	3.5%	59	3.8%	Indigenous	0	3	2	3	2	0	0	0	0	237	191	10	0.7%	8	0.7%	People smuggling																				All	0	0	0	0	0	60	7	0	0	1375	1272	67	3.7%	147	9.4%	Indigenous	0	0	0	0	0	0	0	0	0	0	0	0	0.0%	0	0.0%	Other *****																				All	57	42	32	36	11	11	3	2	1	267	91	195	10.6%	158	10.1%	Indigenous	50	35	28	33	10	7	3	1	1	243	91	168	11.4%	135	11.9%	Total 2002-03																				All	175	278	350	351	274	239	99	29	39	565	241	1834	100.0%						Indigenous	155	245	312	311	230	126	62	17	18	455	209	1476	100.0%						Total 2001-02																				All	152	195	266	274	249	274	92	28	37	633	272			1567	100.0%	Indigenous	131	168	220	238	197	98	53	15	17	482	209			1137	100.0%																																																																																																																																																																																																																		
All	0	1	2	0	4	16	7	0	0	1391	1377	30	1.6%	33	2.1%																																																																																																																																																																																																																																																																																																																																																																																																																																																																																																																																																																																																																																																																																												
Indigenous	0	1	2	0	1	7	1	0	0	900	898	12	0.8%	12	1.1%																																																																																																																																																																																																																																																																																																																																																																																																																																																																																																																																																																																																																																																																																												
Property combined																				All	34	54	56	74	59	38	6	2	0	419	239	323	17.6%	335	21.4%	Indigenous	32	49	49	64	44	24	4	1	0	361	211	267	18.1%	269	23.7%	Fraud and misappropriation																				All	4	1	2	3	7	3	0	1	0	636	387	21	1.1%	14	0.9%	Indigenous	1	0	0	0	0	1	0	0	0	744	744	2	0.1%	3	0.3%	Driving combined																				All	34	90	126	70	34	3	0	0	0	181	149	357	19.5%	259	16.5%	Indigenous	30	79	114	62	34	2	0	0	0	183	149	321	21.7%	229	20.1%	Drugs																				All	3	10	9	10	11	8	5	5	3	1079	365	64	3.5%	59	3.8%	Indigenous	0	3	2	3	2	0	0	0	0	237	191	10	0.7%	8	0.7%	People smuggling																				All	0	0	0	0	0	60	7	0	0	1375	1272	67	3.7%	147	9.4%	Indigenous	0	0	0	0	0	0	0	0	0	0	0	0	0.0%	0	0.0%	Other *****																				All	57	42	32	36	11	11	3	2	1	267	91	195	10.6%	158	10.1%	Indigenous	50	35	28	33	10	7	3	1	1	243	91	168	11.4%	135	11.9%	Total 2002-03																				All	175	278	350	351	274	239	99	29	39	565	241	1834	100.0%						Indigenous	155	245	312	311	230	126	62	17	18	455	209	1476	100.0%						Total 2001-02																				All	152	195	266	274	249	274	92	28	37	633	272			1567	100.0%	Indigenous	131	168	220	238	197	98	53	15	17	482	209			1137	100.0%																																																																																																																																																																																																																																																																						
All	34	54	56	74	59	38	6	2	0	419	239	323	17.6%	335	21.4%																																																																																																																																																																																																																																																																																																																																																																																																																																																																																																																																																																																																																																																																																												
Indigenous	32	49	49	64	44	24	4	1	0	361	211	267	18.1%	269	23.7%																																																																																																																																																																																																																																																																																																																																																																																																																																																																																																																																																																																																																																																																																												
Fraud and misappropriation																				All	4	1	2	3	7	3	0	1	0	636	387	21	1.1%	14	0.9%	Indigenous	1	0	0	0	0	1	0	0	0	744	744	2	0.1%	3	0.3%	Driving combined																				All	34	90	126	70	34	3	0	0	0	181	149	357	19.5%	259	16.5%	Indigenous	30	79	114	62	34	2	0	0	0	183	149	321	21.7%	229	20.1%	Drugs																				All	3	10	9	10	11	8	5	5	3	1079	365	64	3.5%	59	3.8%	Indigenous	0	3	2	3	2	0	0	0	0	237	191	10	0.7%	8	0.7%	People smuggling																				All	0	0	0	0	0	60	7	0	0	1375	1272	67	3.7%	147	9.4%	Indigenous	0	0	0	0	0	0	0	0	0	0	0	0	0.0%	0	0.0%	Other *****																				All	57	42	32	36	11	11	3	2	1	267	91	195	10.6%	158	10.1%	Indigenous	50	35	28	33	10	7	3	1	1	243	91	168	11.4%	135	11.9%	Total 2002-03																				All	175	278	350	351	274	239	99	29	39	565	241	1834	100.0%						Indigenous	155	245	312	311	230	126	62	17	18	455	209	1476	100.0%						Total 2001-02																				All	152	195	266	274	249	274	92	28	37	633	272			1567	100.0%	Indigenous	131	168	220	238	197	98	53	15	17	482	209			1137	100.0%																																																																																																																																																																																																																																																																																																																										
All	4	1	2	3	7	3	0	1	0	636	387	21	1.1%	14	0.9%																																																																																																																																																																																																																																																																																																																																																																																																																																																																																																																																																																																																																																																																																												
Indigenous	1	0	0	0	0	1	0	0	0	744	744	2	0.1%	3	0.3%																																																																																																																																																																																																																																																																																																																																																																																																																																																																																																																																																																																																																																																																																												
Driving combined																				All	34	90	126	70	34	3	0	0	0	181	149	357	19.5%	259	16.5%	Indigenous	30	79	114	62	34	2	0	0	0	183	149	321	21.7%	229	20.1%	Drugs																				All	3	10	9	10	11	8	5	5	3	1079	365	64	3.5%	59	3.8%	Indigenous	0	3	2	3	2	0	0	0	0	237	191	10	0.7%	8	0.7%	People smuggling																				All	0	0	0	0	0	60	7	0	0	1375	1272	67	3.7%	147	9.4%	Indigenous	0	0	0	0	0	0	0	0	0	0	0	0	0.0%	0	0.0%	Other *****																				All	57	42	32	36	11	11	3	2	1	267	91	195	10.6%	158	10.1%	Indigenous	50	35	28	33	10	7	3	1	1	243	91	168	11.4%	135	11.9%	Total 2002-03																				All	175	278	350	351	274	239	99	29	39	565	241	1834	100.0%						Indigenous	155	245	312	311	230	126	62	17	18	455	209	1476	100.0%						Total 2001-02																				All	152	195	266	274	249	274	92	28	37	633	272			1567	100.0%	Indigenous	131	168	220	238	197	98	53	15	17	482	209			1137	100.0%																																																																																																																																																																																																																																																																																																																																																																														
All	34	90	126	70	34	3	0	0	0	181	149	357	19.5%	259	16.5%																																																																																																																																																																																																																																																																																																																																																																																																																																																																																																																																																																																																																																																																																												
Indigenous	30	79	114	62	34	2	0	0	0	183	149	321	21.7%	229	20.1%																																																																																																																																																																																																																																																																																																																																																																																																																																																																																																																																																																																																																																																																																												
Drugs																				All	3	10	9	10	11	8	5	5	3	1079	365	64	3.5%	59	3.8%	Indigenous	0	3	2	3	2	0	0	0	0	237	191	10	0.7%	8	0.7%	People smuggling																				All	0	0	0	0	0	60	7	0	0	1375	1272	67	3.7%	147	9.4%	Indigenous	0	0	0	0	0	0	0	0	0	0	0	0	0.0%	0	0.0%	Other *****																				All	57	42	32	36	11	11	3	2	1	267	91	195	10.6%	158	10.1%	Indigenous	50	35	28	33	10	7	3	1	1	243	91	168	11.4%	135	11.9%	Total 2002-03																				All	175	278	350	351	274	239	99	29	39	565	241	1834	100.0%						Indigenous	155	245	312	311	230	126	62	17	18	455	209	1476	100.0%						Total 2001-02																				All	152	195	266	274	249	274	92	28	37	633	272			1567	100.0%	Indigenous	131	168	220	238	197	98	53	15	17	482	209			1137	100.0%																																																																																																																																																																																																																																																																																																																																																																																																																																		
All	3	10	9	10	11	8	5	5	3	1079	365	64	3.5%	59	3.8%																																																																																																																																																																																																																																																																																																																																																																																																																																																																																																																																																																																																																																																																																												
Indigenous	0	3	2	3	2	0	0	0	0	237	191	10	0.7%	8	0.7%																																																																																																																																																																																																																																																																																																																																																																																																																																																																																																																																																																																																																																																																																												
People smuggling																				All	0	0	0	0	0	60	7	0	0	1375	1272	67	3.7%	147	9.4%	Indigenous	0	0	0	0	0	0	0	0	0	0	0	0	0.0%	0	0.0%	Other *****																				All	57	42	32	36	11	11	3	2	1	267	91	195	10.6%	158	10.1%	Indigenous	50	35	28	33	10	7	3	1	1	243	91	168	11.4%	135	11.9%	Total 2002-03																				All	175	278	350	351	274	239	99	29	39	565	241	1834	100.0%						Indigenous	155	245	312	311	230	126	62	17	18	455	209	1476	100.0%						Total 2001-02																				All	152	195	266	274	249	274	92	28	37	633	272			1567	100.0%	Indigenous	131	168	220	238	197	98	53	15	17	482	209			1137	100.0%																																																																																																																																																																																																																																																																																																																																																																																																																																																																																						
All	0	0	0	0	0	60	7	0	0	1375	1272	67	3.7%	147	9.4%																																																																																																																																																																																																																																																																																																																																																																																																																																																																																																																																																																																																																																																																																												
Indigenous	0	0	0	0	0	0	0	0	0	0	0	0	0.0%	0	0.0%																																																																																																																																																																																																																																																																																																																																																																																																																																																																																																																																																																																																																																																																																												
Other *****																				All	57	42	32	36	11	11	3	2	1	267	91	195	10.6%	158	10.1%	Indigenous	50	35	28	33	10	7	3	1	1	243	91	168	11.4%	135	11.9%	Total 2002-03																				All	175	278	350	351	274	239	99	29	39	565	241	1834	100.0%						Indigenous	155	245	312	311	230	126	62	17	18	455	209	1476	100.0%						Total 2001-02																				All	152	195	266	274	249	274	92	28	37	633	272			1567	100.0%	Indigenous	131	168	220	238	197	98	53	15	17	482	209			1137	100.0%																																																																																																																																																																																																																																																																																																																																																																																																																																																																																																																																										
All	57	42	32	36	11	11	3	2	1	267	91	195	10.6%	158	10.1%																																																																																																																																																																																																																																																																																																																																																																																																																																																																																																																																																																																																																																																																																												
Indigenous	50	35	28	33	10	7	3	1	1	243	91	168	11.4%	135	11.9%																																																																																																																																																																																																																																																																																																																																																																																																																																																																																																																																																																																																																																																																																												
Total 2002-03																				All	175	278	350	351	274	239	99	29	39	565	241	1834	100.0%						Indigenous	155	245	312	311	230	126	62	17	18	455	209	1476	100.0%						Total 2001-02																				All	152	195	266	274	249	274	92	28	37	633	272			1567	100.0%	Indigenous	131	168	220	238	197	98	53	15	17	482	209			1137	100.0%																																																																																																																																																																																																																																																																																																																																																																																																																																																																																																																																																																																														
All	175	278	350	351	274	239	99	29	39	565	241	1834	100.0%																																																																																																																																																																																																																																																																																																																																																																																																																																																																																																																																																																																																																																																																																														
Indigenous	155	245	312	311	230	126	62	17	18	455	209	1476	100.0%																																																																																																																																																																																																																																																																																																																																																																																																																																																																																																																																																																																																																																																																																														
Total 2001-02																				All	152	195	266	274	249	274	92	28	37	633	272			1567	100.0%	Indigenous	131	168	220	238	197	98	53	15	17	482	209			1137	100.0%																																																																																																																																																																																																																																																																																																																																																																																																																																																																																																																																																																																																																																																								
All	152	195	266	274	249	274	92	28	37	633	272			1567	100.0%																																																																																																																																																																																																																																																																																																																																																																																																																																																																																																																																																																																																																																																																																												
Indigenous	131	168	220	238	197	98	53	15	17	482	209			1137	100.0%																																																																																																																																																																																																																																																																																																																																																																																																																																																																																																																																																																																																																																																																																												

Aggregate sentence determined as the period between the most recent aggregate sentence date (as at 1 July 2003) and the date of reception for the episode.

* The range (X to Y) indicates that the aggregate sentence is greater than the lower bound (X) and up to and including the upper bound (Y).

** Includes Administrator's Pleasure and indefinite sentence.

*** Does not include indeterminate sentences (Life, Administrator's Pleasure and indefinite sentence).

**** Includes manslaughter.

***** Includes prison episodes whose duration largely results from breaches of parole.

Note: The classification method for aggregate sentence length has changed such that there are significant differences to those published for Table 17 in previous years. Hence no comparison can be made with previous publications.

Table 18: Juvenile order type commencements and distinct episode commencements according to Indigenous status and gender, during 2002-03

Order Type	Indigenous		Non-Indigenous		Total	
	Male	Female	Male	Female	2002-03	2001-02
Sentenced/Detention	41	3	14	0	58	55
Fine Default	1	0	0	0	1	4
Remand *	113	4	21	0	138	104
Immigration	0	0	0	0	0	0
Total 2002-03	155	7	35	0	197	
Total 2001-02	112	5	46	0		163
Distinct episodes 2002-03	142	7	33	0	182	
Distinct episodes 2001-02	98	5	41	0		144

* Includes holding orders

Note: It is common for more than one type of order to commence during an episode, consequently the total number of order type commencements may exceed the number of distinct episodes.

70% of the orders were for remand.

78% of the distinct episodes commenced were for Indigenous male juveniles.

Table 19: Last known address, age at first commencement and Indigenous status for distinct persons received into juvenile institutions during 2002-03.

Last Known Address *	Indigenous Status	Age Group (Years)					Total	
		10-12	13-14	15-16	17	18>	2002-03	2001-02
Alice Springs Urban	All	0	0	6	4	1	11	9
	Indigenous	0	0	6	4	1	11	9
Alice Springs Rural	All	0	0	3	4	0	7	4
	Indigenous	0	0	3	4	0	7	4
Darwin Urban	All	1	5	10	11	0	27	37
	Indigenous	1	3	6	5	0	15	18
Darwin Rural	All	0	0	4	0	0	4	2
	Indigenous	0	0	1	0	0	1	1
Groote Eylandt	All	0	0	0	4	0	4	3
	Indigenous	0	0	0	4	0	4	3
Jabiru	All	0	1	7	1	0	9	4
	Indigenous	0	1	7	1	0	9	4
Katherine Urban	All	0	2	5	3	0	10	10
	Indigenous	0	1	5	3	0	9	7
Katherine Rural	All	0	1	3	0	0	4	3
	Indigenous	0	1	3	0	0	4	3
Nhulunbuy	All	0	0	1	0	0	1	1
	Indigenous	0	0	1	0	0	1	1
Tennant Creek	All	1	4	5	4	0	14	6
	Indigenous	1	4	3	4	0	12	5
Tiwi Islands	All	0	0	1	0	0	1	0
	Indigenous	0	0	1	0	0	1	0
Wadeye	All	0	0	7	7	0	14	10
	Indigenous	0	0	7	7	0	14	10
Other	All	0	0	1	0	0	1	1
	Indigenous	0	0	1	0	0	1	1
Foreign	All	0	0	0	0	0	0	1
	Indonesia	0	0	0	0	0	0	1
Total 2002-03	All	2	13	53	38	1	107	
	Indigenous	2	10	44	32	1	89	
% Indigenous		100%	77%	83%	84%	100%	83%	
Total 2001-02	All	0	12	45	34	0		91
	Indigenous	0	9	35	22	0		66
% Indigenous			75%	78%	65%			73%

* Last known address - as recorded in IJIS and aggregated into reporting districts.

Table 20: Juvenile detention episode commencements according to most serious offence *, during 2002-03

Offence Group	Age Group (Years) **			Total	
	10-14	15-16	17	2002-03	2001-02
Against the person					
Homicide	0	1	0	1	3
Assault	8	33	18	59	35
Sexual assault	0	1	0	1	2
Total	8	35	18	61	40
Robbery	0	8	6	14	3
Property offences					
Break and enter	9	42	33	84	64
Fraud	0	0	0	0	0
Stealing	2	2	0	4	5
Unlawful use of motor vehicle	0	1	5	6	11
Property damage	2	3	2	7	10
Property other	1	0	0	1	0
Total	14	48	40	102	89
Against good order					
Justice offences	1	2	0	3	2
Good order	0	0	0	0	5
Total	1	2	0	3	7
Drug offences	0	0	0	0	1
Driving offences					
Drive under the influence of alcohol	0	0	0	0	0
Other driving / traffic offences	0	0	1	1	2
Total	0	0	1	1	2
Other	0	0	1	1	1
Total 2002-03	23	93	66	182	
Total 2001-02	21	76	47		144

* Most Serious Offence, as recorded in IJIS.

** Age in years at reception.

Note: Remand and holding episodes are included in the table. A juvenile may commence several short remand or holding episodes for the same MSO without being convicted.

Table 21: Adult* conditional liberty caseload according to office, Indigenous status and program, as at 30 June 2003

Office		Program								Total	
		Pre Parole	Pre Probation	Life Sentenced Prisoners	Parole	Probation	Home Detention	Community Work Order	Other **	2003	2002
Alice Springs	All	127	13	16	35	84	11	84	7	377	355
	Indigenous	109	11	5	24	63	5	74	6	297	279
Casuarina	All	69	34	18	49	202	28	49	26	475	386
	Indigenous	35	24	8	12	110	6	26	13	234	147
Groote Eylandt	All	16	8	0	14	28	10	29	6	111	44
	Indigenous	16	8	0	14	28	10	28	6	110	44
Jabiru ...	All	0	0	0	0	1	1	15	0	17	18
	Indigenous	0	0	0	0	1	1	15	0	17	17
Katherine	All	23	14	0	13	117	2	55	12	236	267
	Indigenous	23	14	0	13	99	1	52	11	213	242
Nhulunbuy	All	1	1	0	6	13	0	6	0	27	29
	Indigenous	1	1	0	4	13	0	5	0	24	25
Palmerston ...	All	16	6	0	20	50	0	5	12	109	157
	Indigenous	10	4	0	7	23	0	5	6	55	115
Tennant Creek	All	19	0	0	4	18	0	29	4	74	35
	Indigenous	19	0	0	2	15	0	28	3	67	32
Wadeye	All	8	2	0	6	20	0	20	0	56	18
	Indigenous	8	2	0	6	20	0	20	0	56	18
Total 30 June 2003	All	279	78	34	147	533	52	292	67	1482	
	Indigenous	221	64	13	82	372	23	253	45	1073	
Total 30 June 2002	All	228	62	32	164	448	32	290	53		1309
	Indigenous	165	52	13	95	288	17	249	40		919

* - Based on age at commencement of program.

** - "Other" programs include such items as pre-sentence reports, home detention assessments and bail assessments.

*** - The figures for Palmerston includes a number of programs and persons supervised at Jabiru.

Note: Programs in Breach with expected end-dates greater than three years prior to 30 June 2003 are not included.

Table 22: Juvenile* conditional liberty caseload according to office, Indigenous status and program, as at 30 June 2003.

Office		Program						Total	
		Pre Probation	Probation	Diversion	Periodic Detention	Community Work Order	Other **	2003	2002
Alice Springs	All	2	23	0	0	9	1	35	26
	Indigenous	2	20	0	0	8	1	31	22
Casuarina	All	3	38	0	1	29	1	72	71
	Indigenous	1	23	0	0	19	0	43	32
Groote Eylandt	All	0	5	0	0	4	1	10	9
	Indigenous	0	5	0	0	4	1	10	9
Jabiru ...	All	0	0	0	0	0	0	0	1
	Indigenous	0	0	0	0	0	0	0	1
Katherine	All	2	18	0	0	4	0	24	31
	Indigenous	1	15	0	0	4	0	20	27
Nhulunbuy	All	0	0	0	0	0	0	0	1
	Indigenous	0	0	0	0	0	0	0	1
Palmerston ...	All	1	10	0	0	1	0	12	17
	Indigenous	0	6	0	0	1	0	7	13
Tennant Creek	All	0	9	0	0	6	0	15	16
	Indigenous	0	9	0	0	6	0	15	14
Wadeye	All	1	12	0	0	13	1	27	7
	Indigenous	1	12	0	0	13	1	27	7
Total 30 June 2003	All	9	115	0	1	66	4	195	
	Indigenous	5	90	0	0	55	3	153	
Total 30 June 2002	All	4	113	2	0	51	9		179
	Indigenous	1	78	0	0	40	7		126

* Based on age at commencement of program.

** "Other" programs include such items as pre-sentence reports, home detention assessments and bail assessments.

*** The figures for Palmerston includes a number of programs and persons supervised at Jabiru.

Note: Programs in Breach with expected end-dates greater than three years prior to 30 June 2003 are not included.

Table 23: Conditional liberty program completions, during 2002-03

Program	Completions				Success Rate **	
	Successful	Unsuccessful	Other *	Total	2002-03	2001-02
Community work orders						
Adult	291	94	4	389	76%	60%
Juvenile	54	18	0	72	75%	60%
Home detention	88	18	1	107	83%	86%
Parole	61	41	7	109	60%	72%
Probation						
Adult	178	102	18	298	64%	78%
Juvenile	54	35	0	89	61%	72%
Total 2002-03	726	308	30	1064	70%	
Total 2001-02	981	514	30	1525		66%

* Includes interstate transfers, time in custody and deaths.

** Success rate expressed as a proportion of successful and unsuccessful completions only.

Table 24: Adult and juvenile conditional liberty commencements according to program, Indigenous status and sex, during 2002-03

Order	Indigenous		Non-Indigenous		Unknown		Total	
	Female	Male	Female	Male	Female	Male	2002-03	2001-02
Community work order								
Adult	36	288	10	52	0	0	386	811
Juvenile	8	57	1	19	0	0	85	50
Home detention order	9	61	9	47	0	0	126	61
Parole	1	73	1	26	0	1	102	102
Probation								
Adult	36	263	9	75	1	0	384	283
Juvenile	6	76	1	14	0	0	97	68
Diversiory order	0	0	0	0	0	0	0	1
Total 2002-03	96	818	31	233	1	1	1180	
Total 2001-02	103	947	48	269	5	4		1376

Table 25: Distinct adults and juveniles commencing conditional liberty programs according to Indigenous status and sex, during 2002-03

	Indigenous		Non-Indigenous		Unknown		All		Total	
	Female	Male	Female	Male	Female	Male	Female	Male	2002-03	2001-02
Distinct adults	74	541	20	162	1	1	95	704	799	1096
Distinct juveniles	11	99	2	27	0	0	13	126	139	90
Distinct persons 2002-03	85	637	22	188	1	1	108	826	934	
Distinct persons 2001-02	99	805	44	229	5	4	148	1038		1186

Table 26: Conditional liberty order commencements according to office, program and age status, during 2002-03.

Office	Program							Total	
	Home Detention	Probation		Parole	Community Work Order		Diversion	2002-03	2001-02
	Adult	Adult	Juvenile	Adult	Adult	Juvenile	Juvenile		
Alice Springs	24	67	15	27	86	19	0	238	381
Casuarina	62	113	25	25	65	26	0	316	359
Groote Eylandt	20	25	4	13	37	5	0	104	63
Jabiru	1	0	0	0	17	0	0	18	22
Katherine	5	88	14	11	107	13	0	238	282
Nhulunbuy	6	11	0	7	8	0	0	32	27
Palmerston	2	45	14	14	11	2	0	88	101
Tennant Creek	6	20	14	1	25	9	0	75	97
Wadeye	0	15	11	4	30	11	0	71	44
Total 2002-03	126	384	97	102	386	85	0	1180	
Total 2001-02	61	283	68	102	811	50	1		1376

Table 27: Juvenile and adult community work order commencements by most serious offence * and age of commencement, during 2002-03

Offence	Status and Age Group (years)										Total	
	Juvenile				Adult						2002-03	2001-02
	10-12	13-14	15-16	17	18-19	20-24	25-29	30-34	35-39	40+		
Against the person	0	0	0	0	0	1	0	0	0	1	2	3
Assault	0	2	5	1	6	15	12	9	10	2	62	69
Break and enter	0	3	18	7	15	16	10	5	1	0	75	54
Damage property	0	2	5	3	12	24	12	8	9	1	76	78
Drive disqualified/other	0	0	3	4	2	7	4	7	5	7	39	206
Driving under the influence of alcohol	0	0	2	2	1	9	10	4	4	7	39	164
Drugs	0	0	0	1	1	3	4	2	0	2	13	15
Fraud and misappropriation	0	0	0	0	0	0	0	3	0	0	3	9
Justice procedures/other offences	0	0	5	2	9	20	17	9	6	9	77	184
Robbery	0	0	1	0	0	0	0	0	0	0	1	1
Stealing/receiving/other theft	0	1	6	7	15	9	8	4	1	5	56	55
Unlawful use motor vehicle	0	0	3	2	4	7	7	2	2	1	28	23
Total 2002-03	0	8	48	29	65	111	84	53	38	35	471	
Total 2001-02	0	3	29	18	75	205	178	148	94	111		861

* Most serious offence as recorded in IJIS.

Table 28: Home detention order commencements by most serious offence * and age of commencement, during 2002-03.

Offence	Age Group (years)						Total	
	18-19	20-24	25-29	30-34	35-39	40+	2002-03	2001-02
Manslaughter	0	0	0	0	0	0	0	0
Against the person	0	1	0	1	0	0	2	1
Assault	0	5	6	1	1	2	15	10
Sexual assault / offence	0	0	0	0	0	0	0	0
Robbery	0	0	0	0	0	0	0	1
Break and enter	1	3	4	1	2	1	12	2
Unlawful use motor vehicle	0	0	2	0	0	0	2	2
Stealing/receiving/other theft	1	4	1	0	0	0	6	2
Fraud and misappropriation	0	0	0	1	1	3	5	4
Damage property	1	0	0	1	0	0	2	2
Drugs	0	1	3	6	1	2	13	4
Driving under the influence of alcohol	0	2	1	7	5	9	24	15
Drive disqualified/other driving	1	8	8	12	4	10	43	17
Justice procedures/other offences	0	0	0	2	0	0	2	1
Total 2002-03	4	24	25	32	14	27	126	
Total 2001-02	3	9	12	14	9	14		61

* Most serious offence as recorded in IJIS.

Table 29: Releases to parole by most serious offence * and age at commencement, during 2002-03

Offence	Age Group (years)						Total	
	18-19	20-24	25-29	30-34	35-39	40+	2002-03	2001-02
Manslaughter	0	1	0	0	2	2	5	6
Against the person	0	0	0	0	0	1	1	6
Assault	0	6	15	7	8	3	39	31
Sexual assault / offence	0	1	1	3	0	1	6	6
Robbery	0	0	1	0	0	1	2	7
Break and enter	2	3	2	1	2	2	12	9
Unlawful use motor vehicle	0	0	2	1	2	0	5	3
Stealing/receiving/other theft	0	4	0	0	0	0	4	8
Fraud and misappropriation	0	0	0	0	0	0	0	1
Damage property	0	2	1	1	0	0	4	5
Drugs	0	1	0	1	1	3	6	7
Driving under the influence of alcohol	0	2	0	1	1	0	4	4
Drive disqualified/other driving	0	0	1	2	1	1	5	2
Justice procedures/other offences	0	1	3	1	1	2	8	7
Unclassified	0	1	0	0	0	0	1	0
Total 2002-03	2	22	26	18	18	16	102	
Total 2001-02	2	19	22	22	13	24		102

* Most serious offence as recorded in IJIS.

Table 30: Juvenile and adult probation order commencements by most serious offence* and age at commencement, during 2002-03

Offence	Status and Age Group (years)										Total	
	Juvenile				Adult							
	10-12	13-14	15-16	17	18-19	20-24	25-29	30-34	35-39	40+	2002-03	2001-02
Manslaughter	0	0	0	0	0	0	0	0	2	0	2	0
Against the person	0	0	1	0	1	1	1	0	1	1	6	6
Assault	1	1	9	6	8	25	36	20	22	23	151	100
Sexual assault / offence	0	0	2	0	0	3	0	0	0	4	9	3
Robbery	0	0	1	4	1	2	2	0	0	0	10	9
Break and enter	1	7	20	14	18	15	9	1	2	1	88	71
Unlawful use motor vehicle	0	1	2	4	2	6	4	2	0	0	21	19
Stealing/receiving/other theft	0	1	3	2	7	7	2	4	2	3	31	20
Fraud and misappropriation	0	0	0	0	0	1	0	3	1	0	5	3
Damage property	0	4	2	4	7	5	7	1	1	3	34	31
Drugs	0	0	1	0	0	2	5	3	3	6	20	18
Driving under the influence of alcohol	0	0	0	0	2	1	6	7	10	6	32	25
Drive disqualified/other driving	0	0	0	2	1	7	4	10	7	4	35	23
Justice procedures/other offences	0	1	1	2	3	5	7	7	8	3	37	23
Total 2002-03	2	15	42	38	50	80	83	58	59	54	481	
Total 2001-02	1	11	34	22	41	68	50	44	37	43		351

* Most serious offence as recorded in IJIS.

Table 31: Diversionary order commencements according to most serious offence * and age at commencement, during 2002-03.

Offence	Age Group (years)			Total	
	15-16	17	18-19	2002-03	2001-02
Break and enter	0	0	0	0	0
Damage property	0	0	0	0	1
Robbery	0	0	0	0	0
Stealing/receiving/other theft	0	0	0	0	0
Unlawful use motor vehicle	0	0	0	0	0
Total 2002-03	0	0	0	0	
Total 2001-02	0	0	1		1

* - Most serious offence as recorded in IJIS.

Table 32: Pre-sentence reports processed during 2002-03.

Office Location	2002-03
Alice Springs	43
Casuarina	78
Groote Eylandt	21
Jabiru	0
Katherine	75
Nhulunbuy	3
Palmerston	74
Wadeye	5
Tennant Creek	17
Total 2003-03	316

Note: The count for Palmerston includes some reports processed at Wadeye and all reports processed at Jabiru.

Courts Administration

INTRODUCTION

The following data is a more detailed presentation of the Courts Services Performance Reporting data published in the Department of Justice Annual Report 2002-3. In that report, the administrators of Courts Services point out that the performance measures used for Output Budgeting, such as efficiency and effectiveness indicators (i.e. cases lodged and finalisation of cases) pertain to judicial support services only.

When viewing Courts Services data, the reader should be mindful of the purpose for which the data is compiled. The following data is Output Budgeting data (Performance Reporting data) and reflects the workload and outputs of Courts Services. The data includes some aspects of the workload of Courts Services, such as retrials, reviews, breaches, appeals and bail applications, that are not necessarily used in all other collections of courts data.

Other collections may have different purposes including provision of data for research and policy formulation. Therefore care should be taken when comparing data across publications as many factors including counting rules, categorisation of offences and exclusions to the collection may vary. Similarly, the data is not easily comparable across jurisdictions as many factors such as method of finalisation, complexity of cases and issues pertaining to remoteness may vary.

Efforts are currently underway across States and Territories and between collections to bring uniformity to Courts data collections and reporting.

	Jul-Sep	% total Higher Courts	Oct - Dec	% total Higher Courts	Jan-Mar	% total Higher Courts	Apr-Jun	% total Higher Courts	Total
Higher Courts									
Criminal	68	30.8	93	36.9	92	36.2	97	51.1	350
Civil	153	69.2	159	63.1	162	63.8	190	100.0	664
Higher Courts total	221	100.0	252	100.0	254	100.0	190	151.1	1014
Lower Courts									
Criminal	3,057	66.7	3,337	63.7	3,136	63.8	2,971	60.5	12501
Civil	1,269	27.7	1,611	30.7	1,576	32.1	1,690	34.4	6146
Coroners	98	2.1	92	1.8	67	1.4	60	1.2	317
Lands & Mining	4	0.1	2	0.0	2	0.0	3	0.1	11
Mental Health	152	3.3	199	3.8	136	2.8	186	3.8	673
Lower Courts total	4580	100.0	5241	100.0	4917	100	4910	100.0	19648
Total	4801		5493		5171		5100		20662

Lodgments are counted per defendant, that is, defined as having one or more charges
Lodgments are counted per case defined as the group of issues, grievances or complaints.

FINALISATIONS	Jul-Sep	% total Lower Courts	Oct - Dec	% total Lower Courts	Jan-Mar	%total Lower Courts	Apr-Jun	% total Lower Courts	Total
Higher Courts									
<i>Criminal</i>									
<= 3 months	0	0.0	12	14.3	2	3.1	9	11.4	23
>3 and <= 6 months	10	18.9	12	14.3	12	18.8	13	16.5	47
>6 and <=12 months	14	26.4	16	19.0	16	25.0	26	32.9	72
>12 and <=18 months	11	20.8	10	11.9	11	17.2	12	15.2	44
>18 and <=24 months	3	5.7	8	9.5	7	10.9	10	12.7	28
>24 months	15	28.3	26	31.0	16	25.0	9	11.4	66
Criminal total	53	100.0	84	100.0	64	100.0	79	100.0	280
<i>Civil</i>									
<= 3 months	75	51.4	66	49.6	81	49.1	81	50.6	303
>3 and <= 6 months	21	14.4	19	14.3	28	17.0	26	16.3	94
>6 and <=12 months	15	10.3	14	10.5	24	14.5	14	8.8	67
>12 and <=18 months	11	7.5	12	9.0	11	6.7	11	6.9	45
>18 and <=24 months	2	1.4	4	3.0	5	3.0	7	4.4	18
>24 months	22	15.1	18	13.5	16	9.7	21	13.1	77
Civil total	146	100.0	133	100.0	165	100.0	160	100.0	604
Higher Courts Total	199		217		229		239		884
Lower Courts									
<i>Criminal</i>									
<= 3 months	1,828	56.9	2,036	59.5	1,954	60.3	2237	60.3	8055
>3 and <= 6 months	507	15.8	408	11.9	485	15.0	560	15.1	1960
>6 and <=12 months	380	11.8	394	11.5	344	10.6	408	11.0	1526
>12 and <=18 months	156	4.9	178	5.2	156	4.8	195	5.3	685
>18 and <=24 months	93	2.9	129	3.8	73	2.3	85	2.3	380
>24 months	249	7.7	277	8.1	231	7.1	222	6.0	979
Criminal total	3213	100.0	3422	100.0	3243	100.0	3707	100.0	13585
<i>Civil</i>									
<= 3 months	644	65.2	652	64.7	757	67.1	657	68.7	2710
>3 and <= 6 months	110	11.1	85	8.4	114	10.1	85	8.9	394
>6 and <=12 months	107	10.8	112	11.1	98	8.7	88	9.2	405
>12 and <=18 months	51	5.2	46	4.6	57	5.1	44	4.6	198
>18 and <=24 months	25	2.5	20	2.0	28	2.5	28	2.9	101
>24 months	51	5.2	92	9.1	74	6.6	55	5.7	272
Civil total	988	100.0	1007	100.0	1128	100.0	957	100.0	4080
<i>Tribunals</i>									
<= 3 months	155	98.1	202	100.0	136	96.5	188	100.0	681
>3 and <= 6 months	0	0.0	0	0.0	0	0.0	0	0.0	0
>6 and <=12 months	0	0.0	0	0.0	1	0.7	0	0.0	1
>12 and <=18 months	3	1.9	0	0.0	1	0.7	0	0.0	4
>18 and <=24 months	0	0.0	0	0.0	1	0.7	0	0.0	1
>24 months	0	0.0	0	0.0	2	1.4	0	0.0	2
Tribunals total	158	100.0	202	100.0	141	100.0	188	100.0	689
<i>Coroners</i>									
<= 3 months	24	33.8	19	26.8	19	27.5	9	16.7	71
>3 and <= 6 months	17	23.9	31	43.7	21	30.4	19	35.2	88
>6 and <=12 months	20	28.2	18	25.4	17	24.6	21	38.9	76
>12 and <=18 months	3	4.2	2	2.8	5	7.2	3	5.6	13
>18 and <=24 months	4	5.6	0	0.0	3	4.3	0	0.0	7
>24 months	3	4.2	1	1.4	4	5.8	2	3.7	10
Coroners total	71	100.0	71	100.0	69	100.0	54	100.0	265
Lower Courts Total	4430		4702		4581		4906		18619
TOTAL ALL JURISDICTIONS	4629		4919		4810		5145		19503

CORONERS

	Jul-Sep	Oct - Dec	Jan-Mar	Apr-Jun	Total
Lodgments	98	92	67	60	317
Total Cost of Case	Jul-Sep	Oct - Dec	Jan-Mar	Apr-Jun	Total
TIMELINESS	Jul-Sep	Oct - Dec	Jan-Mar	Apr-Jun	Total
Finalisations <= 3 months					
	24	19	19	9	71
>3 and <= 6 months	17	31	21	19	88
>6 and <=12 months	20	18	17	21	76
>12 and <=18 months	3	2	5	3	13
>18 and <=24 months	4	0	3	0	7
>24 months	3	1	4	2	10
TOTAL	71	71	69	54	265

JUL - SEP	Adult	Juvenile	Unknown		total
# Deaths reported	94	6	0	100	
# matters listed for inquest	3	0	0	3	
# finalised matters (Dispensed with IDU)	64	4	0	68	
# finalised matters (by Inquest)	3	0	0	3	71 finalised
OCT - DEC					
# Deaths reported	84	8	0	92	
# matters listed for inquest	3	0	0	3	
# finalised matters (Dispensed with IDU)	67	5	1	73	
# finalised matters (by Inquest)	0	0	0	0	73 finalised
JAN - MAR					
# Deaths reported	54	12	1	67	
# matters listed for inquest	2	0	0	2	
# finalised matters (Dispensed with IDU)	61	5	0	66	
# finalised matters (by Inquest)	3	0	0	3	69 finalised
APR - JUN					
# Deaths reported	55	6	1	62	
# matters listed for inquest	3	0	1	4	
# finalised matters (Dispensed with IDU)	45	4	1	50	
# finalised matters (by Inquest)	1	0	1	2	52 finalised
TOTALS (QTRS)	adult	juvenile	unknown		total
# Deaths reported	287	32	2		321
# matters listed for inquest	11	0	1		12
# finalised matters (Dispensed with IDU)	237	18	2		257
# finalised matters (by Inquest)	7	0	1		8
EOY REPORT					
# Deaths reported	284	31	2		317
# matters listed for inquest	11	0	1		12
# finalised matters (Dispensed with IDU)	237	18	2		257
# finalised matters (by Inquest)	7	0	1		8

MENTAL HEALTH

	Jul-Sep	Oct - Dec	Jan-Mar	Apr-Jun	Total
Lodgments	152	199	136	186	673
TIMELINESS	Jul-Sep	Oct - Dec	Jan-Mar	Apr-Jun	Total
Finalisations					
*					
<= 3 months	152	199	136	186	673
>3 and <= 6 months	0	0	0	0	0
>6 and <=12 months	0	0	0	0	0
>12 and <=18 months	0	0	0	0	0
>18 and <=24 months	0	0	0	0	0
>24 months	0	0	0	0	0
TOTAL	152	199	136	186	673

* All matters are finalised within 7 days as per legislation

LANDS AND MINING TRIBUNAL

Lodgments	4	2	2	3	11
TIMELINESS	Jul-Sep	Oct - Dec	Jan-Mar	Apr-Jun	Total
Finalisations <= 3 months					
	3	3	0	2	8
>3 and <= 6 months	0	0	0	0	0
>6 and <=12 months	0	0	1	0	1
>12 and <=18 months	3	0	1	0	4
>18 and <=24 months	0	0	1	0	1
>24 months	0	0	2	0	2
TOTAL	6	3	5	2	16

LOWER COURTS CIVIL

Lodgments	July - September			October - December			January - March			April - June			Total
	Alice	Katherine	Darwin	Alice	Katherine	Darwin	Alice	Katherine	Darwin	Alice	Katherine	Darwin	
Appeals			5	5		2			2	6		1	21
Personal Injury/criminal injury	40	4	83	46	4	104	34	0	70	26	1	82	494
Debt Recovery	76	37	488	125	21	629	96	21	767	86	24	614	2,984
App for Intervention/Domestic Violence Order	84	34	217	130	52	289	129	42	239	74	99	221	1,610
Australian Registered Judgments	2	1	45	4	4	52	6	2	52	3	1	51	223
Residential Tenancy	4		25	2	1	23	1	1	11	3		8	79
Work Health			44	6		33	5		40	8		31	167
Other	17	22	41	21	9	49	13	4	41	25	6	320	568
TOTAL	223	98	948	339	91	1,181	284	70	1,222	231	131	1,328	6,146

* Civil lodgments & Finalisations include DV applications

TIMELINESS	Jul-Sep	Oct - Dec	Jan-Mar	Apr-Jun	Total
Finalisations <= 3 months					
	644	652	757	657	2,710
>3 and <= 6 months	110	85	114	85	394
>6 and <=12 months	107	112	98	88	405
>12 and <=18 months	51	46	57	44	198
>18 and <=24 months	25	20	28	28	101
>24 months	51	92	74	55	272
TOTAL	988	1,007	1,128	957	4,080

LOWER COURTS CRIMINAL

LODGMENTS	July - September			October - December			January - March			April - June			Total
	Alice	Katherine	Darwin	Alice	Katherine	Darwin	Alice	Katherine	Darwin	Alice	Katherine	Darwin	
Offences against person	174	53	243	234	71	254	181	100	249	160	73	231	2,023
Offences against property	108	68	297	131	89	278	129	105	363	138	38	333	2,077
Drug matters	23	5	40	15	4	52	12	4	48	15	12	72	302
Domestic Violence Breaches	17	6	18	14	8	27	18	12	26	16	12	31	205
Minor Traffic	480	175	907	479	208	801	386	134	779	460	171	714	5,694
Other	96	57	290	152	86	434	87	73	430	93	47	355	2,200
TOTAL	898	364	1,795	1,025	466	1,846	813	428	1,895	882	353	1,736	12,501

TIMELINESS	Jul-Sep	Oct - Dec	Jan-Mar	Apr-Jun	Total
Finalisations <= 3 months					
	1,828	2,036	1,954	2,237	8,055
>3 and <= 6 months	507	408	485	560	1,960
>6 and <=12 months	380	394	344	408	1,526
>12 and <=18 months	156	178	156	195	685
>18 and <=24 months	93	129	73	85	380
>24 months	249	277	231	222	979
TOTAL	3,213	3,422	3,243	3,707	13,585

HIGHER COURTS CIVIL

LODGMENTS	July - September		October - December		January - March		April - June		Total
	Alice Springs	Darwin	Alice	Darwin	Alice	Darwin	Alice	Darwin	
Appeals	11	45	26	51	11	51	9	76	280
Personal Injury/crim injury	1	11	0	6	1	8	3	35	65
Winding Up Applications	0	1	0	1	0	3	0	0	5
Corporations Law	0	3	1	0	0	11	0	1	16
Debt Recovery	0	14	0	19	0	11	1	3	48
MACA	0	1	0	1	0		1	0	3
Probate	0	40	0	33	0	51	0	43	167
Other	1	25	1	20	0	15	4	14	80
TOTAL	13	140	28	131	12	150	18	172	664

TIMELINESS	Jul-Sep	Oct - Dec	Jan-Mar	Apr-Jun	Total
<= 3 months	75	66	81	81	303
>3 and <= 6 months	21	19	28	26	94
>6 and <=12 months	15	14	24	14	67
>12 and <=18 months	11	12	11	11	45
>18 and <=24 months	2	4	5	7	18
>24 months	22	18	16	21	77
TOTAL	146	133	165	160	604

HIGHER COURTS CRIMINAL

LODGMENTS	July - September			October - December			January - March			April - June			Total
	Alice	Katherine	Darwin	Alice	Katherine	Darwin	Alice	Katherine	Darwin	Alice	Katherine	Darwin	
Appeals			4	0		6			7			5	22
Offences against person	10		20	24		38	17	1	38	16		43	207
Offences against property	1		14	1		16	1		19	1		16	69
Drug matters	3		14	0		7	1		6	1		14	46
Other	1		1	0		1			2			1	6
TOTAL	15	0	53	25	0	68	19	1	72	18	0	79	350

* Does not include bail application

TIMELINESS	Jul-Sep	Oct - Dec	Jan-Mar	Apr-Jun	Total
<= 3 months		12	2	9	23
>3 and <= 6 months	10	12	12	13	47
>6 and <=12 months	14	16	16	26	72
>12 and <=18 months	11	10	11	12	44
>18 and <=24 months	3	8	7	10	28
>24 months	15	26	16	9	66
TOTAL	53	84	64	79	280

* Does not include bail application

**ANALYSIS OF CRIMINAL STATISTICS
SUPREME COURT - DARWIN**

LOCATION: DARWIN		PERIOD: 1.7.02 – 30.6.03
No.	Description	Files
1	Pending 010702	141
2	New Matters 010702 – 300603	275
3	FINALISATIONS	
	(a) Guilty Pleas for period	229
	(b) Trials for period	28
	(c) Bail Applications	29
	(d) Accused deceased	0
	(e) Nolle Prosequi/No True Bill	13
	(f) Committed but not proceeded with	0
	TOTAL	299
4	Pending at 300603	117

**ANALYSIS OF CRIMINAL STATISTICS
SUPREME COURT - ALICE SPRINGS**

LOCATION: ALICE SPRINGS		PERIOD: 1.7.02 – 30.6.03
No.	Description	Files
1	Pending 010702	42
2	New Matters 010702 – 300603	82
3	FINALISATIONS	
	(a) Guilty Pleas for period	59
	(b) Trials for period	14
	(c) Bail Applications	5
	(d) Accused deceased	0
	(e) Nolle Prosequi/No True Bill	6
	(f) Committed but not proceeded with	0
	TOTAL	84
4	Pending 300603	57

**ANALYSIS OF CRIMINAL STATISTICS
SUPREME COURT NORTHERN TERRITORY**

LOCATION: NORTHERN TERRITORY		PERIOD: 1.7.02 – 30.6.03
No.	Description	Files
1	Pending 010702	184
2	New Matters 010702 – 300603	357
3	FINALISATIONS	
	(a) Guilty Pleas for period	288
	(b) Trials for period	42
	(c) Bail Applications	34
	(d) Accused deceased	0
	(e) Nolle Prosequi/No True Bill	19
	(f) Committed but not proceeded with	0
	TOTAL	384
4	Pending 300603	157

**NUMBER OF PERSONS DEALT WITH AT TIME INTERVALS
BETWEEN THE DATE OF COMMITTAL AND PLEA/TRIAL FOR
MATTERS FINALISED 1.7.02 – 30.6.03**

TIME PERIOD	PLEAS	TRIALS
Under 13 weeks	71	1
13 weeks and under 26 weeks	68	3
26 weeks and under 52 weeks	82	19
52 weeks and under 78 weeks	31	10
78 weeks and under 104 weeks	20	4
104 weeks and over	16	5
TOTAL	288	42

SUPREME COURT CRIMINAL LODGEMENTS: 1.7.02 – 30.06.03

<i>Offences against</i> PERSONS	182
PROPERTY	69
DRUGS	46
MURDERS	25
OTHERS	6
APPEALS	22
SUB TOTAL	350
BAIL APPLICATIONS	34
TOTAL	384

COURT OF CRIMINAL APPEAL: 01.07.02 – 30.06.03

Appeals Filed	20
Notices of Discontinuance	4
TIME BETWEEN FILING AND COMPLETING FOR MATTERS HEARD	
< 3 months	11
3 – 6 months	3
6 - 12 months	4
12 - 18 months	
18 - 24 months	
> 24 months	
TOTAL	18

SUPREME COURT LODGEMENTS, FINALISATIONS, TRIALS & PLEAS

