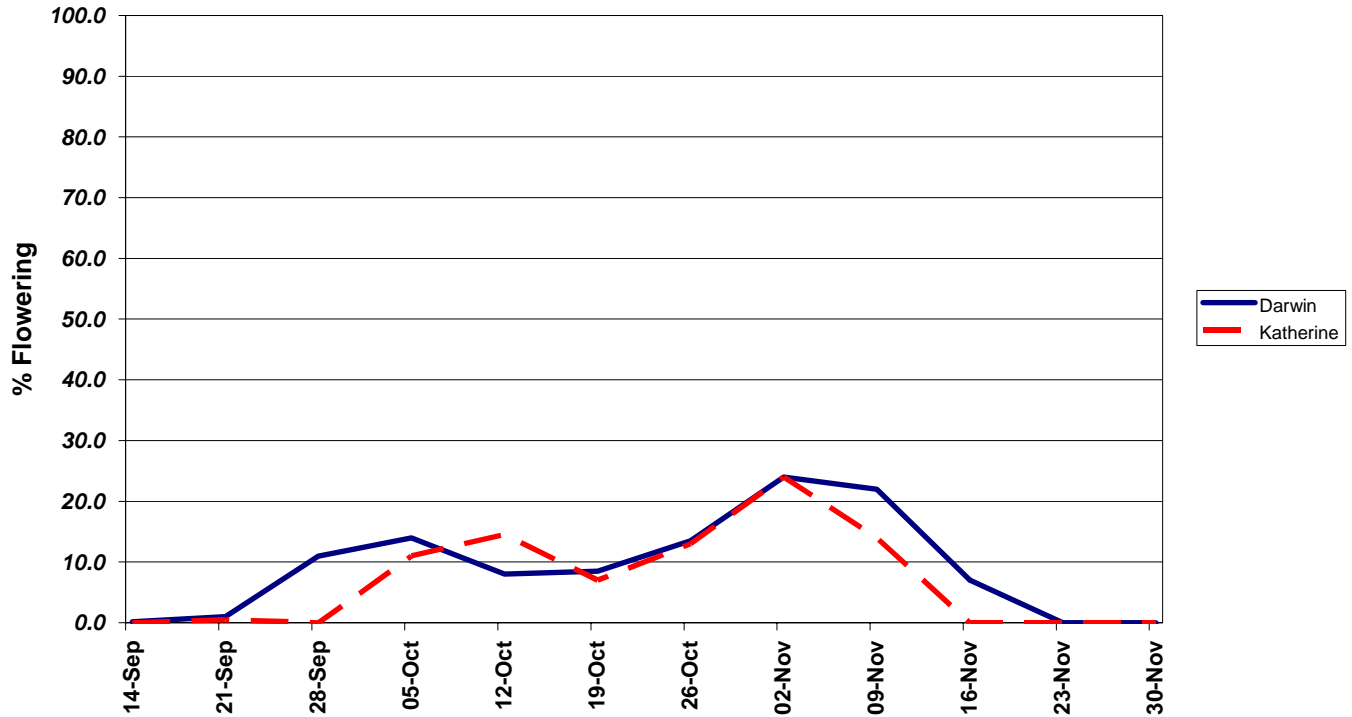




**Combined Forecast: Update 25 August
Second Flowering Survey**

Darwin Region: 100,500 trees, 26 farms
Katherine Region: 50,000 trees, 9 farms



Key Points from the first Mango Crop Forecast 25 August 2005

- Late September start to the season
- Low early volumes from Darwin and Katherine
- First production peak in early to mid-October
- Period of low production in late October
- Second production peak in first week November
- Significant overlap with Darwin and Katherine in the later peaks
- 1-2 weeks earlier than last year
- A major flowering in the Darwin region just completed
- Some fruit set is still happening
- Next update 15 September



Northern Territory Government

Department of Primary Industry, Fisheries and Mines