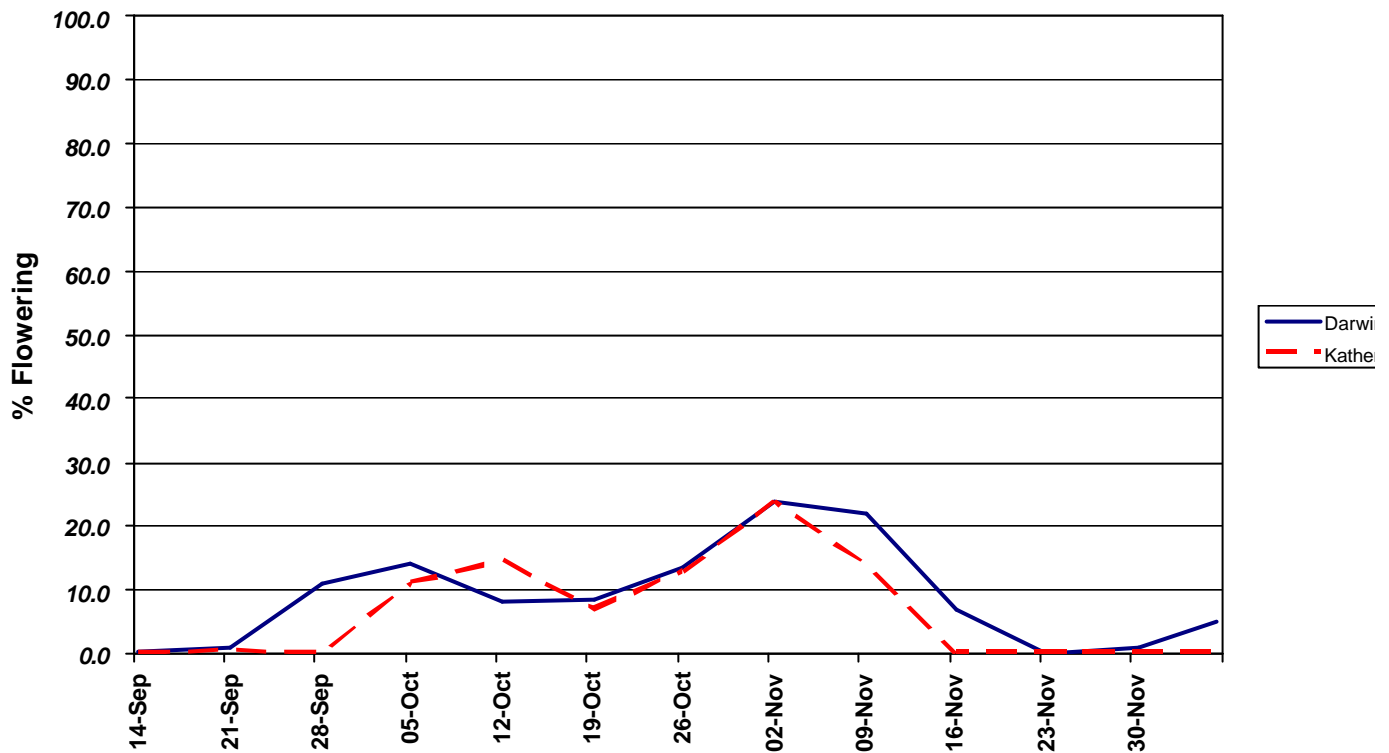




### Combined Forecast: Update 15 September

Darwin Region: 108,000 trees, 28 farms  
Katherine Region: 50,000 trees, 9 farms



### Key Points from the Mango Crop Forecast 15 September 2005

- ✍ Late September start to the season
- ✍ Low early volumes from Darwin and Katherine
- ✍ First production peak in early to mid-October
- ✍ Period of low production in late October
- ✍ Second production peak in first week November
- ✍ Significant overlap with Darwin and Katherine in the later peaks
- ✍ 1-2 weeks earlier than last year
- ✍ A flowering in the Darwin and Katherine region just completed which could result in some December fruit.
- ✍ Some fruit set is still happening