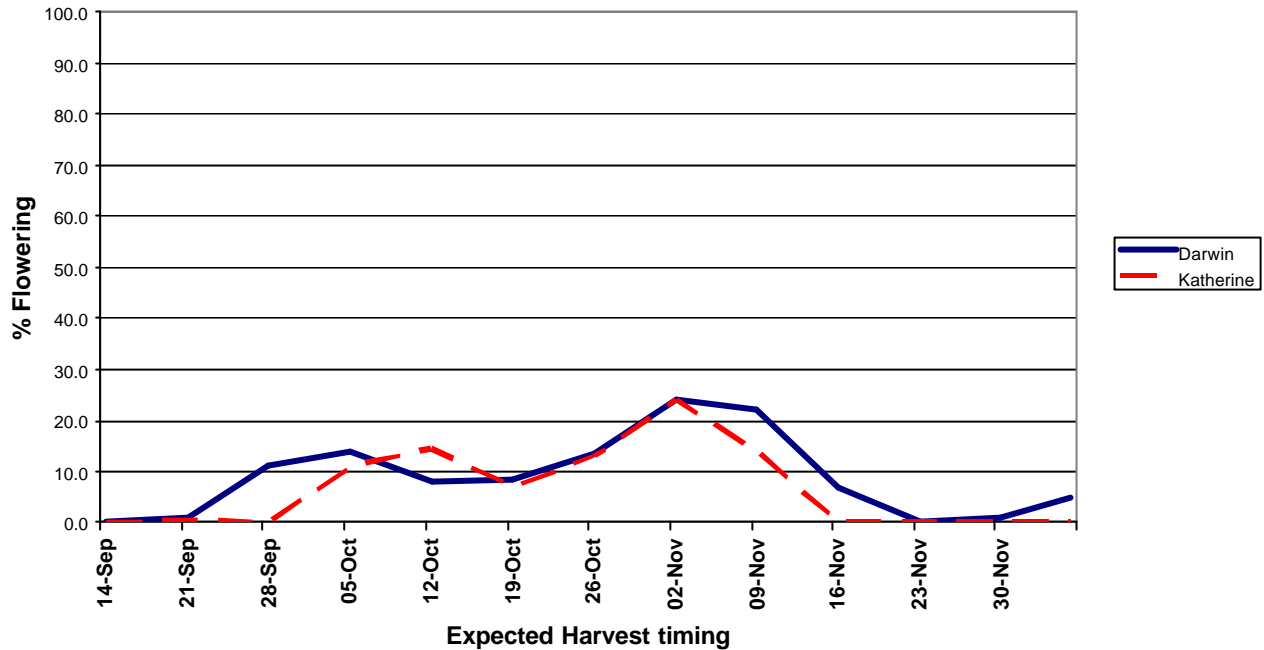




**Combined NT Mango Timing Forecast**  
Heat sums update, 1 October 2005

Darwin Region: 108,000 trees, 28 farms  
Katherine Region: 50,000 trees, 9 farms



**Key Points from the Mango Crop Forecast 1 Oct 2005**

- ✍ Late September start to the season
- ✍ Low early volumes from Darwin and Katherine
- ✍ First production peak in early to mid-October
- ✍ Period of low production in late October
- ✍ Second production peak in first week November
- ✍ Significant overlap with Darwin and Katherine in the later peaks
- ✍ 1-2 weeks earlier than last year
- ✍ Early fruit following predicted pattern
- ✍ Very little change to heat sums this year.