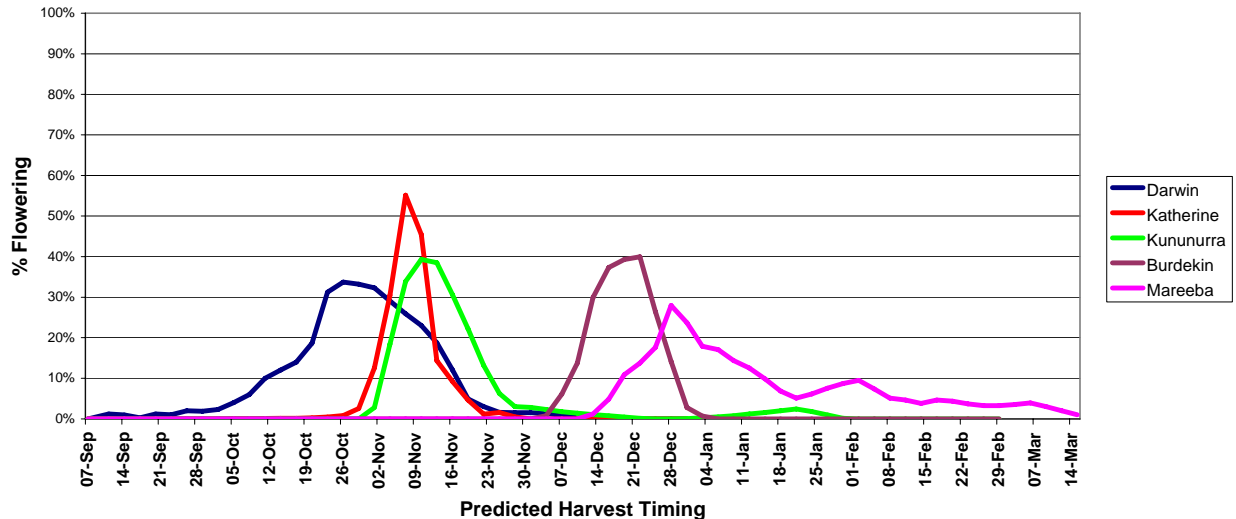


Combined Mango Timing Forecast – 1 November 2007

Greg Owens, A/Principal Extension Officer, DPIFM Darwin

Combined Mango Timing Forecast Update 1 November 2007

Sample size
 Darwin Region: 167,500 trees
 Katherine Region: 114,000 trees
 Kununurra region : 108,600 trees
 Burdekin region: 65,500 trees
 Mareeba: 58,500 trees



Key Points for the National Mango Crop Forecast, 1 November 2007:

- There has been no major change on the timing of the NT, WA or Qld crop as the average heat sums over this last period have remained consistent with normal average temperature accumulation.
- The Darwin region harvest is well under way and is on target with the timing forecast.
- Most Katherine sheds are starting this week.
- The estimate of the Total NT crop between 1.6 - 1.8 million trays remains unchanged.
- NT main harvest season will be approx 5-6 weeks long from approx 12 October to 23 November.
- The Kununurra harvest is on track to start in the first week of November with similar yields per tree, about 50-60% full capacity, as seen in the Darwin and Katherine KP and R2E2 crops.
- This pattern seems to be repeated in the major north Queensland regions. While most areas reported very strong flowering the final yields may not live up to early expectations.
- Mid and later mango varieties are well represented in the Mareeba data.

Next update 15 November 2007

DEPARTMENT OF PRIMARY INDUSTRY, FISHERIES AND MINES

Crops, Forestry and Horticulture Division

GPO Box 3000 Darwin NT 0801

Tel: 08 8999 2357 Fax: 08 8999 2049 Email: horticulture@nt.gov.au Web: www.horticulture.nt.gov.au

Disclaimer:

While all reasonable efforts have been made to ensure that the information contained in this publication is correct, the information covered is subject to change. The Northern Territory Government does not assume and hereby disclaims any express or implied liability whatsoever to any party for any loss or damage caused by errors or omissions, whether these errors or omissions result from negligence, accident or any other cause.