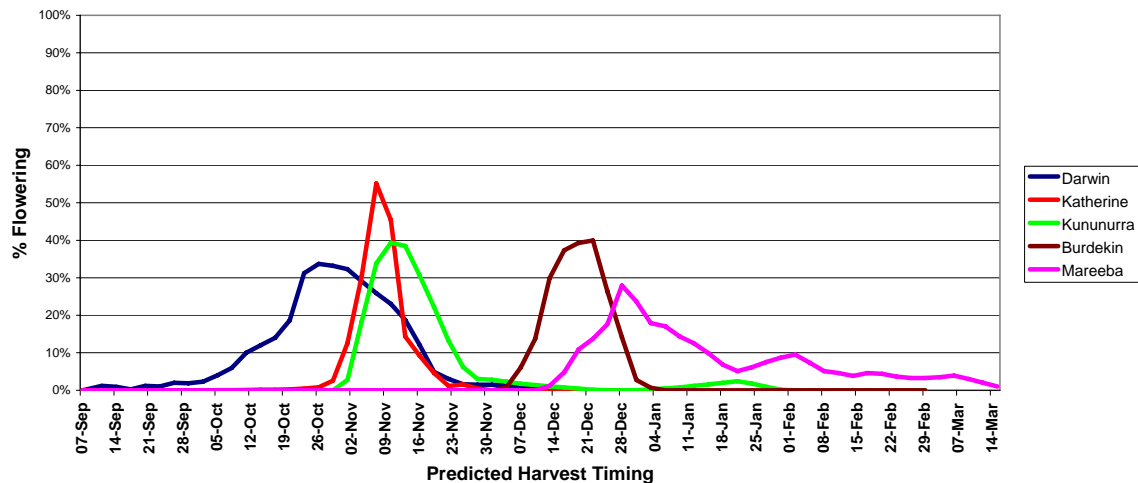


Combined Mango Timing Forecast – 1 October 2007

Greg Owens, A/Principal Extension Officer, DPIFM Darwin

Combined Mango Timing Forecast Update 1 October 2007

Sample size
 Darwin Region: 167,500 trees
 Katherine Region: 114,000 trees
 Kununurra region : 108,600 trees
 Burdekin region: 65,500 trees
 Mareeba: 58,500 trees



Key Points for the National Mango Crop Forecast, 1 October 2007:

- Very small amounts of fruit are being harvested in the Darwin Region but the start of the main harvest is still 12 days away.
- Current estimates of the Total NT crop between 1.6 -1.8 million trays or less than two thirds of 2006 NT crop.
- NT main harvest season will be approx 5- 6 weeks long from approx 12 October to 23 November.
- The intense heat of late September has brought some Darwin fruit forward by 2-3 days, but Katherine fruit will be delayed 2-3 days due to continuing cool mornings in the fruit development period.
- This will spread the NT harvest by about 1 extra week.
- Harvest timing in Kununurra has changed with continuing cool mornings delaying fruit maturity by up to 1 week.
- The Kununurra harvest should start in the first week of November.
- Initial indications from the Burdekin of a late November/December harvest haven't changed significantly.
- Burdekin region reports strong flowering this year.
- Mareeba/ Dimbulah also report a strong flowering on most varieties.
- Mid and later mango varieties are well represented in the Mareeba data.

Next update 15 October 2007

DEPARTMENT OF PRIMARY INDUSTRY, FISHERIES AND MINES

Crops, Forestry and Horticulture Division

GPO Box 3000 Darwin NT 0801

Tel: 08 8999 2357 Fax: 08 8999 2049 Email: horticulture@nt.gov.au Web: www.horticulture.nt.gov.au

Disclaimer:

While all reasonable efforts have been made to ensure that the information contained in this publication is correct, the information covered is subject to change. The Northern Territory Government does not assume and hereby disclaims any express or implied liability whatsoever to any party for any loss or damage caused by errors or omissions, whether these errors or omissions result from negligence, accident or any other cause.