

# Department of Primary Industry, Fisheries and Mines

## Northern Territory Minerals Industry Safety Report

1 April 2006 to 30 June 2006

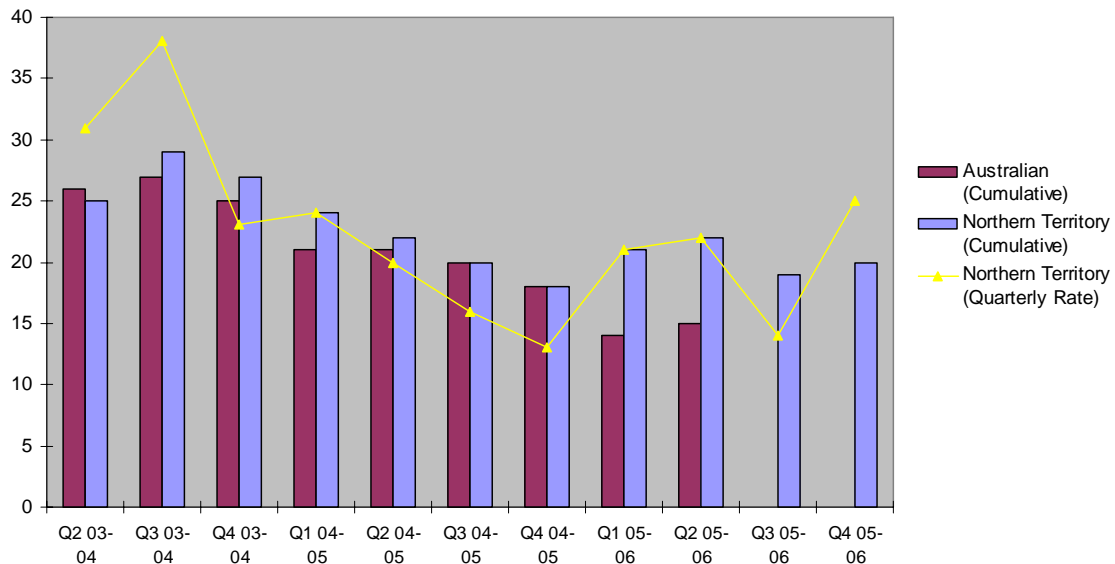
### **Total Recordable Injuries Frequency Rate <sup>1</sup> (TRIFR)**

The All Industry TRIFR for 1 April 2006 to 30 June 2006 is 25.83, compared to 14.74 for the same reporting period in the previous year.

The TRIFR by sector for 1 April 2006 to 30 June 2006 is estimated at:

- Extractive operations, Nil
- Exploration operations, 32
- Mining operations, 26.

**Total Recordable Injury Frequency Rate (TRIFR)**



The Northern Territory cumulative TRIFR arises from adding consecutive quarterly rates in each financial year, and has been included to allow comparison with the national cumulative rate reported by the Minerals Council of Australia.

<sup>1</sup> Total Recordable Injury Frequency Rate includes fatalities, lost time injuries, serious injuries and medical treatment cases and is calculated on number of injuries per million hours worked.

### **First Aid Injuries <sup>2</sup>**

302 First Aid cases were reported from 1 April 2006 to 30 June 2006, compared to 249 for the same reporting period in the previous year.

### **Medical Treatment Injuries <sup>3</sup> (MTI)**

47 Medical Treated Injuries were reported from 1 April 2006 to 30 June 2006, compared to 13 for the same reporting period in the previous year.

### **Serious Injuries <sup>4</sup>**

12 Serious injuries were reported from 1 April 2006 to 30 June 2006, compared to 17 for the same reporting period in the previous year.

### **Lost Time Injuries <sup>5</sup> (LTI)**

14 Lost Time Injuries were reported from 1 April 2006 to 30 June 2006, compared to 8 for the same reporting period in the previous year.

### **Lost Time Injury Frequency Rate (LTIFR)**

The indicative total industry LTIFR for 1 April 2006 to 30 June 2006, is estimated at 5.0, compared to 3.1 for the same period in the previous year.

### **Severe Injuries <sup>6</sup>**

2 Severe injury was reported for 1 April 2006 to 30 June 2006, compared to 4 for the same reporting period in the previous year.

### **Fatal Injuries**

No Fatal injuries were reported for 1 April 2006 to 30 June 2006. No Fatal injuries were reported for the same period in the previous year.

### **Severe Injury Breakdown 1 April 2006 – 30 June 2006**

<b>Breakdown Agency</b>		<b>Body Location</b>		<b>Nature of Injury</b>		<b>Mechanism of Injury</b>	
Mobile Plant	1	Hips and Leg	2	Fractures	2	Fall From Same Level	1
Outdoor Environment	1					Other Muscular Stress	1
<b>Total</b>	<b>2</b>		<b>2</b>		<b>2</b>		<b>2</b>

<sup>2</sup> An injury that requires First Aid treatment.

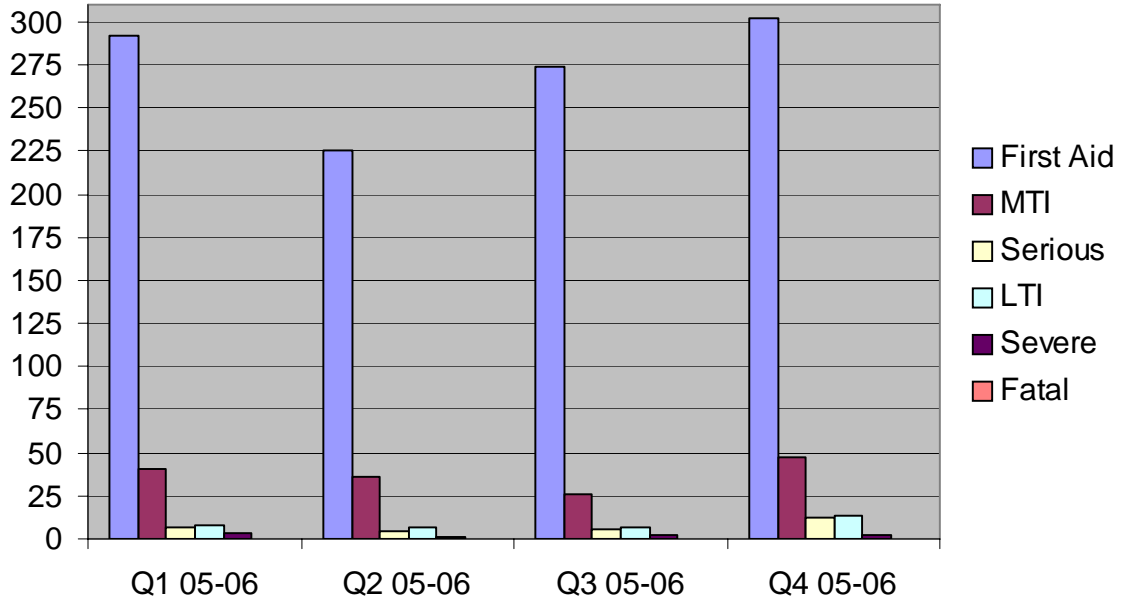
<sup>3</sup> An injury that requires treatment by a Medical Practitioner.

<sup>4</sup> If a person suffers an injury/illness and is unable to carry out their normal work activities for one or full more shifts.

<sup>5</sup> An injury that results in a minimum of one full shift absence.

<sup>6</sup> An injury that results in a minimum of two weeks off work.

### Injury Type by Quarter



### Lost Time Injury Frequency Rate

