

Department of Primary Industry, Fisheries and Mines
Northern Territory Minerals Industry Safety Report
1 January 2006 to 31 March 2006

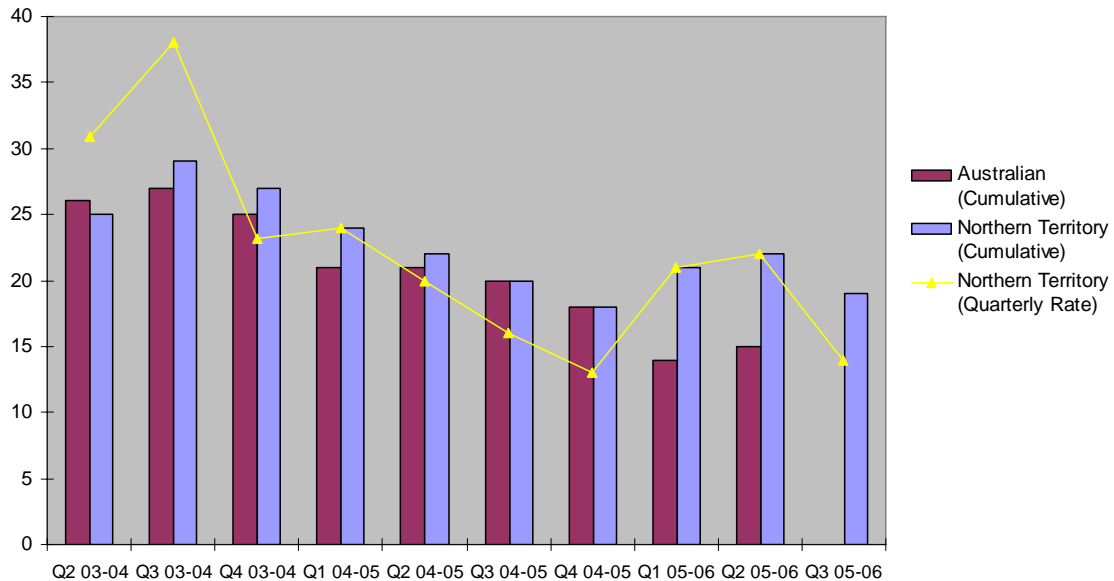
Total Recordable Injuries Frequency Rate ¹ (TRIFR)

The All Industry TRIFR for 1 January 2006 to 31 March 2006 is 13.94, compared to 18.21 for the same reporting period in the previous year.

The TRIFR by sector for 1 January 2006 to 31 March 2006 is estimated at:

- Extractive operations, Nil
- Exploration operations, Nil
- Mining operations, 13.99.

Total Recordable Injury Frequency Rate (TRIFR)



The Northern Territory cumulative TRIFR arises from adding consecutive quarterly rates in each financial year, and has been included to allow comparison with the national cumulative rate reported by the Minerals Council of Australia.

¹ Total Recordable Injury Frequency Rate includes fatalities, lost time injuries, serious injuries and medical treatment cases and is calculated on number of injuries per million hours worked.

First Aid Injuries ²

274 First Aid cases were reported from 1 January 2006 to 31 March 2006, compared to 113 for the same reporting period in the previous year.

Medical Treatment Injuries ³ (MTI)

26 Medical Treated Injuries were reported from 1 January 2006 to 31 March 2006, compared to 18 for the same reporting period in the previous year.

Serious Injuries ⁴

6 Serious injuries were reported from 1 January 2006 to 31 March 2006, compared to 13 for the same reporting period in the previous year.

Lost Time Injuries ⁵ (LTI)

7 Lost Time Injuries were reported from 1 January 2006 to 31 March 2006, compared to 8 for the same reporting period in the previous year.

Lost Time Injury Frequency Rate (LTIFR)

The indicative total industry LTIFR for 1 January 2006 to 31 March 2006, is estimated at 2.5, compared to 3.7 for the same period in the previous year.

Severe Injuries ⁶

2 Severe injury was reported for 1 January 2006 to 31 March 2006, compared to 4 for the same reporting period in the previous year.

Fatal Injuries

No Fatal injuries were reported for 1 January 2006 to 31 March 2006, No Fatal injuries were reported for the same period in the previous year.

Severe Injury Breakdown 1 January 2006 – 31 March 2006

Breakdown Agency		Body Location		Nature of Injury		Mechanism of Injury	
Machinery/Fixed Plant	1	Shoulders and Arms	1	Fractures	2	Fall From Same Level	1
Outdoor Environment	1	Feet and Toes	1			Hit by moving object	1
Total	2		2		2		2

² An injury that requires First Aid treatment.

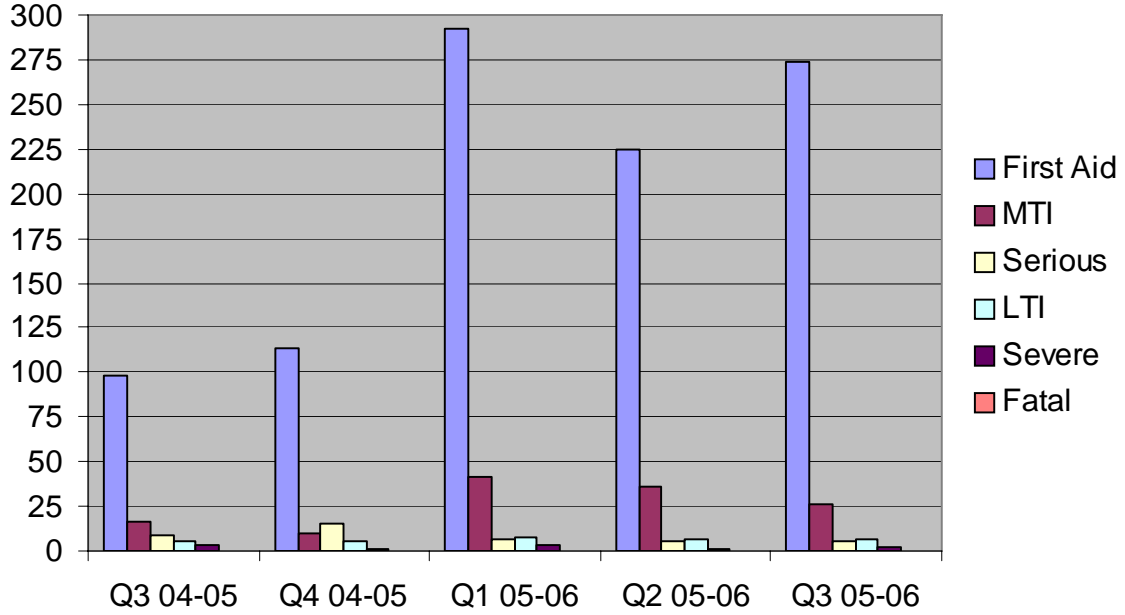
³ An injury that requires treatment by a Medical Practitioner.

⁴ If a person suffers an injury/illness and is unable to carry out their normal work activities for one or full more shifts.

⁵ An injury that results in a minimum of one full shift absence.

⁶ An injury that results in a minimum of two weeks off work.

Injury Type by Quarter



Lost Time Injury Frequency Rate

