

Department of Primary Industry, Fisheries and Mines Northern Territory Minerals Industry Safety Report 1 October 2005 to 31 December 2005

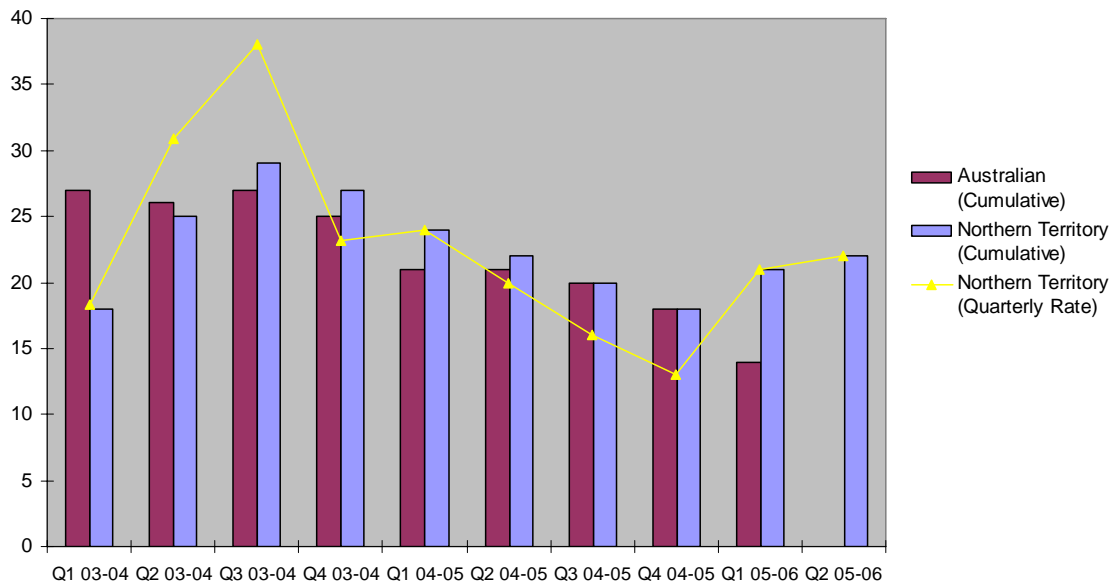
Total Recordable Injuries Frequency Rate ¹ (TRIFR)

The All Industry TRIFR for 1 October 2005 to 31 December 2005 is 22.24, compared to 20.38 for the same reporting period in the previous year.

The TRIFR by sector for 1 October 2005 to 31 December is estimated at:

- Extractive operations, Nil
- Exploration operations, 46
- Mining operations, 22.

Total Recordable Injury Frequency Rate (TRIFR)



The Northern Territory cumulative TRIFR arises from adding consecutive quarterly rates in each financial year, and has been included to allow comparison with the national cumulative rate reported by the Minerals Council of Australia.

¹ Total Recordable Injury Frequency Rate includes fatalities, lost time injuries, serious injuries and medical treatment cases and is calculated on number of injuries per million hours worked.

First Aid Injuries²

225 First Aid cases were reported from 1 October 2005 to 31 December 2005, compared to 113 for the same reporting period in the previous year.

Medical Treatment Injuries³ (MTI)

36 Medical Treated Injuries were reported from 1 October 2005 to 31 December 2005, compared to 19 for the same reporting period in the previous year.

Serious Injuries⁴

5 Serious injuries were reported from 1 October 2005 to 31 December 2005, compared to 10 for the same reporting period in the previous year.

Lost Time Injuries⁵ (LTI)

7 Lost Time Injuries were reported from 1 October 2005 to 31 December 2005, compared to 11 for the same reporting period in the previous year.

Lost Time Injury Frequency Rate (LTIFR)

The indicative total industry LTIFR for 1 October 2005 to 31 December 2005, is estimated at 3.2, compared to 5.6 for the same period in the previous year.

Severe Injuries⁶

1 Severe injury was reported for 1 October 2005 to 31 December 2005, compared to 3 for the same reporting period in the previous year.

Fatal Injuries

No Fatal injuries were reported for 1 October 2005 to 31 December 2005, No Fatal injuries were reported for the same period in the previous year.

Severe Injury Breakdown 1 October 2005 – 31 December 2005

Breakdown Agency		Body Location		Nature of Injury		Mechanism of Injury	
Machinery/Fixed Plant	1	Hand & Fingers	1	Fractures	1	Fall From Same Level	1
Total	1		1		1		1

² An injury that requires First Aid treatment.

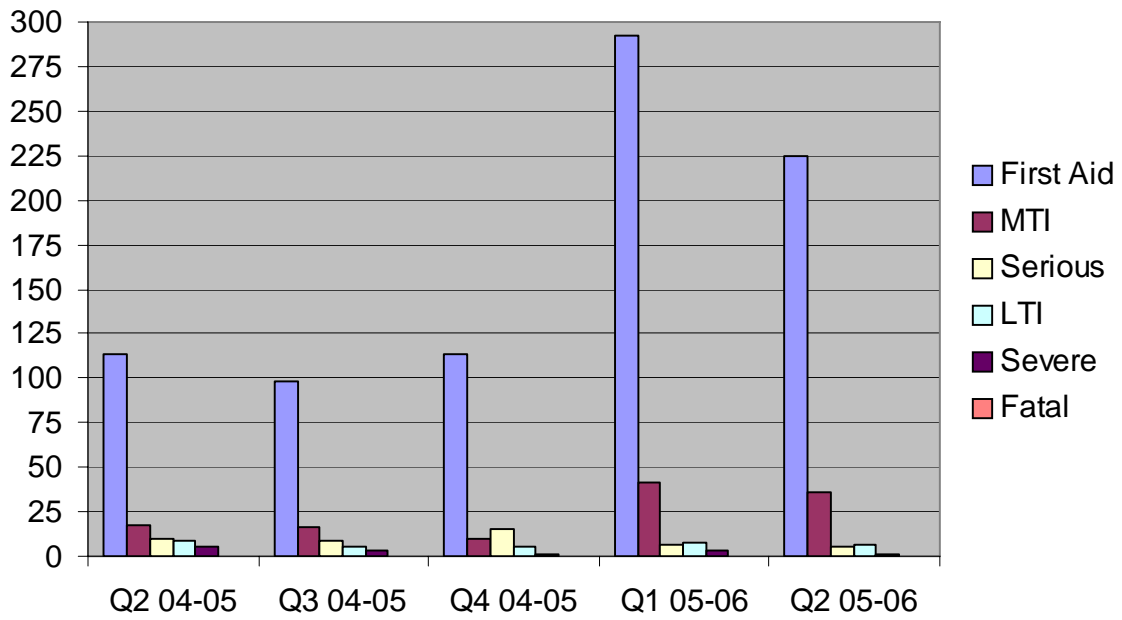
³ An injury that requires treatment by a Medical Practitioner.

⁴ If a person suffers an injury/illness and is unable to carry out their normal work activities for one or full more shifts.

⁵ An injury that results in a minimum of one full shift absence.

⁶ An injury that results in a minimum of two weeks off work.

Injury Type by Quarter



Lost Time Injury Frequency Rate

