

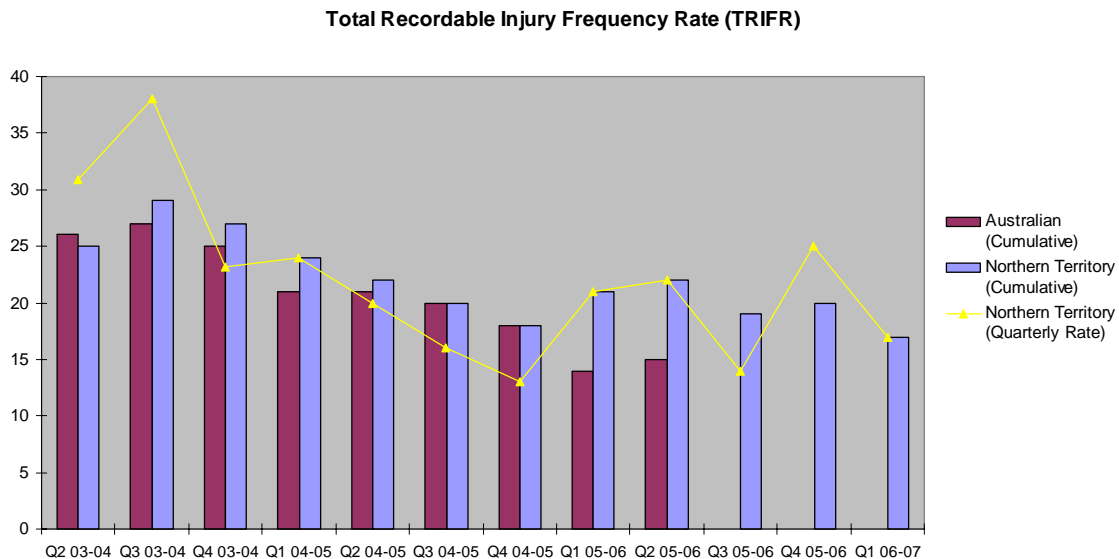
Department of Primary Industry, Fisheries and Mines Northern Territory Minerals Industry Safety Report 1 July 2006 to 30 September 2006

Total Recordable Injuries Frequency Rate ¹ (TRIFR)

The All Industry TRIFR for 1 July 2006 to 30 September 2006 is 17, compared to 21 for the same reporting period in the previous year.

The TRIFR by sector for 1 July 2006 to 30 September 2006 is estimated at:

- Extractive operations, Nil
- Exploration operations, 75
- Mining operations, 16.



The Northern Territory cumulative TRIFR arises from adding consecutive quarterly rates in each financial year, and has been included to allow comparison with the national cumulative rate reported by the Minerals Council of Australia.

¹ Total Recordable Injury Frequency Rate includes fatalities, lost time injuries, serious injuries and medical treatment cases and is calculated on number of injuries per million hours worked.

First Aid Injuries ²

345 First Aid cases were reported from 1 July 2006 to 30 September 2006, compared to 293 for the same reporting period in the previous year.

Medical Treatment Injuries ³ (MTI)

26 Medical Treated Injuries were reported from 1 July 2006 to 30 September 2006, compared to 39 for the same reporting period in the previous year.

Serious Injuries ⁴

11 Serious injuries were reported from 1 July 2006 to 30 September 2006, compared to 10 for the same reporting period in the previous year.

Lost Time Injuries ⁵ (LTI)

15 Lost Time Injuries were reported from 1 July 2006 to 30 September 2006, compared to 8 for the same reporting period in the previous year.

Lost Time Injury Frequency Rate (LTIFR)

The indicative total industry LTIFR for 1 July 2006 to 30 September 2006, is estimated at 4.8, compared to 2.9 for the same period in the previous year.

Severe Injuries ⁶

6 Severe injury was reported for 1 July 2006 to 30 September 2006, compared to 3 for the same reporting period in the previous year.

Fatal Injuries

No Fatal injuries were reported for 1 July 2006 to 30 September 2006. No Fatal injuries were reported for the same period in the previous year.

Severe Injury Breakdown 1 July 2006 – 30 September 2006

Breakdown Agency		Body Location		Nature of Injury		Mechanism of Injury	
Machinery/ Fixed Plant	2	Back	1	Burns	1	Hit by Moving Object	1
Mobile Plant	1	Hips and Leg	2	Open wound	1	Unspecified Mechanisms	1
Unspecified Agencies	1	General Unspecified	1	Joint or Muscle Strain	2	Multiple Mechanisms	1
Other Transport	1	Hands / Fingers	1	Multiple injuries	1	Single Chemical Contact	1
Outdoor Environment	1	Shoulders and Arms	1	Other and Unspecified	1	Vehicle Accident	2
Total	6		6		6		6

² An injury that requires First Aid treatment.

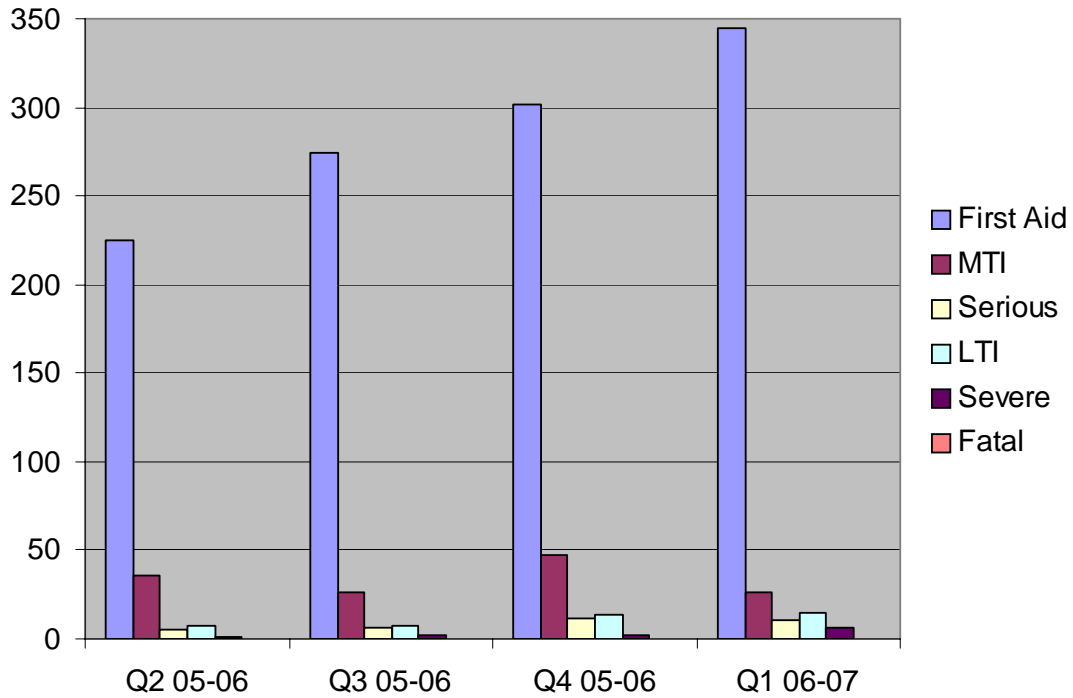
³ An injury that requires treatment by a Medical Practitioner.

⁴ If a person suffers an injury/illness and is unable to carry out their normal work activities for one or full more shifts.

⁵ An injury that results in a minimum of one full shift absence.

⁶ An injury that results in a minimum of two weeks off work.

Injury Type by Quarter



Lost Time Injury Frequency Rate

