

# Department of Business, Industry and Resource Development

## Northern Territory Minerals Industry Safety Report

### 1 July 2005 to 30 September 2005

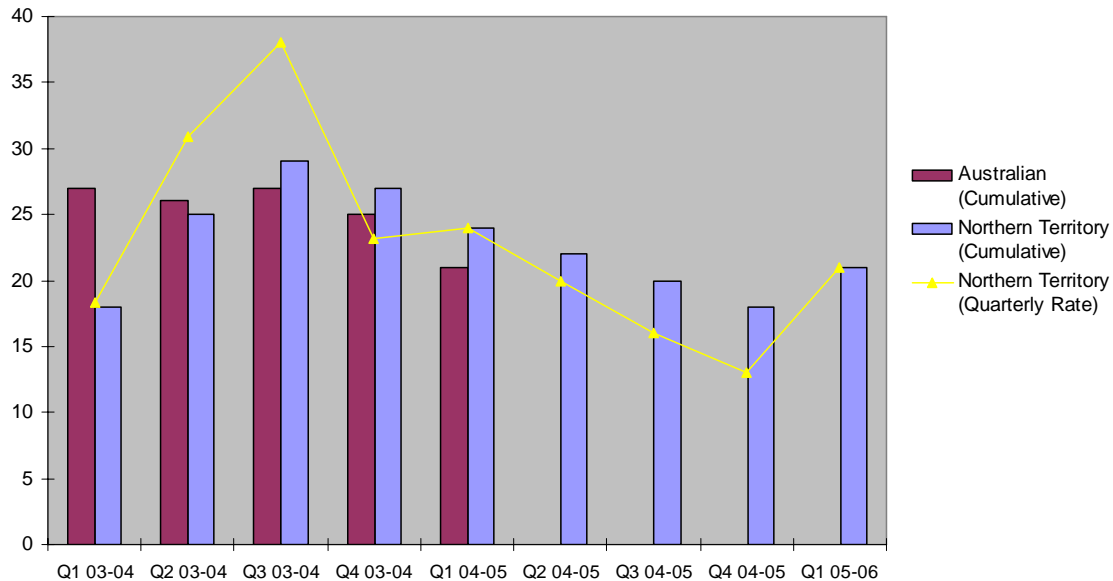
#### **Total Recordable Injuries Frequency Rate <sup>1</sup> (TRIFR)**

The All Industry TRIFR for 1 July 2005 to 30 September 2005 is 21, compared to 23 for the same reporting period in the previous year.

The TRIFR by sector for 1 July 2005 to 30 September is estimated at:

- Extractive operations, Nil
- Exploration operations, 42
- Mining operations, 11.

**Total Recordable Injury Frequency Rate (TRIFR)**



The Northern Territory cumulative TRIFR arises from adding consecutive quarterly rates in each financial year, and has been included to allow comparison with the national cumulative rate reported by the Minerals Council of Australia.

<sup>1</sup> Total Recordable Injury Frequency Rate includes fatalities, lost time injuries, serious injuries and medical treatment cases and is calculated on number of injuries per million hours worked.

### **First Aid Injuries <sup>2</sup>**

292 First Aid cases were reported from 1 July 2005 to 30 September 2005, compared to 91 for the same reporting period in the previous year.

### **Medical Treatment Injuries <sup>3</sup> (MTI)**

41 Medical Treated Injuries were reported from 1 July 2005 to 30 September 2005, compared to 22 for the same reporting period in the previous year.

### **Serious Injuries <sup>4</sup>**

7 Serious injuries were reported from 1 July 2005 to 30 September 2005, compared to 17 for the same reporting period in the previous year.

### **Lost Time Injuries <sup>5</sup> (LTI)**

8 Lost Time Injuries were reported from 1 July 2005 to 30 September 2005, compared to 11 for the same reporting period in the previous year.

### **Lost Time Injury Frequency Rate (LTIFR)**

The indicative total industry LTIFR for 1 July 2005 to 30 September 2005, is estimated at 2.9, compared to 5.6 for the same period in the previous year.

### **Severe Injuries <sup>6</sup>**

3 Severe injuries were reported for 1 July 2005 to 30 September 2005, compared to 3 for the same reporting period in the previous year.

### **Fatal Injuries**

No Fatal injuries were reported for 1 July 2005 to 30 September 2005, 1 Fatal injury was reported for the same period in the previous year.

## **Severe Injury Breakdown 1 July 2005 – 30 September 2005**

<b>Breakdown Agency</b>		<b>Body Location</b>		<b>Nature of Injury</b>		<b>Mechanism of Injury</b>	
Non powered hand tools	1	Hand & Fingers	2	Fractures	1	Hit by moving object	2
Human Agencies	1	Back	1	Joint/Muscle Strain	1	Repetitive Movement	1
Mobile Plant	1			Traumatic Amputation	1		
<b>Total</b>	<b>3</b>		<b>3</b>		<b>3</b>		<b>3</b>

<sup>2</sup> An injury that requires First Aid treatment.

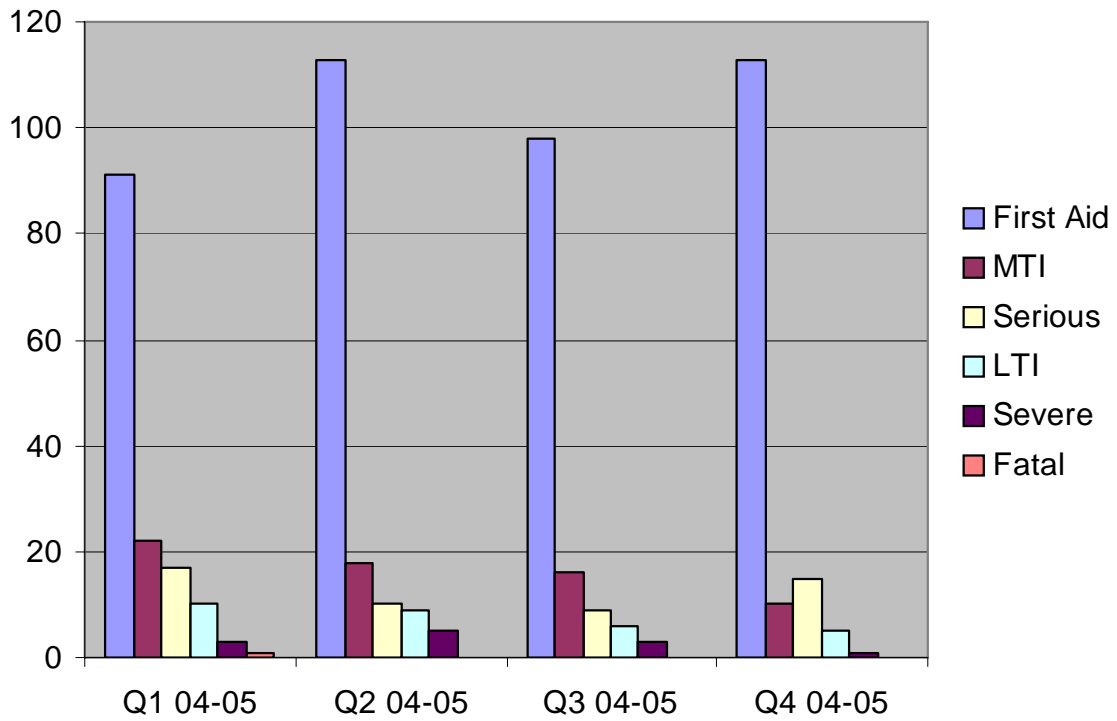
<sup>3</sup> An injury that requires treatment by a Medical Practitioner.

<sup>4</sup> If a person suffers an injury/illness and is unable to carry out their normal work activities for one or full more shifts.

<sup>5</sup> An injury that results in a minimum of one full shift absence.

<sup>6</sup> An injury that results in a minimum of two weeks off work.

### Injury Type by Quarter



### Lost Time Injury Frequency Rate

