

Northern Territory Mining Accident and Injury Summary 2005-06

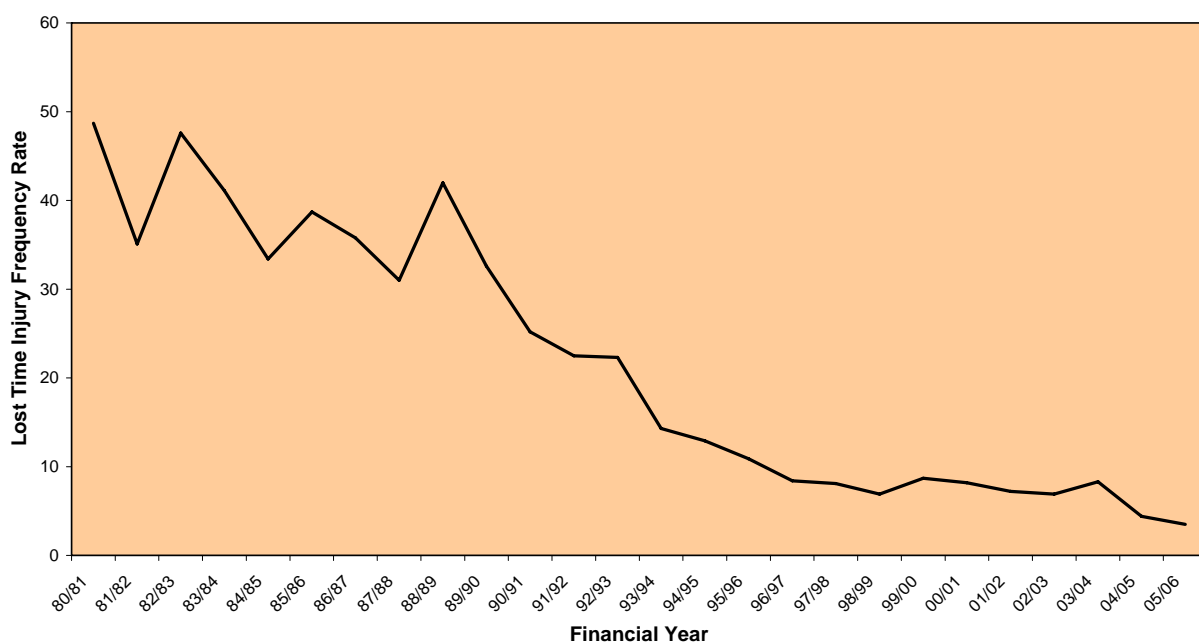
5 Year Summary					
	2001 - 02	2002 - 03	2003 - 04	2004 - 05	2005 - 06
Average Number of Mine Workers	3,553	3,628	3,525	3,742	4,896
Work Hours Exposure	8,013,560	8,273,614	8,211,514	8,848,715	11,085,162
Number of Lost Time Injuries	58	57	68	39	39
Number of Days Lost Due to Injuries	1,508	1,551	1,660	1,002	650
Lost Time Injury Frequency Rate	7.2	6.9	8.3	4.4	3.5
Incidence Rate	1.6	1.6	1.9	1.0	0.8
Duration Rate	26.0	27.2	24.4	25.7	17.9
Severity Rate	187.2	187.8	202.5	113.1	62.7
Number of Fatal Injuries	0	0	0	1	0

Note: Any variations with previously published figures can be attributed to receipt of additional and/or superior data from operators. The 2005-06 data should be viewed with caution as it is preliminary and may not represent the final data set.

2005-06 Statistical Summary

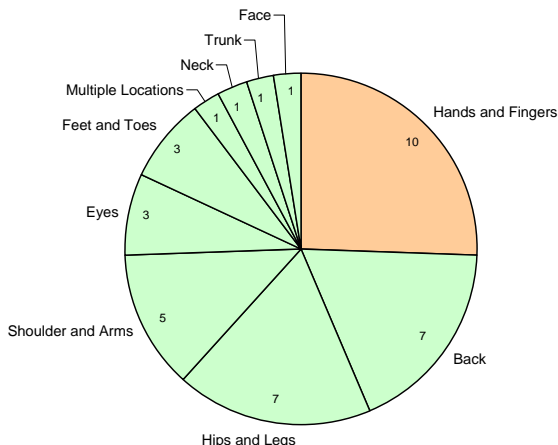
- There were 39 lost time injuries for a workforce of 4,896. Matching the previous year's 39 injuries.
- The overall Lost Time Injury Frequency Rate was 3.5. A 20% decrease on the 2004-05 rate of 4.4.
- The average work days lost per injury were 17.9. A 30% decrease on the 2004-05 rate of 25.7.
- The severity rate decreased to 62.7, down 45% from 113.1 in 2004-05.

Lost Time Injury Frequency Rate



Analysis of Lost Time Injuries

Injuries by Part of Body

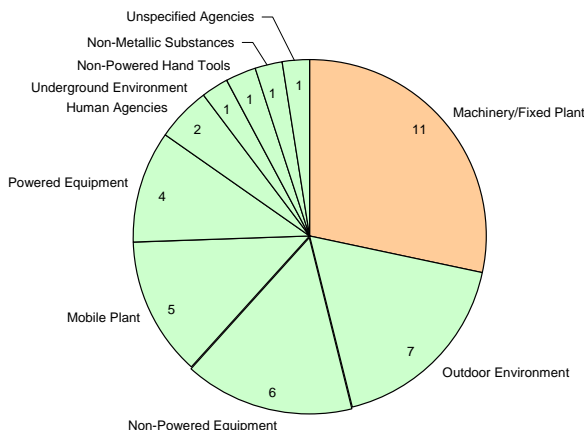


Injury Summary

Injuries by Part of Body

- 10 hand and finger injuries accounted for the largest portion of injuries at 25%.
- Back, hips and legs each recorded 7 injuries. This accounted for the second largest portion of injuries at 17% each.

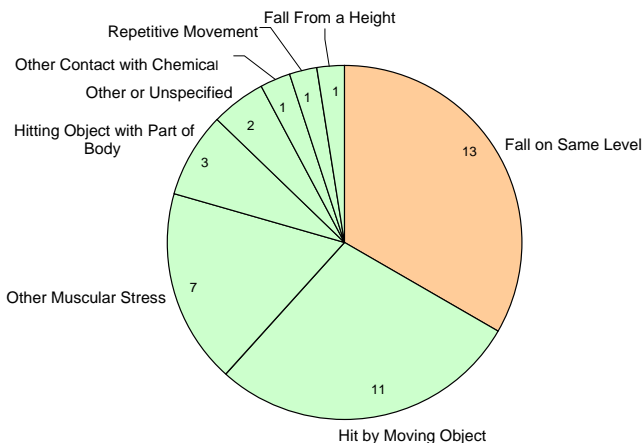
Injuries by Agency



Injuries by Agency

- 11 injuries involving machinery or fixed plant accounted for the largest portion of injuries at 27%.
- 7 injuries in an outdoor environment accounted for the second largest portion of injuries at 15%.

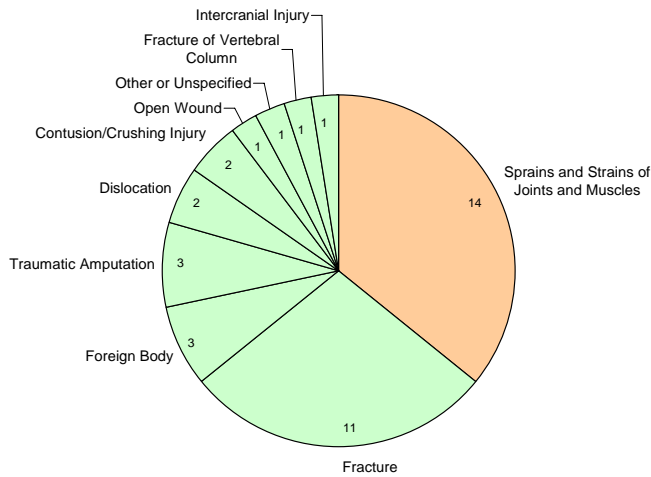
Injuries by Mechanism



Injuries by Mechanism

- 13 injuries involving falls on same level accounted for the majority of injuries at 32%.
- 11 injuries involving being hit by a moving object accounted for the second largest portion of injuries at 28%.

Injuries by Nature

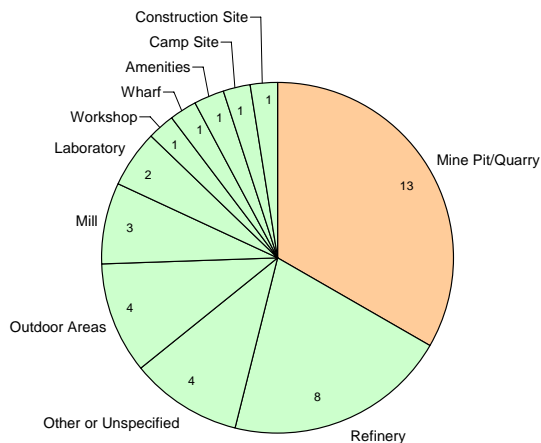


Injury Summary

Injuries by Nature

- 14 joint or muscle strains accounted for the majority of injuries at 35%.
- 11 fractures accounted for the second largest portion of injuries at 27%.

Injuries by Location



Injuries by Location

- 13 injuries at the mine pit/quarry, accounted for 35% of injuries.
- 8 injuries at the refinery, accounted for 20% of injuries.

Summary of Severe Incidents

- A worker sustained a broken left wrist after tripping whilst moving backward.
- A worker sustained a muscle strain to the shoulder whilst attempting to retrieve an unsecured drum from a trolley.
- A worker sustained a dislocated finger when he tripped and fell.
- A shot firer sustained a crushed leg when a hopper, he was using to load explosives into drill holes, slipped through the tynes of a forklift and landed on him.
- A crane operator sustained a fractured leg when disembarking from a crane.
- A contract worker sustained a broken foot and deep skin lacerations when a steel pipe slipped from chains, which were slung from a loader bucket, and landed on his foot.
- A worker sustained an injury to his wrist and shoulder when he tripped on a rock.
- A fitter sustained partial amputation and crushing injuries to his finger, when his hand slipped and was crushed between a metal grille and a stop block, whilst repairing a bogger.

Definitions

Lost Time Injury (LTI)	An injury that results in a minimum of one full shift's absence.
Lost Time Injury Frequency Rate (LTIFR)	The number of lost time injuries per one million hours worked.
Severe Injury	An injury that results in a minimum of two weeks off work.
Duration Rate	The average lost time for every lost time injury.
Number of Hours Worked	The total number of hours worked by employees.
Severity Rate	The average number of days lost per one million hours worked.
Incident Rate	The number of fatalities or injuries per 100 employees.

This data is produced by the Department of Primary Industry, Fisheries and Mines and has been provided by Northern Territory mining operators as required under Mining Management Regulation 3. For information on Regulation 3 reporting Email: mineral.info@nt.gov.au Web: <http://www.nt.gov.au/dpifm> [Minerals & Energy]