

Northern Territory

Mining Accident and Injury Summary

2004-05

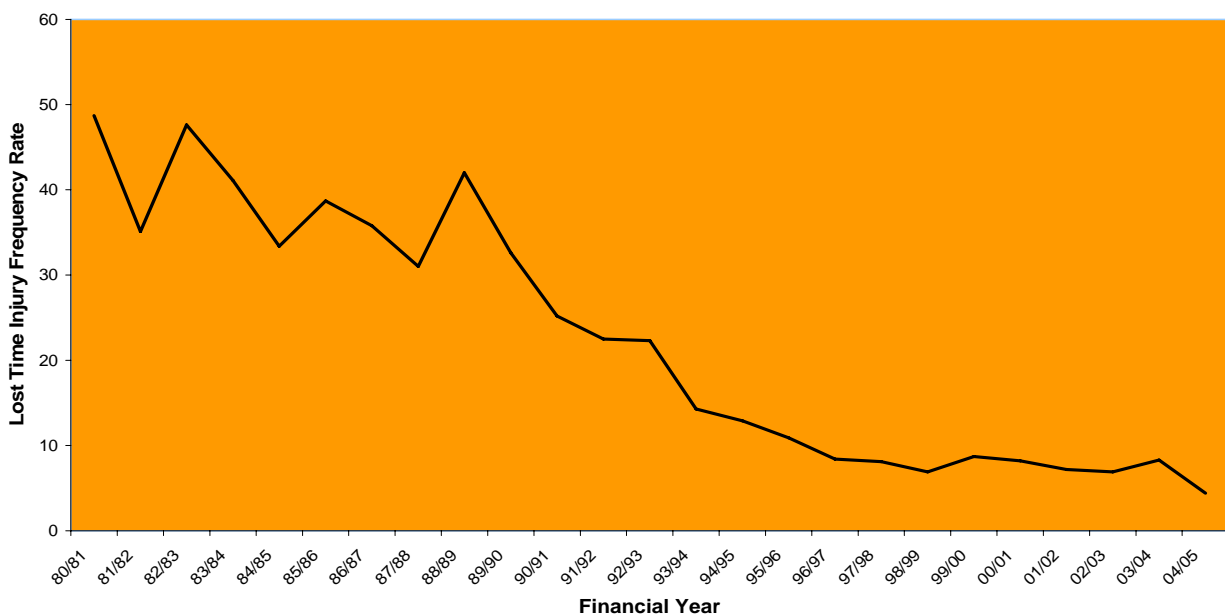
5 Year Summary					
	2000 - 01	2001 - 02	2002 - 03	2003 - 04	2004 - 05
Average Number of Mine Workers	3,535	3,553	3,628	3,525	3,742
Work Hours Exposure	7,891,003	8,013,560	8,273,614	8,211,514	8,842,165
Number of Lost Time Injuries	65	58	57	68	39
Number of Days Lost due to Injuries	1,229	1,508	1,551	1,660	1,002
Lost Time Injury Frequency Rate	8.2	7.2	6.9	8.3	4.4
Incidence Rate	1.8	1.6	1.6	1.9	1.0
Duration Rate	18.9	26.0	27.2	24.4	25.7
Severity Rate	155.0	187.2	187.8	202.5	113.1
Number of Fatal Injuries	0	0	0	0	1

Note: Any variations with previously published figures can be attributed to receipt of additional and/or superior data from operators. The 2004-05 data should be viewed with caution as it is preliminary and may not represent the final data set.

2004-05 Statistical Summary

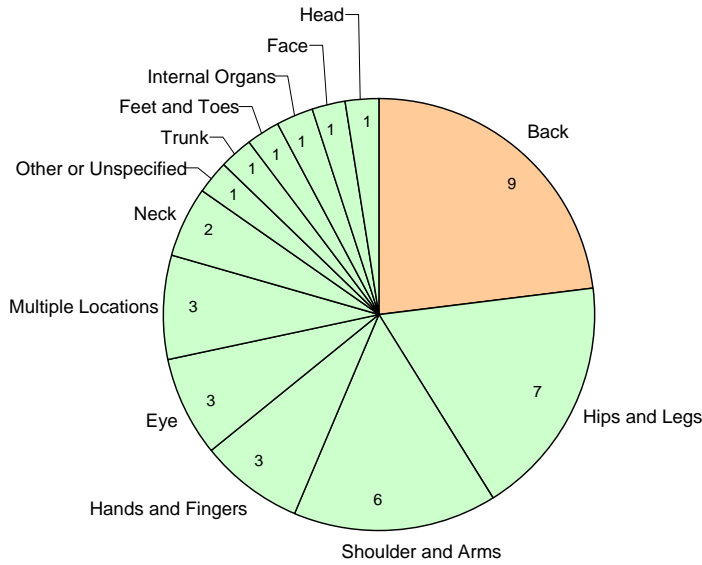
- There were 39 lost time injuries for a workforce of 3,742. A 43% decrease on the previous year's 68 injuries.
- The overall Lost Time Injury Frequency Rate was 4.4. A 47% decrease on the 2003-04 rate of 8.3.
- The average work days lost per injury were 25.7. A 5% increase on the 2003-04 rate of 24.4.
- The severity rate decreased to 113.1, down 44% from 202.5 in 2003-04.

Lost Time Injury Frequency Rate



Analysis of Lost Time Injuries

Injuries by Part of Body

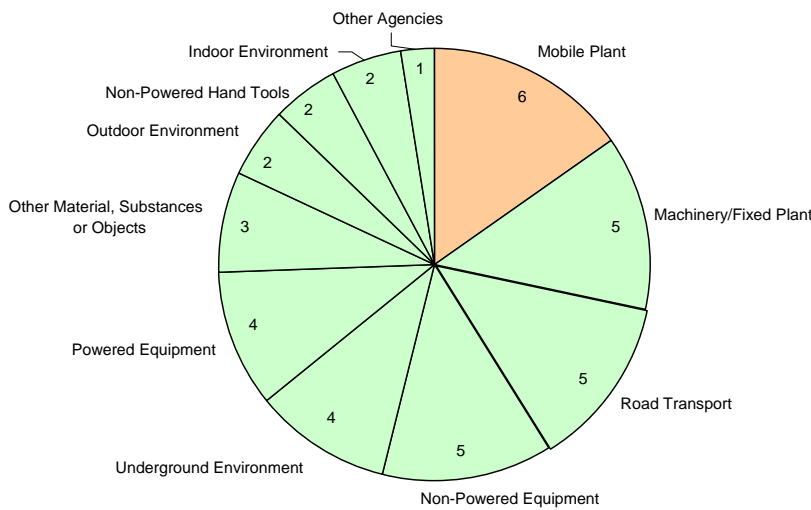


Injury Summary

Injuries by Part of Body

- 9 back injuries accounted for the largest portion of injuries at 22%.
- 7 hip and leg injuries accounted for the second largest portion of injuries at 17%.

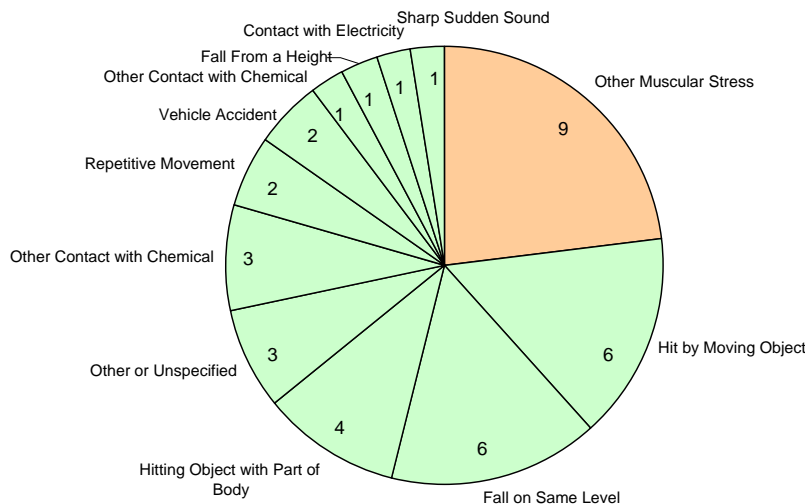
Injuries by Agency



Injuries by Agency

- 6 injuries involving mobile plant accounted for the largest portion of injuries at 15%.
- Machinery/fixed plant, road transport and non-powered equipment each recorded 5 injuries. This accounted for the second largest portion of injuries at 13% each.

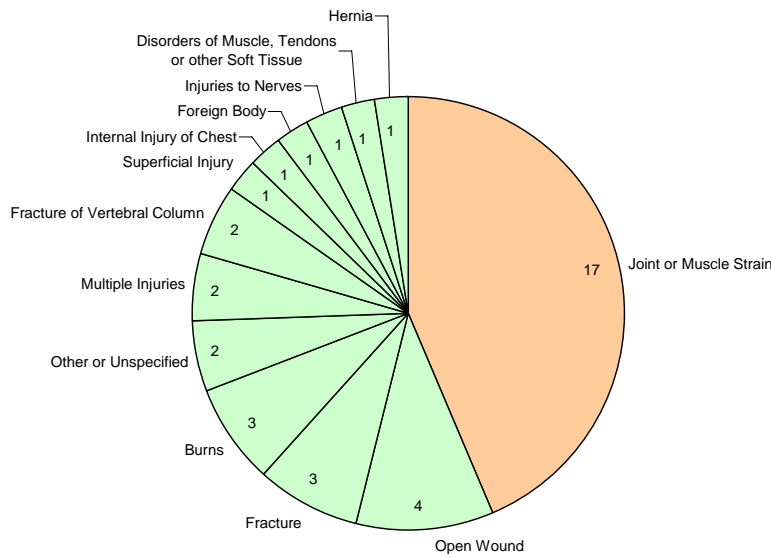
Injuries by Mechanism



Injuries by Mechanism

- 9 muscular stress injuries accounted for the majority of injuries at 22%.
- Hit by moving object and fall on same level each recorded 6 injuries. This accounted for the second largest portion of injuries at 15% each.

Injuries by Nature

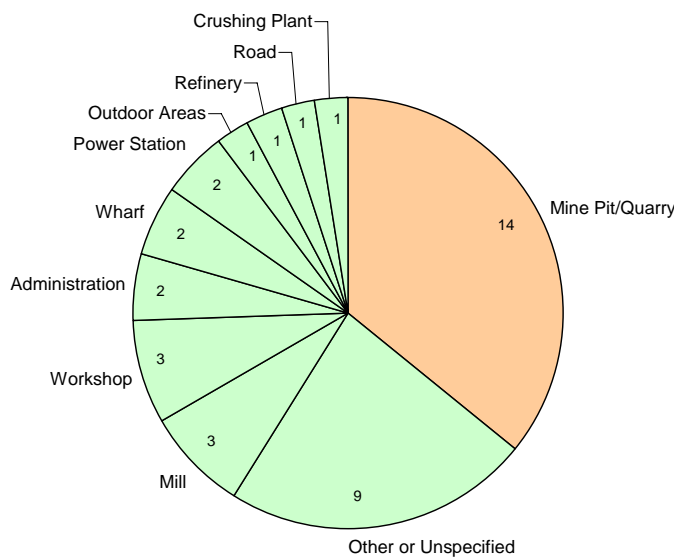


Injury Summary

Injuries by Nature

- 17 joint or muscle strains accounted for the majority of injuries at 43%.
- 4 open wound injuries accounted for the second largest portion of injuries at 9%

Injuries by Location



Injuries by Location

- 14 injuries at the mine pit/quarry, accounted for 35% of injuries.
- 9 injuries in unspecified locations, accounted for 22% of injuries.

Summary of Severe Incidents

- A fitter sustained severe burns to his body after being covered by caustic slurry whilst trying to clear a blockage in a digestive tank. Another employee was also injured in the incident and taken to hospital with burns to the face and arms.
- A truck driver sustained a back injury when the airline to the lumbar support of the seat failed.
- An excavator operator suffered head injuries when a loose sledge hammer head came off the handle.
- An electrician sustained a fractured arm when a rock dislodged through the mesh support on the wall and hit him.
- A fitter was seriously injured when part of the feed chute to the mill collapsed and fell on him.
- A bobcat driver sustained back injuries when the bobcat hit a buried rock during cleanup operations.

Definitions

Lost Time Injury (LTI)	An injury that results in a minimum of one full shift's absence.
Lost Time Injury Frequency Rate (LTIFR)	The number of lost time injuries per one million hours worked.
Severe Injury	An injury that results in a minimum of two weeks off work.
Duration Rate	The average lost time for every lost time injury.
Number of Hours Worked	The total number of hours worked by employees.
Severity Rate	The average number of days lost per one million hours worked.
Incident Rate	The number of fatalities or injuries per 100 employees.

This data is produced by the Department of Primary Industry, Fisheries and Mines and has been provided by Northern Territory mining operators as required under Mining Management Regulation 3. For safety information and/or copies of this document please contact: Minerals Statistics Officer, Phone: (08) 8999 5324, Fax: (08) 8999 6527 or Email: mineral.info@nt.gov.au Web: <http://www.nt.gov.au/dpifm> [Minerals & Energy]