



Northern Territory Mining Accident and Injury Summary 2003-04

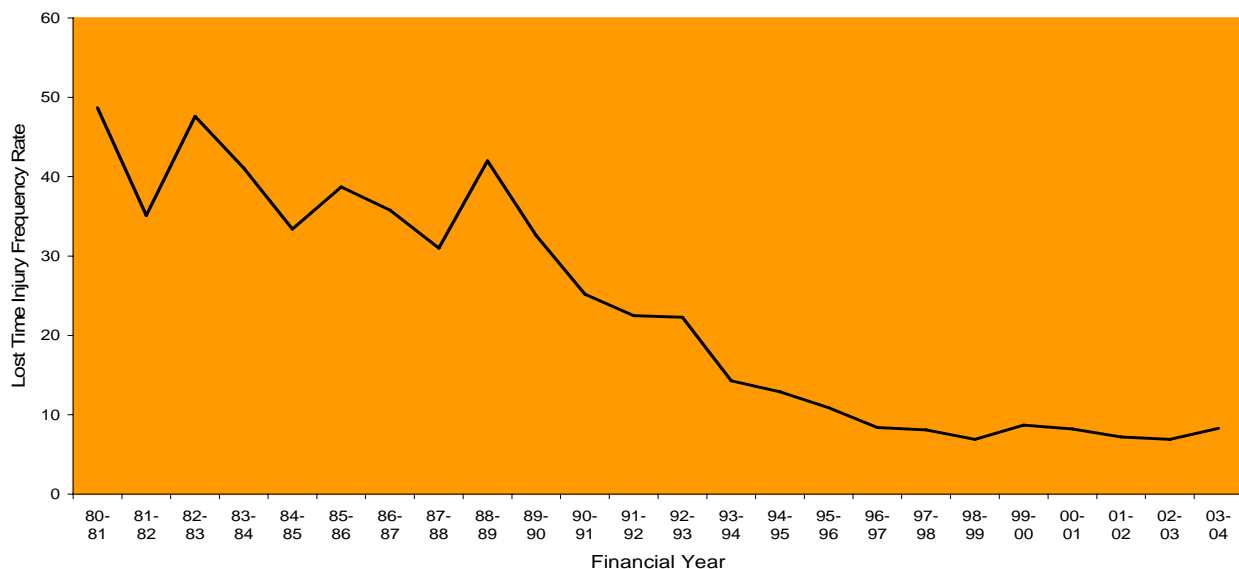
5 Year Summary					
	1999 - 00	2000 - 01	2001 - 02	2002 - 03	2003 - 04
Average Number of Mine Workers	3,671	3,535	3,553	3,628	3,525
Work Hours Exposure	9,130,354	7,891,003	8,013,560	8,273,614	8,211,514
Number of Lost Time Injuries	80	65	58	57	68
Number of Days Lost due to Injuries	971	1229	1508	1551	1712
Lost Time Injury Frequency Rate	8.8	8.2	7.2	6.9	8.3
Incidence Rate	2.2	1.8	1.6	1.6	1.9
Duration Rate	12.1	18.9	26.0	27.2	25.2
Severity Rate	106.8	155.0	187.2	187.8	209.2
Number of Fatal Injuries	0	0	0	0	0

Note: Any variations with previously published figures can be attributed to receipt of additional and/or superior data from operators. The 2003-04 data should be viewed with caution as it is preliminary and may not represent the final data set.

2003-04 Statistical Summary

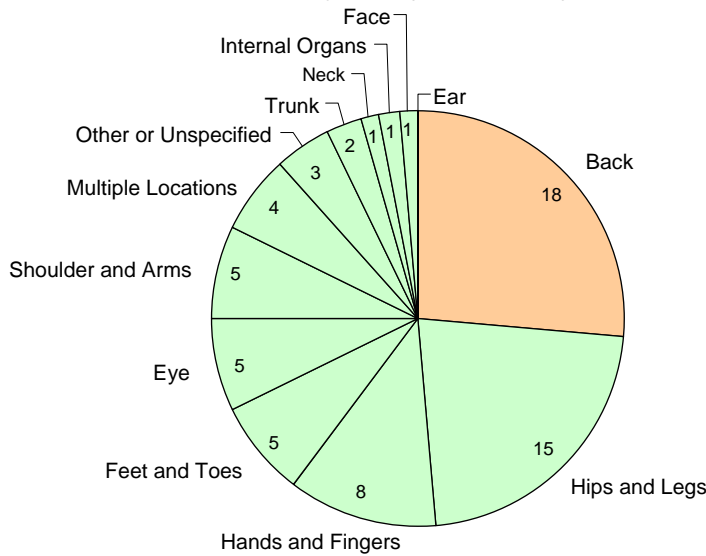
- There were 68 lost time injuries for a workforce of 3,525. A 19% increase on the previous year's 57 injuries.
- The overall Lost Time Injury Frequency Rate was 8.3. A 20% increase on the 2002-03 rate of 6.9.
- The average work days lost per injury was 25.2. A 7% decrease on the 2002-03 rate of 27.2.
- The severity rate increased to 209.2, up 11% from 187.8 in 2002-03.

Lost Time Injury Frequency Rate



Analysis of Lost Time Injuries

Injuries by Part of Body

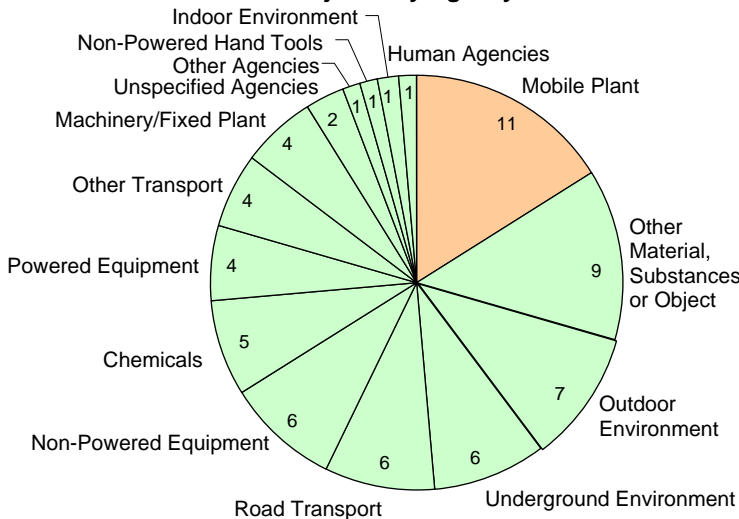


Injury Summary

Injuries by Part of Body

- 18 back injuries accounted for the largest portion of injuries at 26%.
- 15 hip/leg injuries accounted for the second largest portion of injuries at 22%.

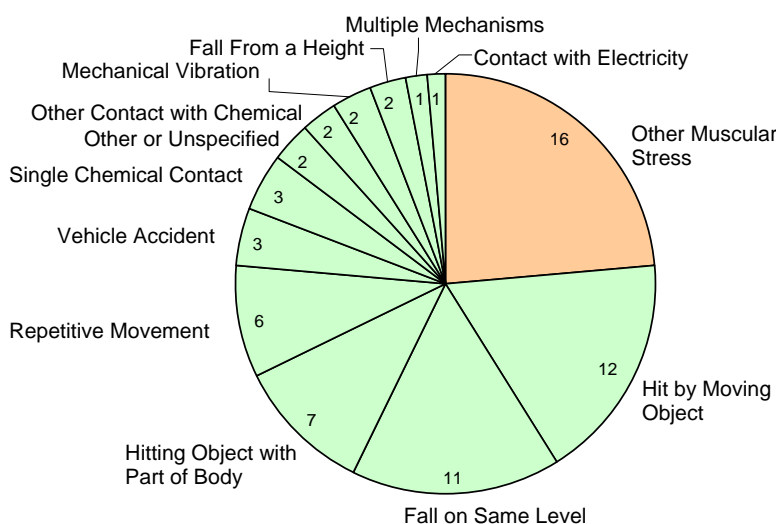
Injuries by Agency



Injuries by Agency

- 11 injuries involving mobile plant accounted for the largest portion of injuries at 16%.
- 9 injuries involving other material or substances accounted for the second largest portion of injuries at 13%.

Injuries by Mechanism



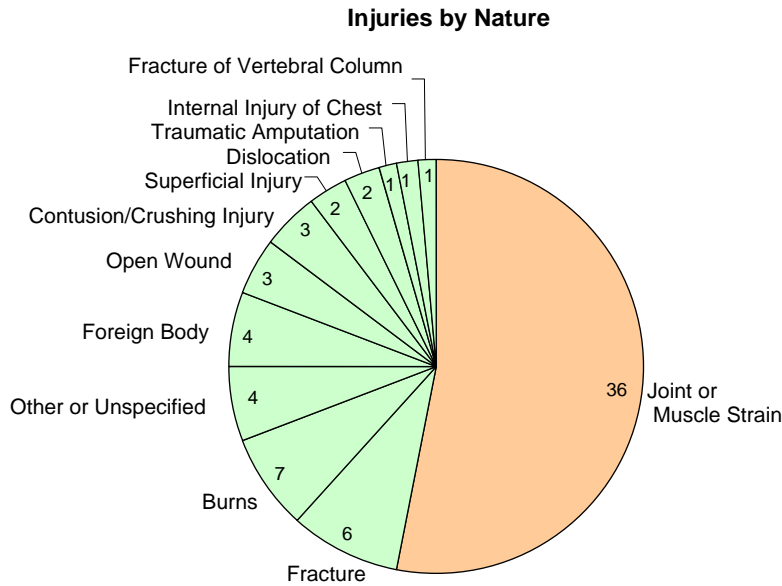
Injuries by Mechanism

- 16 muscular stress injuries accounted for the majority of injuries at 24%.
- 12 hit by moving object was the second largest mechanism of injury at 18%.

Injury Summary

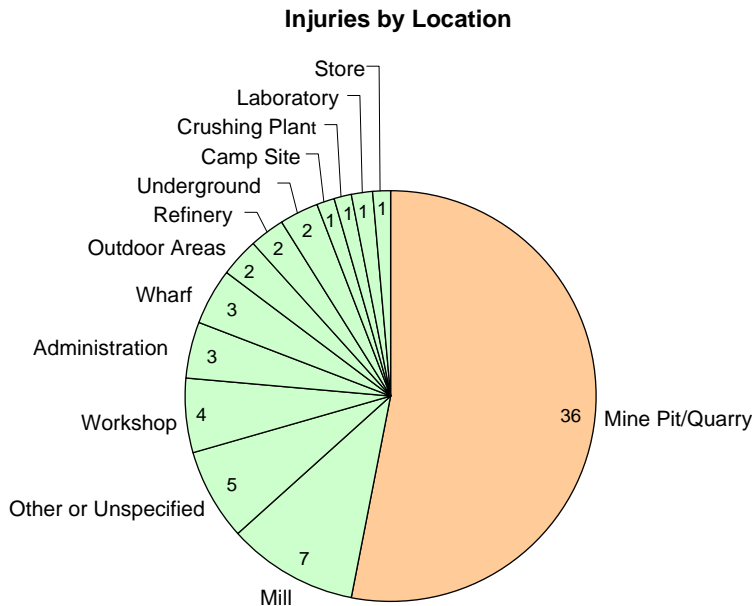
Injuries by Nature

- 36 joint or muscle strains accounted for the majority of injuries at 53%.
- 6 fractures accounted for the second largest portion of injuries at 9%



Injuries by Location

- 36 injuries occurred at the mine pit/quarry, accounting for 53% of injuries.
- 7 injuries occurred at the mill, accounting for 10% of injuries.



Review of Severe Incidents

- An employee received a strain to the groin whilst lifting a 20 litre drum of chemicals.
- A truck driver sustained a dislocated shoulder whilst climbing into his truck. He was wearing gloves and his left hand slipped off the grip and he fell onto his shoulder.
- A truck driver sustained injuries to both feet/ankles, when the dozer he was standing on engaged into reverse dragging his legs between the tracks and cabin access gate.
- A worker fell into an open drain, striking his knee and injuring his capella.
- A dump truck driver sustained superficial injuries to the face and a suspected fractured leg when the truck he was driving collided with a wall and rolled.
- A fitter strained his right ankle on a rock whilst climbing down the access ladder of a loader.

- A workshop employee sustained a lower back injury after over extending for a long period of time.
- A worker sustained severe lacerations and fractured thumb whilst removing lifter bolts from polymet lifters using an air driven jackhammer. The bolt being jacked out released itself quicker than anticipated, resulting in the operator's thumb being caught and squashed between the jackhammer and a higher bolt in the lifter.
- Whilst walking in the mill area between the storeroom and crib room, an employee stepped up onto a temporary platform via a brick which was being used as a step. The brick rolled causing the knee to bend and resulting in ligament damage.

Definitions

Lost Time Injury (LTI)	An injury that results in a minimum of one full shift's absence.
Lost Time Injury Frequency Rate (LTIFR)	The number of lost time injuries per one million hours worked.
Severe Injury	An injury that results in a minimum of two weeks off work.
Duration Rate	The average lost time for every lost time injury.
Number of Hours Worked	The total number of hours worked by employees.
Severity Rate	The average number of days lost per one million hours worked.
Incident Rate	The number of fatalities or injuries per 100 employees.

This data is produced by the Department of Business Industry and Resource Development and has been provided by Northern Territory mining operators as required under Regulation 3, of the Mining Management Regulations. For safety information and/or copies of this poster please contact: Minerals Statistics Officer, Mines and Petroleum Management Division on Phone: (08) 8999 5324, Fax: (08) 8999 6527 or Email: mineral.info@nt.gov.au Web: <http://www.dbird.nt.gov.au> [Minerals & Energy]