

**Department of Primary Industry, Fisheries and Mines**  
**Northern Territory Minerals Industry Safety Report**  
**1 April 2007 to 30 June 2007**

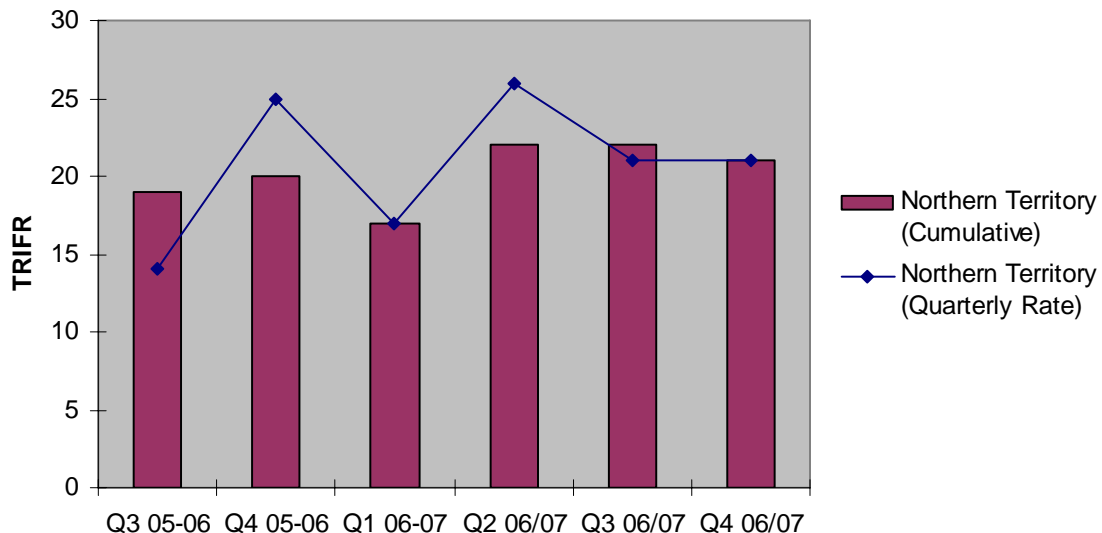
**Total Recordable Injuries Frequency Rate <sup>1</sup> (TRIFR)**

The All Industry TRIFR for 1 April 2007 to 30 June 2007 is 21, compared to 26 for the same reporting period in the previous year.

The TRIFR by sector for 1 April 2007 to 30 June 2007 is estimated at:

- Extractive operations, Nil
- Exploration operations, 193
- Mining operations, 20.

**Total Recordable Injury Frequency Rate (TRIFR)**



The Northern Territory cumulative TRIFR arises from adding consecutive quarterly rates in each financial year.

<sup>1</sup> Total Recordable Injury Frequency Rate includes fatalities, lost time injuries, serious injuries and medical treatment cases and is calculated on number of injuries per million hours worked.

### **First Aid Injuries <sup>2</sup>**

394 First Aid cases were reported from 1 April 2007 to 30 June 2007, compared to 304 for the same reporting period in the previous year.

### **Medical Treatment Injuries <sup>3</sup> (MTI)**

38 Medical Treated Injuries were reported from 1 April 2007 to 30 June 2007, compared to 48 for the same reporting period in the previous year.

### **Serious Injuries <sup>4</sup>**

14 Serious injuries were reported from 1 April 2007 to 30 June 2007, compared to 11 for the same reporting period in the previous year.

### **Lost Time Injuries <sup>5</sup> (LTI)**

27 Lost Time Injuries were reported from 1 April 2007 to 30 June 2007, compared to 15 for the same reporting period in the previous year.

### **Lost Time Injury Frequency Rate (LTIFR)**

The indicative total industry LTIFR for 1 April 2007 to 30 June 2007, is estimated at 7.3, compared to 5.3 for the same period in the previous year.

### **Severe Injuries <sup>6</sup>**

8 Severe injuries were reported for 1 April 2007 to 30 June 2007, compared to 3 for the same reporting period in the previous year.

### **Fatal Injuries**

1 Fatal injury was reported for 1 April 2007 to 30 June 2007. No Fatal injuries were reported for the same period in the previous year.

## **Severe Injury Breakdown 1 April 2007 – 30 June 2007**

<b>Breakdown Agency</b>		<b>Body Location</b>		<b>Nature of Injury</b>		<b>Mechanism of Injury</b>	
Mobile Plant	2	Hips and Legs	3	Joint or Muscle Strain	3	Fall from a height	3
Underground Environment	1	Hand and Fingers	2	Fractures	2	Fall on Same Level	2
Indoor Environment	1	Back	2	Multiple Injuries	1	Slide or Cave-In	1
Other Agencies	1	General and Unspecified	1	Open Wound	1	Unspecified Mechanisms	1
Outdoor Environment	1			Contusion or Crush Injury	1	Repetitive Movement	1
Machinery, Fixed Plant	1						
Non-powered Hand Tools	1						
<b>Total</b>	<b>8</b>		<b>8</b>		<b>8</b>		<b>8</b>

<sup>2</sup> An injury that requires First Aid treatment.

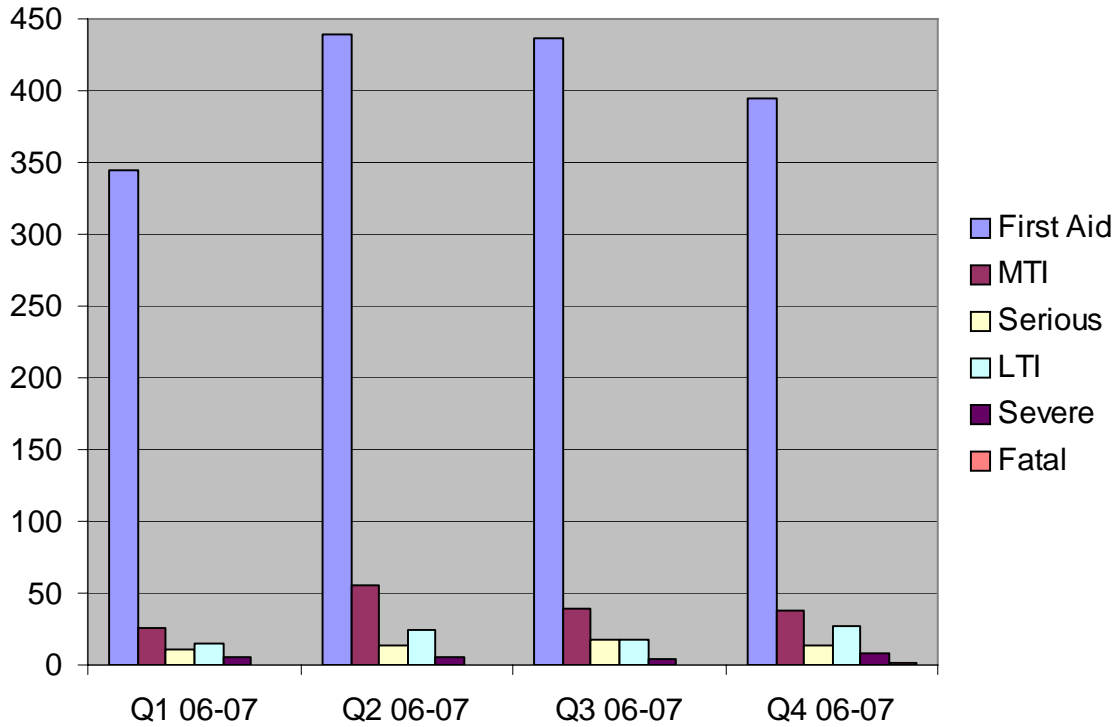
<sup>3</sup> An injury that requires treatment by a Medical Practitioner.

<sup>4</sup> If a person suffers an injury/illness and is unable to carry out their normal work activities for one or full more shifts.

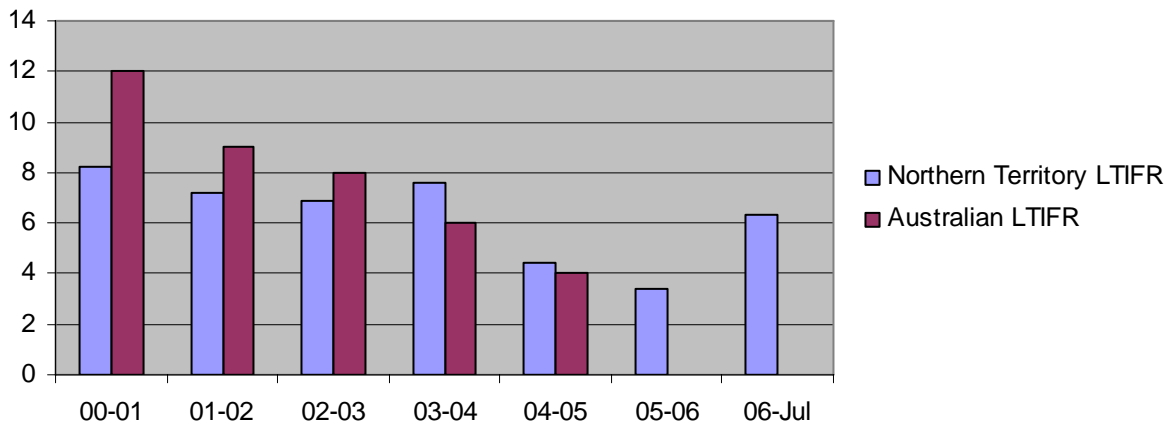
<sup>5</sup> An injury that results in a minimum of one full shift absence.

<sup>6</sup> An injury that results in a minimum of two weeks off work.

### Injury Type by Quarter



### Lost Time Injury Frequency Rate



Note: Minerals Council of Australia have not released the 2005-2006 Safety and Health Performance Report.