

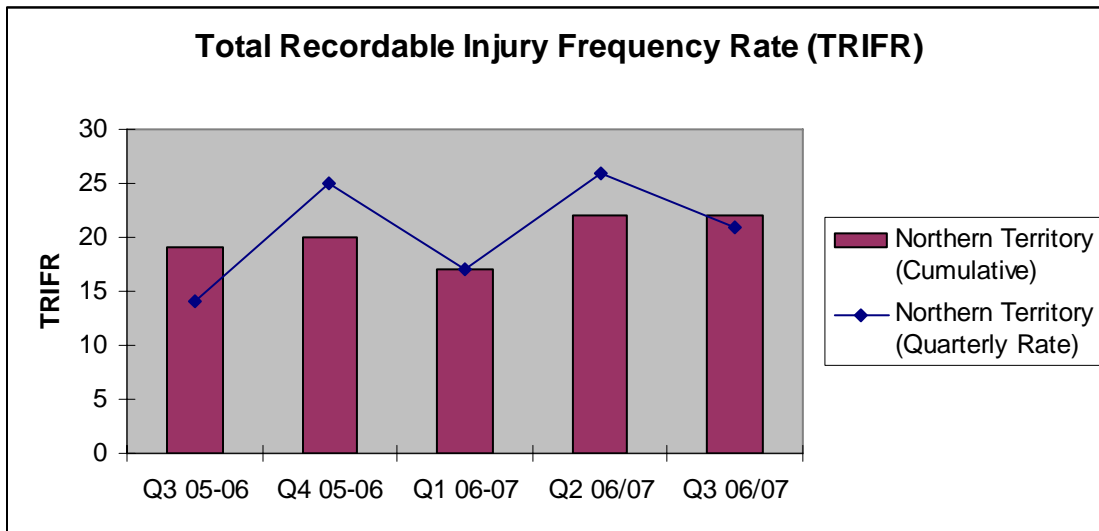
Department of Primary Industry, Fisheries and Mines
Northern Territory Minerals Industry Safety Report
1 January 2007 to 31 March 2007

Total Recordable Injuries Frequency Rate ¹ (TRIFR)

The All Industry TRIFR for 1 January 2007 to 31 March 2007 is 20.96, compared to 13.88 for the same reporting period in the previous year.

The TRIFR by sector for 1 January 2007 to 31 March 2007 is estimated at:

- Extractive operations, Nil
- Exploration operations, Nil
- Mining operations, 21.01.



The Northern Territory cumulative TRIFR arises from adding consecutive quarterly rates in each financial year.

¹ Total Recordable Injury Frequency Rate includes fatalities, lost time injuries, serious injuries and medical treatment cases and is calculated on number of injuries per million hours worked.

First Aid Injuries ²

436 First Aid cases were reported from 1 January 2007 to 31 March 2007, compared to 275 for the same reporting period in the previous year.

Medical Treatment Injuries ³ (MTI)

39 Medical Treated Injuries were reported from 1 January 2007 to 31 March 2007, compared to 26 for the same reporting period in the previous year.

Serious Injuries ⁴

17 Serious injuries were reported from 1 January 2007 to 31 March 2007, compared to 6 for the same reporting period in the previous year.

Lost Time Injuries ⁵ (LTI)

18 Lost Time Injuries were reported from 1 January 2007 to 31 March 2007, compared to 7 for the same reporting period in the previous year.

Lost Time Injury Frequency Rate (LTIFR)

The indicative total industry LTIFR for 1 January 2007 to 31 March 2007, is estimated at 5.1, compared to 2.5 for the same period in the previous year.

Severe Injuries ⁶

4 Severe injuries were reported for 1 January 2007 to 31 March 2007, compared to 2 for the same reporting period in the previous year.

Fatal Injuries

No Fatal injuries were reported for 1 January 2007 to 31 March 2007. No Fatal injuries were reported for the same period in the previous year.

Severe Injury Breakdown 1 January 2007 – 31 March 2007

Breakdown Agency		Body Location		Nature of Injury		Mechanism of Injury	
Outdoor Environment	2	Hips and Legs	2	Joint or Muscle Strain	2	Fall on same level	2
Human Agencies	1	Feet and Toes	1	Fractures	2	Hitting object	1
Other Material, Substances	1	Shoulders and Arms	1			Fall from Height	1
Total	4		4		4		4

² An injury that requires First Aid treatment.

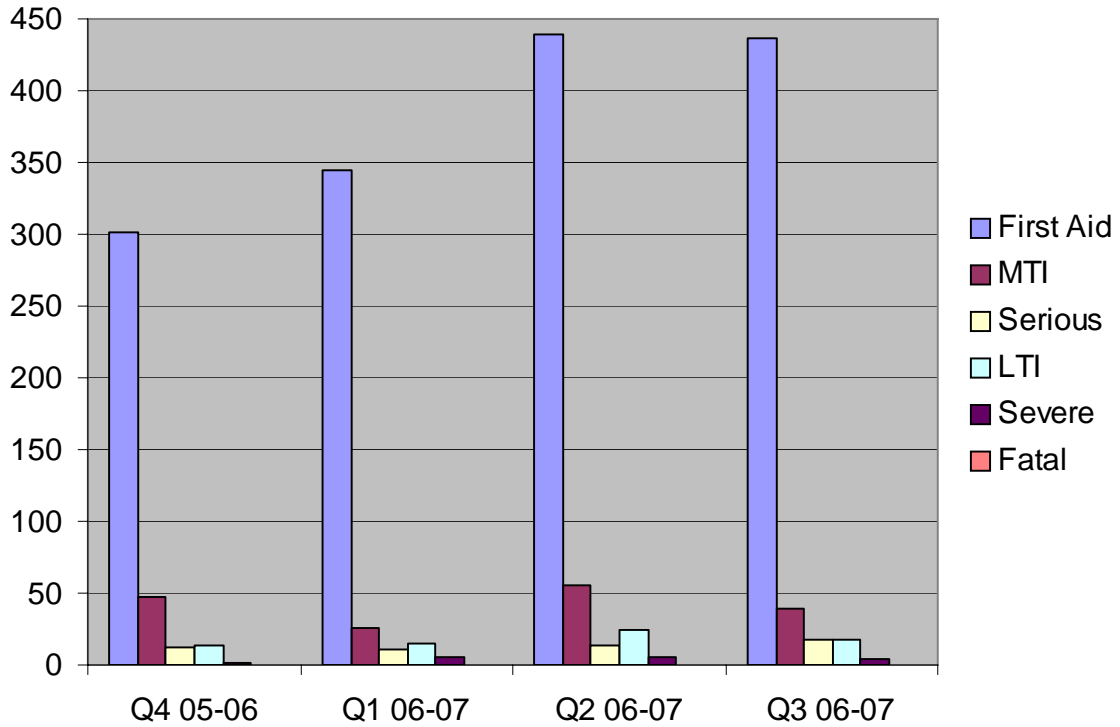
³ An injury that requires treatment by a Medical Practitioner.

⁴ If a person suffers an injury/illness and is unable to carry out their normal work activities for one or full more shifts.

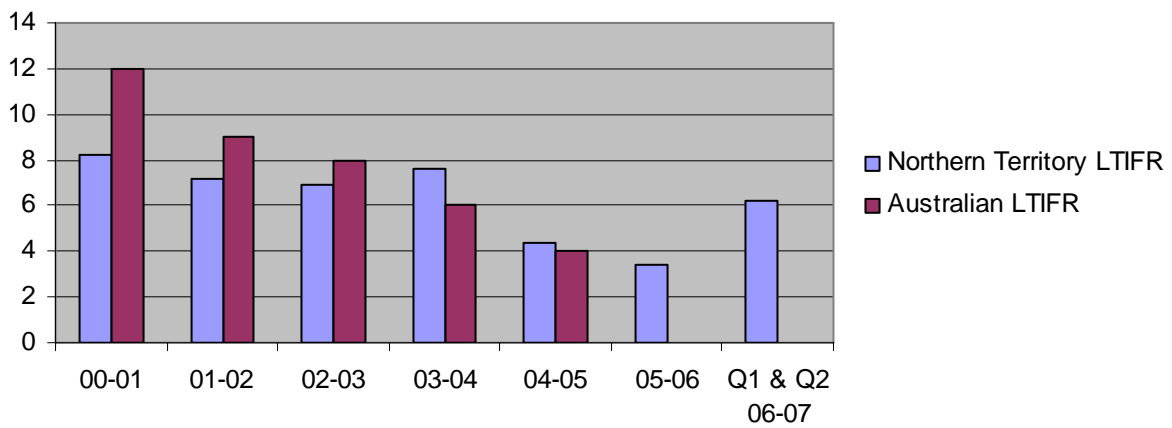
⁵ An injury that results in a minimum of one full shift absence.

⁶ An injury that results in a minimum of two weeks off work.

Injury Type by Quarter



Lost Time Injury Frequency Rate



Note: Minerals Council of Australia have not released the 2005-2006 Safety and Health Performance Report.