

# Department of Primary Industry, Fisheries and Mines

## Northern Territory Minerals Industry Safety Report

### 1 October 2006 to 31 December 2006

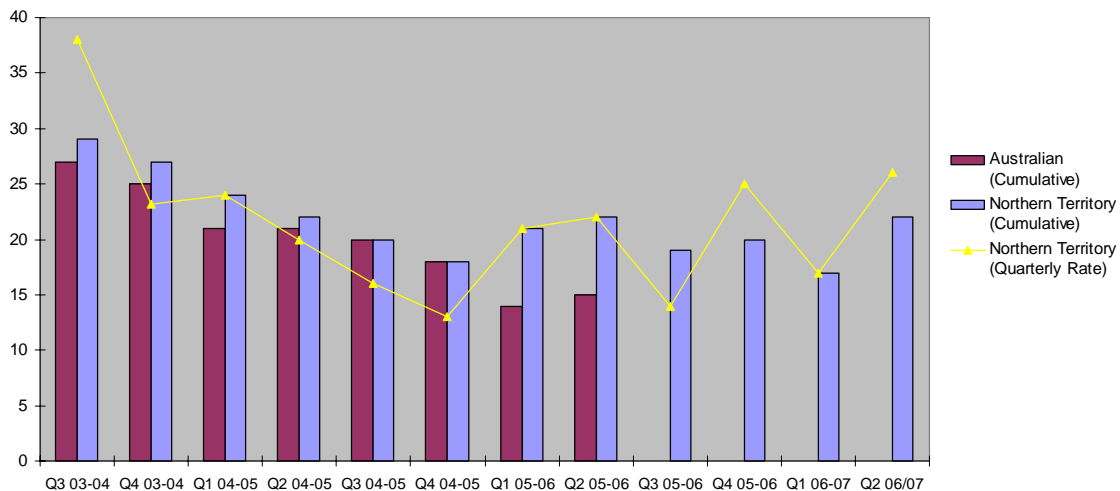
#### **Total Recordable Injuries Frequency Rate <sup>1</sup> (TRIFR)**

The All Industry TRIFR for 1 October 2006 to 31 December 2006 is 26, compared to 19 for the same reporting period in the previous year.

The TRIFR by sector for 1 October 2006 to 31 December 2006 is estimated at:

- Extractive operations, Nil
- Exploration operations, 64
- Mining operations, 26.

**Total Recordable Injury Frequency Rate (TRIFR)**



The Northern Territory cumulative TRIFR arises from adding consecutive quarterly rates in each financial year, and has been included to allow comparison with the national cumulative rate reported by the Minerals Council of Australia.

<sup>1</sup> Total Recordable Injury Frequency Rate includes fatalities, lost time injuries, serious injuries and medical treatment cases and is calculated on number of injuries per million hours worked.

### **First Aid Injuries <sup>2</sup>**

439 First Aid cases were reported from 1 October 2006 to 31 December 2006, compared to 225 for the same reporting period in the previous year.

### **Medical Treatment Injuries <sup>3</sup> (MTI)**

56 Medical Treated Injuries were reported from 1 October 2006 to 31 December 2006, compared to 37 for the same reporting period in the previous year.

### **Serious Injuries <sup>4</sup>**

13 Serious injuries were reported from 1 October 2006 to 31 December 2006, compared to 4 for the same reporting period in the previous year.

### **Lost Time Injuries <sup>5</sup> (LTI)**

25 Lost Time Injuries were reported from 1 October 2006 to 31 December 2006, compared to 9 for the same reporting period in the previous year.

### **Lost Time Injury Frequency Rate (LTIFR)**

The indicative total industry LTIFR for 1 October 2006 to 31 December 2006, is estimated at 6.9, compared to 3.3 for the same period in the previous year.

### **Severe Injuries <sup>6</sup>**

6 Severe injuries were reported for 1 October 2006 to 31 December 2006, compared to 4 for the same reporting period in the previous year.

### **Fatal Injuries**

No Fatal injuries were reported for 1 October 2006 to 31 December 2006. No Fatal injuries were reported for the same period in the previous year.

### **Severe Injury Breakdown 1 October 2006 – 31 December 2006**

<b>Breakdown Agency</b>		<b>Body Location</b>		<b>Nature of Injury</b>		<b>Mechanism of Injury</b>	
Mobile Plant	2	Back	2	Joint or Muscle Strain	4	Hit by Moving Object	1
Machinery/ Fixed Plant	1	Trunk	1	Open wound	1	Repetitive Movement	1
Chemicals	1	General Unspecified	1	Burns	1	Fall from Height	1
Underground Environment	1	Hands / Fingers	1			Single Chemical Contact	1
Outdoor Environment	1	Shoulders and Arms	1			Muscular Stress	1
						Vehicle Accident	1
<b>Total</b>	<b>6</b>		<b>6</b>		<b>6</b>		<b>6</b>

<sup>2</sup> An injury that requires First Aid treatment.

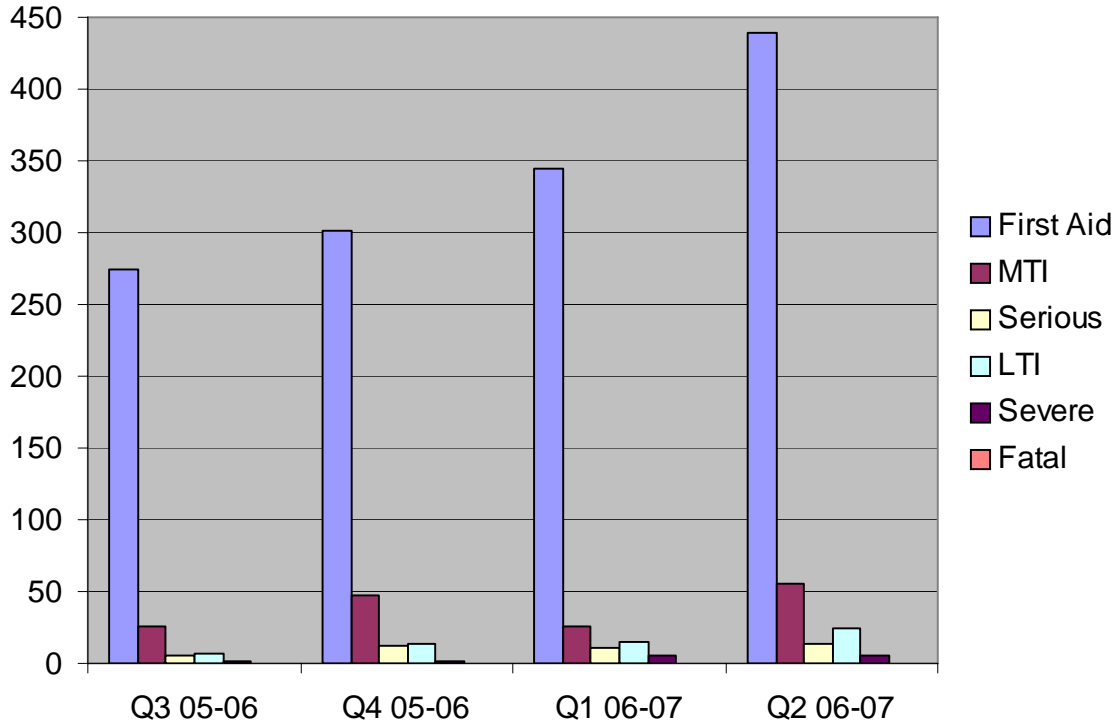
<sup>3</sup> An injury that requires treatment by a Medical Practitioner.

<sup>4</sup> If a person suffers an injury/illness and is unable to carry out their normal work activities for one or full more shifts.

<sup>5</sup> An injury that results in a minimum of one full shift absence.

<sup>6</sup> An injury that results in a minimum of two weeks off work.

### Injury Type by Quarter



### Lost Time Injury Frequency Rate

