



Pastoral Market Update

Live Cattle Exports via Darwin Port – **SEPTEMBER 2010**

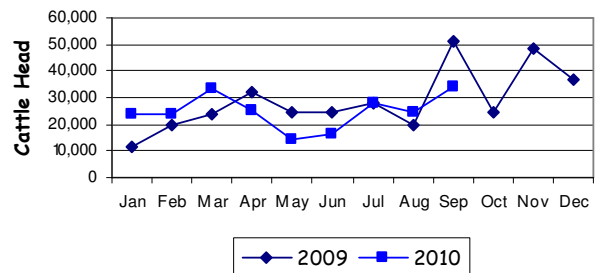
Please note that the "NT CATTLE" figures are NT cattle exported through the Port of Darwin only, some NT cattle are exported through interstate ports.

Destination	TOTAL CATTLE (including interstate)							# NT CATTLE						
	2008	2009	Last year 30/9/09	YTD 30/9/10	1-30 SEP	Previous Month	Difference	2008	2009	Last year 30/9/09	YTD 30/9/10	1-30 SEP	Previous Month	Difference
BRUNEI	4,288	3,131	1,891	1,744	0	796	-796	3,238	2,681	1,891	1,744	0	796	-796
INDONESIA	341,768	330,433	222,984	213,200	30,599	23,692	+6,907	276,293	288,887	211,107	190,344	30,599	21,628	+8,971
PHILIPPINES	12,247	10,422	8,635	6,481	1,604	0	+1,604	11,945	10,422	8,635	6,481	1,604	0	+1,604
SABAH	2,985	1,410	910	692	0	0	0	2,055	910	910	692	0	0	0
SARAWAK	2,340	0	0	1,615	1,615	0	+1,615	1,590	0	0	1,615	1,615	0	+1,615
W-MALAYSIA	1,296	1,918	1,918	0	0	0	0	418	1,918	1,918	0	0	0	0
EAST TIMOR	0	0	0	0	0	0	0	0	0	0	0	0	0	0
TOTAL	364,944	347,314	236,338	223,732	33,818	24,488	+9,330	295,539	304,818	224,461	200,876	33,818	22,424	+11,394
				-12,606							-23,585			

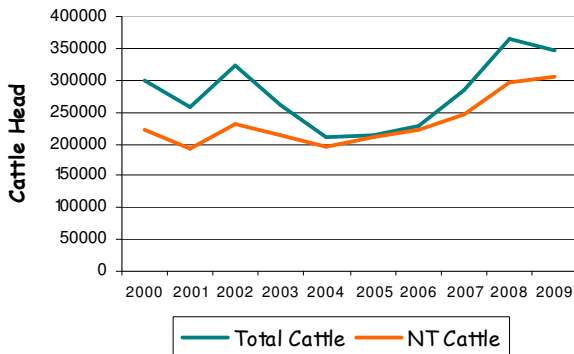
September at a glance

- 33,818 head of cattle through the Port of Darwin during September, 9,330 more than August and 17,407 less than September last year.
- 2010 total cattle figures indicate 12,606 head less than last year. NT cattle 22,585 less than last year.

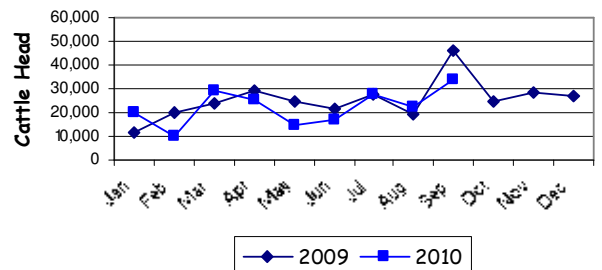
TOTAL Live Cattle Exports thru Port of Darwin 2009 v 2010



Live Cattle Exports thru the Port of Darwin (last 10 years)



NT Live Cattle Exports thru Port of Darwin 2009 v 2010



PREVIOUS 8 YEARS

Total Cattle, Port of Darwin								NT Cattle, Port of Darwin							
2002	2003	2004	2005	2006	2007	2008	2009	2002	2003	2004	2005	2006	2007	2008	2009
322,602	260,618	211,042	212,616	229,654	283,046	364,944	347,314	229,796	212,520	205,204	210,558	225,413	247,281	295,539	304,818



Pastoral Market Update

OTHER LIVESTOCK EXPORTS VIA DARWIN PORT (includes NT and Interstate Stock)

Destination	Buffalo			Camels			Goats			Horses			Sheep			Pigs		
	2009	2010	1-30 SEP	2009	2010	1-30 SEP	2009	2010	1-30 SEP	2009	2010	1-30 SEP	2009	2010	1-30 SEP	2009	2010	1-30 SEP
BRUNEI	327	0	0	0	0	0	397	1177	0	0	0	0	0	0	0	0	0	0
INDONESIA	3,274	2126	226	0	0	0	0	0	0	0	0	0	0	0	0	0	0	0
PHILIPPINES	0	0	0	0	0	0	0	0	0	0	0	0	531	0	0	0	0	0
W-MALAYSIA	0	0	0	0	0	0	0	0	0	0	0	0	0	0	0	0	0	0
SABAH	176	76	0	0	0	0	0	0	0	0	0	0	0	0	0	0	0	0
SARAWAK	0	0	0	0	0	0	0	280	280	0	0	0	0	0	0	0	0	0
TOTAL	3,777	2202	226	0	0	0	397	1457	280	0	0	0	531	0	0	0	0	0

NATIONAL CATTLE PRICES - W/E 1/10/2010

JAPAN OX									MEDIUM STEER										
Estimated dressed weight price (cents/kg)									Estimated dressed weight price (cents/kg)										
SALEYARDS				O.T.HOOKS					SALEYARDS				O.T.HOOKS						
NSW	QLD	SA	AV (Aust)	NSW	QLD	SA	AV (Aust)	NSW	QLD	SA	AV (Aust)	NSW	QLD	SA	AV (Aust)	NSW	QLD	SA	AV (Aust)
This week	342	338	350	342	323	318	Nq	326	This week	344	335	336	340	315	306	Nq	322		
Last week	334	333	334	328	323	318	Nq	326	Last week	351	339	333	348	315	306	Nq	322		
Year ago	294	290	303	395	301	281	nq	291	Year ago	301	296	308	301	281	276	Nq	292		
MEDIUM COW									TRADE STEER										
Estimated dressed weight price (cents/kg)									Estimated dressed weight price (cents/kg)										
SALEYARDS				O.T.HOOKS					SALEYARDS				O.T.HOOKS						
NSW	QLD	SA	AV (Aust)	NSW	QLD	SA	AV (Aust)	NSW	QLD	SA	AV (Aust)	NSW	QLD	SA	AV (Aust)	NSW	QLD	SA	AV (Aust)
This week	295	284	278	292	281	272	268	279	This week	368	380	329	364	328	306	305	323		
Last week	304	292	285	289	281	272	273	280	Last week	371	382	336	367	328	306	310	324		
Year ago	251	249	247	248	245	236	238	246	Year ago	328	316	307	326	297	281	nq	323		
LIVE EXPORT QUOTES									<p>Prices courtesy of Meat & Livestock Australia</p> <p>www.mla.com.au</p>										
Estimated live weight price (cents/kg)																			
LIGHT STEERS (280-400 kg)				HEAVY STEERS (400+ kg)															
Darwin		Fremantle		Darwin		Fremantle													
This week	195		nq		nq		nq												
Last week	200		nq		nq		nq												
Year ago	175		nq		170		nq												

CURRENCY EXCHANGE RATES

Key Currencies 1AUD =	Current 5.10.2010	Previous month 1.9.2010	3 months ago 1.7.2010	1 Year ago 1.10.2009	Pre-devaluation 01.07.1997
Brunei Dollar	1.29028	1.22403	1.27651	1.19722	1.076
Indonesian Rupiah	8,800.24	8,026.49	8,417.18	7,835.96	1830
Philippine Peso	42.48405	40.48799	41.3786	38.98950	19.84
Malaysian Ringgit	2.99447	2.80637	2.97576	2.89440	1.9
Euro	0.70586	0.70196	0.68966	0.57696	N/A
US Dollar	0.96803	0.89008	0.92421	0.83453	0.752

PREVIOUS 8 YEARS

Total Cattle, Port of Darwin								NT Cattle, Port of Darwin							
2002	2003	2004	2005	2006	2007	2008	2009	2002	2003	2004	2005	2006	2007	2008	2009
322,602	260,618	211,042	212,616	229,654	283,046	364,944	347,314	229,796	212,520	205,204	210,558	225,413	247,281	295,539	304,818