



# Pastoral Market Update

## Live Cattle Exports via Darwin Port – **OCTOBER 2010**

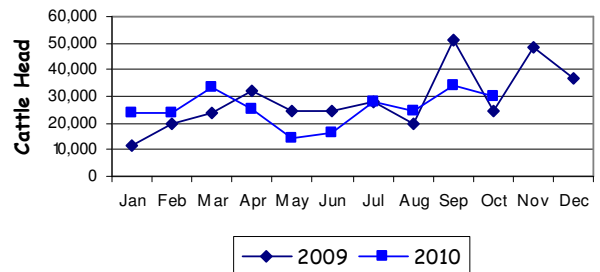
# Please note that the "NT CATTLE" figures are NT cattle exported through the Port of Darwin only, some NT cattle are exported through interstate ports.

Destination	TOTAL CATTLE (including interstate)							# NT CATTLE						
	2008	2009	Last year 31/10/09	YTD 31/10/10	1-31 OCT	Previous Month	Difference	2008	2009	Last year 31/10/09	YTD 31/10/10	1-31 OCT	Previous Month	Difference
BRUNEI	4,288	3,131	1,891	2,271	513	0	+513	3,238	2,681	1,891	2,271	513	0	+513
INDONESIA	341,768	330,433	247,703	236,607	23,407	30,599	-7,192	276,293	288,887	235,826	213,751	23,407	30,599	-7,192
PHILIPPINES	12,247	10,422	8,635	11,288	4,807	1,604	+3,203	11,945	10,422	8,635	11,288	4,807	1,604	+3,203
SABAH	2,985	1,410	910	692	0	0	0	2,055	910	910	692	0	0	0
SARAWAK	2,340	0	0	1,615	0	1,615	-1,615	1,590	0	0	1,615	0	1,615	-1,615
W-MALAYSIA	1,296	1,918	1,918	1,275	1,275	0	+1,275	418	1,918	1,918	1,275	1,275	0	+1,275
EAST TIMOR	0	0	0	0	0	0	0	0	0	0	0	0	0	0
<b>TOTAL</b>	<b>364,944</b>	<b>347,314</b>	<b>261,057</b>	<b>253,748</b>	<b>30,002</b>	<b>33,818</b>	<b>-3,816</b>	<b>295,539</b>	<b>304,818</b>	<b>249,180</b>	<b>230,892</b>	<b>30,002</b>	<b>33,818</b>	<b>-3,816</b>
				<b>-7,309</b>							<b>-18,288</b>			

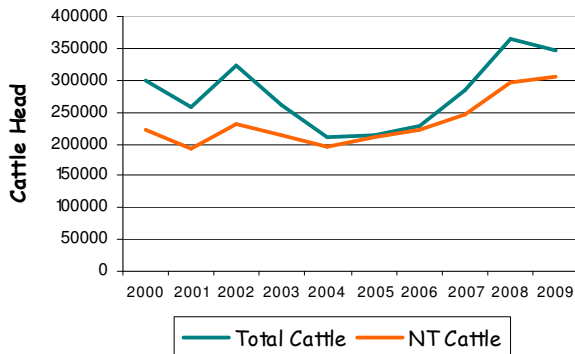
### October at a glance

- 30,002 head of cattle through the Port of Darwin during October, 3,816 less than September and 5,283 more than October last year.
- 2010 total cattle figures indicate 7,309 head less than last year. NT cattle 18,288 less than last year.

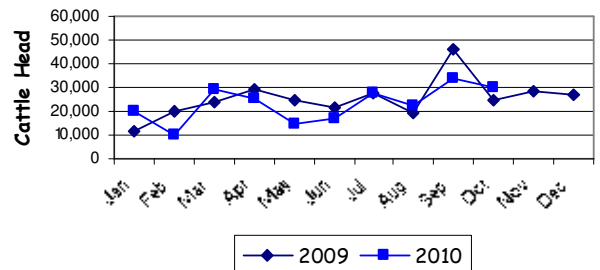
**TOTAL** Live Cattle Exports thru Port of Darwin 2009 v 2010



Live Cattle Exports thru the Port of Darwin (last 10 years)



**NT** Live Cattle Exports thru Port of Darwin 2009 v 2010



PREVIOUS 8 YEARS

Total Cattle, Port of Darwin								NT Cattle, Port of Darwin							
2002	2003	2004	2005	2006	2007	2008	2009	2002	2003	2004	2005	2006	2007	2008	2009
322,602	260,618	211,042	212,616	229,654	283,046	364,944	347,314	229,796	212,520	205,204	210,558	225,413	247,281	295,539	304,818



# Pastoral Market Update

## OTHER LIVESTOCK EXPORTS VIA DARWIN PORT (includes NT and Interstate Stock)

Destination	Buffalo			Camels			Goats			Horses			Sheep			Pigs		
	2009	2010	1-31 OCT	2009	2010	1-31 OCT	2009	2010	1-31 OCT	2009	2010	1-31 OCT	2009	2010	1-31 OCT	2009	2010	1-31 OCT
BRUNEI	327	312	312	0	0	0	397	1605	428	0	0	0	0	0	0	0	0	0
INDONESIA	3,274	2126	0	0	0	0	0	0	0	0	0	0	0	0	0	0	0	0
PHILIPPINES	0	0	0	0	0	0	0	0	0	0	0	0	531	0	0	0	0	0
W-MALAYSIA	0	0	0	0	0	0	0	0	0	0	0	0	0	0	0	0	0	0
SABAH	176	76	0	0	0	0	0	0	0	0	0	0	0	0	0	0	0	0
SARAWAK	0	0	0	0	0	0	0	280	0	0	0	0	0	0	0	0	0	0
<b>TOTAL</b>	<b>3,777</b>	<b>2514</b>	<b>312</b>	<b>0</b>	<b>0</b>	<b>0</b>	<b>397</b>	<b>1885</b>	<b>428</b>	<b>0</b>	<b>0</b>	<b>0</b>	<b>531</b>	<b>0</b>	<b>0</b>	<b>0</b>	<b>0</b>	<b>0</b>

## NATIONAL CATTLE PRICES - W/E 29/10/2010

JAPAN OX									MEDIUM STEER										
Estimated dressed weight price (cents/kg)									Estimated dressed weight price (cents/kg)										
SALEYARDS				O.T.HOOKS					SALEYARDS				O.T.HOOKS						
NSW	QLD	SA	AV (Aust)	NSW	QLD	SA	AV (Aust)	NSW	QLD	SA	AV (Aust)	NSW	QLD	SA	AV (Aust)	NSW	QLD	SA	AV (Aust)
This week	319	325	307	324	313	312	Nq	315	This week	326	321	329	324	306	306	Nq	313		
Last week	328	326	318	326	318	314	Nq	319	Last week	330	334	320	332	310	306	Nq	321		
Year ago	294	290	288	291	281	279	nq	283	Year ago	286	294	283	287	270	276	Nq	289		
MEDIUM COW									TRADE STEER										
Estimated dressed weight price (cents/kg)									Estimated dressed weight price (cents/kg)										
SALEYARDS				O.T.HOOKS					SALEYARDS				O.T.HOOKS						
NSW	QLD	SA	AV (Aust)	NSW	QLD	SA	AV (Aust)	NSW	QLD	SA	AV (Aust)	NSW	QLD	SA	AV (Aust)	NSW	QLD	SA	AV (Aust)
This week	290	280	271	282	273	271	263	272	This week	371	371	314	348	319	302	305	315		
Last week	286	273	290	279	276	273	263	275	Last week	371	375	315	353	323	304	305	322		
Year ago	243	248	256	244	234	235	238	242	Year ago	313	308	294	310	283	279	nq	318		
LIVE EXPORT QUOTES									<p>Prices courtesy of Meat &amp; Livestock Australia</p> <p>www.mla.com.au</p>										
Estimated <u>live</u> weight price (cents/kg)																			
LIGHT STEERS (280-400 kg)				HEAVY STEERS (400+ kg)															
Darwin		Fremantle		Darwin		Fremantle													
This week	195		nq		nq		nq												
Last week	195		nq		nq		nq												
Year ago	175		nq		170		nq												

## CURRENCY EXCHANGE RATES

Key Currencies 1AUD =	Current 3.11.2010	Previous month 1.10.2010	3 months ago 1.8.2010	1 Year ago 1.11.2009	Pre-devaluation 01.07.1997
Brunei Dollar	1.30096	1.29028	1.24893	1.28101	1.076
Indonesian Rupiah	8,806.67	8,800.24	8,084.74	8,654.71	1830
Philippine Peso	42.58700	42.4805	41.26999	42.87129	19.84
Malaysian Ringgit	3.07940	2.99447	2.88542	3.87390	1.9
Euro	0.71335	0.70586	0.69019	0.61232	N/A
US Dollar	0.99614	0.96803	0.91196	0.90009	0.752

## PREVIOUS 8 YEARS

Total Cattle, Port of Darwin								NT Cattle, Port of Darwin							
2002	2003	2004	2005	2006	2007	2008	2009	2002	2003	2004	2005	2006	2007	2008	2009
322,602	260,618	211,042	212,616	229,654	283,046	364,944	347,314	229,796	212,520	205,204	210,558	225,413	247,281	295,539	304,818