



Pastoral Market Update

Live Cattle Exports via Darwin Port – **MAY 2010**

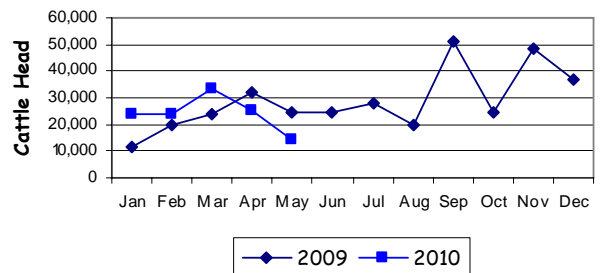
Please note that the "NT CATTLE" figures are NT cattle exported through the Port of Darwin only, some NT cattle are exported through interstate ports.

Destination	TOTAL CATTLE (including interstate)							# NT CATTLE						
	2008	2009	Last year 31/5/09	YTD 31/5/10	1-31 MAY	Previous Month	Difference	2008	2009	Last year 31/5/09	YTD 31/5/10	1-31 MAY	Previous Month	Difference
BRUNEI	4,288	3,131	991	716	0	0	0	3,238	2,681	991	716	0	0	0
INDONESIA	341,768	330,433	106,708	117,098	11,638	25,410	-13,772	276,293	288,887	103,360	96,306	11,638	25,410	-13,772
PHILIPPINES	12,247	10,422	4,160	2,964	2,964	0	+2,964	11,945	10,422	4,160	2,964	2,964	0	+2,964
SABAH	2,985	1,410	0	0	0	0	0	2,055	910	0	0	0	0	0
SARAWAK	2,340	0	0	0	0	0	0	1,590	0	0	0	0	0	0
W-MALAYSIA	1,296	1,918	0	0	0	0	0	418	1,918	0	0	0	0	0
EAST TIMOR	0	0	0	0	0	0	0	0	0	0	0	0	0	0
TOTAL	364,944	347,314	111,859	120,778	14,602	25,410	-10,808	295,539	304,818	108,511	99,986	14,602	25,410	-10,808
				+8,919							-8,525			

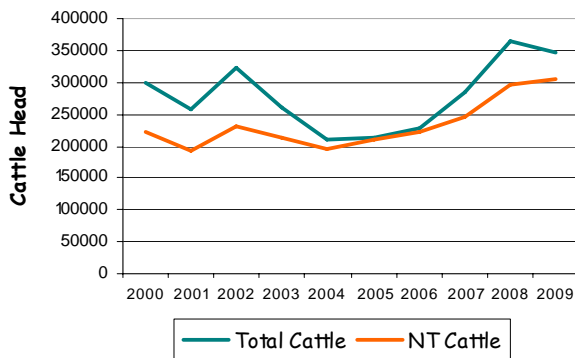
MAY at a glance

- 14,602 head of cattle through the Port of Darwin during May, 10,808 less than April and 9,665 less than May last year.
- 2010 total cattle figures indicate 8,919 head more than last year. NT cattle 8,525 less than last year.

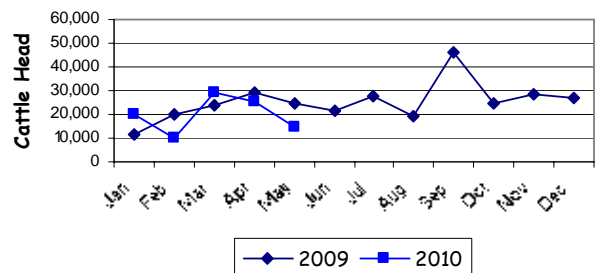
TOTAL Live Cattle Exports thru Port of Darwin 2009 v 2010



Live Cattle Exports thru the Port of Darwin (last 10 years)



NT Live Cattle Exports thru Port of Darwin 2009 v 2010



PREVIOUS 8 YEARS

Total Cattle, Port of Darwin								NT Cattle, Port of Darwin							
2002	2003	2004	2005	2006	2007	2008	2009	2002	2003	2004	2005	2006	2007	2008	2009
322,602	260,618	211,042	212,616	229,654	283,046	364,944	347,314	229,796	212,520	205,204	210,558	225,413	247,281	295,539	304,818




Pastoral Market Update

OTHER LIVESTOCK EXPORTS VIA DARWIN PORT (includes NT and Interstate Stock)

Destination	Buffalo			Camels			Goats			Horses			Sheep			Pigs		
	2009	2010	1-31 MAY	2009	2010	1-31 MAY	2009	2010	1-31 MAY	2009	2010	1-31 MAY	2009	2010	1-31 MAY	2009	2010	1-31 MAY
BRUNEI	327	0	0	0	0	0	397	880	0	0	0	0	0	0	0	0	0	0
INDONESIA	3,274	1275	99	0	0	0	0	0	0	0	0	0	0	0	0	0	0	0
PHILIPPINES	0	0	0	0	0	0	0	0	0	0	0	0	531	0	0	0	0	0
W-MALAYSIA	0	0	0	0	0	0	0	0	0	0	0	0	0	0	0	0	0	0
SABAH	176	0	0	0	0	0	0	0	0	0	0	0	0	0	0	0	0	0
SARAWAK	0	0	0	0	0	0	0	0	0	0	0	0	0	0	0	0	0	0
TOTAL	3,777	1275	99	0	0	0	397	880	0	0	0	0	531	0	0	0	0	0

NATIONAL CATTLE PRICES - W/E 28/5/2010

JAPAN OX									MEDIUM STEER										
Estimated dressed weight price (cents/kg)									Estimated dressed weight price (cents/kg)										
SALEYARDS				O.T.HOOKS					SALEYARDS				O.T.HOOKS						
NSW	QLD	SA	AV (Aust)	NSW	QLD	SA	AV (Aust)	NSW	QLD	SA	AV (Aust)	NSW	QLD	SA	AV (Aust)	NSW	QLD	SA	AV (Aust)
This week	319	325	336	329	316	317	Nq	307	This week	324	334	332	330	306	307	Nq	303		
Last week	307	318	nq	324	311	314	Nq	304	Last week	321	322	341	323	303	303	Nq	299		
Year ago	308	286	nq	298	282	280	nq	280	Year ago	297	303	328	301	280	275	Nq	285		
US COW									TRADE STEER										
Estimated dressed weight price (cents/kg)									Estimated dressed weight price (cents/kg)										
SALEYARDS				O.T.HOOKS					SALEYARDS				O.T.HOOKS						
NSW	QLD	SA	AV (Aust)	NSW	QLD	SA	AV (Aust)	NSW	QLD	SA	AV (Aust)	NSW	QLD	SA	AV (Aust)	NSW	QLD	SA	AV (Aust)
This week	273	262	309	278	241	243	250	256	This week	345	353	327	346	312	305	310	315		
Last week	269	262	314	271	239	240	250	249	Last week	346	345	336	344	310	302	310	314		
Year ago	247	250	272	252	232	226	220	233	Year ago	329	313	313	327	290	280	nq	311		
LIVE EXPORT QUOTES									<p>Prices courtesy of Meat & Livestock Australia</p>  <p>www.mla.com.au</p>										
Estimated <u>live</u> weight price (cents/kg)																			
LIGHT STEERS (280-400 kg)				HEAVY STEERS (400+ kg)															
Darwin		Fremantle		Darwin		Fremantle													
This week	nq	nq	nq	nq	nq	nq	nq	nq											
Last week	165	nq	nq	nq	nq	nq	nq	nq											
Year ago	160	nq	155	nq	nq	nq	nq	nq											

CURRENCY EXCHANGE RATES

Key Currencies 1AUD =	Current 3.6.2010	Previous month 1.5.2010	3 months ago 1.3.2010	1 Year ago 1.6.2009	Pre-devaluation 01.07.1997
Brunei Dollar	1.16289	1.25430	1.24251	1.17825	1.076
Indonesian Rupiah	7,774.62	8,400.67	8,323.79	8,301.54	1830
Philippine Peso	38.8482	41.1219	41.7793	38.29722	19.84
Malaysian Ringgit	2.75701	2.96064	3.03421	2.82240	1.9
Euro	0.68346	0.70032	0.66065	0.56999	N/A
US Dollar	0.83577	0.92575	0.90063	0.80734	0.752

PREVIOUS 8 YEARS

Total Cattle, Port of Darwin								NT Cattle, Port of Darwin							
2002	2003	2004	2005	2006	2007	2008	2009	2002	2003	2004	2005	2006	2007	2008	2009
322,602	260,618	211,042	212,616	229,654	283,046	364,944	347,314	229,796	212,520	205,204	210,558	225,413	247,281	295,539	304,818