



Pastoral Market Update

Live Cattle Exports via Darwin Port – **AUGUST 2010**

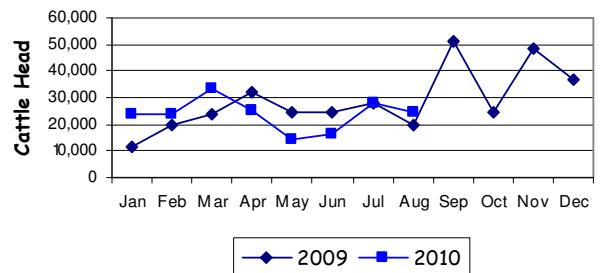
Please note that the "NT CATTLE" figures are NT cattle exported through the Port of Darwin only, some NT cattle are exported through interstate ports.

Destination	TOTAL CATTLE (including interstate)							# NT CATTLE						
	2008	2009	Last year 31/8/09	YTD 31/8/10	1-31 AUG	Previous Month	Difference	2008	2009	Last year 31/8/09	YTD 31/8/10	1-31 AUG	Previous Month	Difference
BRUNEI	4,288	3,131	1,891	1,744	796	0	+796	3,238	2,681	1,891	1,744	796	0	+796
INDONESIA	341,768	330,433	173,677	182,601	23,692	27,997	-4,305	276,293	288,887	166,805	159,745	21,628	27,997	-6,369
PHILIPPINES	12,247	10,422	8,635	4,877	0	0	0	11,945	10,422	8,635	4,877	0	0	0
SABAH	2,985	1,410	910	692	0	0	0	2,055	910	910	692	0	0	0
SARAWAK	2,340	0	0	0	0	0	0	1,590	0	0	0	0	0	0
W-MALAYSIA	1,296	1,918	0	0	0	0	0	418	1,918	0	0	0	0	0
EAST TIMOR	0	0	0	0	0	0	0	0	0	0	0	0	0	0
TOTAL	364,944	347,314	185,113	189,914	24,488	27,997	-3,509	295,539	304,818	178,241	167,058	22,424	27,997	-5,573
				+4,801							-11,183			

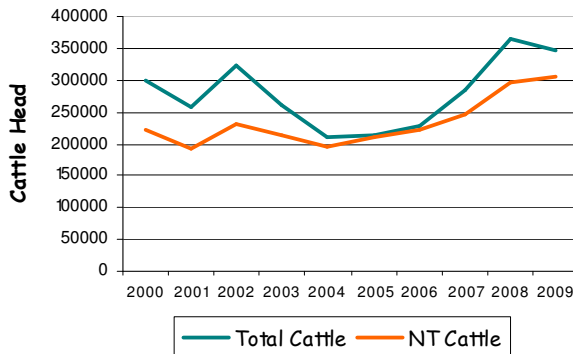
August at a glance

- 24,488 head of cattle through the Port of Darwin during August, 3,509 less than July and 4,112 more than August last year.
- 2010 total cattle figures indicate 4,801 head more than last year. NT cattle 11,183 less than last year.

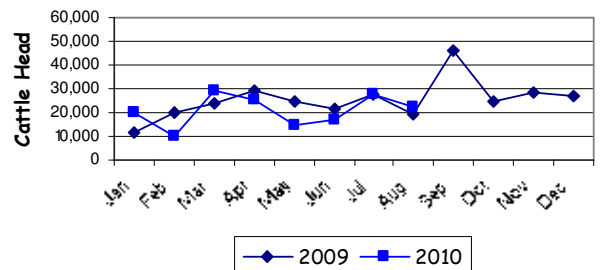
TOTAL Live Cattle Exports thru Port of Darwin 2009 v 2010



Live Cattle Exports thru the Port of Darwin (last 10 years)



NT Live Cattle Exports thru Port of Darwin 2009 v 2010



PREVIOUS 8 YEARS

Total Cattle, Port of Darwin								NT Cattle, Port of Darwin							
2002	2003	2004	2005	2006	2007	2008	2009	2002	2003	2004	2005	2006	2007	2008	2009
322,602	260,618	211,042	212,616	229,654	283,046	364,944	347,314	229,796	212,520	205,204	210,558	225,413	247,281	295,539	304,818



Pastoral Market Update

OTHER LIVESTOCK EXPORTS VIA DARWIN PORT (includes NT and Interstate Stock)

Destination	Buffalo			Camels			Goats			Horses			Sheep			Pigs		
	2009	2010	1-31 AUG	2009	2010	1-31 AUG	2009	2010	1-31 AUG	2009	2010	1-31 AUG	2009	2010	1-31 AUG	2009	2010	1-31 AUG
BRUNEI	327	0	0	0	0	0	397	1177	106	0	0	0	0	0	0	0	0	0
INDONESIA	3,274	1900	448	0	0	0	0	0	0	0	0	0	0	0	0	0	0	0
PHILIPPINES	0	0	0	0	0	0	0	0	0	0	0	0	531	0	0	0	0	0
W-MALAYSIA	0	0	0	0	0	0	0	0	0	0	0	0	0	0	0	0	0	0
SABAH	176	76	0	0	0	0	0	0	0	0	0	0	0	0	0	0	0	0
SARAWAK	0	0	0	0	0	0	0	0	0	0	0	0	0	0	0	0	0	0
TOTAL	3,777	1976	448	0	0	0	397	1177	106	0	0	0	531	0	0	0	0	0

NATIONAL CATTLE PRICES - W/E 27/8/2010

JAPAN OX									MEDIUM STEER										
Estimated dressed weight price (cents/kg)									Estimated dressed weight price (cents/kg)										
SALEYARDS				O.T.HOOKS					SALEYARDS				O.T.HOOKS						
NSW	QLD	SA	AV (Aust)	NSW	QLD	SA	AV (Aust)	NSW	QLD	SA	AV (Aust)	NSW	QLD	SA	AV (Aust)	NSW	QLD	SA	AV (Aust)
This week	342	330	325	332	316	319	Nq	310	This week	333	324	343	330	310	306	Nq	307		
Last week	329	325	341	335	318	318	Nq	310	Last week	328	317	332	342	310	306	Nq	305		
Year ago	302	306	nq	305	300	298	nq	296	Year ago	303	310	353	355	398	293	Nq	297		
US COW									TRADE STEER										
Estimated dressed weight price (cents/kg)									Estimated dressed weight price (cents/kg)										
SALEYARDS				O.T.HOOKS					SALEYARDS				O.T.HOOKS						
NSW	QLD	SA	AV (Aust)	NSW	QLD	SA	AV (Aust)	NSW	QLD	SA	AV (Aust)	NSW	QLD	SA	AV (Aust)	NSW	QLD	SA	AV (Aust)
This week	299	259	292	283	248	260	250	259	This week	368	364	330	358	323	308	310	324		
Last week	293	265	265	275	247	260	250	259	Last week	371	356	341	360	323	309	310	324		
Year ago	260	251	298	255	240	260	240	246	Year ago	324	317	322	326	298	295	nq	323		
LIVE EXPORT QUOTES									<p>Prices courtesy of Meat & Livestock Australia</p> <p>www.mla.com.au</p>										
Estimated <u>live</u> weight price (cents/kg)																			
LIGHT STEERS (280-400 kg)				HEAVY STEERS (400+ kg)															
Darwin		Fremantle		Darwin		Fremantle													
This week	200		nq		nq		nq												
Last week	195		nq		nq		nq												
Year ago	175		nq		170		nq												

CURRENCY EXCHANGE RATES

Key Currencies 1AUD =	Current 1.9.2010	Previous month 1.7.2010	3 months ago 1.4.2010	1 Year ago 1.9.2009	Pre-devaluation 01.07.1997
Brunei Dollar	1.22403	1.24893	1.24251	1.22205	1.076
Indonesian Rupiah	8,028.49	8,084.74	8,323.79	8,179.61	1830
Philippine Peso	40.48799	41.26999	41.7793	40.41892	19.84
Malaysian Ringgit	2.80637	2.88542	3.03421	2.94756	1.9
Euro	0.70196	0.69019	0.66065	0.58504	N/A
US Dollar	0.89008	0.91195	0.90063	0.84250	0.752

PREVIOUS 8 YEARS

Total Cattle, Port of Darwin								NT Cattle, Port of Darwin							
2002	2003	2004	2005	2006	2007	2008	2009	2002	2003	2004	2005	2006	2007	2008	2009
322,602	260,618	211,042	212,616	229,654	283,046	364,944	347,314	229,796	212,520	205,204	210,558	225,413	247,281	295,539	304,818