



Pastoral Market Update

Live Cattle Exports via Darwin Port – **NOVEMBER 2010**

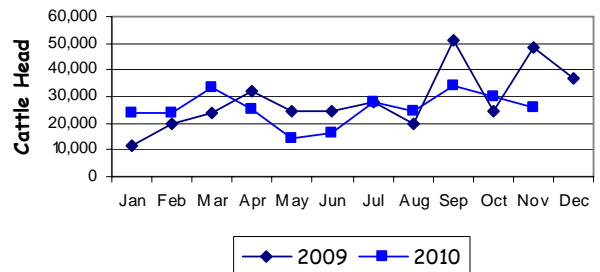
Please note that the "NT CATTLE" figures are NT cattle exported through the Port of Darwin only, some NT cattle are exported through interstate ports.

Destination	TOTAL CATTLE (including interstate)							# NT CATTLE						
	2008	2009	Last year 30/11/09	YTD 30/11/10	1-30 NOV	Previous Month	Difference	2008	2009	Last year 30/11/09	YTD 30/11/10	1-30 NOV	Previous Month	Difference
BRUNEI	4,288	3,131	2,681	2,853	582	513	+69	3,238	2,681	2,681	2,853	582	513	+69
INDONESIA	341,768	330,433	293,488	260,469	23,862	23,407	+455	276,293	288,887	262,061	237,613	23,862	23,407	+455
PHILIPPINES	12,247	10,422	10,422	11,288	0	4,807	-4,807	11,945	10,422	10,422	11,288	0	4,807	-4,807
SABAH	2,985	1,410	910	982	290	0	+290	2,055	910	910	982	290	0	+290
SARAWAK	2,340	0	0	1,615	0	0	0	1,590	0	0	1,615	0	0	0
W-MALAYSIA	1,296	1,918	1,918	2,775	1,500	1,275	+225	418	1,918	1,918	2,775	1,500	1,275	+225
EAST TIMOR	0	0	0	0	0	0	0	0	0	0	0	0	0	0
TOTAL	364,944	347,314	309,419	279,982	26,234	30,002	-3,768	295,539	304,818	277,992	257,126	26,234	30,002	-3,768
				-29,437							-20,866			

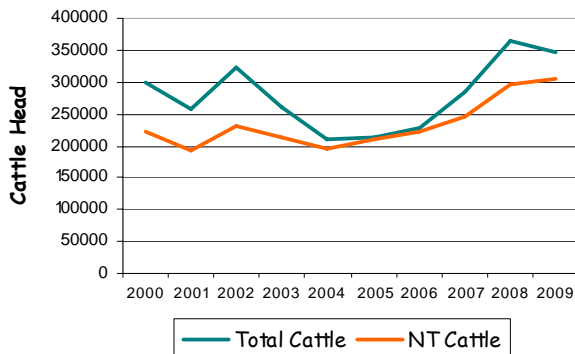
November at a glance

- 26,234 head of cattle through the Port of Darwin during November, 3,768 less than October and 22,128 less than November last year.
- 2010 total cattle figures indicate 29,437 head less than last year. NT cattle 20,866 less than last year.

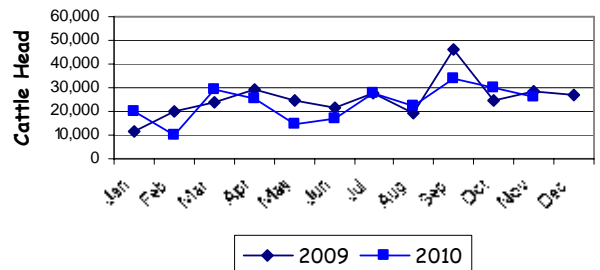
TOTAL Live Cattle Exports thru Port of Darwin 2009 v 2010



Live Cattle Exports thru the Port of Darwin (last 10 years)



NT Live Cattle Exports thru Port of Darwin 2009 v 2010



PREVIOUS 8 YEARS

Total Cattle, Port of Darwin								NT Cattle, Port of Darwin							
2002	2003	2004	2005	2006	2007	2008	2009	2002	2003	2004	2005	2006	2007	2008	2009
322,602	260,618	211,042	212,616	229,654	283,046	364,944	347,314	229,796	212,520	205,204	210,558	225,413	247,281	295,539	304,818




Pastoral Market Update

OTHER LIVESTOCK EXPORTS VIA DARWIN PORT (includes NT and Interstate Stock)

Destination	Buffalo			Camels			Goats			Horses			Sheep			Pigs		
	2009	2010	1-30 NOV	2009	2010	1-30 NOV	2009	2010	1-30 NOV	2009	2010	1-30 NOV	2009	2010	1-30 NOV	2009	2010	1-30 NOV
BRUNEI	327	312	0	0	0	0	397	1605	0	0	0	0	0	0	0	0	0	0
INDONESIA	3,274	2126	0	0	0	0	0	0	0	0	0	0	0	0	0	0	0	0
PHILIPPINES	0	0	0	0	0	0	0	0	0	0	0	0	531	0	0	0	0	0
W-MALAYSIA	0	0	0	0	0	0	0	0	0	0	0	0	0	0	0	0	0	0
SABAH	176	103	27	0	0	0	0	0	0	0	0	0	0	0	0	0	0	0
SARAWAK	0	0	0	0	0	0	0	280	0	0	0	0	0	0	0	0	0	0
TOTAL	3,777	2541	27	0	0	0	397	1885	0	0	0	0	531	0	0	0	0	0

NATIONAL CATTLE PRICES - W/E 26/11/2010

JAPAN OX									MEDIUM STEER										
Estimated dressed weight price (cents/kg)									Estimated dressed weight price (cents/kg)										
SALEYARDS				O.T.HOOKS					SALEYARDS				O.T.HOOKS						
NSW	QLD	SA	AV (Aust)	NSW	QLD	SA	AV (Aust)	NSW	QLD	SA	AV (Aust)	NSW	QLD	SA	AV (Aust)	NSW	QLD	SA	AV (Aust)
This week	331	329	320	329	315	321	Nq	319	This week	334	342	332	339	310	309	Nq	314		
Last week	328	329	325	327	315	321	Nq	317	Last week	334	324	336	328	310	309	Nq	314		
Year ago	276	295	264	282	283	289	nq	277	Year ago	279	303	269	282	270	285	Nq	283		
MEDIUM COW									TRADE STEER										
Estimated dressed weight price (cents/kg)									Estimated dressed weight price (cents/kg)										
SALEYARDS				O.T.HOOKS					SALEYARDS				O.T.HOOKS						
NSW	QLD	SA	AV (Aust)	NSW	QLD	SA	AV (Aust)	NSW	QLD	SA	AV (Aust)	NSW	QLD	SA	AV (Aust)	NSW	QLD	SA	AV (Aust)
This week	295	280	263	288	274	291	270	278	This week	375	381	339	366	319	309	310	315		
Last week	294	285	272	290	274	291	263	276	Last week	372	378	336	367	319	309	305	304		
Year ago	240	247	245	241	239	245	225	236	Year ago	292	293	273	293	285	283	nq	303		
LIVE EXPORT QUOTES									<p>Prices courtesy of Meat & Livestock Australia</p>  <p>www.mla.com.au</p>										
Estimated <u>live</u> weight price (cents/kg)																			
LIGHT STEERS (280-400 kg)				HEAVY STEERS (400+ kg)															
Darwin		Fremantle		Darwin		Fremantle													
This week	nq	nq	nq	nq	nq	nq	nq	nq											
Last week	nq	nq	nq	nq	nq	nq	nq	nq											
Year ago	185	nq	185	nq	nq	nq	nq	nq											

CURRENCY EXCHANGE RATES

Key Currencies 1AUD =	Current 1.12.2010	Previous month 1.11.2010	3 months ago 1.9.2010	1 Year ago 1.12.2009	Pre-devaluation 01.07.1997
Brunei Dollar	1.29046	1.30096	1.22403	1.25071	1.076
Indonesian Rupiah	8,786.47	8,806.67	8,028.49	8,563.67	1830
Philippine Peso	42.50028	42.58700	40.48799	42.9432	19.84
Malaysian Ringgit	3.04598	3.07940	2.80637	3.09301	1.9
Euro	0.73583	0.71335	0.70196	0.60863	N/A
US Dollar	0.96124	0.99614	0.89008	0.91463	0.752

PREVIOUS 8 YEARS

Total Cattle, Port of Darwin								NT Cattle, Port of Darwin							
2002	2003	2004	2005	2006	2007	2008	2009	2002	2003	2004	2005	2006	2007	2008	2009
322,602	260,618	211,042	212,616	229,654	283,046	364,944	347,314	229,796	212,520	205,204	210,558	225,413	247,281	295,539	304,818