



Pastoral Market Update

Live Cattle Exports via Darwin Port – **SEPTEMBER 2009**

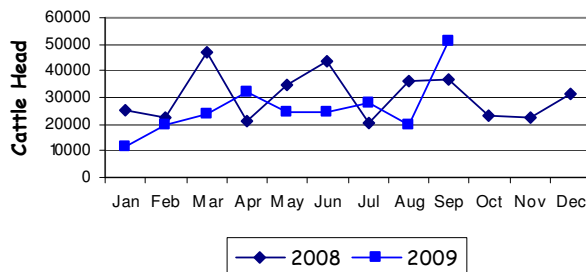
Please note that the "NT CATTLE" figures are NT cattle exported through the Port of Darwin only, some NT cattle are exported through interstate ports.

Destination	TOTAL CATTLE (including interstate)							# NT CATTLE						
	2007	2008	Last year 30/09/08	YTD 30/09/09	1-30 SEP	Previous Month	Difference	2007	2008	Last year 30/09/08	YTD 30/09/09	1-30 SEP	Previous Month	Difference
BRUNEI	4,916	4,288	3,639	1,891	0	900	-900	4,160	3,238	2,589	1,891	0	900	-900
INDONESIA	258,736	341,768	273,597	222,984	49,307	19,476	+29,831	225,177	276,293	218,297	211,107	44,302	18,881	+25,421
PHILIPPINES	12,041	12,247	6,317	8,635	0	0	0	10,321	11,945	6,317	8,635	0	0	0
SABAH	1,397	2,985	2,055	910	0	0	0	1,397	2,055	2,055	910	0	0	0
SARAWAK	2,143	2,340	1,590	0	0	0	0	2,143	1,590	1,590	0	0	0	0
W-MALAYSIA	3,813	1,296	514	1,918	1,918	0	+1,918	3,813	418	418	1,918	1,918	0	+1,918
EAST TIMOR	0	0	0	0	0	0	0	0	0	0	0	0	0	0
TOTAL	283,046	364,944	287,732	236,338	51,225	20,376	+30,849	247,281	295,539	231,266	224,461	46,220	19,781	+26,439
				-51,394							-6,805			

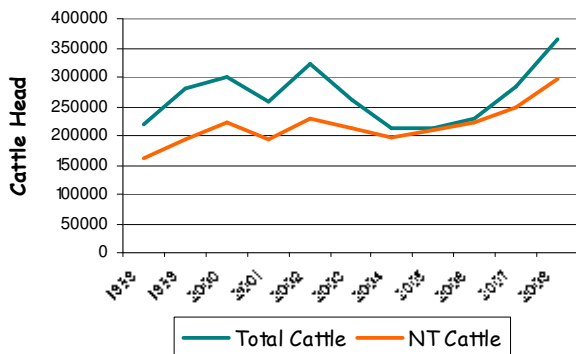
September at a glance

- 51,225 head of cattle through the Port of Darwin during September, 30,849 head more than August and 14,500 more than September last year.
- 2009 total cattle figures indicate 51,394 head less than the same time last year. NT cattle 6,805 less than last year.

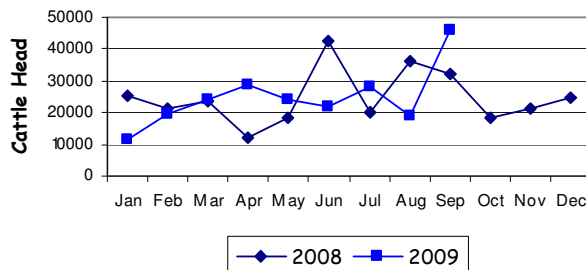
TOTAL Live Cattle Exports thru Port of Darwin 2008 v 2009



Live Cattle Exports thru the Port of Darwin (last 10 years)



NT Live Cattle Exports thru Port of Darwin 2008 v 2009




PREVIOUS 8 YEARS

Total Cattle, Port of Darwin								NT Cattle, Port of Darwin							
2001	2002	2003	2004	2005	2006	2007	2008	2001	2002	2003	2004	2005	2006	2007	2008
258,127	322,602	260,618	211,042	212,616	229,654	283,046	364,944	193,172	229,796	212,520	205,204	210,558	225,413	247,281	295,539

OTHER LIVESTOCK EXPORTS VIA DARWIN PORT (includes NT and Interstate Stock)

Destination	Buffalo			Camels			Goats			Horses			Sheep			Pigs		
	2008	2009	1-30 SEP	2008	2009	1-30 SEP	2008	2009	1-30 SEP	2008	2009	1-30 SEP	2008	2009	1-30 SEP	2008	2009	1-30 SEP
BRUNEI	306	0	0	0	0	0	484	0	0	1	0	0	0	0	0	0	0	0
INDONESIA	3,815	2,520	583	0	0	0	0	0	0	0	0	0	0	0	0	0	0	0
PHILIPPINES	0	0	0	0	0	0	0	0	0	0	0	0	0	531	0	0	0	0
W-MALAYSIA	280	0	0	0	0	0	0	0	0	0	0	0	3,036	0	0	0	0	0
SABAH	236	176	0	0	0	0	0	0	0	0	0	0	0	0	0	0	0	0
SARAWAK	0	0	0	0	0	0	1,333	0	0	0	0	0	0	0	0	0	0	0
TOTAL	4,637	2,696	583	0	0	0	1,817	0	0	1	0	0	3,036	531	0	0	0	0

NATIONAL CATTLE PRICES - W/E 2/10/09

JAPAN OX									MEDIUM STEER								
Estimated dressed weight price (cents/kg)									Estimated dressed weight price (cents/kg)								
SALEYARDS				O.T.HOOKS					SALEYARDS				O.T.HOOKS				
NSW	QLD	SA	AV (Aust)	NSW	QLD	SA	AV (Aust)	NSW	QLD	SA	AV (Aust)	NSW	QLD	SA	AV (Aust)		
This week	294	290	303	295	301	281	Nq	294	This week	296	296	308	301	281	276	Nq	292
Last week	304	309	303	307	301	293	Nq	295	Last week	308	315	312	311	281	288	Nq	294
Year ago	359	361	339	359	348	341	nq	329	Year ago	349	361	358	354	345	346	Nq	328
US COW									TRADE STEER								
Estimated dressed weight price (cents/kg)									Estimated dressed weight price (cents/kg)								
SALEYARDS				O.T.HOOKS					SALEYARDS				O.T.HOOKS				
NSW	QLD	SA	AV (Aust)	NSW	QLD	SA	AV (Aust)	NSW	QLD	SA	AV (Aust)	NSW	QLD	SA	AV (Aust)		
This week	251	249	247	248	234	221	230	238	This week	328	316	307	326	297	281	nq	323
Last week	253	255	256	251	236	226	240	242	Last week	322	337	307	322	297	290	nq	324
Year ago	320	298	309	305	290	271	305	287	Year ago	364	360	345	359	341	332	nq	340
LIVE EXPORT QUOTES									<p>Prices courtesy of Meat & Livestock Australia</p>  <p>www.mla.com.au</p>								
Estimated live weight price (cents/kg)																	
LIGHT STEERS (280-400 kg)				HEAVY STEERS (400+ kg)													
Darwin		Fremantle		Darwin		Fremantle											
This week	175		nq	170		nq											
Last week	175		nq	170		nq											
Year ago	185		nq	180		nq											

CURRENCY EXCHANGE RATES

Key Currencies 1AUD =	Current 6.10.2009	Previous month 1.9.2009	3 months ago 1.7.2009	1 Year ago 1.10.2008	Pre-devaluation 01.07.1997
Brunei Dollar	1.24824	1.22556	1.17019	1.15892	1.076
Indonesian Rupiah	8,402.02	8,457.89	8,158.13	7,626.50	1830
Philippine Peso	40.91117	41.82789	38.82743	37.80511	19.84
Malaysian Ringgit	3.02666	3.01836	2.81025	2.75729	1.9
Euro	0.59742	0.58853	0.56861	0.55970	N/A
US Dollar	0.87381	0.84156	0.79297	0.80002	0.752

Prepared by the NT Department of Regional Development, Primary Industry, Fisheries and Resources

This publication contains commodity market information prepared for DRDP/IFR staff use in strategic research and extension planning. While DRDP/IFR exercise care in the compilation and preparation of this information, no responsibility is taken for its accuracy or for the completeness of any information that is reproduced from other sources. DRDP/IFR denies any loss or damage to any person whether caused directly or indirectly by the use of any of the information provided.